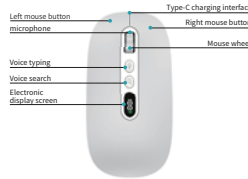


M191 Smart Voice Mouse

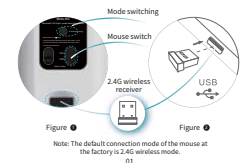


Instructions for use and after-sales service guarantee

1 Product Structure and Button Instructions



2 Use the mouse

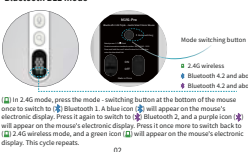


Note: The default connection mode of the mouse at the factory is 2.4G wireless mode.

- (1) As shown in Figure 1, take out the 2.4G wireless receiver of the mouse.
- (2) As shown in Figure 2, insert the 2.4G wireless receiver into any USB port of the computer.
- (3) Wait for a while. After the computer recognizes the mouse device, turn on the power switch of the mouse, and the mouse function can be used normally. If the mouse does not respond after the above operations, please try to connect the 2.4G wireless receiver to another USB port on the computer.
- (4) If it still cannot be used normally, please pair it in the following way:
Switch the mouse mode to 2.4G mode. The green icon (A) on the mouse's electronic display will flash slowly. Then insert the mouse receiver into the computer's USB port. Press and hold the mode button at the bottom of the mouse for 3-5 seconds. Wait until the green icon (A) flashes quickly. The mouse will enter the pairing mode. Place the mouse close to the receiver. If the connection is successful, the green icon (A) will remain on steadily, and the mouse can be used normally. If it fails, repeat the above operations.
- (5) A dedicated smart voice mouse software needs to be installed for the mouse's voice function. Please refer to "6. Software Installation Method" on Page 4 for the software download and installation instructions.

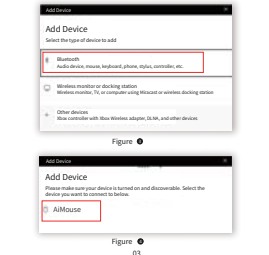
To use the 2.4G high-performance wireless mode, it is necessary to use it in conjunction with the wireless receiver of the bottom of the mouse. To use the Bluetooth mode, the computer must have Bluetooth hardware and support the Bluetooth 8.0 function. (The operating systems supported include Windows 7, 8, 10, 11 and above, or MacOS 10.12 and above.)

Bluetooth BLE mode

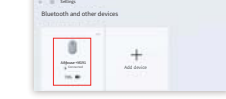


(1) In 2.4G mode, press the mode-switching button at the bottom of the mouse once to switch to Bluetooth 1. A blue icon (B) will appear on the mouse's electronic display. Press it again to switch to Bluetooth 2, and a purple icon (C) will appear on the mouse's electronic display. Press it once more to switch back to 2.4G wireless mode, and a green icon (A) will appear on the mouse's electronic display. This cycle repeats.

- (2) Enter the Bluetooth pairing mode
Switch the mouse mode to Bluetooth mode. A blue/purple (B/C) icon will appear on the mouse's electronic display. Press and hold the mode button at the bottom of the mouse for 3-5 seconds. Wait until the blue/purple (B/C) icon flashes rapidly, then the mouse enters the Bluetooth pairing mode. In the Bluetooth pairing mode, the blue/purple (B/C) icon on the mouse's electronic display will flash continuously for 60 seconds. The pairing operation needs to be completed within 60 seconds, after a successful pairing, the blue/purple (B/C) icon on the electronic display will remain steadily lit.
- (3) Pair and connect with the computer
Open the device option in the computer settings interface. As shown in the figure, click "Add Bluetooth or other device" in the pop-up dialog box, as shown in the figure, select "Bluetooth". As shown in the figure, find "M191mouse" and click to pair and connect. After successfully pairing with the computer, the blue indicator light will remain on for 5 seconds and then go out.



Software installation instructions



Windows operating system

1. How to obtain the software installation package
When a Windows user holds down the mouse scroll wheel for 5 seconds while the mouse is functioning normally, the driver download page will automatically pop up. Alternatively, users can enter "www.miclink.net/gzg" in their browser to open the driver download page. Click on the Windows Driver Download button to download the software.



- (1) Double-click the downloaded installation package and click "Next" to start the installation.
- (2) After the installation is complete, the software will run automatically, and the software icon (M) will appear in the taskbar at the bottom-right corner of the computer.

Precautions:
Since the driver is set to open automatically at startup by default during installation, if the antivirus software pops up a warning to block the startup, just select "allow this operation".



(It may also appear in the hidden taskbar.)

Mac OS operating system

1. How to Obtain the Software Installation Package
MacOS users can directly download and install MicLink Pro by searching for it in the App Store. After installation, open the software, and the software icon (M) will appear in the top status bar of the computer.

Charging instructions

It is recommended to charge the mouse using a computer's USB interface or a 5V power supply. During charging, the red light near the scroll wheel will stay on, and when it is fully charged, the red light will turn off. It takes approximately 2 hours to fully charge the mouse. (Do not use a quick charger adapter and quick charging cable to charge the mouse.)

Function Introduction

1. Voice Typing

- (1) Phrase Voice Mode: Hold down the mouse "Q" key (as shown in the picture 1) to start speaking, release it when finished to achieve voice typing.
- (2) Long voice mode: Click the mouse "Q" key (as shown in the picture 2) to start speaking, click the key again after finishing speaking to achieve voice typing.

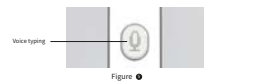


Figure 1

2. Voice Search

- (1) Press and hold the "Q" key of the mouse (as shown in the picture 1), start speaking, and release it after finishing to achieve intelligent search.
- (2) The language used for voice search is the same as that for voice typing.
- (3) Left-click on the MicLink (M) icon in the pop-up software interface, click "Intelligent Settings", and you can set the search engine in "Voice Search Settings".

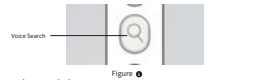


Figure 2

3. Voice Translation

- (1) Left-click on the MicLink (M) icon, then in the popped-up software interface, click on "Device Settings" and select the "Voice Translation" function (as shown in the picture 1).
- (2) When Voice Mode: Hold down the mouse translation key to start speaking, release it when finished to achieve voice translation.

Figure 3

- (3) Long Voice Mode: Click the mouse translate button to start speaking, click the button again after finishing speaking to achieve voice translation.



Figure 4

- (4) To select the language for translation, left-click on the MicLink (M) icon in the software interface that appears, click on "Smart Settings" to enter the translation settings (as shown in the picture 1).

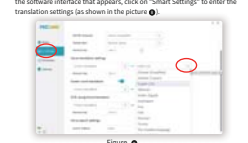


Figure 5

4. Word translation

- (1) Left-click on the MicLink (M) icon, click on "Smart Settings" in the pop-up software interface, find the button for translating words (as shown in the picture 1), click the button, slide the mouse to select the text to be translated, and click the translation button.

Figure 6

- (2) In the software, it is possible to set the recognition and translation language for stroke translation (as shown in the figure 1).

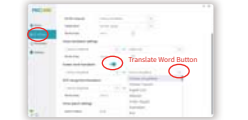


Figure 7

5. Screenshot recognition/translation

- (1) Left-click on the MicLink (M) icon, click on "Device Settings" in the pop-up software interface, and select the "Screenshot Translation" function (as shown in the picture 1).



Figure 8

- (2) Click the "Q" button, slide the mouse to select recognition or translation content, and click the software recognition or translation button.
- (3) In the software, it is possible to set the recognition and translation language for screenshot translation, as well as modify the shortcut keys for screenshot translation (as shown in the figure 1).

Figure 9

- (1) Left-click on the MicLink (M) icon, click on "Cloud Command Settings" in the pop-up software interface, and then click on "Add Command" (as shown in the figure 1). Enter the command word and select the corresponding control function (open folder/file/website/fixd task) (as shown in the figure 1).

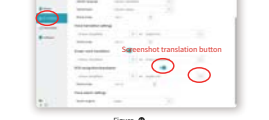


Figure 10

6. Cloud command settings

- (1) Left-click on the MicLink (M) icon, click on "Cloud Command Settings" in the pop-up software interface, and then click on "Add Command" (as shown in the figure 1). Enter the command word and select the corresponding control function (open folder/file/website/fixd task) (as shown in the figure 1).



Figure 11

Precautions for use

1. Due to its ultra-low standby power consumption, there is no need to deliberately turn off the mouse when used in a fixed location. It is recommended to keep the mouse turned off when carrying it out.
2. After inserting the 2.4G wireless receiver into the computer USB, there is no need to remove it unless it needs to be replaced. Cannot use 3.0/AA/AAA batteries.
3. The battery is a 3.7V 500mAh rechargeable battery, which does not need to be removed unless it needs to be replaced. Cannot use 3.0/AA/AAA batteries.

Special Reminder

1. Intelligent voice mouse equipped with rechargeable batteries should avoid exposure to sunlight or storage in hot cars. Do not disassemble the mouse's casing or parts at will.
2. The external surface of rechargeable batteries may cause accidental explosions or fires under certain pressure or local forces. If you need to carry them out, it is best to keep the mouse product in the closed state.
3. The temperature of the mouse in contact with the environment should not exceed 60 degrees Celsius, otherwise the rechargeable battery will accelerate aging.
4. The optimal temperature range for charging the intelligent voice mouse is 0-45 degrees Celsius.

Service Guarantee Certificate

We strive to ensure rigorous product design and perfect product quality, committed to high-performance and personalized user experience, and provide comprehensive after-sales service.

Safeguard clause

From the date of sale, the intelligent voice mouse can enjoy 12 months of free warranty service in case of hardware failure under normal use.

The following factors are not covered by the free warranty service. We will provide paid after-sales service, which includes fault repair, component or complete machine replacement.

1. Disassembly, maintenance, and assembly by unauthorized personnel;
2. Physical damage or destruction caused by use;
3. Abnormalities caused by normal wear and tear and other reasons unrelated to product quality.

.....

Precautions for use

1. Due to its ultra-low standby power consumption, there is no need to deliberately turn off the mouse when used in a fixed location. It is recommended to keep the mouse turned off when carrying it out.
2. After inserting the 2.4G wireless receiver into the computer USB, there is no need to remove it unless it needs to be replaced. Cannot use 3.0/AA/AAA batteries.
3. The battery is a 3.7V 500mAh rechargeable battery, which does not need to be removed unless it needs to be replaced. Cannot use 3.0/AA/AAA batteries.

Special Reminder

1. Intelligent voice mouse equipped with rechargeable batteries should avoid exposure to sunlight or storage in hot cars. Do not disassemble the mouse's casing or parts at will.
2. The external surface of rechargeable batteries may cause accidental explosions or fires under certain pressure or local forces. If you need to carry them out, it is best to keep the mouse product in the closed state.
3. The temperature of the mouse in contact with the environment should not exceed 60 degrees Celsius, otherwise the rechargeable battery will accelerate aging.
4. The optimal temperature range for charging the intelligent voice mouse is 0-45 degrees Celsius.

.....

.....

.....

.....

.....

.....

.....

.....

.....

.....

.....

.....

.....

.....

.....

.....

.....

.....

.....

.....

This equipment has been tested and found to comply with the limits for a Class B digital device, pursuant to part 15 of the FCC Rules. These limits are designed to provide reasonable protection against harmful interference in a residential installation. This equipment generates, uses and can radiate radio frequency energy and, if not installed and used in accordance with the instructions, may cause harmful interference to radio communications. However, there is no guarantee that interference will not occur in a particular installation. If this equipment does cause harmful interference to radio or television reception, which can be determined by turning the equipment off and on, the user is encouraged to try to correct the interference by one or more of the following measures:

- Reorient or relocate the receiving antenna.
- Increase the separation between the equipment and receiver.
- Connect the equipment into an outlet on a circuit different from that to which the receiver is connected.
- Consult the dealer or an experienced radio/TV technician for help.

Caution: Any changes or modifications to this device not explicitly approved by manufacturer could void your authority to operate this equipment.

This device complies with part 15 of the FCC Rules. Operation is subject to the following two conditions: (1) This device may not cause harmful interference, and (2) this device must accept any interference received, including interference that may cause undesired operation.

The device has been evaluated to meet general RF exposure requirement.