

单色印刷 折页 157g铜板纸，尺寸：宽80高110mm

Precautions

Precautions

1. Please read the instructions carefully and do not use this product for a long time to prevent muscle pain caused by excessive massage.
2. Do not wear a necklace when using it.
3. Do not use it while lying flat or half-lying, and do not use it on your legs.
4. Please use it according to your own experience of the required strength and massage duration to avoid damage caused by excessive strength or too long time.
5. The temperature is overheated and the automatic stop protection is activated.
6. Patients with abnormal heart and cervical nerves.
7. Patients with severe cervical spondylosis.
8. Patients with abnormal or curved cervical vertebrae due to accidents or diseases.
9. The device has a heating surface, and people who are not sensitive to heat must be careful when using it.
10. Patients who cannot express their wishes.
11. Do not use it for purposes other than massage described in the instructions for use, otherwise accidents and malfunctions may occur.
12. Do not disassemble, repair or modify this product without authorization, otherwise it may cause malfunctions or electric shock accidents.

Product Protection

1. Please use the charging cable and standard adapter provided with the product to charge the product.
2. Please keep this product away from water, fire and corrosive environments.
3. The product will automatically shut down after 10 minutes of operation. This product should be stored in a ventilated and dry place after use.

Product Cleaning

If you need to clean the appearance, you can wipe the surface of the product with a cloth dipped in a small amount of water or 75% alcohol. Do not rinse the product directly with water.

Suggestion

1. Please make sure that the buttons of this machine are working properly before using it.
2. When using it for the first time, or the battery power is depleted after the product has been left for a long time, please charge it according to the instruction manual to ensure that it can work properly.
3. When disposing of this product, please handle it in accordance with the relevant environmental protection regulations of the city, otherwise it may cause environmental pollution.

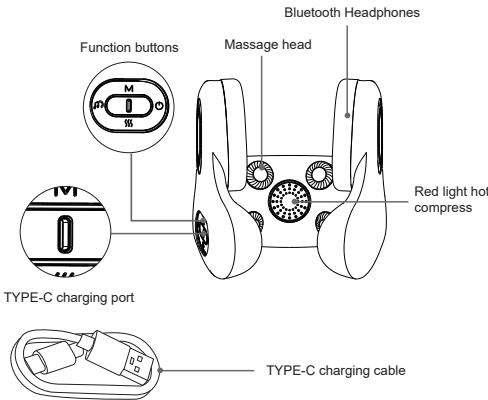
-1-

Product Introduction

Product Information

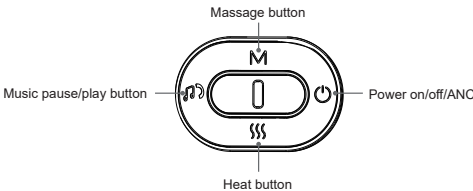
| | |
|------------------|----------------|
| Charging voltage | 5V \equiv 1A |
| Power | 5W |
| Battery capacity | 1500mAh |
| Product model | ST-370A |

Product Introduction



-2-

Product Introduction



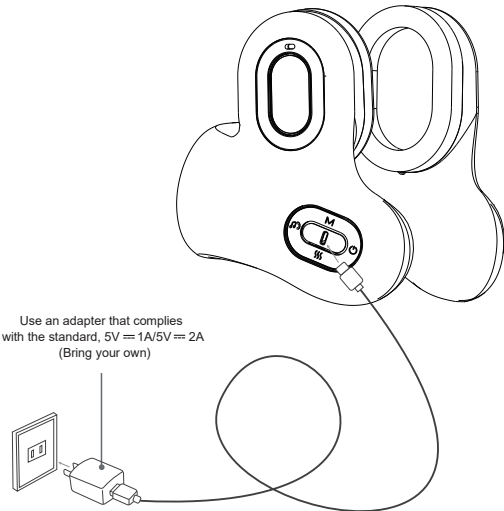
By default, vibration massage is turned on, low-level heating is turned on, and noise reduction is turned off. When the vibration massage is turned on, the background sound of the massage is played

1. Power button:
Long press "⏻" to turn on/off.
Short press "⏻" to turn on/off noise reduction.
2. Massage button:
Short press "M" to switch between active mode/relax mode/massage off/soothing mode - cycle.
Press and hold "M" to turn off massage.
3. Hot compress button:
Short press "🔥" to switch between medium level heating/high level heating/heating off /low level heating - cycle.
4. Pause/play button:
Short press "⏸️":
When Bluetooth is connected: Pause/play music (short press to answer the call when there is an incoming call, short press to hang up the call when there is a call)
Bluetooth is not connected: Pause/play background music.
Long press "⏸️": Switch to the next music.
5. Indicator lights
Full power: Green light is always on, Low power: Red light is always on, Low power: Red light flashes 5 times and then turns off.
Charging: Red light flashes, Green light is always on when fully charged.
Bluetooth: After turning on the device, if Bluetooth is not connected, the blue light flashes, and the blue light turns off after connecting to Bluetooth.

-3-

Charging the product

Full power: green light is on.
Low power: red light is on.
Lack of power: red light flashes 5 times and then turns off.
Charging: red light flashes, green light is on when fully charged.



-4-

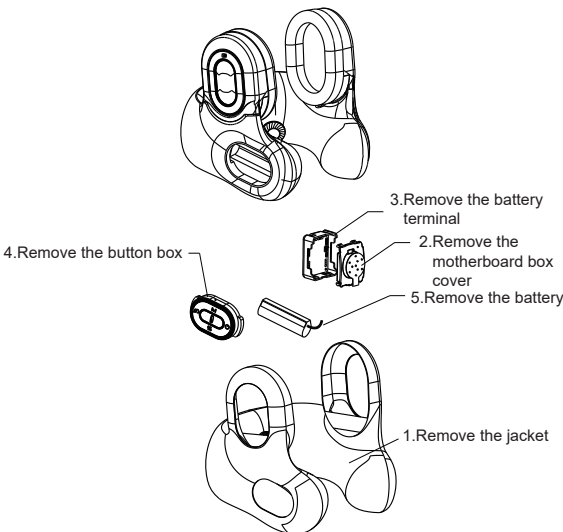
FCC Statement

- 1.This device complies with Part 15 of the FCC Rules. Operation is subject to the following two conditions:
(1)This device may not cause harmful interference.
(2)This device must accept any interference received, including interference that may cause undesired operation.
- 2.Changes or modifications not expressly approved by the party responsible for compliance could void the user's authority to operate the equipment. Note: This equipment has been tested and found to comply with the limits for a class B digital device,pursuant to Part 15 of the FCC Rules. These limits are designed to provide reasonable protection against harmful interference in a residential installation.
This equipment generates uses and can radiate radio frequency energy and, if not installed and used in accordance with the instructions,may cause harmful interference to radio communications.However,there is no guarantee that interference will not occur in a particular installation.if this equipmemt does cause harmful interference to radio or television reception,which can be determined by turning the equipment off and on,the user is encouraged to try to correct the interference by one or more of the following measures:
 - Reorient or relocate the receiving antenna.
 - Increase the separation between the equipment and receiver.
 - Connect the equipment into an outlet on a circuit different from that to which the receiver is connecte
 - Consult the dealer or an experienced radio/TV technician for help.

The device has been evaluated to meet general RF exposure requirement. The device can be used in portable exposure condition without restriction.



Battery Disassembly





- The main unit (including lithium battery) and accessories of this product have reached the end of their service life. Please do not discard them at will. Otherwise, electronic waste will pollute the environment. Before discarding the product, the battery must be removed from the product; before removing the battery, the product must be powered off; the battery should be disposed of safely when removed.

-5-

Troubleshooting

Troubleshooting

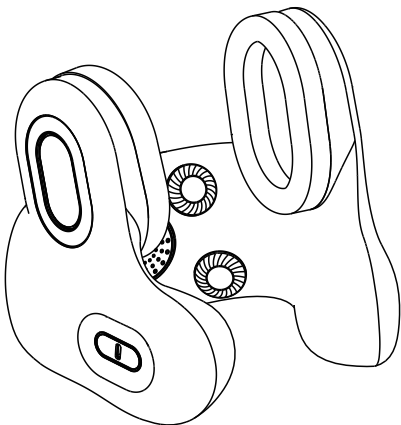
If you encounter problems when using the product, please refer to the following tips and solutions.
If the product is still in a faulty state or cannot be used, please turn off the power. Users should not disassemble or repair the product by themselves. Disassembly or repair by yourself that causes damage to the product will invalidate the product warranty and the company will not be responsible for any consequences caused by this situation.

| situation | Possible causes/solutions |
|---|---|
| Unable to activate massager | Please check if the battery is low; Please check if the massage switch button is pressed; |
| Cannot charge or no charging light is displayed | Please check whether the TYPE-C charging cable is properly connected to the charging port of this machine; |
| The massager suddenly stops while working | Is the product low on power? The 10-minute time set by the automatic timer has passed; If the problem persists, do not continue to use it and contact the company's repair service center; |
|  Danger | The battery used in this product is a special rechargeable battery and cannot be used in other products. Do not charge the rechargeable battery that has been removed; Do not throw it into fire to cause excessive heat; Do not pierce it with nails, impact it with gravity, or disassemble it for modification; Do not directly connect the positive and negative poles of the battery with metal; Do not store it with necklaces, hairpins, etc. Do not charge, use or place it in high temperature places such as near a stove or under the scorching sun. The above situations may cause heating, fire, rupture, etc; |
|  warning | Please place the removed rechargeable battery out of reach of infants and young children to prevent accidental swallowing; if accidental swallowing occurs, please seek medical attention immediately; When the battery fluid leaks, do not touch the liquid with bare hands, and handle it as follows: When the battery fluid enters the eyes, there is a risk of blindness. Do not rub your eyes directly with your hands. Wash them with clean water immediately and seek medical attention; When the battery fluid gets on the body or clothing, it may cause skin inflammation or injury. Please rinse with clean water. If you still feel uncomfortable, seek medical attention immediately; The product can only be disassembled when it is discarded. Failure to comply may cause fire, electric shock, injury and other accidents; |

-6-

SLEEPING U-SHAPED NECK PILLOW

User Manual



Please read this manual carefully before using this product and keep it properly. The product appearance shall be subject to the actual product.