

3D Photo Frame  
Instructions  
USER' S INSTRUCTION

“

**Open the door to the 3D universe**

**Experience the new window  
of naked-eye vision**

”

Thank you for choosing our 3D Photo Frame.  
Through its holographic 3D display, you will  
experience an immersive visual feast.

## **Contents**

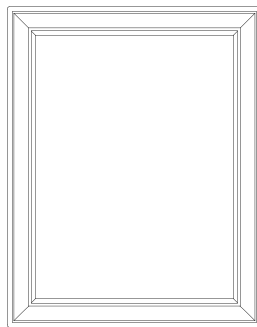
- 01** Safety Instructions
- 02** Product Information
- 03** Usage Instructions
- 04** Troubleshooting and Resolution
- 05** Notes
- 06** Friendly Trips

## 01 / Safety Instructions

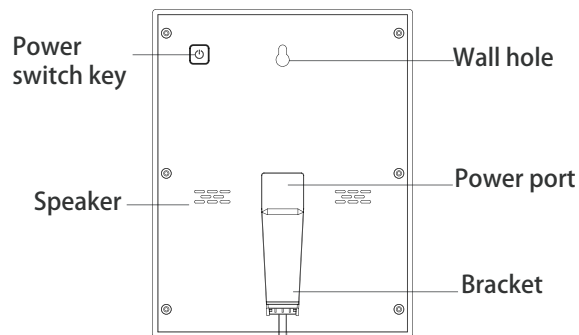
1. Before using this device, please read the instructions carefully and keep them for reference
2. The illustrations in this manual may differ from the actual product, so please refer to the actual product
3. Please strictly follow the warnings and instructions in this manual
4. The appearance and specifications of this product may be changed without prior notice

## 02 / Product Information

Recognize the product



**3D Photo Frame  
front side**



**3D Photo Frame  
back side**

Product Name	7.9" 3D Photo Frame
Product Model	JT079H-A03W
Base screen	7.9 inch LCD
Resolution ratio	1536*2048
Product Dimensions	192.7*152.8*46.1 (mm)
Operating environment	indoor
Best viewing distance	Above 0.5m
Display area	159.7(H)*119.8(W)mm
Screen luminance	250cd/m <sup>2</sup>
Contrast	1000:1
Response Time	35ms
Package Dimension	213.5*213.5*59(mm)
System	Android 11 RK3566
Force touch	Yes
Battery capacity	4000mAh
Input power	100V~240V AC 50/60Hz 5V 2.4A

Input interface	Type-C
Vsion Number	49
Raster format	Hololens
playback software	Holo OS
Content formats	Multi-tile
Plugin support	/

## Product configuration

01	7.9" 3D Photo Frame x1
02	charging head x1
03	adapter cable x1
04	User's instruction x1

## 03 / Usage Instructions

### Turn on

Connect the power cable to the power port and Press and hold the power button until the device starts, and then wait a few seconds for the device to enter the operation interface

### Network binding and unbinding

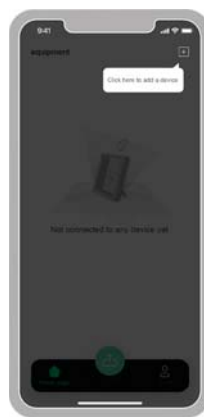
Preparations: Before networking, keep the device fully charged. Click Settings, select network and enter the password to connect to the network

1) Binding: Download the "Immers" APP on your phone, register and log in as prompted, click the upper right corner to add the device, scan the device ID QR code on the setting interface of the photo frame, and the binding is completed when the connection is successful.

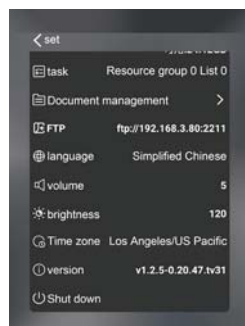


Scan QR code to download Immers APP





### 3D Photo Frame



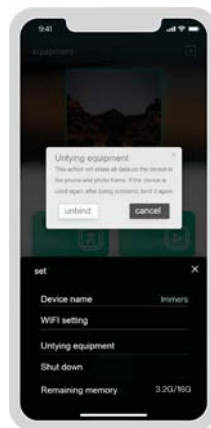
Device setup  
interface



Scan the QR code  
to bind your account

2) Unbind: Enter the photo frame setting interface on the phone terminal and click"

Unbind the device "to complete the unbind the device



### **Immers Unbind the photo frame**

This device supportstwo ways of transferring picturesand videos

1.Via USB flash drive:Connect the USB flashdrive to the devicethrough the Type-Cadapter,manually copythe content to the localfolder of the photoframe (the devicetemporarily supportsJPG,PNG and MP4video formats

2) Mobile terminal transmission: enter Immers APP on mobile terminal,  
 Select the corresponding photo frame, click the Upload button, and select Photo  
 Photo or local upload, APP will automatically upload to the server will  
 2D images are converted to 49views3D images and then automatically  
 Download to the photo frame to play. (ImmersAPP Sets playback  
 All uploaded files can be viewed on the list page.



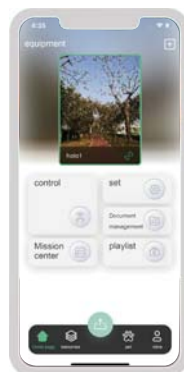
**Take photos or upload content locally**



**Playlist browse upload file**

1) Select the video or picture file on the photo frame and click Play.

2.Via mobile phone:Enter the Immers APPfrom the mobile terminal, select thecorresponding photoframe,click the Upload button, and select Photo Photo or local upload, APP will automatically upload to the server will 2D images are converted to 49views3D images and then automatically Download to the photo frame to play. (ImmersAPP Sets playback All uploaded files can be viewed on the list page.



**Take photos or upload content locally**



**Playlist browse upload file**

Content playback  
1)Selec the video or picture file on the photo frame and click Play.

2) Enter the Immers APP with your mobile phone, select the corresponding picture frame, and click “Control” to control the playback, pause, volume, previous song and next song of the photo frame.



**Immers controls the frame**

### **power off**

- 1) Long press the Shutdown button to shut down the device
- 2) Enter the setting interface of Immers APP and click “Yes”



**ImmersClose the hologram frame**

## **04/ Fault analysis and troubleshooting**

### **Fault analysis and troubleshooting**

- 1) The display screen is not bright: please check the battery allowance of the picture frame; Check the power interface to ensure that the display is plugged in, and ensure that the power supply is normal.
- 2) The screen blinks: please restart the device. If the fault cannot be removed, please contact our technical personnel
- 3) No sound: Go to Settings → Sound to set the volume.

## 05 / Notes

### operation and maintenance

#### 1)Note:

The display surface is made of glass. Do not use mechanical impact, such as impact or fall from height.

Do not put too much pressure on the surface of the display

or the connecting area of the LCD module.

so as not to cause tint change;

If the surface of the display is stained. wipe it with a soft dry cloth. If you need to use a solvent. use alcohol only.

#### 2)Environment:

Maintain a dry working environment and avoid contact

with chemicals; Do not expose the product to rain, humidity or direct sun environment. so as not to affect its normal use;

Temperature range.

Storage temperature:20Cto 60C.Operatingtem

perature: 0'C to 50Cwhen the relativehumidity

《=65.do not block the ventilationholes. Do not

place the displaynear a radiator,heat source.

orother devices that may affectproper ventilation.

### 3)Waste recycling tips:

In order to better care for and protect the environment, when users no longer need the product or the product life is terminated, please comply with the national laws and regulations on recycling of electrical and electronic products, and give it to local manufacturers with nationally recognized recycling qualifications for recycling.

4) The following problems may occur in the picture frame display is a normal phenomenon, not a quality problem of the display screen:

a. Due to the characteristics of LCD display, the picture may flicker when first used. Please close the display screen and then open it again to ensure that the screen no longer flickers;

b. The effective pixel of LCD display reaches or exceeds 99.99%, but there will be 0.01% or less pixel loss or brightness loss during display.

c. When you use different desktop graphics, the image brightness may be slightly uneven;

d. Due to the characteristics of LCD display, pixel residue will not occur in its normal operation. However, when the same static image is displayed for a long time before switching images, the previous residual image may remain, known as "residual image". The best way to avoid it is to run a screen saver for monochrome or motion images when you're not using the system.



## 06 / Friendly Trips

### **For TYPE-C cable, normal insertion and removal procedures,,**

Step 1: Place the device back up horizontally on the desktop,

In the second step, put the TYPE-C data cable into the cable slot of the device as shown in the figure, align the interface with the TYPE-C charging port, and push the data cable interface into the charging port with your thumb.

The third step, as shown in the figure, just pull the data cable gently from the bottom of the device to disconnect the power supply (do not break the TYPE-C plug from the position, which is easy to damage the TYPE-C head).

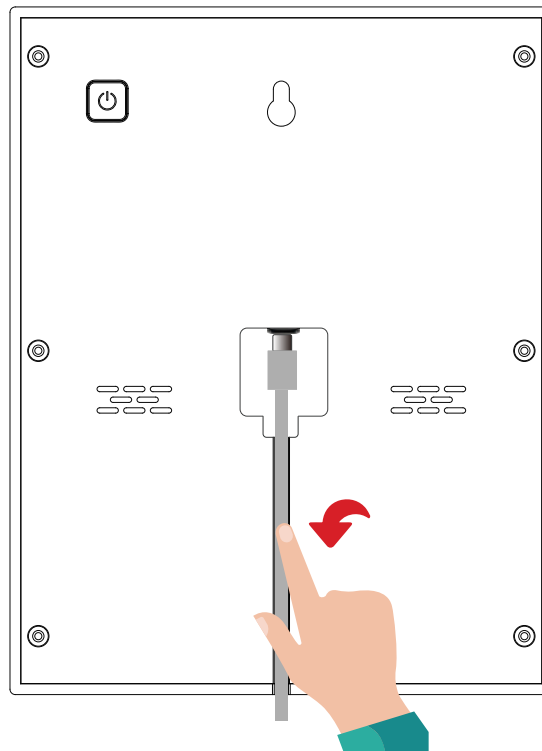
Charging precautions: When the photo frame is completely out of power, the device will be in a low power protection state, in order to ensure that the screen can display images normally, after the device is connected to the power supply, please wait for the screen to display more than 10% of the power, and then start to use.

Shutdown note: When the device is shut down, press and hold the power button. When the "Shutdown" option appears on the screen, click "Shutdown".

Do not hold down the power button to forcibly shut down the device. This operation may cause an exception on the screen.

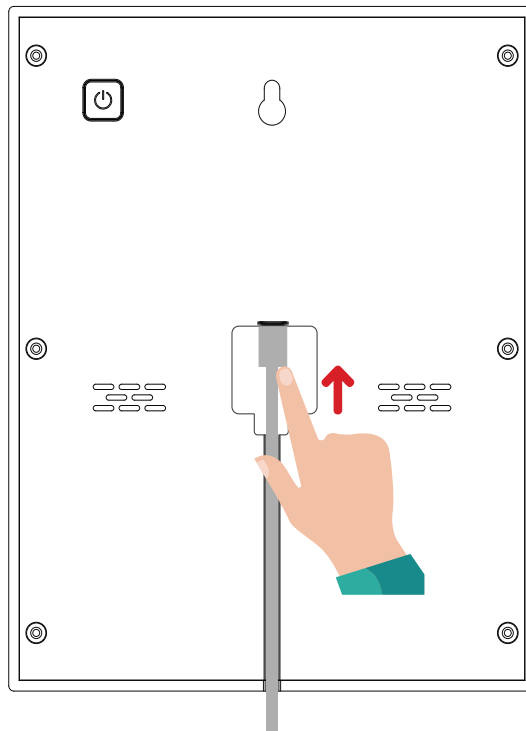
For TYPE-C cable, normal insertion and removal procedures,

**1**



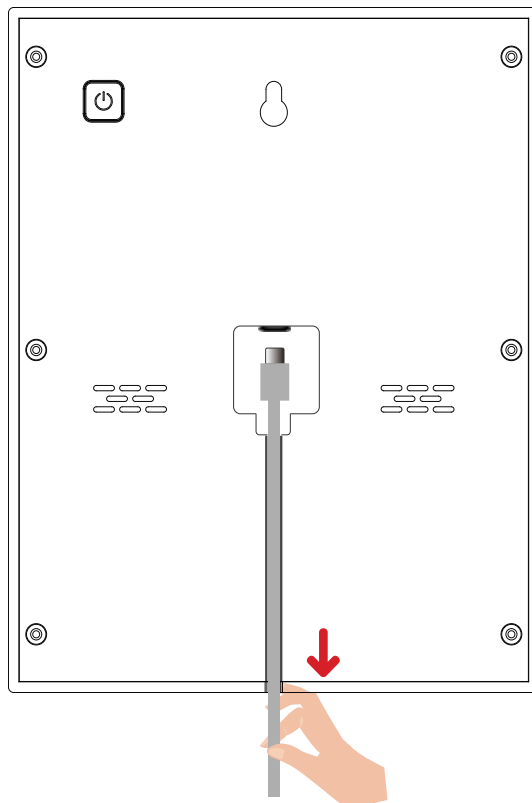
Step 1: Place the device back up horizontally on the desktop.

2



Step 2: put the TYPE-C data cable into the cable slot of the device as shown in the figure, align the interface with the TYPE-C charging port, and push the data cable interface into the charging port with your thumb.

3



step 3, as shown in the figure, just pull the data cable gently from the bottom of the device to disconnect the power supply (do not break the TYPE-C plug from the position, which is easy to damage the TYPE-C head).

**FCC Caution:**

Any changes or modifications not expressly approved by the party responsible for compliance could void the user's authority to operate this equipment.

This device complies with part 15 of the FCC Rules. Operation is subject to the following two conditions:

- (1) this device may not cause harmful interference, and
- (2) this device must accept any interference received, including interference that may cause undesired operation.

This device and its antenna(s) must not be co-located or operating in conjunction with any other antenna or transmitter.

NOTE: This equipment has been tested and found to comply with the limits for a Class B digital device, pursuant to Part 15 of the FCC Rules. These limits are designed to provide reasonable protection against harmful interference in a residential installation. This equipment generates, uses and can radiate radio frequency energy and, if not installed and used in accordance with the instructions, may cause harmful interference to radio communications. However, there is no guarantee that interference will not occur in a particular installation.

If this equipment does cause harmful interference to radio or television reception, which can be determined by turning the equipment off and on, the user is encouraged to try to correct the interference by one or more of the following measures:

- Reorient or relocate the receiving antenna.
- Increase the separation between the equipment and receiver.
- Connect the equipment into an outlet on a circuit different from that to which the receiver is connected.
- Consult the dealer or an experienced radio/TV technician for help. To maintain compliance with FCC's RF Exposure guidelines, This equipment should be installed and operated with minimum distance between 20cm the radiator your body: Use only the supplied antenna.

