

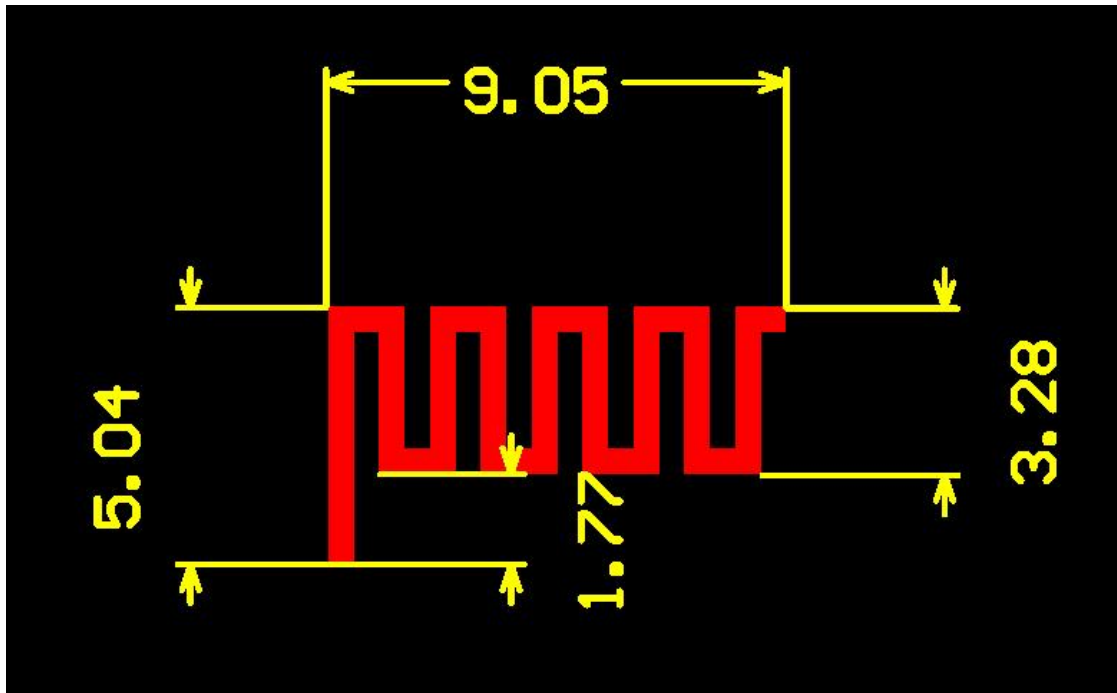
# Product specification

## 1. Technical indicators of products

Frequency Range (MHz)	2400-2500
Band Width (MHz)	100
Impedance ( $Z$ )	50
VSWR	1.8
Return Loss (dB)	-15.3
Peak Gain (dBi)	4.31
Polarization	Linear Vertical
Antenna Material	PCB Antenna
Operating Temp ( $^{\circ}$ C)	-20 ~ 65
Storage Temp (C )	-30 ~ 75

Company: Wen Zhou JinFu Lock Ltd.,  
Address: 48 NO. Gebi Road Zeya Industries, Ouhai, Wenzhou, China

## 2. Product picture

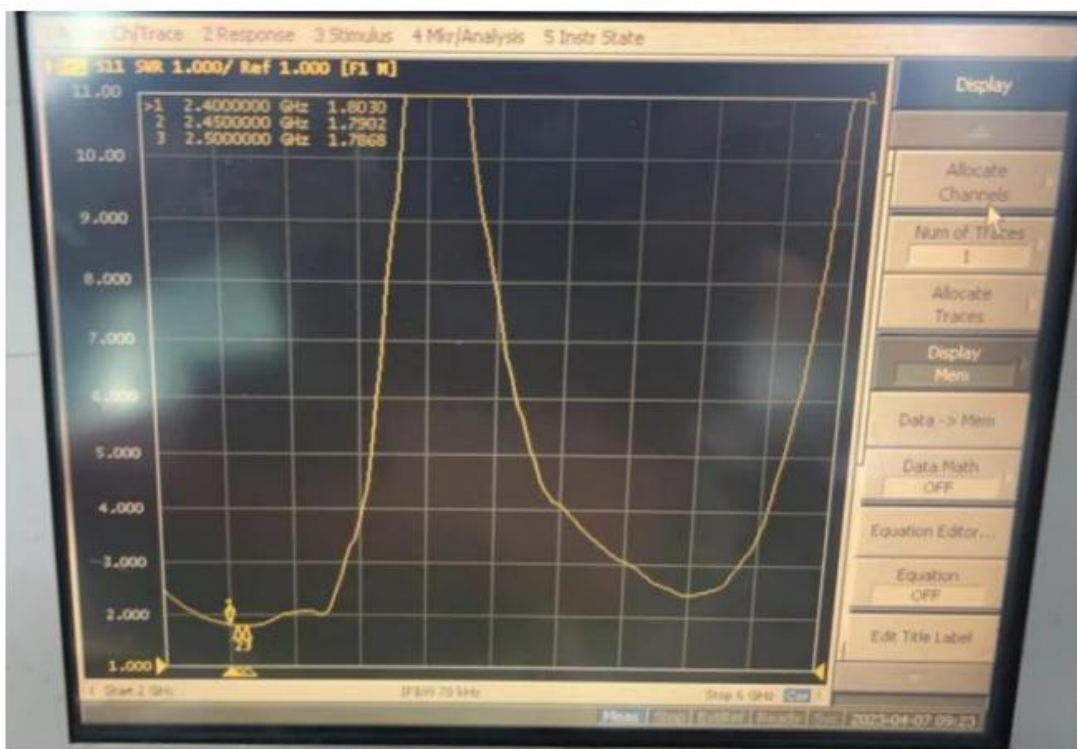


## 3、 Test Data:

S-Parameter test data S-参数量测数据:

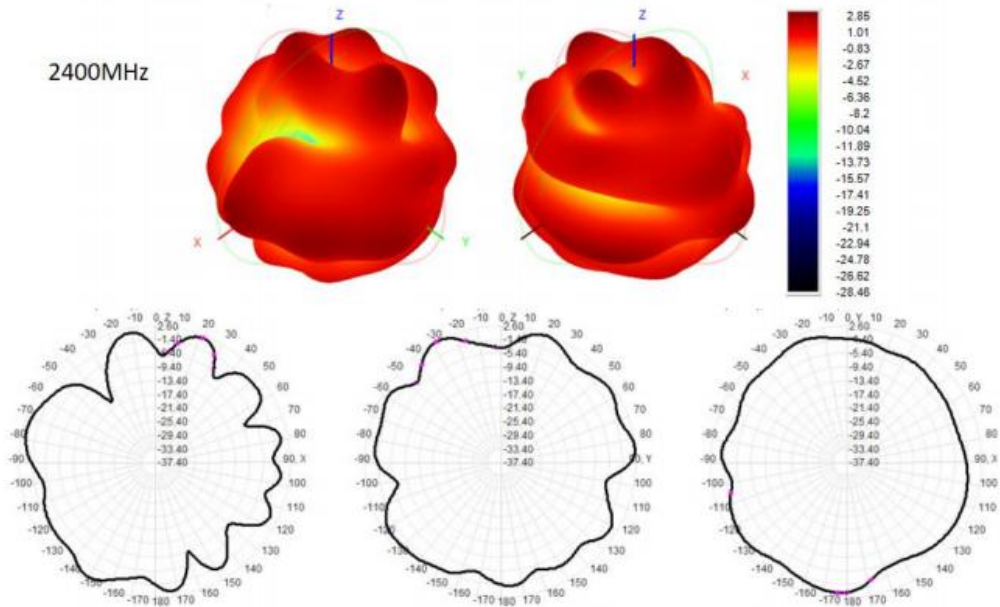
Frequency MHz 工作频段	2400	2450	2500
V.S.W.R 驻波比	1.80	1.79	1.78

S-Parameter test image S-参数量测图片:

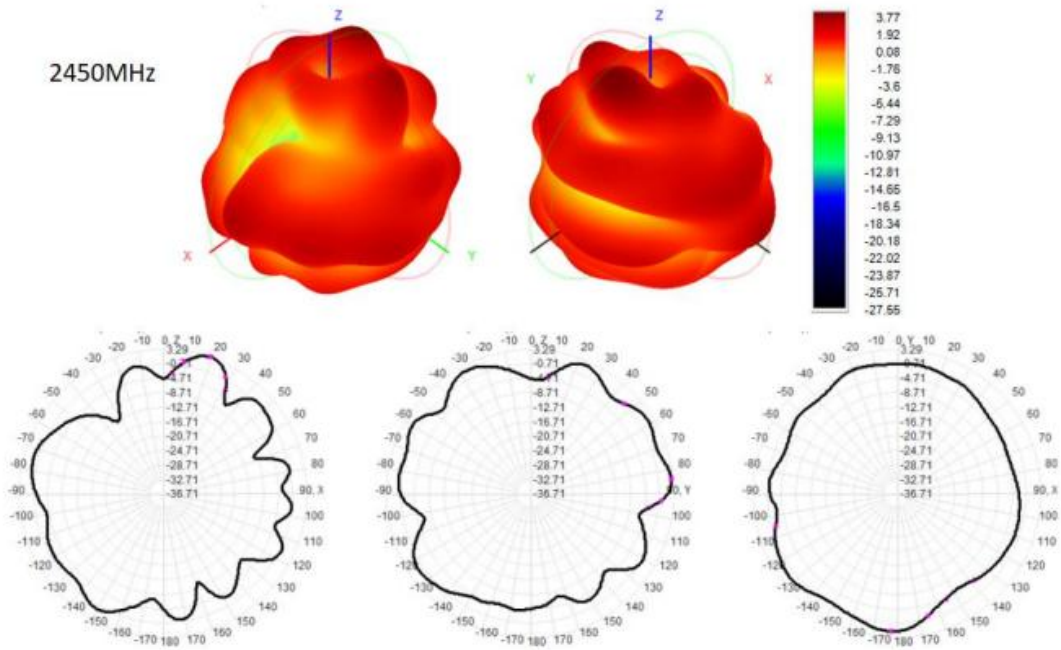


Frequency (MHz) (工作频段)	Efficiency (%) (效率)	Peak GAIN (dBi) (增益)
2400	18.03	2.85
2450	21.04	3.77
2500	17.49	4.31

### 2D、3D



2450MHz



2500MHz

