



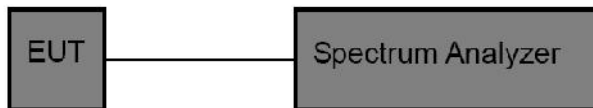
10 Power Spectral density

Test Requirement	: FCC CFR47 Part 15 Section 15.247
Test Method	: ANSI C63.10:2013
Test Limit	: Regulation 15.247(f) The power spectral density conducted from the intentional radiator to the antenna due to the digital modulation operation of the hybrid system, with the frequency hopping operation turned off, shall not be greater than 8 dBm in any 3 kHz band during any time interval of continuous transmission.

10.1 Test Procedure

1. Remove the antenna from the EUT and then connect a low RF cable from the antenna port to the spectrum.
2. Set the spectrum analyzer: RBW = 3kHz. VBW = 10kHz , Span = 1.5 times the DTS channel bandwidth(6 dB bandwidth). Sweep = auto; Detector Function = Peak. Trace = Max hold.
3. Allow the trace to stabilize. Use the marker-delta function to determine the separation between the peaks of the adjacent channels. The limit is specified in one of the subparagraphs of this Section Submit this plot.

10.2 Test Setup



10.3 Test Result

TestMode	Antenna	Frequency[MHz]	Result[dBm/3kHz]	Limit[dBm/3kHz]	Verdict
BLE_1M	Ant1	2402	-25.33	≤8.00	PASS
BLE_1M	Ant1	2440	-25.71	≤8.00	PASS
BLE_1M	Ant1	2480	-25.19	≤8.00	PASS
BLE_2M	Ant1	2402	-27.71	≤8.00	PASS
BLE_2M	Ant1	2440	-28	≤8.00	PASS
BLE_2M	Ant1	2480	-27.59	≤8.00	PASS



Test Graphs:



BLE_1M-Ant1-2402-PASS



BLE_1M-Ant1-2440-PASS



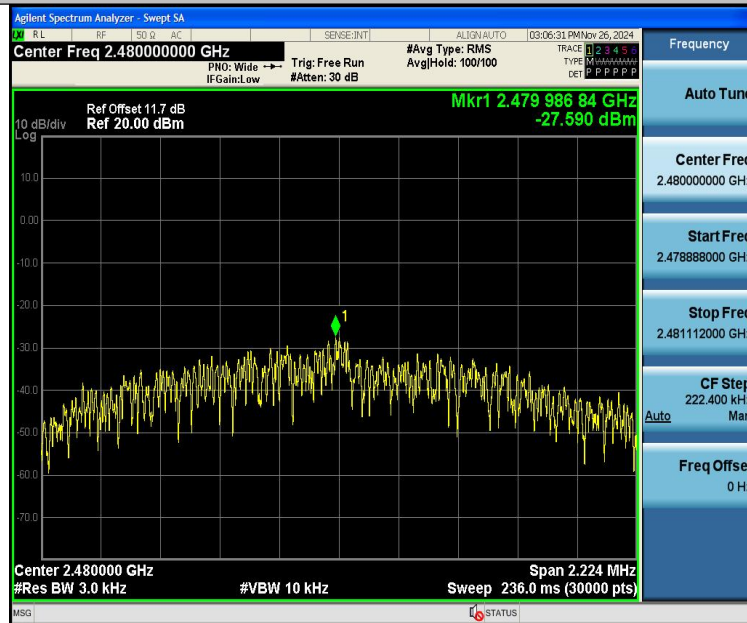
BLE_1M-Ant1-2480-PASS



BLE_2M-Ant1-2402-PASS



BLE_2M-Ant1-2440-PASS



BLE_2M-Ant1-2480-PASS



11 Antenna Application

11.1 Antenna Requirement

For intentional device, according to FCC 47 CFR Section 15.203, an intentional radiator shall be designed to ensure that no antenna other than that furnished by the responsible party shall be used with the device. And according to FCC 47 CFR Section 15.247 (b), if transmitting antennas of directional gain greater than 6dBi are used, the power shall be reduced by the amount in dB that the directional gain of the antenna exceeds 6dBi.

11.2 Result

The EUT'S antenna, permanent attached antenna, is internal PCB antenna. The antenna's gain is -0.32 dBi and meets the requirement.

12 Test Setup

Conducted Emissions



Radiated Spurious Emissions
Test Frequency From 30MHz to 1GHz



Test frequency from Above 1GHz



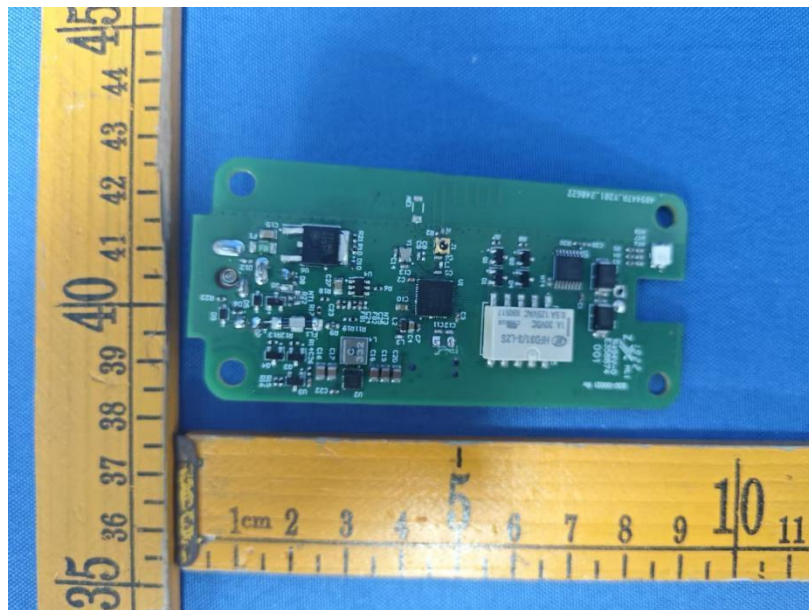
13 EUT Photos

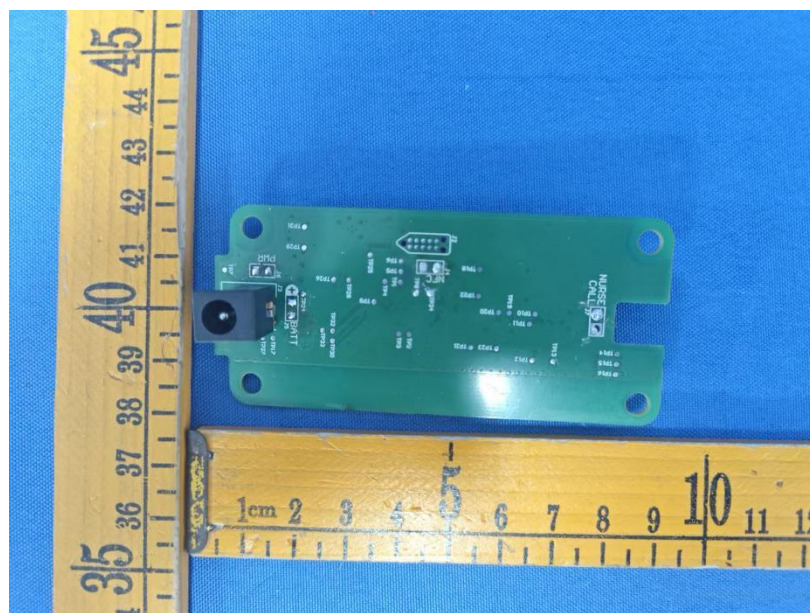
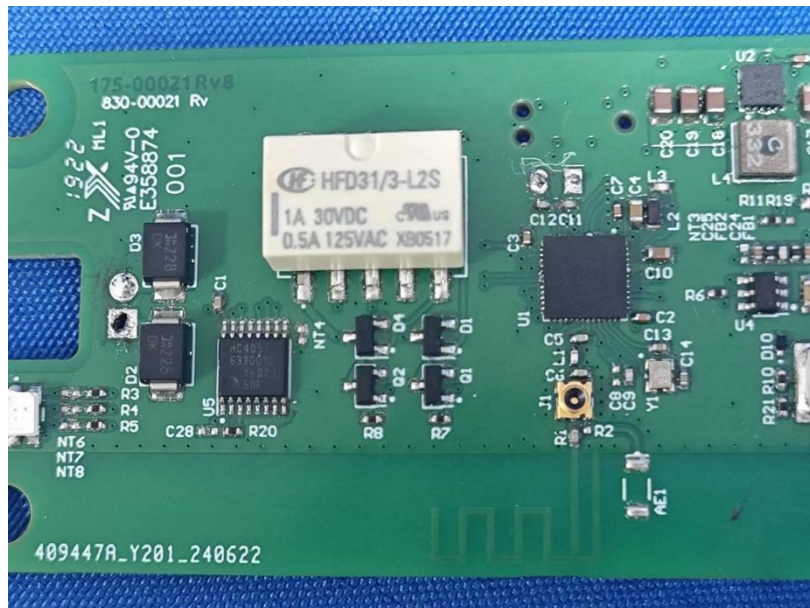


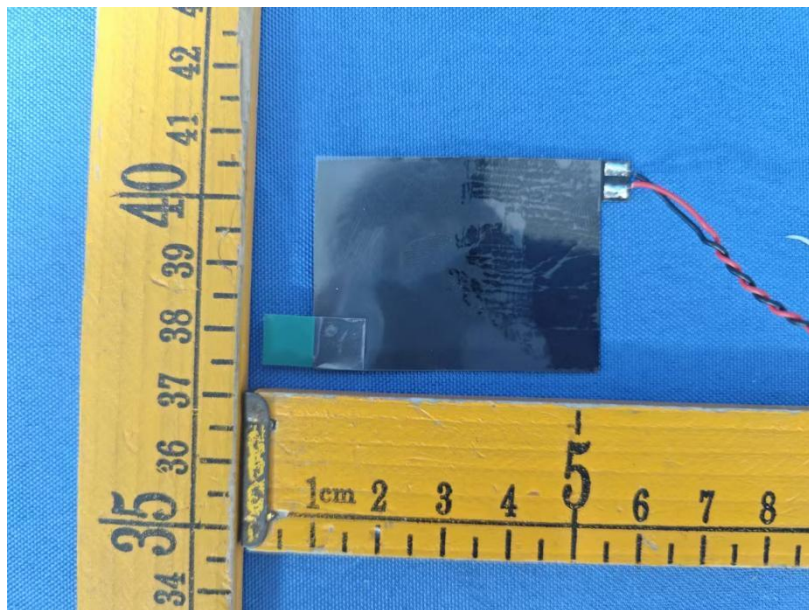
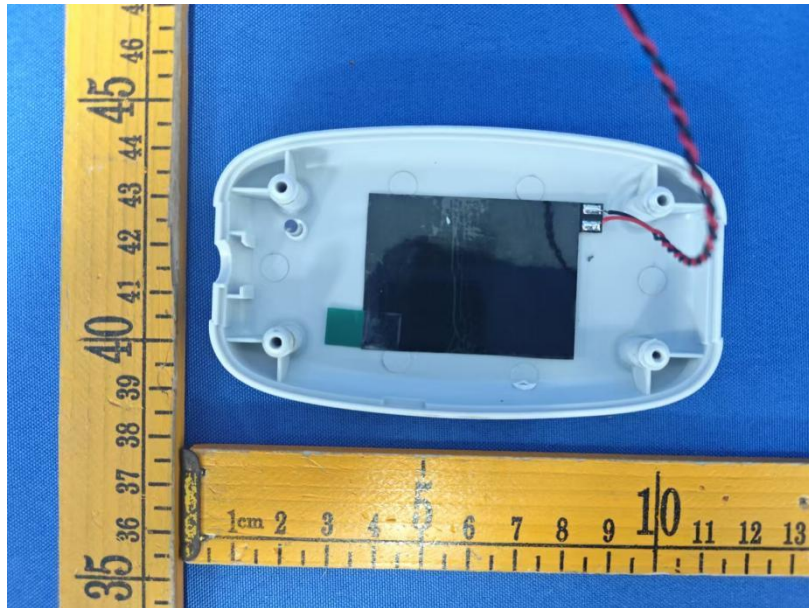


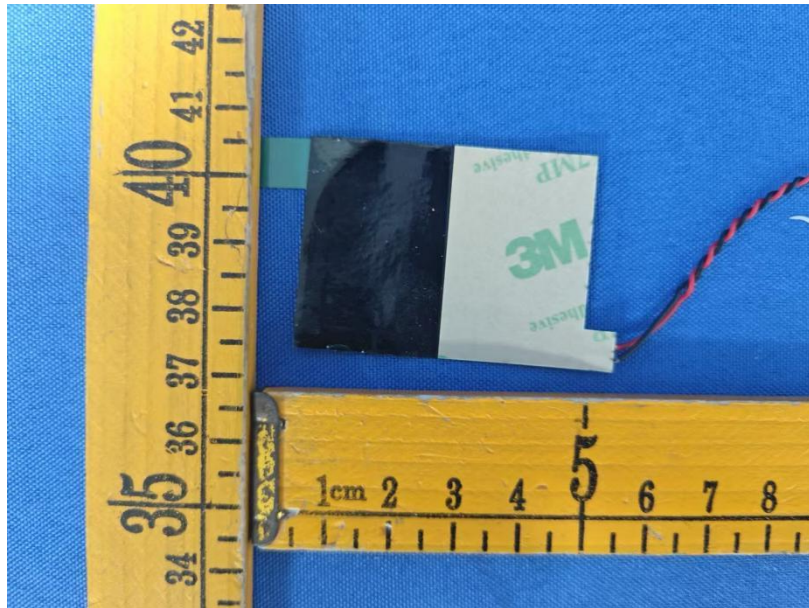












*****THE END REPORT*****