



**Get Started!**



# Friendly Reminder

**Please read the instructions carefully before using this device.**

- Use this device only in open areas. The transmitter should be placed at least 3.5 feet above the ground to avoid obstacles that might interfere with the radio signal. Obstacles like buildings or walls may cause inaccurate distance measurements.
- Not recommended for aggressive dogs. DO NOT use this device if your dog shows aggressive behavior.
- If you're unsure whether this device is suitable for your dog, consult your veterinarian or a certified dog trainer.
- Limit the use of the receiver collar to no more than 12 hours per day.
- If any rash or sore appears, stop using the collar until your dog's skin has healed.
- Always keep your dog's neck clean while using the collar.
- Keep this device out of reach of children.
- This device is designed for use with dogs only.

# Package Contents

## Main Unit



Remote Transmitter



Forbidden Transmitter Module



Electronic Collar Receiver

## Main Unit Accessories:

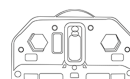
\*1 x Collar strap



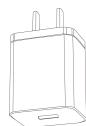
3 x shock probes (short, medium, long)



3 x silicone covers for shock probes



neon test light



Type-C charging adapters



2-in-1 charging cable (magnetic head + Type-C)

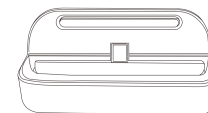
## Kit Accessories:

\*1 x wall mount bracket

\*1 x wristband

\*1 x universal adhesive/tape and screws

\*1 x User Manual



charging base for Forbidden Transmitter



lanyards for remote

# Specifications

1. **Working Mode:** Training Mode, Fence Mode, Forbidden Mode

2. **Distance Range Settings:**

Remote Dog Training Distance: 0–1000FT [approximately 0–300m]

Fence Range: 20–350FT [approximately 6–100m]

Forbidden Range: 3–20FT [approximately 1–6m]

Precision Granularity (Margin of Error): 0–1FT [approximately 0–30cm]

3. **[Training] Feedback Modes:**

Sound: 1-9 levels, 60-80 decibels, buzzer; Vibration: 1-9 levels, intensity increases progressively; Shock: 1-9 levels, intensity increases progressively

4. **[Forbidden/Fence] Feedback Modes:**

Sound Only: Default volume; cycles for 5 rounds

Sound + Vibration: Default intensity; sequentially, cycles for 3 rounds

Sound + Vibration + Shock: Default intensity; sequentially, cycles for 3 rounds

5. **Visual Interface:** Remote Transmitter - LCD screen with 240\*240 resolution

6. **Night Mode:** Collar Light - LED light strip - Steady on/Flashing

7. **Waterproof Rate:** Collar Receiver - IPX7;

8. **Product Dimensions:**

Remote Transmitter: 45\*105\*20mm; Collar Receiver (Strap Length): Min 20cm – Max 60cm; Forbidden Transmitter Module: 60\*60\*20mm

9. **Battery specifications and working time**

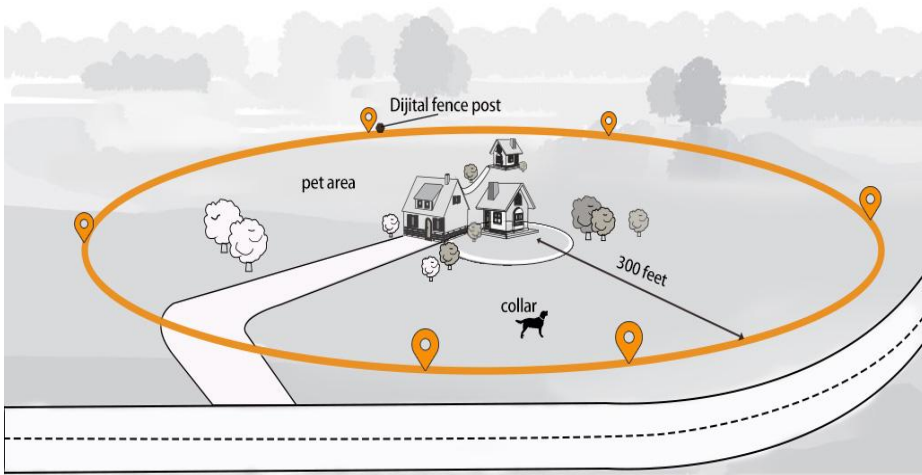
Remote Transmitter: 2500mAh, takes 6-8 hours to fully charge [supports use while charging], lasts 16 hours

Collar Receiver: 1300mAh, takes approximately 3 hours to fully charge, lasts 12-16 hours

Forbidden Transmitter Module: 2500mAh, takes 4-6 hours to fully charge [supports use while charging], lasts 10 hours

# How it works

Fulupet 3-in-1 training system uses UWB (Ultra Wide Band) technology to provide higher precision distance measurement and positioning than 2.4GHz. It features excellent obstacle avoidance and ensures real-time data transmission even in complex indoor environments.



When your dog wears the receiver collar and you set the range using the transmitter, the transmitter will send a radio signal that the receiver detects.

When your dog approaches the preset boundary, the collar will emit a beep warning. If your dog continues toward and crosses the invisible boundary, the Sound, Vibration, or Shock mode will activate. This encourages your dog to return to the safety zone of your yard.

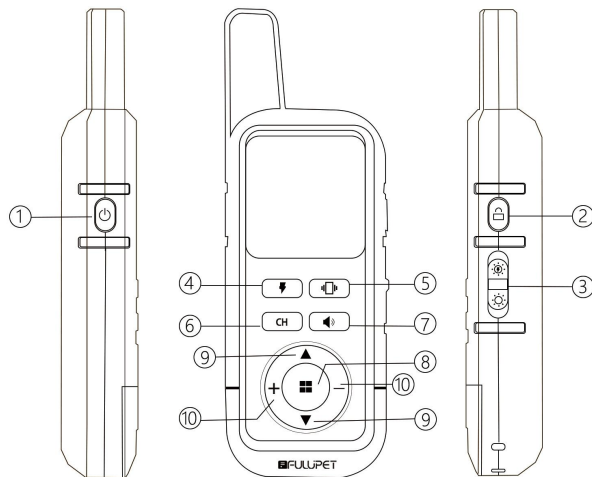


In indoor settings, place the Forbidden Transmitter Module at the center of the area you want to restrict to create a safety boundary.

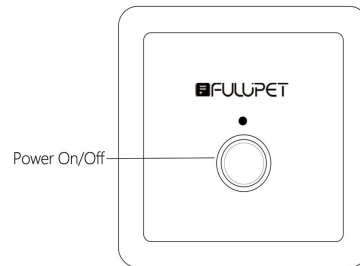
When your dog approaches the boundary, the sound, vibration, or shock warning you've set will activate. This ensures your dog stays outside the restricted area, maintaining safety for both your dog and the forbidden zone.

## Get to know your devices

**Remote Transmitter**



**Forbidden Transmitter Module**



**Electronic Collar Receiver**



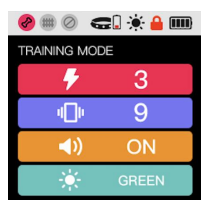
- 1. Power On/Off    2. Lock Button    3. LED Strip Light Switch
- 4. Shock    5. Vibration    6. Mode Change Button    7. Sound
- 8. Settings    9. Up/Down Buttons    10. Increase/Decrease Buttons

**TIPS:** Press and hold the power button on the main devices to turn them on. Both the Forbidden Transmitter Module and the Collar will pair with the remote transmitter automatically.

# Working Modes

Press the **CH button** to switch between **Training Mode**, **Fence Mode**, and **Forbidden Mode**.

Displayed on screen

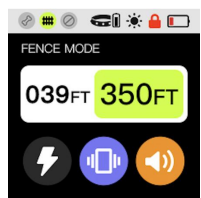


**Training Mode** - the first red icon at the top left of the screen lights up.

There are 3 functions to train your dog: Shock, Vibration, and Sound.

We offer 9 adjustable levels for each function. The higher the number, the stronger the shock, the longer the vibration, and the louder the sound.

Suitable for correcting undesirable behaviors in your dog, such as barking, chewing, biting, chasing, jumping, and digging.



**Fence Mode** - the second green icon at the top left lights up.

The screen shows the current set distance and the real-time distance.

The real-time distance updates as the collar moves. In Fence Mode, you can choose from sound-only feedback, sound+vibration feedback, or sound+vibration+shock feedback.

Suitable for outdoor yards, camping sites, or while you're jogging, providing a safe activity area for your dog.



**Forbidden Mode** - the third blue icon at the top left lights up.

You can pair up to 3 Forbidden Transmitter Module.

The screen shows the set distance and real-time distance for each zone, as well as the feedback settings (same options as Fence Mode). Separate feedback settings for each device are not supported.

Suitable for indoor use to restrict your dog's activity area and ensure safety in specific zones, such as nurseries, wine cabinets, or storage rooms.



## Meaning of other icons

	No Collar device found - Turn on Collar to pair		Light: Solid - night mode illumination		Remote control low battery
	Collar paired, low battery on Collar - Charge Collar		blinking - night mode dog search		
	Collar paired, full battery		Screen locked, icon disappears after the device is unlocked		Remote control full battery



## Understanding the LED

During use, the LED on the Collar/Forbidden Transmitter Module provides information about the current battery charge and connection status, as well as any warnings or corrections being issued to your dog:



### 【Collar Receiver】

LED color	Meaning
White/blue, solid	Working
Red, blinking	The battery is low (less than 25% charged)
Green, blinking	Charging
Green, solid	The battery has sufficient charge.
Current set light strip color, solid	Sound/Vibration/Shock feedback is activated (including manual triggers in Training Mode and wireless triggers)
Current set light strip color, solid/blinking	During operation of the physical buttons on the right side

### 【Forbidden Transmitter Module】

LED color	Meaning
White/blue, solid	Working, includes usage while charging.
Red, blinking	The battery is low (less than 25% charged)
Green, blinking	Charging
Green, solid	The battery has sufficient charge



## Training Your Dog

To get the most out of your containment system during training, follow these tips:

1. Ensure the system is functioning properly, and that the signal field width is set appropriately.
2. Keep training sessions positive and playful.
3. Keep sessions short. Stop if your dog loses interest. Take breaks for rest or play.
4. Always praise your dog for good behavior.



## On-Leash Correction

1. Turn on the transmitter and adjust the boundary range before placing the receiver collar on your dog.
2. Attach the receiver collar and a long leash to your dog.
3. Play with your dog inside the containment area for 2-4 minutes.
4. While controlling your dog with the leash, toss a treat near the boundary flags. As your dog enters the Boundary Zone to retrieve the treat, they will hear a beep and experience mild static stimulation. Let your dog stay in the Boundary Zone for 2 seconds, then gently guide them back into the safe area. Immediately praise and reward your dog with a treat, even if you helped them return. Wiggle a boundary flag to reinforce that the static stimulation occurs near the flags.
5. Repeat this training in various spots around your yard.

## Frequently Asked Questions

<b>Is the 3 in 1 system waterproof?</b>	The Collar Receiver is waterproof, but the Remote Transmitter and Forbidden Transmitter Module are not. Please place them in a weatherproof location.
<b>Can I use more than one receiver collar with the Remote Fence transmitter?</b>	One remote transmitter can pair with two electronic collars. The set includes one electronic collar by default. If needed, you can purchase an additional collar and pair it for use.
<b>How many forbidden zone devices can one remote transmitter pair with at the same time?</b>	One remote transmitter can pair with up to 3 forbidden zone devices simultaneously. In Forbidden Mode, you can set them directly on the remote's screen.
<b>The remote control buttons are not working.</b>	Please check if the lock button is activated. Unlock it before using the remote control.
<b>Will the Wireless Fence keep other pets out of my yard?</b>	No. The Wireless Fence is only effective on pets who wear the receiver collar.
<b>How do I know when it's time to charge?</b>	There is a battery indicator at the top right corner of the remote. If only one red bar is displayed, it means the battery is low and needs charging. When the red light on the electronic collar or forbidden zone device flashes, it indicates a low battery, and they should be charged soon.
<b>Can I attach a leash to the receiver collar?</b>	No. This can result in pulling the contact points too tightly against your pet's neck. Attach a leash to a separate, non-metallic collar positioned above the receiver collar.
<b>Can I leave the electronic collar on my dog all the time?</b>	It is not recommended to keep the electronic collar on your dog continuously. It is advisable to limit usage to no more than 12 hours per day and regularly check your dog's skin condition to ensure there is no chafing or irritation. If you notice any redness or other issues, stop using it immediately.

**FCC Warning Statement:** Changes or modifications to this unit not expressly approved by the party responsible for compliance could void the user's authority to operate the equipment. This equipment has been tested and found to comply with the limits for a Class B digital device, pursuant to Part 15 of the FCC Rules. These limits are designed to provide reasonable protection against harmful interference in a residential installation. This equipment generates, uses and can radiate radio frequency energy and, if not installed and used in accordance with the instructions, may cause harmful interference to radio communications.

However, there is no guarantee that interference will not occur in a particular installation. If this equipment does cause harmful interference to radio or television reception, which can be determined by turning the equipment off and on, the user is encouraged to try to correct the interference by one or more of the following measures:

- Reorient or relocate the receiving antenna.
- Increase the separation between the equipment and receiver.
- Connect the equipment into an outlet on a circuit different from that to which the receiver is connected.
- Consult the dealer or an experienced radio/TV technician for help.

This device complies with Part 15 of the FCC Rules. Operation is subject to the following two conditions: (1) this device may not cause harmful interference, and (2) this device must accept any interference received, including interference that may cause undesired operation.

#### **FCC Radiation Exposure Statement**

The device has been evaluated to meet general RF exposure requirement. The device can be used in portable exposure condition without restriction.