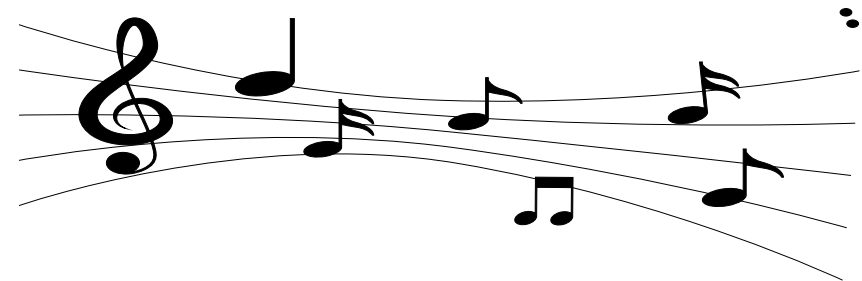


尺寸:长28.5厘米X高21厘米



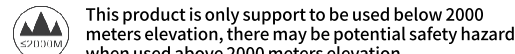
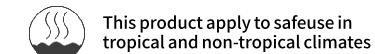
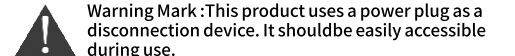
# Karaoke Machine

## Dear customer

Thank you for selecting  
The series of this Rechargeable trolley speaker with good sounds performance, more function for selecting and easy operating.This product supports a variety of audio input and switching, such as USB, SD / TF card (built-in decoder supports MP3 / WMA and other formats), Bluetooth, FM radio, wireless microphone, Line-in, AUX input, microphone / guitar input Etc. (Some models may only support some of the functions listed above, the specific functions must be subject to the actual product).Meet all various demand of user , will be a good choice for entertainment, For more safety and full use of this product , please read this Manual carefully before using.Please keep this manual for reference.  
In order to bring better using experience, please keep the accessories of this product.

## Safety Warning

1. Please use within the specified power range (refer the back plate) ,otherwise will damage the product .
2. Avoid tread , press , drag , fold the power cable and other cable.
3. There are high-voltage parts inside, please do not disassemble the product without authorization, to avoid the risk of electric shock.
4. Pay more attention to the use environment , do not playing in the high temperature, high voltage,moist dusty environment.
5. Turn off the product during the thunderstorms, unplug from the power socket, disconnect to other products.
6. Avoid the crash with tough object, drop from the height and tumble.
7. Do not touch the back plate and other heat dissipation parts when the product working.
8. Using in the well ventilated area, do not cover or put other items on the top of product, and keep proper distance for the product dissipate heat.
9. Forbidden to place liquid on the product,to prevent the product from being tilted/leaked or the risk of electric shock.
10. This product is not suitable for children to operate, please do not settle this product in a place where children can reach.
11. This product has a built-in battery. Do not overcharge for a long time.
12. Infrequently used, please charge it regularly to maintain the built-in battery performance and working life.



## Operating instructions

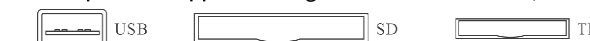
The accessories or marks are installed/printed on the product (all or part, please refer to the actual product), which respectively support the corresponding functions (if have), please follow the instructions to use as below.

## Power input

- a. b. c. AC power input , a/b is power cable jack , c is built-in power cable  
Attention : please using within the specified power range!
- a. b. DC power input, this is for use with adapter or battery;  
Attention : please using within the specified power range!

## Storage media

This product supports storage media such as U disk / SD card / TF card



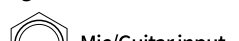
## External input / output

(3.5mm) line-in audio input jack / RCA lotus input jack

(6.35mm) Audio input jack for microphone or guitar

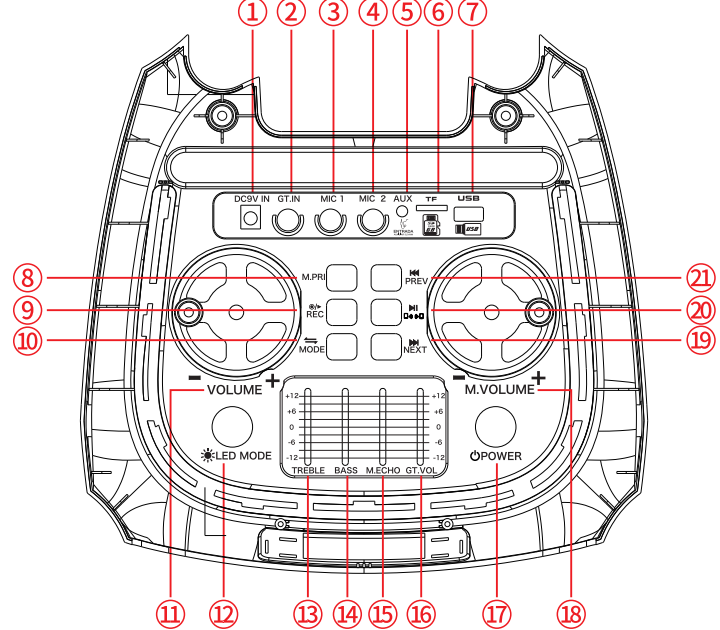


Line-in Aux/Audio input



Mic/Guitar input

## 四. Function is introduced



- |             |              |            |              |
|-------------|--------------|------------|--------------|
| 1. DC 9V IN | 2. GT.IN     | 3. MIC 1   | 4. MIC 2     |
| 5. AUX      | 6. TF        | 7. USB     | 8. M.PRI     |
| 9. REC      | 10. MODE     | 11. VOLUME | 12. LED MODE |
| 13. TREBLE  | 14. BASS     | 15. M.ECHO | 16. GT.VOL   |
| 17. POWER   | 18. M.VOLUME | 19. NEXT   | 20. P/P TWS  |
| 21. PREV    |              |            |              |

## Function of remote

Some products in this series are equipped with remote control, the functions as belows:Note: Some models may have different remote controls. Please refer to the actual comparison operation

⏻ -Power button , supported models can be turned on and off by this button;

🔇 -Mute button, quickly turn off the volume with one click, press again to restore the original volume;

0-9-Number buttons, select songs when playing on storage media such as USB/SD/TF card;

MODE-Mode button, select audio input/Wireless/radio etc functions;  
U/SD-When using U disk and memory card at the same time, choose to play U disk or memory card audio;

⏮-Play / Pause (previous channel/next channel switch in radio function);

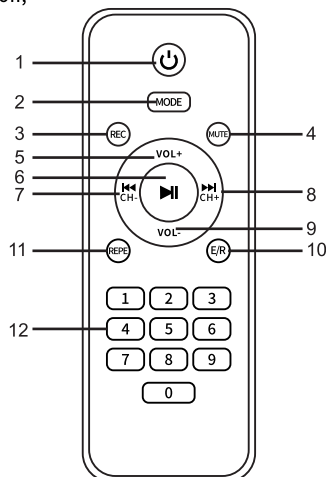
⏪-Previous/Next (Switch to previous/next channel in radio function);

VOL+ -Volume up;

VOL- -Volume down;

EQ- Preset EQ effect switch;

REPE(RPT)-REPE(RPT)-Repeat;



## Common issues and solutions:

phenomenon	reason	solution
No power	Power switch is not turned on	Turn on the power switch
	Built-in battery runs out	Charge the product via adapter or power cable
	The plug is not plugged in properly or the power cable is defective	Reinsert or replace the power cable
	Power outlet is not electric field	Replace the power outlet
No sounds	Other reason	Contact after-sales dept.
	Volume is turn off or mute mode	Adjust the volume or turn off Mute mode
	Source media/input connection selected incorrectly	Select the correct audio media/input connection
	Audio media/input connection selected audio file	Reinsert media with supported format
Microphone no sounds	Other reason	Contact after-sales service
	Microphone volume is off or too low	Adjust microphone volume
	Poor contact	Reinsert o replace the Microphone jack
Distortion of sounds	Other reason	Contact after-sales service
	Poor audio signal or volume too large	Adjust audio files / signals or reduce volume
Squeal from Microphone	Battery running low	Full charged before using
	The microphone volume is too loud or too close to the speakers	Adjust microphone volume and keep properly distance from speakers

## Tips:

- o protect your hearing from damage and avoid affecting others, recommends that do not use this product at high volume for long time.

In order to bring better using experience, please keep the accessories of this product.

## Bluetooth :

1. Turn on the Bluetooth of the smart phone
2. Press the mode switch of the speaker to switch the mode to BT
3. Select "XP2" from the Bluetooth of the smart phone. If you can't find "XP2", please search your smartphone's Bluetooth on ONIL again.)

## AUX-IN :

3.5mm audio cable into the AUX|N jack. The speaker will automatically play the audio from the incoming device.

## USB/TF :

When the USB/TF port is plugged in, the speaker will start playing the audio on the USB/TF.

## TF Card/USB Card Recording Procedure :

- 1.First, prepare your microphone and USB card. Press the button in the center of the microphone all the way in to ensure it is turned on. Then, insert the USB card into the USB port.  
(Note: The USB card must contain playable music files. Otherwise, the speaker will not recognize the USB mode.)
- 2.Upon inserting the USB card, the speaker will automatically start playing music and switch to USB mode. There is no need to manually switch to USB mode.
- 3.Once the system announces "Switched to USB mode," the recording setup is ready. Before starting recording, briefly press the play/pause button to pause the music (otherwise, the music will be recorded along with the audio). After pausing the music, press and hold the record button to turn on the microphone and start recording. To stop recording, press the record button briefly again. The recording will stop, and the last recording will be played back. (Note: Deleting recordings cannot be done on the speaker itself.)  
The procedure is the same for TF cards, so please verify accordingly.

## TWS FUNCTION :

Using TWS mode requires two XP2 systems. The setting method is as follows:

1. Switch the two speakers to Bluetooth mode (the speaker indicator light is blue). Press TWS switch with
- 2:1 speaker. This will pair the two speakers and change the indicator light from flashing to on (the light stops).
- 3: After the pairing is completed, press and hold TWS to release the pairing. (If in doubt, please contact customer service) annajp123@outlook.com, please contact me and ask them to send the video. )

## FCC Warning

This device complies with Part 15 of the FCC Rules. Operation is subject to the following two conditions:  
(1) This device may not cause harmful interference, and (2) this device must accept any interference received, including interference that may cause undesired operation.

NOTE 1: This equipment has been tested and found to comply with the limits for a Class B digital device, pursuant to part 15 of the FCC Rules. These limits are designed to provide reasonable protection against harmful interference in a residential installation. This equipment generates, uses and can radiate radio frequency energy and, if not installed and used in accordance with the instructions, may cause harmful interference to radio communications. However, there is no guarantee that interference will not occur in a particular installation. If this equipment does cause harmful interference to radio or television reception, which can be determined by turning the equipment off and on, the user is encouraged to try to correct the interference by one or more of the following measures:

- Reorient or relocate the receiving antenna.
- Increase the separation between the equipment and receiver.
- Connect the equipment into an outlet on a circuit different from that to which the receiver is connected.
- Consult the dealer or an experienced radio/TV technician for help.

NOTE 2: Any changes or modifications to this unit not expressly approved by the party responsible for compliance could void the user's authority to operate the equipment.

The device has been evaluated to meet general RF exposure requirement. The device can be used in portable exposure condition without restriction.