

TEST REPORT

Report No.	CISRR250221105
Project No.	CISR250221105
FCC ID	2BLPG-DXCP27MINI
Applicant	Shenzhen Daxia Longque Technology Co., Ltd
Address	Block 601, A, Huafeng Zhigu-Hangcheng High-tech Industrial Park, Bao'an District, Shenzhen, China
Manufacturer	Shenzhen Daxia Longque Technology Co., Ltd
Address	Block 601, A, Huafeng Zhigu-Hangcheng High-tech Industrial Park, Bao'an District, Shenzhen, China
Product Name	Bluetooth beacon
Trade Mark	N/A
Model/Type reference	DX-CP27 MINI
Listed Model(s)	DX-CP27-NFC, DX-CP30, DX-CP30-NFC
Standard	47 CFR Part 15.247
Test date	February 22, 2025 to March 18, 2025
Issue date	March 18, 2025
Test result	Complied



Prepared by: Edward Wang



Approved by: Genry Long

Contents

1. REPORT VERSION	3
2. TEST DESCRIPTION	4
3. SUMMARY	5
3.1. Product Description *	5
3.2. Radio Specification Description *	5
3.3. Modification of EUT	5
3.4. Deviation from standards	5
3.5. Testing Site	6
4. TEST CONFIGURATION	7
4.1. Test frequency list	7
4.2. Descriptions of test mode	7
4.3. Support unit used in test configuration	7
4.4. Test sample information	7
4.5. Environmental conditions	7
4.6. Equipment Used during the Test	8
5. TEST RESULTS	10
5.1. Evaluation Results (Evaluation)	10
5.1.1. Antenna Requirement	10
5.2. Radio Spectrum Matter Test Results (RF)	11
5.2.1. 6dB Bandwidth	11
5.2.2. Maximum Conducted Output Power	12
5.2.3. Power Spectral Density	13
5.2.4. Conducted band edge and spurious emission	14
5.2.5. Radiated band edge emission	15
5.2.6. Radiated Spurious Emission (below 1GHz)	21
5.2.7. Radiated Spurious Emission (Above 1GHz)	25
6. TEST SETUP PHOTOS	33
7. EXTERNAL AND INTERNAL PHOTOS	34
7.1. External Photos	34
7.2. Internal Photos	38
8. APPENDIX REPORT	42

1. REPORT VERSION

Version No.	Issue date	Description
00	March 18, 2025	Original

2. TEST DESCRIPTION

No.	Test Item	Standard Requirement	Result
1	Antenna Requirement	47 CFR 15.203	Pass
2	6dB Bandwidth	47 CFR 15.247(a)(2)	Pass
3	Maximum Conducted Output Power	47 CFR 15.247(b)(3)	Pass
4	Power Spectral Density	47 CFR 15.247(e)	Pass
5	Conducted band edge and spurious emission	47 CFR 15.247(d), 15.209, 15.205	Pass
6	Radiated band edge emission	47 CFR 15.247(d), 15.209, 15.205	Pass
7	Radiated Spurious Emission (below 1GHz)	47 CFR 15.247(d), 15.209, 15.205	Pass
8	Radiated Spurious Emission (Above 1GHz)	47 CFR 15.247(d), 15.209, 15.205	Pass

Note:

- The measurement uncertainty is not included in the test result.

3. SUMMARY

3.1. Product Description *

Main unit information:	
Product Name:	Bluetooth beacon
Trade Mark:	N/A
Model No.:	DX-CP27 MINI
Listed Model(s):	DX-CP27-NFC, DX-CP30, DX-CP30-NFC
Model difference:	The series model is the same product, there are not any different in material or color changed, with only different model names due to marketing sales.
Power supply:	DC 3V
Hardware version:	N/A
Software version:	N/A
Accessory unit information:	
Battery information:	DC 3V

3.2. Radio Specification Description *

Modulation type:	GFSK
Operation frequency:	2402MHz to 2480MHz
Channel number:	40
Channel separation:	2MHz
Antenna type:	PCB Antenna
Antenna gain:	-0.1dBi

Note:

- 1) *: Since the above information is provided by the applicant relevant results or conclusions of this report are only made for these information, Bangce is not responsible for the authenticity, integrity and results of the information and/or the validity of the conclusion.

3.3. Modification of EUT

No modifications are made to the EUT during all test items.

3.4. Deviation from standards

None

3.5. Testing Site

Laboratory Name	Shenzhen Bangce Testing Technology Co., Ltd.
Laboratory Location	101, building 10, Yunli Intelligent Park, Shutianpu community, Matian Street, Guangming District, Shenzhen, Guangdong, China
Contact information	Tel: 86-755-2319 6848, email: service@cis-cn.net Website: http://www.cis-cn.net/
FCC registration number	736346
FCC designation number	CN1372

4. TEST CONFIGURATION

4.1. Test frequency list

Lowest Channel (LCH) (MHz)	Middle Channel (MCH) (MHz)	Highest Channel (HCH) (MHz)
2402	2440	2480

4.2. Descriptions of test mode

No	Test mode	Description
TM1	TX mode	Keep the EUT in continuously transmitting mode with GFSK modulation at lowest, middle and highest channel.
TM2	Link mode	Keep the EUT in Bluetooth linking mode with AE.

4.3. Support unit used in test configuration

The EUT has been associated with peripherals and configuration operated in a manner tended to maximize its emission characteristics in a typical application.

The following peripheral devices and interface cables were connected during the measurement:

Item	Equipment name	Trade Name	Model No.
1	Adapter	Guangdong Sangu Technology Co. Ltd	SG-0501000AU
2	Phone	Huawei	NZONE S7

4.4. Test sample information

Type	Sample No.
Engineer sample	CISR250221105-S01
Normal sample	CISR250221105-S02

4.5. Environmental conditions

Type	Requirement
Temperature:	15~35°C
Relative Humidity:	25~75%
Air Pressure:	860~1060mbar

4.6. Equipment Used during the Test

Maximum Conducted Output Power
Power Spectral Density
Emissions in non-restricted frequency bands
6dB Bandwidth

Item	Equipment name	Manufacturer	Model	Serial No.	Calibration date	Due date
1	MXG RF Signal Generator	Agilent	N5181A	MY50145362	2025-01-08	2026-01-07
2	Spectrum analyzer	R&S	FSV-40N	102130	2025-01-08	2026-01-07
3	Vector Signal Generator	Agilent	N5182A	MY50142364	2025-01-08	2026-01-07
4	Power Meter	WCS	WCS-PM	WCSPM23040 5A	2025-01-08	2026-01-07

Band edge emissions (Radiated)
Emissions in frequency bands (below 1GHz)
Emissions in frequency bands (above 1GHz)

Item	Equipment name	Manufacturer	Model	Serial No.	Calibration date	Due date
1	EMI Test Receiver	Rohde&schwarz	ESCI7	100853	2025-01-08	2026-01-07
2	Amplifier	Tonscend	TAP9K3G 40	AP23A806027 0	2025-01-08	2026-01-07
3	Prime amplifier	Tonscend	TAP0101 8050	AP23A806028 0	2025-01-08	2026-01-07
4	9*6*6 anechoic chamber	SKET	9.3*6.3*6	N/A	2024-09-02	2027-09-01
5	Spectrum analyzer	Agilent	N9020A	MY50530263	2025-01-08	2026-01-07
6	Spectrum analyzer	R&S	FSV-40N	102130	2025-01-08	2026-01-07
7	Bilog Antenna	Schwarzbeck	VULB 9163	1463	2023-01-09	2026-01-08
8	Horn Antenna	SCHWARZBECK	BBHA 9120 D	2487	2023-01-09	2026-01-08
9	Active Loop Antenna	SCHWARZBECK	FMZB 1519B	/	2023-01-09	2026-01-08
10	RF Cable	Tonscend	Cable 1	/	2025-01-08	2026-01-07
11	RF Cable	Tonscend	Cable 2	/	2025-01-08	2026-01-07
12	RF Cable	SKET	Cable 3	/	2025-01-08	2026-01-07
13	L.I.S.N.#1	Schwarzbeck	NSLK812 7	/	2025-01-08	2026-01-07
14	L.I.S.N.#2	ROHDE&SCHWARZ	ENV216	/	2025-01-08	2026-01-07
15	Horn Antenna	SCHWARZBECK	BBHA917 0	1130	2023-01-09	2026-01-08
16	Preamplifier	Tonscend	TAP1804 0048	AP21C806126	2025-01-08	2026-01-07

17	Variable-frequency power source	Pinhong	PH1110	/	2025-01-08	2026-01-07
18	6dB Attenuator	SKET	DC-6G	/	2025-01-08	2026-01-07
19	Antenna tower	SKT	Bk-4AT-BS	AT202104010 1-V1	2025-01-08	2026-01-07

5. TEST RESULTS

5.1. Evaluation Results (Evaluation)

5.1.1. Antenna Requirement

Test Requirement:	Refer to 47 CFR Part 15.203, an intentional radiator shall be designed to ensure that no antenna other than that furnished by the responsible party shall be used with the device. The use of a permanently attached antenna or of an antenna that uses a unique coupling to the intentional radiator shall be considered sufficient to comply with the provisions of this section.
--------------------------	---

5.1.1.1. Test Result

Pass

5.1.1.2. Conclusion:

The EUT antenna is PCB Antenna(-0.1dBi), the directional gain of the antenna less than 6dBi. It comply with the standard requirement. In case of replacement of broken antenna the same antenna type must be used. Antenna structure please refer to the EUT internal photographs antenna photo.
--

5.2. Radio Spectrum Matter Test Results (RF)

5.2.1. 6dB Bandwidth

Test Requirement:	47 CFR 15.247(a)(2)
Test Limit:	Refer to 47 CFR 15.247(a)(2), Systems using digital modulation techniques may operate in the 902-928 MHz, and 2400-2483.5 MHz bands. The minimum 6 dB bandwidth shall be at least 500 kHz.
Test Method:	ANSI C63.10-2020, section 11.8
Procedure:	<p>11.8.1 Option 1 The steps for the first option are as follows: a) Set RBW = shall be in the range of 1% to 5% of the OBW but not less than 100 kHz. b) Set the VBW $\geq [3 \times \text{RBW}]$. c) Detector = peak. d) Trace mode = max-hold. e) Sweep = No faster than coupled (auto) time. f) Allow the trace to stabilize. g) Measure the maximum width of the emission by placing two markers, one at the lowest frequency and the other at the highest frequency of the envelope of the spectral display, such that each marker is at or slightly below the “-6 dB down amplitude”. If a marker is below this “-6 dB down amplitude” value, then it shall be as close as possible to this value.</p> <p>11.8.2 Option 2 The automatic bandwidth measurement capability of an instrument may be employed using the X dB bandwidth mode with X set to 6 dB, if the functionality described in 11.8.1 (i.e., RBW = 100 kHz, VBW $\geq 3 \times \text{RBW}$, and peak detector with maximum hold) is implemented by the instrumentation function. When using this capability, care shall be taken so that the bandwidth measurement is not influenced by any intermediate power nulls in the fundamental emission that might be ≥ 6 dB.</p>

5.2.1.1. E.U.T. Operation

Operating Environment:					
Temperature:	23.3 °C	Humidity:	55.7 %	Atmospheric Pressure:	102 kPa
Pre test mode:	TM1				
Final test mode:	TM1				

5.2.1.2. Test Setup Diagram



5.2.1.3. Test Result

Pass

5.2.1.4. Test Data

Please Refer to Appendix for Details.

5.2.2. Maximum Conducted Output Power

Test Requirement:	47 CFR 15.247(b)(3)
Test Limit:	Refer to 47 CFR 15.247(b)(3), For systems using digital modulation in the 902-928 MHz, 2400-2483.5 MHz, and 5725-5850 MHz bands: 1 Watt. As an alternative to a peak power measurement, compliance with the one Watt limit can be based on a measurement of the maximum conducted output power. Maximum Conducted Output Power is defined as the total transmit power delivered to all antennas and antenna elements averaged across all symbols in the signaling alphabet when the transmitter is operating at its maximum power control level. Power must be summed across all antennas and antenna elements. The average must not include any time intervals during which the transmitter is off or is transmitting at a reduced power level. If multiple modes of operation are possible (e.g., alternative modulation methods), the maximum conducted output power is the highest total transmit power occurring in any mode.
Test Method:	ANSI C63.10-2020 section 11.9.1
Procedure:	ANSI C63.10-2020, section 11.9.1 Maximum peak conducted output power

5.2.2.1. E.U.T. Operation

Operating Environment:					
Temperature:	23.3 °C	Humidity:	55.7 %	Atmospheric Pressure:	102 kPa
Pre test mode:	TM1				
Final test mode:	TM1				

5.2.2.2. Test Setup Diagram



5.2.2.3. Test Result

Pass

5.2.2.4. Test Data

Please Refer to Appendix for Details.

5.2.3. Power Spectral Density

Test Requirement:	47 CFR 15.247(e)
Test Limit:	Refer to 47 CFR 15.247(e), For digitally modulated systems, the power spectral density conducted from the intentional radiator to the antenna shall not be greater than 8 dBm in any 3 kHz band during any time interval of continuous transmission. This power spectral density shall be determined in accordance with the provisions of paragraph (b) of this section. The same method of determining the conducted output power shall be used to determine the power spectral density.
Test Method:	ANSI C63.10-2020, section 11.10
Procedure:	ANSI C63.10-2020, section 11.10, Maximum power spectral density level in the fundamental emission

5.2.3.1. E.U.T. Operation

Operating Environment:					
Temperature:	23.3 °C	Humidity:	55.7 %	Atmospheric Pressure:	102 kPa
Pre test mode:	TM1				
Final test mode:	TM1				

5.2.3.2. Test Setup Diagram



5.2.3.3. Test Result

Pass

5.2.3.4. Test Data

Please Refer to Appendix for Details.

5.2.4. Conducted band edge and spurious emission

Test Requirement:	47 CFR 15.247(d), 15.209, 15.205
Test Limit:	Refer to 47 CFR 15.247(d), In any 100 kHz bandwidth outside the frequency band in which the spread spectrum or digitally modulated intentional radiator is operating, the radio frequency power that is produced by the intentional radiator shall be at least 20 dB below that in the 100 kHz bandwidth within the band that contains the highest level of the desired power, based on either an RF conducted or a radiated measurement, provided the transmitter demonstrates compliance with the peak conducted power limits. If the transmitter complies with the conducted power limits based on the use of RMS averaging over a time interval, as permitted under paragraph (b)(3) of this section, the attenuation required under this paragraph shall be 30 dB instead of 20 dB. Attenuation below the general limits specified in § 15.209(a) is not required.
Test Method:	ANSI C63.10-2020 section 11.11
Procedure:	ANSI C63.10-2020 Section 11.11.1, Section 11.11.2, Section 11.11.3

5.2.4.1. E.U.T. Operation

Operating Environment:					
Temperature:	23.3 °C	Humidity:	55.7 %	Atmospheric Pressure:	102 kPa
Pre test mode:	TM1				
Final test mode:	TM1				

5.2.4.2. Test Setup Diagram



5.2.4.3. Test Result

Pass

5.2.4.4. Test Data

Please Refer to Appendix for Details.

5.2.5. Radiated band edge emission

Test Requirement:	Refer to 47 CFR 15.247(d), In addition, radiated emissions which fall in the restricted bands, as defined in § 15.205(a), must also comply with the radiated emission limits specified in § 15.209(a)(see § 15.205(c)).`		
Test Limit:	Frequency (MHz)	Field strength (microvolts/meter)	Measurement distance (meters)
	0.009-0.490	2400/F(kHz)	300
	0.490-1.705	24000/F(kHz)	30
	1.705-30.0	30	30
	30-88	100 **	3
	88-216	150 **	3
	216-960	200 **	3
	Above 960	500	3
<p>** Except as provided in paragraph (g), fundamental emissions from intentional radiators operating under this section shall not be located in the frequency bands 54-72 MHz, 76-88 MHz, 174-216 MHz or 470-806 MHz. However, operation within these frequency bands is permitted under other sections of this part, e.g., §§ 15.231 and 15.241.</p> <p>In the emission table above, the tighter limit applies at the band edges.</p> <p>The emission limits shown in the above table are based on measurements employing a CISPR quasi-peak detector except for the frequency bands 9–90 kHz, 110–490 kHz and above 1000 MHz. Radiated emission limits in these three bands are based on measurements employing an average detector.</p>			
Test Method:	ANSI C63.10-2020 section 6.10		
Procedure:	<p>1. EUT was setup and tested according to ANSI C63.10 .</p> <p>2. The EUT is placed on a turn table which is 1.5 meter above ground. The turn table is rotated 360 degrees to determine the position of the maximum emission level.</p> <p>3. The EUT was positioned such that the distance from antenna to the EUT was 3 meters.</p> <p>4. The antenna is scanned from 1 meter to 4 meters to find out the maximum emission level. This is repeated for both horizontal and vertical polarization of the antenna. In order to find the maximum emission, all of the interface cables were manipulated according to ANSI C63.10 on radiated measurement.</p> <p>5. Use the following spectrum analyzer settings:</p> <p>a) Span shall wide enough to fully capture the emission being measured</p> <p>b) Set RBW=1MHz, VBW=3MHz for >1GHz, Sweep time=auto, Detector=peak, Trace=max hold for Peak measurement</p> <p>For average measurement: use duty cycle correction factor method (DCCF), Averager level = Peak level + DCCF</p>		

5.2.5.1. E.U.T. Operation

Operating Environment:					
Temperature:	22.6 °C	Humidity:	55.8 %	Atmospheric Pressure:	102 kPa
Pre test mode:	TM1				
Final test mode:	TM1				

5.2.5.2. Test Setup Diagram



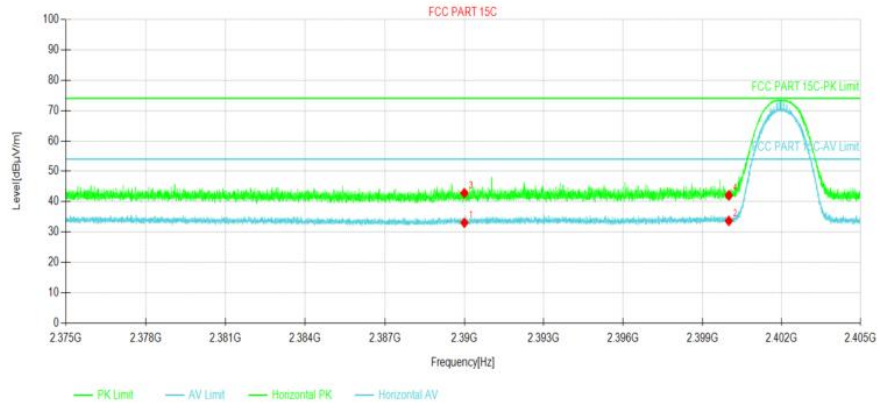
5.2.5.3. Test Result

Pass

5.2.5.4. Test Data

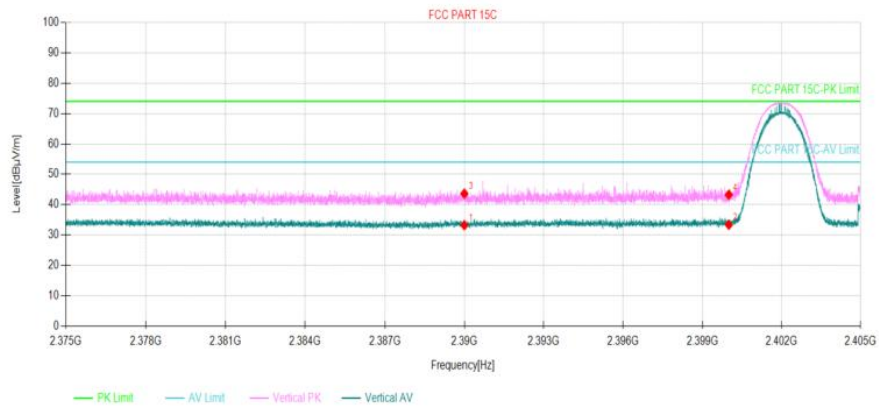
Have pre-scan all test mode, found GFSK 1M mode which it was worst case, so only show the worst case' s data on this report.

Mode1 / Polarization: Horizontal / CH: L



Suspected Data List								
NO.	Freq. [MHz]	Reading [dBµV/m]	Level [dBµV/m]	Factor [dB]	Limit [dBµV/m]	Margin [dB]	Polarity	Verdict
1	2390	26.49	33.05	6.56	54.00	20.95	Horizontal	PASS
2	2400.00	27.07	33.68	6.61	54.00	20.32	Horizontal	PASS
3	2390	36.26	42.82	6.56	74.00	31.18	Horizontal	PASS
4	2400.00	35.45	42.06	6.61	74.00	31.94	Horizontal	PASS

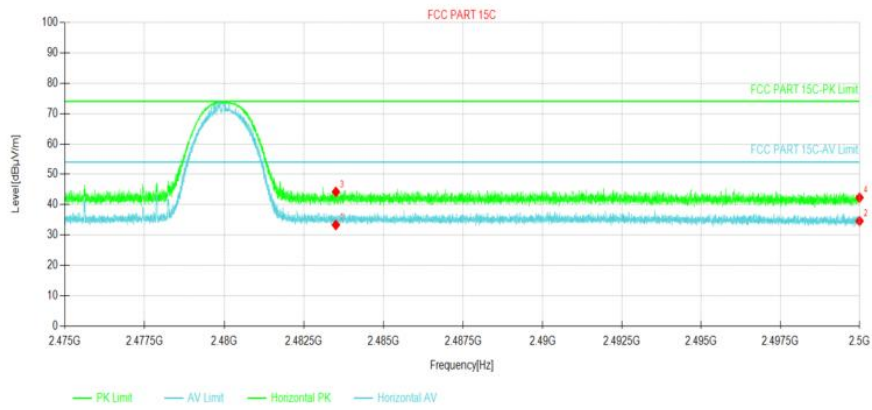
Mode1 / Polarization: Vertical / CH: L



Suspected Data List

NO.	Freq. [MHz]	Reading [dBμV/m]	Level [dBμV/m]	Factor [dB]	Limit [dBμV/m]	Margin [dB]	Polarity	Verdict
1	2390	26.67	33.23	6.56	54.00	20.77	Vertical	PASS
2	2400.00	26.77	33.38	6.61	54.00	20.62	Vertical	PASS
3	2390	37.08	43.64	6.56	74.00	30.36	Vertical	PASS
4	2400.00	36.66	43.27	6.61	74.00	30.73	Vertical	PASS

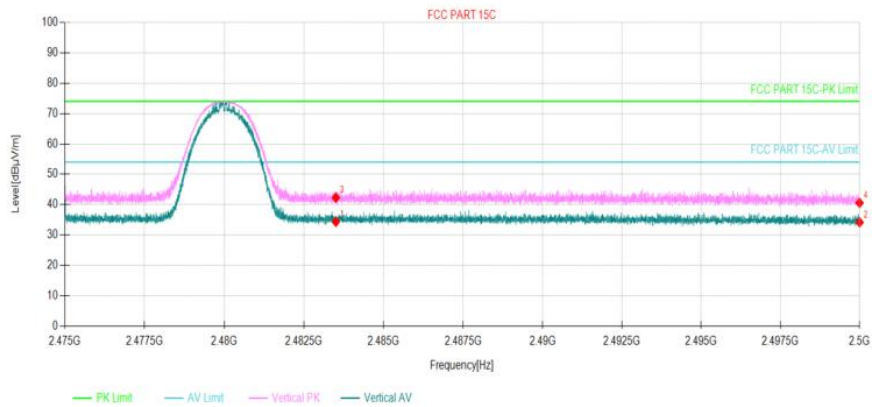
Mode1 / Polarization: Horizontal / CH: H



Suspected Data List

NO.	Freq. [MHz]	Reading [dBμV/m]	Level [dBμV/m]	Factor [dB]	Limit [dBμV/m]	Margin [dB]	Polarity	Verdict
1	2483.5	26.75	33.31	6.56	54.00	20.69	Horizontal	PASS
2	2500	28.06	34.61	6.55	54.00	19.39	Horizontal	PASS
3	2483.5	37.66	44.22	6.56	74.00	29.78	Horizontal	PASS
4	2500	35.77	42.32	6.55	74.00	31.68	Horizontal	PASS

Mode1 / Polarization: Vertical / CH: H



Suspected Data List

NO.	Freq. [MHz]	Reading [dBμV/m]	Level [dBμV/m]	Factor [dB]	Limit [dBμV/m]	Margin [dB]	Polarity	Verdict
1	2483.5	27.81	34.37	6.56	54.00	19.63	Vertical	PASS
2	2500	27.63	34.18	6.55	54.00	19.82	Vertical	PASS
3	2483.5	35.74	42.30	6.56	74.00	31.70	Vertical	PASS
4	2500	34.03	40.58	6.55	74.00	33.42	Vertical	PASS

5.2.6. Radiated Spurious Emission (below 1GHz)

Test Requirement:	Refer to 47 CFR 15.247(d), In addition, radiated emissions which fall in the restricted bands, as defined in § 15.205(a), must also comply with the radiated emission limits specified in § 15.209(a)(see § 15.205(c)).`		
Test Limit:	Frequency (MHz)	Field strength (microvolts/meter)	Measurement distance (meters)
	0.009-0.490	2400/F(kHz)	300
	0.490-1.705	24000/F(kHz)	30
	1.705-30.0	30	30
	30-88	100 **	3
	88-216	150 **	3
	216-960	200 **	3
	Above 960	500	3
<p>** Except as provided in paragraph (g), fundamental emissions from intentional radiators operating under this section shall not be located in the frequency bands 54-72 MHz, 76-88 MHz, 174-216 MHz or 470-806 MHz. However, operation within these frequency bands is permitted under other sections of this part, e.g., §§ 15.231 and 15.241.</p> <p>In the emission table above, the tighter limit applies at the band edges.</p> <p>The emission limits shown in the above table are based on measurements employing a CISPR quasi-peak detector except for the frequency bands 9–90 kHz, 110–490 kHz and above 1000 MHz. Radiated emission limits in these three bands are based on measurements employing an average detector.</p>			
Test Method:	ANSI C63.10-2020 section 6.6.4		
Procedure:	<p>1. The EUT was setup and tested according to ANSI C63.10.</p> <p>2. The EUT is placed on a turn table which is 0.8 meter above ground for below 1 GHz, and 1.5 m for above 1 GHz. The turn table is rotated 360 degrees to determine the position of the maximum emission level.</p> <p>3. The EUT was set 3 meters from the receiving antenna, which was mounted on the top of a variable height antenna tower.</p> <p>4. For each suspected emission, the EUT was arranged to its worst case and then tune the Antenna tower (from 1 m to 4 m) and turntable (from 0 degree to 360 degrees) to find the maximum reading. A pre-amp and a high pass filter are used for the test in order to get better signal level to comply with the guidelines.</p> <p>5. Set to the maximum power setting and enable the EUT transmit continuously.</p> <p>6. Use the following spectrum analyzer settings</p> <p>a) Span shall wide enough to fully capture the emission being measured;</p> <p>b) RBW=120 kHz, VBW=300 kHz, Sweep=auto, Detector function=peak, Trace=max hold;</p> <p>If the emission level of the EUT measured by the peak detector is 3 dB lower than the applicable limit, the peak emission level will be reported. Otherwise, the emission measurement will be repeated using the quasi-peak detector and reported.</p>		

5.2.6.1. E.U.T. Operation

Operating Environment:					
Temperature:	22.6 °C	Humidity:	55.8 %	Atmospheric Pressure:	102 kPa
Pre test mode:	TM1,TM2				
Final test mode:	TM1,TM2				

5.2.6.2. Test Setup Diagram



5.2.6.3. Test Result

Pass

5.2.6.4. Test Data

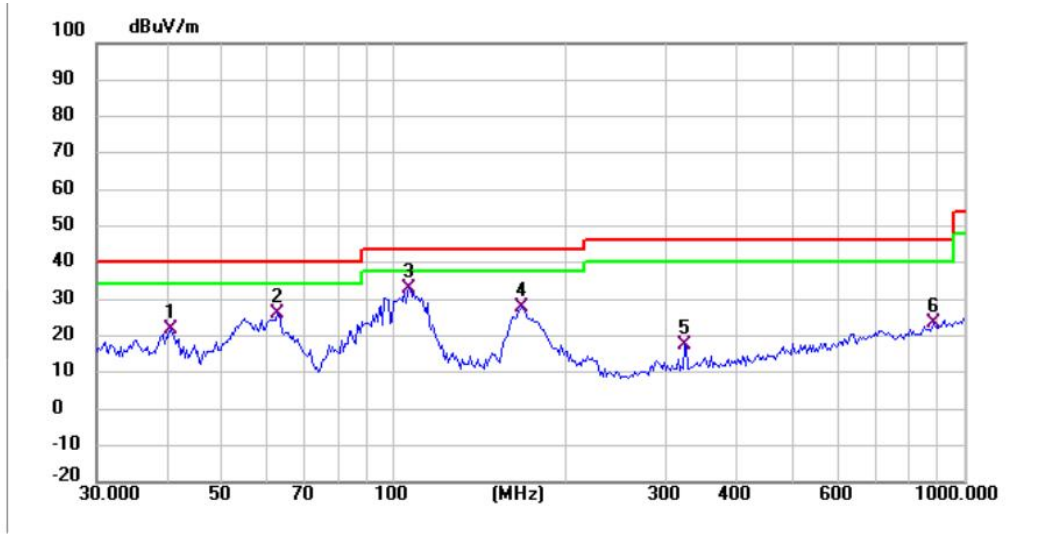
Have pre-scan all test channel, found CH00(GFSK 1M) mode which it was worst case, so only show the worst case's data on this report.

Mode1 / Polarization: Horizontal / CH: L



No.	Frequency (MHz)	Reading (dBuV)	Factor (dB/m)	Level (dBuV/m)	Limit (dBuV/m)	Margin (dB)	Detector
1	43.812	38.22	-29.67	8.55	40.00	-31.45	QP
2	61.346	42.55	-31.00	11.55	40.00	-28.45	QP
3	98.832	44.36	-31.18	13.18	43.50	-30.32	QP
4	207.850	48.27	-29.66	18.61	43.50	-24.89	QP
5	455.906	38.42	-23.12	15.30	46.00	-30.70	QP
6 *	932.271	38.65	-14.42	24.23	46.00	-21.77	QP

Mode1 / Polarization: Vertical / CH: L



No.	Frequency (MHz)	Reading (dBuV)	Factor (dB/m)	Level (dBuV/m)	Limit (dBuV/m)	Margin (dB)	Detector
1	40.559	52.34	-30.60	21.74	40.00	-18.26	QP
2	62.213	57.23	-31.17	26.06	40.00	-13.94	QP
3 *	106.013	63.69	-30.74	32.95	43.50	-10.55	QP
4	167.237	60.42	-32.56	27.86	43.50	-15.64	QP
5	323.320	44.22	-26.62	17.60	46.00	-28.40	QP
6	881.407	38.52	-15.13	23.39	46.00	-22.61	QP

Note:

1) For 9 kHz ~ 30 MHz Measurement

The EUT was pre-scanned this frequency band, found the radiated level 20dB lower than the limit, so don't show data on this report.

2) Level= Reading + Factor; Factor =Antenna Factor+ Cable Loss- Preamp Factor

3) Margin = Limit – Level

5.2.7. Radiated Spurious Emission (Above 1GHz)

Test Requirement:	In addition, radiated emissions which fall in the restricted bands, as defined in § 15.205(a), must also comply with the radiated emission limits specified in § 15.209(a)(see § 15.205(c)).`		
Test Limit:	Frequency (MHz)	Field strength (microvolts/meter)	Measurement distance (meters)
	0.009-0.490	2400/F(kHz)	300
	0.490-1.705	24000/F(kHz)	30
	1.705-30.0	30	30
	30-88	100 **	3
	88-216	150 **	3
	216-960	200 **	3
	Above 960	500	3
<p>** Except as provided in paragraph (g), fundamental emissions from intentional radiators operating under this section shall not be located in the frequency bands 54-72 MHz, 76-88 MHz, 174-216 MHz or 470-806 MHz. However, operation within these frequency bands is permitted under other sections of this part, e.g., §§ 15.231 and 15.241.</p> <p>In the emission table above, the tighter limit applies at the band edges.</p> <p>The emission limits shown in the above table are based on measurements employing a CISPR quasi-peak detector except for the frequency bands 9–90 kHz, 110–490 kHz and above 1000 MHz. Radiated emission limits in these three bands are based on measurements employing an average detector.</p>			
Test Method:	ANSI C63.10-2020 section 6.6.4		
Procedure:	<ol style="list-style-type: none"> 1. The EUT was setup and tested according to ANSI C63.10. 2. The EUT is placed on a turn table which is 0.8 meter above ground for below 1 GHz, and 1.5 m for above 1 GHz. The turn table is rotated 360 degrees to determine the position of the maximum emission level. 3. The EUT was set 3 meters from the receiving antenna, which was mounted on the top of a variable height antenna tower. 4. For each suspected emission, the EUT was arranged to its worst case and then tune the Antenna tower (from 1 m to 4 m) and turntable (from 0 degree to 360 degrees) to find the maximum reading. A pre-amp and a high pass filter are used for the test in order to get better signal level to comply with the guidelines. 5. Set to the maximum power setting and enable the EUT transmit continuously. 6. Use the following spectrum analyzer settings <ol style="list-style-type: none"> a) Span shall wide enough to fully capture the emission being measured; b) Set RBW=1MHz, VBW=3MHz for >1GHz, Sweep time=auto, Detector=peak, Trace=max hold for Peak measurement <p>For average measurement: use duty cycle correction factor method (DCCF)Averager level = Peak level + DCCF</p>		

5.2.7.1. E.U.T. Operation

Operating Environment:					
Temperature:	22.6 °C	Humidity:	55.8 %	Atmospheric Pressure:	102 kPa
Pre test mode:	TM1,TM2				
Final test mode:	TM1,TM2				

5.2.7.2. Test Setup Diagram



5.2.7.3. Test Result

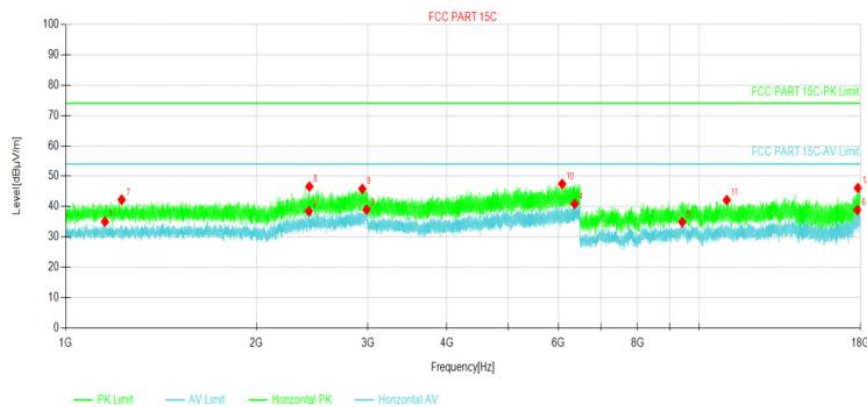
Pass

5.2.7.4. Test Data

Note:

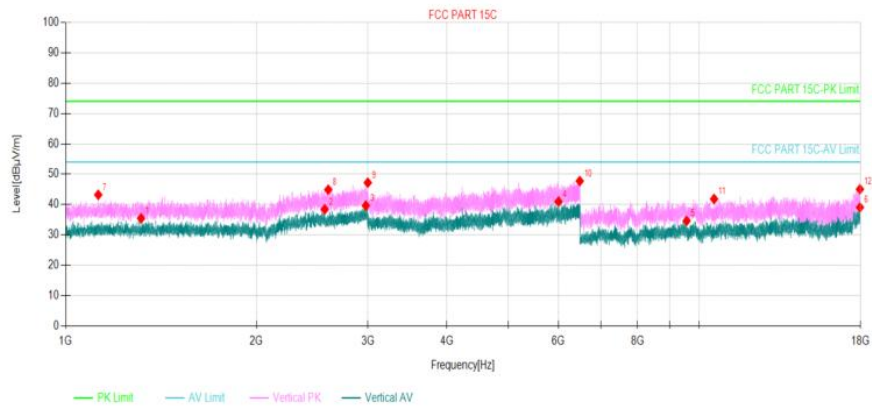
1. In order to prevent the amplifier from saturating, we add a band-stop filter that filters out the main frequency.
2. 18GHz-25GHz is the background of the site, there is no radiated spurious.
3. Have pre-scan all test mode, found GFSK 1M which it was worst case, so only show the worst case' s data on this report.

Mode1 / Polarization: Horizontal / CH: L



Suspected Data List								
NO.	Freq. [MHz]	Reading [dBμV/m]	Level [dBμV/m]	Factor [dB]	Limit [dBμV/m]	Margin [dB]	Polarity	Verdict
1	1153.4	33.54	34.99	1.45	54.00	19.01	Horizontal	PASS
2	2420.6	31.29	38.43	7.14	54.00	15.57	Horizontal	PASS
3	2985.6	29.15	39.00	9.85	54.00	15.00	Horizontal	PASS
4	6366.65	34.55	40.86	6.31	54.00	13.14	Horizontal	PASS
5	9412.95	31.82	34.88	3.06	54.00	19.12	Horizontal	PASS
6	17796.4	25.79	38.87	13.08	54.00	15.13	Horizontal	PASS
7	1225.8	40.34	42.27	1.93	74.00	31.73	Horizontal	PASS
8	2425.6	39.41	46.59	7.18	74.00	27.41	Horizontal	PASS
9	2940.6	36.35	45.82	9.47	74.00	28.18	Horizontal	PASS
10	6081.75	42.10	47.46	5.36	74.00	26.54	Horizontal	PASS
11	11065.5	37.42	42.14	4.72	74.00	31.86	Horizontal	PASS
12	17824.0	33.02	46.10	13.08	74.00	27.90	Horizontal	PASS

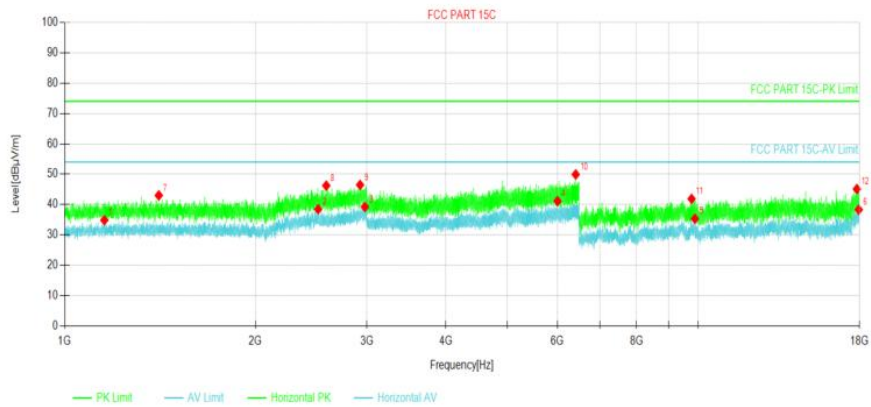
Mode1 / Polarization: Vertical / CH: L



Suspected Data List

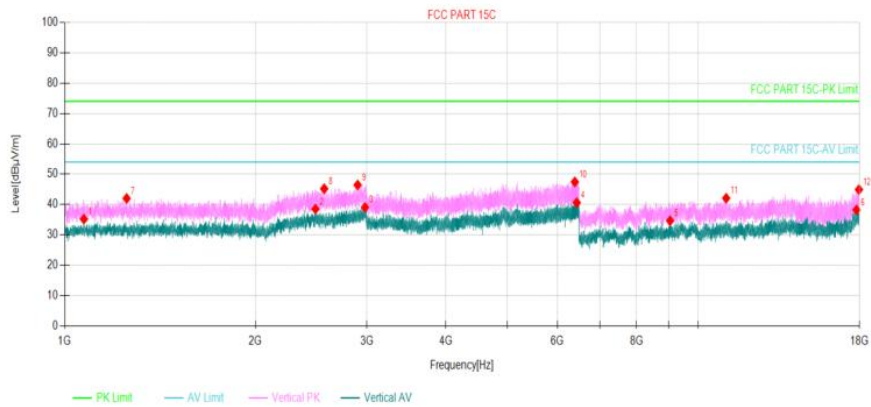
NO.	Freq. [MHz]	Reading [dBμV/m]	Level [dBμV/m]	Factor [dB]	Limit [dBμV/m]	Margin [dB]	Polarity	Verdict
1	1315.4	32.97	35.46	2.49	54.00	18.54	Vertical	PASS
2	2564.4	31.01	38.44	7.43	54.00	15.56	Vertical	PASS
3	2977.8	29.89	39.67	9.78	54.00	14.33	Vertical	PASS
4	6000.9	35.71	40.98	5.27	54.00	13.02	Vertical	PASS
5	9561.3	31.46	34.62	3.16	54.00	19.38	Vertical	PASS
6	17959.7	25.81	39.08	13.27	54.00	14.92	Vertical	PASS
7	1125.6	41.97	43.23	1.26	74.00	30.77	Vertical	PASS
8	2597.6	37.63	44.90	7.27	74.00	29.10	Vertical	PASS
9	2999.4	37.26	47.22	9.96	74.00	26.78	Vertical	PASS
10	6482.5	41.22	47.75	6.53	74.00	26.25	Vertical	PASS
11	10566.4	37.65	41.85	4.20	74.00	32.15	Vertical	PASS
12	17958.6	31.79	45.06	13.27	74.00	28.94	Vertical	PASS

Mode1 / Polarization: Horizontal / CH: M



Suspected Data List								
NO.	Freq. [MHz]	Reading [dBμV/m]	Level [dBμV/m]	Factor [dB]	Limit [dBμV/m]	Margin [dB]	Polarity	Verdict
1	1155	33.39	34.85	1.46	54.00	19.15	Horizontal	PASS
2	2513.4	30.79	38.47	7.68	54.00	15.53	Horizontal	PASS
3	2978.8	29.45	39.24	9.79	54.00	14.76	Horizontal	PASS
4	6000.9	35.86	41.13	5.27	54.00	12.87	Horizontal	PASS
5	9889.05	31.86	35.30	3.44	54.00	18.70	Horizontal	PASS
6	17947.1	25.14	38.33	13.19	54.00	15.67	Horizontal	PASS
7	1408	40.08	43.03	2.95	74.00	30.97	Horizontal	PASS
8	2588.4	38.92	46.24	7.32	74.00	27.76	Horizontal	PASS
9	2927.4	37.14	46.49	9.35	74.00	27.51	Horizontal	PASS
10	6412.15	43.40	49.93	6.53	74.00	24.07	Horizontal	PASS
11	9771.75	38.67	41.88	3.21	74.00	32.12	Horizontal	PASS
12	17824.0	32.04	45.12	13.08	74.00	28.88	Horizontal	PASS

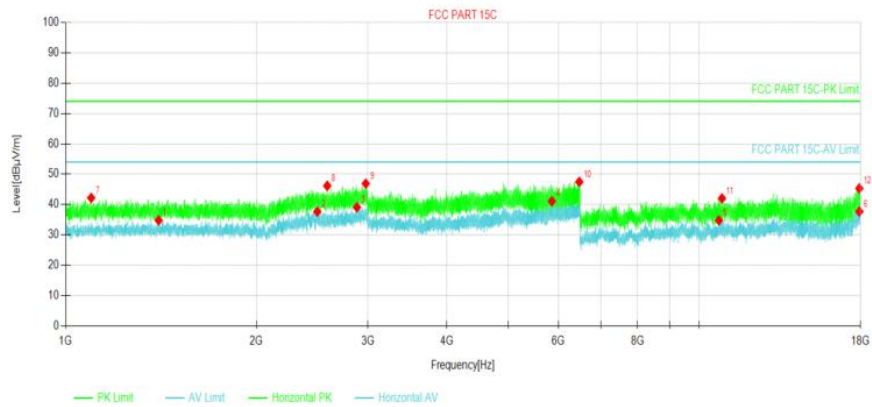
Mode1 / Polarization: Vertical / CH: M



Suspected Data List

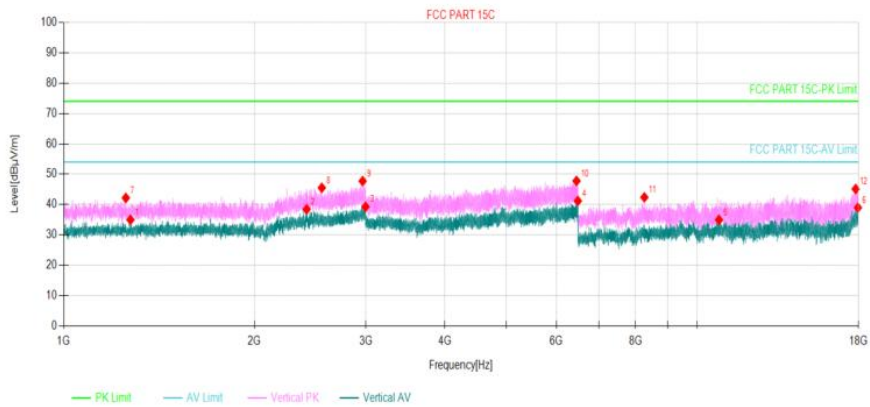
NO.	Freq. [MHz]	Reading [dBμV/m]	Level [dBμV/m]	Factor [dB]	Limit [dBμV/m]	Margin [dB]	Polarity	Verdict
1	1072.2	34.48	35.23	0.75	54.00	18.77	Vertical	PASS
2	2488.4	30.87	38.52	7.65	54.00	15.48	Vertical	PASS
3	2980.2	29.29	39.09	9.80	54.00	14.91	Vertical	PASS
4	6435.6	34.10	40.63	6.53	54.00	13.37	Vertical	PASS
5	9036.9	32.75	34.67	1.92	54.00	19.33	Vertical	PASS
6	17798.7	25.13	38.25	13.12	54.00	15.75	Vertical	PASS
7	1252.6	39.93	42.03	2.10	74.00	31.97	Vertical	PASS
8	2569.4	37.82	45.23	7.41	74.00	28.77	Vertical	PASS
9	2901.8	37.32	46.46	9.14	74.00	27.54	Vertical	PASS
10	6392.2	40.98	47.46	6.48	74.00	26.54	Vertical	PASS
11	11082.7	37.33	42.10	4.77	74.00	31.90	Vertical	PASS
12	17959.7	31.69	44.96	13.27	74.00	29.04	Vertical	PASS

Mode1 / Polarization: Horizontal / CH: H



Suspected Data List								
NO.	Freq. [MHz]	Reading [dBμV/m]	Level [dBμV/m]	Factor [dB]	Limit [dBμV/m]	Margin [dB]	Polarity	Verdict
1	1402	31.88	34.82	2.94	54.00	19.18	Horizontal	PASS
2	2496.2	29.93	37.64	7.71	54.00	16.36	Horizontal	PASS
3	2884.2	30.10	39.11	9.01	54.00	14.89	Horizontal	PASS
4	5858.1	36.36	41.10	4.74	54.00	12.90	Horizontal	PASS
5	10757.3	30.10	34.80	4.70	54.00	19.20	Horizontal	PASS
6	17924.1	24.64	37.69	13.05	54.00	16.31	Horizontal	PASS
7	1097.2	41.15	42.21	1.06	74.00	31.79	Horizontal	PASS
8	2588.8	38.87	46.18	7.31	74.00	27.82	Horizontal	PASS
9	2978	37.12	46.90	9.78	74.00	27.10	Horizontal	PASS
10	6471.3	40.94	47.47	6.53	74.00	26.53	Horizontal	PASS
11	10872.3	37.22	42.02	4.80	74.00	31.98	Horizontal	PASS
12	17918.3	32.32	45.33	13.01	74.00	28.67	Horizontal	PASS

Mode1 / Polarization: Vertical / CH: H



Suspected Data List								
NO.	Freq. [MHz]	Reading [dBuV/m]	Level [dBuV/m]	Factor [dB]	Limit [dBuV/m]	Margin [dB]	Polarity	Verdict
1	1274.8	32.74	34.98	2.24	54.00	19.02	Vertical	PASS
2	2419.2	31.32	38.45	7.13	54.00	15.55	Vertical	PASS
3	2996.8	29.35	39.29	9.94	54.00	14.71	Vertical	PASS
4	6486	34.69	41.22	6.53	54.00	12.78	Vertical	PASS
5	10835.5	30.14	34.98	4.84	54.00	19.02	Vertical	PASS
6	17956.3	25.73	38.98	13.25	54.00	15.02	Vertical	PASS
7	1253.6	40.09	42.20	2.11	74.00	31.80	Vertical	PASS
8	2556.2	38.06	45.53	7.47	74.00	28.47	Vertical	PASS
9	2965.6	38.06	47.74	9.68	74.00	26.26	Vertical	PASS
10	6454.15	41.26	47.79	6.53	74.00	26.21	Vertical	PASS
11	8260.65	41.38	42.39	1.01	74.00	31.61	Vertical	PASS
12	17812.5	32.03	45.13	13.10	74.00	28.87	Vertical	PASS

Note:

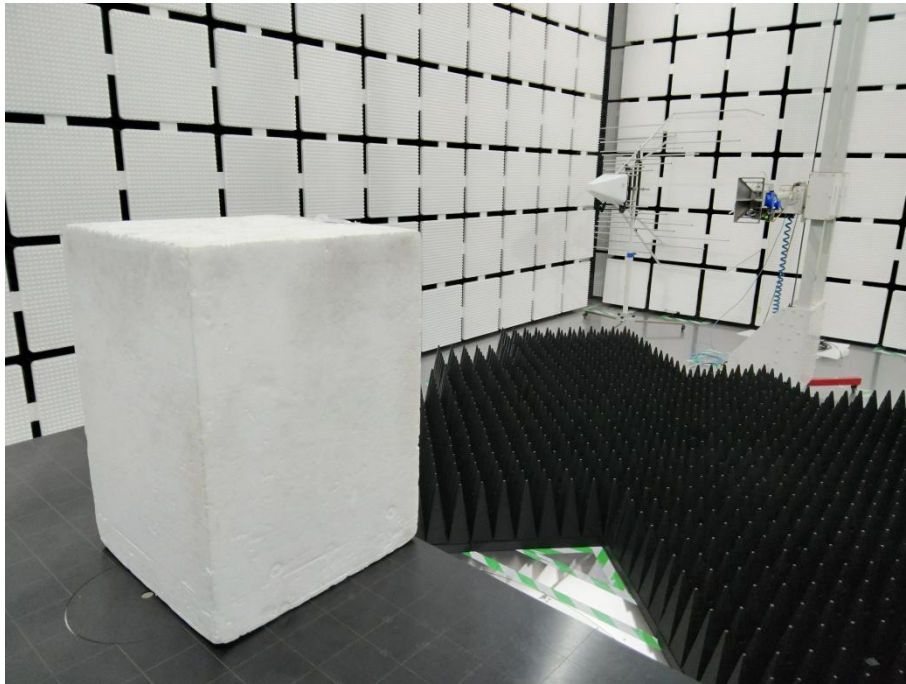
1) Level= Reading + Factor; Factor =Antenna Factor+ Cable Loss- Preamp Factor

2) Margin = Limit – Level

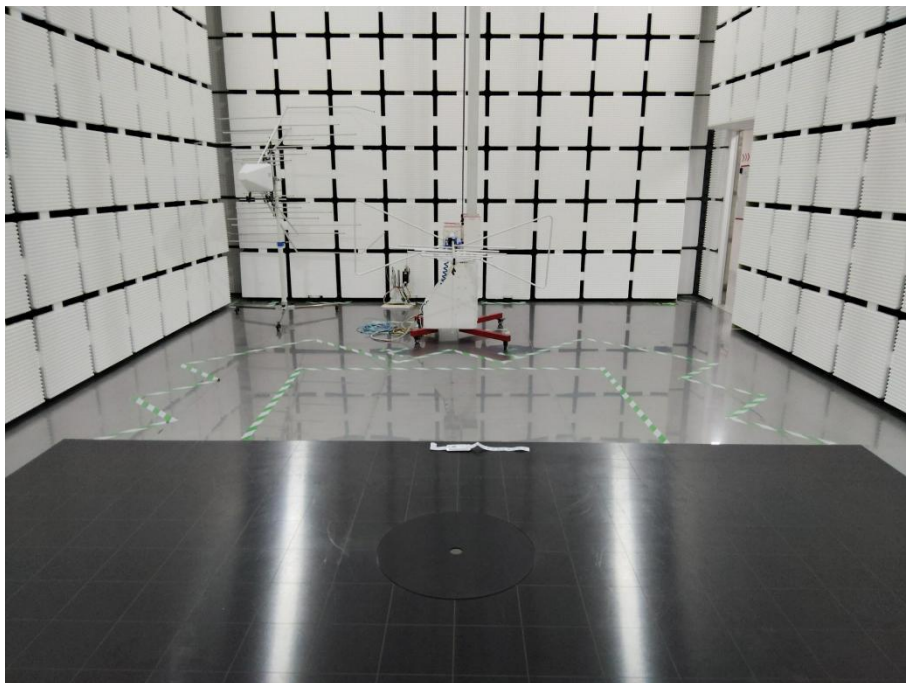
3) Average measurement was not performed if peak level is lower than average limit (54dBuV/m) for above 1GHz.

6. TEST SETUP PHOTOS

Radiated band edge emission
Radiated Spurious Emission (Above 1GHz)

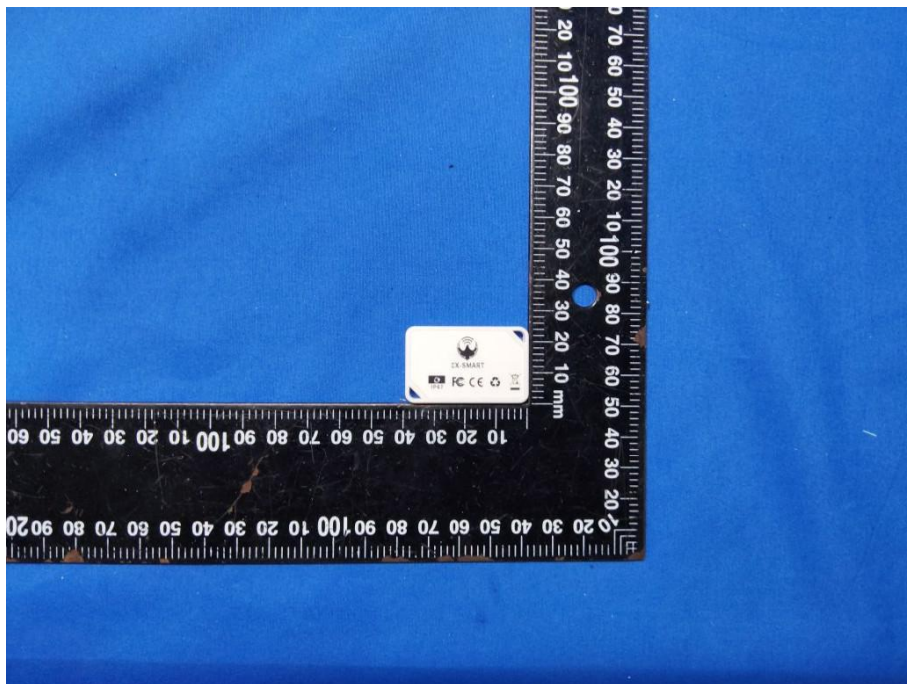
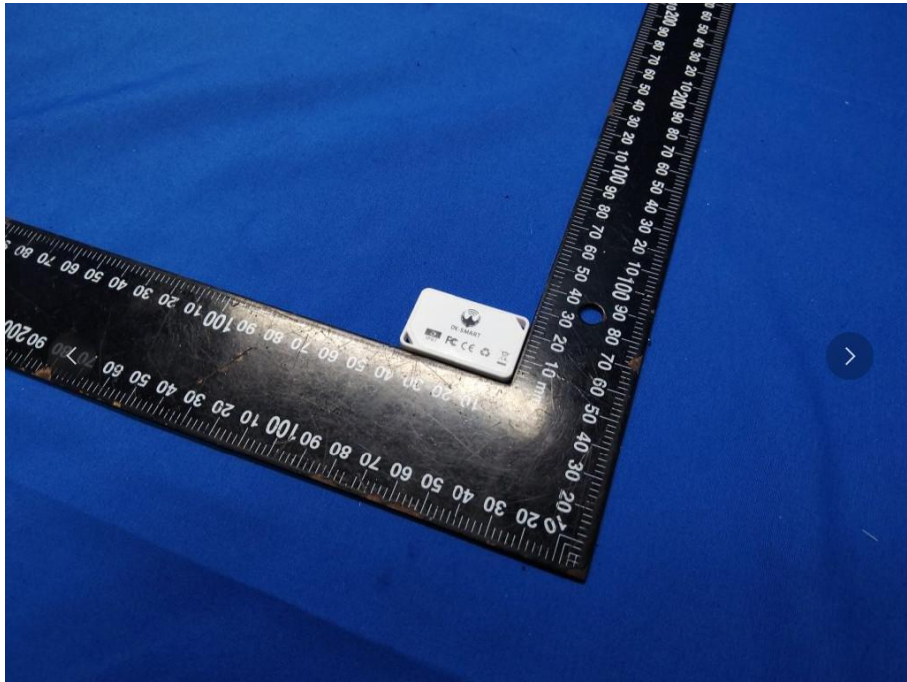


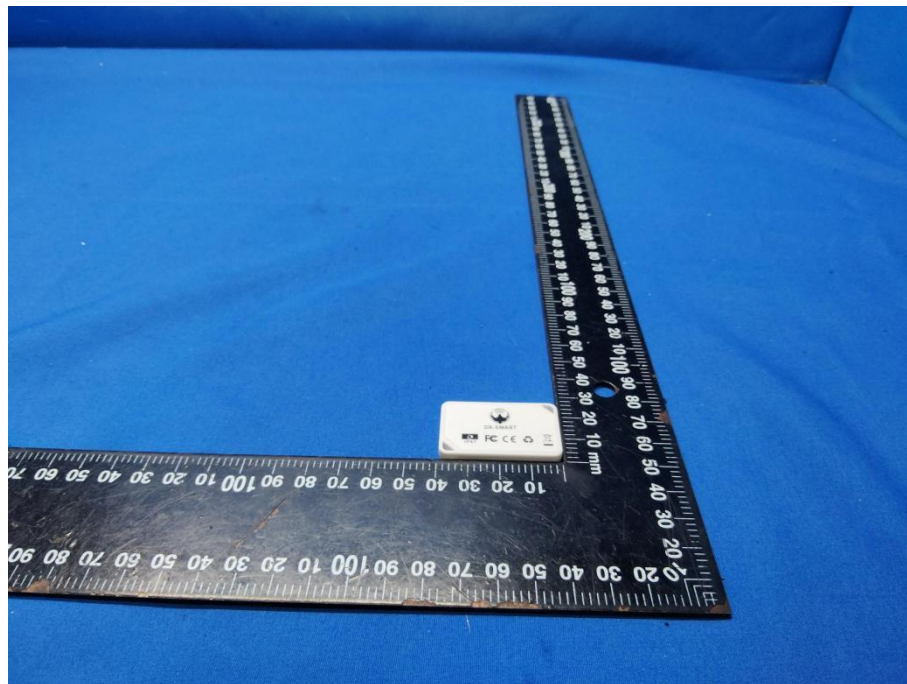
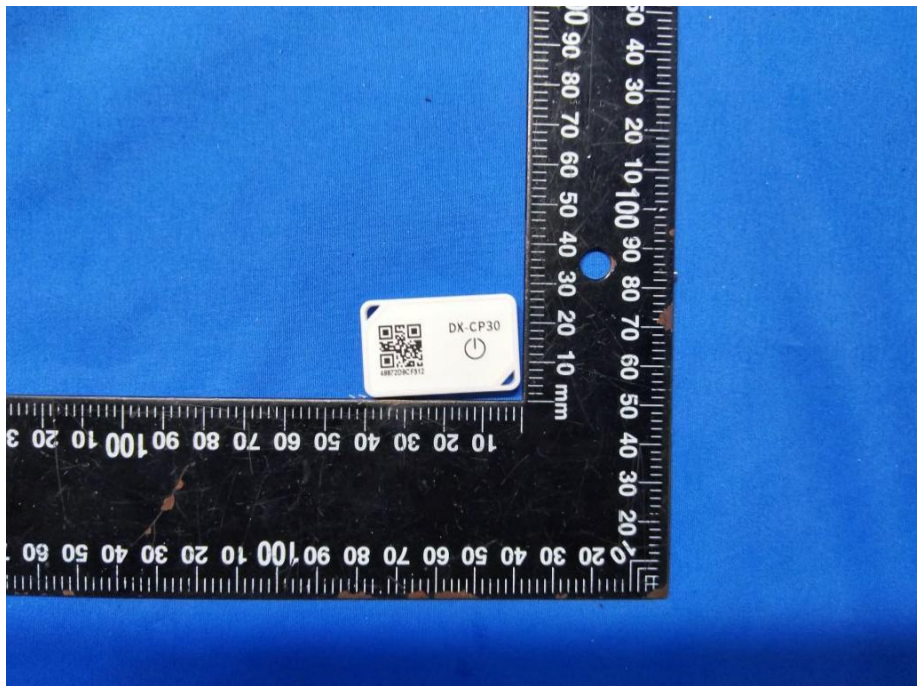
Radiated Spurious Emission (below 1GHz)

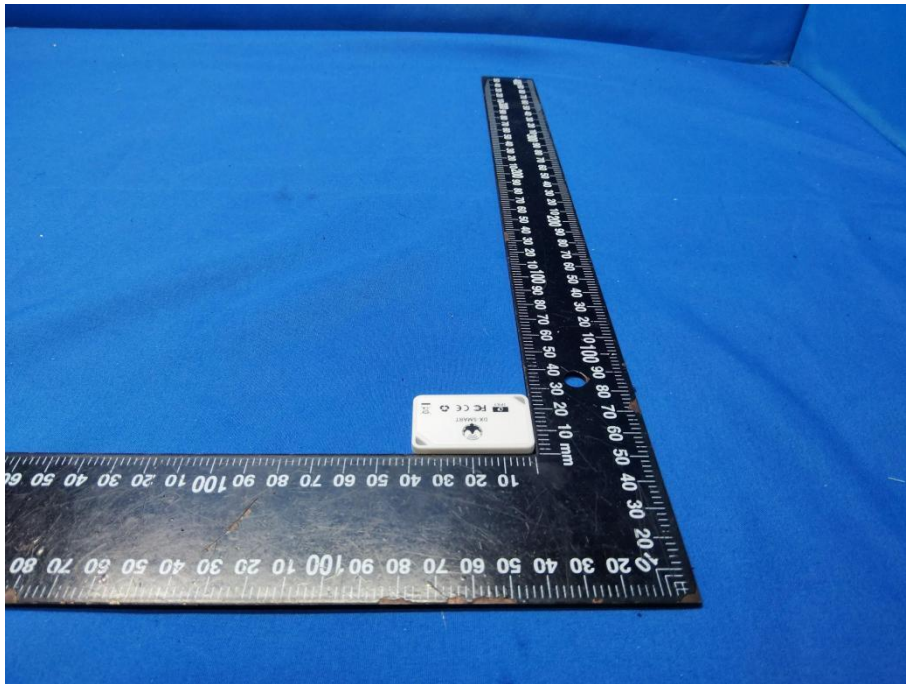


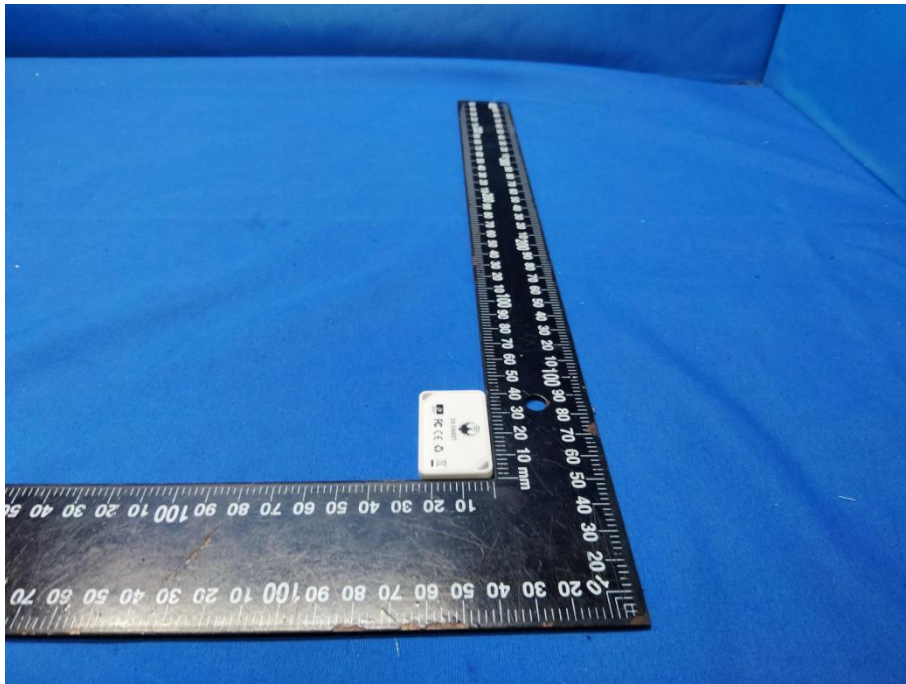
7. EXTERNAL AND INTERNAL PHOTOS

7.1. External Photos

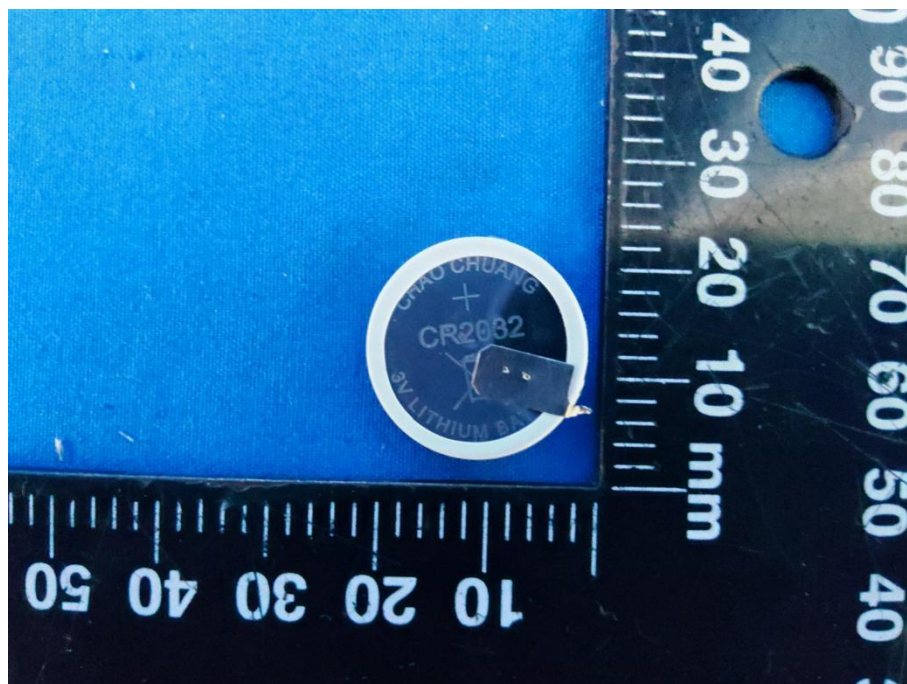
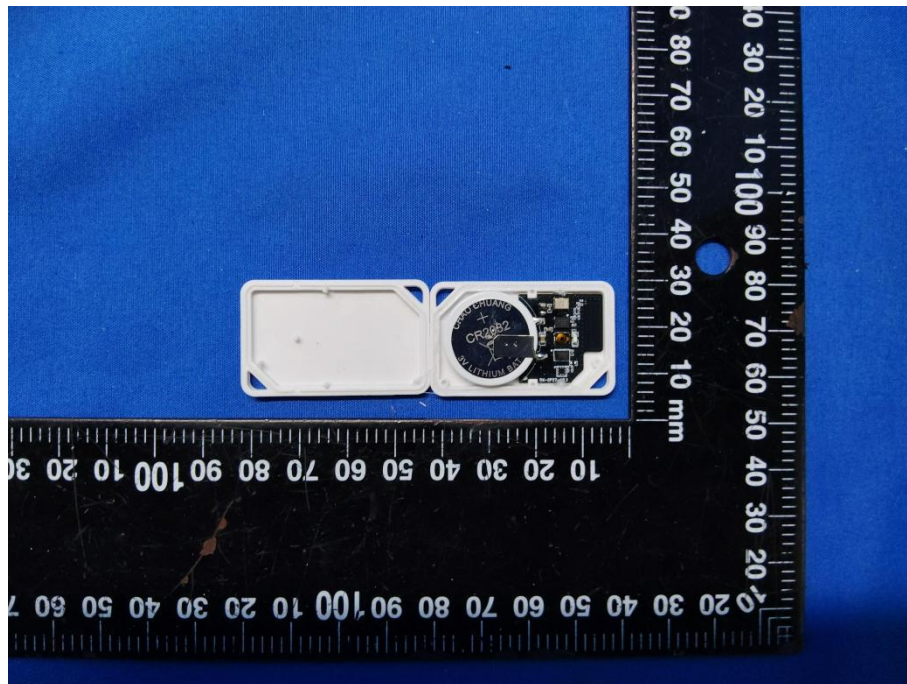


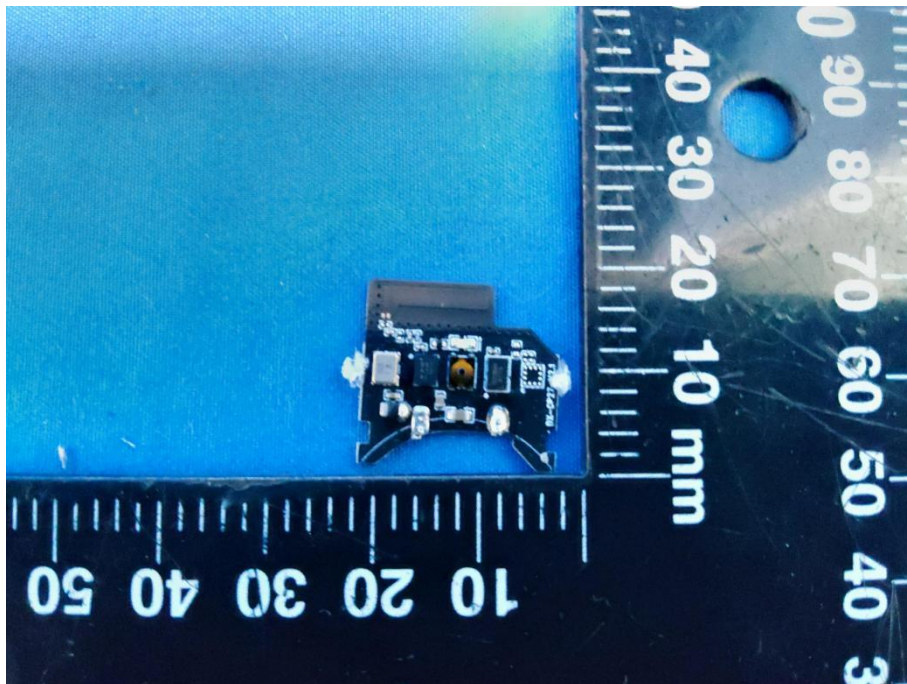
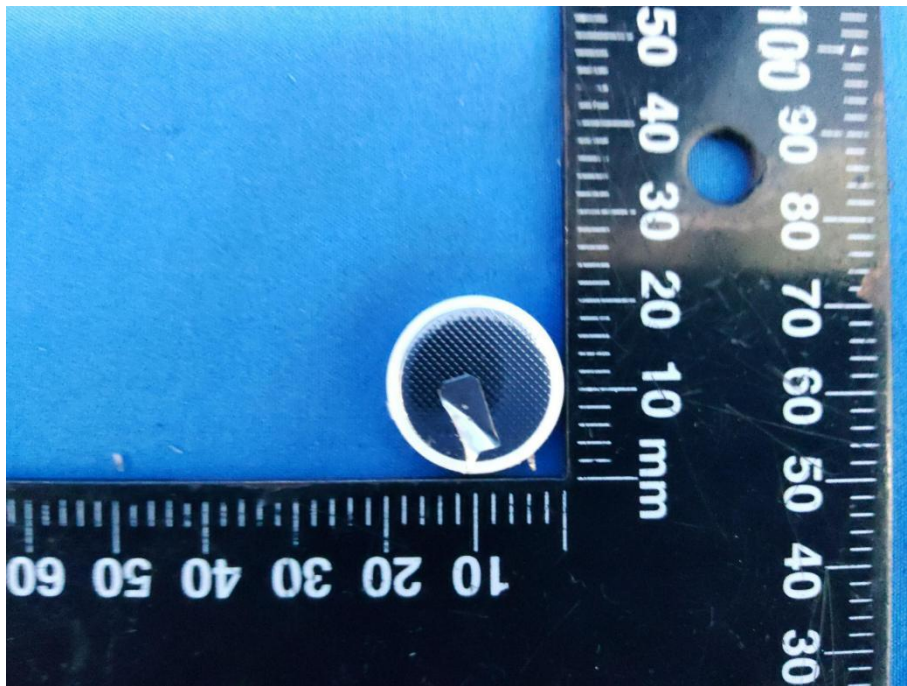


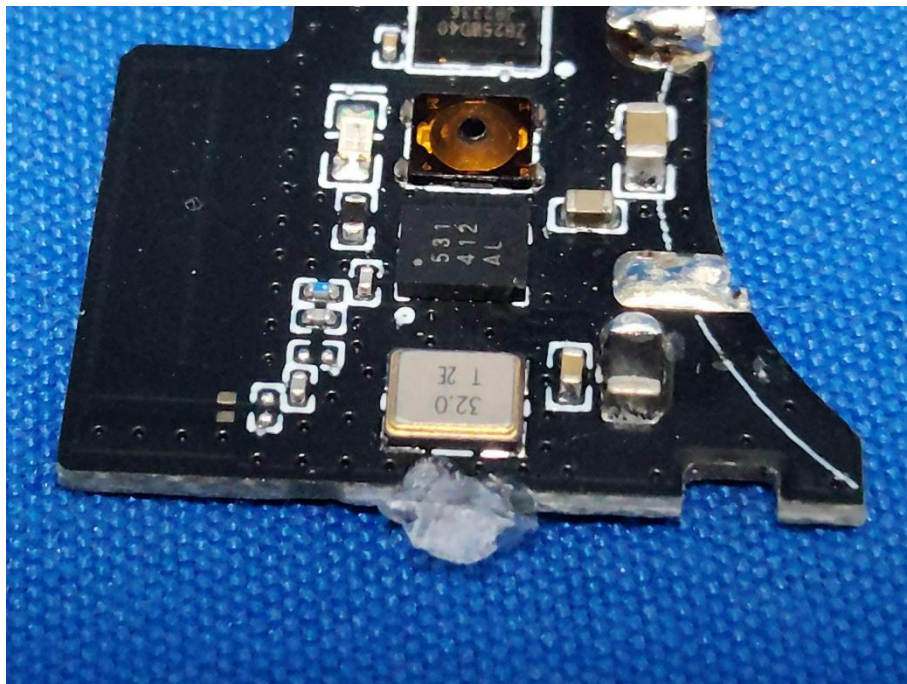
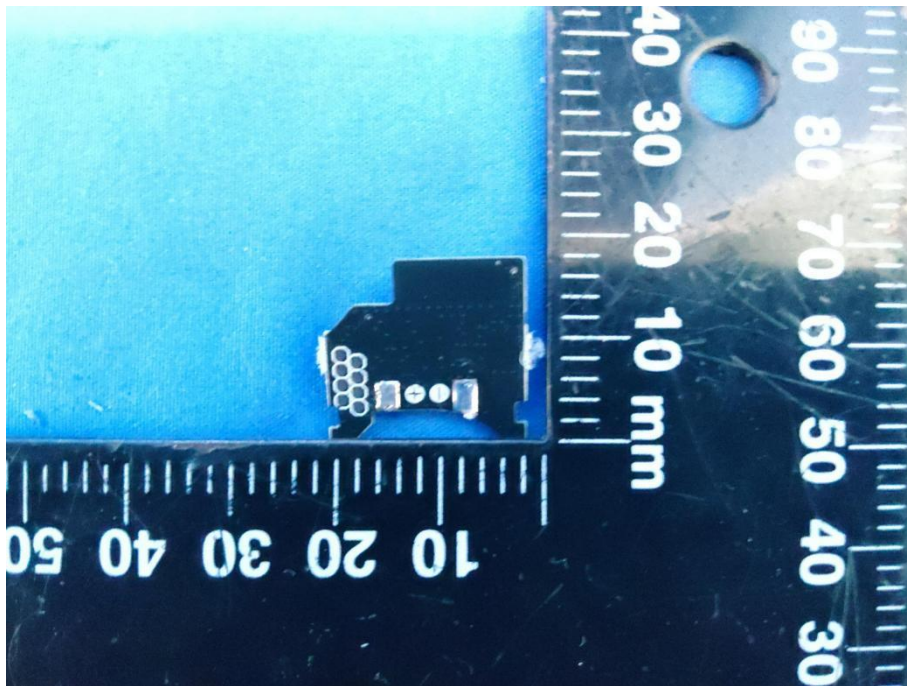


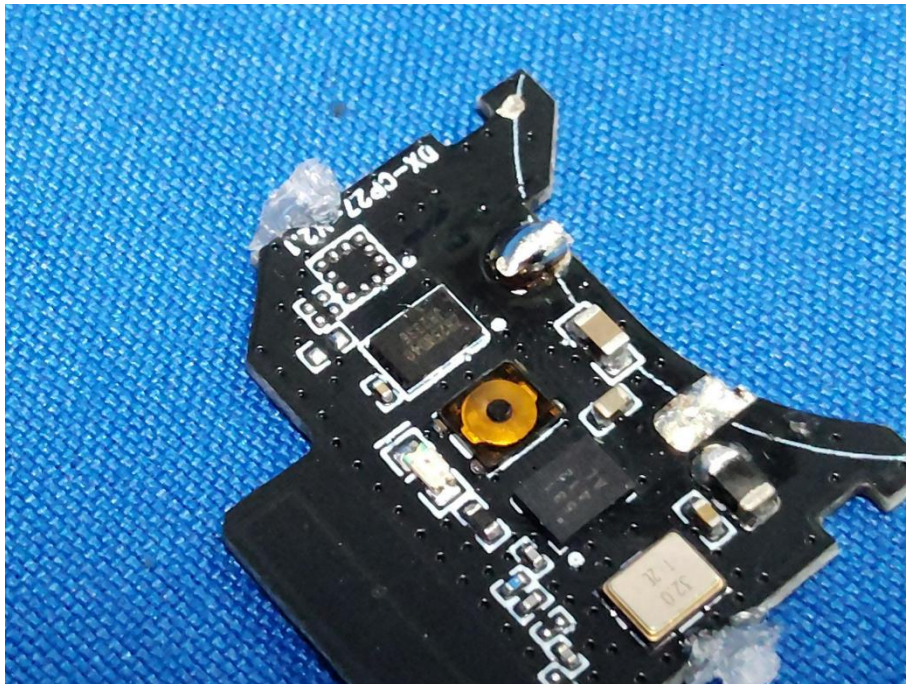
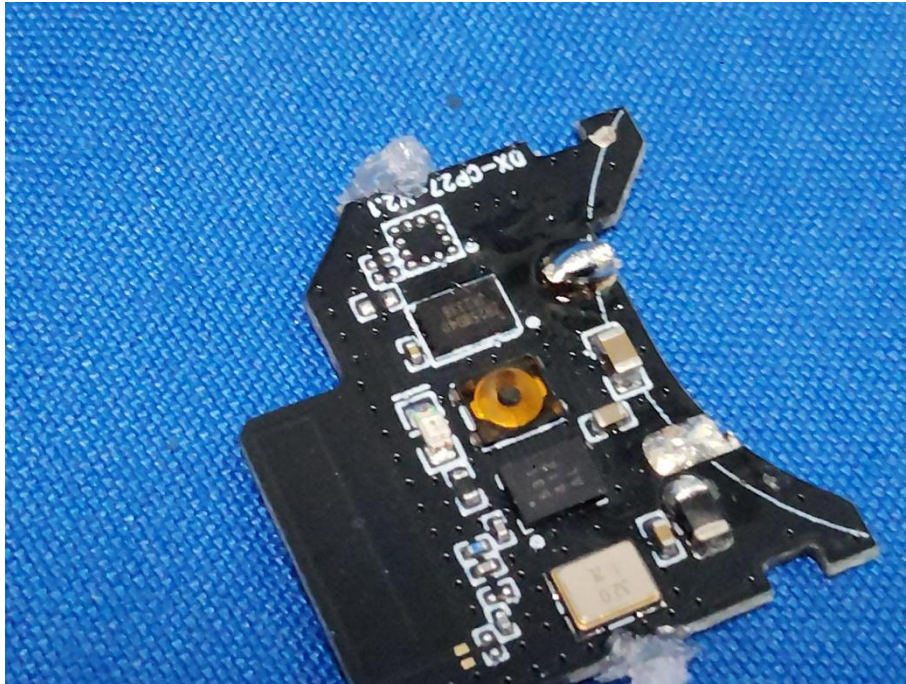


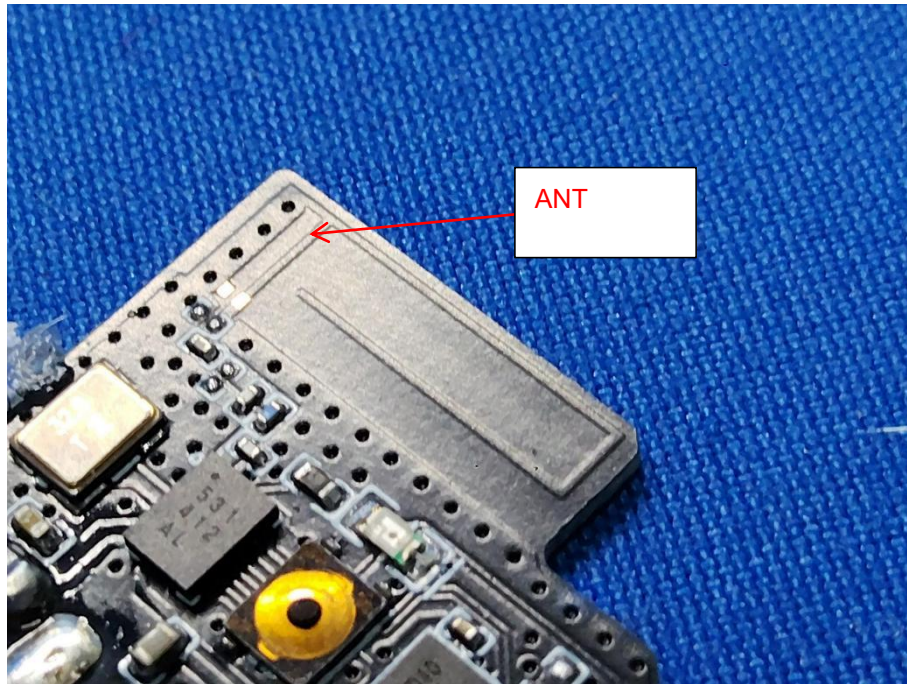
7.2. Internal Photos











8. Appendix Report