

# YUC100-U2W operating guide

Please read this guide carefully before using the product and keep it safe

## Product Function Introduction

By connecting to your car's USB port, your factory wired CarPlay can be upgraded to wireless CarPlay, and it can be automatically connected when you get in the car. Let users say goodbye to the shackles of data cable.

## Connection Diagram

Supports both wired/wireless connections



## Product Specifications

- Power input: DC5V 1A
- Power output: DC5V 0.5A
- Power consumption: 1.5W
- Compatible resolution: adaptive

## Supported Vehicles & Mobile Phones

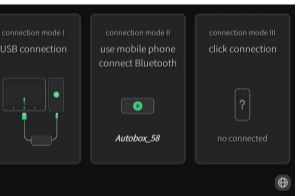
- iPhone: iPhone 6 and above, iOS 10 and above version
- Supported car models: Car with factory wired CarPlay  
Specific model query:  
<https://www.apple.com.cn/ios/carplay/available-models>

## LED Light Description

- Red status: Power indicator
- Green/Blue: Successfully connected
- Red-green/red-blue flashing: Software update in progress

## Wireless CarPlay Connection Steps

1. Insert the adapter into the car's USB port
2. Turn on the WiFi and Bluetooth of the iPhone
3. Enter the Bluetooth interface of the iPhone and search for the Bluetooth name displayed on the car screen
4. Click to connect

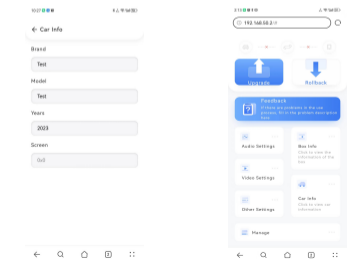


## List Management

- If you have a history of connecting to wireless CarPlay, the adapter will automatically connect your iPhone the next time you are near your car.

## Update Version Online/Feedback Problem

- Steps to enter the background  
Insert the adapter into the car's USB port  
iPhone connects to the adapter's WiFi (password: 12345678) or Wireless CarPlay  
Enter 192.168.50.2 in iPhone browser: Safari  
Enter your car's brand+model+year (Picture 1)
- Click "Check Update"  
You can check whether it is the latest version  
You can upgrade and update the latest version online
- Click "Feedback" (Picture 2)  
Provide a detailed description of the issues encountered during use so that engineers can find the appropriate solution for you.  
Send the screenshot of the contents to customer service personnel then click "Submit"



## Detailed FAQ

- Q: What should I do if there is no response when I plug in the product?  
A: 1. Pull out the product, at first check the original car's wired Apple CarPlay can be used normally;  
2. Click Settings on your original car system - Click "restore factory settings" or clear record of CarPlay connected list ;  
3. Plug the cable of product into the USB port of the car (the same port that used to connect the CarPlay with a data cable);  
4. Connect the Type-C end of the cable to the product and wait for a while (the first identification may be slower);

- Q: Can't connect automatically.  
A: 1. Please turn on your phone's Bluetooth and WLAN, and make sure both Bluetooth and WLAN do not connect to other devices. Neglect the original car Bluetooth;  
2. (1) Connect the adapter's CarPlay or WiFi signal with your phone (password: 12345678);  
(2) Open the iPhone browser: Safari and enter the URL :192.168.50.2;  
(3) Turn on the "Auto Connect".  
(4) If your iPhone is not scanned after a period of time (about

5min), the system will disable the automatic connection feature, at which point you will need to manually initiate the connection.

- Q: When stuck in the connection state, and it keeps connecting, what should I do?  
A (1) Connect the adapter's CarPlay or WiFi signal with your phone (password: 12345678);  
(2) Open the iPhone browser: Safari and enter the URL :192.168.50.2;  
(3) Clear connection history for adapter and iPhone, or reset the adapter;

- Q: My iPhone can identify the product Bluetooth/WiFi, but my car does not enter the connection page.  
A: 1. Reset the box;  
2. Restore the factory settings of your original car system;  
3. Replace a data cable for connection.

- Q: What should I do if I can't hear others on the phone?  
A: Please select CarPlay from Audio in your phone call interface.

## FCC Warning

This device complies with part 15 of the FCC Rules. Operation is subject to the following two conditions:  
(1) This device may not cause harmful interference, and  
(2) this device must accept any interference received, including interference that may cause undesired operation. Any Changes or modifications not expressly approved by the party responsible for compliance could void the user's authority to operate the equipment. This equipment has been tested and found to comply with the limits for a Class B digital device, pursuant to part 15 of the FCC Rules. These limits are designed to provide reasonable protection against harmful interference in a residential installation. This equipment generates uses and can radiate radio frequency energy and, if not installed and used in accordance with the instructions, may cause harmful interference to radio communications. However, there is no guarantee that interference will not occur in a particular installation. If this equipment does cause harmful interference to radio or television reception, which can be determined by turning the equipment off and on, the user is encouraged to try to correct the interference by one or more of the following measures:

- Reorient or relocate the receiving antenna.
- Increase the separation between the equipment and receiver.

- Connect the equipment into an outlet on a circuit different from that to which the receiver is connected.
- Consult the dealer or an experienced radio/TV technician for help.

FCC RF exposure statement:  
The equipment complies with FCC radiation exposure limits set forth for an uncontrolled environment. This equipment should be installed and operated with minimum distance between 20cm the radiator your body.

## Detailed FAQ

Dear user, thank you for using this product. In order to protect your rights and interests, we will provide you with high-quality after-sales service. You can enjoy one-year warranty service from the date of purchase (under normal use, the product itself is a failure caused by quality problems). Please keep this card properly, as the necessary proof of warranty service, the company reserves the right to interpret the after-sales service of this product.

## Warranty Card

|                         |  |
|-------------------------|--|
| Name                    |  |
| Purchase date           |  |
| E-Mail                  |  |
| Phone number            |  |
| Address                 |  |
| Dealer's name (stamped) |  |
| Warranty content        |  |

