

DINOSAUR WALKIE-TALKIE

恐龙对讲机

Making manual
制作说明书

This product needs to be used under the guidance of a teacher or adult! It contains small parts, not suitable for children under 3 years old, and all parts cannot be placed in the mouth
本产品需在老师或者成人的指导下使用! 内含小零件, 不适合3岁以下儿童使用, 所有零件不能入口!

Tools Required: **Screwdriver**
所需工具: 螺丝刀

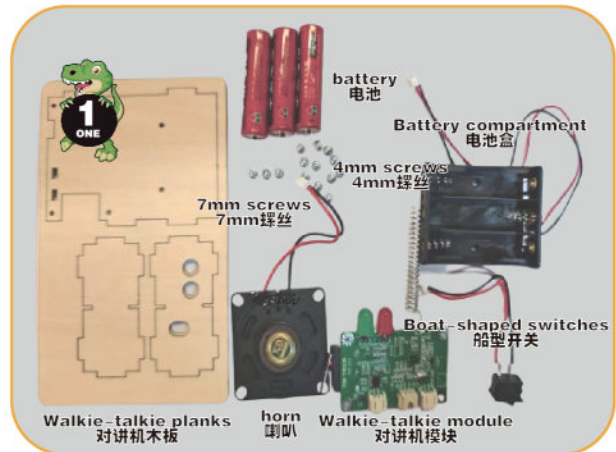
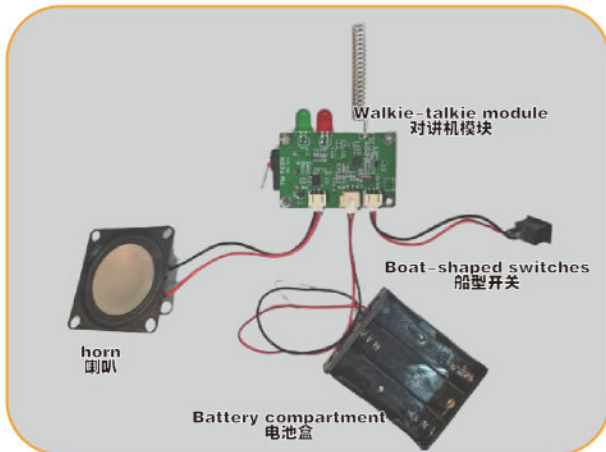


Product Introduction 产品简介

The walkie-talkie is composed of an intercom module, an external antenna, a microphone switch, and a speaker. The walkie-talkie has the advantages of integrated half-duplex FM transceiver, automatic noise reduction, ultra-small size, etc., and is a complete high-performance toy walkie-talkie.

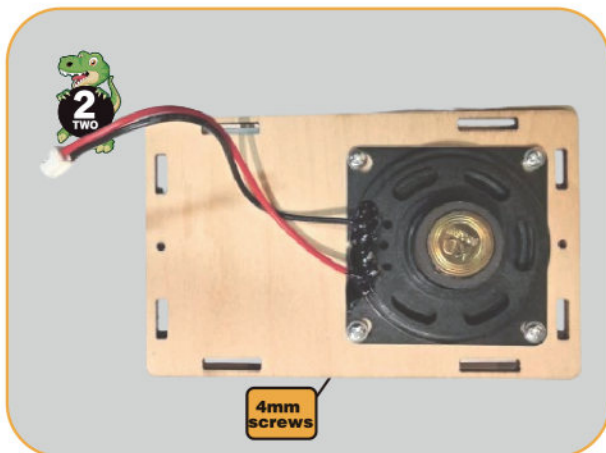
该对讲机由对讲模块、外接天线、麦克风开关喇叭组成。该对讲机具有余集成半双工调频收发, 自动降噪, 超小尺寸等优点, 是一款完整的高性能玩具对讲机。

Steps: 制作步骤

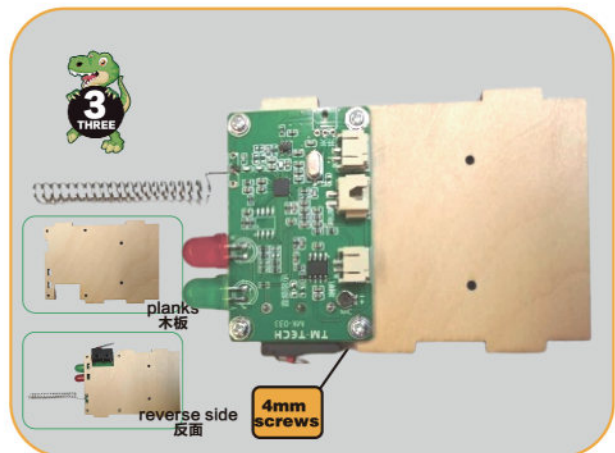


Wiring diagram (wiring diagram only, please install from the beginning of the step)
接线示意图 (仅为接线示意图, 请从步骤一开始安装)

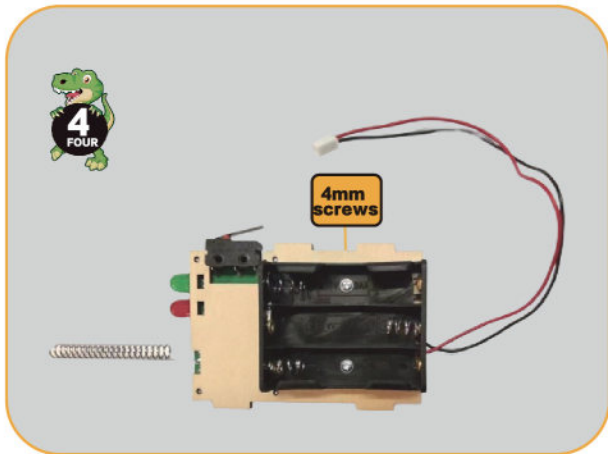
1. Recognize the parts. (Bring your own battery, pay attention to distinguish each part model)
1. 认识零件。(自备电池, 注意区分各零件型号)



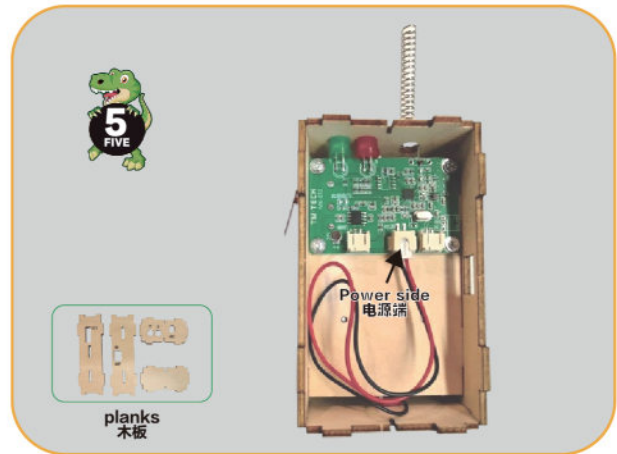
2. Fix the horn with 4mm screws
2. 用4mm螺丝固定喇叭



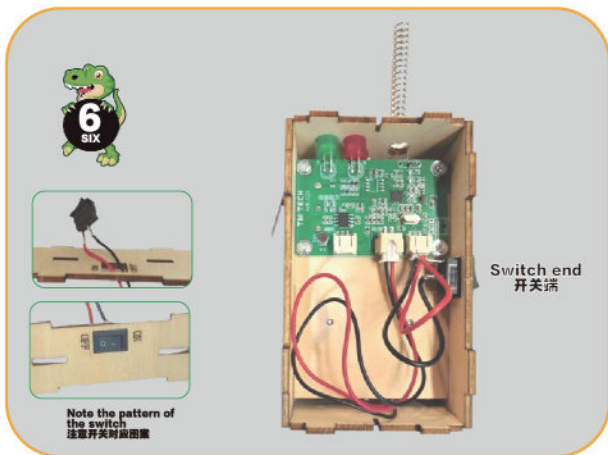
3. Fix the voice intercom module on the wooden board with 4mm screws (pay attention to distinguish the direction of the wooden board)
3. 用4mm螺丝将语音对讲模块固定在木板上 (注意区分木板方向)



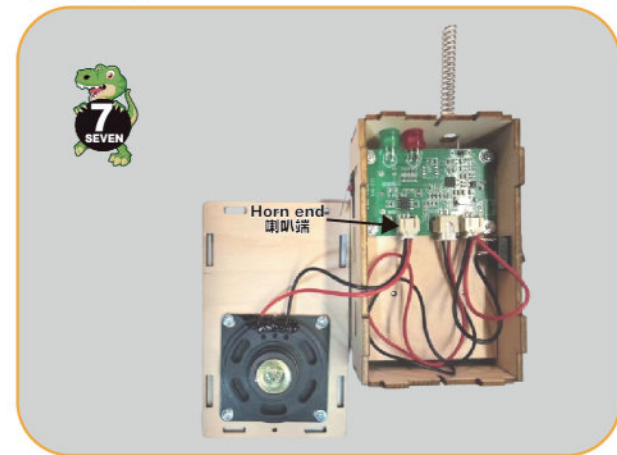
4. Fix the battery box on the back of the voice intercom module with 4mm screws (the conductive end of the battery box is facing down)
4.用4mm螺丝将电池盒固定在语音对讲模块背面(电池盒导电端朝下)



5. Assemble the wooden board, connect the battery box wire, (the wire is placed on the inside of the wooden board), and then plug it into the power terminal
5.拼装木板,连接电池盒导线,(导线放在木板内侧),再插入电源端



6. Pass the line of the boat-shaped switch through the switch hole, connect it to the switch end of the voice intercom module, and then press the switch into the wooden board.
6.将船型开关的线从开关孔穿过,接在语音对讲模块开关端,再将开关按入木板内。



7. Insert the speaker cable into the speaker end of the voice intercom module.
7.将喇叭线插入语音对讲模块喇叭端。



8. Buckle the front and back panels and fix them with 7mm screws.
8.扣上前、后面板,用7mm螺丝固定。



9. After the assembly is completed, refer to the above steps to assemble another walkie-talkie. (Turn on the power switch, press and hold the intercom button, you can talk, effective intercom distance: 50-100 meters, open areas up to 200 meters)
9.组装完成,参照以上步骤,组装另外一个对讲机。(打开电源开关,长按对讲按钮,即可对话,有效对讲距离:50-100米,空旷地段可达200米)

FCC Caution:

This device complies with part 15 of the FCC Rules. Operation is subject to the following two conditions: (1) This device may not cause harmful interference, and (2) this device must accept any interference received, including interference that may cause undesired operation.

Any changes or modifications not expressly approved by the party responsible for compliance could void the user's authority to operate the equipment.

NOTE: This equipment has been tested and found to comply with the limits for a Class B digital device, pursuant to Part 15 of the FCC Rules. These limits are designed to provide reasonable protection against harmful interference in a residential installation. This equipment generates, uses and can radiate radio frequency energy and, if not installed and used in accordance with the instructions, may cause harmful interference to radio communications. However, there is no guarantee that interference will not occur in a particular installation.

If this equipment does cause harmful interference to radio or television reception, which can be determined by turning the equipment off and on, the user is encouraged to try to correct the interference by one or more of the following measures:

- Reorient or relocate the receiving antenna.
- Increase the separation between the equipment and receiver.
- Connect the equipment into an outlet on a circuit different from that to which the receiver is connected.
- Consult the dealer or an experienced radio/TV technician for help.

The device has been evaluated to meet general RF exposure requirement. The device can be used in portable exposure condition without restriction.

Specific Absorption Rate (SAR) information:

This device meets the government's requirements for exposure to radio waves. The guidelines are based on standards that were developed by independent scientific organizations through periodic and thorough evaluation of scientific studies. The standards include a substantial safety margin designed to assure the safety of all persons regardless of age or health. FCC RF Exposure Information and Statement the SAR limit of USA (FCC) is 1.6 W/kg averaged over one gram of tissue. Device types: This device has also been tested against this SAR limit.

The use of belt clips, holsters and similar accessories should not contain metallic components in its assembly.

The use of accessories that do not satisfy these requirements may not comply with FCC RF exposure requirements, and should be avoided.

· DO NOT operate the radio without a proper antenna attached, as this may damage the radio and may also cause you to exceed RF exposure limits. A proper antenna is the antenna supplied with this radio by the manufacturer or an antenna specifically authorized by the manufacturer for use with this radio, and the antenna gain shall not exceed the specified gain by the manufacturer declared.

- DO NOT transmit for more than 50% of total radio use time, more than 50% of the time can cause RF exposure compliance requirements to be exceeded.
- During transmissions, your radio generates RF energy that can possibly cause interference with other devices or systems. To avoid such interference, turn off the radio in areas where signs are posted to do so.
- DO NOT operate the transmitter in areas that are sensitive to electromagnetic radiation such as hospitals, aircraft, and blasting sites.
- Portable Device, this transmitter may operate with the antenna(s) documented in this filing in Push-to-Talk and body-worn configurations. RF exposure compliance is limited to the specific belt-clip and accessory configurations as documented in this filing and the separation distance between user and the device or its antenna shall be at least 2.5 cm.

General population/uncontrolled Radio, this radio is designed for and classified as "General population/uncontrolled Use".