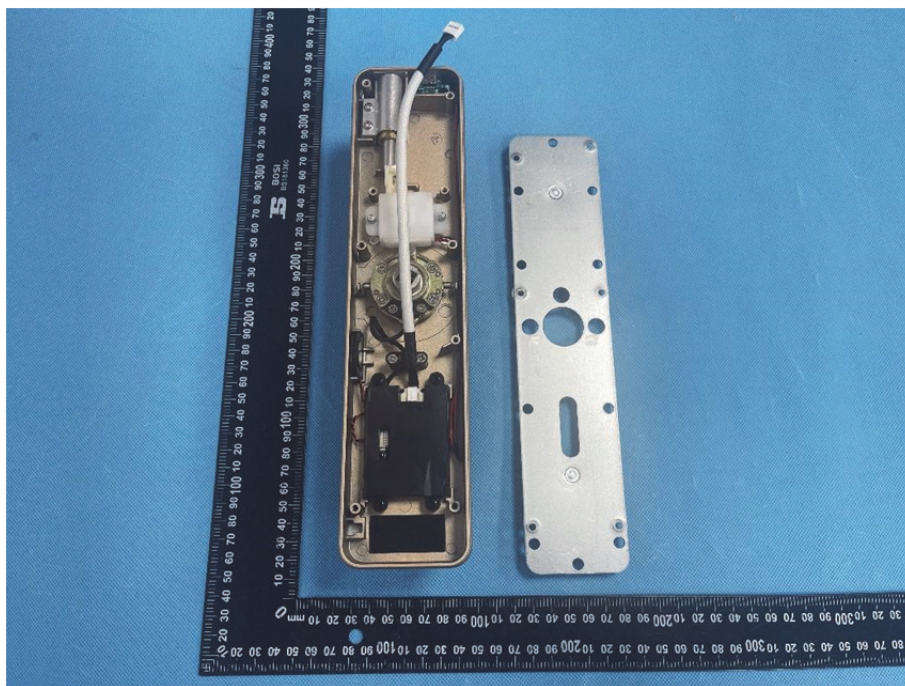
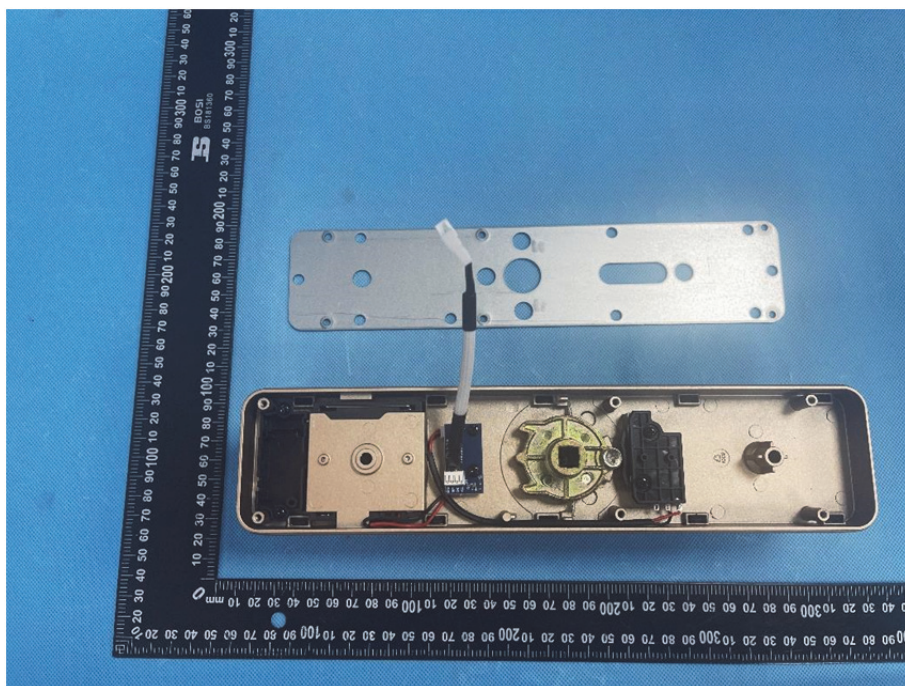


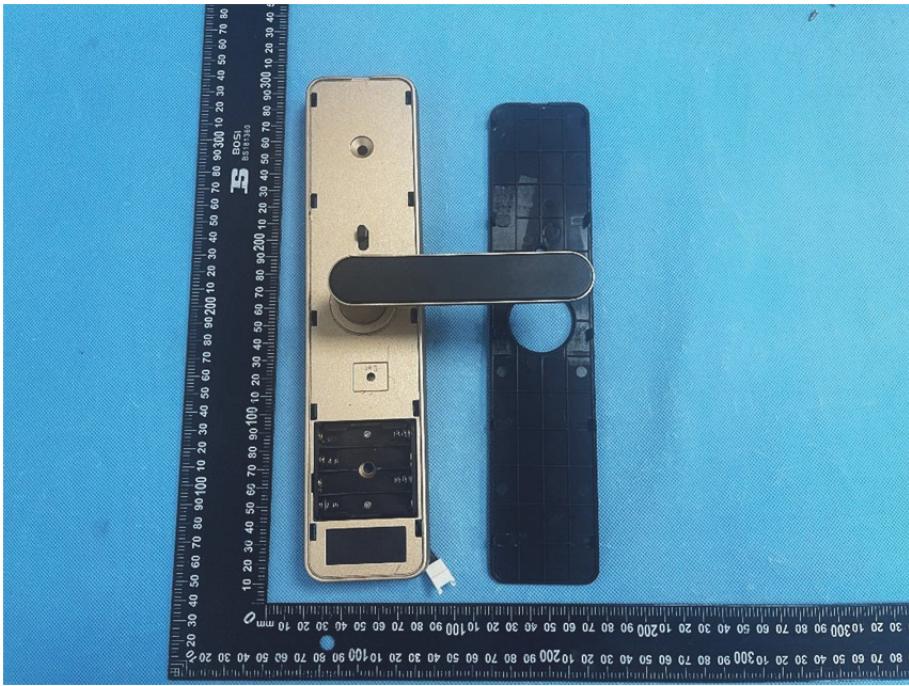
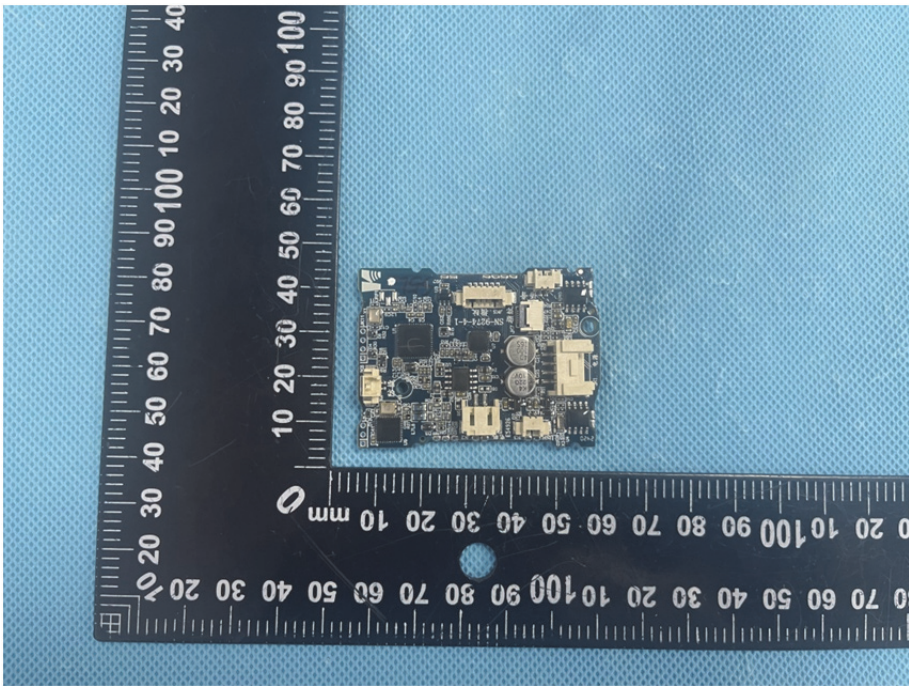
### EXHIBIT 3 - EUT INTERNAL PHOTOGRAPHS

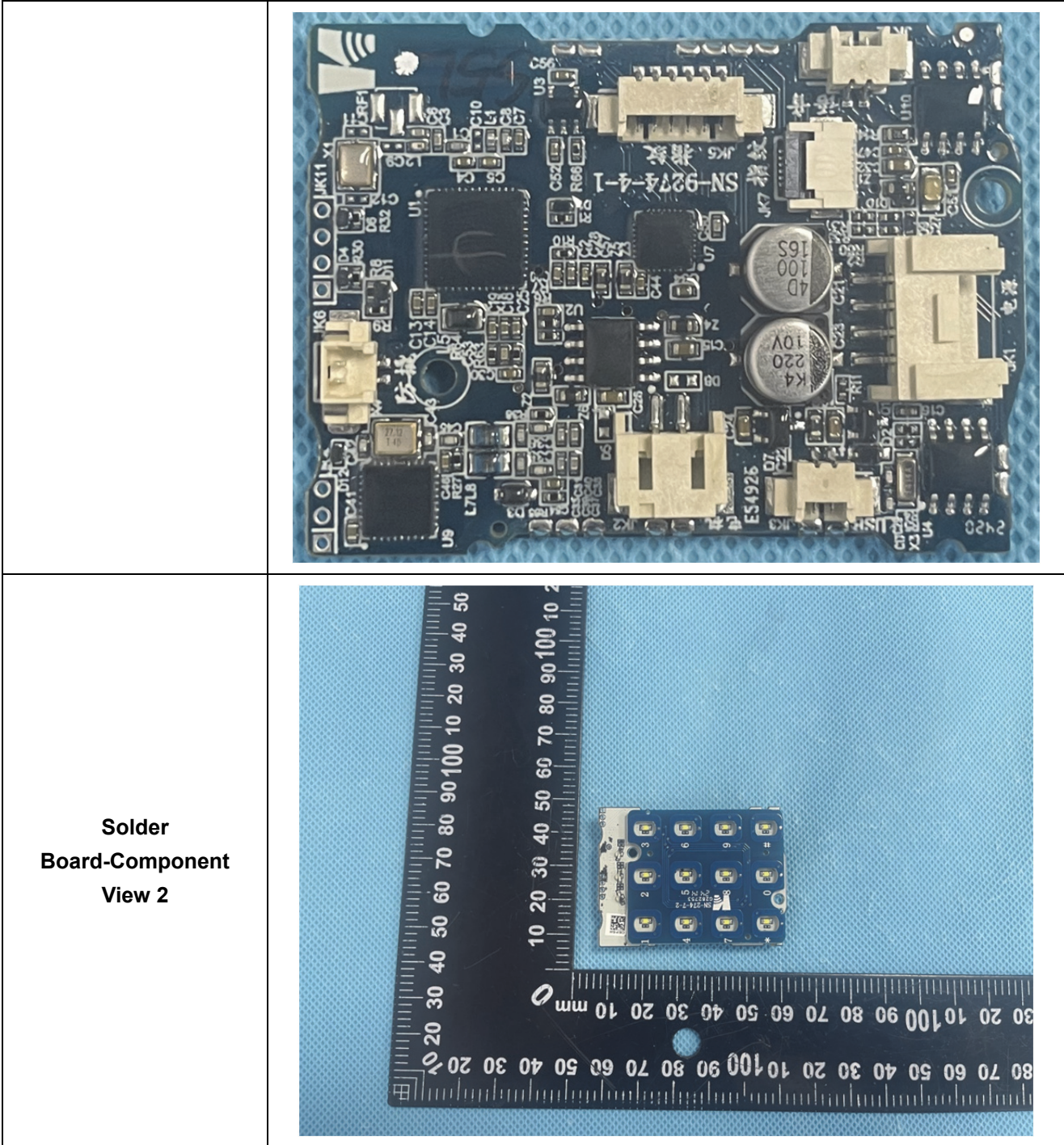
**EUT Housing and Board View 1**

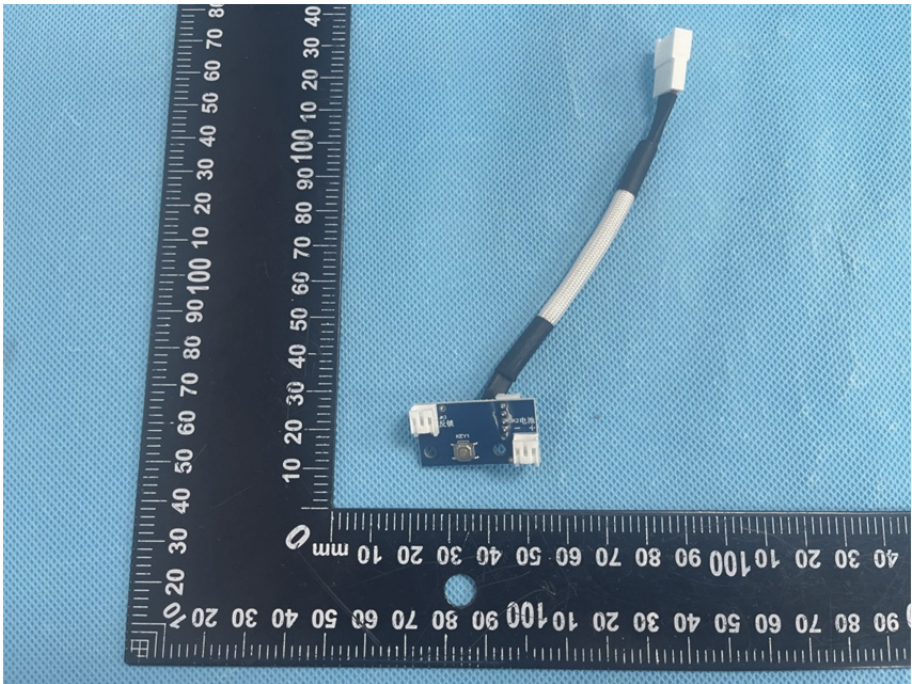
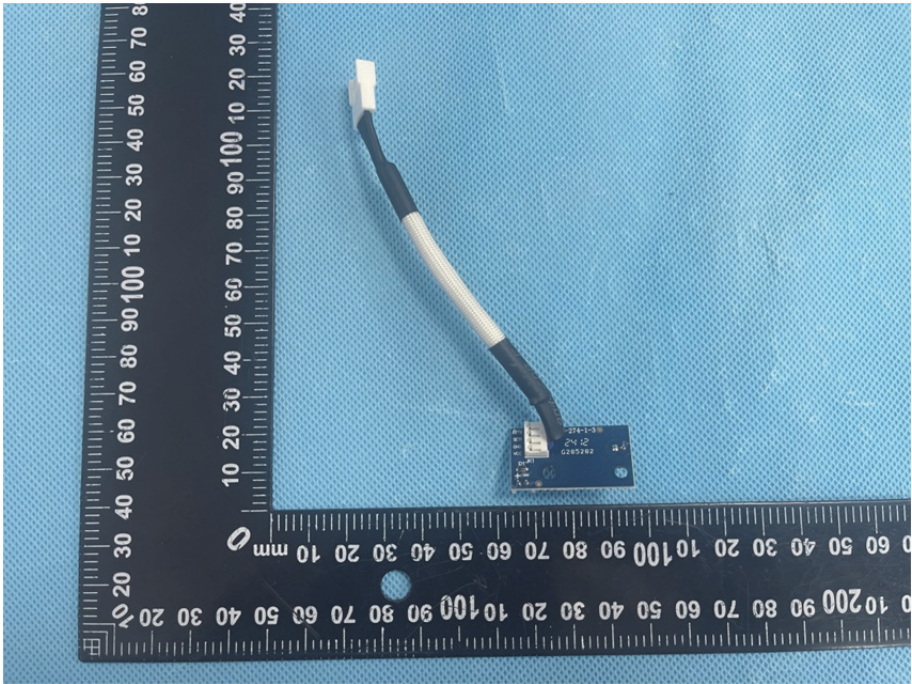


**EUT Housing and Board View 2**



<p><b>EUT Housing and Board View 3</b></p>	 A photograph showing the EUT housing and board from a top-down perspective. The housing is a light-colored, rectangular plastic shell with a black handle. The board is a dark-colored printed circuit board (PCB) with various components. A black ruler is placed vertically to the left of the housing and board for scale. The ruler has markings in millimeters and centimeters. The background is a blue textured surface.
<p><b>Solder Board-Component View 1</b></p>	 A photograph showing a close-up view of a solder board component. The component is a small, square PCB with various electronic components, including a microcontroller, capacitors, and resistors. A black ruler is placed vertically to the left of the component for scale. The ruler has markings in millimeters and centimeters. The background is a blue textured surface.



<p><b>Solder Board-Component View 3</b></p>	 <p>A photograph showing a small blue printed circuit board (PCB) component with a white connector and a black cable. The component is placed on a blue textured surface next to a black L-shaped ruler for scale. The ruler has markings in millimeters and centimeters. The component is oriented vertically, with the connector at the top and the cable extending downwards.</p>
<p><b>Solder Board-Component View 4</b></p>	 <p>A photograph showing the same small blue PCB component as in View 3, but from a different angle. The component is placed on a blue textured surface next to a black L-shaped ruler for scale. The ruler has markings in millimeters and centimeters. The component is oriented horizontally, with the connector on the left and the cable extending to the right.</p>

