

DAZHì

G351B Car Recorder **Instruction Manual**

Preamble

First of all, thank you for buying our HD car tachograph products!

This product is a stylish, beautiful, convenient and durable multi-functional vehicular dashcam based on maintaining the original appearance of the original car, and specially developed for the recording and forensics in today's driving process. It is the best choice for you to record your driving life and escort!

This product is a professional high-definition recorder. It can record both high resolution video and high pixel photos. This product uses TF card as a storage device, easy to carry, compared with traditional cameras, this product has a delicate appearance, does not affect the overall beauty of the car after installation, humanized design makes you enjoy comfortable treatment!

This manual will explain how to use, operation, technical specifications and precautions. Please read this manual carefully before use, please take good care of this manual, we hope this product can meet your needs and serve you for a long time! Use this product to enjoy a truly high quality life! During the printing process of this manual, the product may be inconsistent with some operations of this manual due to the appearance, software or hardware repair process. Please understand!

User notice: Do not disassemble, repair or replace the product in case of errors or accidents during use. If you find reasons attributable to the user, you may not be able to obtain warranty repair services. If smoke or burning smell occurs on the device, remove the power supply cable immediately. Do not spray water or other liquid directly on the product, which may cause damage to the product, short circuit electric shock or fire. Please keep the camera of this product clean and not blocked by anything. When there are other items placed around this product, the shadow of this item may be recorded in the video due to the reflection of the glass mirror. Make sure that the product is installed firmly and securely. Do not move or pound the product after installation. Please make sure to use the car charger power cord or safety box attached to the product package to take the wire. Other wiring harnesses may cause damage to the product, short circuit, electric shock, fire, etc. Do not handle this product while driving.

Product Features

1. the use of maximum 160 degrees wide Angle lens.
2. Adopt 3-inch HD IPS display.
3. the screen can display the front and rear camera screen at the same time, the operation shortcut key to switch the screen is simple and convenient.

4. with the front 4K+ 1080P high quality resolution.
5. built-in WIFI module, operation shortcut key to open WIFI function.
6. built-in GPS module, can automatically update the machine time and display azimuth, latitude and longitude, speed.
7. intelligent voice control, convenient and faster operation.
8. event G-sensor sensing, in case of emergencies, forced lock to save the current video.
9. no gap continuous recording function, will not miss any data.
10. can start the car automatic boot, automatic video function.
11. can automatically cycle video, can set the recording time.
12. support local and APP playback view video.
13. one key on/off recording, lock function.
14. car charger or safety box take wire 5V/2.5A power supply.
15. the maximum support for 256GB CLASS10 TF card high-capacity storage device (ensure that the brand is genuine, the first use on the product must be formatted, and regularly formatted once or twice a month).

Operation Guide

Connect the power cord to power the dashcam, connect the power detection line of this product to the ACC of the car, so that the product will automatically start recording after the car starts; when the car is turned off, it will automatically stop recording and save the recorded files. If the parking monitoring mode or time-lapse recording function is turned on, it will enter the corresponding recording mode.

Warm Tips: Please use the power cord that comes standard with this machine to power this machine, otherwise, it may cause damage to the machine.

Memory card use: Please determine the insertion direction of the TF card. If the insertion direction is incorrect, it may damage the machine and the TF card: Please use a high-speed TF card that meets the TFHC specification. The high-speed TF card will have a C10 logo. For this product, please use a genuine TF card with a C10 logo or above. When inserting a TF card into this machine, please format the TF card on this machine.

Tips:

1. Front lens general recording and time-lapse video are saved in CarDv \ Front \ video folder.
2. Front lens lock and parking surveillance video are saved in CarDv \ Front \ event folder.

3. Rear lens general recording and time-lapse video are saved in CarDv \ Rear \ video folder.
4. Rear camera lock and parking surveillance video are saved in CarDv \ Rear \ event folder.
5. Save the Front lens photo in CarDv \ Front \ photo folder.
The pictures taken by the Rear lens are saved in the CarDv \ Rear \ photo folder.

Product appearance



①Power button / Confirm button	②TF card slot	③Car charging and power supply port	④3M sticker
⑤Fuse box line power supply port	⑥Front camera	⑦loudspeaker	⑧Down key
⑨Up key	⑩Menu / lock button	⑪Rear camera socket	⑫Video indicator
⑬WiFi indicator	⑭Display area		

Buttons Function Description

- **Menu /lock button**

When the external power supply is powered on and off, press [power button] to start the power automatically.

On the recorder interface, press [Power button] to turn off/start recording.

In menu mode, press [Power button] to confirm the selected menu item or set a value.

In file browsing mode, press the [Power button] to play/pause the video

In any interface under startup state, long press [Power button] and hold for 3 seconds. The machine will automatically save the video file and user Settings and shut down.

- **TF card slot**

The location where the external memory card is inserted. Please pay attention to the direction when inserting the TF card. The metal surface of the TF card is in the same direction as the display screen. Do not force it. After the TF card is inserted, cover the silicone plug.

- **Car charging and power supply port**

During the installation of the cigarette lighter, insert the power interface to the end to avoid abnormal contact.

- **3M sticker**

Tear off the red film on the surface and stick the product to a suitable position on the windshield that does not block the driving view.

- **Fuse box line power supply port**

Take the cable for the socket of the fuse box. During the installation, plug the power socket to the end to avoid abnormal contact.

- **Front camera**

Main camera, please tear off the lens protective film after installation and adjust the camera up and down to the appropriate position of the recording field of view.

- **Down key**

Record screen: Press to open/close the audio recording screen, and hold down for 2 seconds to take a quick photo.

Preview mode: Switch to the next properties file or the next file.

Menu mode: Switch to the next option.

- **Up key**

Record interface: Tap to switch to different display states of the camera screen, and hold down for 3 seconds to quickly turn on/off the WIFI function.

Preview mode: Switch to the previous file.

Menu mode: Switch to the previous option.

- **Menu /lock button**

Record video screen: Press and hold for 3 seconds to lock the current recording video.

Pause recording screen: Tap to enter the menu setting screen, and tap again to switch to the menu setting screen.

Pause recording screen: Hold down for 3 seconds to enter the file preview screen.

File preview screen: Tap to enter the menu setting screen.

- **Rear camera socket**

Rear camera cable socket, during installation, the video extension cable interface needs to be inserted and pressed to the bottom to avoid abnormal contact.

- **Video indicator**

Recording status: Blue light blinking

Pause recording: The blue light is on

- **WIFI indicator**

On: The red light is steady on

Off: The red light is off

Voice control function description

During normal recording of the dashcam, you can use Mandarin voice operation instructions, voice control entries:

Say "show front recording": display the front camera screen

Say "show rear recording": display the rear camera screen

Say "turn off screen": turn off the backlight brightness of the display screen

Say "turn on screen": turn on the backlight brightness of the display screen

Say "turn on WIFI": turn on the WIFI function

Say "turn off WIFI": turn off the WIFI function


Say "I want to take a photo": take a picture

Say "lock video": lock the current video segment

Say "show main interface": display the 2 camera screen interfaces

Way to install



- When a TF card is inserted in the machine, it will automatically enter the recording mode after turning on. When recording, there is a flashing icon  in the upper left corner of the screen. Press the power button/confirm button to stop recording, and press the confirm button again to start recording;

- Holding down the menu key/Lock key will lock the current video file, and a red "lock" icon will appear on the top edge of the display screen.
- Long press the flip button to capture the picture;
- Short press the up button to switch the real-time screen of the camera, and the screen is displayed in three modes respectively: single front/single back/front + back;After the recording is paused, press the menu key to enter the menu mode, and press the menu key to switch successively.

Function introduction

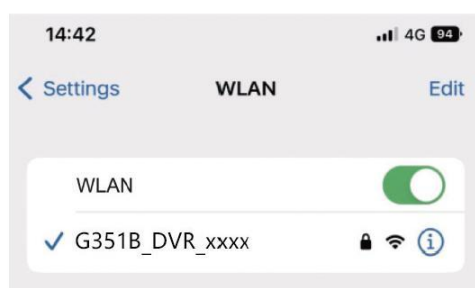
1. Resolution: Users can choose UHD P30, QHD P30, FHD 30 three resolutions for recording, this option is only valid for the front camera resolution Settings, the default rear camera is FHD P25.
2. Loop recording: The duration of each video recording, the user can choose the length of each video, the machine supports 1/2/3 minutes three modes.
3. Recording audio: Whether to turn on audio recording for recording video, the user can choose to turn off or turn on it as required.
4. Date label: After opening the recording video with the date and time watermark of the machine at that time, when closing the video playback without the date and time of the machine at that time recording.
5. Vibration sensitivity: The built-in collision gravity sensor (G-sensor), if there is a serious vehicle collision, the recorder will lock the current image data at the time of the accident, this file will not be covered by the cycle, vibration sensitivity can be changed according to the actual need.
6. Parking monitoring (optional safety box to take wire support) : open the collision detection mode, the recorder is vibrated when it is off, the recorder can sense according to G-SENSOR, automatically start the machine and record for 30 seconds, and then shut down. When the parking monitoring mode is not opened, the recorder will not turn on when it is shaken; The collision detection sensitivity can be changed according to actual needs.
7. Time-lapse video (optional safety box to take wire support) : Set the choice of 8 hours, 12 hours, 24 hours three time-lapse video modes, car parking and extinguishing recorder low power consumption time-lapse 1 second 1 frame video system.
8. Timed screen off: It can enter the automatic screen off state when there is no operation on the recording interface. The machine supports three duration: 10 seconds, 30 seconds and 2 minutes.
9. Key sound: The sound produced by key operation.

10. Language Settings: The machine supports simplified English, Simplified Chinese, traditional Chinese three languages of local display, users can choose the language according to needs.
11. Date and time: Set the local system time.
12. Format the memory card: Format the current external storage TF card.
13. Restore factory Settings: After confirming this function, restore to the initial setting of the product (the system time is not reset).
14. Version: Displays the current system version of the local device.

WiFi operation instructions

Install mobile APP

- Select the common mobile phone to scan the WIFI information QR code or search viidure for download and installation

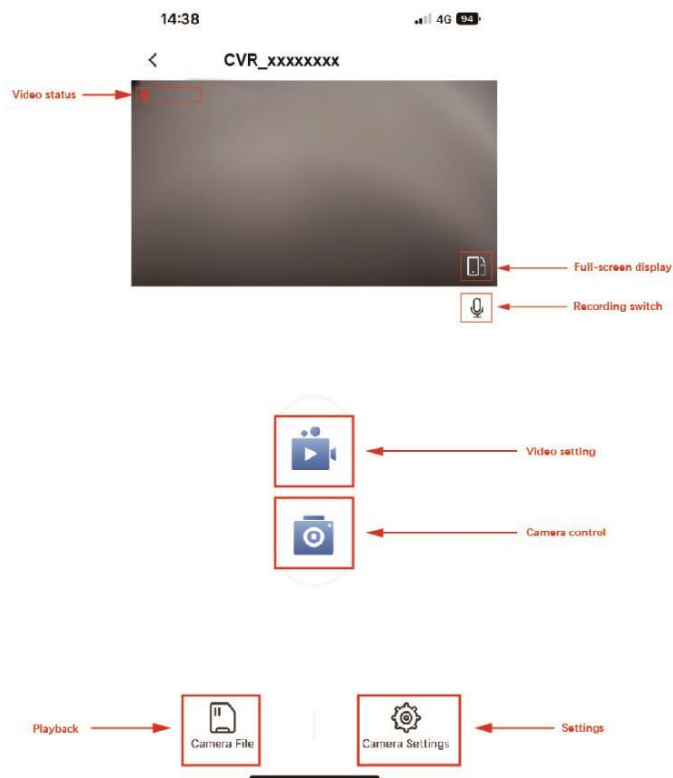
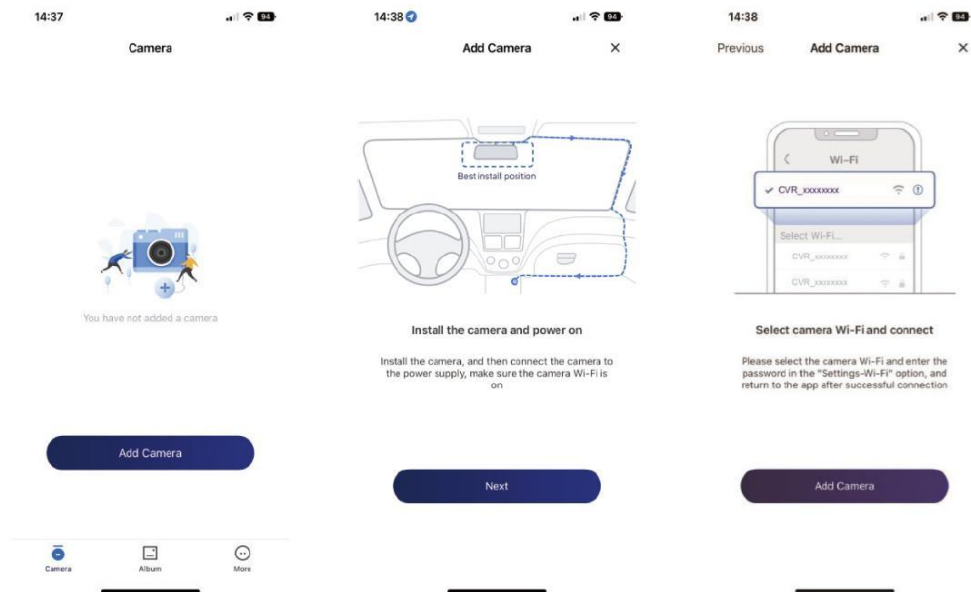


WiFi phone connection

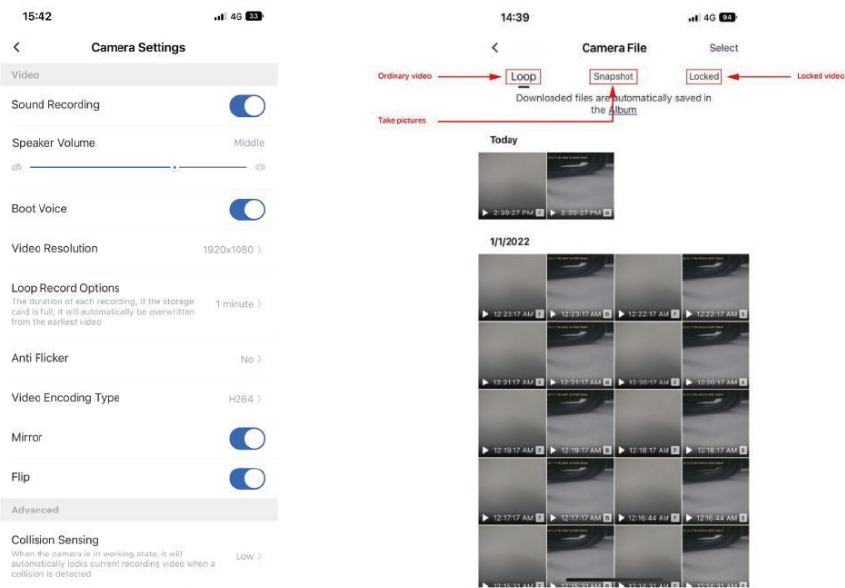
- Press the menu key to select WIFI option, turn on WIFI, or long press the Up button on the main interface of recording for 3 seconds to turn on WIFI function;
 - Search for WiFi on your mobile phone, find the name of WiFi: G351B_DVR_XXXX, enter the password: 12345678 to connect
- Note: Only one phone can be connected to one dashcam at a time

APP operation

- Open the APP, add the recorder, and enter the preview interface of the recorder after the successful addition of the steps



- Settings/Playback interface



Other instructions

- WiFi cannot be connected: Make sure the dashcam is turned on or connected to other mobile phones (only one mobile phone can be connected at the same time)
- The dashcam cannot record: Make sure the TF card is full or damaged. You can format the TF card or replace the TF card for troubleshooting
- The APP screen is not smooth or not real-time: Try to keep the background software of the mobile phone as few as possible, and keep the mobile phone close to the dashcam. You can close the APP and restart (Wifi channels compete for bandwidth, and adjacent channels interfere with each other)
- The image quality is not clear: Check whether the dashcam lens and car windshield is dirty
- This system supports a maximum of 256G TF memory card. In order to keep the video recording smooth, it is recommended to use a Class 10 or high-speed card. At the same time, do not plug or unplug the TF card when the system is turned on to avoid damaging the TF card.
- TF cards are consumables. Please maintain them regularly, such as formatting them every 1 to 2 months.

Product parameter

Product Features	4K HD Wi-Fi dashcam
G-sensor	Built in (video saved in case of emergency, not deleted)
IPS screen size	3 inch HD display
Language	Simplified Chinese, English and other languages
Front cam resolution	3840*2160P/30fps
Rear cam resolution	AHD 1080Pp/25fps
Video file format	.TS
Image file format	JPG
Color effect	Standard
Loop recording	Seamless loop recording, no missing seconds
Power on off	Follow with the car start and off
Time-lapse recording	Support
Parking monitoring	Support
WiFi	Support
Voice control	Support
One click function	Support
Time watermark	Support
Memory card	TF (maximum support 256GB)
Built in microphone	High fidelity microphone
Built in speaker	8Ω /0.5W
USB	Type-C
Power supply DC	5V/ 2.5A
Storage temperature	-30°C~80°C
Working humidity	15-65%RH
Working temperature	-15°C~65°C

Easy troubleshooting

The dashcam shows that the memory is full and cannot loop recording:

1. First, please format the new card before using it on the dashcam for the first time.
2. Too many manually locked videos occupy storage space. The locked files cannot be overwritten. If there are too many locked files, the memory will be full and cannot loop.

The screen is stuck or the button response is slow during recording:

1. Please first check whether the memory card used is a high-speed card (Class10). If a non-high-speed card is used, there may be problems such as missing seconds, video playback stuck, screen distortion, and crash. (At the same time, because the quality of high-speed cards on the market is uneven, you should buy branded memory cards when purchasing).

The recording time is not saved or deviated after turning off:

1. Check whether the dashcam is recording normally. If it is in a dead state, the time cannot be updated.
2. Connect to the APP regularly every month to synchronize and update the time. If the APP is not connected for a long time, there will be time deviation.
3. Check whether the yellow line in the power cord is connected to the original car battery socket correctly.

Disclaimer

The dash cam is a recording device for video and sounds during the driving process of the vehicle. It is only used as an auxiliary reference in case of an accident.

Special note: The dashcam must be in normal recording working state to record video files.

However, the image may be damaged or lost in the following situations;

1. Pulling out the TF card during recording will cause the video file to be damaged or lost.
2. Illegal power failure during recording will cause the last video file to be damaged or lost.
3. The video file is damaged or lost due to a destructive collision of the dashcam during recording.
4. The video file is damaged or lost due to excessive collision during recording, which causes the memory card to loosen at that time.
5. The video recorded by the dash cam is only for reference. Our company is not responsible for bad files, data loss, etc. caused by abnormal working conditions of the dashcam.

Model: G351B



Official Website



Service Center



Customer Service

Guangdong DAZHI Automobile Technology Co.

Tel:0752-2300059

Official website: www.daza168.com

Email:dazaLei@daza168.com

R&D Center: C1, 7/F, Building 3, Lehui Center, Jihua Road, Bantian Street, Longgang District, Shenzhen, Guangdong, China

Factory Address: 7-12F, Building B4, Gaosheng Xihu Zhigu Industrial Park, No.40 Hongling 3rd Road, Shukou Street, Huicheng District, Huizhou City, Guangdong Province, China

FCC Statement

This device complies with part 15 of the FCC rules. Operation is subject to the following two conditions: (1) this device may not cause harmful interference, and (2) this device must accept any interference received, including interference that may cause undesired operation.

Caution: Changes or modifications not expressly approved by the party responsible for Compliance could void the user's authority to operate the equipment.

NOTE: This equipment has been tested and found to comply with the limits for a Class B digital device, pursuant to part 15 of the FCC Rules. These limits are designed to provide reasonable protection against harmful interference in a residential installation. This equipment generates and can radiate radio frequency energy and, if not installed and used in accordance with the instructions, may cause harmful interference to radio communications. However, there is no guarantee that interference will not occur in a particular installation. If this equipment does cause harmful interference to radio or television reception, which can be determined by turning the equipment off and on, the user is encouraged to try to correct the interference by one or more of the following measures:

- Reorient or relocate the receiving antenna.
- Increase the separation between the equipment and receiver.
- Connect the equipment into an outlet on a circuit different from that to which the receiver is connected.
- Consult the dealer or an experienced radio/TV technician for help.

Radiation Exposure Statement

To comply with FCC RF exposure compliance requirements, this grant is applicable to only mobile configurations. The antennas used for this transmitter must be installed to provide a separation distance of at least 20 cm from all persons and must not be co-located or operating in conjunction with any other antenna or transmitter.