

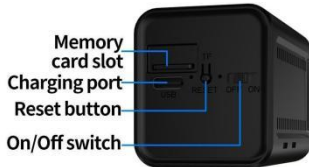
# WIFI Low Power Battery Camera



## **APP Instruction Manual**

**As the APP is updated, there will be some changes, the manual is for reference only!**

# Product Indicator Lights and Button Descriptions



**Power on:** Switch to ON, the indicator light will light up for 1 minute and the startup is complete.

**Shutdown:** Switch to OFF, the indicator light will turn off and the machine will shut down.

**Reset:** Press and hold the reset button, the red and blue lights flash at the same time that means the reset is successful.

**Charge:** Green light stays on when charging, goes off when fully charged

**Memory card:** Inserted with the chip facing downwards, to be operated with the camera switched off

### **Indicator status**

- 1. Blue light flashing slowly - - - Pending network distribution status**
- 2. Blue light is always on - - - Remote status**
- 3. Red light blinks slowly-----A P hotspot status**
- 4. Long green light----- Charging status**

# Download Mobile Client

1. Open your browser and scan the QR code below Download and install the monitoring APP
2. Search UBox in the app market. Download and install the monitoring APP



UBox

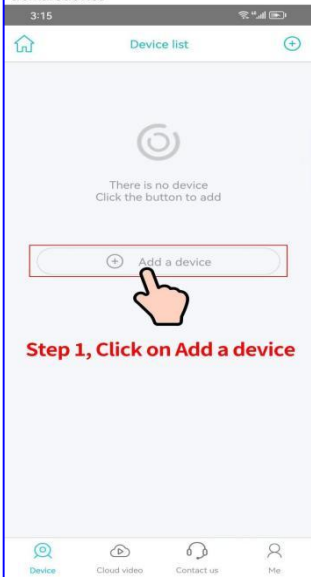


(APP Icon)



①Register account,②Login account

**Step 1: Press the + sign to add a smart device**



**Step 2: Click to install the WIFI device**



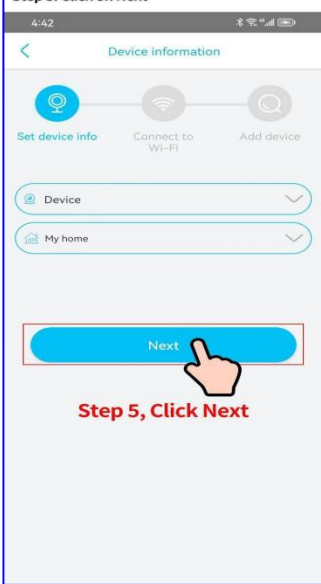
### Step 3: Click on ALLOW



### Step 4: Click OK to configure



### Step 5: Click on Next



**Step 5, Click Next**

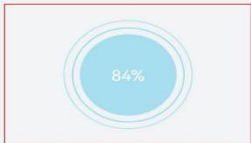
### Step 6: Select WiFi, enter the password and click(Configure)



**Step 6, Automatically identify the WIFI that the phone is connected to, fill in the WIFI password, and click Configuring Device.**

### Step 7: Wait for the machine to be successfully configured

4:45



Please keep the phone and  
the camera at a distance of  
about 1-2m

**Step 7: Wait until the machine  
is successfully configured**

### Step 8: Click OK

4:46



Connecting the device timed  
out. Please reset the device  
and add it again

**Step 8, Click on OK**

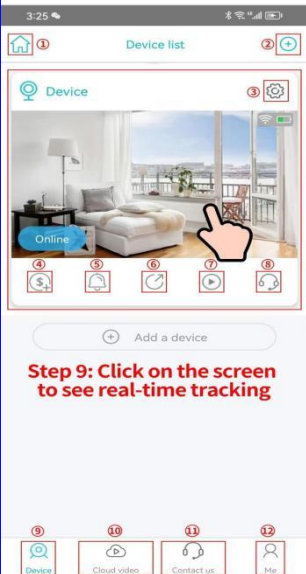
OK



Please keep the phone and  
the camera at a distance of  
about 1-2m



**Step 9: Click on the screen to watch the real-time monitoring APP page icon**

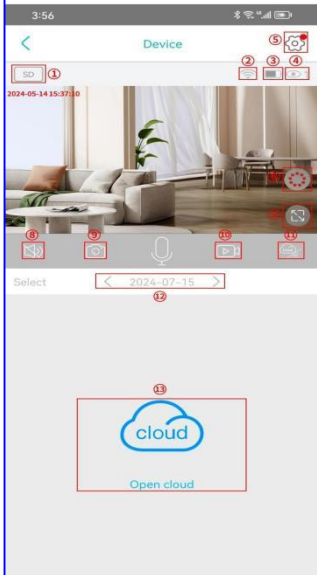


**Step 9: Click on the screen to watch the real-time tracking**

## Function

- ① **Device Name Setting**
- ② **Add Device**
- ③ **Setting up the device**
- ④ **Buy Cloud Services**
- ⑤ **Enable/disable notification switch**
- ⑥ **Share Management**
- ⑦ **Enable/disable cloud storage**
- ⑧ **Customer Service 1**
- ⑨ **Device Display List**
- ⑩ **Cloud Storage Video**
- ⑪ **Customer Service 2**
- ⑫ **Account Settings**

## Control screen function icons



## Function

- ① HD/SD Switching
- ② WiFi signal value
- ③ Power display value
- ④ Equipment viewers
- ⑤ More Settings Icons
- ⑥ Infrared light switch
- ⑦ Full screen view
- ⑧ Turn on listening
- ⑨ Capture (an image)
- ⑩ Videotape
- ⑪ Cloud storage/memory card playback
- ⑫ View Playback Date
- ⑬ Cloud Storage Open Channel

**Scan**



**Connecting cell phone for remote monitoring**

**FCC WARNING**

This device complies with part 15 of the FCC Rules. Operation is subject to the following two conditions: (1) this device may not cause harmful interference, and (2) this device must accept

any interference received, including interference that may cause undesired operation.

Any changes or modifications not expressly approved by the party responsible for compliance could void the user's authority to operate the equipment.

NOTE: This equipment has been tested and found to comply with the limits for a Class B digital device, pursuant to Part 15 of the FCC Rules. These limits are designed to provide reasonable protection against harmful interference in a residential installation. This equipment generates, uses and can radiate radio frequency energy and, if not installed and used in accordance with the instructions, may cause harmful interference to radio communications.

However, there is no guarantee that interference will not occur in a particular installation. If this equipment does cause harmful interference to radio or television reception, which can be determined by turning the equipment off and on, the user is encouraged to try to correct the interference by one or more of the following measures:

- Reorient or relocate the receiving antenna.
- Increase the separation between the equipment and receiver.
- Connect the equipment into an outlet on a circuit different from that to which the receiver is connected.
- Consult the dealer or an experienced radio/TV technician for help.

To maintain compliance with FCC's RF Exposure guidelines, This equipment should be installed

**and operated with minimum 20cm distance between the radiator and your body: Use only the supplied antenna.**