

封面

展开尺寸：320*150mm

PRODUCT MANUAL



I.Cautions

(The following basic safety precautions should be always complied with)
Avoid casualties and property loss, please always follow the attentions in the below.

Prohibition

1. Do not use unstable plug or power.
2. Do not install the device at the place where children can touch.
3. Connect it right, prevent electric short-circuiting.
4. Do not lift the device.
5. Keep the device away from fire and heat source, prohibit to store flammable and explosive materials around the device.
6. Except for the atomizer, the housing material is not resistant to corrosion.
7. Do not use device in high temperature or wet environment.
8. Do not use inflammable, explosive, corrosive and other hazardous solvents work with the device.

Note

NECESSARY INSTALLING
1. Install the device in a ventilative and adequate space.
2. Do not block the sprayer by hand or other obstructions when the device is working.
3. Do not spill water or conductive, corrosive liquid on the device surface or full inside of the device.
4. Do not operate device without stopping. Suggested average daily usage time should not exceed 8 hours.
5. Cut off the power in extreme weather environment.

ATTENTION

This diffuser is unique for using fragrance of without adding water.
For a better performance of the perfume in the environment, we recommend only using pure essences.

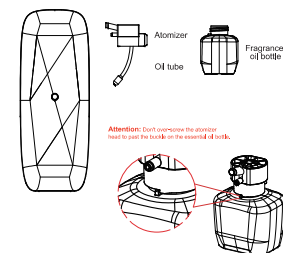
II.Product Parameter

Approved Certificate :CE, FCC ,ROHS and so on



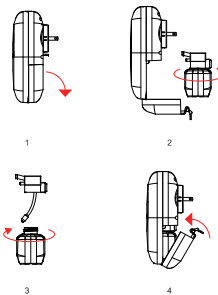
Voltage: 5V
Power: 1.6W
Capacity: 100ml
Volume: <30dba
Weight: 0.25KG
Coverage: 200-250m²
Size: 64*66*168mm

III.Accessories Instruction



Attention: Don't compress the atomizer head to put the bottle on the essential oil bottle.

IV.How to use the equipment



V.Operation Introduction

1. The device has a button:

Button function:

(1) Short press to turn on and off. After startup, the device operates according to the time period and frequency. After shutdown, the machine stops working.
(2) Press and hold the button for more than 5 seconds, and the device will return to its factory settings, including Bluetooth name, working time period, and working frequency.

2. APP control

(1) Time period setting: It is possible to set a time period from Monday to Sunday, with 3 time periods per day, during which the equipment operates;
(2) Levels and frequency settings: You can set several fixed levels or a user-defined frequency.

VI.APP operations and settings

To ease use machine, it support use mobile phone to set the machine.

1.Download Air essentals

Please enter the App store, Google Play Store or Android App store, then input Aroma-Link and download the App.



iOS APP



Android APP

To start configuring the diffuser on phone, please scan QR code to download " Air essentals "App.

2.App connection

(1) Turn on the Bluetooth function on your phone.
(2) Run our Aroma-Link app and choose Bluetooth mode. Then click My Devices, you will find the device name SmartA7 (Mobile should nearby to machine).
(3) Click this device and put the password 1234 (default setting is 1234), the machine will be connected successfully.
Reference the pictures (Figure 1 to Figure 4)



Figure 1



Figure 2



Figure 3



Figure 4

3. App Settings

(1) Setting interface: Turn on & off button / Light switch button / Working time setting / Concentration setting / Rename (as shown in Figure 5).
(2) Light switch button: three kinds of light to display cold / warm/gradient (as shown in Figure 5).
(3) Working Period setting: Period / Start time / Concentration setting (as shown in Figure 6).
(4) Concentration setting: seven choices: Faint (5/86S) / Light(10/27ba) / Moderate(15/21ba) / Aromatic(15/18ba) / More(20/12ba) / Strong(30/9ba) / Customize(as shown in Figure 7).

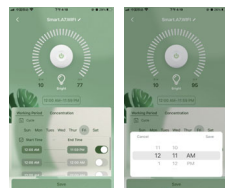


Figure 5

Figure 6



Figure 7

(5) Custom concentration setting: set working time/pausing time (Note: working time set: 5-30s/pausing time set: 90-600s) (As shown in Figure 8).
(6) Rename: Click "✓" (as shown in Figure 9).

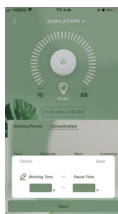


Figure 8

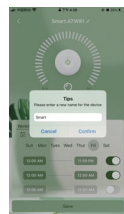


Figure 9

VII.Fault Inspection

No scents	1.Check battery or the supply cable. 2.Check the machine is within the working time or not. 3.Check the pump working or change the spray nozzle. 4.Check the pump tube and Oil tube connection.
Scents weak	1. Check the sealing ring of air outlet tube whether damaged and the suction pipe whether bent or blocked. 2.Check the spray nozzle whether loose or change to new one.
Oil leak	1.Check the atomizer whether damaged or not. 2.Check atomizer and oil bottle whether screwed tightly in parallel.
Unusual noise	1.Check pump whether full out, and re-install the air pump. 2.Check the door of the machine whether loose or not locked. 3.Check the pump whether is low airflow and low pressure.

VIII.Warranty and after-sales service

1.After-sales service

(1) Provide free technical solutions and installation process guidance.
(2) Provide free online FAQ consultation and scent-marketing suggestion.

2.Equipment warranty and attentions

(1) All devices enjoy 12 months free maintenance (from the day of purchase).
(2) Please provide the warranty card,invoice or other provent which can prove that it was ordered from our company to enjoy the free maintenance.
(3) The fault caused by human or other wrong operation does not fall into the warranty scope, and will not be accepted to provide free maintenance.

IX.Machine Maintenance

(1) Please clean the device periodically by replacing the essential oil to alcohol to work, suggest 2-3 months in 1 circle, so that it can work under the best condition.
(2) Please cut off the power when cleaning and also do not use wet hand to operate it directly in case of electric shock and injury.

X.Long-term non-use

(1) Please turn off the device and cut off the power, and then roll up the power cord.
(2) Clean the filter components.
(3) Place the deodorant package which contains activated carbon in the device or package to prevent residual substances in the equipment from producing odor.
(4) Please equip the machine with the dust cover and then place it in the shady and ventilative place.

XI.Accessories and spare parts

Name	Quantity	Name	Quantity
Aroma device	1PC	User manual	1PC
Fragrance bottle (including cap)	1PC	Warranty card	1PC

This device complies with part 15 of the FCC Rules. Operation is subject to the following two conditions: (1) this device may not cause harmful interference, and (2) this device must accept any interference received, including interference that may cause undesired operation.

Any changes or modifications not expressly approved by the party responsible for compliance could void the user's authority to operate the equipment.

NOTE: This equipment has been tested and found to comply with the limits for a Class B digital device, pursuant to Part 15 of the FCC Rules. These limits are designed to provide reasonable protection against harmful interference in a residential installation. This equipment generates, uses and can radiate radio frequency energy and, if not installed and used in accordance with the instructions, may cause harmful interference to radio communications. However, there is no guarantee that interference will not occur in a particular installation.

If this equipment does cause harmful interference to radio or television reception, which can be determined by turning the equipment off and on, the user is encouraged to try to correct the interference by one or more of the following measures:

- Reorient or relocate the receiving antenna.
- Increase the separation between the equipment and receiver.
- Connect the equipment into an outlet on a circuit different from that to which the receiver is connected.
- Consult the dealer or an experienced radio/TV technician for help.

The device has been evaluated to meet general RF exposure requirement. The device can be used in portable exposure condition without restriction.