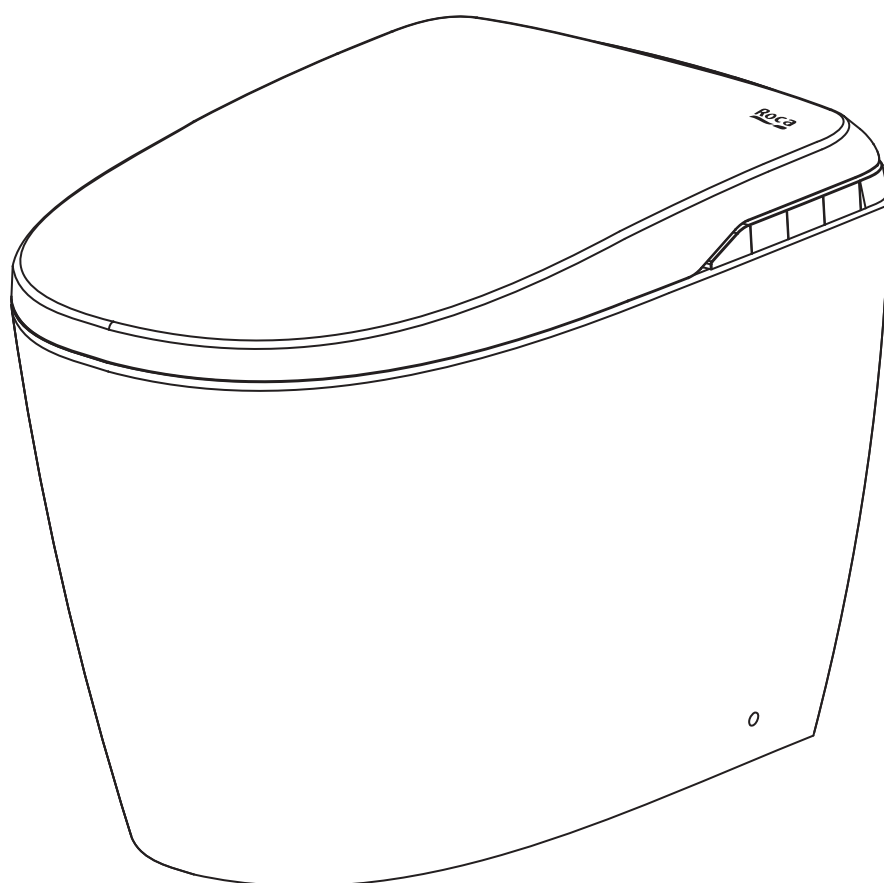


**Roca**

## **IN-WASH INSIGNIA 2.0**

**A80314600C**



# IMPORTANT SAFEGUARDS

When using electrical products, especially when children are present, basic safety precautions should always be followed, including the following:

- READ ALL INSTRUCTIONS BEFORE USING** WARNING-To reduce the risk of burns, electrocution, fire, or injury to persons.
1. Close supervision is necessary when this product is used by, on, or near children or invalids.
  2. Use this product only for its intended use as described in this manual. Do not use attachments not recommended by the manufacturer.
  3. Never operate this product if it has a damaged cord or plug, if it is not working properly, if it has been dropped or damaged, or dropped into water. Return the product to a service center for examination and repair.
  4. Keep the cord away from heated surfaces.
  5. Never block the air openings of the product or place it on a soft surface, such as a bed or couch where the air openings may be blocked. Keep the air openings free of lint, hair, and the like.
  6. Never use while sleeping or drowsy.
  7. Never drop or insert any object into any opening or hose.
  8. Do not use outdoors or operate where aerosol (spray) products are being used or where oxygen is being administered.
  9. Connect this product to a properly grounded outlet only. See Grounding instructions.

## SAVE THESE INSTRUCTIONS

### GROUNDING INSTRUCTIONS

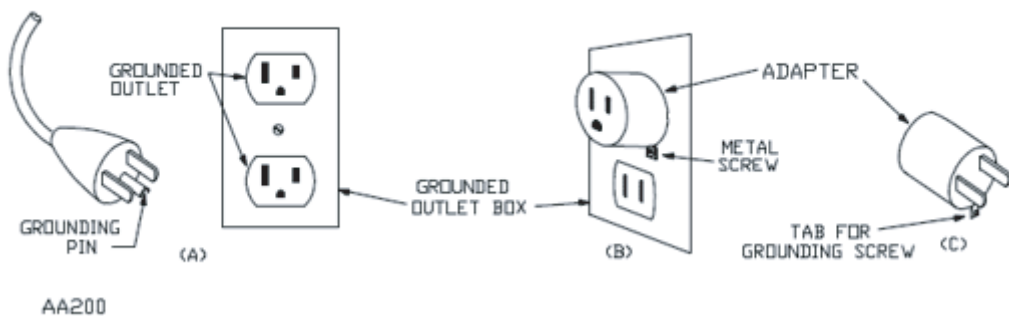
This product should be grounded. In the event of an electrical short circuit, grounding reduces the risk of electric shock by providing an escape wire for the electric current. This product is equipped with a cord having a grounding wire with a grounding plug. The plug must be plugged into an outlet that is properly installed and grounded.

**DANGER-** Improper use of the grounding plug can result in a risk of electric shock. If repair or replacement of the cord or plug is necessary, do not connect the grounding wire to either flat blade terminal. The wire with insulation having an outer surface that is green with or without yellow stripes is the grounding wire.

Check with a qualified electrician or serviceman if the grounding instructions are not completely understood, or if in doubt as to whether the product is properly grounded.

This product is for use on a nominal 110 V circuit, and has a grounding plug that looks like the plug illustrated in sketch A in below Grounding methods. A temporary adapter, which looks like the adapter illustrated in sketches B and C, may be used to connect this plug to a 2-pole receptacle as shown in sketch B if a properly grounded outlet is not available. The temporary adapter should be used only until a properly grounded outlet (sketch A) can be installed by a qualified electrician. The green colored rigid ear, lug, and the like extending from the adapter must be connected to a permanent ground such as a properly grounded outlet box cover. Whenever the adapter is used, it must be held in place by the screw.

#### Grounding methods



This device complies with part 15 of the FCC Rules. Operation is subject to the following two conditions: (1) This device may not cause harmful interference, and (2) this device must accept any interference received, including interference that may cause undesired operation.

Changes or modifications to this unit not expressly approved by the party responsible for compliance could void the user's authority to operate the equipment.

NOTE: This equipment has been tested and found to comply with the limits for a Class B digital device, pursuant to Part 15 of the FCC Rules. These limits are designed to provide reasonable protection against harmful interference in a residential installation. This equipment generates uses and can radiate radio frequency energy and, if not installed and used in accordance with the instructions, may cause harmful interference to radio communications.

However, there is no guarantee that interference will not occur in a particular installation. If this equipment does cause harmful interference to radio or television reception, which can be determined by turning the equipment off and on, the user is encouraged to try to correct the interference by one or more of the following measures:

- o Reorient or relocate the receiving antenna.
- o Increase the separation between the equipment and receiver.
- o Connect the equipment into an outlet on a circuit different from that to which the receiver is connected.
- o Consult the dealer or an experienced radio/TV technician for help.



Please read over the Safety Precautions before use the product. All items listed here are important contents related to operation safety, which must be observed strictly. Do not connect or disconnect the power plug with wet hands.

- Otherwise, it may result in electric shock accidents.

Do not splash water, hot water or detergent on the body and the power plug.

- Otherwise, it may result in fire, electric shock, heating, or short circuit.

- Otherwise, it may cause product damage and result in injury or seepage.

Do not dismantle, repair or modify the product

- Otherwise, it may result in fire, electric shock, heating, or short circuit.

Do not install the product on vehicles, ships or other moving objects

- Otherwise, it may result in fire, electric shock, short circuit or malfunction.

- Otherwise, the seat, the lid, the body or other parts may fall off and result in personal injury.

In the event a fault is identified, stop using the product.

In case any of the following conditions, please disconnect the power supply from the distribution box and close the angle valve to cut off water supply. Faults:

- Water leaking from the pipes and the product

- Cracks or damage on the product

- Abnormal sounds and odors

- Smoking identified

- Abnormal overheating of the product

- Toilet clogged

- Seat cushion falling off

- Using the product with fault identified may result in fire, electric shock, overheating, short circuit, injury or seepage.

Installation safety

1.For smart toilets, an angle valve should be provided and installed at the most front end of the water inlet line, to ensure that users can operate the angle valve easily to cut off the water inlet line of the product without requiring disassembling the product or using tools.

2.If the smart toilet is not provided with an angle valve or a structure for convenient operation of the angle valve, an angle valve shall be installed at an easily accessible position in the same room where the product is installed for cutting off the inlet line of the product without requiring the help of any tools in case of emergency; otherwise, losses may incurred to users in case of product failure.

3.The new hose assembly supplied along with the product shall be used, and the old hose assembly should not be reused.

### WARNING!

Do not use water sources other than water from the inlet pipeline or potable well water (groundwater), and do not use seawater.

- Otherwise, it may result in dermatitis or product malfunction.

Do not touch the power plug during thundering

- Otherwise, it may result in electric shock accidents.

Prevent the contact between the water inlet hose and the power plug or sockets.

- Otherwise, it may cause moisture condensation and result in fire, electric shock, overheating, or short circuit.

Do not damage the power cord or the power plug

Using damaged product may result in fire, electric shock, overheating and short circuit.

- Using damaged product may result in fire, electric shock, overheating and short circuit.

Do not use power sockets in poor connection or with fault identified

- Otherwise, it may result in fire, or short circuit.

Please use power sockets and wiring appliances with prescribed ratings

- When the wiring exceeds the socket ratings, it may cause overheating and result in fire accident.

Use specified power supply (110V~, 60Hz) only (please see Figure 1)

- Otherwise, it may result in fire and over.

Do not block the warm air outlet with fingers or other objects

Do not cover air outlets with objects or clothing

- Otherwise it may result in scald, electric shock or malfunction.

Keep a safe distance between the product and lighted cigarettes or other fire sources

- Otherwise it may result in fire accidents.





The product must be grounded

- Failure to connect the product to the ground may result in electric shock accidents in case of product failure or electric leakage.
- The product must be grounded, and the grounding treatment mentioned here involves using a grounding resistance less than  $100\text{m}\Omega$ , and using a copper wire with a diameter of  $1.5\text{mm}$  as the grounding wire of the distribution panel.
- If the product is not provided with the earth leakage protection, it should be installed on the line with leakage protection device to ensure safe use; otherwise, product failure may result in mortal danger or property loss.
- If the product is not configured with an emergency breaking device, a power breaking device shall be connected in series in the power supply circuit in the same room to ensure safe use; otherwise, product failure may result in mortal danger or property loss.

• An engineering company shall be entrusted for ground wire installation.

Check and confirm the socket used is properly grounded (3-pin socket)

• Otherwise, it may result in electric shock accident in case of product failure or short circuit.

Otherwise, it may result in electric shock accident in case of product failure or short circuit.

• Otherwise, it may result in fire or electric shock accidents. According to the applicable national laws and regulations, the socket shall be properly positioned and kept away from bathtub as far as possible.

**A** The toilet should be installed in Area 3 as indicated in the figure. Toilets and associated accessories can only be installed in this area. Installing other electrical products in the toilet is extremely prohibited. The product shall be installed by qualified technicians in accordance with relevant national safety regulations. (See Figure 2)

• Please confirm that the wiring works mentioned above have been completed, otherwise, an engineering company shall be entrusted for the wiring works.

Make sure to fully insert the power plug into the socket.

• Otherwise, it may result in accidents such as fire, overheating, or short circuit.

Please confirm silicone has been provided as a waterproof measure to the power plug.

• Failure to provide waterproof treatment may result in fire or electric shock accidents.

• An engineering company shall be entrusted for waterproof treatment.

When disconnecting the power plug, hold the power plug and do not hold the power cord.

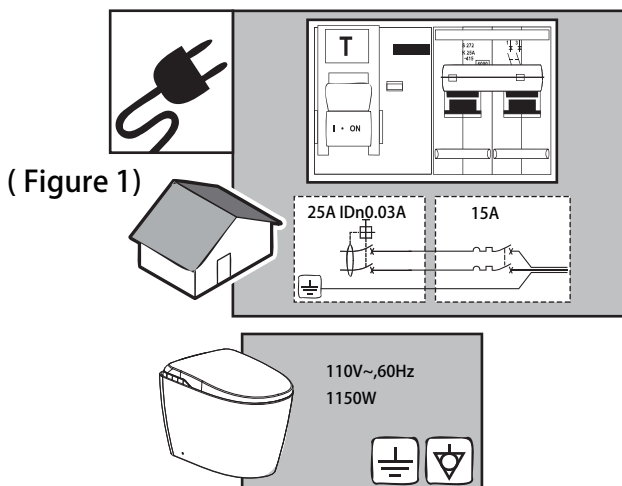
• Do not disconnect the power plug by pulling the power cord. Otherwise, it may cause power cord damage and result in fire or overheating.

• In case of power cord damage, to prevent hazards, the damaged cord must be replaced by the manufacturer, the maintenance department thereof or professionals from similar departments. Make sure to turn off the power supply of the distribution box. Otherwise, it may result in electric shock or product failure.

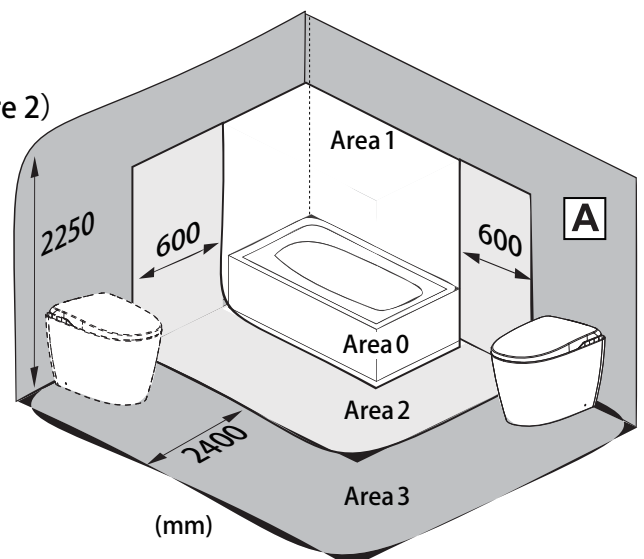
The people suffering from physical, perceptual and intellectual disorders or lack of experience and common sense (including children) shall use this product under the supervision of their guardians.

Children shall not play with the product

• Otherwise, it may result in scald, electric shock, fire and personal injury.



( Figure 2 )





The product should be installed against the wall in accordance with the instructions.

Do not use the product when the body is loose

- Otherwise, the body may fall off, resulting in personal injury.

Do not touch the damaged part

- Otherwise, it may result in electric shock or personal injury. Please replace it as soon as possible.

Violent impact shall be avoided, and do not stand or place heavy objects on the seat, lid or body

- Otherwise, the product may be damaged and the body may fall off, resulting in personal injury.

- Otherwise, it may cause product damage and result in injury or seepage.

Do not lift and pull the product by holding the seat or lid; When items are placed on the toilet, do not lift the seat and the lid.

- Otherwise, the body may fall off, resulting in personal injury.

Please use diluted kitchen cleaning agent (neutral) to clean plastic parts (body, etc.) and water inlet hose. Do not use the following substances

Squatting pan cleaning agent, house cleaning agent, gasoline, banana oil, cleanser powder and nylon brush, etc.

- Otherwise, the plastic parts may be damaged, causing cracks and resulting in personal injury or product failure.

- Otherwise, the inlet hose may be damaged, resulting in leakage.

To prevent sudden water leakage, do not remove the inlet filter with the angle valve open.

- Otherwise it may result in water squirting. (Please refer to the cleaning method of inlet filter on page 18)

Do not bend or damage the inlet hose

- Otherwise, it may result in leakage.

Do not pour hot water into the toilet

- Otherwise, it may cause toilet damage and result in injury or seepage.

Do not flush substances other than feces and urine, or large amounts of toilet paper with the toilet.

- Otherwise, the toilet may be clogged, resulting in sewage overflow and seepage.

In case of leakage, make sure to close the angle valve

Do not use the product in an environment below 0°C

- Frozen inlet hose may damage the toilet body or pipe and result in water leakage.

- To prevent the pipes or hoses from frozen and damage during cold seasons, room temperature shall be properly adjusted and controlled.

When the toilet is not in use for a long time, please make sure to close the angle valve, drain the toilet body and the inlet hose completely, and turn off the power supply of the distribution box.

When use the toilet after long-term idling, connect the toilet to water supply first before use.

- Otherwise, it may result in dermatitis due to water deterioration.

- Leaving the power on all the time may result in fire or overheating accidents.

For inlet filter installation, make sure it is tightly screwed in place.

- Insufficient tightened may result in water leakage.

When the toilet is clogged, disconnect the circuit breaker of the distribution panel and remove blockages.

- Otherwise, the automatic toilet cleaning function enabled may result in sewage overflow and water seepage.

- Unclog the toilet with commercially available unclogging tools.

Flush the toilet after urinating

- Otherwise, the toilet may be clogged, resulting in sewage overflow and seepage.

Wipe urine, dew, detergent, water, etc. splashing on the floor with a dry cloth

- Otherwise it may result in stains on or corrosion of the floor.



To prevent maloperation

- Do not cover the human detection sensor and remote control signal receiving and transmitting parts (for remote control model).

- Do not place any object on the seat sensor.

About seat sensor

- When a man sits on the toilet seat, the seat occupied switch will be closed, and all functions can work normally.

- Please sit as far back as possible on the toilet seat. When sitting in the front, the seat occupied switch may not be closed.

- ※ If a children seat in the front of the toilet seat, the sensor may unable to detect the children.

To prevent scratches and breakage

- A soft cloth that has been wet and wrung out completely shall be used to wipe toilet body and plastic parts such as the remote control (for remote control model).

- Do not lean against the toilet lid.

- Sticking double-faced adhesive tape or other sticky materials on the surface of the product is prohibited. Otherwise, the surface may be damaged.

To prevent fault!

- In thunderstorm days, make sure to turn off the power supply of the distribution box in advance.

- Protective cover for toilet seat and toilet lid shall be removed, otherwise, it may result in detection failure of human sensor or seat occupied sensor.

- Do not splash urine on the toilet body and nozzle; otherwise, it may result in failure or discoloration.

- Do not violently hit or press on the remote control.

- If the detergent for toilet cleaning is used, the detergent shall be rinsed out within 3 minutes, the toilet seat and toilet lid shall be maintained opened, and residual detergent in the toilet shall be wiped out, otherwise, the vaporized gas contained in the detergent may enter the toilet body and result in failure.

- Do not use the product with the lid removed.

- Exposure to direct sunlight shall be avoided; otherwise, it will result in discoloration or uneven temperature of thermostatic toilet seat, failure of remote control (for remote control model), and malfunction of toilet body due to temperature variation.

- Do not use the radio near the product, for it may interfere with radio waves and produce noise.

- If a child toilet seat or a soft heightening toilet seat is placed on the toilet seat, make sure to remove the such parts from the toilet seat after use. Using the toilet with this auxiliary part installed may disable some functions.

- Hitting the remote control (for remote control model) hard shall be avoided for it may result in failure.

- To avoid remote control falling off, please hang the remote control on the bracket when not in use (for remote control model).

- Keep out of water.

- Do not place items on the toilet seat or the toilet lid, or press the seat sensor by hands, otherwise, the seat occupied switch may be switched on, and if the key on the remote control is pressed, warm water will spray from the nozzle onto the floor and the object.

## Watch out for low-temperature burns



Improper use of thermostatic toilet seat may result in low-temperature burns.

Contacting the same position of the skin with the lowest temperature (33°C) may cause low-temperature burns, therefore, the toilet seat heating function will be disabled automatically after being occupied for 1 hour.

Please refer to "Functions of Remote Control" in the Instructions for seat temperature adjustment.

When the thermostatic toilet seat and warm air drying functions are used under the following circumstances, the guardian shall set the toilet seat temperature to 「OFF」 and the war air temperature to 「low」 .

- 1.When used by children, the elderly and other persons who cannot adjust the temperature to a suitable degree by themselves.

- 2.When used by the sick, the disabled and other persons with mobility disabilities.

- 3.When used by persons who has taken hypnotic drugs (sleeping pills, cold medicine, etc.), drunken men, excessive fatigue persons.



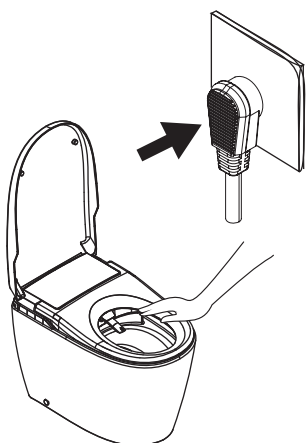
Product name		IN WASH INSIGNIA 2.0
Product model		A80314600C
Product configuration		Rear wash ,front wash, power saving mode,auto open lid ,radar sensor,hygiene flush pre-flushing, deodorizer, dryer, night light, UV light sterilization, IOT,water line sterilization
Rated voltage		110V~
Rated frequency		60Hz
Rated power		1150W
Power cord length		About 0.9m
Toilet	Water consumption	4.8/3.5 L dual flush
	Flush method	Siphonic jet
Cleaning	Rear wash	5-level adjustment
	Front wash	5-level adjustment
	Water temperature	6-level adjustment (including room temperature)
	Maximum Heater capacity	1600W (max.)
	Safety device	Water temperature sensor, earth protection, self-resetting temperature controller, non-self-resetting temperature controller, leakage protection plug
Seat heater	Surface temperature	6-level adjustment (including room temperature)
	Heater capacity	50W (max.)
	Safety device	Seat occupied sensor, temperature sensor, temperature fuse, temperature controller, leakage protection plug
Dryer	Dryer temperature	6-level adjustment (including room temperature)
	Heater capacity	290W (max.)
	Safety device	Thermal fuse, temperature controller, leakage protection plug, temperature sensor
Deodorization device		Cold catalyst deodorization
Water supply pressure		0.08MPa ~0.8MPa
Classification of waterproof		IPX4
Supply water temperature		3-35℃
Ambient temperature		0-40℃
Product size		Length: 673mm Width: 408mm Height: 480mm
Product weight		Net weight: About 43kg
Bacteriostat parts		Toilet seat, nozzle, ceramic
Color		White

The rated power of the product is the average power measured after powering on and starting up,with rear clean immediately started and maintained for 1 washing cycle, with the seat temperature, the rear clean water temperature and rear clean flow set to the maximum level (with pulsating wash and oscillating wash disabled,and the cleaning time set to default value i.e..300s),and under the conditions of an ambient temperature of 23±1℃ and a water pressure of 0.2MPa and an inlet temperature of 15℃.

If the inlet temperature exceeds the above range the outlet temperature from the nozzle may be unstable.

The manufacturer reserves the right to modify the above specifications from time to time without further notice.

## Preparations before use



Please read over the Manual and use the product properly.

1. Check and confirm the product is installed properly

Check and confirm the porcelain part is installed properly

Open the cut off valve to fill water

2. Power connection

Connect the power plug of the product (check and confirm the supply voltage is 110V~, 60Hz)

After the installation, the indicator lights up after energized indicate that the power supply is connected.

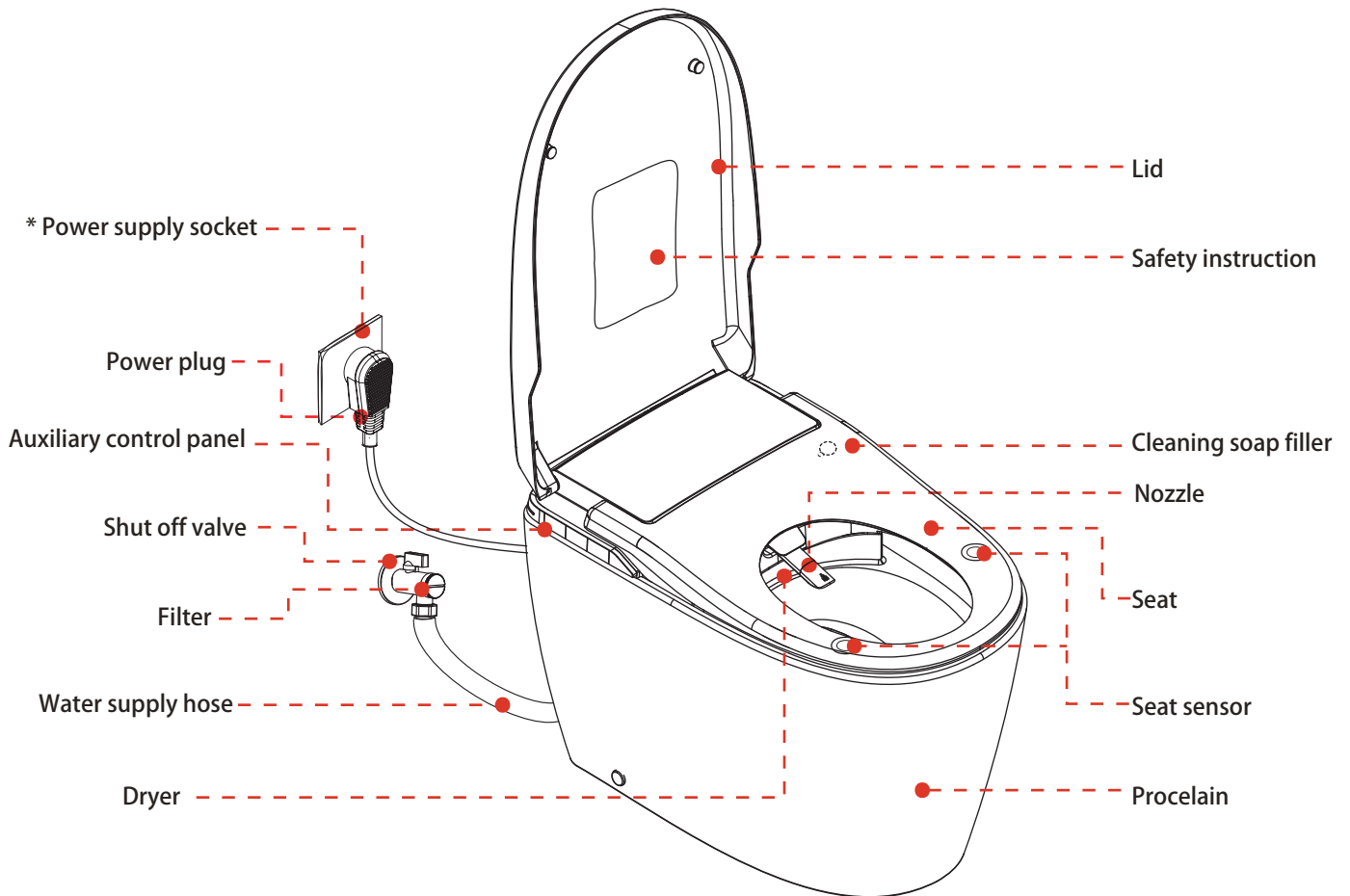
3. Main functions testing

To test this function, place the transparent cover and press down on the designated position to simulate the seat occupied state.

Notes:

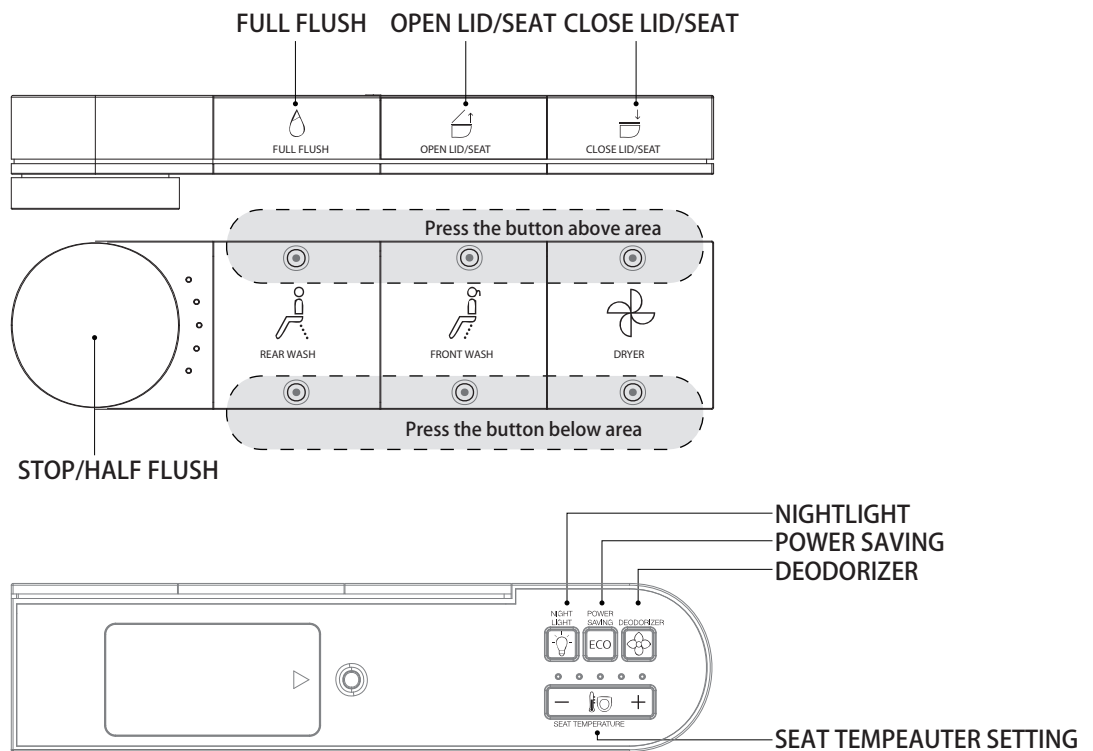
If the function cannot be enabled please refer to "Troubleshooting" in the Manual

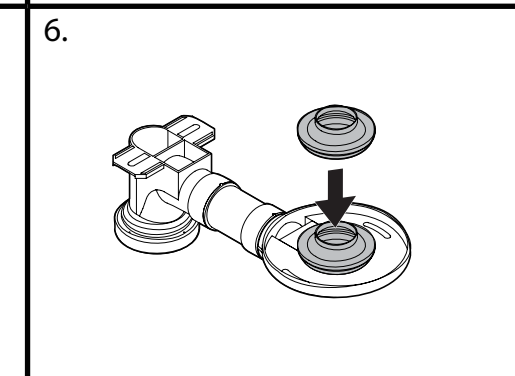
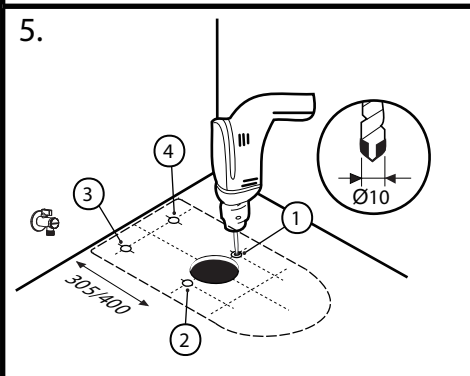
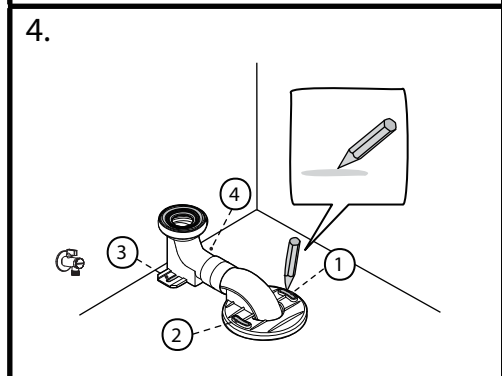
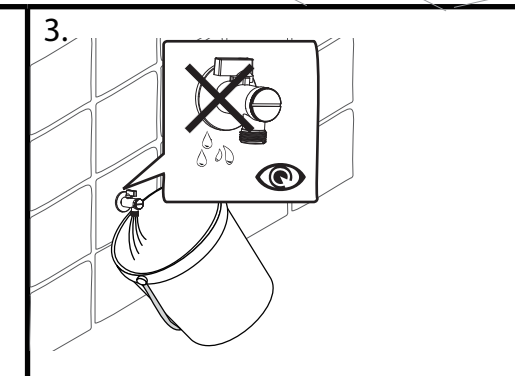
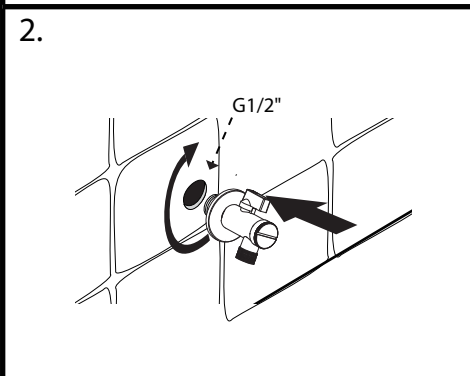
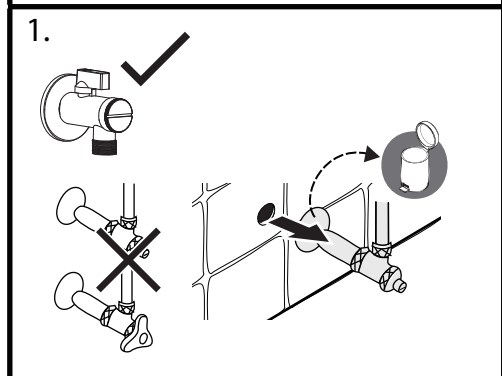
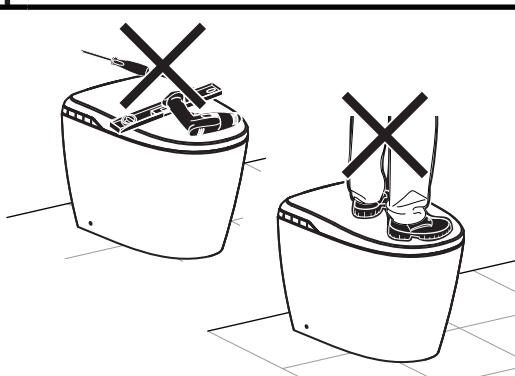
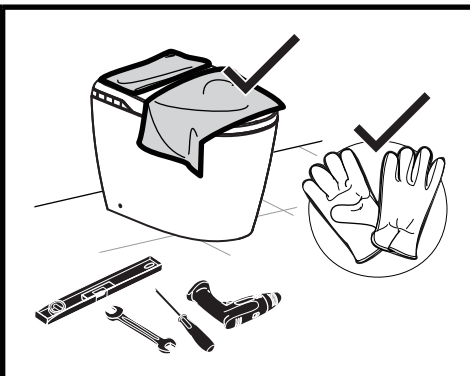
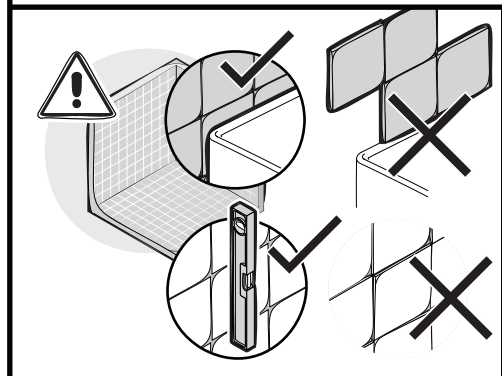
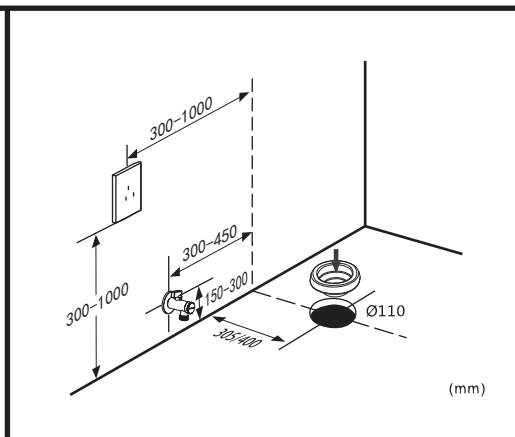
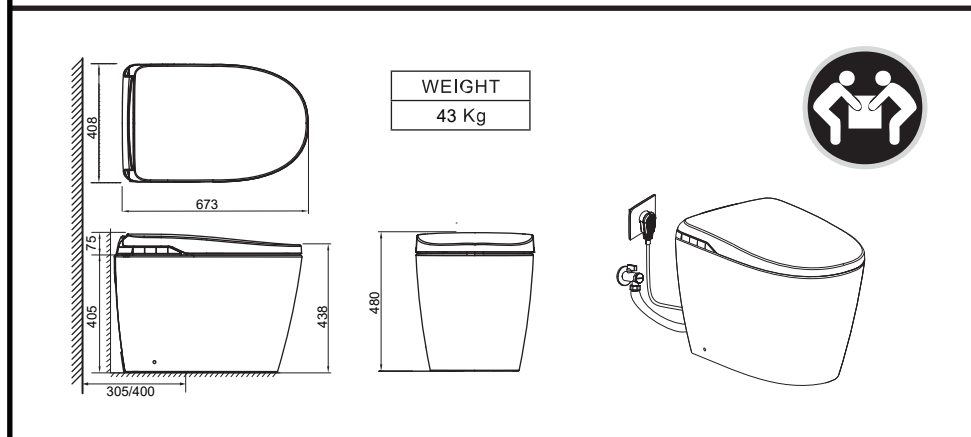
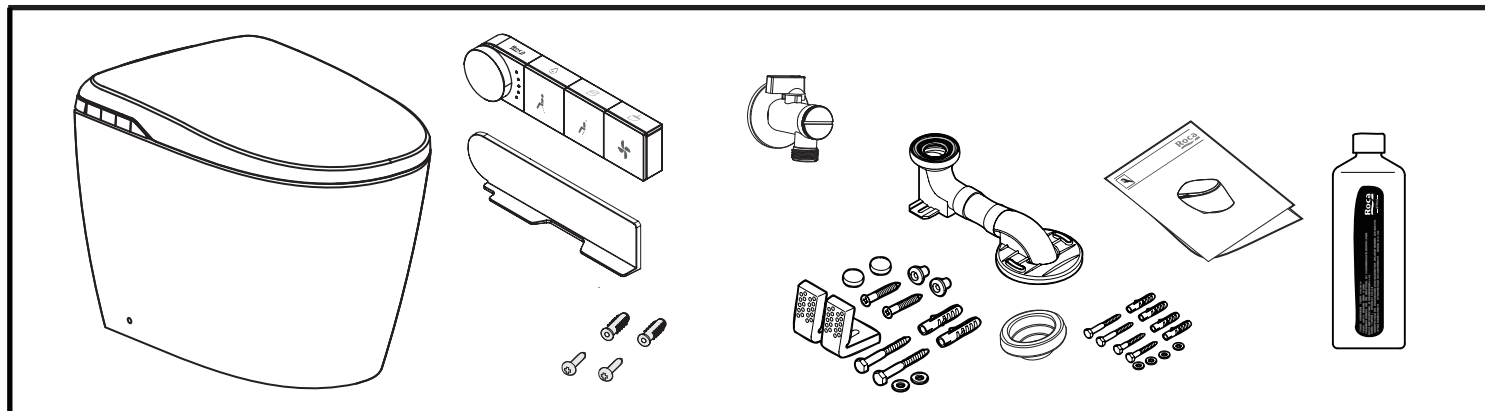


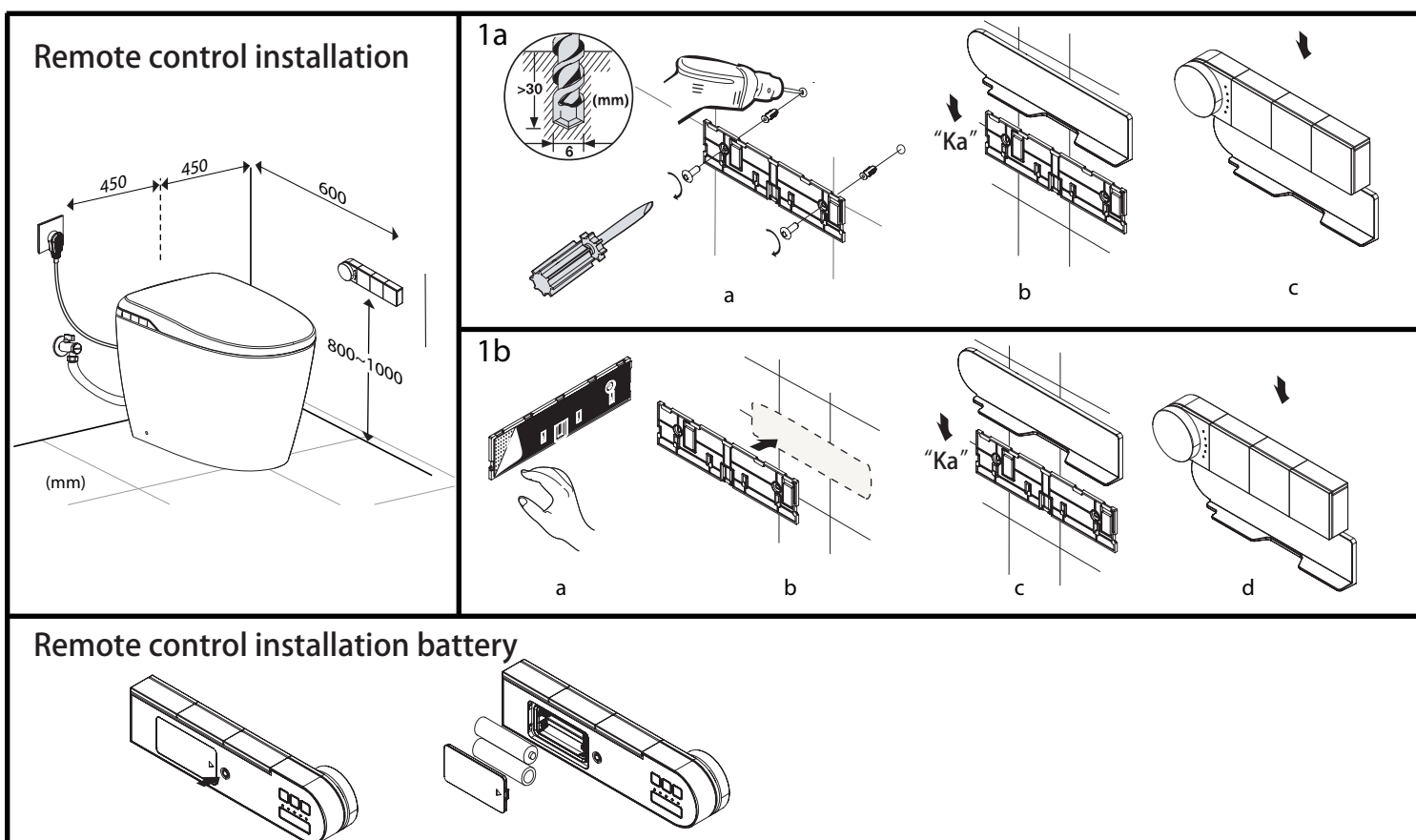
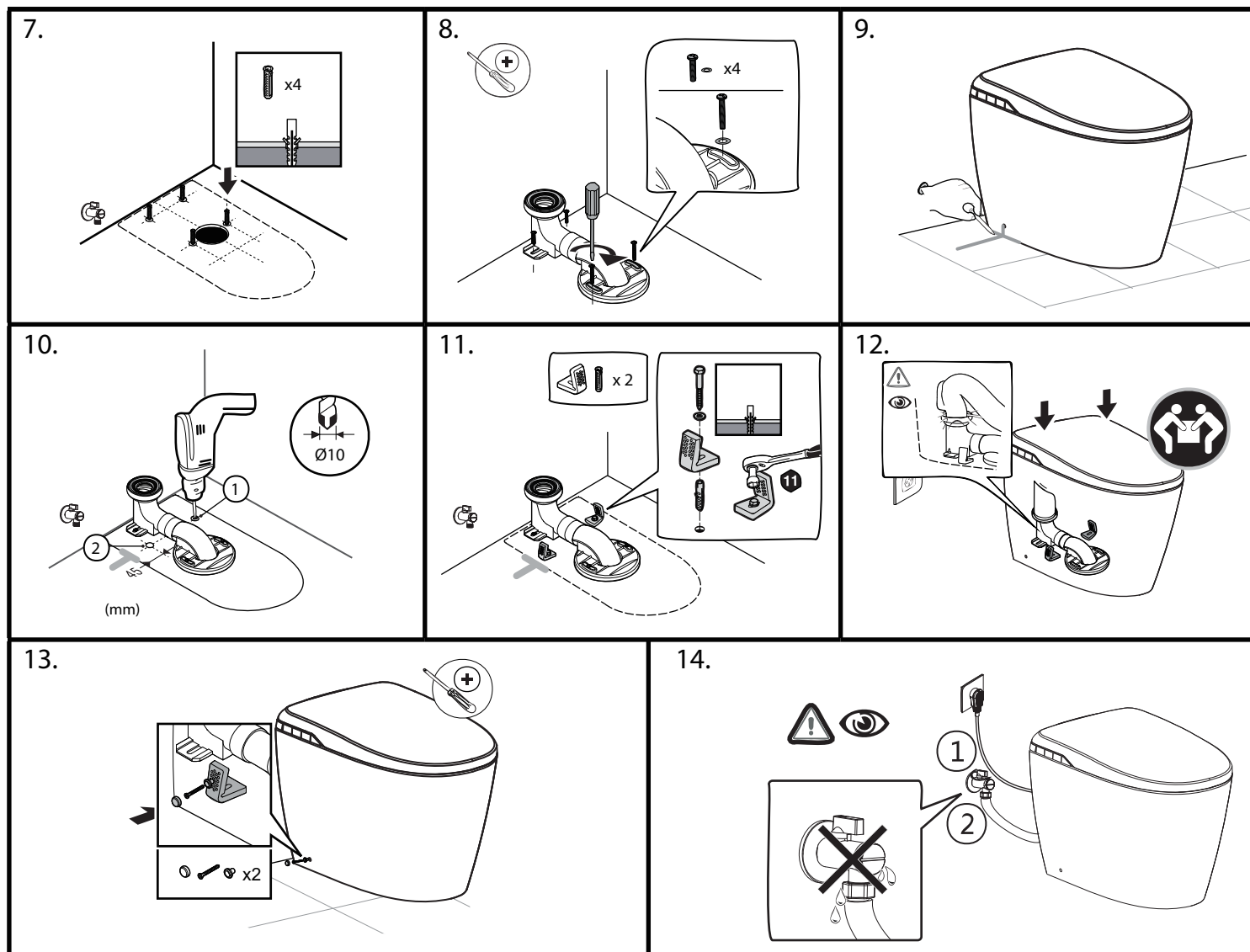


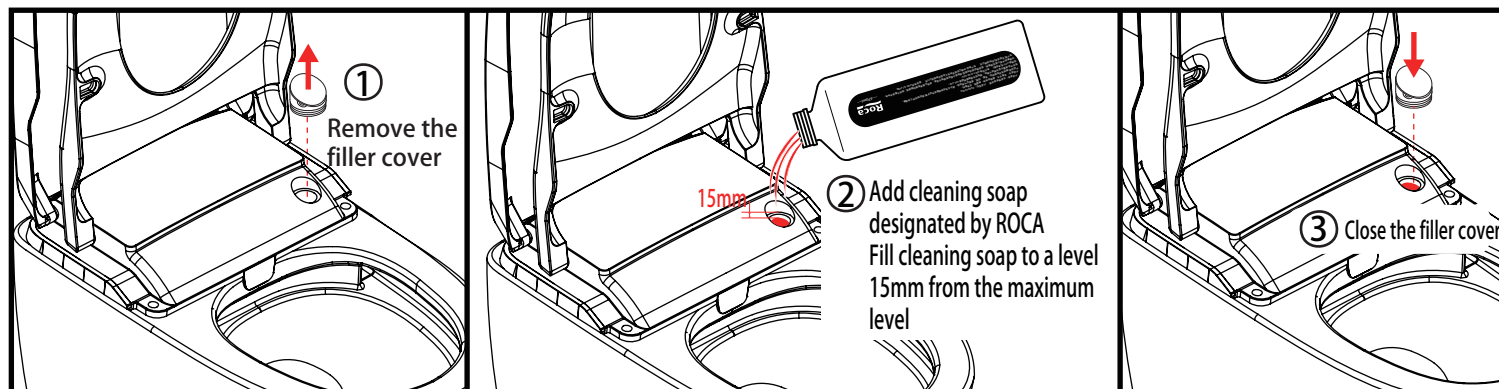
Shut off valve, water supply hose, etc. are included, and items marked with " \*" are not included.  
Photos are for reference only!

## Remote control









## Remote control function

### Auto open distance setting(Press these 2 buttons at the same time)

Press rear wash up/down buttons to switch the radar sensing distance

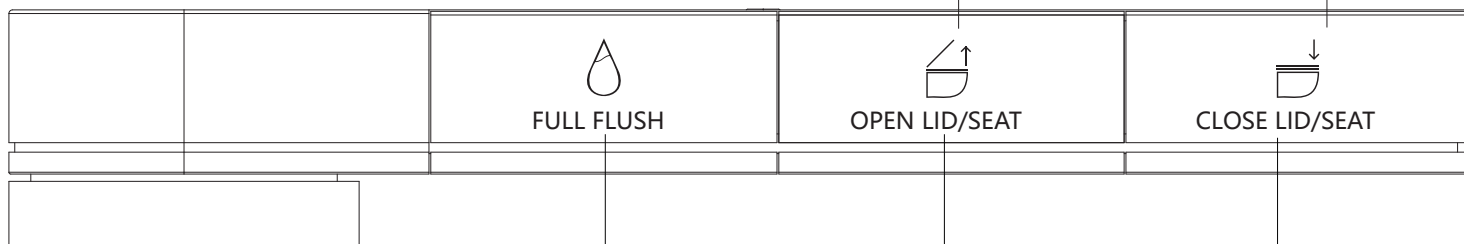
Radar sensing distance about 40CM ●○○○○

Radar sensing distance about 60CM ●●○○○

Radar sensing distance about 80CM ●●●○○

Radar sensing distance about 100CM ●●●●○

Radar sensing distance about 120CM ●●●●●



#### • FULL FLUSH

Press the button to start the full flush function

#### • HYGIENE FLUSH

Press and hold 3 seconds the " FULL FLUSH " to start the hygiene flush function

#### • Auto Flush function switch

Press full flush & stop button together and hold for 3 seconds

Press rear wash up/down buttons to switch flushing mode

##### •RADAR & SEAT SENSOR FLUSH OFF

Knob LED light off ○○○○○

##### •RADAR SENSOR FLUSH

Knob LED light on ●○○○○

##### •SEAT SENSOR FLUSH

Knob LED light on ●●○○○

Toilet will automatically activate full or half

flushing based on the duration of occupying the seat.

15-60 seconds half flush

>60 seconds full flush

#### • OPEN LID/SEAT

Press the button open lid/seat

#### • AUTO OPEN/CLOSE LID

Press and hold 3 seconds

•Auto open/close Lid function off

Knob LED light off ○○○○○

•Auto open/close Lid function on

Knob LED light on ●●●●●

#### • CLOSE LID/SEAT

Press the button to start the close lid/seat function

#### • AUTO OPEN OR CLOSE LID/SEAT

Press and hold until LED light blink, loosen the button

•Auto open or close Lid/Seat function off

Knob LED light off ○○○○○

•Auto open or close Lid/Seat function on

Knob LED light on ●●●●●

#### • LID /SEAT AUTO CLOSE TIME

Press and hold until LED light always on, loosen the button. Adjust Lid/Seat automatic closing time.

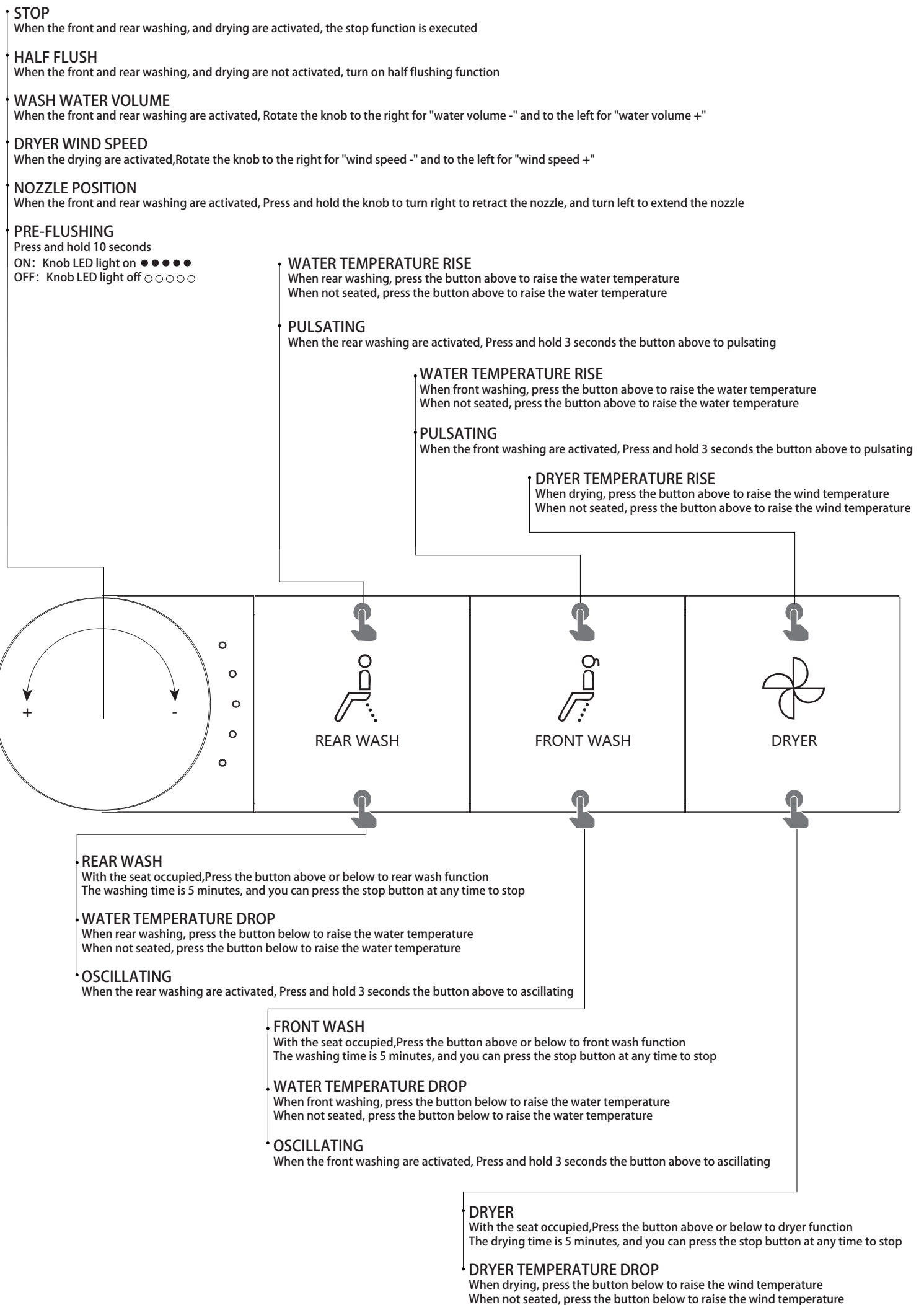
Press rear wash up/down buttons setting time (30-60-120-180 seconds):

●○○○○ 30 seconds

●●○○○ 60 seconds

●●●○○ 120 seconds

●●●●○ 180 seconds



## Nightlight /Background light

Press remote button switch light mode

Nightlight on:Background LED light on ●○○○○

Background light on:Background LED light on ●●○○○

Nightlight+Background light on:Background LED light on ●●●○○

All light off:Background LED light off ○○○○○

## Auto Nightlight+Background light

Press and hold until LED light blink, loosen the button

Nightlight+Background light on:Background LED light on ●●●●●

Nightlight+Background light off:Background LED light off ○○○○○

## Timing night light

Press and hold until LED light always on, loosen the button

Press the seat temperature button "+", Increase the duration of automatic nightlight activation,

Press the seat temperature button "-", Reduce the duration of automatic nightlight activation

There are 5 adjust able periods of time (the background LED lights up corresponding to the duration of activation):

Timing light off ○○○○○

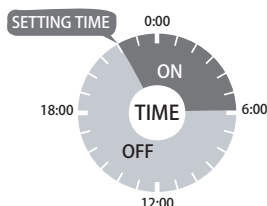
On 4 hours ●○○○○

On 8 hours ●●○○○

On 12 hours ●●●○○

On 16 hours ●●●●○

On 20 hours ●●●●●



Example:

Select 8 hours starting from now on(example: 22:00pm).The night light will be activate daily from22:00pm to 6:00am.

## POWER SAVING

Power saving on:Background LED light on ●●●●●

Power saving off:Background LED light off ○○○○○

## MUTE

Press and hold 3seconds

Mute on : Background LED light on ●●●●●

Mute off: Background LED light off ○○○○○

## DEODORIZER

ON/OFF the deodorizer function

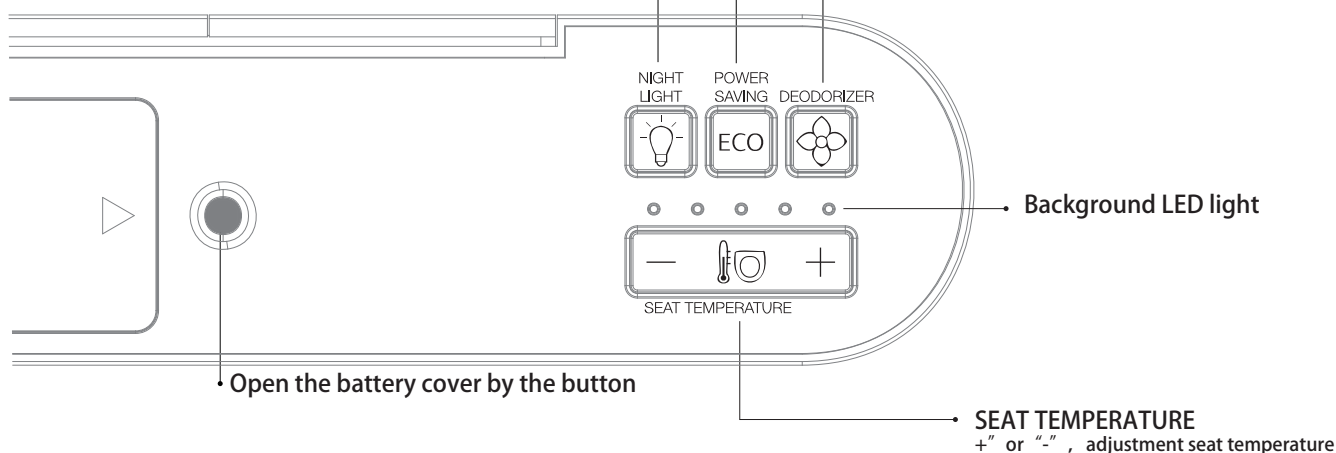
## AUTO DEODORIZER

Press and hold 3seconds

Auto deodorizer will automatically activates once the toilet seat is occupied and it wil automatically switches off while the toilet seais not occupied for more than iminute

Auto deodorizer on:Background LED light on ●●●●●

Auto deodorizer off:Background LED light off ○○○○○



## Toilet and remote control pairing

Before pairing, confirm that the toilet is disconnected from the power supply and the remote control does not have a battery installed

1. Install the battery on the remote control, press and hold the knob, and then wash the up and down buttonsfor more than 3 seconds.

The indicator light on the remote control knob will flash slowly;

2. The toilet is powered on, and after self checking, the remote control knob light flashes rapidly.

At this point, the toilet has successfully paired with the remote control.



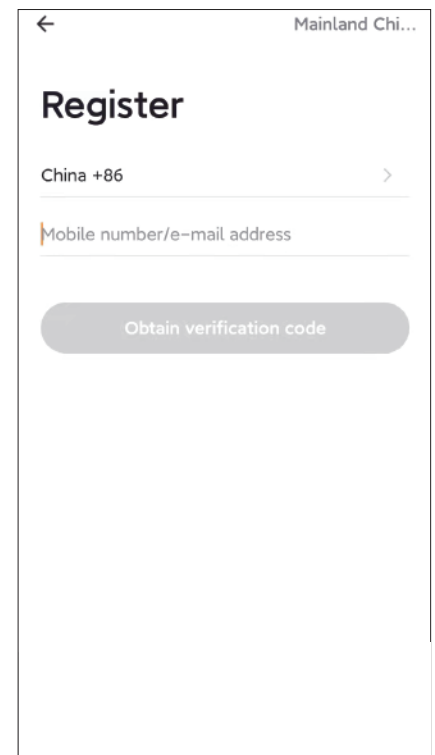
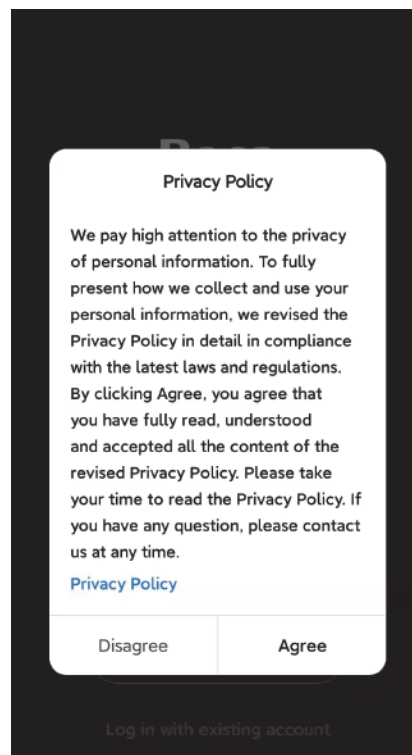
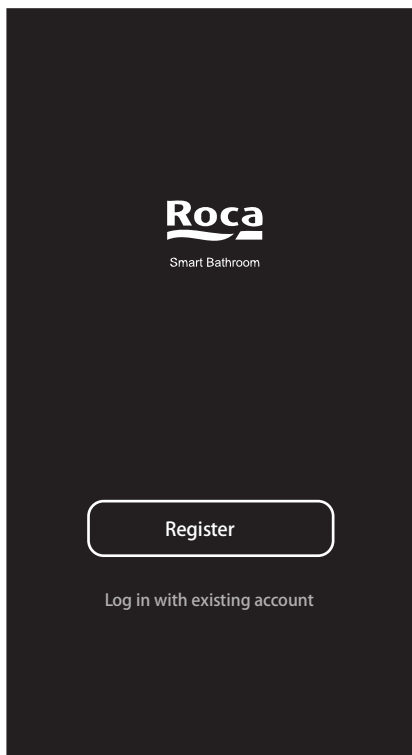
1,Download Roca Smart Bathroom APP




or Scan QR code



2,Click “Register” , Click Privacy policy “Agree” , Use mobile phone number or email address to complete registration.





Make sure that the mobile phone is connected to the WIFI network in 2.4GHz band, and hear the device "drip" when the purchased smart device is powered on. When you are not seated, press and hold the button "  "on the side of the toilet and wash it for 3 seconds. When you hear the equipment "drip", the nightlight flashes at the same time as the atmosphere light. At this time, the toilet enters the distribution network state.

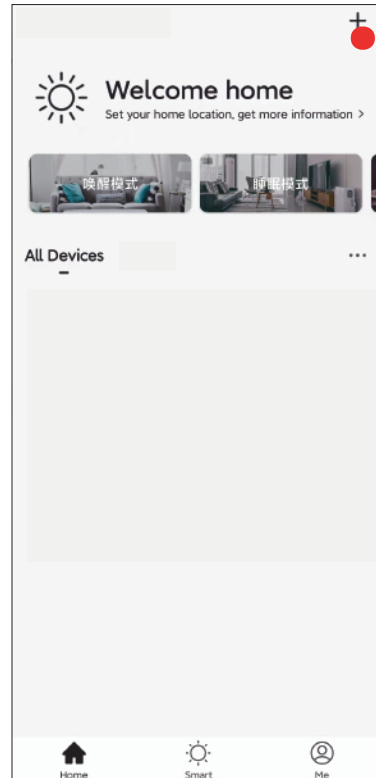
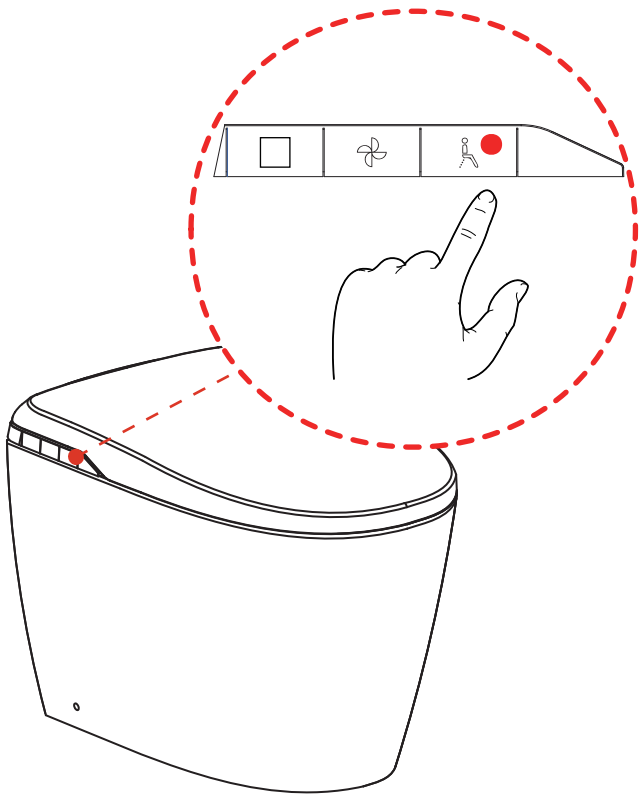


Figure 1

Click "+" in the upper right corner of APP (Figure 1); Select the device icon you purchased (Figure 2); Wait for pairing to succeed. Appears after successful pairing. Online status of equipment (Figure 3); If you need to control smart devices, please click the device icon in Figure 3 to enter the control interface (Figure 4).

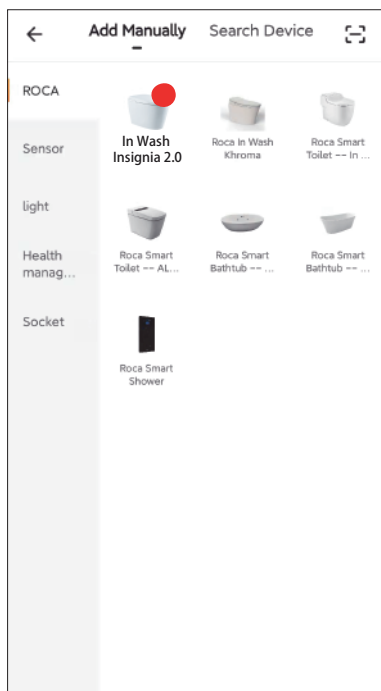


Figure 2

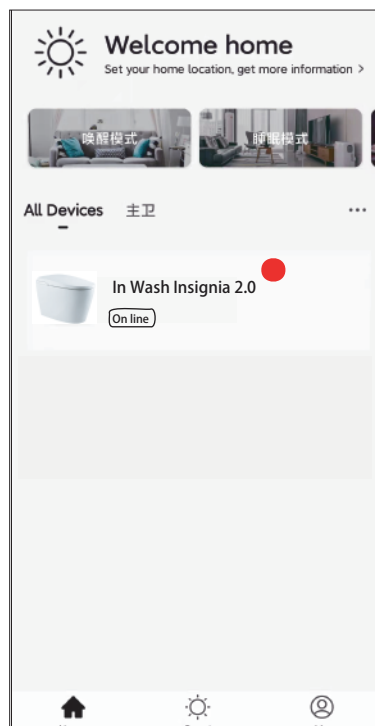


Figure 3

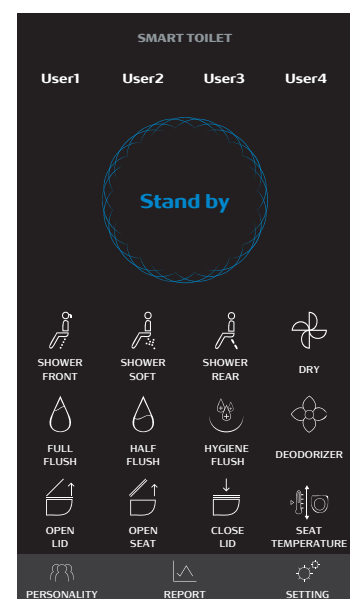
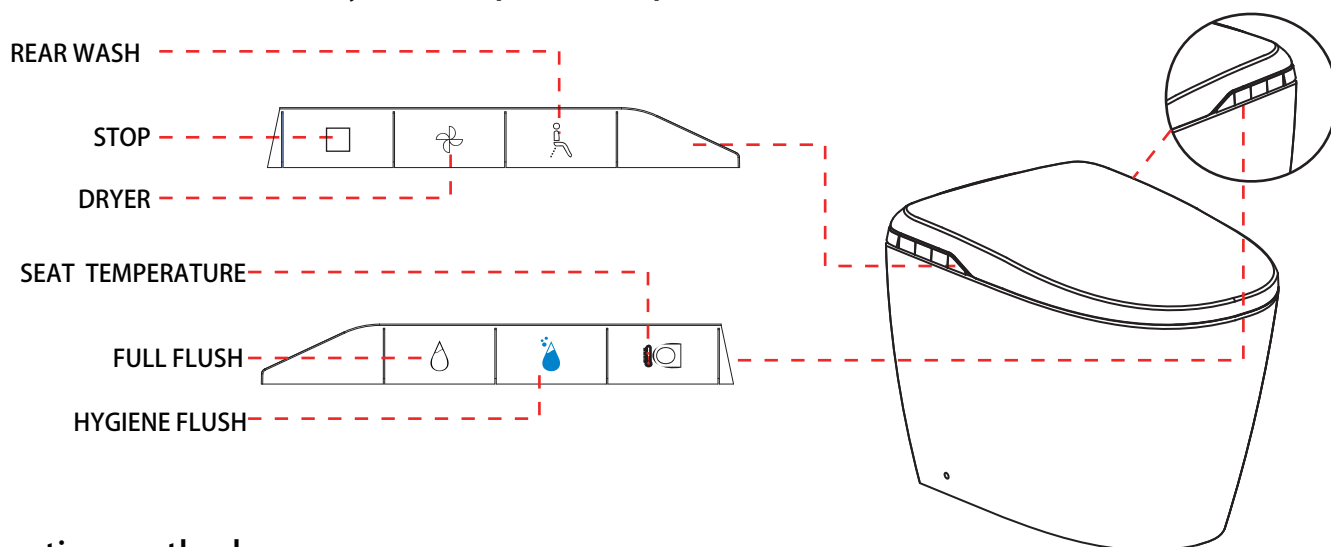


Figure 4

## Users can use this auxiliary control panel to operate main functions



### Operating method

**STOP**  
When the toilet is turned on and is in the washing drying or nozzle cleaning state, press the "□" button to stop the current function



**FULL FLUSH**  
Press the "FULL FLUSH" button to start the full flush

**DRYER**  
With the seat occupied, press the "DRYER" button to start the dryer function



**HYGIENE FLUSH**  
Press the "HYGIENE FLUSH" button to start the hygiene flush function

**REAR WASH**  
With the seat occupied, press the "REAR WASH" button to start the shower rear function.



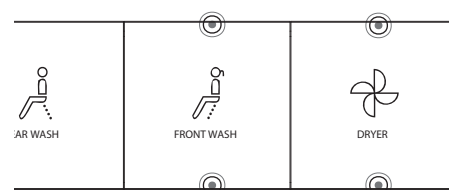
**SEAT TEMPERATURE**  
Press the "SEAT TEMPERATURE" button to start the seat heating function

### Default

Operation method: In the power on state, press and hold the 4 keys on the remote control for 3 seconds, and hear a "beep" sound from the toilet buzzer, indicating that the factory settings have been successfully restored. Operating method When restoring factory settings in the system

After restoring factory setting the level settings are as follows

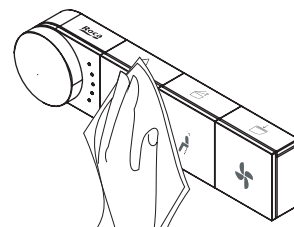
Seat temperature	OFF	Dryer wind speed	3 Level
Drying temperature	OFF	Auto deodorizing	OFF
Water temperature	OFF	Night light	OFF
Front wash volume	3 Level	Auto open lid	OFF
Rear wash volume	3 Level	Auto flush	ON
Position front & rear wash nozzles	3 Level	Auto UV light	ON
Pulsating	OFF	Mute mode	OFF
Oscillating	OFF		



**Caution:** After restoring factory settings, operate the remote control, the toilet will exit the default settings and apply the settings set on the remote control.

## Remote control cleaning

1. Moisten a soft cloth with water, wring it out, and wipe the remote control gently.
2. If the remote control is too dirty, diluted neutral detergent for kitchen use can be used for wiping.

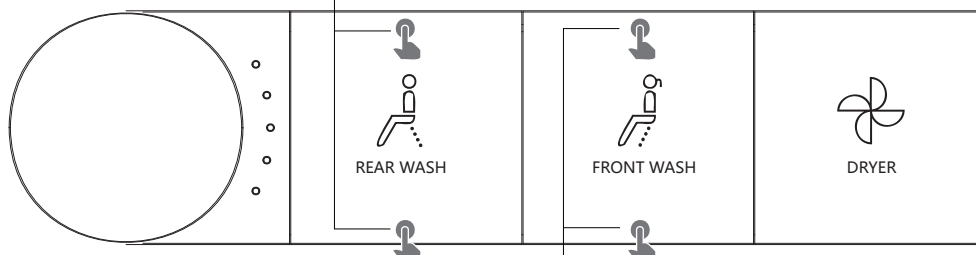


**WARNING!**  
Rinsing the product directly with water or cleaning agent is prohibited!

## Nozzle cleaning

### NOZZLE EXTENSION

When not seated, Press and hold 3 seconds the button below to nozzle extension  
Automatically stop after 1 minute



### NOZZLE CLEANING

When not seated, Press and hold 3 seconds the button below to nozzle cleaning  
Automatically stop after 1 minute

<p><b>1 Stretching nozzle</b></p> <p>When not seated, Press and hold 3 seconds the button below to nozzle extension</p>	<p><b>2 Cleaning nozzle</b></p> <ul style="list-style-type: none"> <li>- Clean with a soft brush or a toothbrush.</li> <li>* Do not pull or push the nozzle forcibly, otherwise, it may result in nozzle damage or failure.</li> </ul>	<p><b>3 Nozzle to original position</b></p> <ul style="list-style-type: none"> <li>- Press the "Stop" button on the remote control or on the side of the toilet, to return the nozzle to the home position.</li> <li>- The nozzle will return to the original position in 1 minute.</li> </ul>
---	--	--



**WARNING!**  
Do not use strong detergent to clean the nozzle, use neutral detergent.  
Do not force the nozzle out or in.  
Do not pull the nozzle out by hand.



## Clean the filter

When the water pressure decreases during washing, please clean the filter.

<p><b>1 Close the angle valve</b></p> <p><b>Caution</b> Removing the filter with the water valve opened is prohibited. - Water will squirt out.</p>	<p><b>2 Remove the filter</b></p> <p>Remove the filter by turning it counterclockwise</p>	<p><b>3 Clean</b></p> <p>Disassemble the filter, and clean and remove dirt on the filter.</p> <ul style="list-style-type: none"> <li>* Dust should be cleaned and removed with toothbrush and other tools.</li> <li>* Dust or deposits inside the cut-off valve should be cleaned with a cloth.</li> </ul>	<p><b>4 Reinstall the filter</b></p> <p>Reinstall the filter by turning it clockwise.</p> <p><b>Caution</b> The filter must be tightened. - otherwise it may result in leakage</p>
---	---	--	--

## Preventive measure

If you are not going to use the product for a long time, make sure

1. to disconnect the power plug from the wall socket.
2. to cut off the water supply.

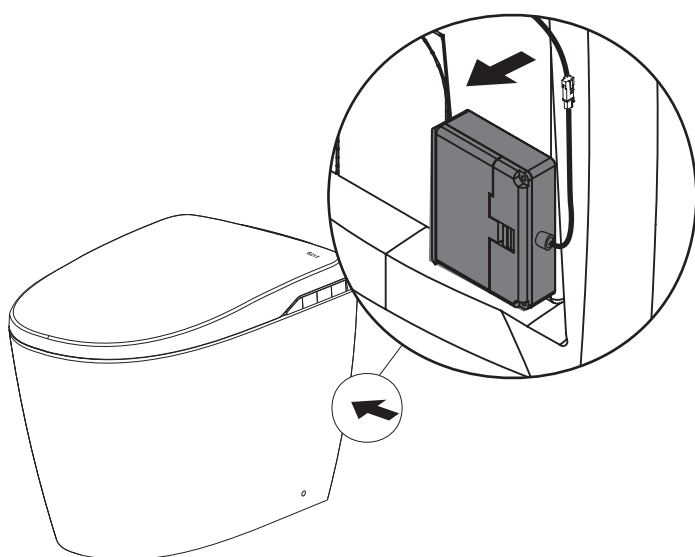


1. Do not forcibly remove any part of the product.
2. Please cut off the power supply in rainstorm weather.
3. After water pipelines maintenance, please open the water valve to clean all water pipelines.

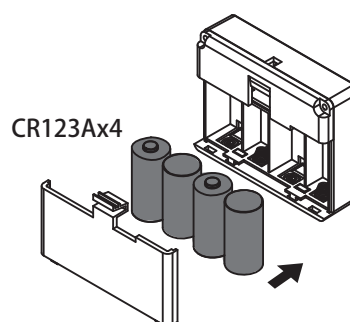
SN	Troubles	Causes	Solutions
1	Startup failure	1.Connection is cut off/power supply is not connected 2.No power supply	1.Connect the product 2.Check another product using 110V~ power supply (such as hair dryer) (see page5)
2	Small water flow or low water pressure	1.The filter is blocked 2.The hose is twisted 3.The washing nozzle is clogged	1.Clean the filter 2.Straighten the hoses 3.Clean the nozzle (see page 18)
3	Nozzle failure to work normally	1.The nozzle is dirty 2.The filter is blocked 3.The water pressure is too low	1.Clean the nozzle (see page 18) 2.Clean the filter
4	Cleaning function failure or water spraying failure	Users do not sit properly	Adjust the sitting position
5	Washing stop in the mid way	1.Washing timeout 2.Power supply failure	1.Repeat the washing operation 2.Check the power supply or disconnect the power cord and restart the toilet
6	Seat heating failure	1.The toilet seat temperature setting is disabled 2.Sit on the toilet for a long time	1.Reset the seat temperature 2.Stand up for a while
7	Water heating failure	The water temperature setting function is disabled	Reset the water temperature
8	Remote control failure	Battery runs out	Replace the batteries for the remote control.
9	Flushing failure	1.The filter is blocked 2.The installation process is not checked and confirmed	1.Clean the filter 2.Check and confirm the water pressure satisfies the installation requirement

## Emergency flushing battery installation

### 1,Take out the battery box

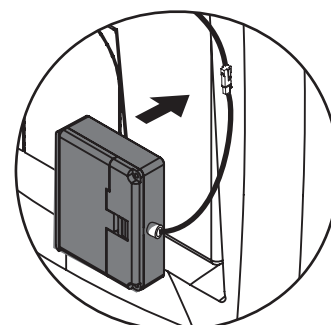


### 2,Installation the batteries(CR123Ax4)



Disable the charging

### 3,Installation the battery box



# Guarantee



This Product is guaranteed against any manufacturing defect provided they have been installed according to our instructions and current standards for electrical and sanitary installations.

Roca Sanitaryware guarantees this product for a period of 1 years from the purchasing day.

This guarantee does not cover possible damage caused by improper use: failure, breakage or damage as a result of rough handling or operation or for ignoring the instructions supplied with the unit.

Nor does this warranty cover possible damage caused by improper warehousing at job-site or by repairs performed with tools other than the original ones or by unauthorized personnel.

This warranty will not be effective unless the damage or fault is notified within the stated period of time.



ROCA BATHROOM PRODUCTS, INC  
11190 Nw 25th Street Suite 110  
Miami FL 33172  
Phone: +1(305)357-6110  
Site: [www.us.roca.com](http://www.us.roca.com)  
Customer Service: +1(305)849-2631  
Made in China

ZS847400301A 20250311