

JB Tag Solutions

Dongle description

JB Tag Solutions

Dongle description

08-NOV-2024

Document version 241108 1608

Index

1 Document log	3
2 Dongle description	4
3 Technical details:	4
4 PCBA	4
5 FCC Warning	5

1 Document log

Date YYMMDD	By	Document version	Action
241108	EdW	1	Start document

2 Dongle description

The dongle is an electronic communication device. It is connected to a host computer via USB. It is powered and communicates through USB with the host computer. It also communicates wirelessly using Bluetooth Mesh with other devices. It has a few status LEDs, one RGB status LED and a user button.

3 Technical details:

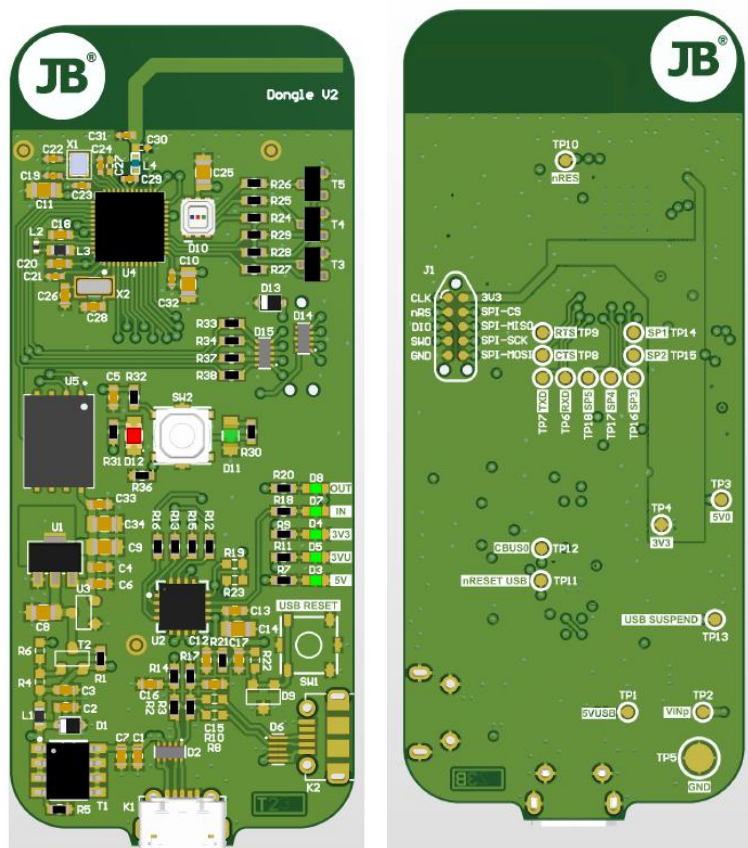
Power: 5V 500mA USB

Wired communication: USB

Wireless communication: Bluetooth Mesh

Used processor: Nordic nRF52832

4 PCBA



5 FCC Warning

This device complies with part 15 of the FCC Rules. Operation is subject to the following two conditions:

- (1) This device may not cause harmful interference, and
- (2) this device must accept any interference received, including interference that may cause undesired operation.

NOTE 1: This equipment has been tested and found to comply with the limits for a Class B digital device, pursuant to part 15 of the FCC Rules. These limits are designed to provide reasonable protection against harmful interference in a residential installation. This equipment generates, uses and can radiate radio frequency energy and, if not installed and used in accordance with the instructions, may cause harmful interference to radio communications. However, there is no guarantee that interference will not occur in a particular installation. If this equipment does cause harmful interference to radio or television reception, which can be determined by turning the equipment off and on, the user is encouraged to try to correct the interference by one or more of the following measures:

- Reorient or relocate the receiving antenna.
- Increase the separation between the equipment and receiver.
- Connect the equipment into an outlet on a circuit different from that to which the receiver is connected.

NOTE 2: Any changes or modifications not expressly approved by the party responsible for compliance could void the user's authority to operate the equipment.

RF EXPOSURE INFORMATION

This device complies with FCC radiation exposure limits set forth for an uncontrolled environment. This device should be installed and operated with minimum distance 20cm between the radiator & your body.