

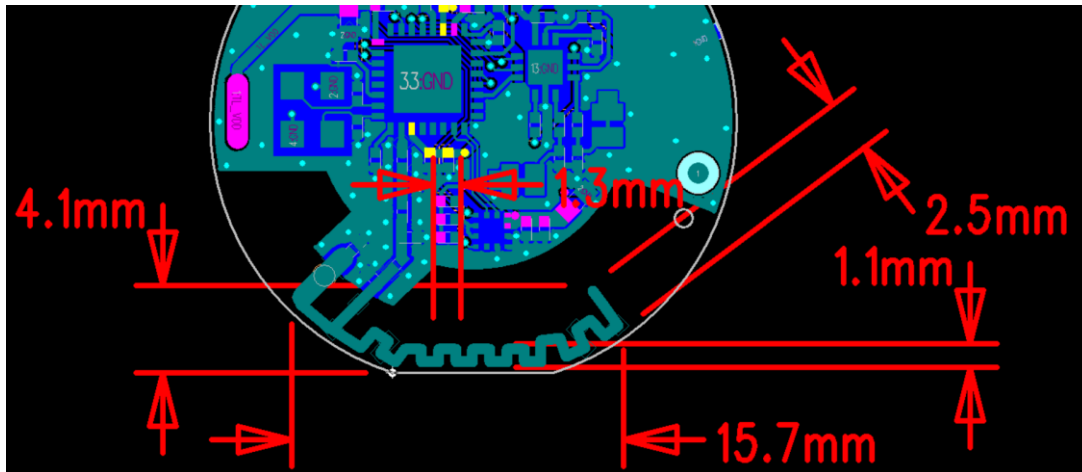
Product specification

Quick Reference Date

	Antenna module on the system board	
Frequenc Range	2400 ~ 2500GHz	
Ant. Port Input Pwr. (dBm)	0 (Typ. BT class 2 output power)	
Tot. Rad. Pwr. (dBm)	-5.4(Input pwr – loss pwr)	
Peak EIRP(dBm)	-5	
Directivity (dBi)	1 (all direction antenna)	
Efficiency (dB)	22.0%	
Gain (dBi)	-3 (Avg Gain XY-plane)	
Maximum Power (dBm)	-5(XY-plane)	
Minimum Power (dBm)	-6(XY-plane)	
Avg. Power (dBm)	5.4(XY-plane)	
Input Impedence(ohm)	50	
Polarization Type	V ertical & Horizontal	
V . S . W . R	≤ 2	

All the technical data and information contained herein are subject to change without prior notice

Antenna Layout & module on the system board

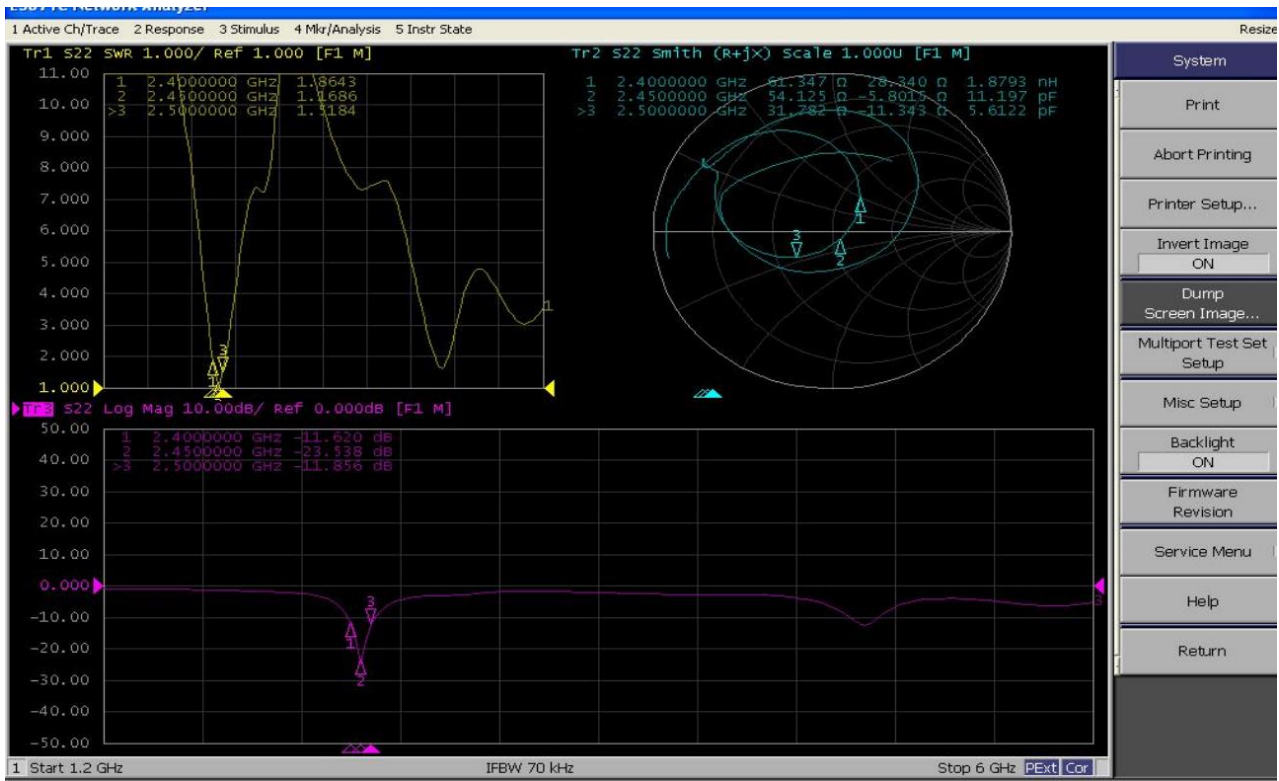


Antenna Gain

Gain Table

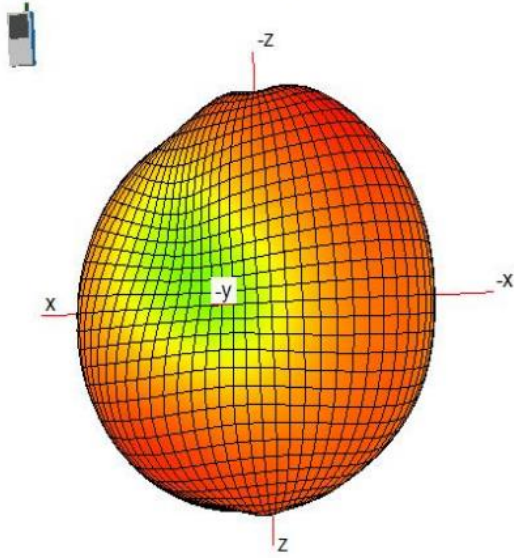
Unit in dBi @2.44GHz	XY-plane		XZ-plane		YZ-plane		Efficiency
	Peak	Avg.	Peak	Avg.	Peak	Avg.	
Module Board	-8	-9	-5	-6.2	-3	-4.3	20%

VSWR

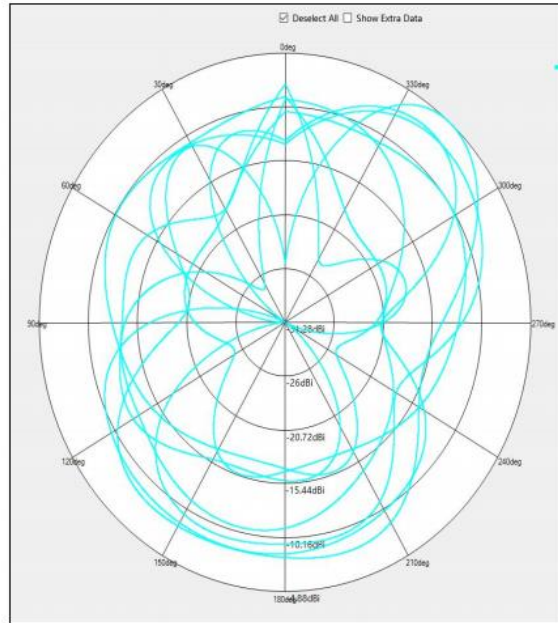


3D radiation pattern diagram

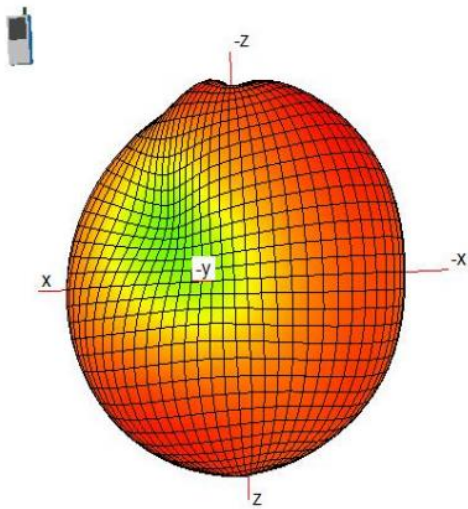
2400



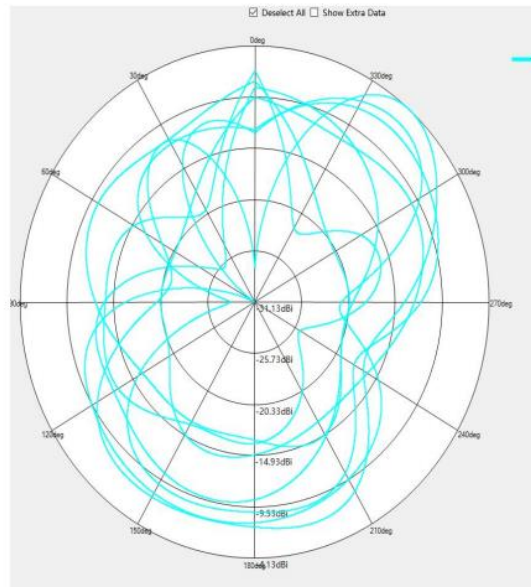
2400



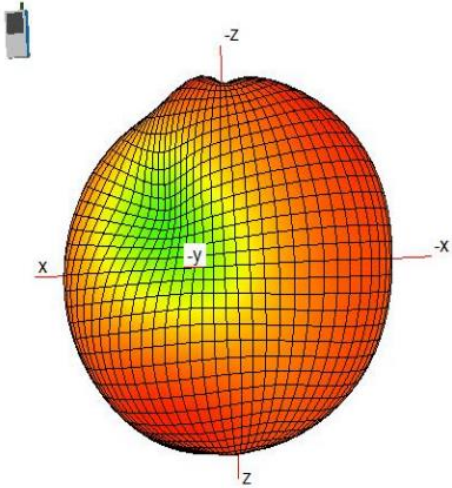
2450



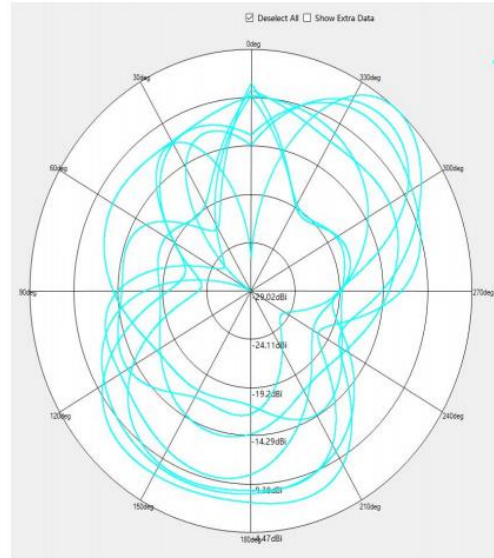
2450



2500



2500



Applicant Information: Shenzhen NEOECO Technology Co., Ltd.
Address: 12th Floor, Building 1, Daqian Industrial Plant, Zone 67, Xingdong Community, Xin'an Street, Bao'an