

XQG-N1/2.4G Wireless Page Turner Instruction Manual

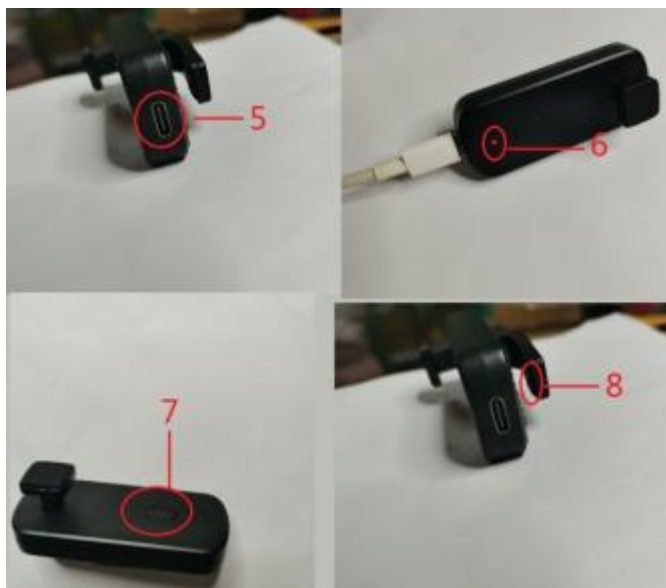
I: Remote Control (Transmitter)

1. Type-c Charging Connector
2. Indicator Light
3. Remote Buttons
4. Lanyard Port



II: Clips (Receiver)

5. Type-c Charging Port
6. Indicator Light
7. Power Button
8. Electrode Contact



III: Instructions for use

1. Charge the device before use

Connect the type-c charging cable to the remote control and clip charging port for charging. Red indicator light means charging in progress. Green light means full charge.

2. How to Use Remote Control (Transmitter)

(1) Power On

Press and hold the button for 2 seconds to power on the device and the indicator light is flashing blue. It transmits the communication code.

(2) Power Off

Press and hold the button for 5 seconds to turn on the device

(3) Automatic shut-down

If there is no key operation within 5 minutes, it will automatically shut down.

3. How to Clip (Receiver

(1) Power On

Press and hold the button for 2 seconds to power on the device and the indicator light is flashing blue. The electrode contacts will emit pulses to perform screen clicking operations.

(2) Power Off

Press and hold the button for 5 seconds to turn on the device

(3) Automatic shut-down

If there is no key operation or no communication code is received within 5 minutes, it will automatically shut down.

IV: Product Introduction

1. The product features a streamlined design that is novel and aesthetically pleasing.

It is compact and highly practical, making it an essential accessory for capacitive touch e-readers or smartphones.

2. It uses the universal 2.4G-ISM open frequency band, ensuring stable communication and high operational efficiency.

3. It comes with a built-in lithium battery for convenient use.

V: Product Specifications

1. 2.4G Frequency Range: 2402-2480 MHz

Transmission power: less than 11 dBm

2. Battery Specifications:

Remote Control: 3.7V / 600 mAh

Clip: 3.7V / 300 mAh

3. Dimensions:

4. Weight:

VI: Notes

1. This product is not suitable for children under 8 years old.
2. Please charge the product before using it if it has been stored for a long time.
3. Do not use the product in environments that are extremely cold, hot, dusty, or humid.
4. Do not use strong solvents to clean the product; please use a soft cloth and neutral detergent.
5. To protect your eyesight, it is recommended to limit each session of using electronic reading products to no more than 1 hour.

VII: Installation Guide

The electrode contact points should be installed approximately 3/4 of the way up from the bottom of the Kindle and extend about 10mm into the screen.

If you find that the page-turning function is not triggered, you can reposition the clamp (residual static electricity on the screen can interfere with the touch effect).



This device complies with part 15 of the FCC Rules. Operation is subject to the following two conditions: (1) This device may not cause harmful interference, and (2) this device must accept any interference received, including interference that may cause undesired operation.

Any Changes or modifications not expressly approved by the party responsible for compliance could void the user's authority to operate the equipment.

Note: This equipment has been tested and found to comply with the limits for a Class B digital device, pursuant to part 15 of the FCC Rules. These limits are designed to provide reasonable protection against harmful interference in a residential installation. This equipment generates uses and can radiate radio frequency energy and, if not installed and used in accordance with the instructions, may cause harmful interference to radio communications. However, there is no guarantee that interference will not occur in a particular installation. If this equipment does cause harmful interference to radio or television reception, which can be determined by turning the equipment off and on, the user is encouraged to try to correct the interference by one or more of the following measures:

- Reorient or relocate the receiving antenna.
- Increase the separation between the equipment and receiver.
- Connect the equipment into an outlet on a circuit different from that to which the receiver is connected.
- Consult the dealer or an experienced radio/TV technician for help.

FCC Radiation Exposure statement

The device has been evaluatec to meel general RF exposure requirement. The device can be used in porlable exposure condition without restriction.