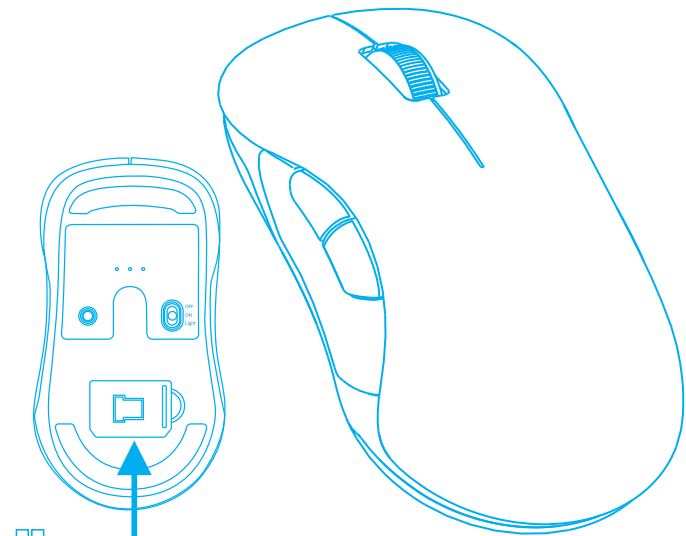


USER MANUAL

Wireless Mouse



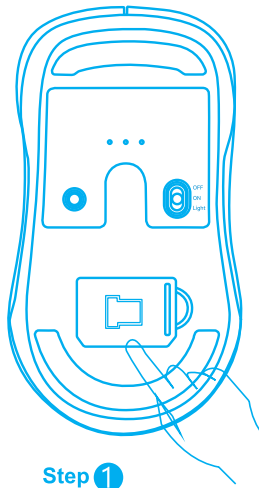
Here
USB
Receiver

CAUTION

Take out the USB Receiver from rear small compartment, insert it into USB port of a compatible computer.

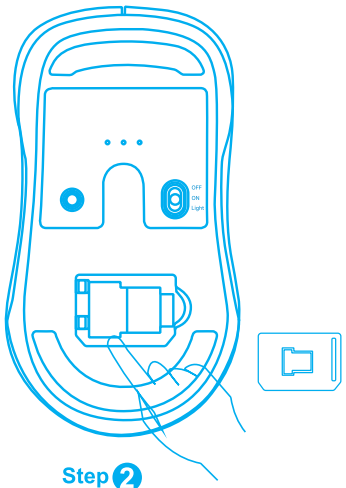
Obtain USB Receiver

- 1:When you use this RF 2.4GHz optical mouse, you can take out the USB Receiver from rear small compartment, and insert it into computer's USB Port as below step ①
- 2: When you stop the work or need to travel, you can store the USB Receiver inside the mouse for moving as below step ②



Step ①

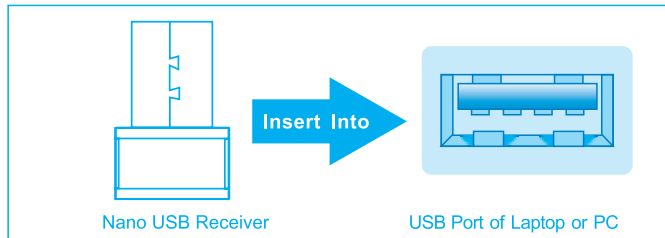
Take Out USB Receiver



Step ②

Store USB Receiver

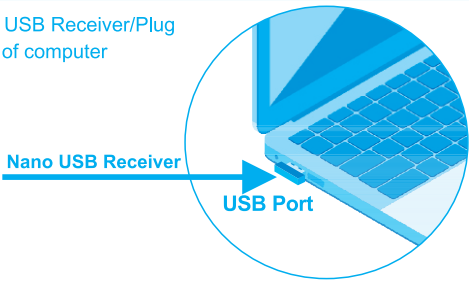
How to Connect USB Receiver



Nano USB Receiver

USB Port of Laptop or PC

Connect the USB Receiver/Plug to USB Port of computer



Nano USB Receiver

USB Port

Major Features

1. Support LED light mode/normal mode
2. Built-in battery: rechargeable LED mouse
3. Ergonomic design, suitable for both hands
4. Resolution:1200DP1
5. High precision optical engine
6. Compatible with Win 8/Win 10/Win11/MAC

Product Parameter

1. Battery Capacity :300mAh
2. Battery Voltage : 3.7V
3. Charging Voltage : 4.2V
4. Charging Time : 1.5H
5. Product Size : 5 x 2.75 x 1.57in
6. Product Weight : 3.17oz

Package Include

1 x Wireless Mouse, 1 x USB Receiver, 1 x User Manual, 1 x Type-C Cable,

Wireless Mouse

Model No.: WM-2017

Warranty Card

Dear Customer,

Thanks a lot for purchasing this item, hope that you could like this product, and we would like to provide our best after-service for you. If you have any problem in using this product, please do not hesitate to contact us, and we will reply within 6 hours to solve any problems.

We must solve your any problem in using this product item. Thanks a lot again for your support!



After-sales Email: memzuoix@163.com

Copyright and Design are Owned by memzuoix

memzuoix

Model No.: WM-2017

FCC Warning

This device complies with part 15 of the FCC Rules. Operation is subject to the following two conditions: (1) This device may not cause harmful interference, and (2) this device must accept any interference received, including interference that may cause undesired operation.

Any Changes or modifications not expressly approved by the party responsible for compliance could void the user's authority to operate the equipment.

Note: This equipment has been tested and found to comply with the limits for a Class B digital device, pursuant to part 15 of the FCC Rules. These limits are designed to provide reasonable protection against harmful interference in a residential installation. This equipment generates uses and can radiate radio frequency energy and, if not installed and used in accordance with the instructions, may cause harmful interference to radio communications. However, there is no guarantee that interference will not occur in a particular installation. If this equipment does cause harmful interference to radio or television reception, which can be determined by turning the equipment off and on, the user is encouraged to try to correct the interference by one or more of the following measures:

- Reorient or relocate the receiving antenna.
- Increase the separation between the equipment and receiver.
- Connect the equipment into an outlet on a circuit different from that to which the receiver is connected.
- Consult the dealer or an experienced radio/TV technician for help.

The device has been evaluated to meet general RF exposure requirement. The device can be used in portable exposure condition without restriction.