

Quick Start Guide

4G battery-powered camera

Model: YH-A28D-i-4GNA-vsim

Download and Login

01

Download the App before establishing a connection with the device.

Scan the code to download

Scan QR code to download iCam 365 "App



App market download

Search for "icam365" in the Apple Store or Google Play and download it!

Register Login

Open the icam365 app and use third-party shortcuts to log in or register an account



App will be continuously updated, UI is based on the app

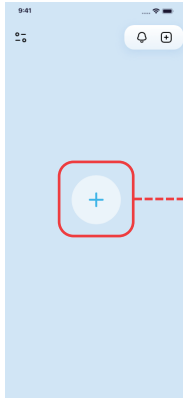
Add a new device

02

When adding the device, please ensure that the device is turned on. (You can turn it on by pressing and holding the device's ON/OFF button or toggling the switch to the "ON" position.) The type of switch for the device, whether it is a button switch or a toggle switch, is subject to the actual product received.

Step 1

Click the Add button



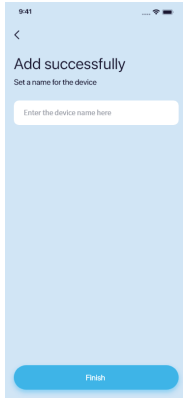
Step 2

Scan the QR code on the machine



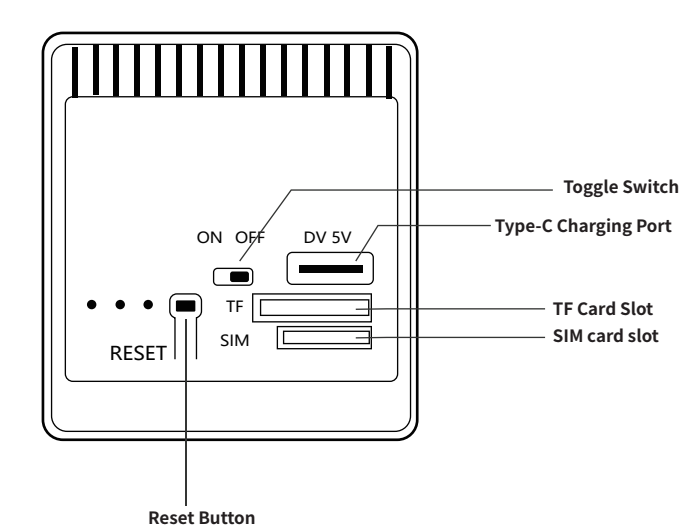
Step 3

Setting the device name



Product Overview

03



PS: Please insert the micro SD card in the direction shown in the diagram. If inserted incorrectly, the Micro SD card may get stuck and the device may be damaged. When inserting or removing the memory card, the device must be powered off (switched off) first.
TF Card Interface: Supports micro SD cards for local storage (up to 128GB).
SIM card interface: Insert the SIM card into the slot, so that the camera can connect to the 4G network. Connect to 4G internet.
Reset Button: Used to restore the camera to factory settings (long-press for 5-8 seconds).
Card Capacity Requirements: 8-128GB.
Read/Write Speed Requirements: Class 10 level.
File Format: FAT32

Common problem

04

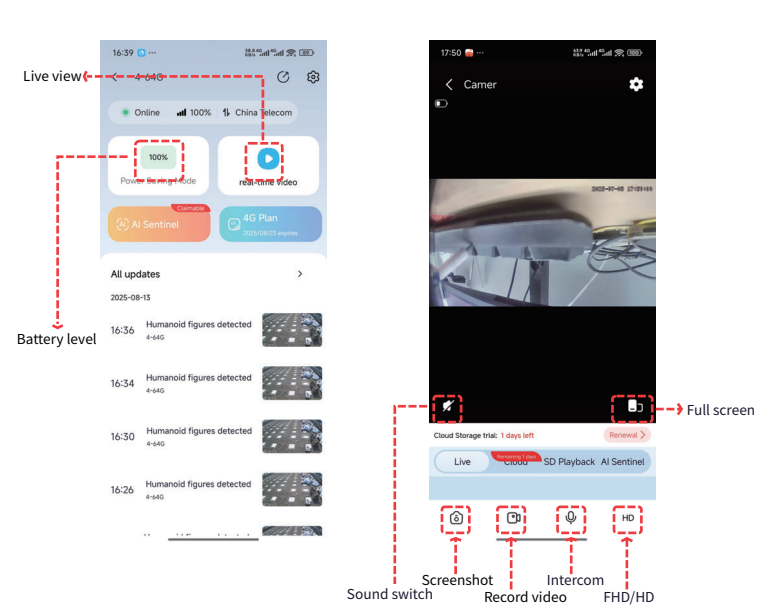
If the following methods still don't solve your problem, please contact the customer service of the camera you purchased, or contact the online customer service in the App, and we will solve it for you as soon as possible

Problems	Solution
Camera won't turn on	It is possible that the camera battery has been drained. Please fully charge the camera using the 5V power adapter, and then switch on again the
Camera offline?	1. Please check if the 4G network signal around the camera is good and avoid signal interference in the neighbourhood; 2. check whether the camera battery is fully charged. Please try to charge it before switching on the camera; 3. Check whether the traffic package of the camera SIM card has expired. Please contact the after-sales service through the APP "Help & Feedback" for assistance.
Alarm not detected ?	1. Improve the motion detection sensitivity of the camera; 2. Install the camera correctly to prevent intruders from walking vertically towards the camera. (Please refer to "Installing the camera" in the manual for the solution.) 3. If you need to detect vehicles or animals, please disable the "People Filter" function.
Can I connect to WiFi?	Wi-Fi is not supported, only 4G network is supported
What is the amount of 4G data consumed per month?	The amount of traffic consumed by the camera depends on the resolution you have selected for viewing. The higher the resolution, the more traffic is consumed. The longer the preview video and video playback time, the more data is consumed. The more times the PIR sensor is triggered, the more traffic is digested. The camera consumes about 2-8GB of cellular data per month.

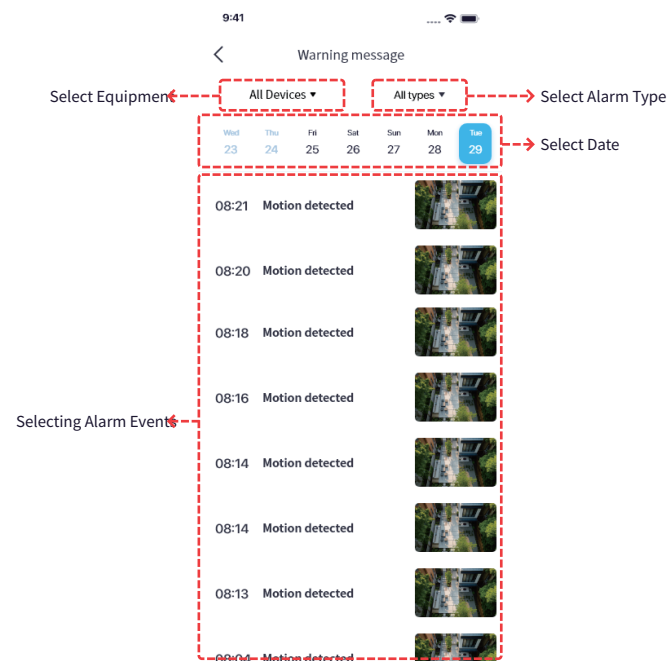
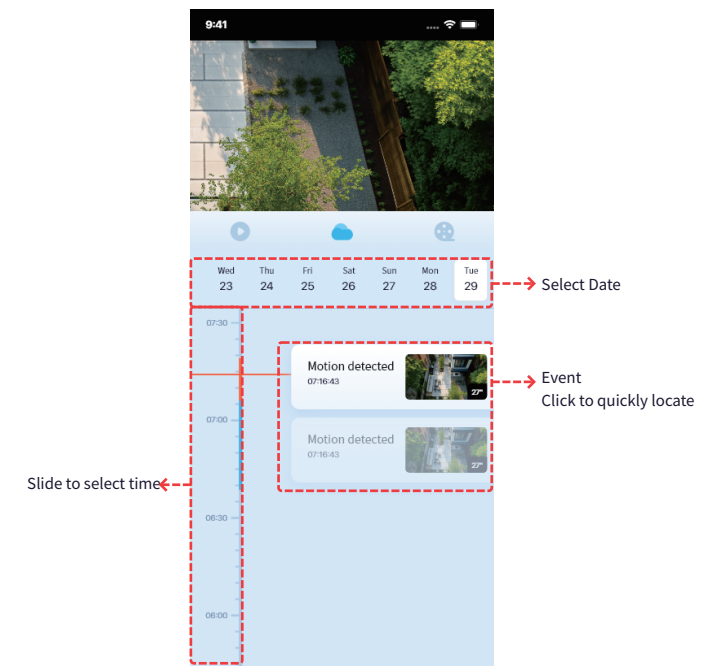
⚠ Each device has a different function, for reference only



⚠ Each device has different functions, for reference only



⚠ Each device has a different function, for reference only



Scan the QR code to download "icam365"

FCC Statement

This device complies with Part 15 of the FCC rules. Operation is subject to the following two conditions: 1) this device may not cause harmful interference, and 2) this device must accept any interference received, including interference that may cause undesired operation.

Note: This equipment has been tested and found to comply with the limits for a Class B digital device, pursuant to part 15 of the FCC Rules. These limits are designed to provide reasonable protection against harmful interference in a residential installation. This equipment generates uses and can radiate radio frequency energy and, if not installed and used in accordance with the instructions, may cause harmful interference to radio communications. However, there is no guarantee that interference will not occur in particular installation. If this equipment does cause harmful interference to radio or television reception, which can be determined by turning the equipment off and on, the user is encouraged to try to correct the interference by one or more of the following measures:

--Reorient or relocate the receiving antenna.

--Increase the separation between the equipment and receiver.

--Connect the equipment into an outlet on a circuit different from that to which the receiver is connected.

--Consult the dealer or an experienced radio/TV technician for help.

Changes or modifications not expressly approved by the party responsible for compliance could void the user's authority to operate the equipment.

FCC Radiation Exposure Statement

This device complies with RF radiation exposure limits set forth for an uncontrolled environment. This transmitter must not be co-located or operating in conjunction with any other antenna or transmitter.

This device must operate with a minimum distance of 20 cm between the radiator and user body.