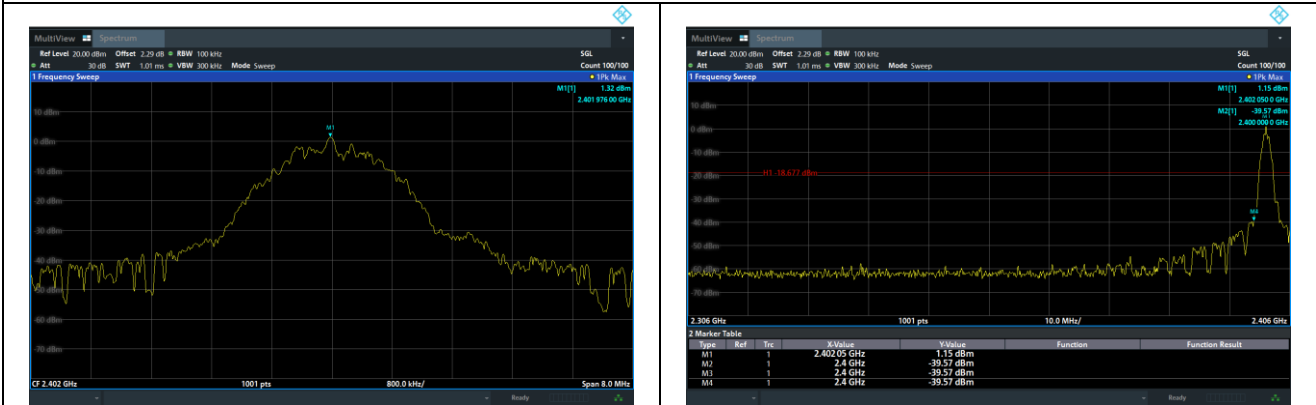
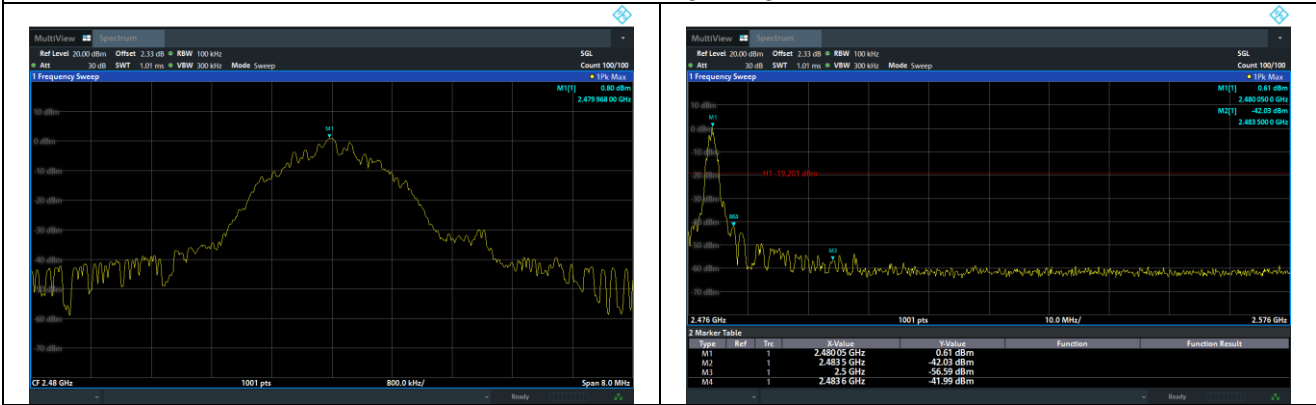


BLE 2M: Band Edge, Left Side



BLE 2M: Band Edge, Right Side



5.9 Spurious RF Conducted Emissions

5.9.1 Limit

Below -20dB of the highest emission level in operating band.

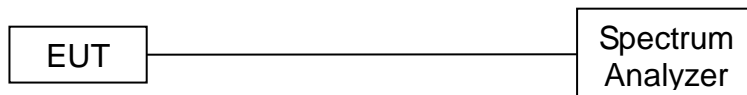
5.9.2 Measuring Instruments

The Measuring equipment is listed in the section 4 of this test report.

5.9.3 Test Procedure

The Spurious RF conducted emissions compliance of RF radiated emission should be measured by following the guidance in ANSI C63.10-2020 with respect to maximizing the emission by rotating the EUT, measuring the emission while the EUT is situated in three orthogonal planes (if appropriate), adjusting the measurement antenna height and polarization etc. Set RBW=100kHz and VBW=300kHz to measure the peak field strength, and measure frequency range from 9kHz to 26.5GHz.

5.9.4 Test Setup



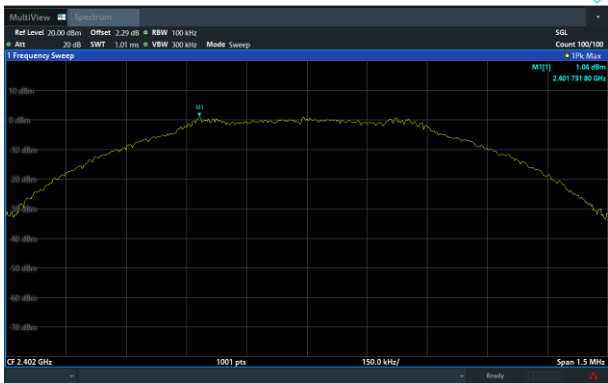
5.9.5 Test Results

Note:

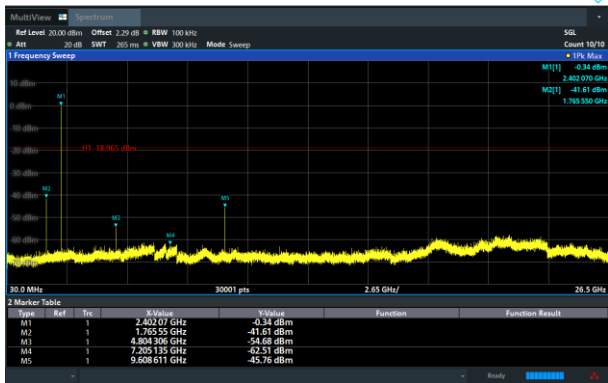
- 1: The measurement frequency range is from 9kHz to the 10th harmonic of the fundamental frequency. The lowest, middle and highest channels are tested to verify the spurious emissions and band edge measurement data.
- 2: The worst mode is GFSK mode, and the report only show the worst mode data.

BLE 1M

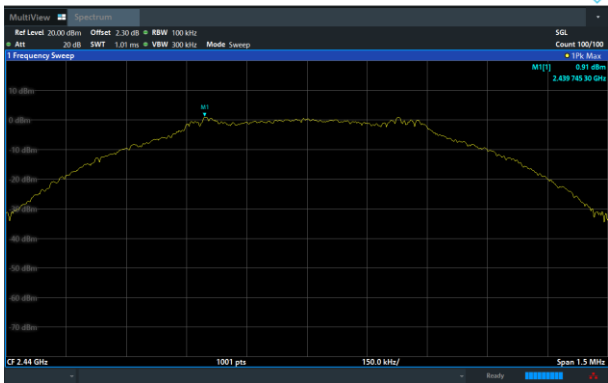
GFSK on Channel 00



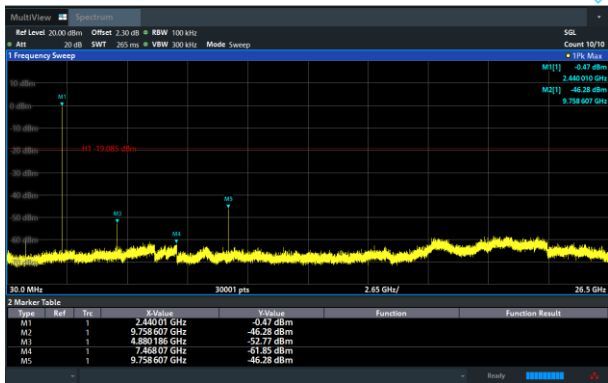
GFSK on Channel 00



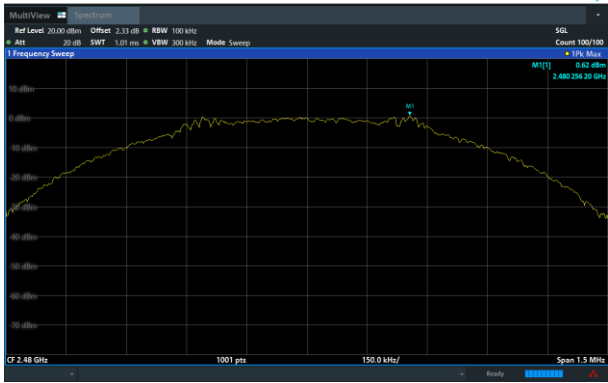
GFSK on Channel 19



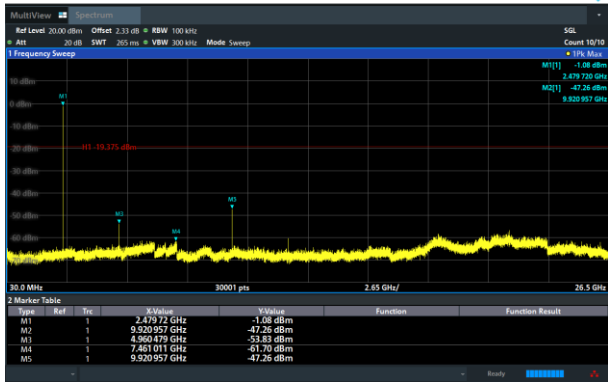
GFSK on Channel 19



GFSK on Channel 39

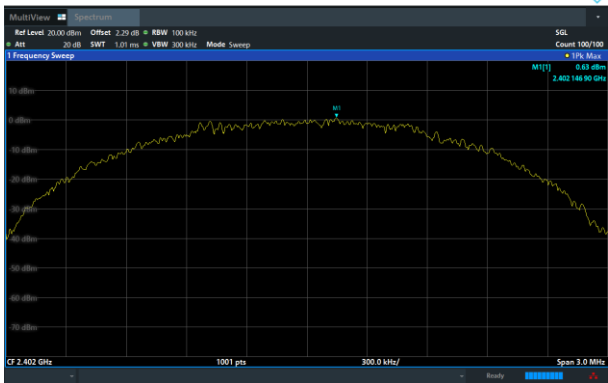


GFSK on Channel 39

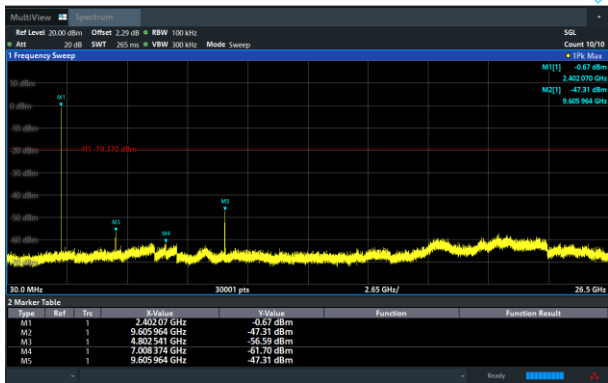


BLE 2M

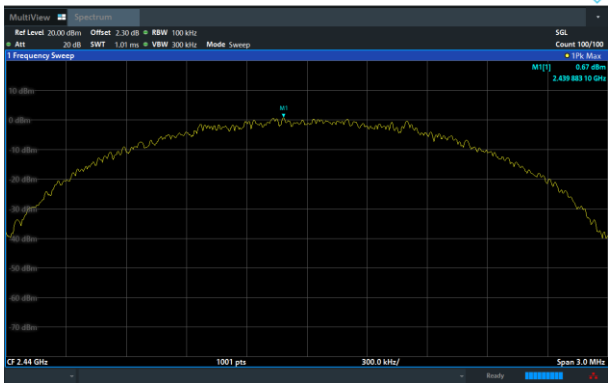
GFSK on Channel 00



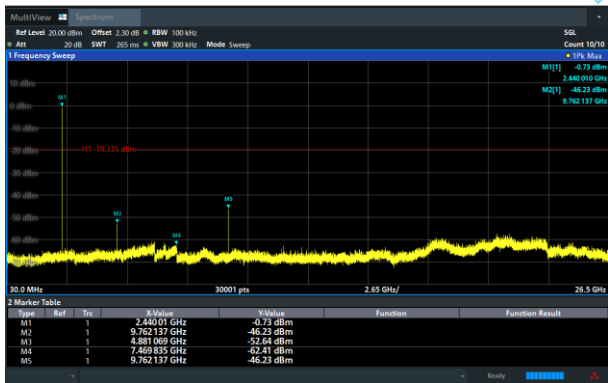
GFSK on Channel 00



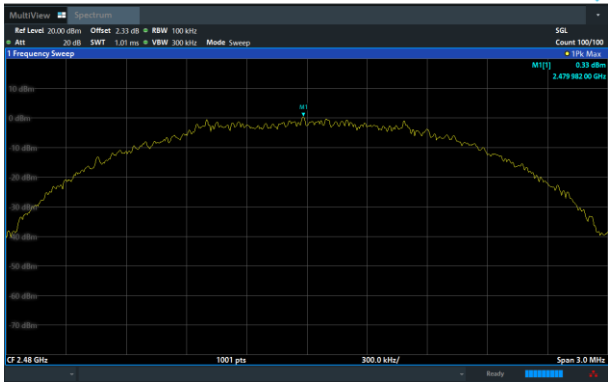
GFSK on Channel 19



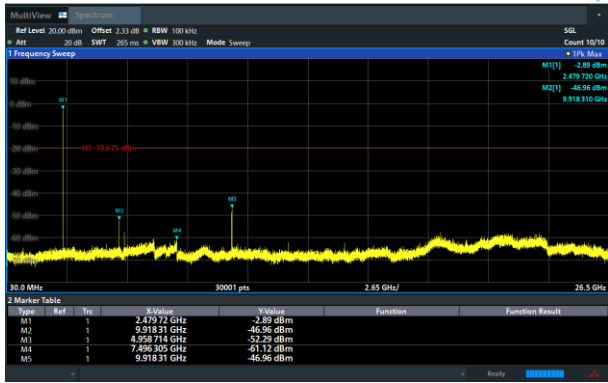
GFSK on Channel 19



GFSK on Channel 39

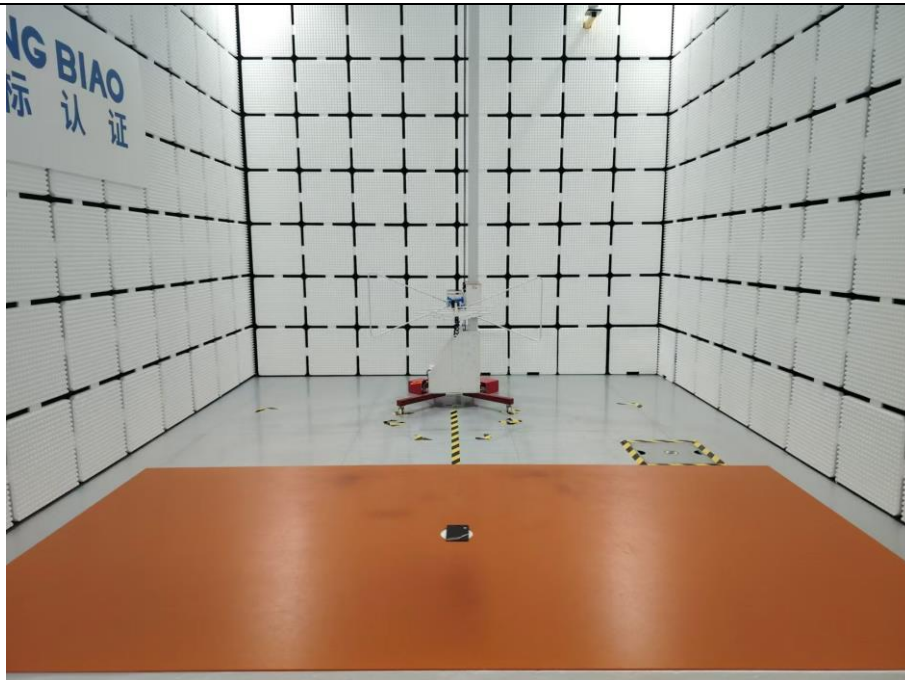


GFSK on Channel 39



6 Photographs of the Test Setup

Radiated Emission Below 1GHz



Radiated Emission Above 1GHz



Conducted Emission



7 Photographs of the EUT

Photo 1

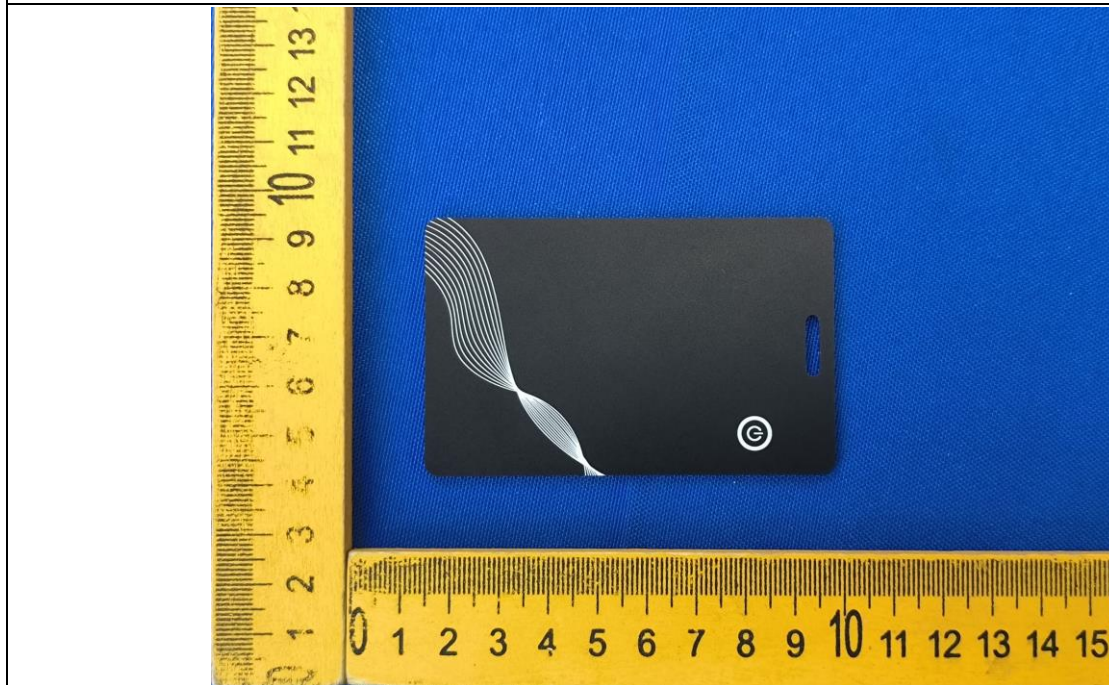


Photo 2

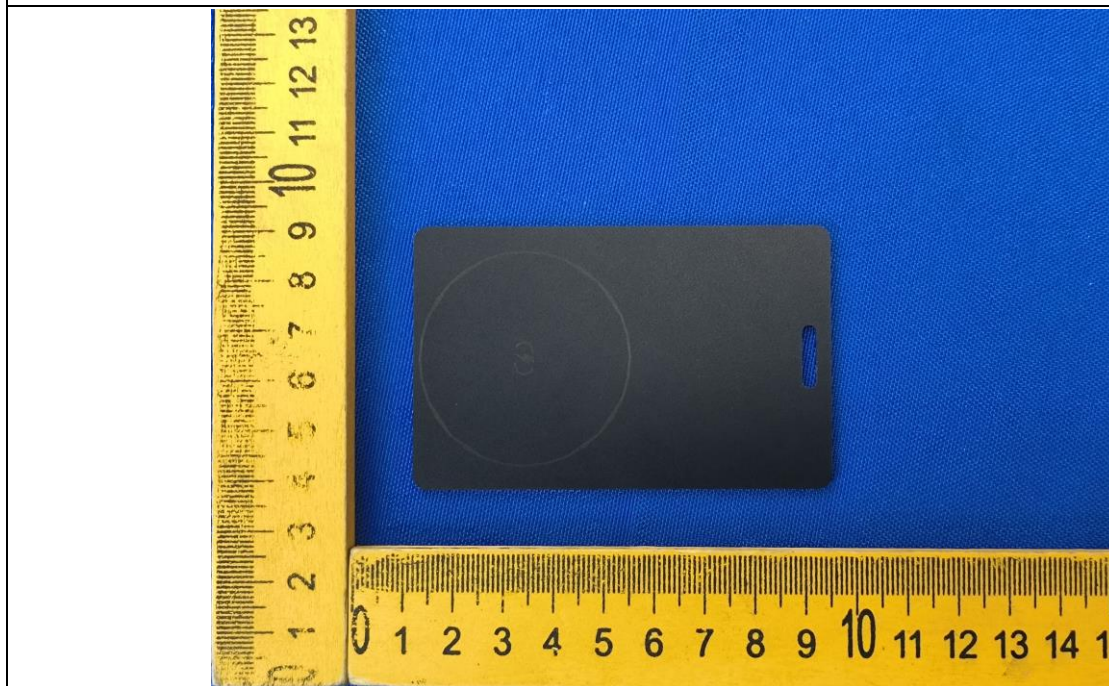


Photo 3

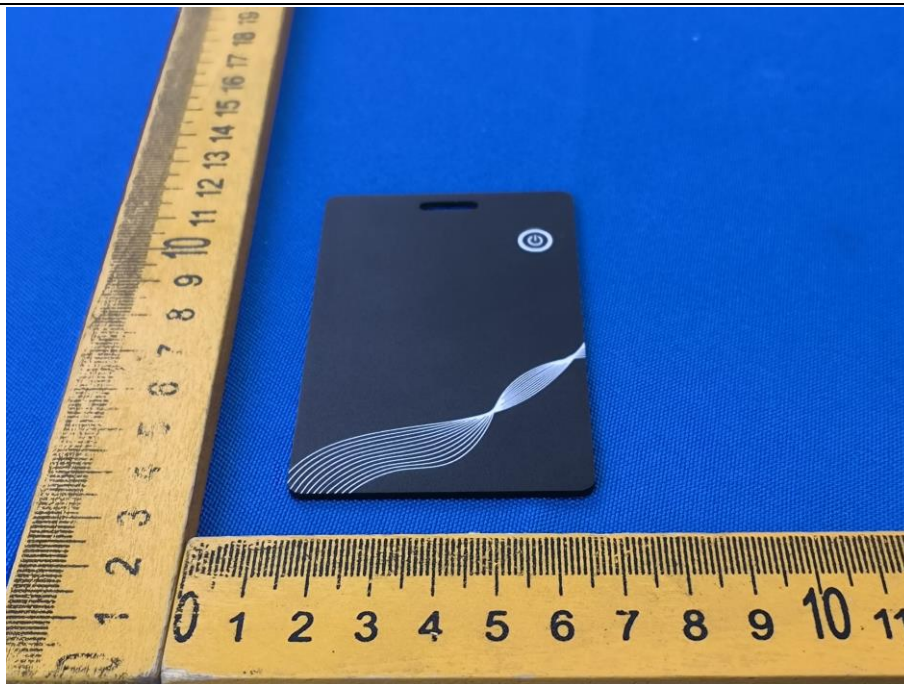


Photo 4



Photo 5

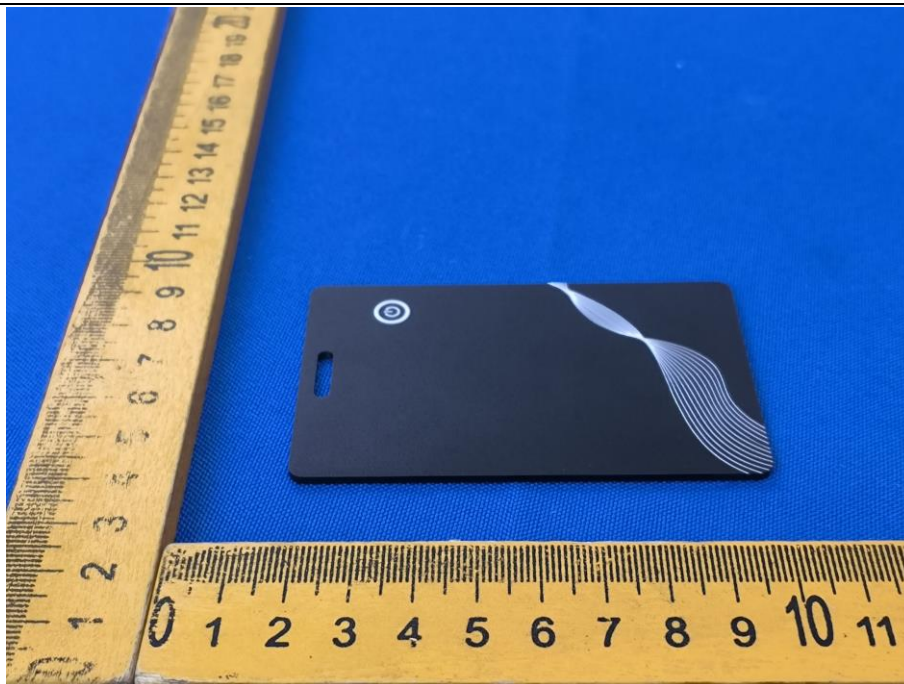


Photo 6



Photo 7

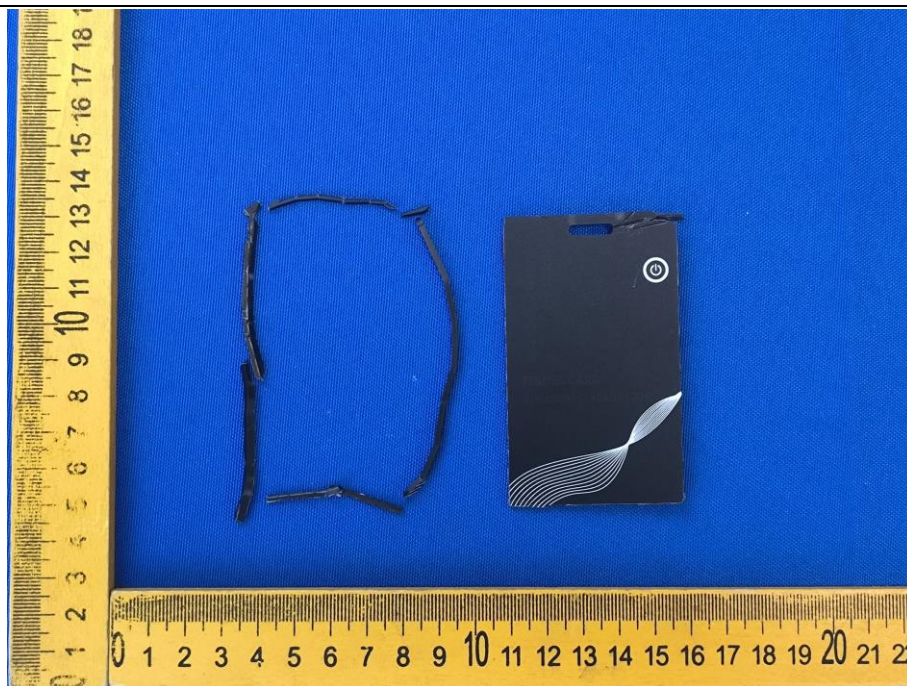


Photo 8



Photo 9

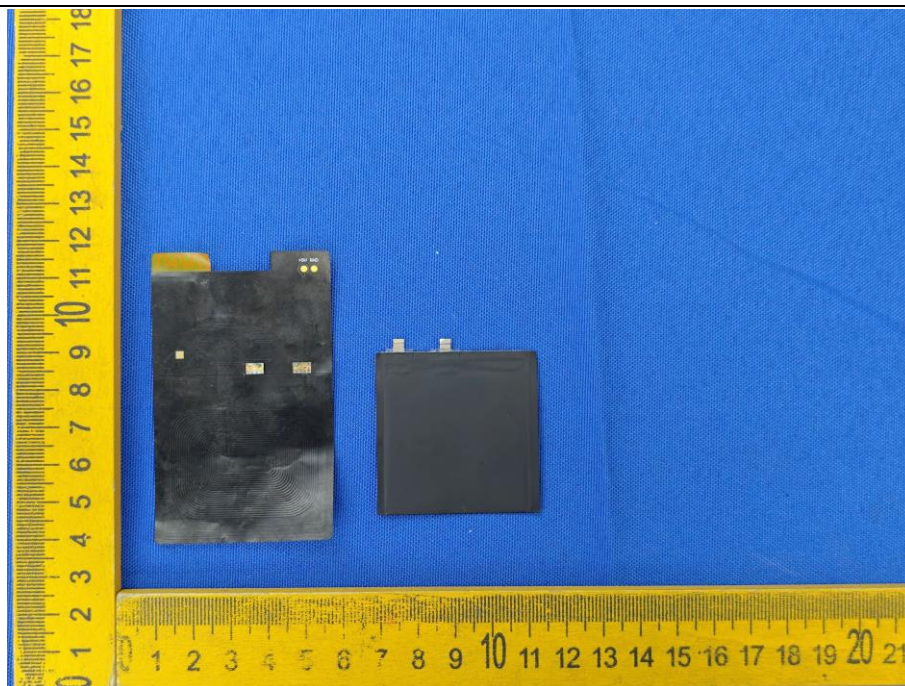
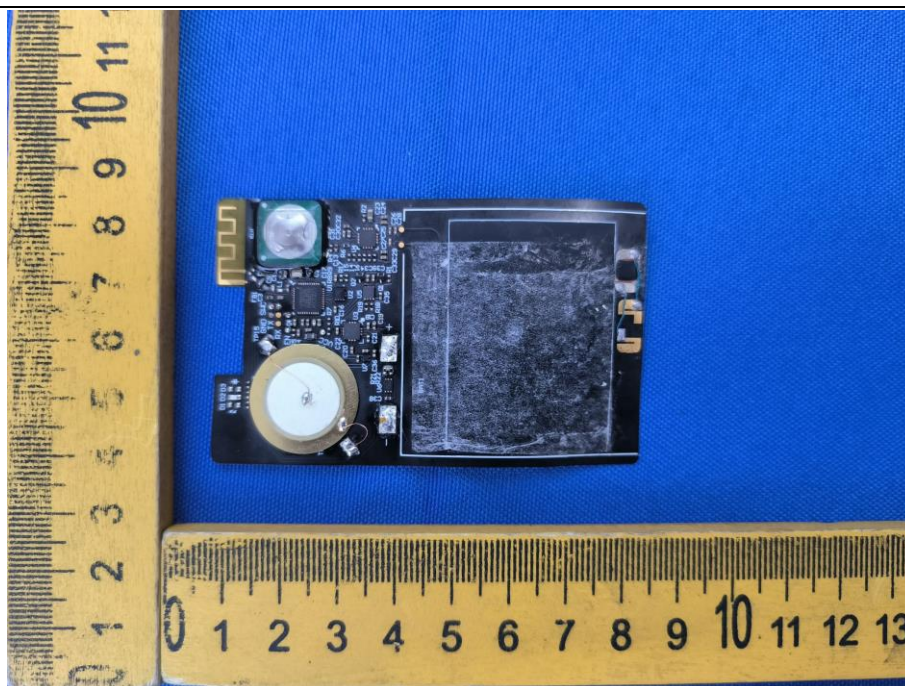


Photo 10



Add: Room 102, 201, Building 2, Yuanwanggu RFID Industrial Park, Tongguan Road, Tianliao Community, Yutang Street, Guangming District, Shenzhen, China
Tel: (86-755) 29989321 Fax: (86-755) 29985110 Web: www.sz-hongbiao.com