

ORION CAMERA

QUICK GUIDE



<https://kamivision.com>



<https://kamivision.com>

QUICK INSTALLATION GUIDE

Thank you for purchasing our products. Feel free to contact us if you have any question.
This manual is applicable to LD-IM-BA-1111-L11LD-IM-BA-2222-L3 Orion Camera Specification. This manual may contain technical inaccuracies, or inconsistencies with respect to product function or operation, or printing errors. Our company will update the contents of this guide according to future enhancement of product functions and will regularly improve or update the products or procedures described in this guide. The updated contents will be added to the new version of this guide without prior notice.

KAMI TECHNOLOGY CO., LTD

SAFETY INSTRUCTIONS

The purpose of the safety note is to ensure correct operation by users to avoid danger or property loss. Before using this product, please read this instruction carefully and keep it properly for future reference.

Warning

- Using a power supply that meets the SELV (Safety Extra Low Voltage) requirements, and the rated DC voltage is 12V and the rated current is 1A conformant to the limited power source.
- Do not disassemble or modify the product in any way in case the device does not work properly, instead please contact the dealer from whom you purchased the product. Damage caused by unauthorized modification or repair to the device will not be covered by the warranty.
- Do not use only. Do not expose the product to rain or water to reduce the risk of fire or electric shock.
- Installation of the product shall comply with local regulations.
- Power-off device should be used in building wiring.

KAMI TECHNOLOGY CO., LTD

SAFETY INSTRUCTIONS

Attention

- Check if proper power supply is provided before operating the product.
- Do not drop or knock the product heavily.
- Please make sure the camera lens are clean. When needed, using a slightly wet paper with alcohol to gently wipe off dust.
- Avoid direct strong light (i.e., bright light, sunlight, etc.) into the camera lens, or the image sensor in the product might get life shortened.
- Avoid direct laser light into the camera lens if laser devices are used.
- Avoid working environment with high humidity, strong dust, extreme hot or cold (normal working temperature: -10 °C ~ +40 °C), strong electromagnetic radiation or other critical conditions.
- Ensure proper air flow around the camera, or heat may accumulate and damage the camera.
- Avoid water or other liquid flowing into the camera.
- Push the product with the original factory packaging or materials of comparative quality when transporting the product.
- To not disassemble the equipment otherwise damage may be made to precise components inside the product.

KAMI TECHNOLOGY CO., LTD

PRODUCT INTRODUCTION

Product introduction
AI camera integrates traditional analog camera with digitized intelligent analysis capacity. Based on the latest video analysis algorithms and hardware acceleration chips by the Kami technology team, the camera runs embedded Linux operating system with intelligence, stability and reliability.

Product features
Multi-objects detection and tracking
Cross-camera identification
Action recognition
Large-scale data association
Integrated processing algorithms, superior calculation and powerful performance
Ultra-sensitive lens, supporting eight times line power consumption
Streamlined design and beautiful
Good heat dissipation performance
POE Power over Ethernet support, convenient installation, low deployment cost
Support independent construction network interruption, automatic front end data storage, 60 days of storage retention (network bandwidth enough)
Power and data analysis capability
It can be customized according to different uses

Powerful hardware

Intelligent system

KAMI TECHNOLOGY CO., LTD

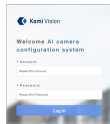
SYSTEM LOGIN

Function description

Provide login interface, registration, password retrieval function.
Activation tool access path:
<https://kamivision.com/us-west-1.aiyun.com/body/DevKam.go.me>

System path

After entering the URL into the browser, the login box will appear. Users can log in directly to the AI camera configuration system using the username and password on the camera label.



KAMI TECHNOLOGY CO., LTD

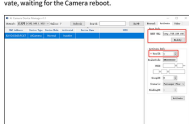
DEVICE ACTIVATION

In Windows system, the activation tool is used to activate the device.

Activation tool access path:
<https://kamivision.com/us-west-1.aiyun.com/body/DevKam.go.me>

System path

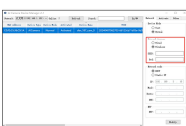
After entering the URL into the browser, the login box will appear. Users can log in directly to the AI camera configuration system using the username and password on the camera label.



KAMI TECHNOLOGY CO., LTD

DEVICE ACTIVATION

Change the network connection mode to wireless, enter the SSID and password of WIFI, click Modify, disconnect the network cable, and plug in the DC 12V power supply. After the device starts normally, the WIFI configuration is complete. If you do not need the Camera to connect to WIFI, skip this step.



KAMI TECHNOLOGY CO., LTD

DEVICE ACTIVATION

Device query after activation

After the camera is activated, the activated device will be displayed on the device management page of "Kami camera configuration system".



Be careful:

When the camera is activated, the color of the light in the camera will change accordingly. Specifically, before activation, a red light will flash slowly, while during activation, the red light will flash rapidly, and after successful activation, a green light will start to flash slowly.

Device activation can be carried out before or after installation according to actual needs.

KAMI TECHNOLOGY CO., LTD

System configuration

Add group

As shown in the figure below, the user needs to enter a group name, algorithm start and end time, as well as some note information, and click "Submit" button to create a group.



Group activated devices

Only after an activated device is grouped, the corresponding operation can be performed on the device. To do so, in the device management platform, select the corresponding device, and click the "Edit" button to select the corresponding group.



KAMI TECHNOLOGY CO., LTD

PRODUCT INTRODUCTION

Main applications

- It is suitable for all kinds of occasions requiring network remote monitoring, such as:
 - Passenger flow statistics service for large outdoor scenes, indoor stadiums, large shopping malls, etc
 - Provide remote monitoring services for nursing home, kindergarten and school.
 - Cross-camera identification services for boutiques, supermarket chains, offices, etc
 - Unattended system of indoor parking lot
 - Assembly line monitoring, event alarm detecting service for warehouse monitoring.
 - Airport, railway station, bus station, etc

KAMI TECHNOLOGY CO., LTD

INSTALLATION

Matters needing attention

- When unpacking the packing box, please check carefully to make sure that the product is not damaged.
- Please read this chapter carefully before installation.
- Be sure to turn off the power supply of all relevant equipment during installation.
- Check the power supply voltage to prevent device damage caused by voltage mismatch.
- Installation environment: please do not use it in the excessive humidity or high temperature environment. Please keep good ventilation and pay attention to rain proof. Avoid installation in the environment of severe vibration.
- If the equipment does not work normally, please contact the device supplier for inspection. Please do not disassemble or modify the equipment to any way. Problems caused by unauthorized modification or repair are not covered by the warranty.

KAMI TECHNOLOGY CO., LTD

INSTALLATION

Installation instructions

Orion Camera Specification is usually installed with spring buckle

Important:

Before installing the device, please select an appropriate place. The calling where the device is installed should have a certain thickness and can bear at least 3 times the weight of the camera.

Components of the device

The whole camera and its accessories include the whole camera, spring buckle, M5 nut and M5 gasket, as shown in the figure below.



KAMI TECHNOLOGY CO., LTD

SYSTEM REGISTRATION

System requirements

It is recommended to use the system on PC. The required browser and resolution are as follows:
PC browser: Google Chrome 64 bit, version 72.0 and above
360 security browser version 10.0 and above
PC resolution: 1920 * 1080

System path

| | |
|-------------|---|
| SYSTEM PATH | https://test-orion.kamivision.ai/admin |
| USER NAME | Obtain from the maintenance personnel |
| PASSWORD | Obtain from the maintenance personnel |

KAMI TECHNOLOGY CO., LTD

SYSTEM CONFIGURATION

Algorithm selection

Click the algorithm assistant button of the device to draw lines (in eight to polygon) and polygons on the screenshot from the camera, and the number of people crossing the line or inside the polygon area will be counted.



KAMI TECHNOLOGY CO., LTD

SYSTEM CONFIGURATION

Add area

In the area management page, first select a corresponding group, and then click the Add button in the area configuration panel to add a area. Further associating an area to multiple line segments is optional.

Add task

In the region management page, first select the corresponding group, and then click the Add button in the task configuration panel. To add a task, you need to enter the task name, task type, peripheral region and internal region fields. Then click the "Submit" button, and the task will be added successfully.



KAMI TECHNOLOGY CO., LTD

CONFIGURATION OF THE KAMI INTELLIGENT BUSINESS DATA ANALYSIS PLATFORM

System requirements

It is recommended to use the system on PC. The required browser and resolution are as follows:
PC browser: Google Chrome 64 bit, version 72.0 and above
360 security browser version 10.0 and above
PC resolution: 1920 * 1080

System path

| | |
|-------------|---|
| SYSTEM PATH | https://test-orion.kamivision.ai/main |
| USER NAME | Obtain from the maintenance personnel |
| PASSWORD | Obtain from the maintenance personnel |

KAMI TECHNOLOGY CO., LTD

PARAMETER

Device parameters

| | |
|---|---|
| Equipment size | 128.0mm x 66.0mm x 60.0mm (high) |
| Maximum frame rate | 30fps |
| Maximum resolution | 1080p@30fps |
| Whether POE power supply | Yes |
| Is supported | |
| Camera lens | CMOS |
| Focal length | 3.7mm |
| Lens adjustment angle range | Vertical: 15-40 degrees |
| Audio | |
| Video compression standard | H.264 and H.265 |
| Low illumination | support |
| Network | |
| Network interface | 1 RJ45, support 10m/100m/1000Mbps |
| Storage function | support SD card |
| Continuous monitor after network connection | support |
| Power supply | |
| Power supply mode | RS485 and standard POE supply voltage DC 12V power supply |

KAMI TECHNOLOGY CO., LTD

FCC Requirement

Any changes or modifications not expressly approved by the party responsible for compliance could void the user's authority to operate the equipment.

The device complies with Part 15 of the FCC rules. Operation is subject to the following two conditions:
(1) The device may not cause interference.
(2) The device must accept any interference received, including interference that may cause undesired operation.

This transmitter must not be so located or operated in conjunction with any other device or transmitter.

This equipment has been tested and found to comply with the limits for a Class A digital device, pursuant to Part 15 of the FCC Rules. These limits are designed to provide reasonable protection against harmful interference with the equipment when operated in a normal manner. This equipment generates, uses, and can radiate radio frequency energy and, if not installed and used in accordance with the instructions, may cause harmful interference to radio communications. Operation of this equipment in a residential area is likely to cause harmful interference, and the user will be required to correct the interference at his own expense.

This device complies with FCC radiation exposure limits set forth for an uncontrolled environment. This device should be installed and operated with minimum distance 20cm between the radiator & your body.

KAMI TECHNOLOGY CO., LTD