

User Manual

Car atmosphere light

12LED





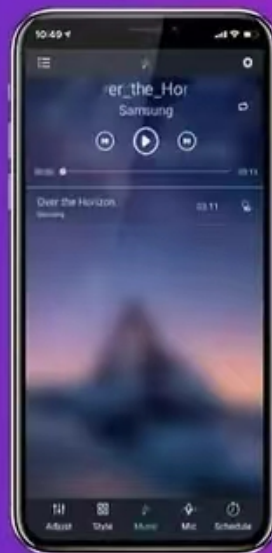
	<p>When in static mode (default): to adjust the brightness (16 grades)</p> <p>When in jump3, jump7 fade3, fade 7 mode : to adjust the light flashing rate</p> <p>When in music mode; to adjust the sensitivity of receiving music.</p>
	<p>Sound-control mode : 1.general music 2.tenderness music</p> <p>3.active music 4.DJ music</p>



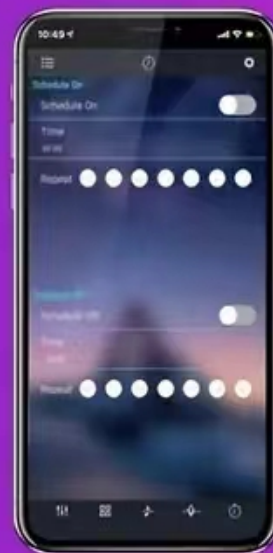
28 Styles



Mic Mode



Music Mode



Timer Setting



- ① Convenient to control by APP controller
- ② Up to 16 millions of colors
- ③ Adjustable Brightness from 1% to 100%
- ④ 28 styles light modes are optional
- ⑤ DIY colors by APP to create an excellent led lighting atmosphere

FCC Warning

This device complies with Part 15 of the FCC Rules. Operation is subject to the following two conditions:

(1) This device may not cause harmful interference, and (2) this device must accept any interference received, including interference that may cause undesired operation.

NOTE 1: This equipment has been tested and found to comply with the limits for a Class B digital device, pursuant to part 15 of the FCC Rules. These limits are designed to provide reasonable protection against harmful interference in a residential installation. This equipment generates, uses and can radiate radio frequency energy and, if not installed and used in accordance with the instructions, may cause harmful interference to radio communications. However, there is no guarantee that interference will not occur in a particular installation. If this equipment does cause harmful interference to radio or television reception, which can be determined by turning the equipment off and on, the user is encouraged to try to correct the interference by one or more of the following measures:

- Reorient or relocate the receiving antenna.
- Increase the separation between the equipment and receiver.
- Connect the equipment into an outlet on a circuit different from that to which the receiver is connected.
- Consult the dealer or an experienced radio/TV technician for help.

NOTE 2: Any changes or modifications to this unit not expressly approved by the party responsible for compliance could void the user's authority to operate the equipment.

RF Exposure Statement

To maintain compliance with FCC'S RF Exposure guidelines, This equipment should be installed and operated with minimum distance of 20cm the radiator your body. This device and its antenna(s) must not be co-located or operation in conjunction with any other antenna or transmitter.