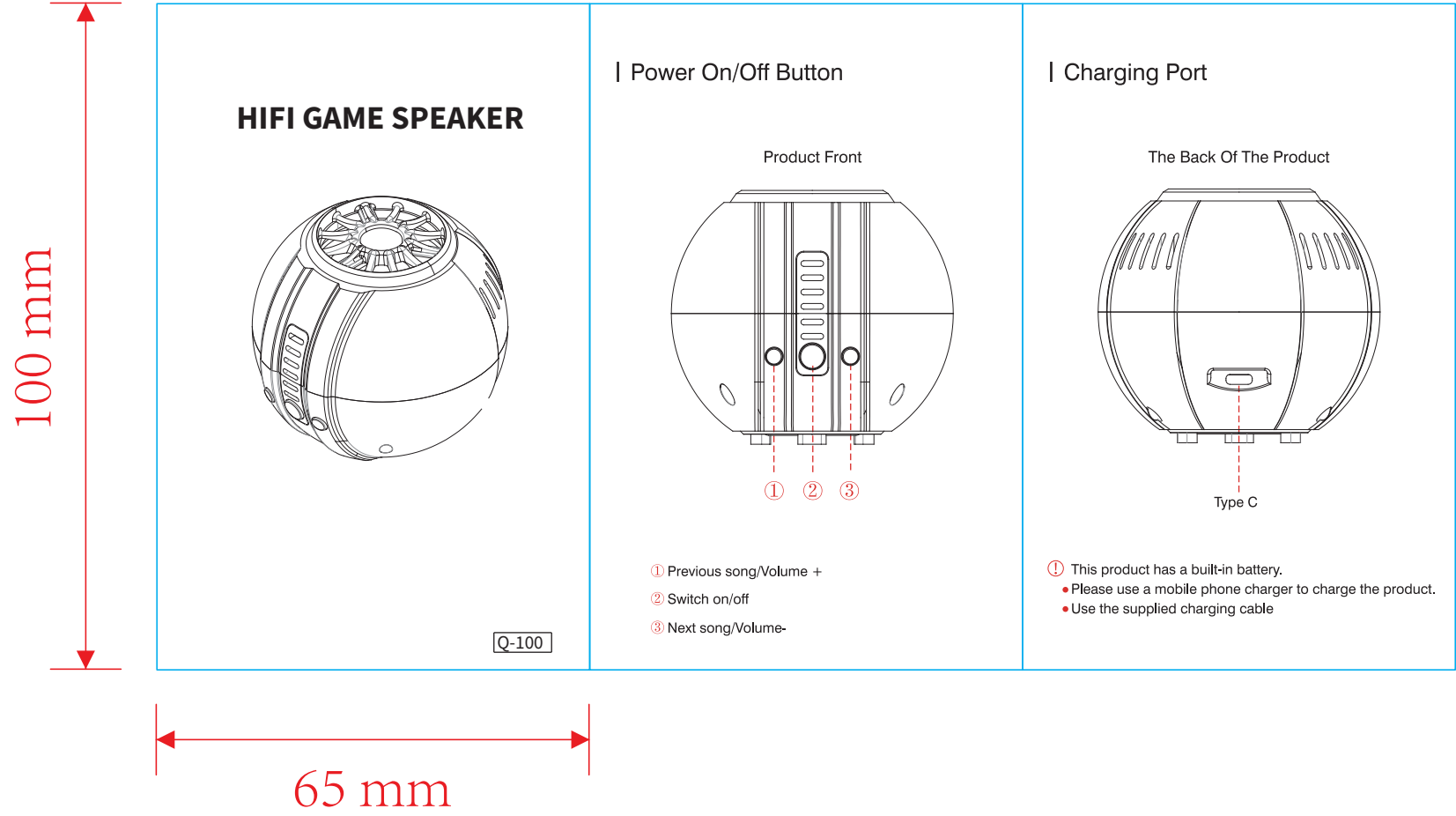
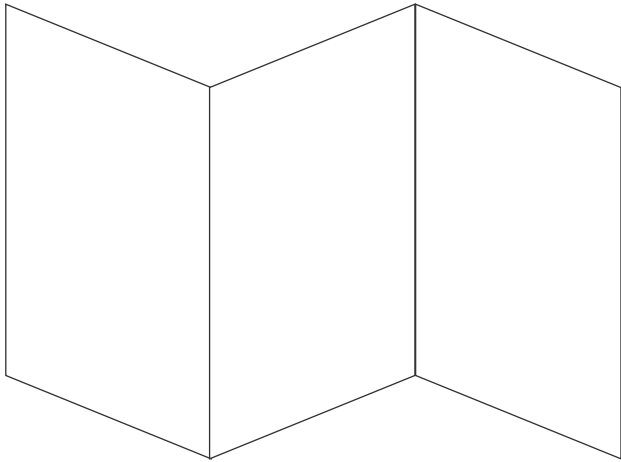


正面



材质：180g铜版纸
*单P尺寸65mmx100mm
方式：折页



反面

Black,Red,Golde,Pi

| Product Parameter

Norm	Φ100x85mm
Colour	Black,Red,Golde,Pink
Horn (automobile etc)	Φ57mm 6Q5W
Input Voltage	5V 1A
Output Power	5W
Bluetooth Name	Q-100
Bluetooth Version	V5.3
Batteries	3.7V 1200Mah
Bluetooth Range	<10m
Charging Time	2H
Playback Time	4H

| Instructions For Use

1. Long press ❷ button to switch on/off, short press to play pause
2. Long press ❶ button volume -, short press ❶ button previous song.
3. Long press ❸ button volume +, short press ❸ button previous song.
4. LED light flashes with sound effect.

| Caveat

- Before using this machine, please read this manual carefully.
- The environment for using the main machine must be ventilated, dry, no corrosive gas, sparse particles of dust, and away from sources of ignition.
- Use temperature 0℃ ~ +60℃; humidity <70%.
- The bare machine shall not be inverted, placed diagonally, standing on its side, and shall not be heavily pressed.
- If the host machine is not used for a long time, it should be continuously energised once every three months for one hour.

| After-sales Service

❶ In case of failure, non-professionals should not open the speakers by themselves, and should contact the supplier or our factory for maintenance matters; professional maintenance departments can also be commissioned to carry out maintenance.

❶ Our factory has a perfect after-sales service management system, if the supplier's after-sales service can not satisfy you, please complain to our factory's after-sales service centre directly. If the supplier's after-sales service cannot satisfy you, please complain to our factory's after-sales service centre directly.

AFTER-SALES TIPS

If you have any after-sales questions, please send us a photo of the product.

You can contact customer service on the platform or let us know your problem through after-sales email, and we will solve it for you as soon as possible.

东莞市金宝晟电子有限公司		材质	180g铜板纸
项目名称		表面处理	哑胶
单P尺寸	65mm*100mm	图纸版本	
折页方式	风琴三折页		

FCC Warning:

This equipment has been tested and found to comply with the limits for a Class B digital device, pursuant to part 15 of the FCC Rules. These limits are designed to provide reasonable protection against harmful interference in a residential installation. This equipment generates, uses and can radiate radio frequency energy and, if not installed and used in accordance with the instructions, may cause harmful interference to radio communications. However, there is no guarantee that interference will not occur in a particular installation. If this equipment does cause harmful interference to radio or television reception, which can be determined by turning the equipment off and on, the user is encouraged to try to correct the interference by one or more of the following measures:

- Reorient or relocate the receiving antenna.
- Increase the separation between the equipment and receiver.
- Connect the equipment into an outlet on a circuit different from that to which the receiver is connected.
- Consult the dealer or an experienced radio/TV technician for help.

Caution: Any changes or modifications to this device not explicitly approved by manufacturer could void your authority to operate this equipment.

This device complies with part 15 of the FCC Rules. Operation is subject to the following two conditions:

(1) This device may not cause harmful interference, and (2) this device must accept any interference received, including interference that may cause undesired operation.

This equipment complies with FCC radiation exposure limits set forth for an uncontrolled environment. This equipment should be installed and operated with minimum distance 0cm between the radiator and your body.