



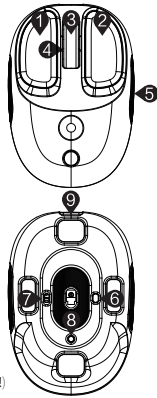
Q9

Operation Guide

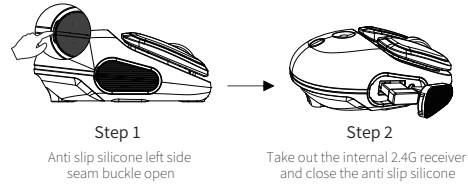
1、Specification Description:

Bluetooth Name: Q9
Number of buttons: 6
Interface type: TYPE-C
Input:5V=1A
Battery parameters:3.7V 500mAH
DPI:800-1600default-2400-4800 Fourth gear
Connection mode: Bluetooth connection, 2.4G connection
Wireless connection distance: 10 meters (in unobstructed open environments)
support system:Windows、Macos、IOS、Android
Product size:93x64x37mm
Product weight:95G
Manual measurement of relevant parameters. In case of any discrepancies, the actual product shall prevail!

- 1 Left click
- 2 Right click
- 3 Roller/middle key
- 4 Charging indicator light position, red light on during charging, red light off when fully charged
- 5 2.4G receiver storage area
- 6 DPI switching (800-1600 default -2400-4800)
- 7 On/off key (divided into three gear switches, the bottom is the shutdown switch, the middle is the startup switch, and the top is the lighting effect)
- 8 Mode switch button (default 2.4G, mode button switches to red light for 2.4G mode light switch to green light for BT1, blue light switch to BT2 Bluetooth mode)
- 9 TYPE-C charging interface (**fast charging is not allowed, please use the matching charging cable to connect to the computer for charging!**)

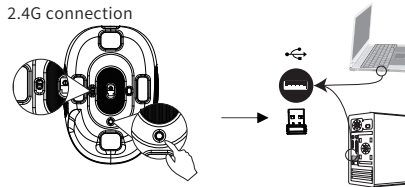


2. Receiver removal steps:



3. Connection method:

2.4G connection



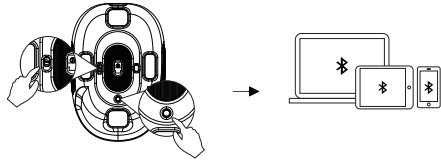
Turn the left power switch to the middle or top, click the mode switch button below to switch to 2.4G mode (the indicator light is red), and then plug the 2.4G receiver into any USB port on the computer. After the computer recognizes the mouse device, it can be used normally.



Want to learn more about scanning QR codes for reference

Authorized by: Yuandao Industrial (Shenzhen) Co., Ltd
Room 3610, 16th Floor, Jinhao Building, No. 109, Fuyong Section, Guangshen Road, Bao'an District, Shenzhen
Manufacturer: Jiangxi Jichi Technology Co., Ltd
Building 3, Godfrey Industrial Park, Lybao Avenue, Qingyuan District, Ji'an City, Jiangxi Province
Contact phone number: 0755-23089616
Website: www.eweadn.cn
Product execution standard number: Mouse GB/T 26245-2010
Attention: The product images are for reference only and may differ from the actual product. Please refer to the actual product. We apologize for any inconvenience caused!

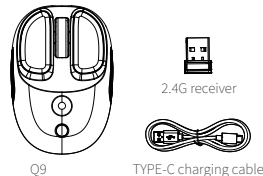
Bluetooth connectivity



Switch to Bluetooth mode (indicator light is BT1 green BT2 blue), open the Bluetooth of the device to be connected, search for (Q9), click on connect, and once the device is successfully connected, it can be used.

4. List of items:

1. Mouse
2. One TYPE-C charging cable
- 3.2.4G receiver
4. One manual warranty card



Quality assurance card

Thank you for purchasing the products of our EWEADN. Thank you very much! To ensure that you can use this product with peace of mind and better To protect your rights, our company strictly implements the joint information product department of the General Administration of Quality Supervision, Inspection and Quarantine of the People's Republic of China And the "Repair, Replacement, and Return of Microcomputer Products" jointly issued by the State Administration for Industry and Commerce On the basis of the Goods Liability Regulations, we implement after-sales service and hereby make the following commitments:

1. Service validity period:

Effective from the date of purchase, the date recorded in this certificate shall prevail.

2. Service content:

1. From the date of purchase, any product malfunctions caused by poor electrical performance will be free of charge during the warranty period Perform repairs. (The specific maintenance matters shall be handled by the provincial representative or the former product headquarters in the region)

3. Not within the scope of services:

1. Those who have exceeded the effective service or free repair period.
2. Failure to use, maintain, or store according to the correct instructions, resulting in malfunction or damage.
3. Malfunctions or damages caused by unauthorized repair agencies for products that are not EWEADN.
4. Products without dealer registration information and seal on the three guarantee certificate.
5. Unauthorized alteration of the content of the three guarantees certificate.
6. Consumers can remove the QC PASS sticker at the bottom of the product themselves.
7. Defective products caused by force majeure (such as earthquakes, fires, floods).
8. Product defects caused by human factors (such as operational errors, handling damage, bumps, input discrepancies) Suitable voltage, etc.
9. Other malfunctions or damages caused by non product design, technology, manufacturing, quality, and other issues.

Customer information	
User's Name:	Tel.NO:
E-mail:	
Model No:	Date of Purchase:

This certificate is an important basis for the after-sales service of the products of the EWEADN. Please keep it safe!Note: Please fill in his each item clearly, do not make unauthorized changes, and keep t warranty service card properly,To safeguard your legitimate rights and interests. If you need service or have any questions, please consult your local dealer orContact us.



Yuandao Industrial (Shenzhen) Co., Ltd., Room 3610, 16th Floor, Jinhao Building, No. 109, Fuyong Section, Guangshen Road, Bao'an District, Shenzhen
Jiangxi Jichi Technology Co., Ltd. Building 3, Godfrey Industrial Park, Lybao Avenue, Qingyuan District, Ji'an City, Jiangxi Province
Contact number: 0755-23089616
Website: www.eweadn.cn
Product execution standard number: Mouse GB/T 26245-2010
Keyboard GB/T 14180-2010
Attention: The product images are for reference only and may differ from the actual product. Please refer to the actual product. We apologize for any inconvenience caused!

FCC Caution:

This device complies with part 15 of the FCC Rules. Operation is subject to the following two conditions: (1) This device may not cause harmful interference, and (2) this device must accept any interference received, including interference that may cause undesired operation.

Any changes or modifications not expressly approved by the party responsible for compliance could void the user's authority to operate the equipment.

NOTE: This equipment has been tested and found to comply with the limits for a Class B digital device, pursuant to Part 15 of the FCC Rules. These limits are designed to provide reasonable protection against harmful interference in a residential installation. This equipment generates, uses and can radiate radio frequency energy and, if not installed and used in accordance with the instructions, may cause harmful interference to radio communications. However, there is no guarantee that interference will not occur in a particular installation.

If this equipment does cause harmful interference to radio or television reception, which can be determined by turning the equipment off and on, the user is encouraged to try to correct the interference by one or more of the following measures:

- Reorient or relocate the receiving antenna.
 - Increase the separation between the equipment and receiver.
 - Connect the equipment into an outlet on a circuit different from that to which the receiver is connected.
 - Consult the dealer or an experienced radio/TV technician for help.
- The device has been evaluated to meet general RF exposure requirement. The device can be used in portable exposure condition without restriction.

100mm

70mm

尺寸:70*100mm 正反双面黑白 折页
105g铜版纸 覆亚膜