

User Manual

This product has a unique and exclusive two-in-one design - the smart LED lamp and Bluetooth stereo audio speaker. Bluetooth 4.0 purity and definition of particular voice based on DSP technology. Wish you have infinite joy from the combination of light and music.

- Change color, warm/cool and brightness as you need;
- Timer setting: auto light, auto music and alarm clock;
- Mood lighting and music rhythm, enjoy music anywhere;
- Sound effect setting: Pop, Classical, Jazz, Bass and Flat.



Android



IOS



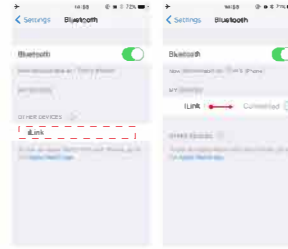
HUAWEI

Scan the QR-Code download APP .

I. Bluetooth Connection

For the first time you use it or never pair with "iLink" after moving the equipment , please have it paired according to the steps below:

I. First of all, please enter your phone's settings, open the Bluetooth, and pair with the " iLink ". Enter the System Settings - Bluetooth - to discover and connect the device name " iLink ". Once connected, you will hear the connection tone.



Tips : The next time you use, " iLink " will connect with your phone automatically(the Bluetooth is open).

II. Open " iLink " app, enter the main interface. Click the menu icon, enter the " BT Connect " , as follow :

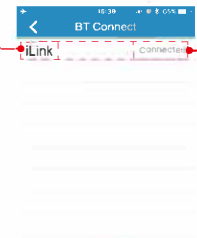


First, click the menu icon , enter the "Setting" interface

Then, enter "BT Connect"

III. "BT Connect", operate as follow

Then, click "iLink" to connect. "Connected" means the connection is successful.

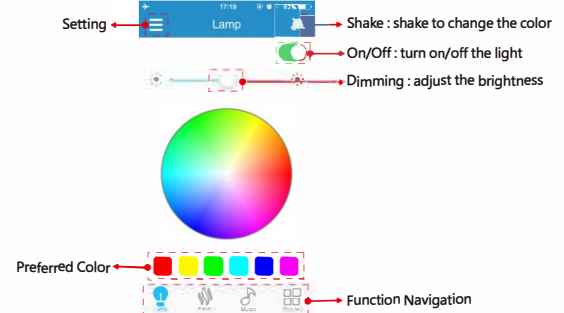


First,you should search your device.

Then, you can start operate the smart lamp via the app. Enjoy the magical light and music.

II. Main User Interface

A. Lamp: cool white light control



Setting

Shake : shake to change the color

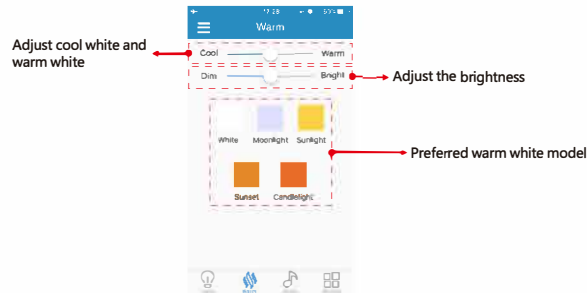
On/Off : turn on/off the light

Dimming : adjust the brightness

Preferred Color

Function Navigation

B. Warm: warm white light control



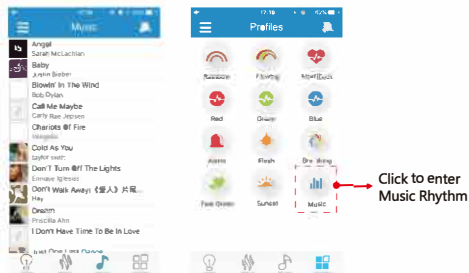
Adjust cool white and warm white

Adjust the brightness

Preferred warm white model

C. Music

When you use the lamp for the first time, please enter your phone's settings, open the Bluetooth, and pair the "iLink". Then, enjoy your favorite music. Only iTunes Player is support musical rhythm, the color flashing with the music. The third party player is not support.



Click to enter Music Rhythm

Music play interface



Song

The album and the progress

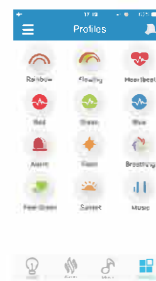
Play/Pause

Play Mode

Playlist

Tips : iOS system, non-iTunes music have none "Musical Rhythm" lighting effect.

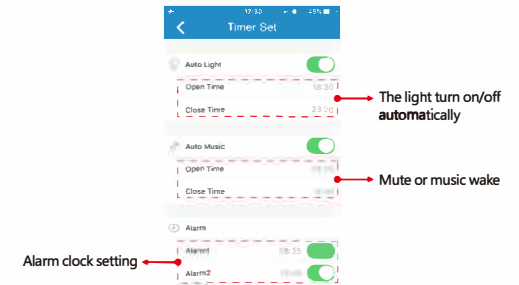
D. Profiles



Rainbow: brightness and color random changing gradually as the rainbow;
Breathing: brightness and color changing like breath;
Flashing: stage-lighting effect, the light fast switching;
Heartbeat: fast switching just like the heartbeat;
Music: "musical rhythm" lighting effect, working when music playback, stop when pause.

E. Timer Setting

It is your close sleep assistant and smart alarm clock. The music and lamp turn on/off automatically.



The light turn on/off automatically

Mute or music wake

Alarm clock setting

Tips : The function automatic work even when the Bluetooth disconnected.

F. Sound Effect

Sound effect setting: Pop, Classical, Jazz, Bass and Flat. You can set your favorite high pitch/low pitch sound effect via tone equalizer.



Warning: do not change the light's source !

do not dismantle the machine !

FCC Statement

This equipment has been tested and found to comply with the limits for a Class B digital device, pursuant to Part 15 of the FCC Rules.

These limits are designed to provide reasonable protection against harmful interference in a residential installation. This equipment generates uses and can radiate radio frequency energy and, if not installed and used in accordance with the instructions, may cause harmful interference to radio communications. However, there is no guarantee that interference will not occur in a particular installation. If this equipment does cause harmful interference to radio or television reception, which can be determined by turning the equipment off and on, the user is encouraged to try to correct the interference by one or more of the following measures:

- Reorient or relocate the receiving antenna.
- Increase the separation between the equipment and receiver.
- Connect the equipment into an outlet on a circuit different from that to which the receiver is connected.
- Consult the dealer or an experienced radio/TV technician for help.

This device complies with part 15 of the FCC Rules. Operation is subject to the following two conditions:(1) This device may not cause harmful interference, and (2) this device must accept any interference received, including interference that may cause undesired operation.

Any Changes or modifications not expressly approved by the party responsible for compliance could void the user's authority to operate the equipment.

This equipment complies with FCC radiation exposure limits set forth for an uncontrolled environment. This equipment should be installed and operated with minimum distance 20cm between the radiator & your body.