



EPS Series Automotive Diagnostic Apparatus



Instruction

Dear customers,

Thank you for purchasing our products. To use the product better, please read the Instruction carefully and keep it seriously for reference afterwards.

Installation instruction Android


Setp 1

Scan the QR code, enter the serial number of Dongfeng English Diagnostic Apparatus, download the APP and install it.



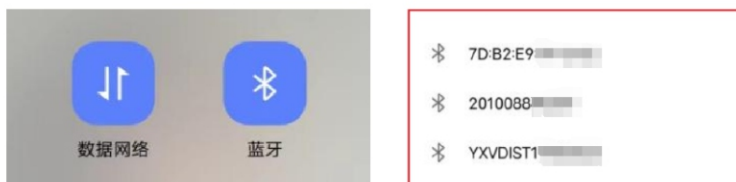
Setp 2

Dongfeng English diagnostic apparatus can be connected by bluetooth and wired.

Wired connection: After the USB is plugged in, the icon will be displayed in the upper left corner  , thus the wired connection is successful. As shown in the figure below:



Bluetooth connection: Insert the diagnostic apparatus into the OBD plug of the vehicle, turn on the vehicle key, turn on the bluetooth, search for the bluetooth, make sure bluetooth name and device serial number are consistent then click pairing. As shown in the figure below:



Setp 3

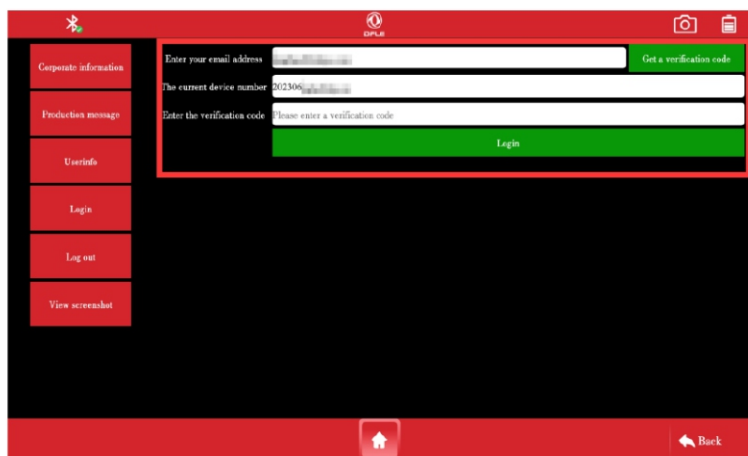
Turn on the China ShuangLi Diagnostic Apparatus, and select the serial number of the current device from the paired devices. At this point, the bluetooth connection is successful.



Setp 4

Click on any menu to prompt product activation,enter email address and obtain verification code. Activation succeeded!





Step 5

Click the "Update" in the lower left corner, and it can be used normally after the update is completed.

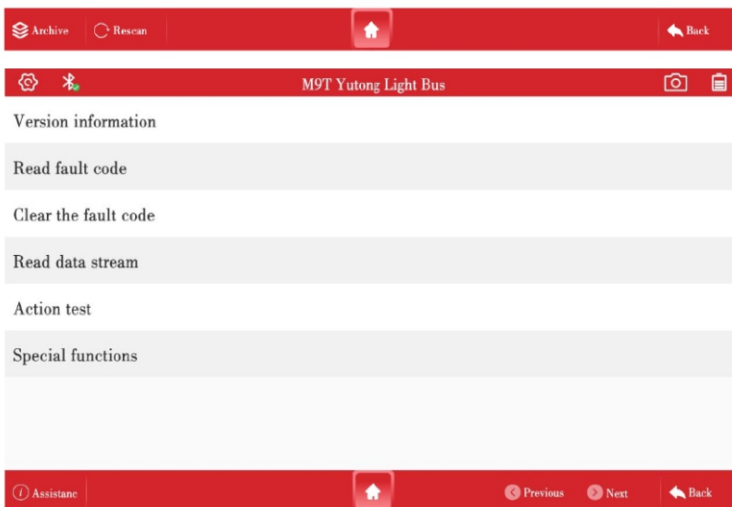


Step 6

Click the "Intelligent Diagnosis" to start the diagnosis!



Engine:M9T Yutong Light Bus
Engine:M9T-Nissan pickup truck
Engine:M9T Dongfeng Light Passenger
Engine:M9T Dongfeng Light Truck ZD23



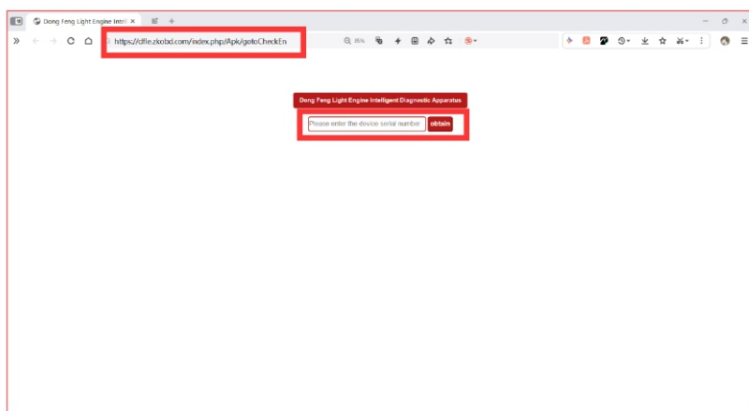
Installation instruction Windows

Download and install steps

1. Enter the website address in the browser. Before installing the software, it is recommended to close the antivirus software.

<https://dfle.zkobd.com/index.php/Instructions/dfleEnApp>

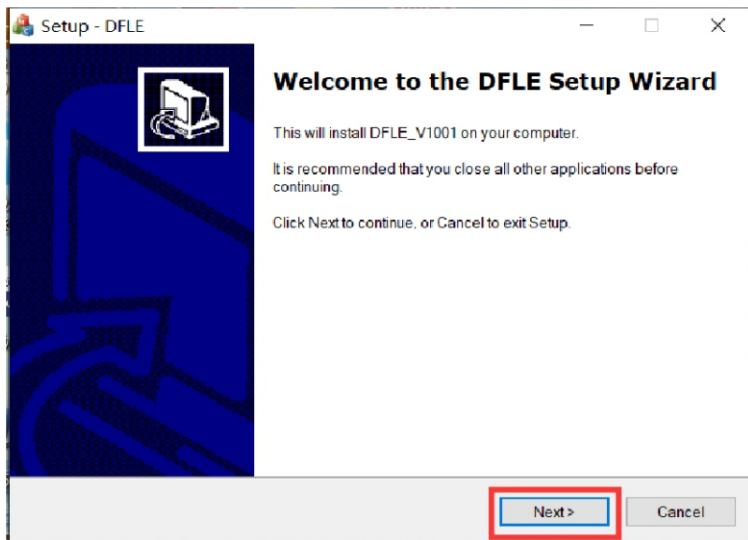
2. After entering the webpage, enter the serial number to obtain the software.



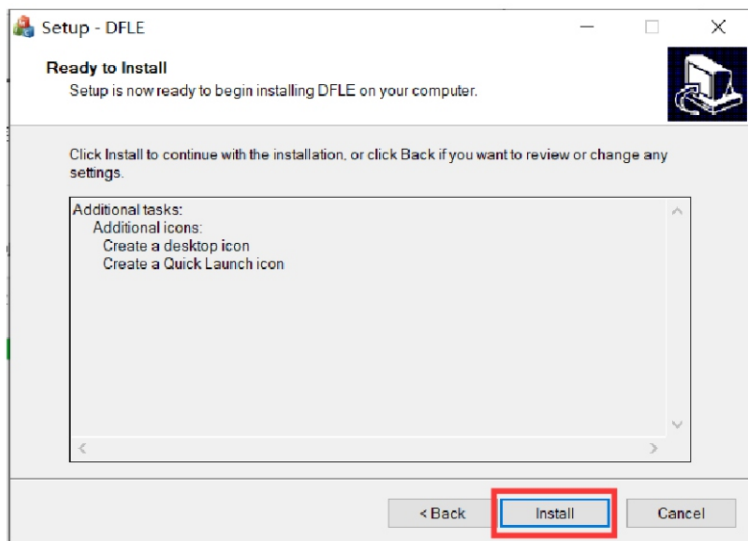
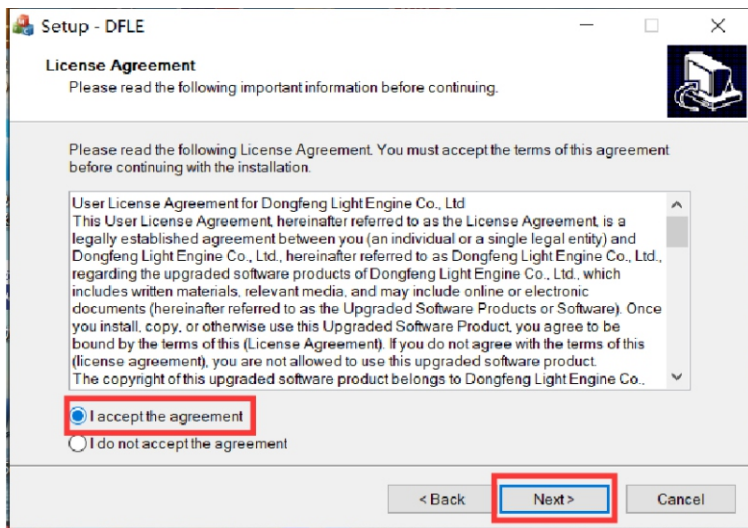
3. Locate the DFLE installation package folder, double-clicking to open it. To find the DFLE.exe and double-click to install it.



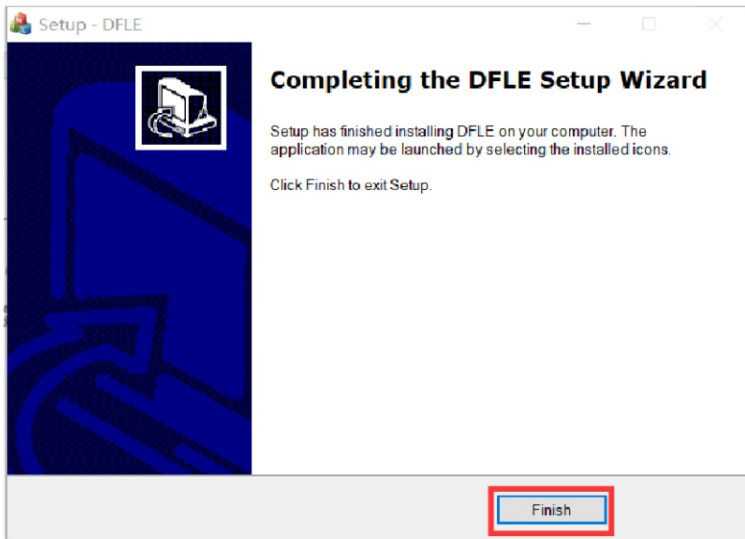
4. After double-clicking DFLE.exe, a dialog box appears, then click the "Next".



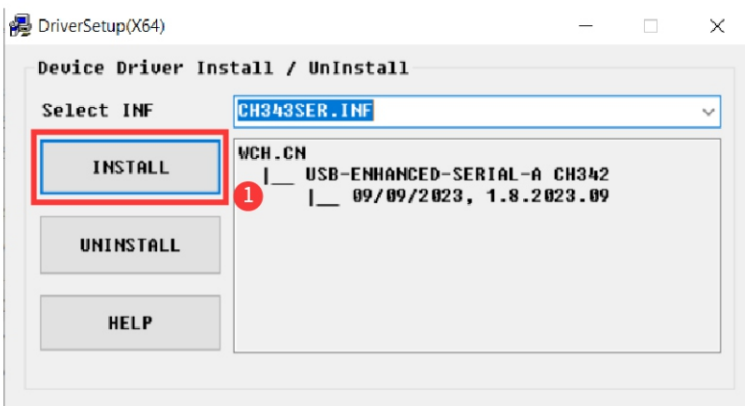
5. Select "I accept the agreement", click the "Next" to select the installation path, use the default installation path, and click the "Install".

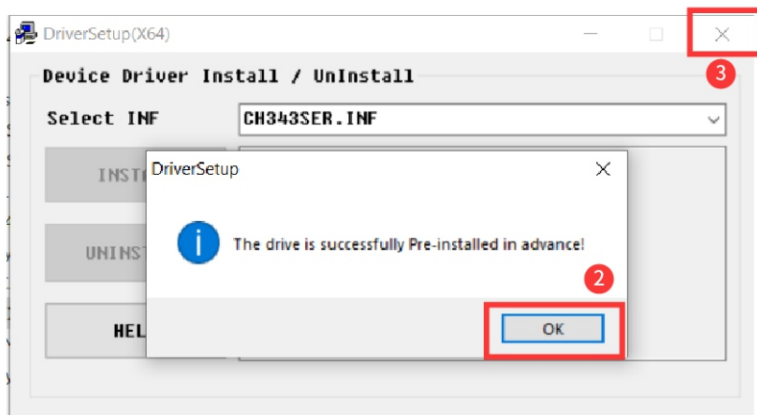


6.It is being installed. After the green progress bar runs full, the FTDI CDM Drivers driver installation prompt box will appear.,then click the "Finish" to proceed to the next step.




7. After completing the installation, the installation prompt box of CH343SER.INF driver will pop up, then click the "Install". Click "OK" after prompting that the installation is successful. Click the top right corner to close the program, and the installation is completed. (Driver installation will switch languages in accordance with computer system)

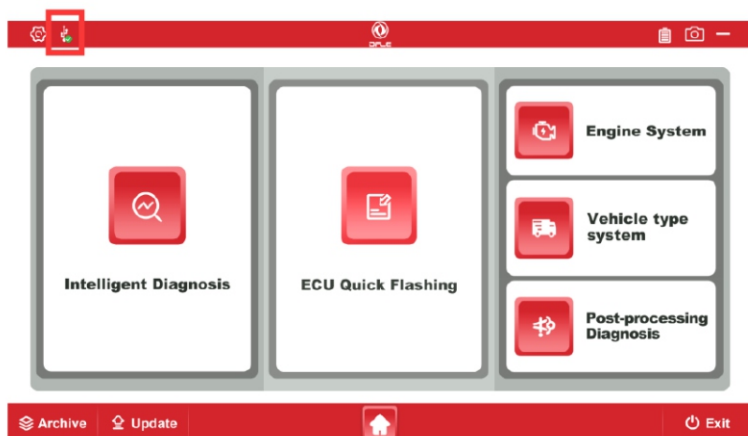





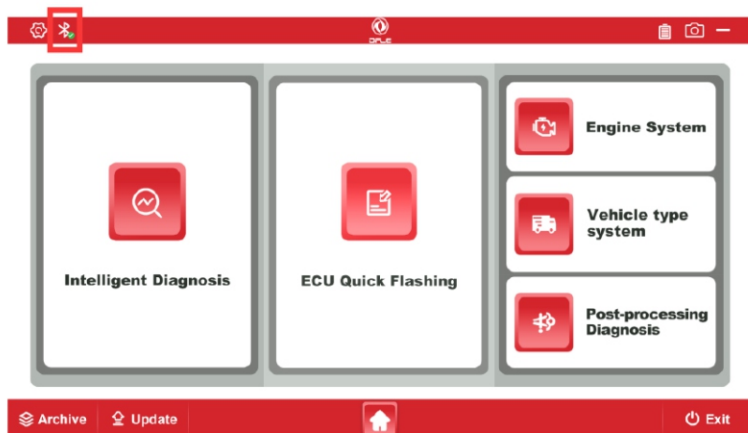
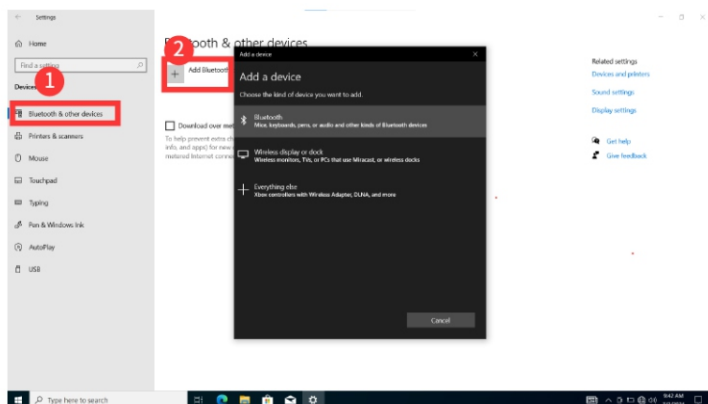
Upgrade registration steps

1. Dongfeng English diagnostic apparatus can be wired connection or Bluetooth connection .

Wired connection: This icon will be displayed in the upper left corner after the USB cable is plugged in.  USB connection is successful, as shown in the figure below.



Bluetooth connection: the diagnostic apparatus was inserted into the OBD plug of the vehicle, the vehicle key was turned on, turn on device bluetooth, and add it, make sure that the bluetooth name is the same as the device serial number, click "Pairing" to open the application and click "OK". The bluetooth connection is successful when the icon  is in the upper left corner, as shown in the following figure.



2.How to register and update

Registration:

- ①Turn the Dongfeng English diagnostic apparatus.Click the update button in the lower left corner.
- ②Prompt that "Unregistered,the product cannot be updated. Do you want to register now? " Click the "OK"



- ③Enter the email to get the verification code, click "Register".





④Click "Back" after successful registration.



Update:

- ①Click the "Update" button in the lower left corner.
- ②Update the diagnostic software to the latest one and it can be used normally.



changes or modifications not expressly approved by the party responsible for compliance could void the user's authority to operate the equipment.

This device complies with Part 15 of the FCC Rules. Operation is subject to the following two conditions:

- (1) this device may not cause harmful interference, and
- (2) this device must accept any interference received, including interference that may cause undesired operation.

Note: This equipment has been tested and found to comply with the limits for a Class B digital device, pursuant to Part 15 of the FCC Rules. These limits are designed to provide reasonable protection against harmful interference in a residential installation. This

equipment generates, uses, and can radiate radio frequency energy, and if not installed and used in accordance with the instructions, may cause harmful interference to radio communications. However, there is no guarantee that interference will not occur in a particular installation. If this equipment does cause harmful interference to radio or television reception, which can be determined by turning the equipment off and on, the user is encouraged to try to correct the interference by one or more of the following measures:

- Reorient or relocate the receiving antenna.
- Increase the separation between the equipment and receiver.
- Connect the equipment into an outlet on a circuit different from that to which the receiver is connected.
- Consult the dealer or an experienced radio/TV technician for help.

This device complies with FCC radiation exposure limits set forth for an uncontrolled environment. This device should be installed and operated with minimum distance 20cm between the radiator & your body.