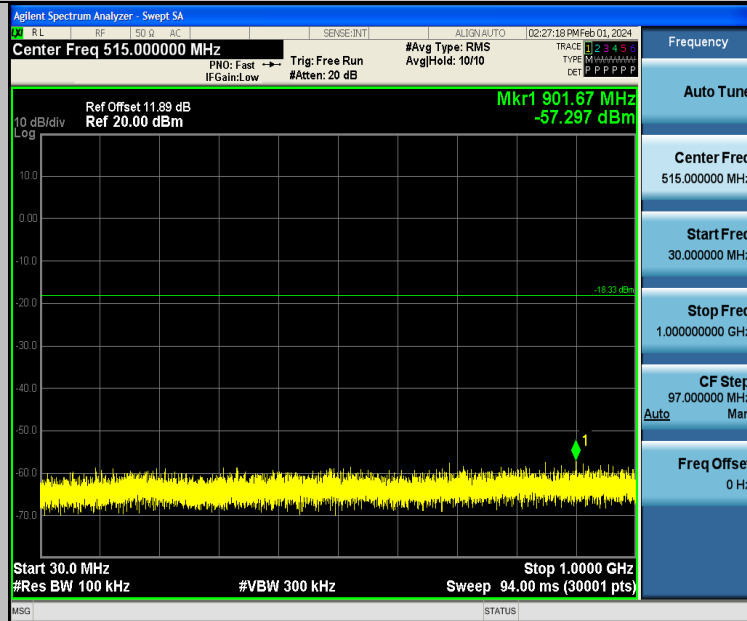
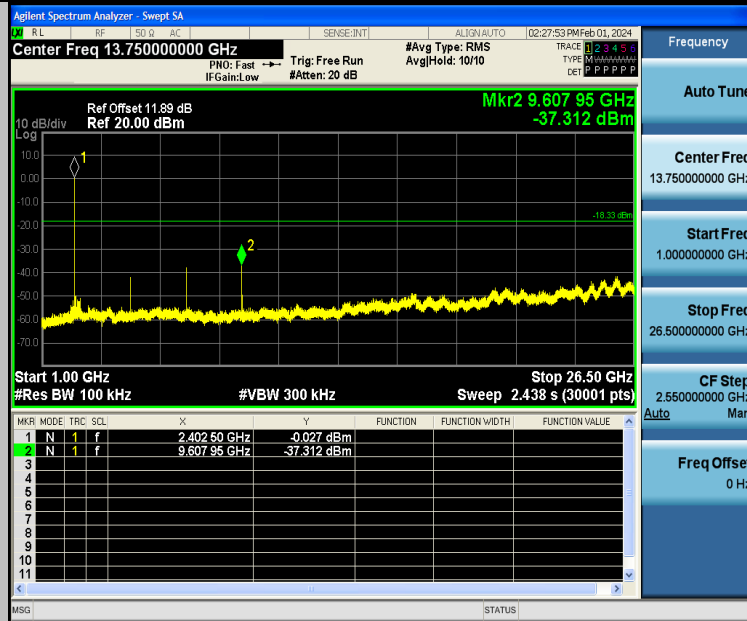




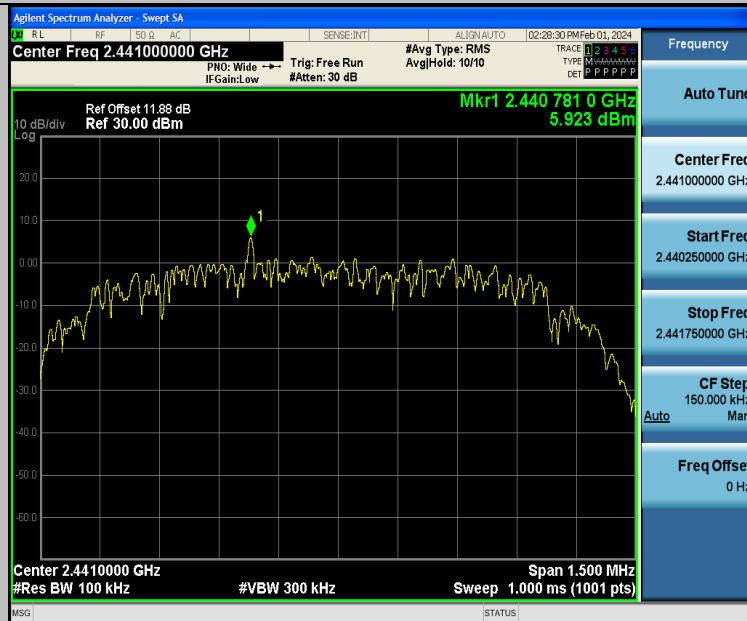
2DH5-Ant2-2402-0~Reference-PASS



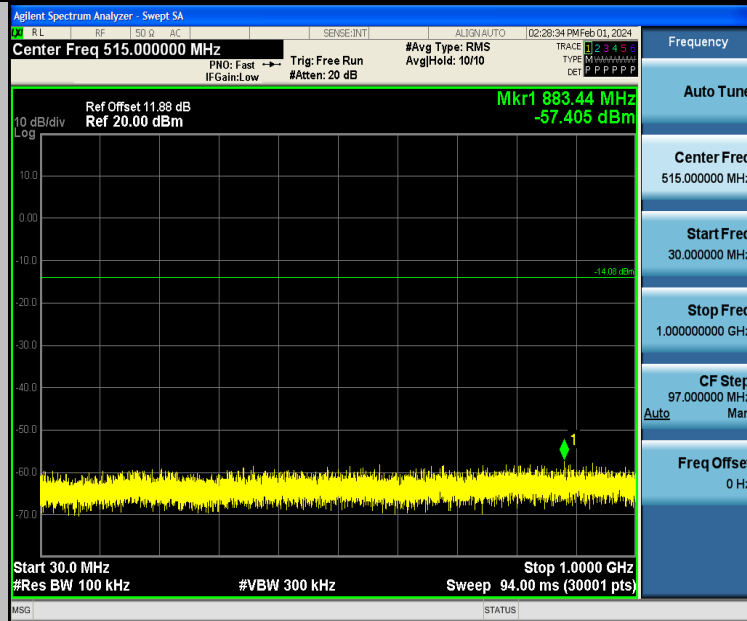
2DH5-Ant2-2402-30~1000-PASS



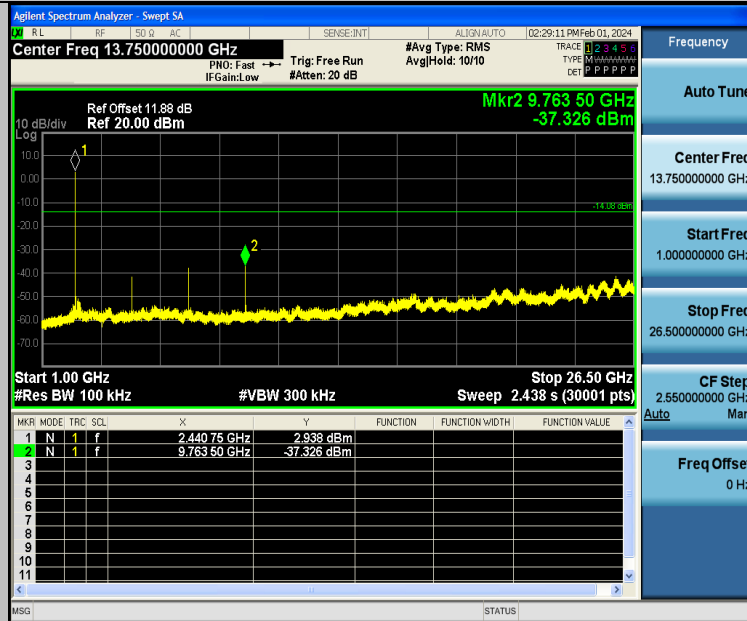
2DH5-Ant2-2402-1000~26500-PASS



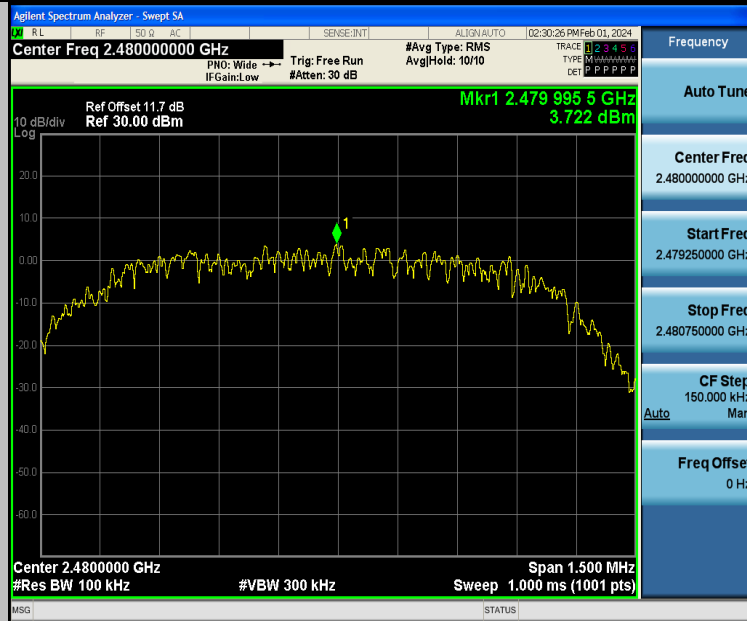
2DH5-Ant2-2441-0~Reference-PASS



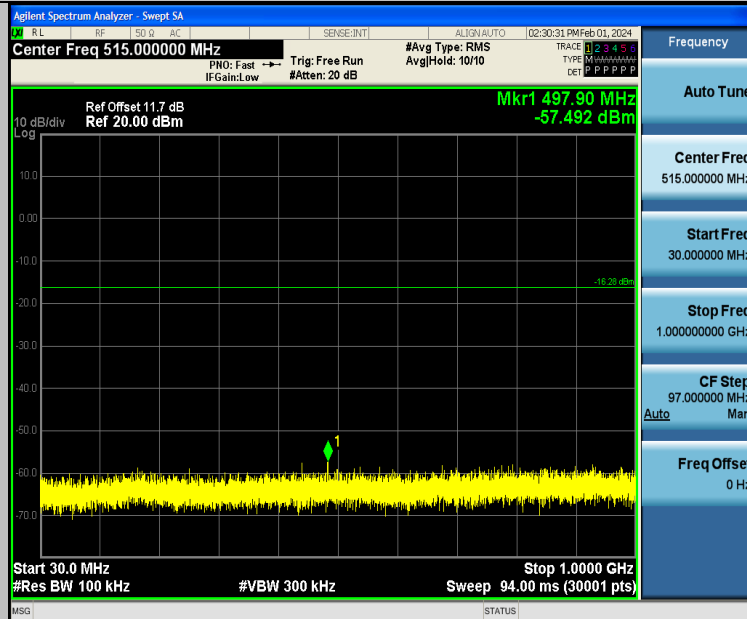
2DH5-Ant2-2441-30~1000-PASS



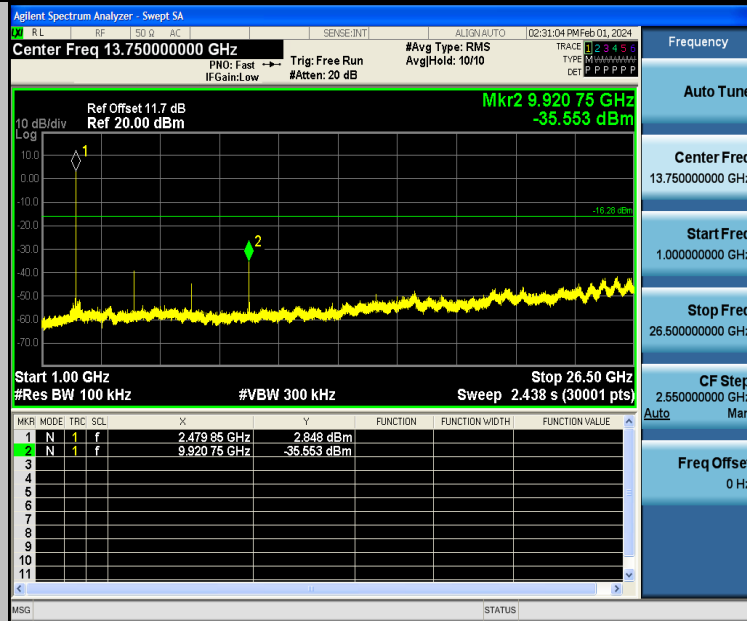
2DH5-Ant2-2441-1000~26500-PASS



2DH5-Ant2-2480-0~Reference-PASS



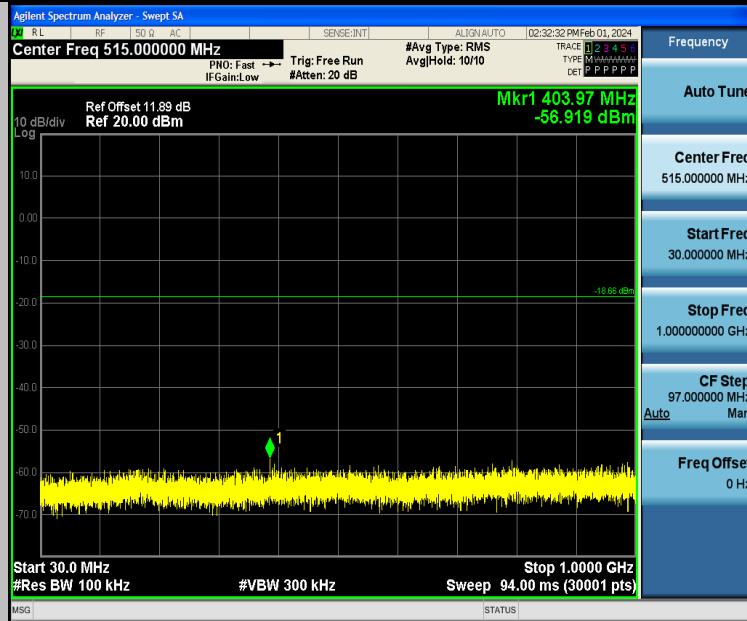
2DH5-Ant2-2480-30~1000-PASS



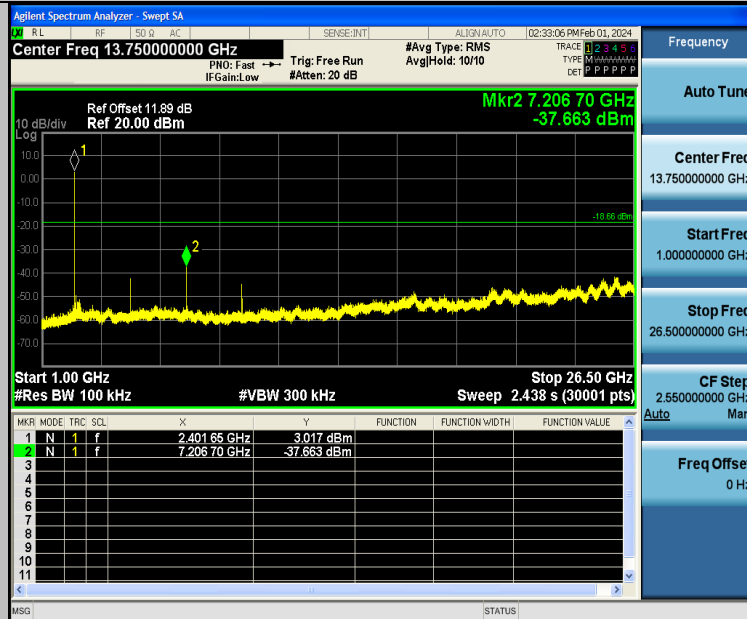
2DH5-Ant2-2480-1000~26500-PASS



3DH5-Ant2-2402-0~Reference-PASS



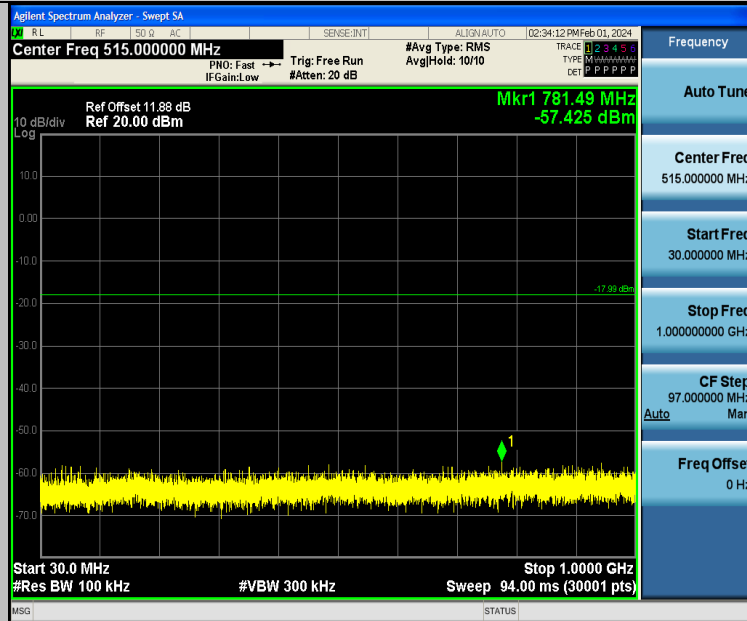
3DH5-Ant2-2402-30~1000-PASS



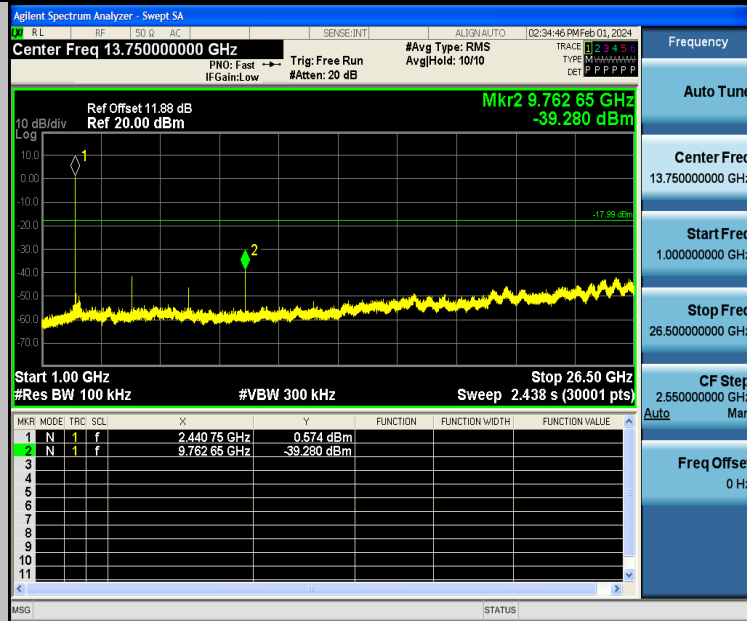
3DH5-Ant2-2402-1000~26500-PASS



3DH5-Ant2-2441-0~Reference-PASS



3DH5-Ant2-2441-30~1000-PASS

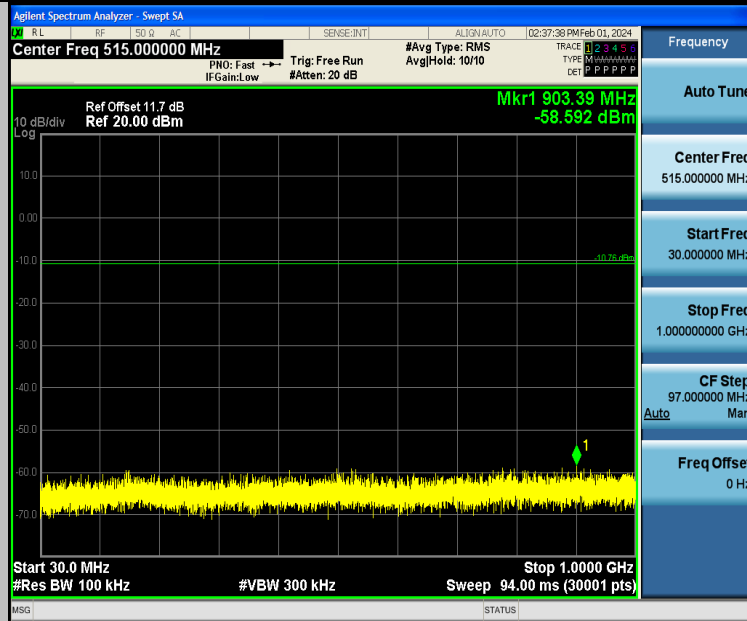


3DH5-Ant2-2441-1000~26500-PASS



3DH5-Ant2-2480-0~Reference-PASS

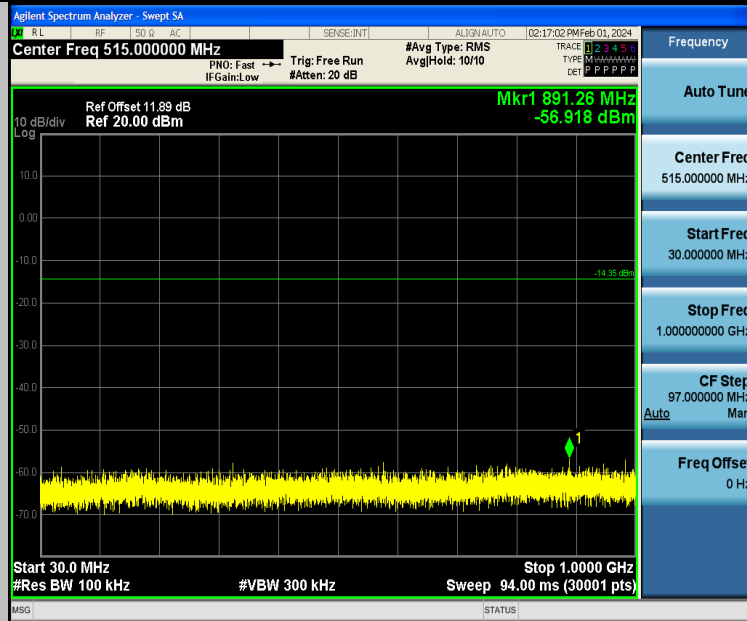




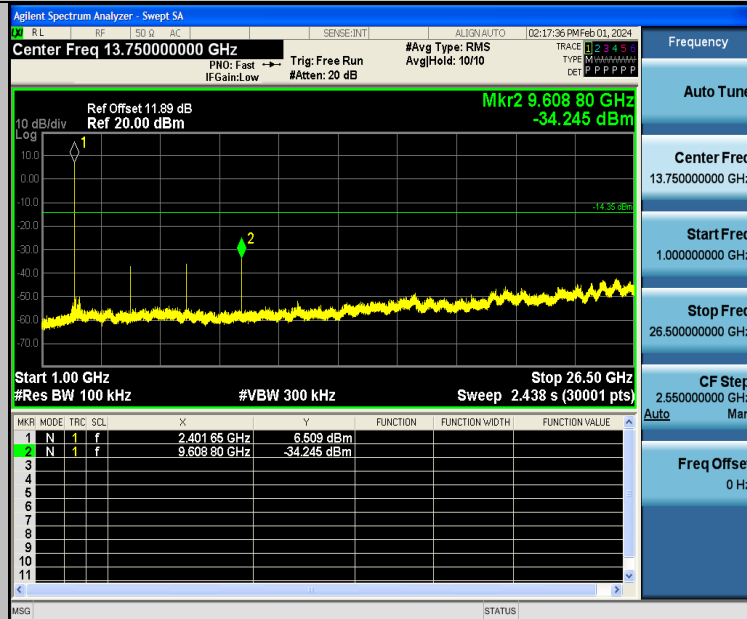
3DH5-Ant2-2480-30~1000-PASS



DH5-Ant2-2402-0~Reference-PASS



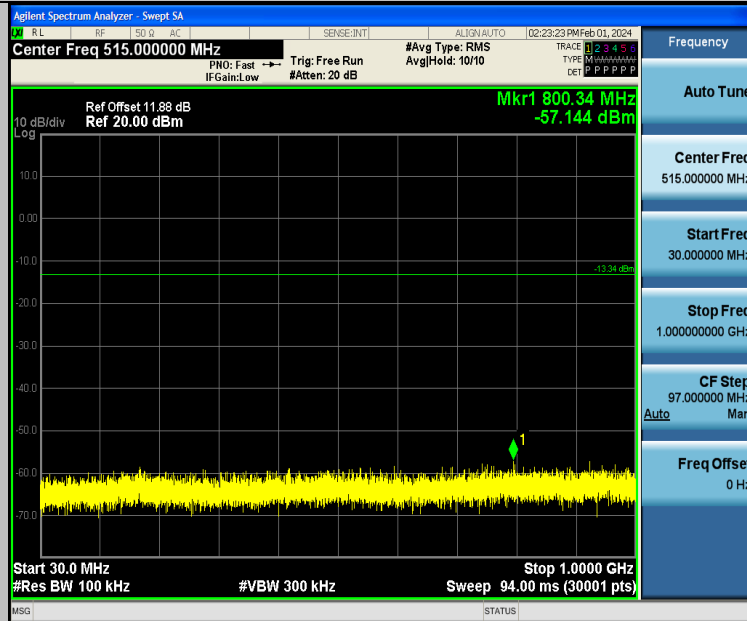
DH5-Ant2-2402-30~1000-PASS



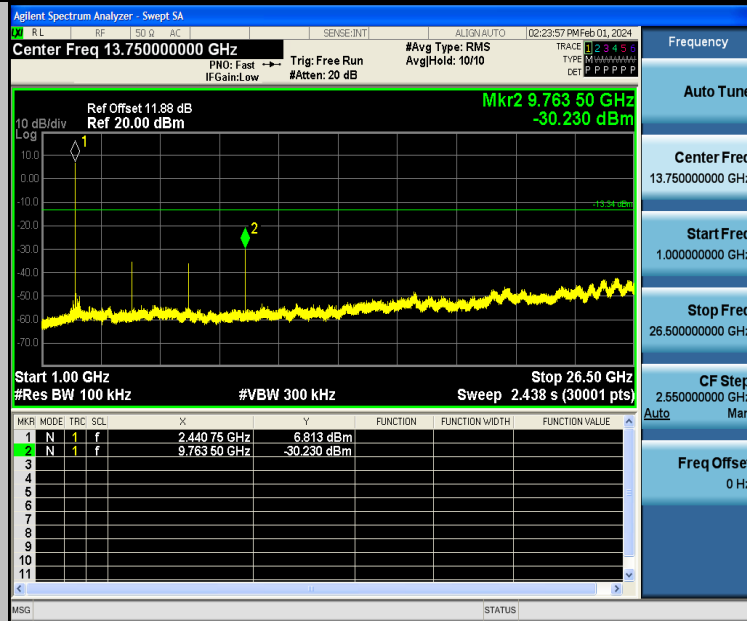
DH5-Ant2-2402-1000~26500-PASS



DH5-Ant2-2441-0~Reference-PASS



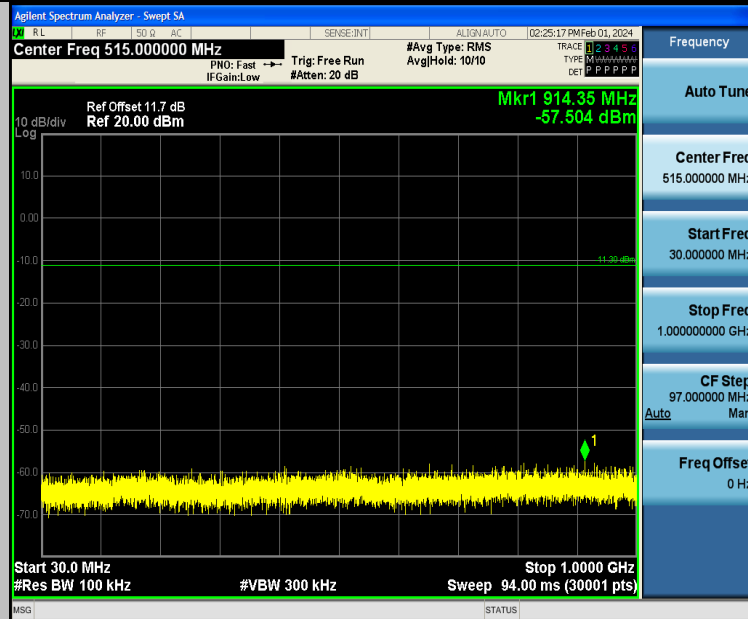
DH5-Ant2-2441-30~1000-PASS



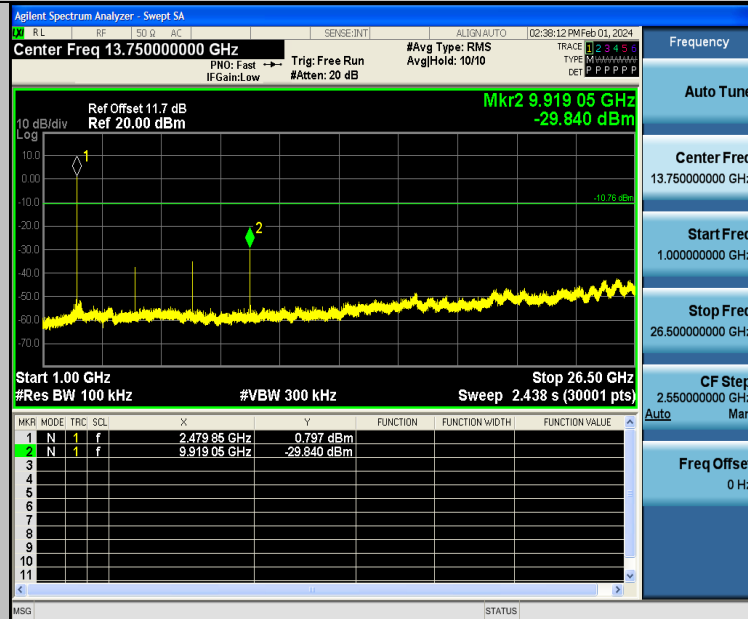
DH5-Ant2-2441-1000~26500-PASS



DH5-Ant2-2480-0~Reference-PASS



DH5-Ant2-2480-30~1000-PASS



3DH5-Ant2-2480-1000~26500-PASS

## 14 Antenna Requirement

### 14.1 Test Standard and Requirement

Test Standard	FCC Part15 Section 15.203 /247(c)
Requirement	<p>1) 15.203 requirement:</p> <p>An intentional radiator shall be designed to ensure that no antenna other than that furnished by the responsible party shall be used with the device. The use of a permanently attached antenna or of an antenna that uses a unique coupling to the intentional radiator, the manufacturer may design the unit so that a broken antenna can be replaced by the user, but the use of a standard antenna jack or electrical connector is prohibited.</p> <p>2) 15.247(c) (1)(i) requirement:</p> <p>Systems operating in the 2400-2483.5 MHz band that is used exclusively for fixed. Point-to-point operations may employ transmitting antennas with directional gain greater than 6dBi provided the maximum conducted output power of the intentional radiator is reduced by 1 dB for every 3 dB that the directional gain of the antenna exceeds 6 dBi.</p>

### 14.2 Antenna Connected Construction

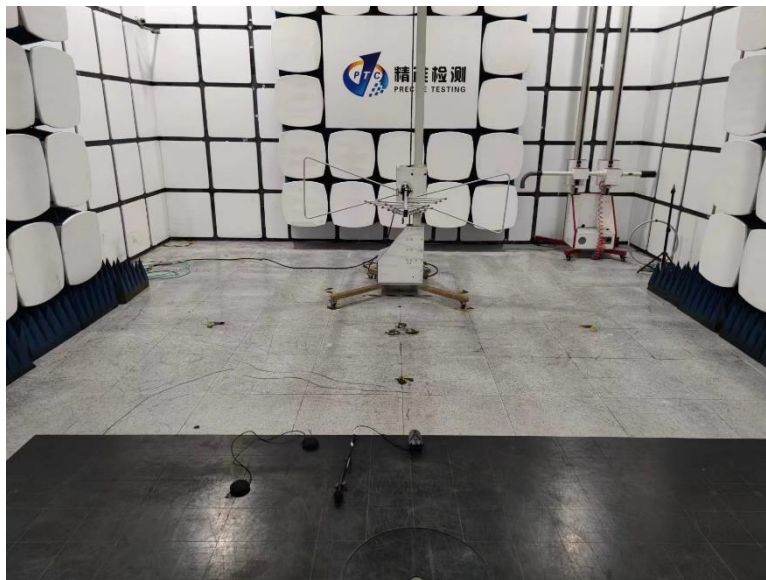
The antenna is FPC Antenna which permanently attached, and the best case gain of the antenna are Ant1: 2.09 dBi; Ant2: 3.86 dBi. It complies with the standard requirement.

## 15 APPENDIX I -- TEST SETUP PHOTOGRAPH

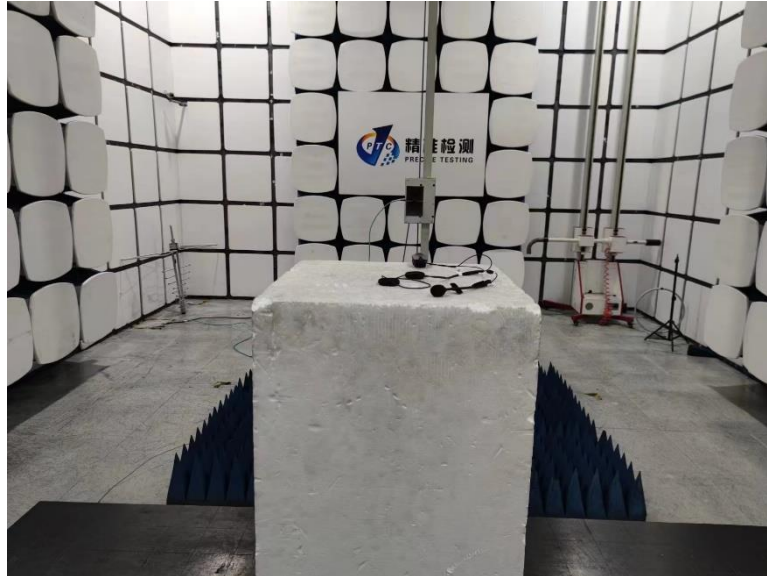
Conducted Emissions



Radiated Emissions  
From 30M-1GHz

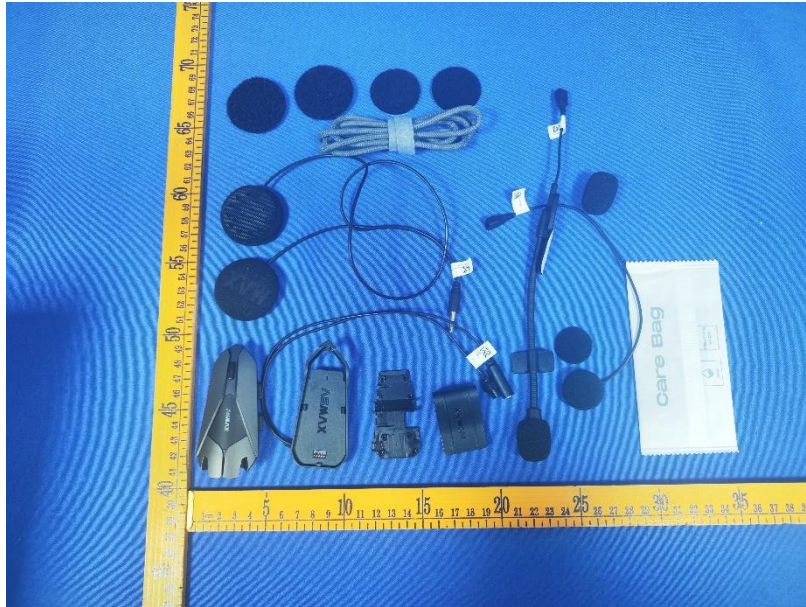


Above 1GHz



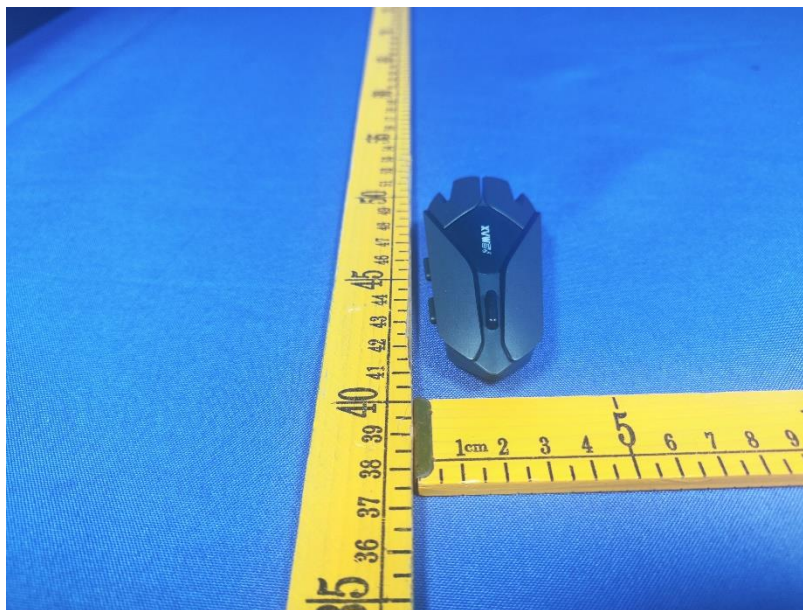


**16 APPENDIX II -- EUT PHOTOGRAPH**











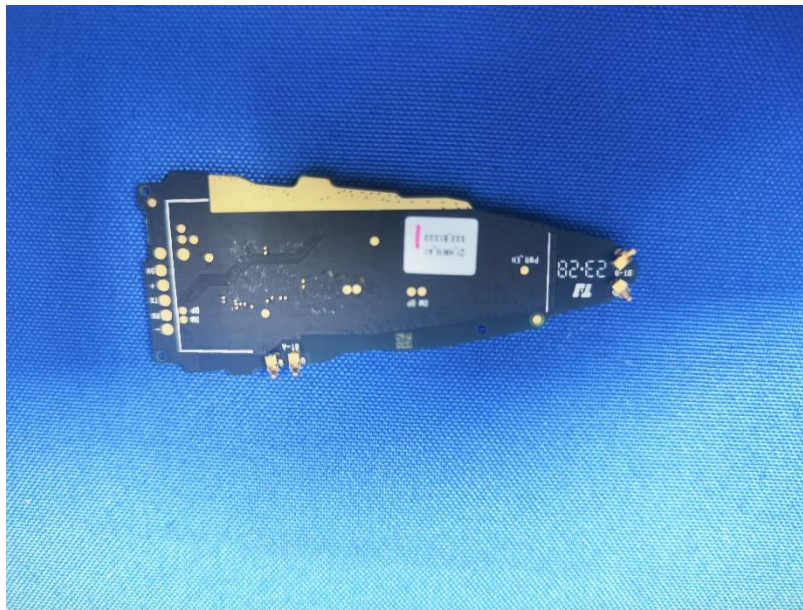
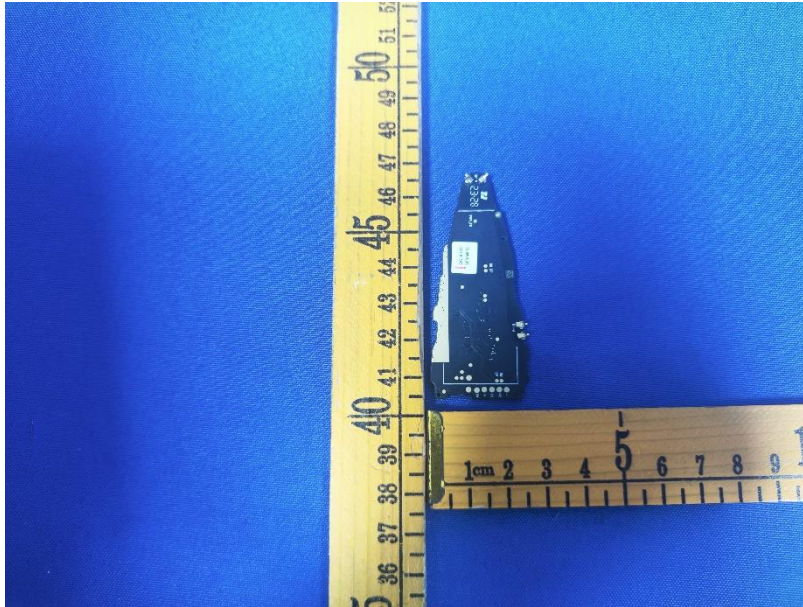




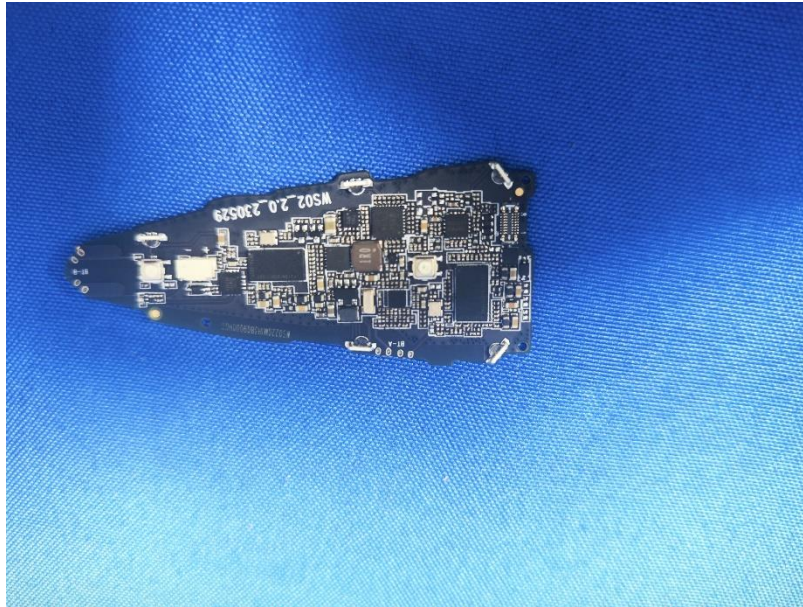












**\*\*\*\*\*THE END REPORT\*\*\*\*\***