



FCC Warning

This device complies with Part 15 of the FCC Rules. Operation is subject to the following two conditions:

- (1) This device may not cause harmful interference, and (2) this device must accept any interference received, including interference that may cause undesired operation.

NOTE 1: This equipment has been tested and found to comply with the limits for a Class B digital device, pursuant to part 15 of the FCC Rules. These limits are designed to provide reasonable protection against harmful interference in a residential installation. This equipment generates, uses and can radiate radio frequency energy and, if not installed and used in accordance with the instructions, may cause harmful interference to radio communications. However, there is no guarantee that interference will not occur in a particular installation. If this equipment does cause harmful interference to radio or television reception, which can be determined by turning the equipment off and on, the user is encouraged to try to correct the interference by one or more of the following measures:

- Reorient or relocate the receiving antenna.
- Increase the separation between the equipment and receiver.
- Connect the equipment into an outlet on a circuit different from that to which the receiver is connected.
- Consult the dealer or an experienced radio/TV technician for help.

NOTE 2: Any changes or modifications to this unit not expressly approved by the party responsible for compliance could void the user's authority to operate the equipment.

The device has been evaluated to meet general RF exposure requirement. The device can be used in portable exposure condition without restriction.

CW61

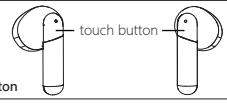
The Earphones and the Touch Button

How to Connect:

- 1. Earphones Power On/Power Off: Open the cover of the charging case, and the earphones will automatically power on. Close the cover of the charging case to power off the earphones.
2. Pairing (First Use): Turn on the wireless feature on your mobile phone. Open the lid of the charging case, and the earphones will automatically power on. Search for the wireless device named "CW61" and click to connect. After the connection is successful, the earphones will prompt "Connected".

How to Use

- Play/Pause: Click the left/right earphone touch button.
Previous/Next Song: Press the left earphone touch button for 2 seconds to play the previous song; Press the right earphone touch button for 2 seconds to play the next song.
Siri function: In the connected state, triple-tap the left/right earphone touch button to activate the Siri function.
Answer/Hang up: When the first call comes in, click the touch button on the left/right earphone to answer; During the call, press the left/right earphone touch button for 2 seconds to hang up.
Reject a Call: When the first call comes in, press the touch button on the left/right earphone for 2 seconds.
Secure Pairing: If the wireless device connected to the mobile phone is lower than wireless version 3.0, enter the default security code "0000" when the password prompt appears to pair with your mobile phone.
Automatic Power-Off: To save electricity, when the earphones are disconnected from the mobile phone, they will automatically power off after 5 minutes.
Reset: To reset the earphone, place it back into the charging case.



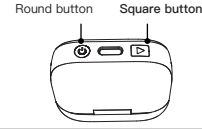
The video page-turning/Shooting function of the charging case

How to Connect

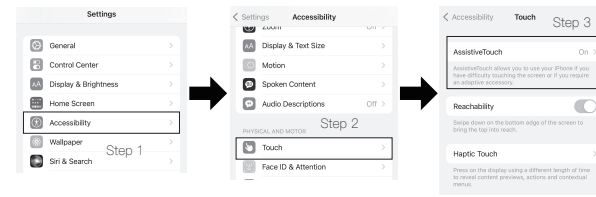
- 1. Charging Box Power On/Power Off: Press and hold the round button for 2 seconds to power-on; Press and hold the round button for 5 seconds to power-off.
2. Pairing (First use): Turn on the wireless feature on your mobile phone. Turn on the charging box. Search for the wireless device named "CW61 FanYe" and click to connect.

How to Use

- Play/Pause: Click the round button when the video is playing.
Volume +/-: Double-click the round button to increase the volume when the video is playing.
Take a Photo: When the camera is on, double-click the round button to capture a picture.
Video Recording Start/Pause: When recording, double-click the round button to start/pause.
Previous Video/Next Video: When the video is playing, short press the square button to play the next video. Three clicks on the square button to play the previous video.
Like: When the video is playing, double-click the square button to like the video.



iPhone Usage Tutorial: Settings -- Accessibility -- Touch -- AssistiveTouch -- Enable AssistiveTouch -- Adjust the tracking sensitivity to the middle position. Refer to the images below for guidance:



*After completing step 4, scroll down the page to locate a progress bar that tracks sensitivity. Adjust it to the middle position, if possible, for optimal usage. If turning the page normally becomes challenging, fine-tune the tracking sensitivity to the left or right as needed. After the adjustment, close the AssistiveTouch feature. Reopen AssistiveTouch to apply the changes. Note: Apple system iOS13 or iOS14 and other older versions do not have tracking sensitivity display. The progress bar with tracking sensitivity must be operated according to step 5.

How to Charge

Charging the Charging Case: Use a low-power charger below 5V-1A to charge. When charging, The red light flashes. When fully charged, the red light stays steady. (The charging case takes about 2 hours to be fully charged).

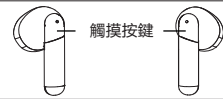
Charging the Earphones: Place the left and right earphones correctly in the charging case. Close the charging case, and the red light on the headset will illuminate. When fully charged, the red light turns off. The earphones takes about 1.5 hours to fully charge. A fully charged charging case can provide about 3 cycles of charging for the earphones.

Low Battery Indication: When the earphones battery is low, a voice prompt of "Battery low" will occur once every minute. Note: If there is no display on the charging box's light, it indicates that the power has been completely exhausted. Please use this product after a full charge.



CW61

耳機的使用功能



- 如何連接:
1. 耳機開 / 關機: 充電盒打開蓋子, 耳機自動開機; 充電盒合上蓋子, 耳機自動關機。
2. 配對 (初次使用): 打開手機上的無線, 充電盒打開蓋子後, 搜索無線設備 "CW61" 點擊連接, 連接成功後耳機提示 "Connected"。

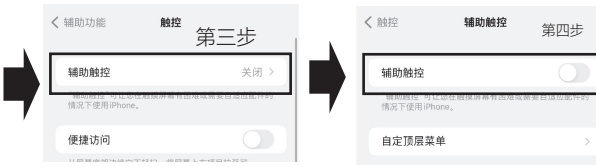
- 如何使用:
- 播放/暫停: 單擊左/右耳觸摸按鍵。
- 上一曲/下一曲: 長按2秒左耳觸摸按鍵上一曲; 長按2秒右耳觸摸按鍵下一曲。
- Siri功能: 在連接狀態下, 三擊左/右耳觸摸按鍵喚醒Siri功能。
- 接聽/掛斷電話: 第一個來電打進, 單擊左耳或右耳觸摸按鍵接聽; 雙方通話中, 長按2秒左耳或右耳觸摸按鍵掛斷。
- 拒接電話: 第一個來電打進, 長按2秒左耳或右耳觸摸按鍵。
- 安全配對: 當手機連接無線設備在低子無線版本3.0時, 當彈出輸入密碼時, 輸入默認安全碼 "0000" 與您的手機進行配對。
- 自動關機: 為了省電, 當耳機與手機斷開連接時, 耳機在 10分鐘後會自動關機。
- 將您的耳機復位: 如需將耳機復位, 請將耳機放回充電盒內充電即可復位。

充電盒的視頻翻頁/拍攝功能

- 如何連接:
1. 充電盒開 / 關機: 長按圓形鍵2秒開機; 長按圓形鍵5秒開機。
2. 配對 (初次使用): 打開手機上的無線, 充電盒開機, 搜索無線設備 "CW61 FanYe" 點擊連接。

- 如何使用:
播放/暫停: 視頻正在播放時, 點擊圓形按鍵。
音量+播放視頻時, 雙擊圓形按鍵, 增大音量。
拍攝: 當相機開啓時, 雙擊圓形按鍵即可拍攝。
錄像開始/暫停/錄像時, 雙擊圓形按鍵開始/暫停。
上一段視頻/下一段視頻: 播放視頻時, 短按方形鍵, 播放下一段視頻。點擊三次方形按鍵播放上一個視頻。
點贊: 視頻正在播放時, 雙擊方形按鍵表示點贊。

iPhone手機使用教程: 打開設置--輔助功能--觸控--輔助觸控--打開輔助觸控--調整跟蹤靈敏度。如下圖所示:



*完成第4步後, 往下拉頁面就會看到跟蹤靈敏度的進度條, 這個進度條拉到居中的位置來使用。如出現無法正常進行抖音翻頁, 可適當的往左或右微調, 微調後重新關閉輔助觸控再打開使用即可。注意: 蘋果系統iOS13或者iOS14等舊版本沒有跟蹤靈敏度顯示的不可做。有跟蹤靈敏度進度條時必須按照第五步來操作。

- 如何充電:
- 給充電盒充電: 請使用5V-1A以下的小功率充電器充電。在充電時, 紅色閃爍。充滿電時, 紅色常亮(充電盒充滿電的時間約為2小時)。
- 給耳機充電: 請您分別將左 / 右耳機正確地放入充電盒中, 然後合上充電盒, 耳機紅色燈亮起, 當耳機充滿電時, 紅色燈會熄滅; 耳機充滿電的時間大約為1.5小時。已充滿電的充電盒, 可給耳機提供約3個循環的充電。
- 低電量指示: 當耳機出現低電量時, 每分鐘提示一次語音 "Battery low"。
- 注意: 當充電盒燈無任何顯示時, 表明電量已完全耗盡, 請充滿電後再使用本品。



Table with 10 empty rows for additional information or notes.