

1. Antenna Description:

Antenna type	PIFA antenna
Model	AMX200
Frequency range	5745-5825MHz
Manufacturer	AimeiSen(Dongguan) Technology Co., Ltd
ANT Peak Gain	2.17 dBi

2. Antenna Photo:

Length :44.79mm
Width:7.53mm



3. Test Equipment & Conditions

3.1 Test instrument

VSWR is tested using Agilent E5071B connected to a hand mechanism, and the status is free space.

3.2 Test environment and methods

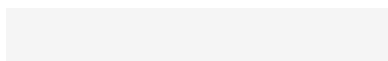
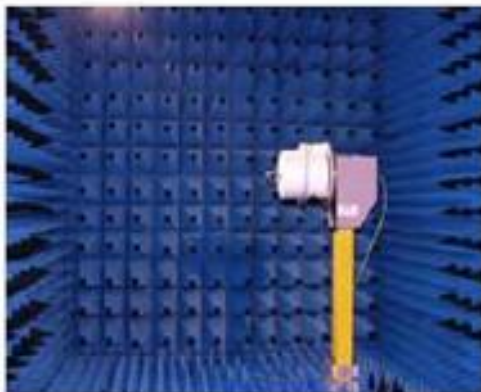
Dark room specifications: ETS-743

TD-SCDMA test equipment: StarPoint SP6010/Agilent 8960

LTE-TDD/FDD-SCDMA test equipment: StarPoint SP8011/CMW500

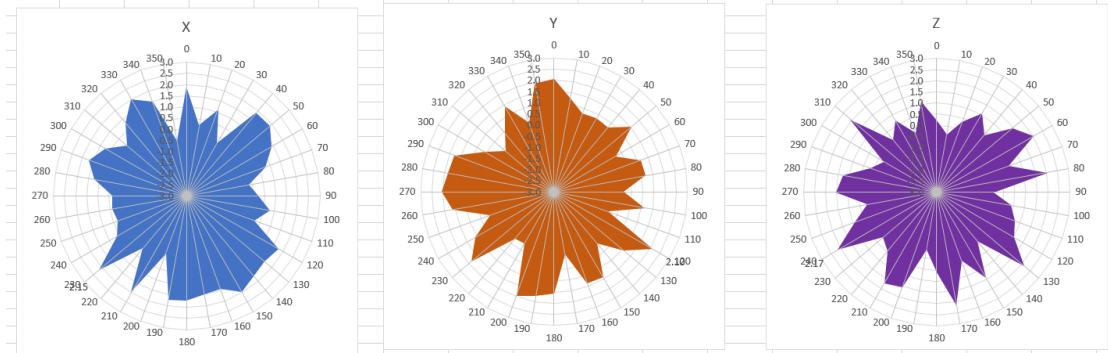
WCDMA/GSM/CDMA test equipment: Agilent 8960

Passive efficiency testing equipment: Agilent Technologies E5071B

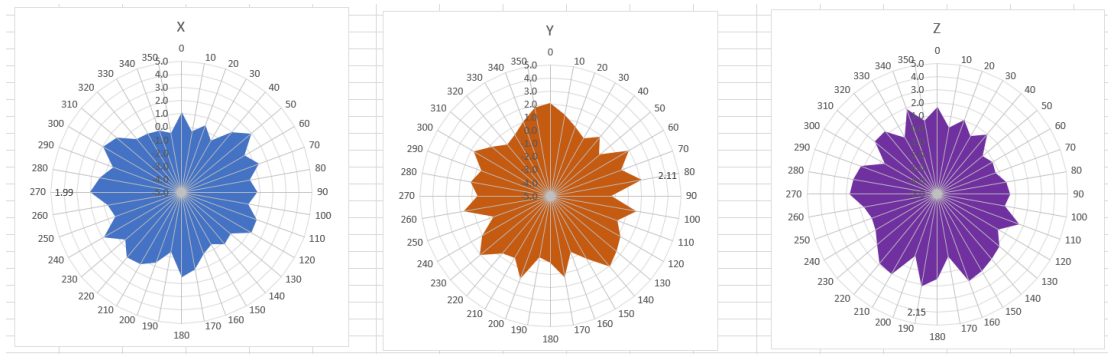


4 . Antenna Radiation Pattern

5745MHz



5785MHz



5825MHz

