

# Feature

- ※ High gain
- ※ Omani-directional
- ※ Wide bandwidth

# Application

- ※ WCDMA/LTE communication applications

## 2.4G&5G WiFi

				版本	修改内容	修改人	日期

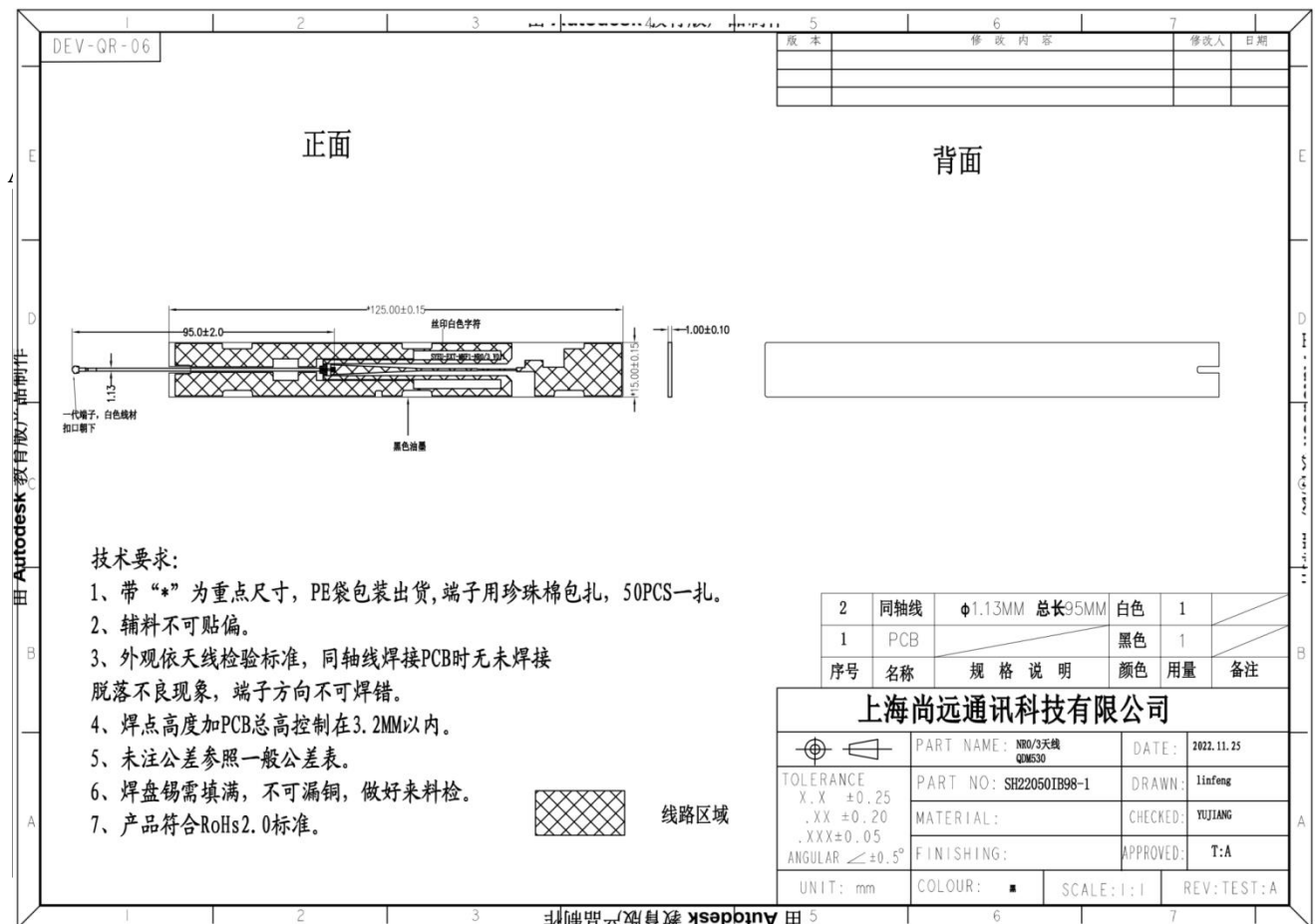
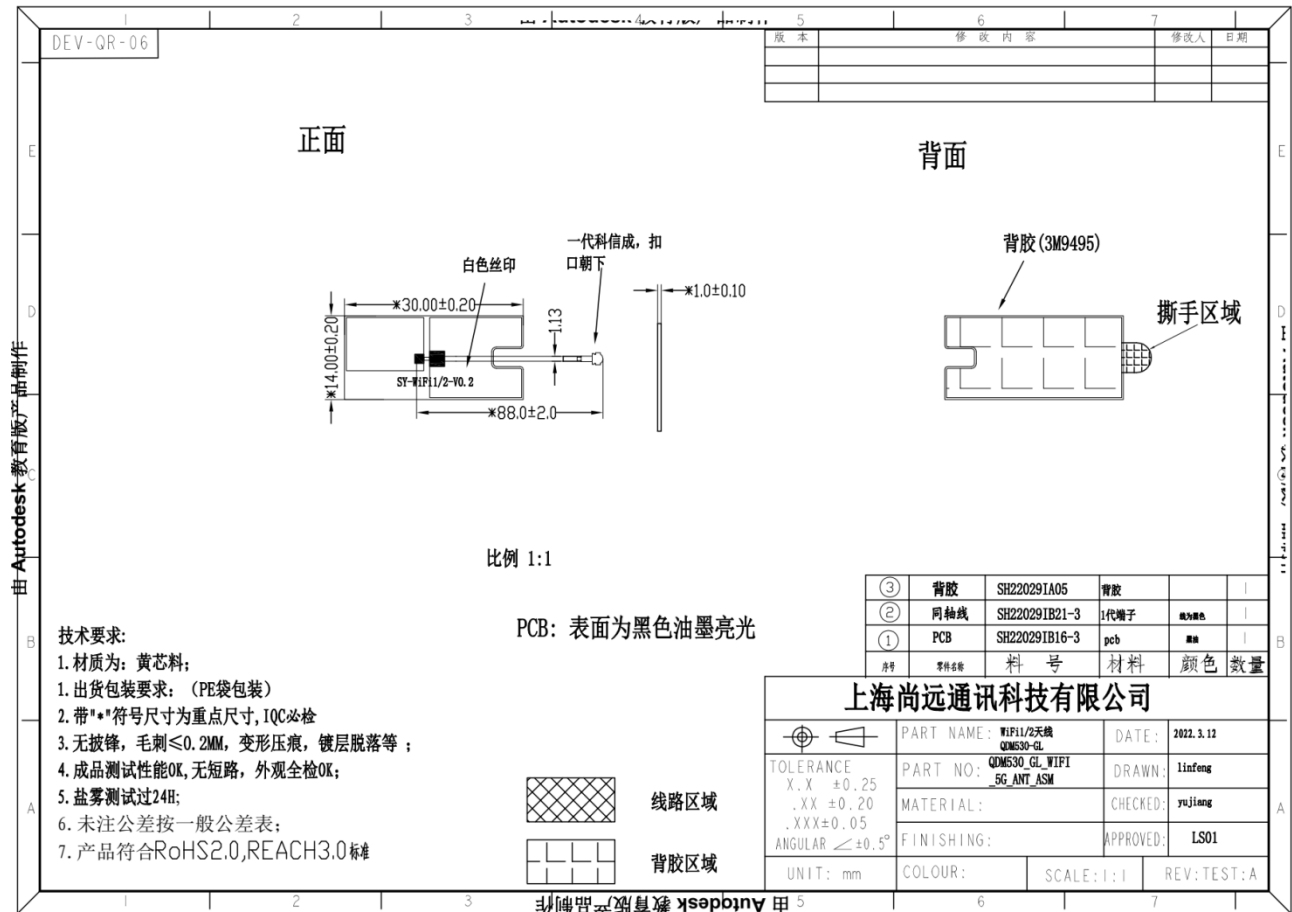
技术要求:

- 1: 带\*为重点检测尺寸;
- 2: 未注公差参照一般公差表;
- 3: ◆尺寸作参考, 以配为准
- 4: 托盘包装
- 5: 产品符合ROHS 2.0, REACH 3.0标准;

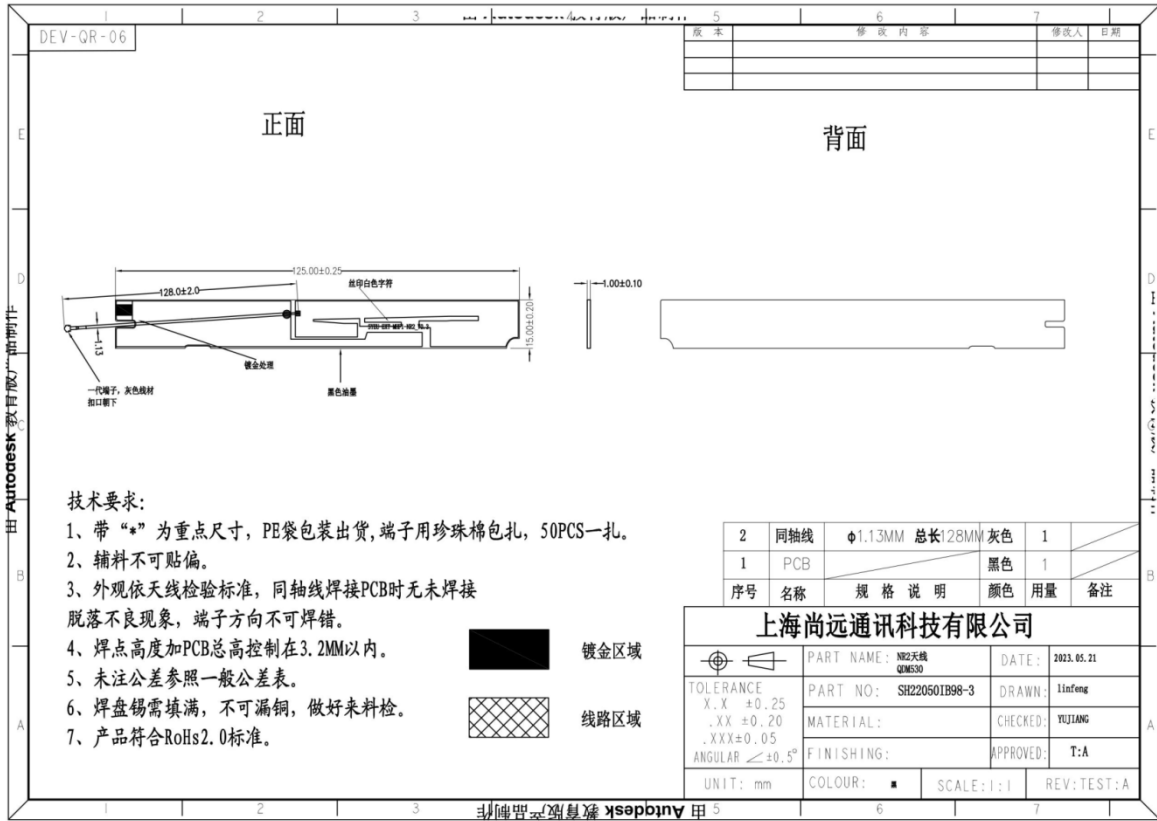
序号	零件名称	料号	材料	颜色	数量
⑤	支架	SH22029IB02	ABS+PC	白色	1
④	同轴线	SH22029IW21-5	1代端子	线为白色	1
③	PCB	SH22029IB16-5	PCB	黑漆	1
②	同轴线	SH22029IB21-4	1代端子	线为黑色	1
①	PCB	SH22029IB16-4	pcb	黑漆	1

上海尚远通讯技术有限公司

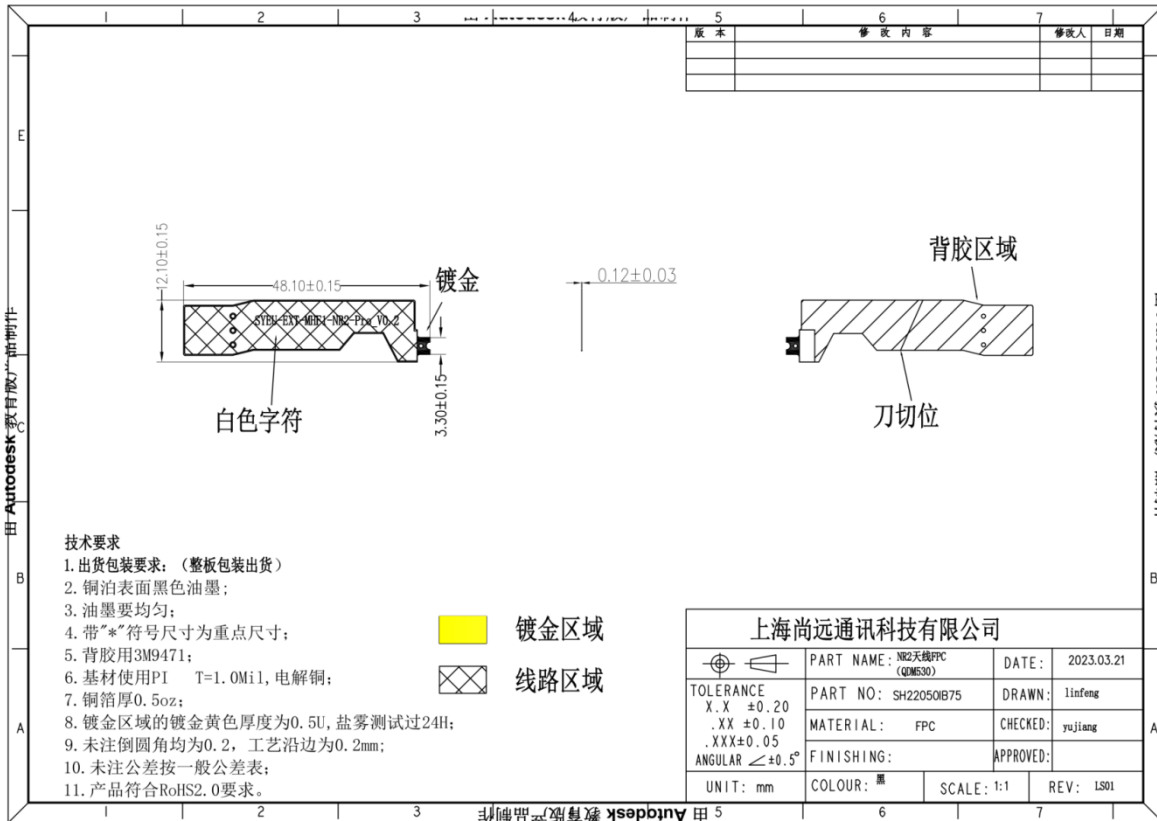
TOLERANCE X.X ±0.25 .XX ±0.20 .XXX±0.05 ANGULAR <±0.5°	PART NAME: 2.4G/5G天线 QMS30-GL	DATE: 2023.3.17
	PART NO: QMS30_GL_WIFI_ANT_ASM	DRAWN: LINFENG
	MATERIAL:	CHECKED: YUJIANG
	FINISHING:	APPROVED:
UNIT: mm	COLOUR: 本色	SCALE:
		REV: LS01

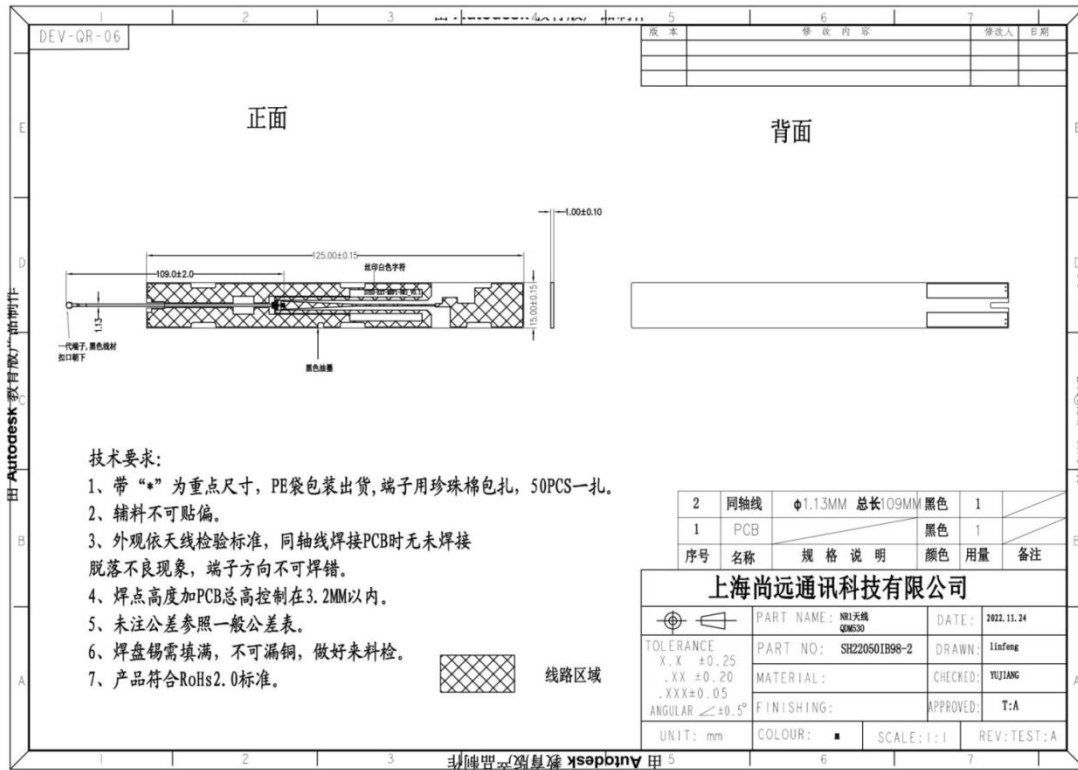


NR2



ANT5ANT6





### Electric Specifications

TYPE	QDM530	
Transmitter Frequency	NR :3300-4200MHz	
	LTE: 690 – 2690 MHz	
	WIFI: 2400-2500Mhz, 5150-5850Mhz	
Receiver Frequency	NR : 3300-4200 MHz	
	LTE: 690 – 2690 MHz	
	WIFI: 2400-2500Mhz, 5150-5850Mhz	
RF-Output Power (E.I.R.P)	NR: 23+/-3dBm	
	LTE:23+/-3dBm	
Antenna Gain	WCDMA I : 4.21dBi	
	WCDMA V : 3.57dBi	
	WCDMA VIII: 2.71dBi	
	LTE_B1: 4.21dBi	NR_B1: 4.21dBi
	LTE_B3: 3.94dBi	NR_B3: 3.94dBi
	LTE_B5: 3.57dBi	NR_B5: 3.57dBi
	LTE_B7: 4.85dBi	NR_B7:4.85dBi
	LTE_B8: 2.71dBi	NR_B8: 2.71dBi
	LTE_B20: 1.83dBi	NR_B20: 1.83dBi
	LTE_B28: 1.55dBi	NR_B28: 1.55dBi
LTE_B32: 1.47dBi	NR_B38: 4.85dBi	
LTE_B38: 4.85dBi	NR_B40: 3.84dBi	
LTE_B40: 3.84dBi	NR_B41: 4.85dBi	
LTE_B41: 4.85dBi	NR_B71:1.21dBi	

	LTE_B42: 4.67dBi LTE_B43: 4.67dBi	NR_B77:4.67dBi NR_B78: 4.67dBi

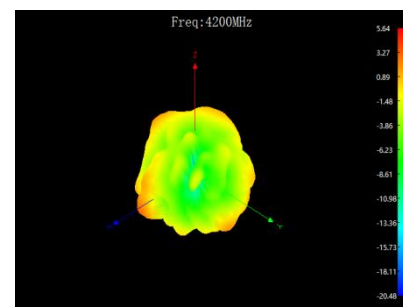
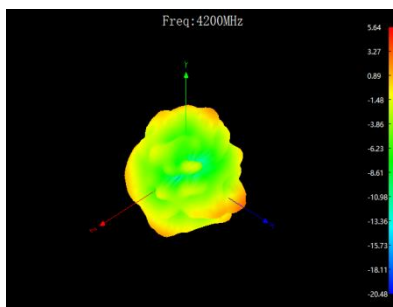
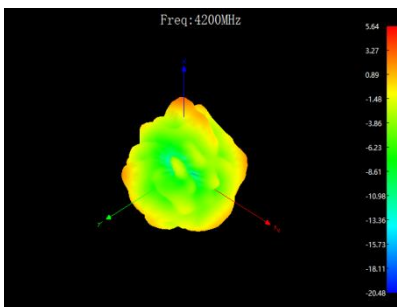
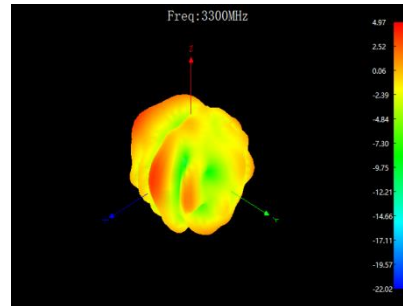
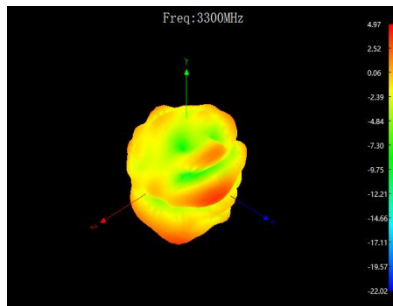
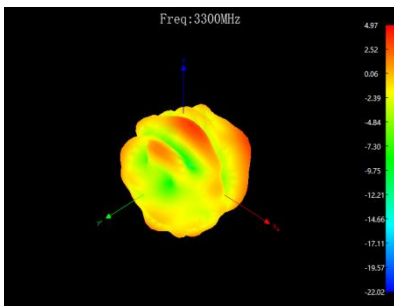
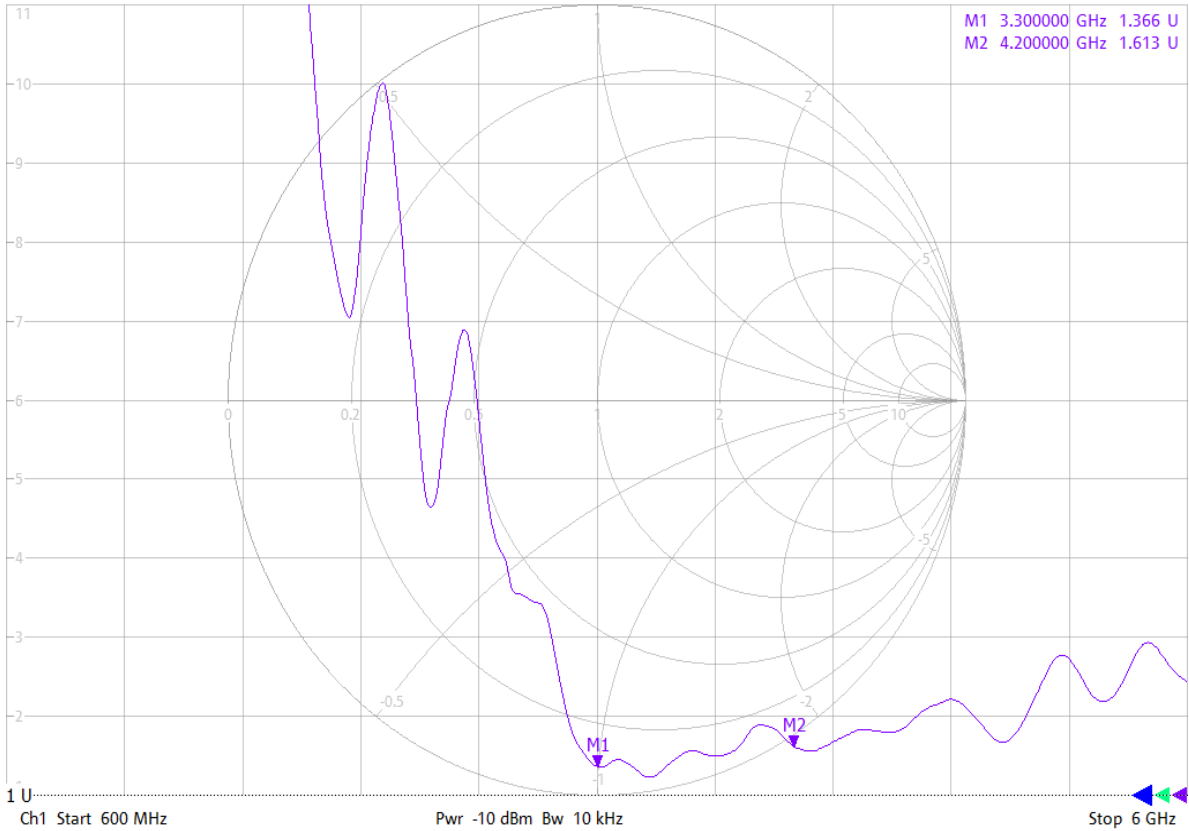
※ Antenna  
※ VSWR

ANTO

2/16/2023 10:53:22 AM  
1328.5170K92-100227-Mv

Trc1 S22 SWR 1 U/ Ref 1 U Invisible Trc2 S22 Smith 200 mU/ Ref 1 U Invisible  
Mem3[Trc1] S22 SWR 1 U/ Ref 1 U Invisible Mem4[Trc1] S22 SWR 1 U/ Ref 1 U Offs

1

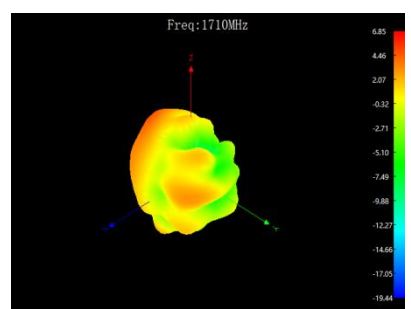
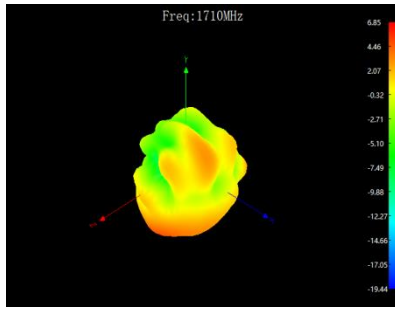
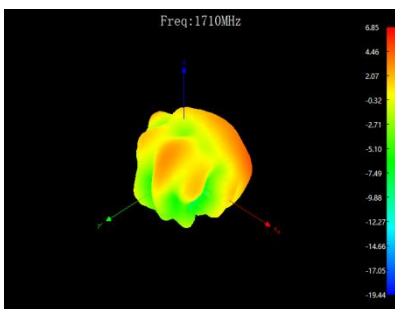
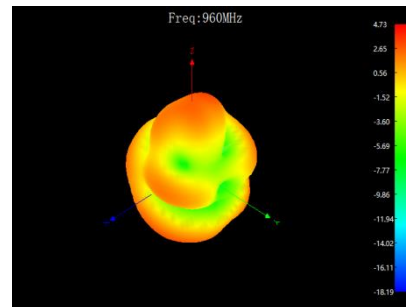
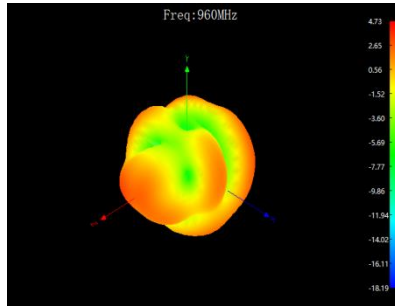
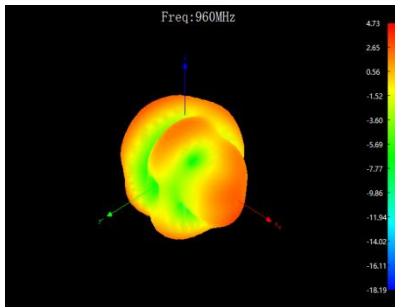
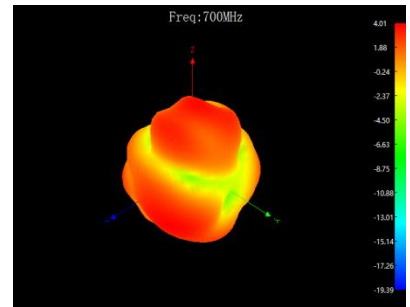
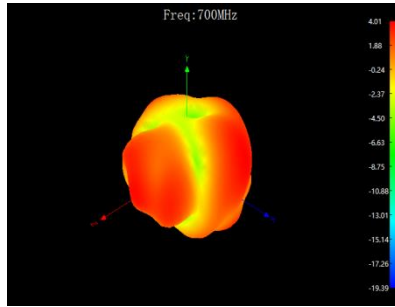
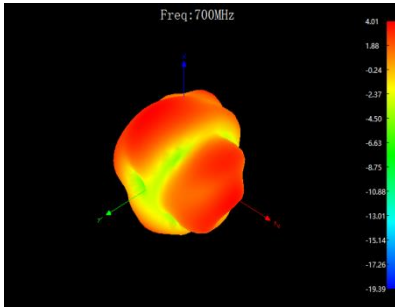
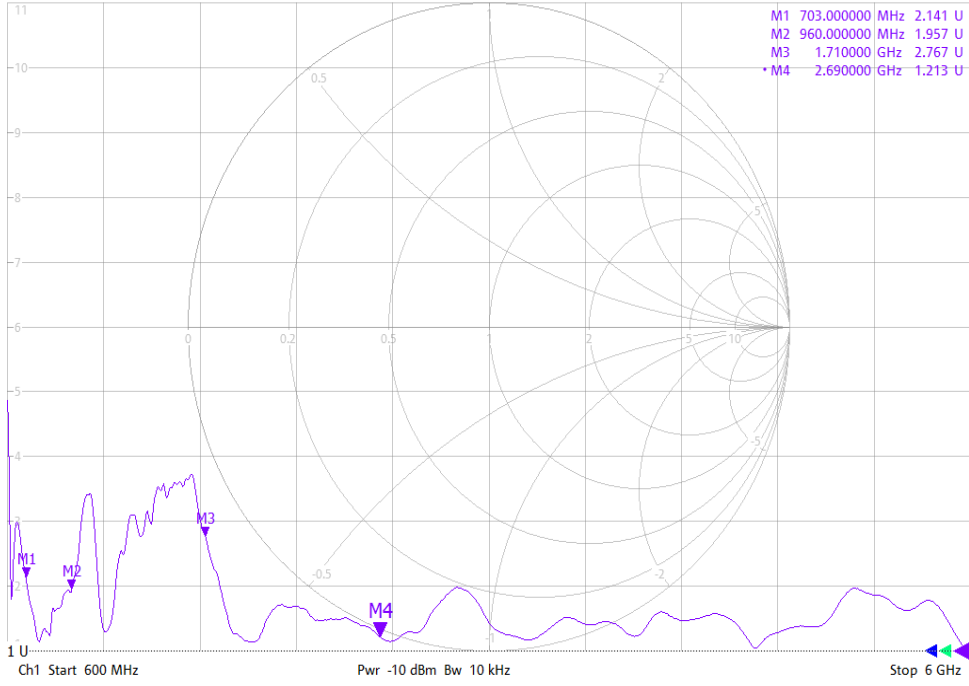


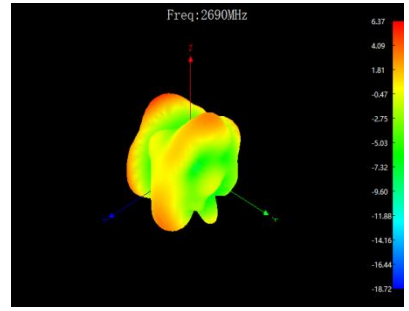
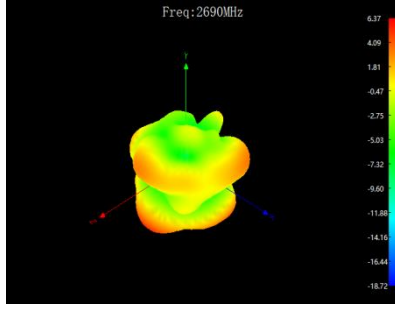
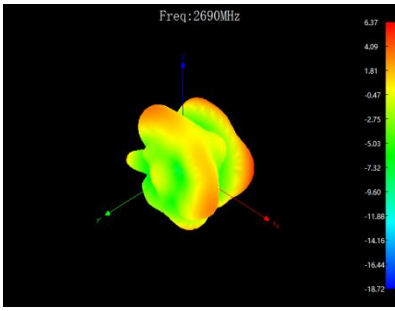
# ANT1

2/16/2023 10:58:01 AM  
1328.5170K92-100227-Mv

Trc1 S22 SWR 1 U/ Ref 1 U Invisible Trc2 S22 Smith 200 mU/ Ref 1 U Invisible  
Mem3[Trc1] S22 SWR 1 U/ Ref 1 U Invisible Mem4[Trc1] S22 SWR 1 U/ Ref 1 U Offs

1



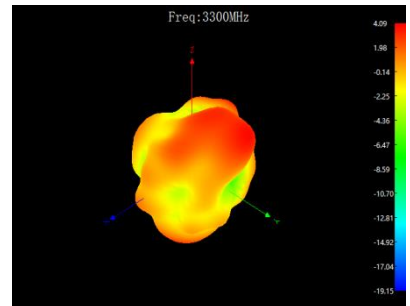
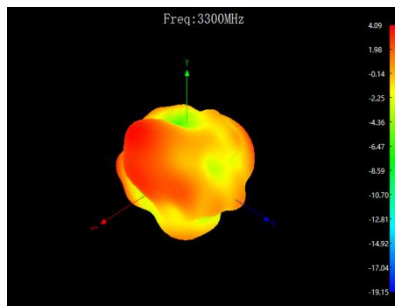
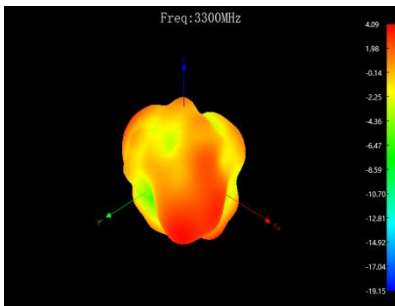
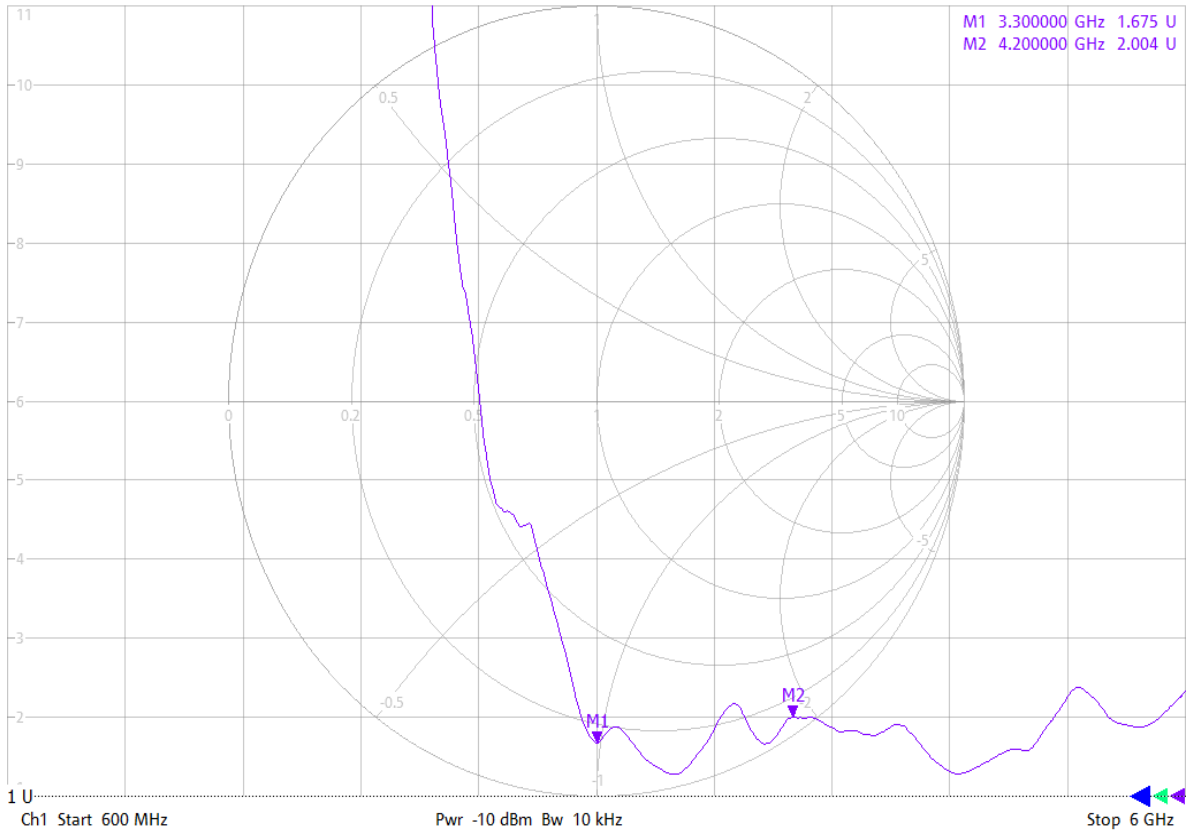


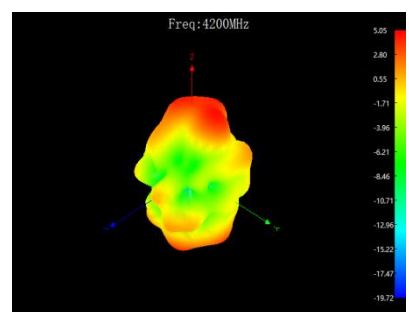
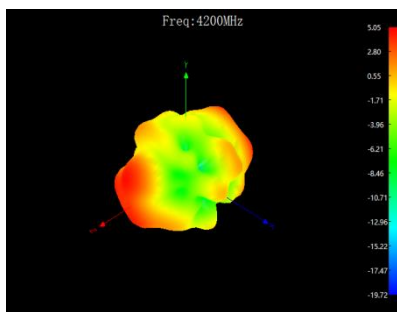
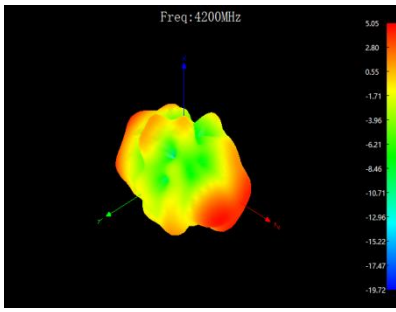
ANT2

2/16/2023 10:47:43 AM  
1328.5170K92-100227-Mv

Trc1 — S22 SWR 1 U/ Ref 1 U Invisible Trc2 — S22 Smith 200 mU/ Ref 1 U Invisible  
Mem3[Trc1] — S22 SWR 1 U/ Ref 1 U Invisible Mem4[Trc1] — S22 SWR 1 U/ Ref 1 U Offs

1



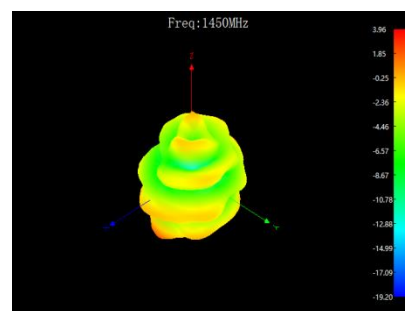
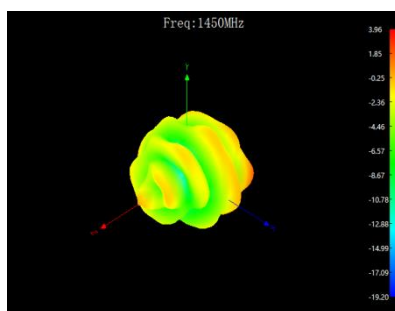
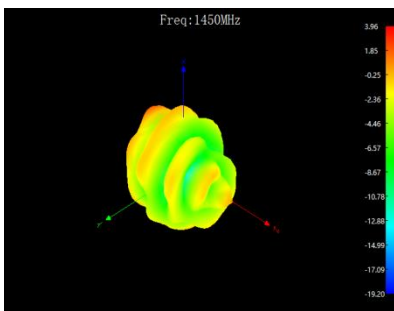
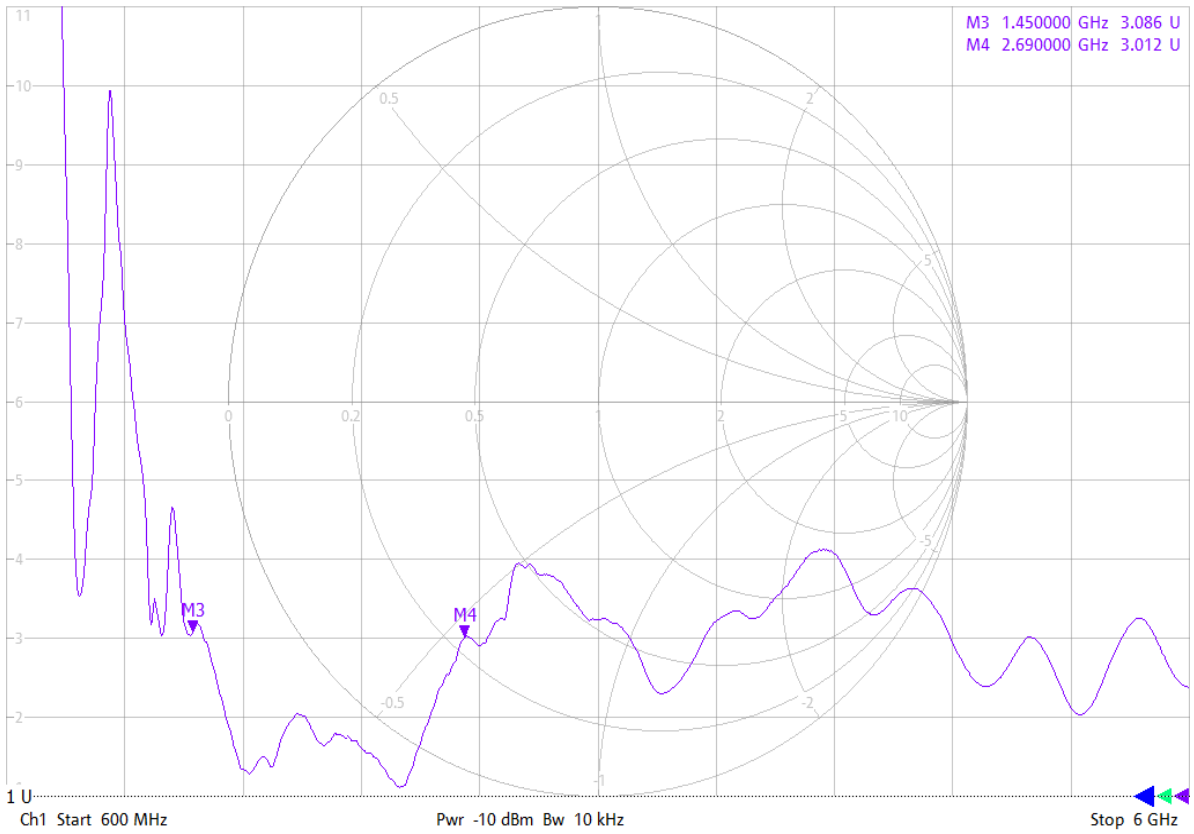


ANT3

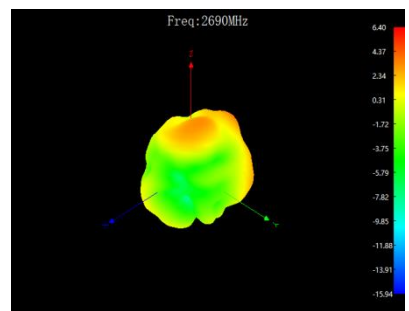
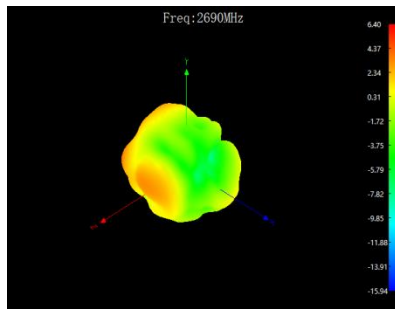
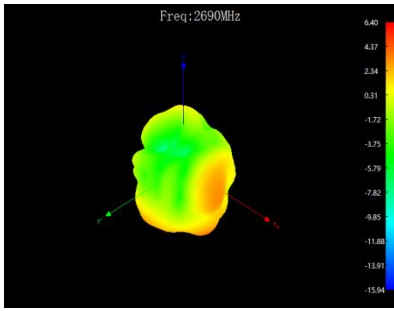
2/16/2023 10:55:57 AM  
1328.5170K92-100227-Mv

Trc1 — S22 SWR 1 U/ Ref 1 U Invisible Trc2 — S22 Smith 200 mU/ Ref 1 U Invisible  
Mem3[Trc1] — S22 SWR 1 U/ Ref 1 U Invisible Mem4[Trc1] — S22 SWR 1 U/ Ref 1 U Offs

1





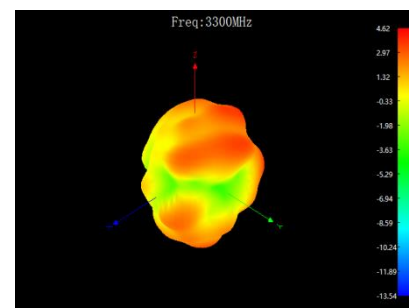
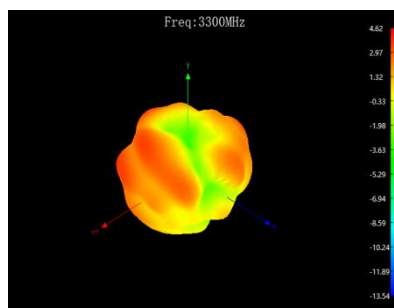
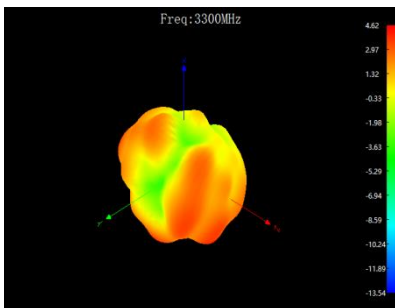
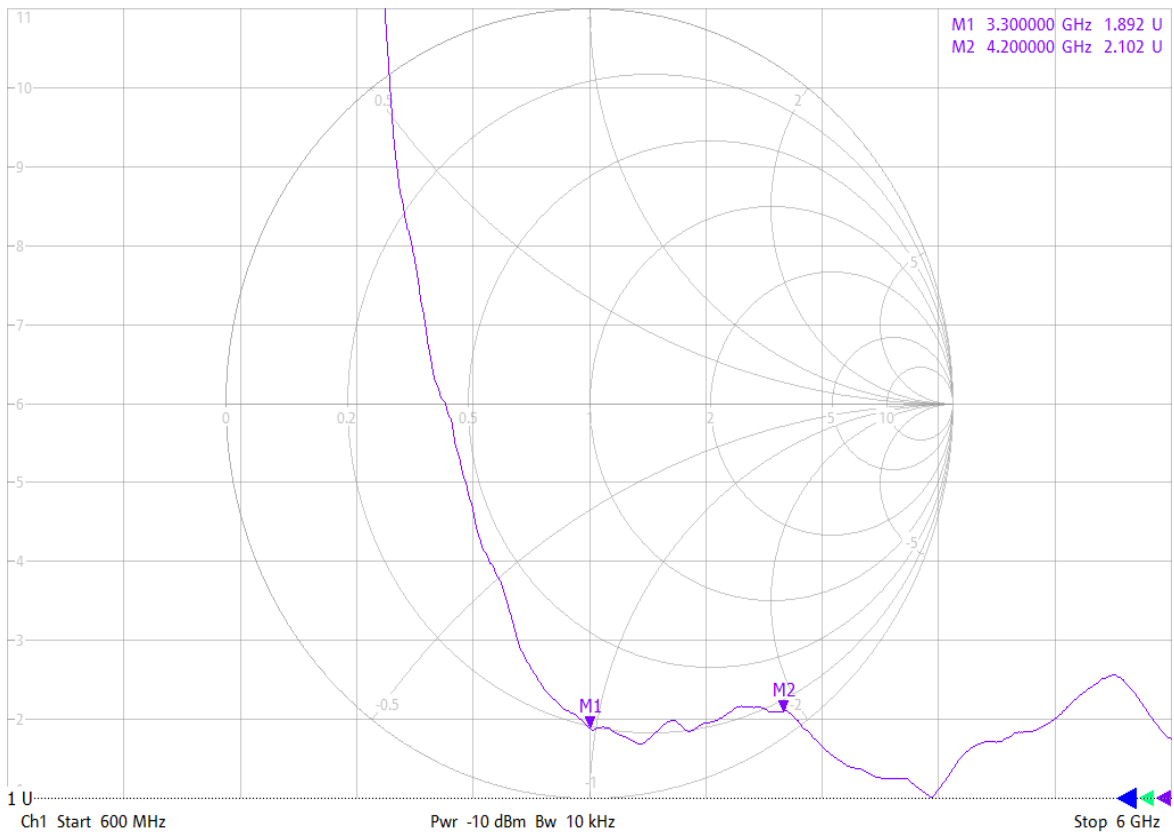


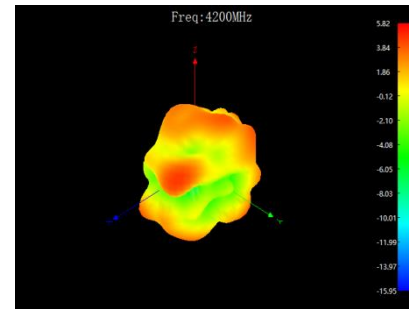
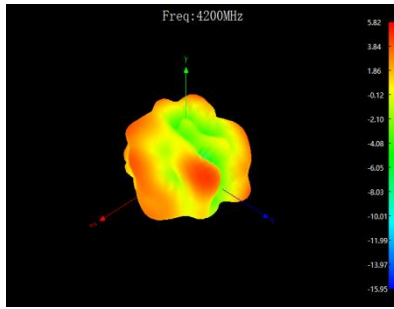
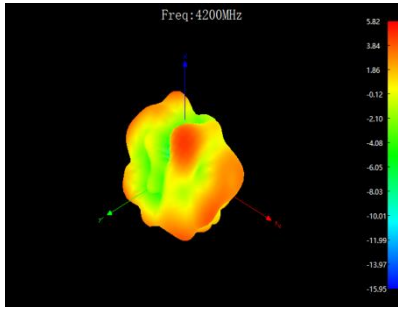
ANT4

2/16/2023 10:48:09 AM  
1328.5170K92-100227-Mv

Trc1 — S22 SWR 1 U/ Ref 1 U Invisible Trc2 — S22 Smith 200 mU/ Ref 1 U Invisible  
Mem3[Trc1] — S22 SWR 1 U/ Ref 1 U Invisible Mem4[Trc1] — S22 SWR 1 U/ Ref 1 U Offs

1



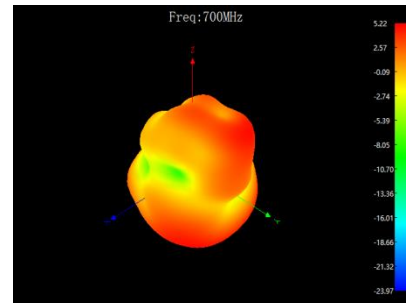
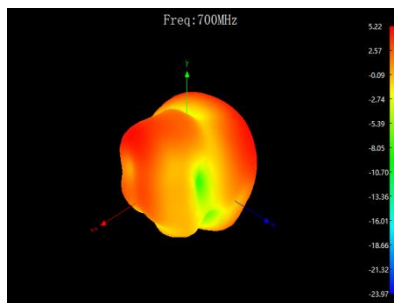
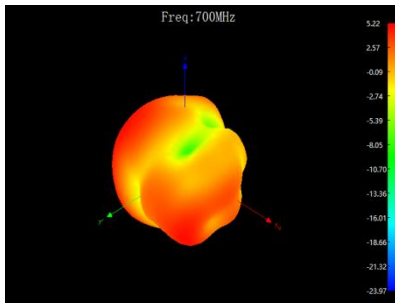
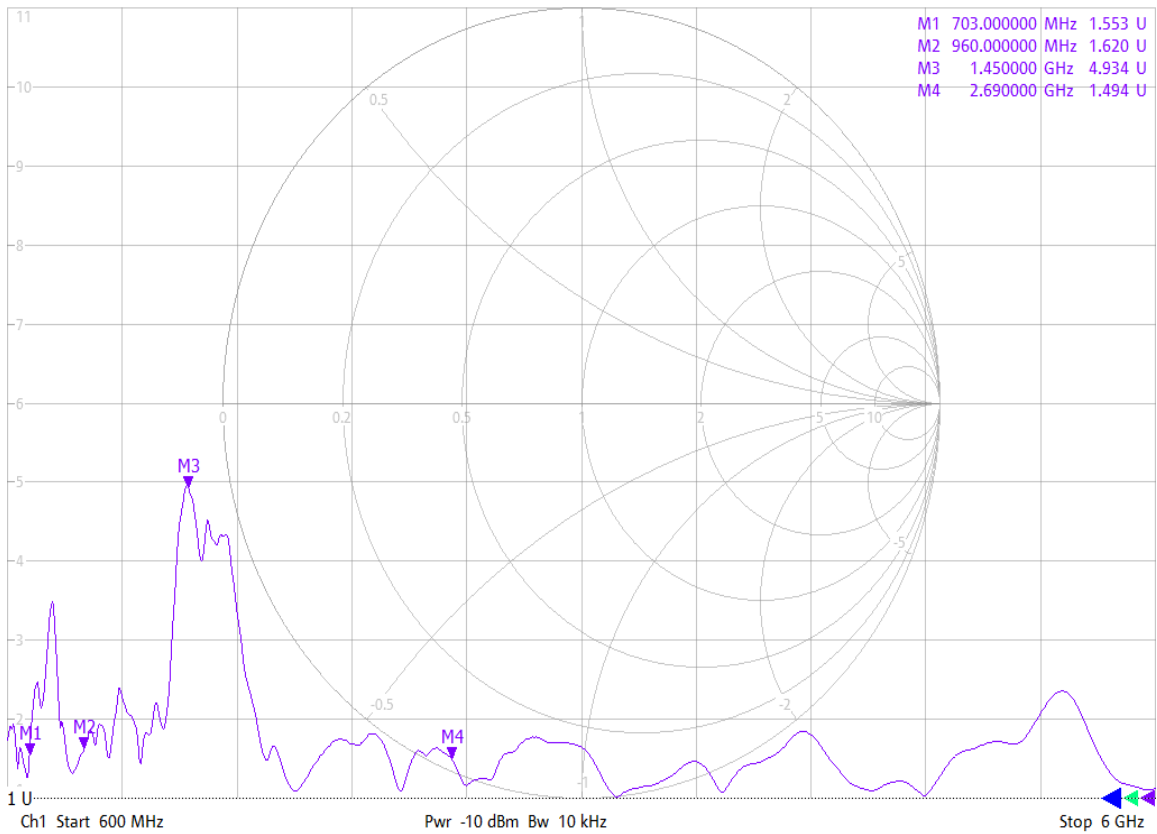


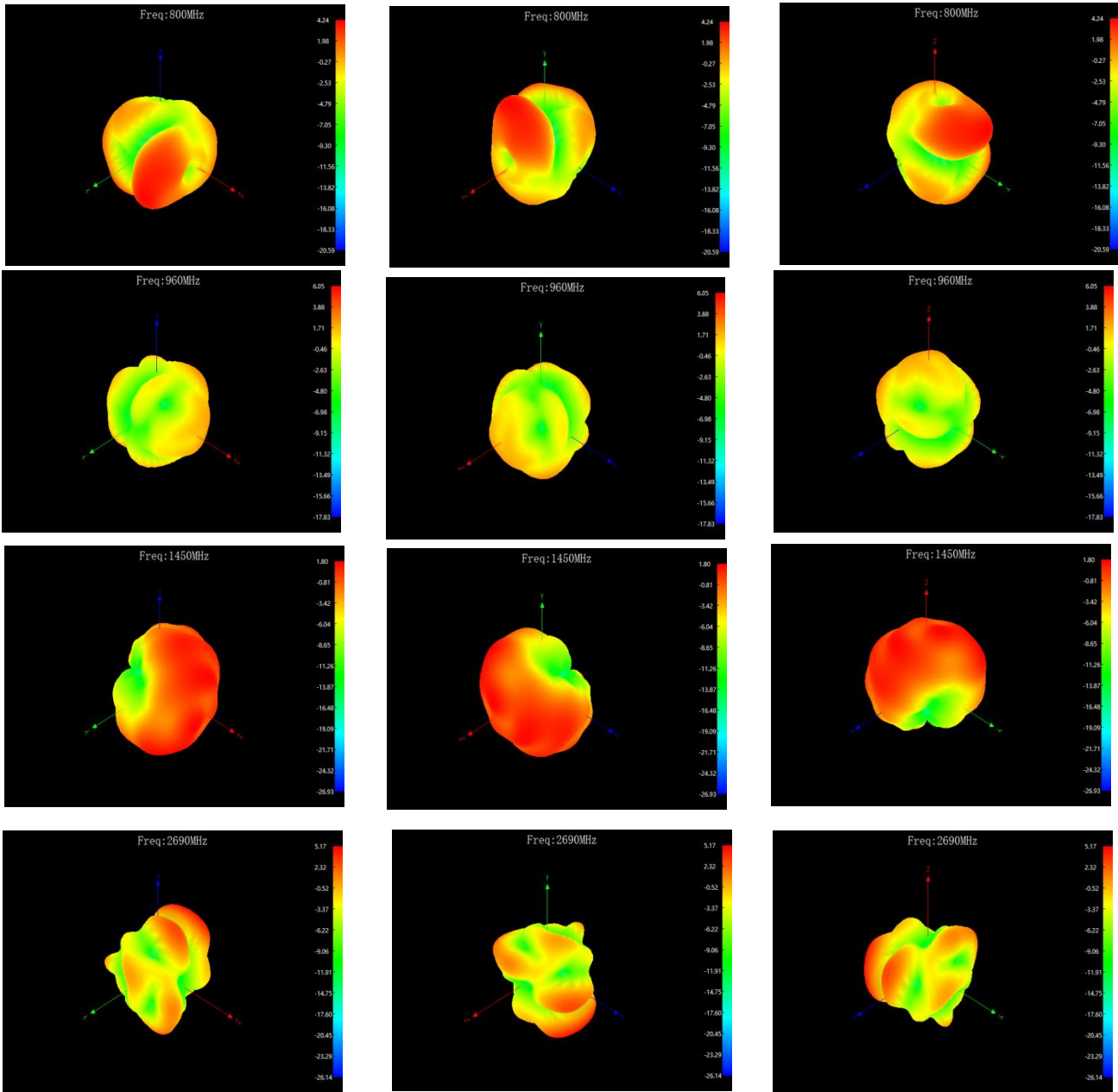
ANT5

2/16/2023 10:55:07 AM  
1328.5170K92-100227-Mv

Trc1 — S22 SWR 1 U/ Ref 1 U Invisible Trc2 — S22 Smith 200 mU/ Ref 1 U Invisible  
Mem3[Trc1] — S22 SWR 1 U/ Ref 1 U Invisible Mem4[Trc1] — S22 SWR 1 U/ Ref 1 U Offs

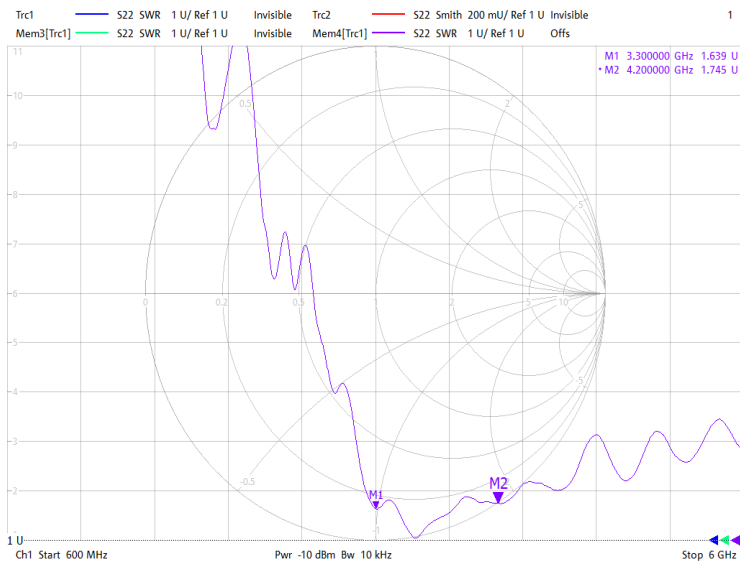
1

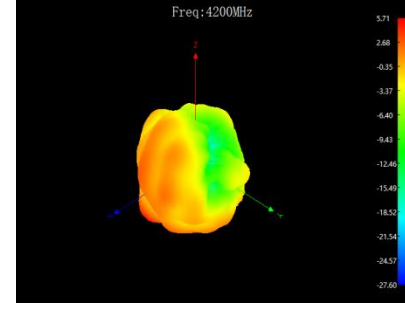
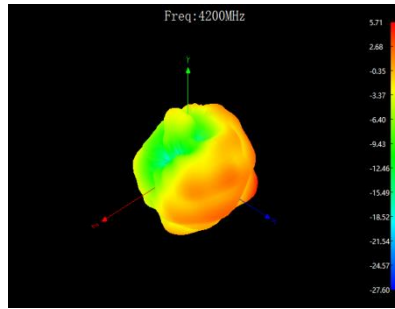
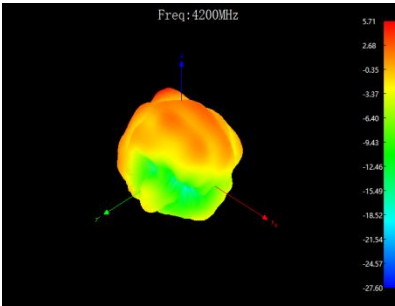
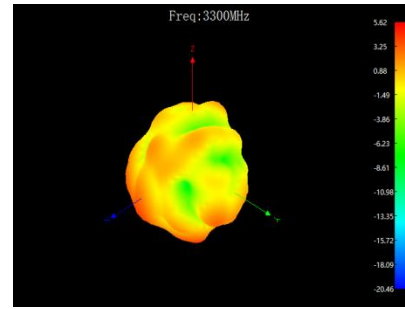
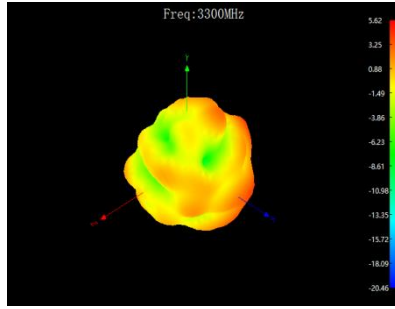
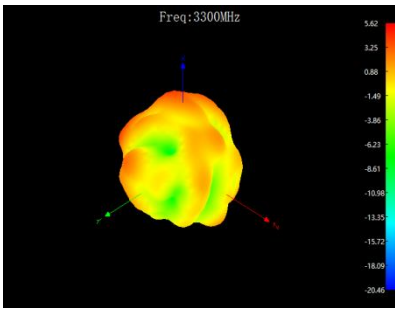




**ANT6**

3/16/2023 10:57:00 AM  
1328.5170932-100227-MW



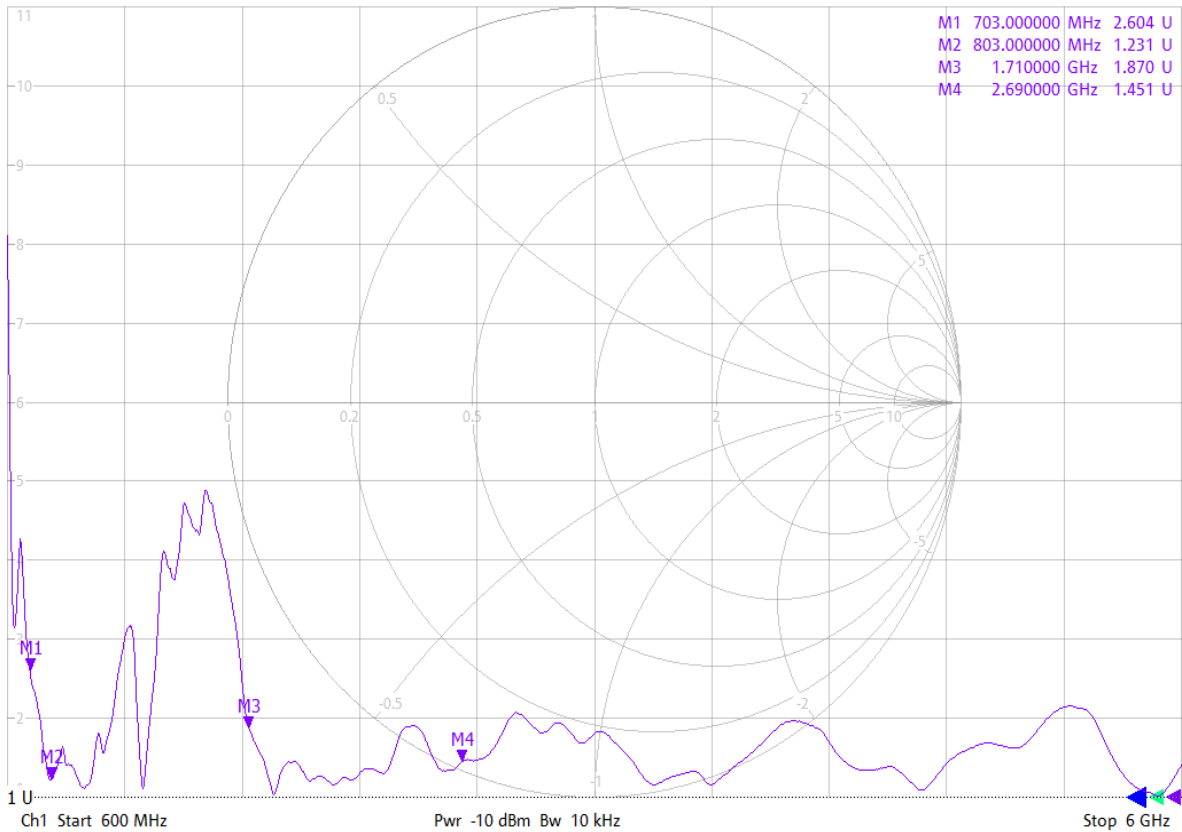


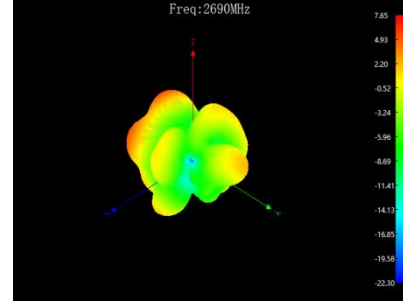
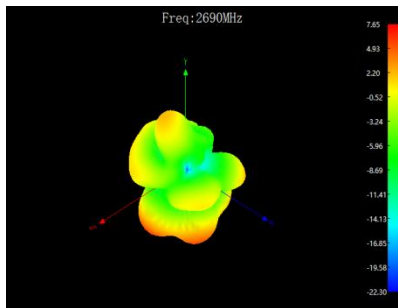
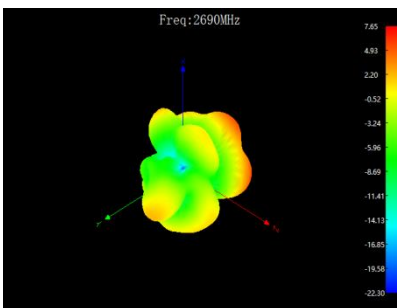
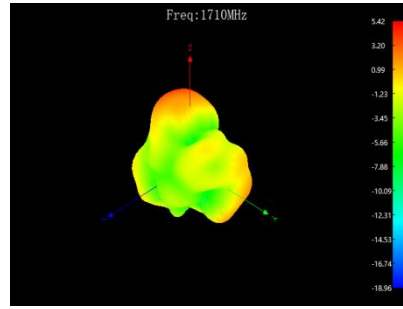
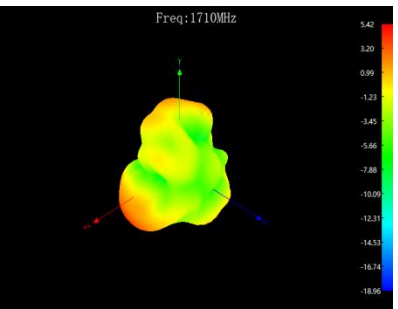
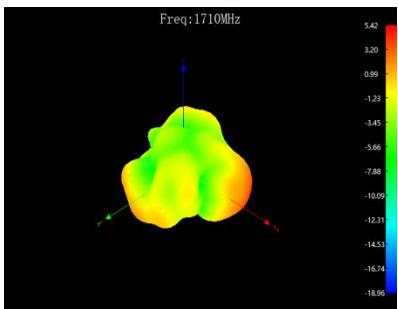
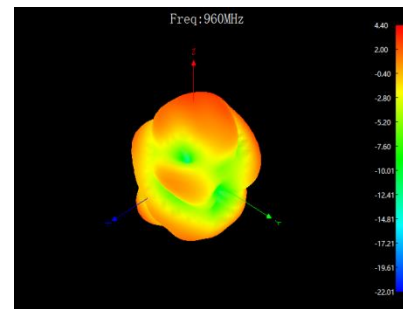
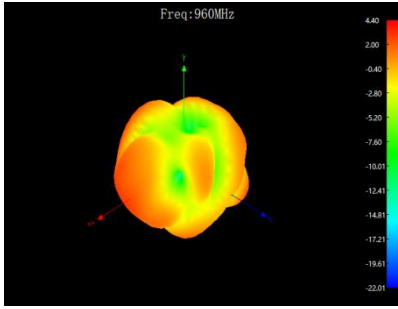
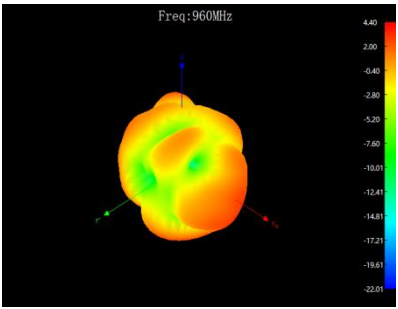
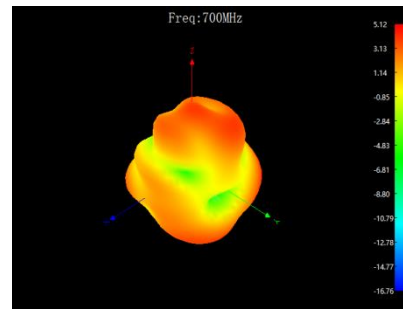
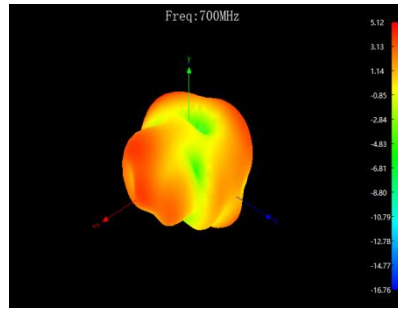
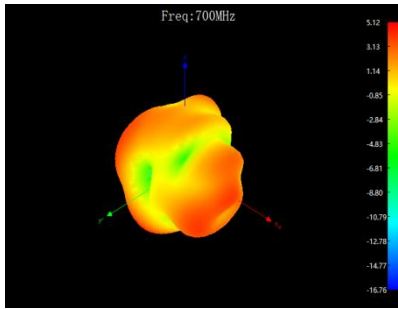
ANT7

2/16/2023 10:46:47 AM  
1328.5170K92-100227-Mv

Trc1 S22 SWR 1 U/ Ref 1 U Invisible Trc2 S22 Smith 200 mU/ Ref 1 U Invisible  
Mem3[Trc1] S22 SWR 1 U/ Ref 1 U Invisible Mem4[Trc1] S22 SWR 1 U/ Ref 1 U Offs

1



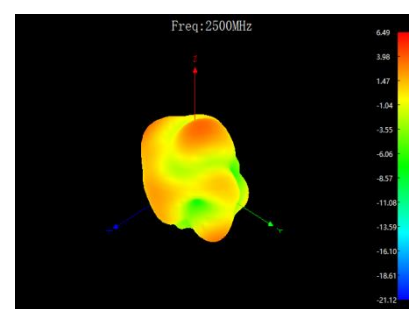
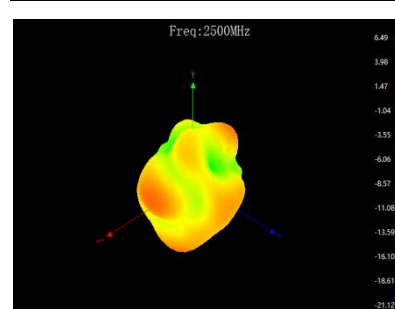
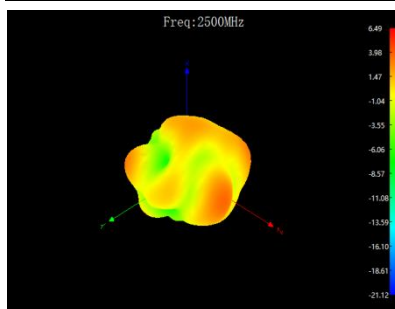
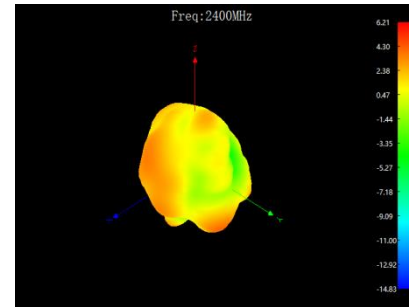
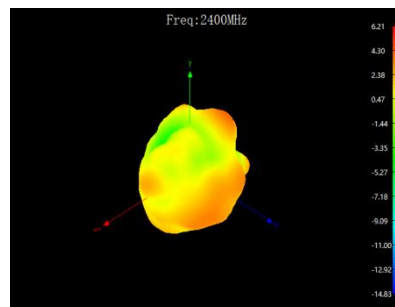
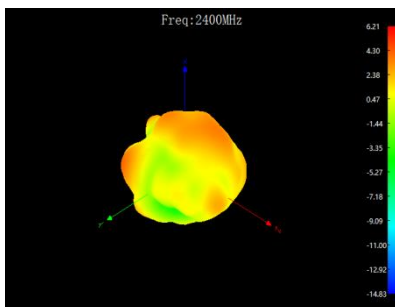
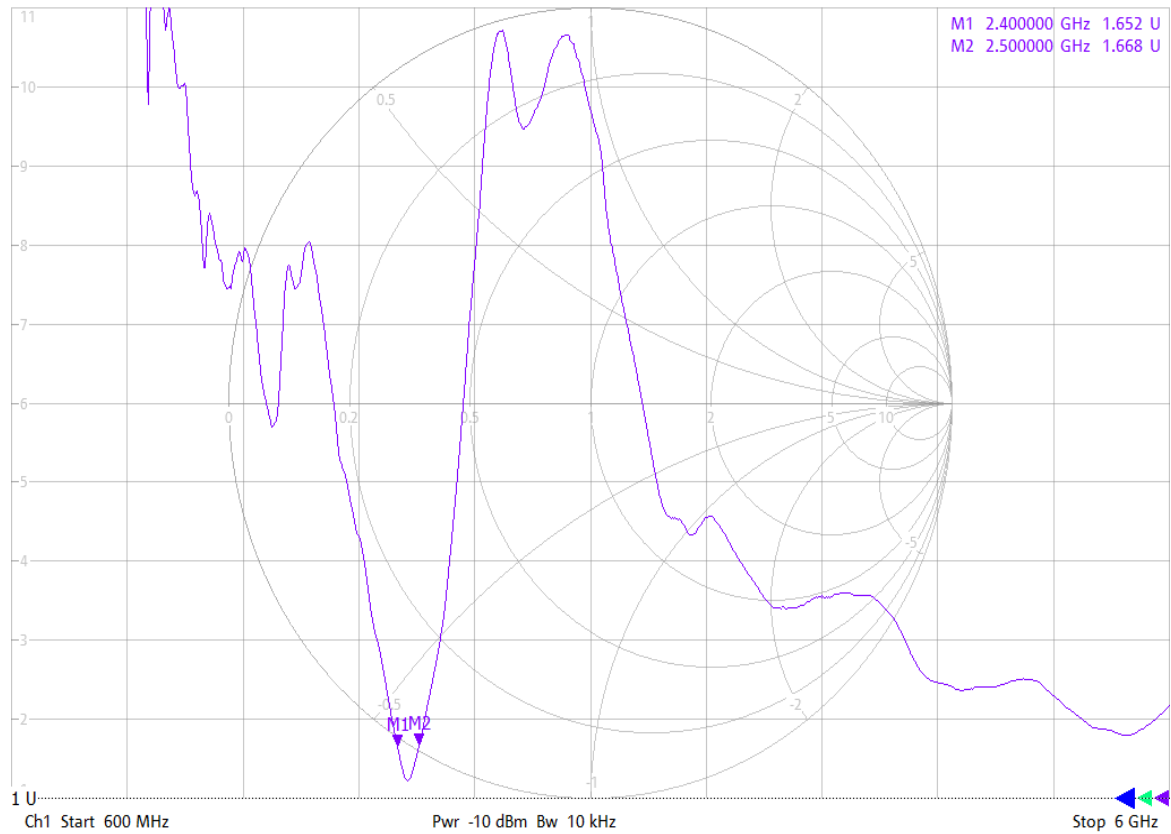


W1

2/16/2023 10:50:24 AM  
1328.5170K92-100227-Mv

Trc1 S22 SWR 1 U/ Ref 1 U Invisible Trc2 S22 Smith 200 mU/ Ref 1 U Invisible  
Mem3[Trc1] S22 SWR 1 U/ Ref 1 U Invisible Mem4[Trc1] S22 SWR 1 U/ Ref 1 U Offs

1

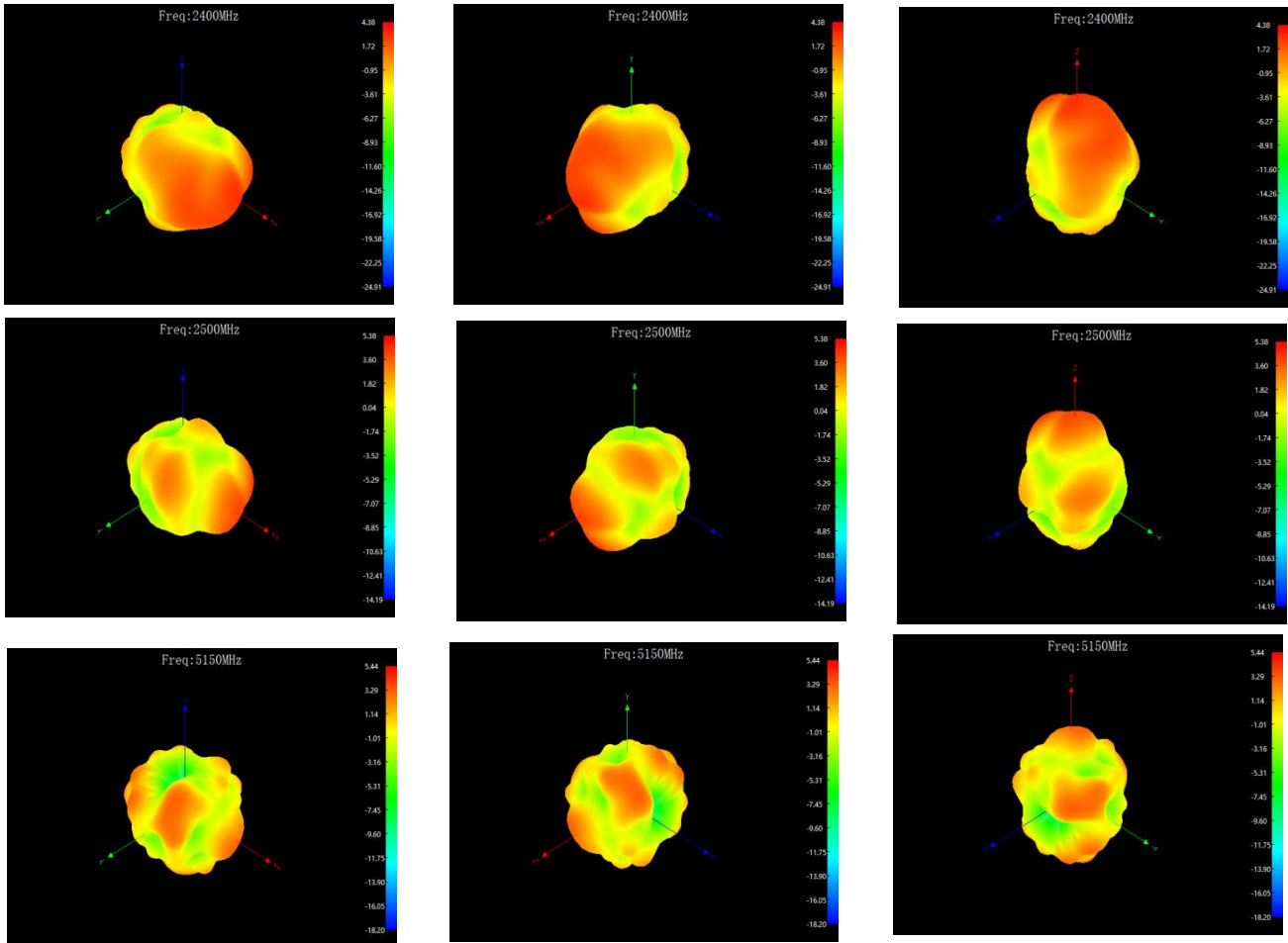
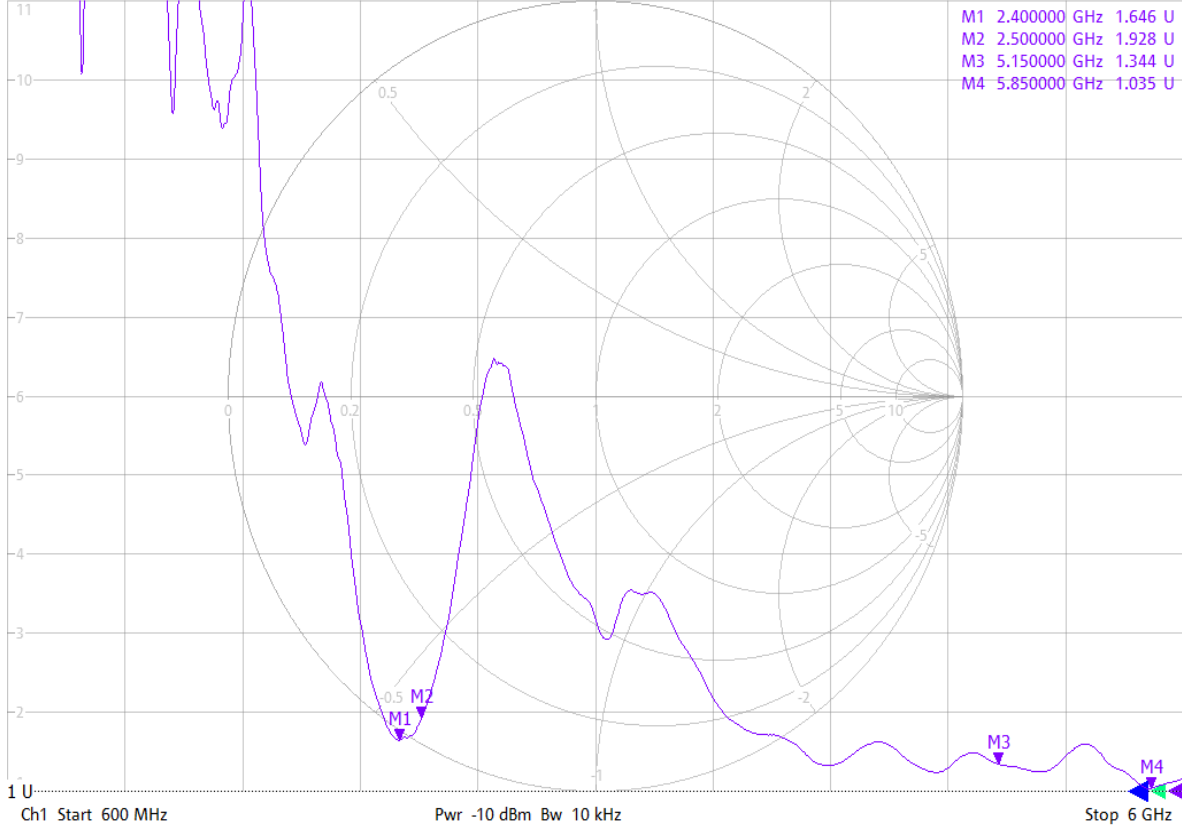


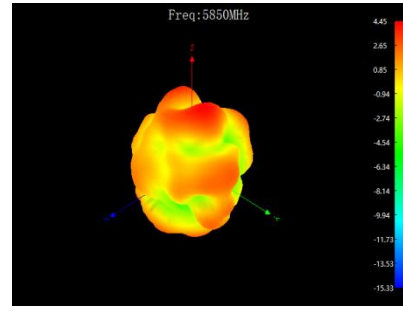
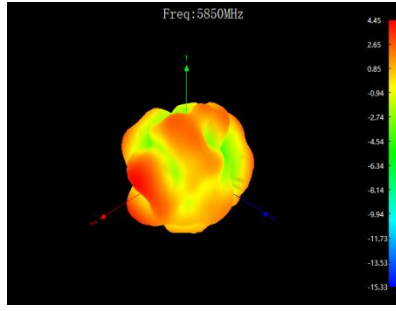
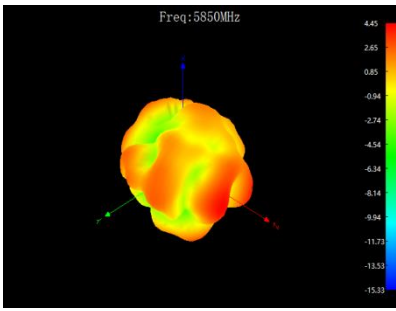
W3

2/16/2023 10:48:56 AM  
1328.5170K92-100227-Mv

Trc1 S22 SWR 1 U/ Ref 1 U Invisible Trc2 S22 Smith 200 mU/ Ref 1 U Invisible  
Mem3[Trc1] S22 SWR 1 U/ Ref 1 U Invisible Mem4[Trc1] S22 SWR 1 U/ Ref 1 U Offs

1



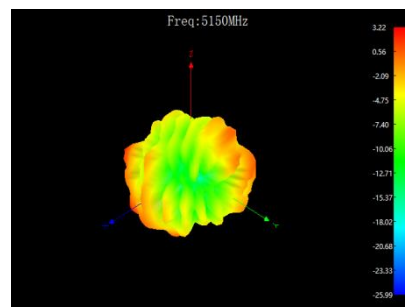
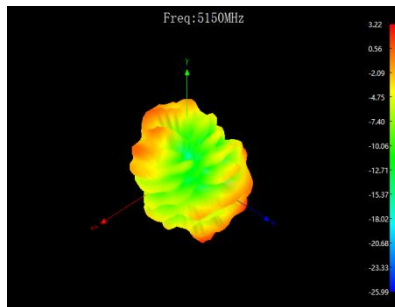
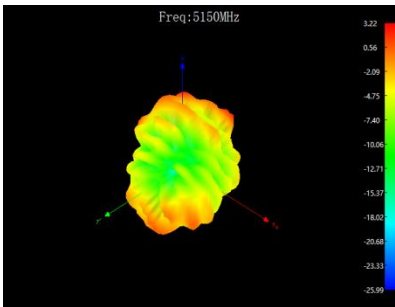
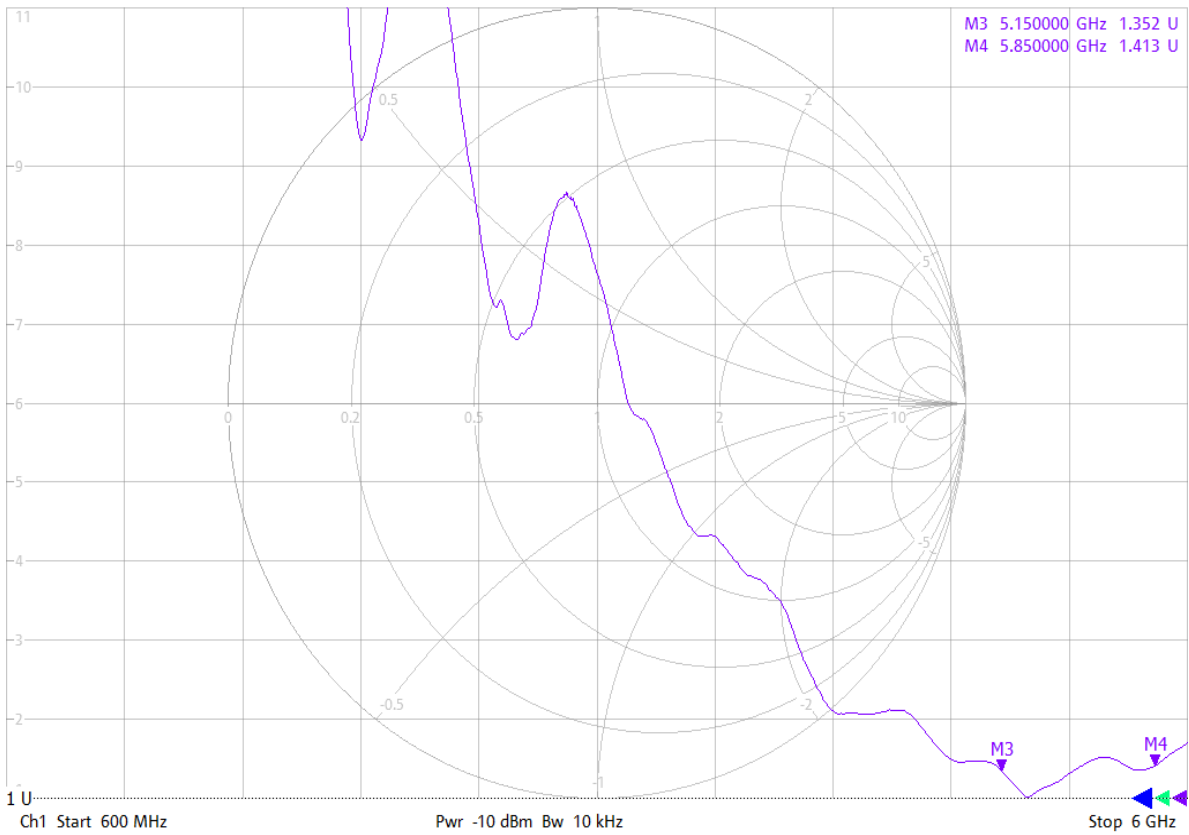


W4

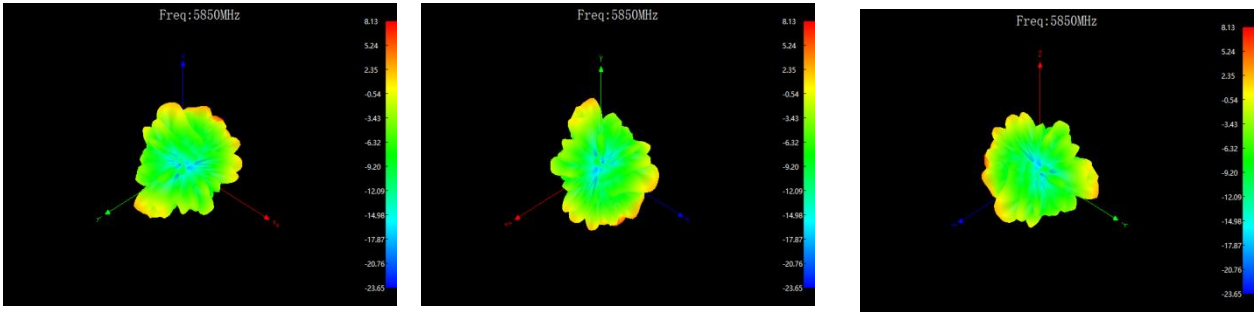
2/16/2023 10:50:59 AM  
1328.5170K92-100227-Mv

Trc1 — S22 SWR 1 U/ Ref 1 U Invisible Trc2 — S22 Smith 200 mU/ Ref 1 U Invisible  
Mem3[Trc1] — S22 SWR 1 U/ Ref 1 U Invisible Mem4[Trc1] — S22 SWR 1 U/ Ref 1 U Offs

1





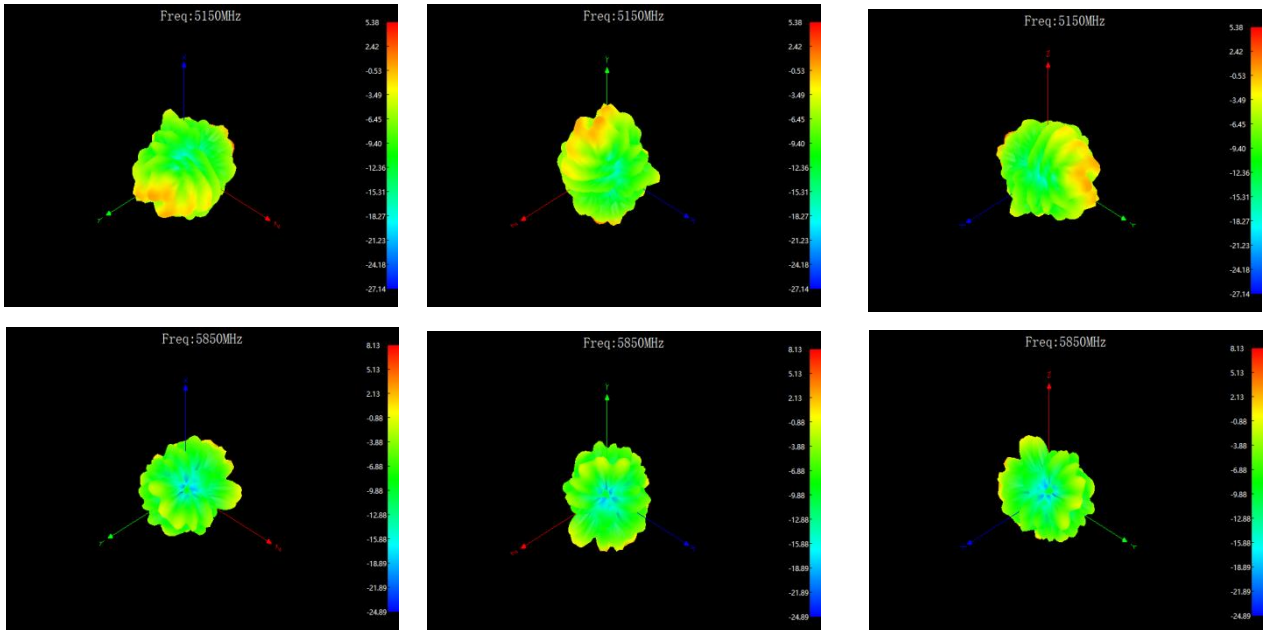
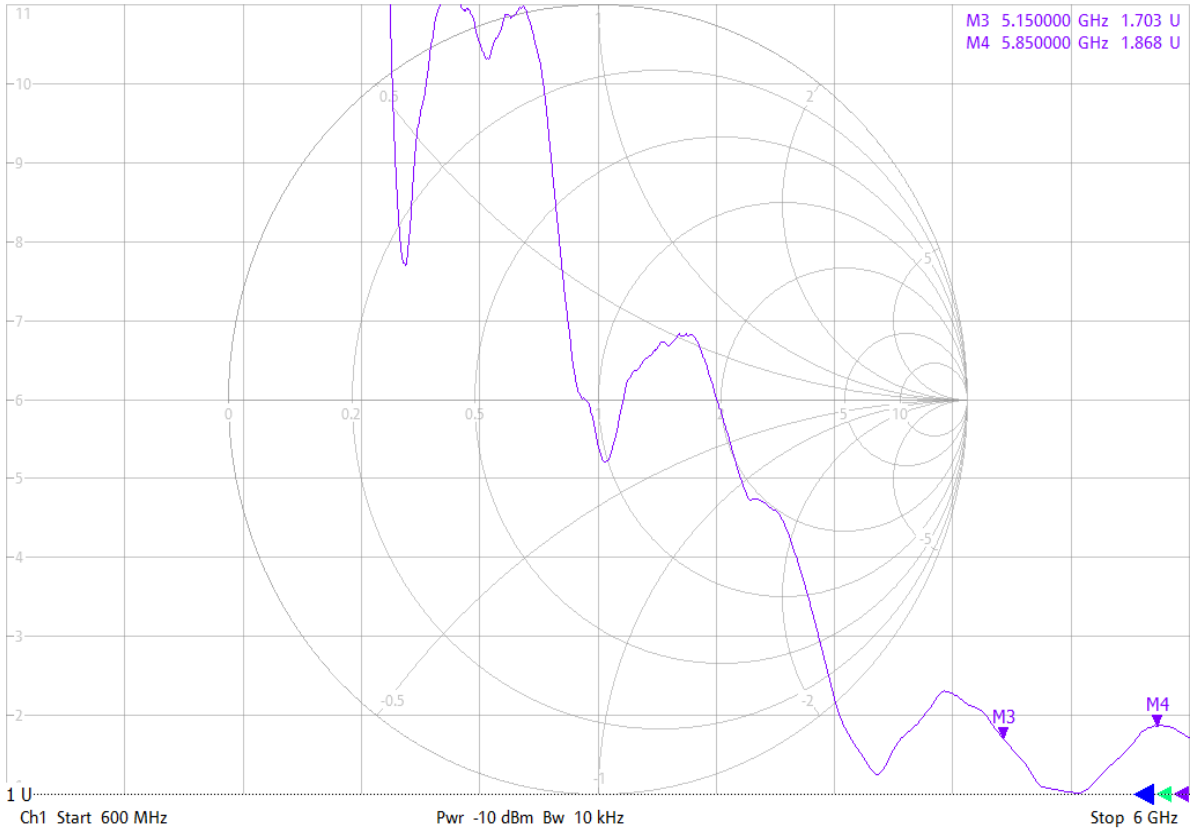


W5

2/16/2023 10:51:46 AM  
1328.5170K92-100227-Mv

Trc1 — S22 SWR 1 U/ Ref 1 U Invisible Trc2 — S22 Smith 200 mU/ Ref 1 U Invisible  
Mem3[Trc1] — S22 SWR 1 U/ Ref 1 U Invisible Mem4[Trc1] — S22 SWR 1 U/ Ref 1 U Offs

1



WiFi:

WiFi-4								WiFi-3							
WiFi-4 (2.4G WiFi)				WiFi-4 (5G WiFi)				WiFi-3 (2.4G WiFi)				WiFi-3 (5G WiFi)			
Freq (MHz)	Effi (%)	Effi (dB)	Gain (dBi)	Freq (MHz)	Effi (%)	Effi (dB)	Gain (dBi)	Freq (MHz)	Effi (%)	Effi (dB)	Gain (dBi)	Freq (MHz)	Effi (%)	Effi (dB)	Gain (dBi)
2400	48.38	-3.15	2.48	5150	51.08	-2.92	2.51	2400	49.79	-3.03	2.09	5150	39.96	-3.98	1.14
2410	48.01	-3.19	2.24	5200	49.35	-3.07	2.56	2410	47.75	-3.21	1.99	5200	41.83	-3.79	1.97
2420	47.7	-3.21	2.08	5250	50.73	-2.95	2.76	2420	48.03	-3.18	2.22	5250	42.46	-3.72	2.22
2430	48.08	-3.18	1.79	5300	45.11	-3.46	2.17	2430	45.88	-3.38	2.34	5300	38.98	-4.09	0.36
2440	49	-3.1	1.76	5350	41.12	-3.86	2.18	2440	48.07	-3.18	2.07	5350	36.32	-4.4	0.04
2450	48.34	-3.16	1.54	5400	45.51	-3.42	1.78	2450	46.21	-3.35	1.68	5400	37.85	-4.22	0.64
2460	47.11	-3.27	1.35	5450	49.56	-3.05	2.47	2460	44.62	-3.5	1.48	5450	38.26	-4.17	0.23
2470	46.59	-3.32	1.05	5500	41	-3.87	2.26	2470	44.46	-3.52	1.41	5500	36.29	-4.4	1.22
2480	45.76	-3.4	0.98	5550	37.66	-4.24	2.34	2480	42.98	-3.67	1.53	5550	34.39	-4.64	0.41
2490	43.92	-3.57	1.01	5600	45.63	-3.41	2.98	2490	39.54	-4.03	1.45	5600	40.33	-3.94	1.1
2500	43.46	-3.62	1.25	5650	40.17	-3.96	1.7	2500	37.82	-4.22	1.29	5650	43.56	-3.61	1.13
				5700	38.17	-4.18	0.61					5700	42.7	-3.7	1.69
				5750	43.45	-3.62	2.93					5750	45.44	-3.43	1.69
				5800	48.39	-3.15	2.67					5800	51.72	-2.86	2.14
				5850	48.38	-3.15	3.31					5850	52.5	-2.8	1.79

WiFi-2 (5G WiFi only)				WiFi-1 (5G WiFi only)			
Freq (MHz)	Effi (%)	Effi (dB)	Gain (dBi)	Freq (MHz)	Effi (%)	Effi (dB)	Gain (dBi)
5150	46.53	-3.32	1.81	5150	43.96	-3.57	2.02
5200	49.67	-3.04	1.93	5200	47.53	-3.23	2.11
5250	54.9	-2.6	2.2	5250	51.62	-2.87	2.51
5300	50.92	-2.93	1.69	5300	49.47	-3.06	2.13
5350	50.96	-2.93	1.49	5350	49.68	-3.04	2.37
5400	55.63	-2.55	1.72	5400	52.35	-2.81	2.39
5450	53.57	-2.71	1.7	5450	50.09	-3	2.11
5500	47.28	-3.25	1.44	5500	43.77	-3.59	1.24
5550	46.91	-3.29	2.26	5550	46.94	-3.28	1.22
5600	50.74	-2.95	2.66	5600	46.22	-3.35	1.93
5650	47.51	-3.23	2.13	5650	44.82	-3.49	1.65
5700	48.24	-3.17	1.92	5700	43.74	-3.59	1.69
5750	49.24	-3.08	1.79	5750	43.38	-3.63	1.11
5800	52.07	-2.83	2.27	5800	46.77	-3.3	1.79
5850	52.73	-2.78	2.27	5850	47.97	-3.19	2.04