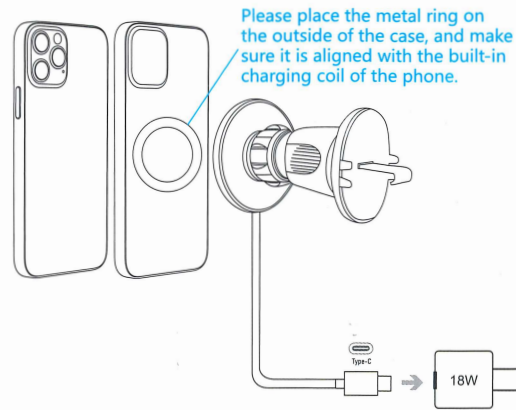
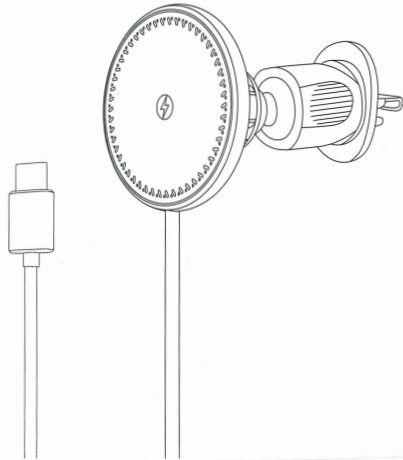


# User Manual

## 15W Magnetic Wireless Charger



5V2A adapter is applicable to 5W standard wireless charging mode.  
9V1.67A adapter is applicable to iPhone 7.5W fast wireless charging mode.  
9V1.67A adapter is applicable to Samsung 10W fast wireless charging mode.  
12V/1.5A adapter is applicable to 15W fast wireless charging mode.

**Fast wireless charging requires QC2.0/3.0 adapter or PD 18W and 18W above adapter.**

### Specifications

Input	DC5V/3A, 9V/2A
Output	15W/10W/7.5W/5W
Charging Distance	≤5mm
Product Dimension	58mm*26mm*58mm
Product Material	Aluminium alloy+PC

### Product Features

Built-in strong magnets,easier for one-hand operation.  
product Features

FOD function: intelligently identify foreign objects, such as coins, keys, ID cards, bank cards and other metal or magnetic objects placed on the charger, the phone stops charging

### Attention

- 1.Please do not vigorously extrude or collide.
- 2.Please do not dismantle or put it into fire or water when the product is power on,to avoid short circuit or leakage.
- 3.Please do not use it in severely high temperature,high humidity or corrosive environment,to avoid damage to the circuit leakage.
- 4.Please do not put the magnetic strip or chip card (Such as ID card,bankcard etc.) on the charging pad to avoid to cause magnetic card lose efficacy.
- 5.Please do not put the metal (Such as coin etc.) on the charging pad when charging,to avoid damage from heating.

**Note: This product is only suitable for phones with wireless charging function.**

**If you are not using phone case or your phone case already has a magnetic ring, please skip the step of installing the magnetic ring.**

**When you need to take off the phone, please slowly push the phone to the edge of the wireless charger to avoid damage to the phone or the wireless charger.**

### FCC Statement

This equipment has been tested and found to comply with the limits for a ClassB digital device, pursuant to part 15 of the FCC rules. These limits are designed to provide reasonable protection against harmful interference in a residential installation. This equipment generates, uses and can radiate radio frequency energy and, if not installed and used in accordance with the instructions, may cause harmful interference to radio communications.

However, there is no guarantee that interference will not occur in a particular installation. If this equipment does cause harmful interference to radio or television reception, which can be determined by turning the equipment off and on, the user is encouraged to try to correct the interference by one or more of the following measures: -Reorient or relocate the receiving antenna. -Increase the separation between the equipment and receiver. -Connect the equipment into an outlet on a circuit different from that to which the receiver is connected. -Consult the dealer or an experienced radio/TV technician for help. To assure continued compliance, any changes or modifications not expressly approved by the party.

Responsible for compliance could void the user's authority to operate this equipment. (Example- use only shielded interface cables when connecting to computer or peripheral devices).

This equipment complies with Part 15 of the FCC Rules. Operation is subject to the following two conditions:

- (1)This device may not cause harmful interference, and
- (2)This device must accept any interference received, including interference that may cause undesired operation.

### FCC Radiation Exposure Statement:

The equipment complies with FCC Radiation exposure limits set forth for uncontrolled environment. This equipment should be installed and operated with minimum distance 20cm between the radiator and your body