


# LABEL AND LABEL LOCATION



**Airmux-400E**  
ODU/F50W/EXT



S/N : P21130IC00100124



P/N : RD-2U50-E2MM



Ver: 123A4567

INPUT: 56V  1A



This device complies with part 15 of the FCC Rules. Operation is subject to the following two conditions:(1) This device may not cause harmful interference, and(2) This device must accept any interference received, including interference that may cause undesired operation.

Type 4 Enclosure IP67  
FCC ID: 2BE55-PTP5GAX  
IC: 4948B-PTP5GAX  
REV: A




**Airmux-400E ODU/F50W/EXT label Artwork**



**Airmux-400E**  
ODU/F50W/INT



S/N : P21130IC00100124



P/N : RD-2U50-E1MM



Ver: 123A4567

INPUT: 56V  1A



This device complies with part 15 of the FCC Rules. Operation is subject to the following two conditions:(1) This device may not cause harmful interference, and(2) This device must accept any interference received, including interference that may cause undesired operation.

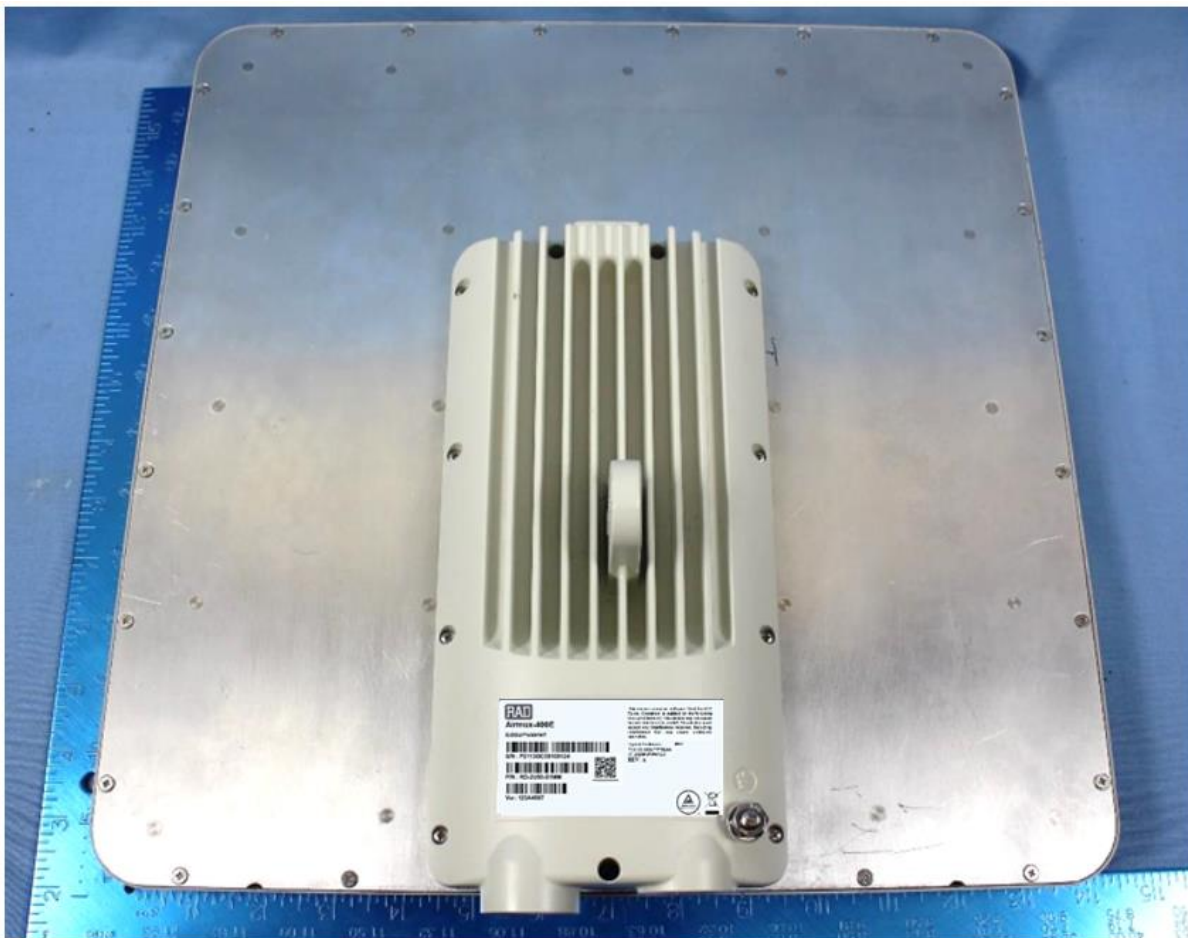
Type 4 Enclosure IP67  
FCC ID: 2BE55-PTP5GAX  
IC: 4948B-PTP5GAX  
REV: A




**Airmux-400E ODU/F50W/INT label Artwork**



**Airmux-400E ODU/F50W/EXT label Location**



**Airmux-400E ODU/F50W/INT label Location**