



## Shenzhen Huaxia Testing Technology Co., Ltd.

1F., Block A of Tongsheng Technology Building, Huahui Road, Dalang Street, Longhua District, Shenzhen, China

Telephone: +86-755-26648640  
Fax: +86-755-26648637  
Website: [www.cqa-cert.com](http://www.cqa-cert.com)

Report Template Version: V05  
Report Template Revision Date: 2021-11-03

# Test Report

**Report No.:** CQASZ20250400944E-01  
**Applicant:** RADIOSHACK WORLDWIDE CORP.  
**Address of Applicant:** Millennium Tower, 18th floor Paseo General Escalon Number 3675 Col. Escalon  
, San Salvador, El Salvador  
**Equipment Under Test (EUT):**  
**EUT Name:** WIRELESS NUMERIC KEYBOARD  
**Model No.:** 2604796  
**Test Model No.:** 2604796  
**Brand Name:** RADIOSHACK  
**FCC ID:** 2BDUR-2604796U  
**Standards:** 47 CFR Part 15, Subpart C  
KDB558074 D01 15.247 Meas Guidance v05r02  
**Date of Receipt:** 2025-04-28  
**Date of Test:** 2025-04-28 to 2025-05-29  
**Date of Issue:** 2025-7-15  
**Test Result:** PASS\*

\*In the configuration tested, the EUT complied with the standards specified above

**Tested By:** Lewis Zhou  
( Lewis Zhou )

**Reviewed By:** Timo Lei  
( Timo Lei )

**Approved By:** Jack Ai  
( Jack Ai )



## 1 Version

### Revision History Of Report

Report No.	Version	Description	Issue Date
CQASZ20250400944E-01	Rev.01	Initial report	2025-7-15

## 2 Test Summary

Test Item	Test Requirement	Test method	Result
Antenna Requirement	47 CFR Part 15, Subpart C Section 15.203	ANSI C63.10 (2013)	PASS
AC Power Line Conducted Emission	47 CFR Part 15, Subpart C Section 15.207	ANSI C63.10 (2013)	PASS
Field Strength of the Fundamental Signal	47 CFR Part 15, Subpart C Section 15.249 (a)	ANSI C63.10 (2013)	PASS
Spurious Emissions	47 CFR Part 15, Subpart C Section 15.249 (a)/15.209	ANSI C63.10 (2013)	PASS
Restricted bands around fundamental frequency (Radiated Emission)	47 CFR Part 15, Subpart C Section 15.249(a)/15.205	ANSI C63.10 (2013)	PASS
20dB Occupied Bandwidth	47 CFR Part 15, Subpart C Section 15.215 (c)	ANSI C63.10 (2013)	PASS

### 3 Contents

	Page
1 VERSION .....	2
2 TEST SUMMARY .....	3
3 CONTENTS .....	4
4 GENERAL INFORMATION .....	5
4.1 CLIENT INFORMATION .....	5
4.2 GENERAL DESCRIPTION OF EUT .....	5
4.3 ADDITIONAL INSTRUCTIONS .....	7
4.4 TEST ENVIRONMENT AND MODE .....	8
4.5 DESCRIPTION OF SUPPORT UNITS .....	8
4.6 STATEMENT OF THE MEASUREMENT UNCERTAINTY .....	9
4.7 TEST LOCATION .....	10
4.8 TEST FACILITY .....	10
4.9 DEVIATION FROM STANDARDS .....	10
4.10 ABNORMALITIES FROM STANDARD CONDITIONS .....	10
4.11 OTHER INFORMATION REQUESTED BY THE CUSTOMER .....	10
4.12 EQUIPMENT LIST .....	11
5 TEST RESULTS AND MEASUREMENT DATA .....	12
5.1 ANTENNA REQUIREMENT .....	12
5.2 CONDUCTED EMISSIONS .....	13
5.3 RADIATED EMISSION .....	17
5.4 20dB BANDWIDTH .....	25
6 PHOTOGRAPHS .....	28
6.1 RADIATED EMISSION TEST SETUP .....	28
6.2 .....	29
6.3 CONDUCTED EMISSION .....	29
6.4 RF CONDUCTED MEASUREMENT .....	30
7 PHOTOGRAPHS - EUT CONSTRUCTIONAL DETAILS .....	31

## 4 General Information

### 4.1 Client Information

Applicant:	RADIOSHACK WORLDWIDE CORP.
Address of Applicant:	Millennium Tower, 18th floor Paseo General Escalon Number 3675 Col. Escalón, San Salvador, El Salvador
Manufacturer:	RADIOSHACK WORLDWIDE CORP.
Address of Manufacturer:	Millennium Tower, 18th floor Paseo General Escalon Number 3675 Col. Escalón, San Salvador, El Salvador
Factory:	RADIOSHACK WORLDWIDE CORP.
Address of Factory:	Millennium Tower, 18th floor Paseo General Escalon Number 3675 Col. Escalón, San Salvador, El Salvador

### 4.2 General Description of EUT

EUT Name:	WIRELESS NUMERIC KEYBOARD
Model No.:	2604796
Test Model No.:	2604796
Trade Mark:	RADIOSHACK
Software Version:	5BC0
Hardware Version:	V1.2
Frequency Range:	2402MHz~2480MHz
Modulation Type:	GFSK
Number of Channels:	40
Sample Type:	<input type="checkbox"/> Mobile <input checked="" type="checkbox"/> Portable <input type="checkbox"/> Fix Location
Test Software of EUT:	SE67T_Test_v161
Antenna Type:	PCB antenna
Antenna Gain:	1.71dBi
Power Supply:	USB interface power supply for DC 5V

Operation Frequency each of channel							
Channel	Frequency	Channel	Frequency	Channel	Frequency	Channel	Frequency
0	2402MHz	10	2422MHz	20	2442MHz	30	2462MHz
1	2404MHz	11	2424MHz	21	2444MHz	31	2464MHz
2	2406MHz	12	2426MHz	22	2446MHz	32	2466MHz
3	2408MHz	13	2428MHz	23	2448MHz	33	2468MHz
4	2410MHz	14	2430MHz	24	2450MHz	34	2470MHz
5	2412MHz	15	2432MHz	25	2452MHz	35	2472MHz
6	2414MHz	16	2434MHz	26	2454MHz	36	2474MHz
7	2416MHz	17	2436MHz	27	2456MHz	37	2476MHz
8	2418MHz	18	2438MHz	28	2458MHz	38	2478MHz
9	2420MHz	19	2440MHz	29	2460MHz	39	2480MHz

Note:

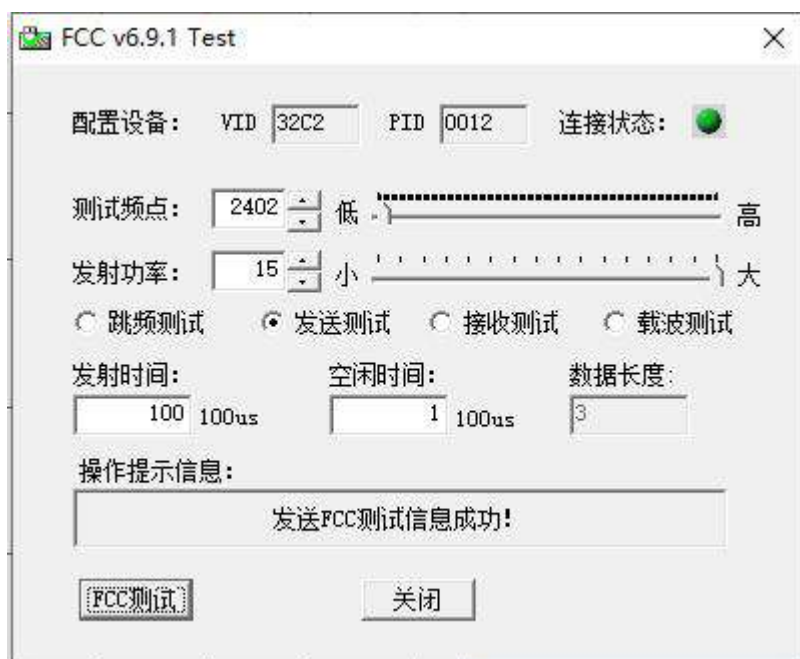
In section 15.31(m), regards to the operating frequency range over 10 MHz, the lowest frequency, the middle frequency, and the highest frequency of channel were selected to perform the test, and the selected channel see below:

Channel	Frequency
The lowest channel (CH0)	2402MHz
The middle channel (CH19)	2440MHz
The highest channel (CH39)	2480MHz

### 4.3 Additional Instructions

EUT Test Software Settings:		
Mode:	<input checked="" type="checkbox"/> Special software is used. <input type="checkbox"/> Through engineering command into the engineering mode. engineering command: *##3646633##*	
EUT Power level:	Class0 (Power level is built-in set parameters and cannot be changed and selected)	
Use test software to set the lowest frequency, the middle frequency and the highest frequency keep transmitting of the EUT.		
Mode	Channel	Frequency(MHz)
GFSK	CH0	2402
	CH19	2440
	CH39	2480

#### Run Software:



#### 4.4 Test Environment and Mode

<b>Operating Environment:</b>	
<b>Radiated Emissions:</b>	
Temperature:	27 °C
Humidity:	59 % RH
Atmospheric Pressure:	1009mbar
Temperature:	26 °C
Humidity:	59 % RH
Atmospheric Pressure:	1009mbar
<b>Radio conducted item test (RF Conducted test room):</b>	
Temperature:	25.3 °C
Humidity:	55 % RH
Atmospheric Pressure:	1009mbar
<b>Test mode:</b>	
Transmitting mode:	Use test software (RF test) to set the lowest frequency, the middle frequency and the highest frequency keep transmitting of the EUT.

#### 4.5 Description of Support Units

The EUT has been tested with associated equipment below.

1) Support equipment

Description	Manufacturer	Model No.	Certification	Supplied by
Computer	Lenovo	/	/	CQA
/	/	/	/	/

2) Cable

Cable No.	Description	Manufacturer	Cable Type/Length	Supplied by
/	/	/	/	/



## 4.6 Statement of the measurement uncertainty

The data and results referenced in this document are true and accurate.

The reader is cautioned that there may be errors within the calibration limits of the equipment and facilities.

The measurement uncertainty was calculated for all measurements listed in this test report acc. to CISPR 16 - 4 „Specification for radio disturbance and immunity measuring apparatus and methods – Part 4: Uncertainty in EMC Measurements“ and is documented in the **Shenzhen Huaxia Testing Technology Co., Ltd.** quality system acc. to DIN EN ISO/IEC 17025.

Furthermore, component and process variability of devices similar to that tested may result in additional deviation. The manufacturer has the sole responsibility of continued compliance of the device.

Hereafter the best measurement capability for **CQA** laboratory is reported:

Test	Range	Uncertainty	Notes
Radiated Emission	Below 1GHz	5.12dB	(1)
Radiated Emission	Above 1GHz	4.60dB	(1)
Conducted Disturbance	0.15~30MHz	3.34dB	(1)

(1) This uncertainty represents an expanded uncertainty expressed at approximately the 95% confidence level using a coverage factor of  $k=2$ .

#### 4.7 Test Location

All tests were performed at:

Shenzhen Huaxia Testing Technology Co., Ltd.

1F., Block A of Tongsheng Technology Building, Huahui Road, Dalang Street, Longhua District, Shenzhen, China

#### 4.8 Test Facility

- **A2LA (Certificate No. 4742.01)**

Shenzhen Huaxia Testing Technology Co., Ltd., Shenzhen EMC Laboratory is accredited by the American Association for Laboratory Accreditation(A2LA). Certificate No. 4742.01.

- **FCC Registration No.: 522263**

Shenzhen Huaxia Testing Technology Co., Ltd., Shenzhen EMC Laboratory has been registered and fully described in a report filed with the (FCC) Federal Communications Commission. The acceptance letter from the FCC is maintained in our files. Registration No.:522263

#### 4.9 Deviation from Standards

None.

#### 4.10 Abnormalities from Standard Conditions

None.

#### 4.11 Other Information Requested by the Customer

None.

## 4.12 Equipment List

Test Equipment	Manufacturer	Model No.	Instrument No.	Calibration Date	Calibration Due Date
EMI Test Receiver	R&S	ESR7	CQA-005	2024/9/2	2025/9/1
Spectrum analyzer	R&S	FSU26	CQA-038	2024/9/2	2025/9/1
Spectrum analyzer	R&S	FSU40	CQA-075	2024/9/2	2025/9/1
Preamplifier	MITEQ	AFS4-00010300-18-10P-4	CQA-035	2024/9/2	2025/9/1
Preamplifier	MITEQ	AMF-6D-02001800-29-20P	CQA-036	2024/9/2	2025/9/1
Preamplifier	EMCI	EMC184055SE	CQA-089	2024/9/2	2025/9/1
Loop antenna	Schwarzbeck	FMZB1516	CQA-060	2023/9/8	2026/9/7
Bilog Antenna	R&S	HL562	CQA-011	2023/11/01	2026/10/31
Horn Antenna	R&S	HF906	CQA-012	2023/11/01	2026/10/31
Horn Antenna	Schwarzbeck	BBHA 9170	CQA-088	2023/9/7	2026/9/6
Coaxial Cable (Above 1GHz)	CQA	N/A	C007	2024/9/2	2025/9/1
Coaxial Cable (Below 1GHz)	CQA	N/A	C013	2024/9/2	2025/9/1
Antenna Connector	CQA	RFC-01	CQA-080	2024/9/2	2025/9/1
RF cable(9KHz~40GHz)	CQA	RF-01	CQA-079	2024/9/2	2025/9/1
Power meter	R&S	NRVD	CQA-029	2024/9/2	2025/9/1
Power divider	MIDWEST	PWD-2533-02-SMA-79	CQA-067	2024/9/2	2025/9/1
EMI Test Receiver	R&S	ESR7	CQA-005	2024/9/2	2025/9/1
LISN	R&S	ENV216	CQA-003	2024/9/2	2025/9/1
Coaxial cable	CQA	N/A	CQA-C009	2024/9/2	2025/9/1
DC power	KEYSIGHT	E3631A	CQA-028	2024/9/2	2025/9/1

### Test software:

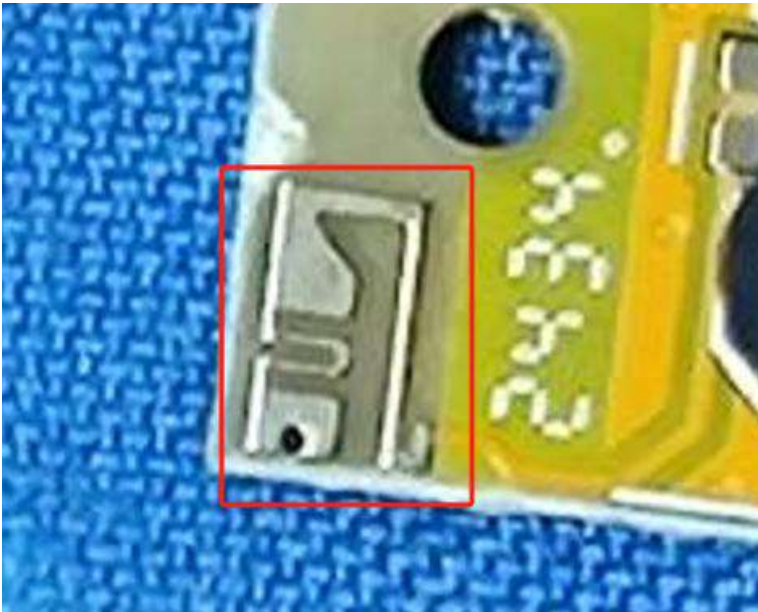
	Manufacturer	Software brand	Software version
Radiated Emissions test software	Tonscend	JS1120-3	Version:8
Conducted Emissions test software	Audix	e3	Version:9
RF Conducted test software	Audix	e3	V3.5.39

### Note:

The temporary antenna connector is soldered on the pcb board in order to perform conducted tests and this temporary antenna connector is listed in the equipment list.

## 5 Test results and Measurement Data

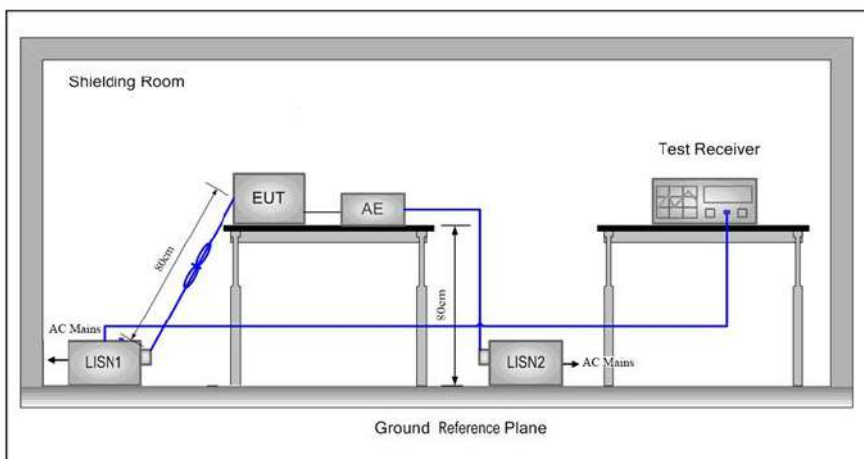
### 5.1 Antenna Requirement

<b>Standard requirement:</b>	47 CFR Part 15C Section 15.203
<p>15.203 requirement: An intentional radiator shall be designed to ensure that no antenna other than that furnished by the responsible party shall be used with the device. The use of a permanently attached antenna or of an antenna that uses a unique coupling to the intentional radiator, the manufacturer may design the unit so that a broken antenna can be replaced by the user, but the use of a standard antenna jack or electrical connector is prohibited.</p>	
<b>EUT Antenna:</b>	
The antenna is PCB antenna. The best case gain of the antenna is 1.71dBi.	

## 5.2 Conducted Emissions

Test Requirement:	47 CFR Part 15C Section 15.207		
Test Method:	ANSI C63.10: 2013		
Test Frequency Range:	150kHz to 30MHz		
Limit:	Frequency range (MHz)	Limit (dBuV)	
		Quasi-peak	Average
	0.15-0.5	66 to 56*	56 to 46*
	0.5-5	56	46
	5-30	60	50
* Decreases with the logarithm of the frequency.			
Test Procedure:	<ol style="list-style-type: none"> <li>1) The mains terminal disturbance voltage test was conducted in a shielded room.</li> <li>2) The EUT was connected to AC power source through a LISN 1 (Line Impedance Stabilization Network) which provides a <math>50\Omega/50\mu\text{H} + 5\Omega</math> linear impedance. The power cables of all other units of the EUT were connected to a second LISN 2, which was bonded to the ground reference plane in the same way as the LISN 1 for the unit being measured. A multiple socket outlet strip was used to connect multiple power cables to a single LISN provided the rating of the LISN was not exceeded.</li> <li>3) The tabletop EUT was placed upon a non-metallic table 0.8m above the ground reference plane. And for floor-standing arrangement, the EUT was placed on the horizontal ground reference plane,</li> <li>4) The test was performed with a vertical ground reference plane. The rear of the EUT shall be 0.4 m from the vertical ground reference plane. The vertical ground reference plane was bonded to the horizontal ground reference plane. The LISN 1 was placed 0.8 m from the boundary of the unit under test and bonded to a ground reference plane for LISNs mounted on top of the ground reference plane. This distance was between the closest points of the LISN 1 and the EUT. All other units of the EUT and associated equipment was at least 0.8 m from the LISN 2.</li> <li>5) In order to find the maximum emission, the relative positions of equipment and all of the interface cables must be changed according to ANSI C63.10: 2013 on conducted measurement.</li> </ol>		

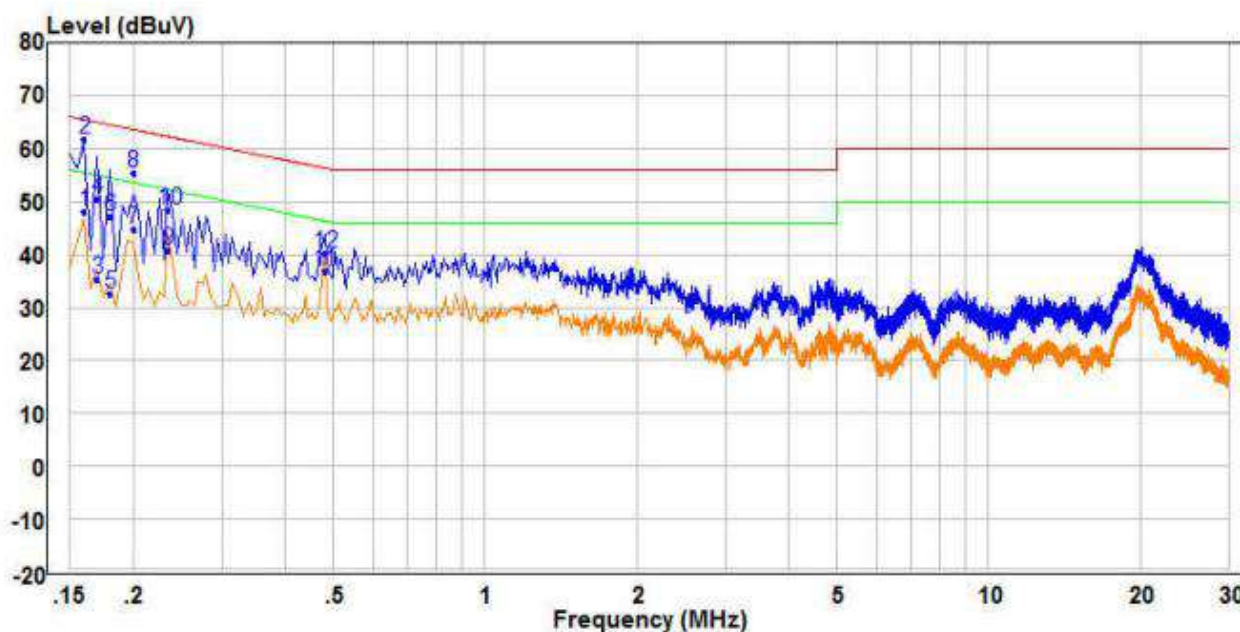
Test Setup:



Exploratory Test Mode:	Non-hopping transmitting mode with all kind of modulation and all kind of data type at the lowest, middle, high channel.
Final Test Mode:	Through Pre-scan, find the DH5 of data type and GFSK modulation at the lowest channel is the worst case. Only the worst case is recorded in the report.
Test Voltage:	AC 120V/60Hz
Test Results:	Pass

## Measurement Data

Live line:



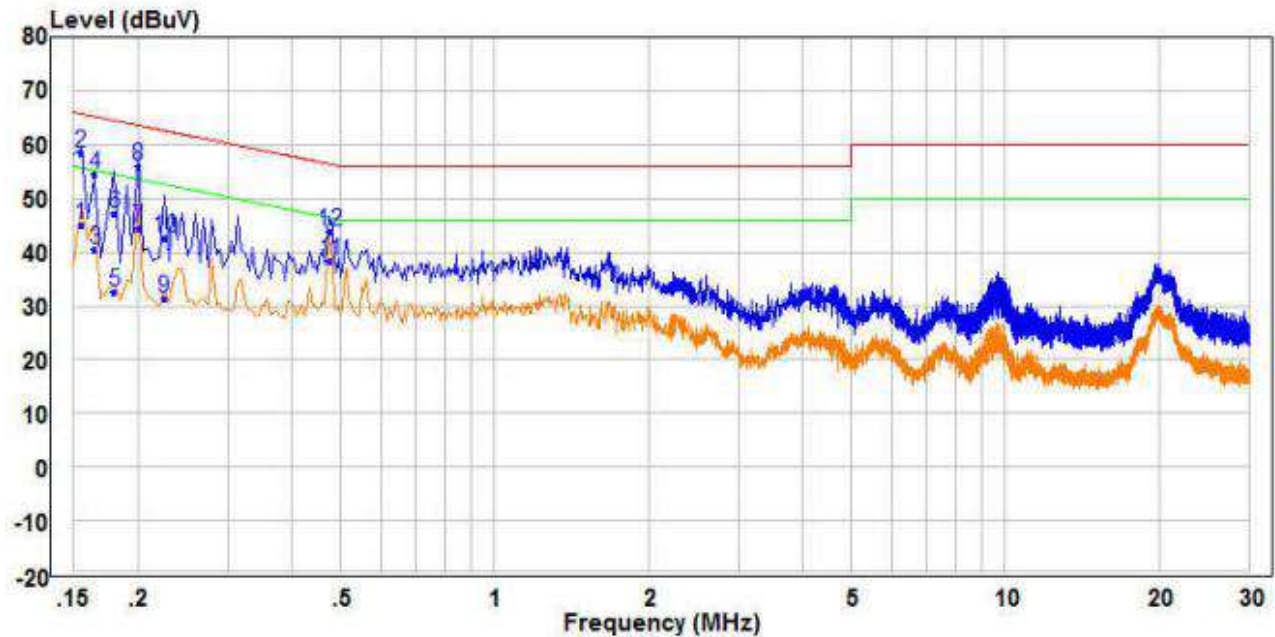
		Read		Limit	Over		
	Freq	Level	Factor	Level	Line	Limit	Remark
	MHz	dBuV	dB	dBuV	dBuV	dB	Pol/Phase
1	AV	0.160	38.62	9.49	48.11	55.46	-7.35 Average
2	PP	0.160	52.33	9.49	61.82	65.46	-3.64 QP
3		0.170	25.79	9.49	35.28	54.96	-19.68 Average
4		0.170	41.09	9.49	50.58	64.96	-14.38 QP
5		0.180	22.95	9.49	32.44	54.49	-22.05 Average
6		0.180	37.81	9.49	47.30	64.49	-17.19 QP
7		0.200	35.18	9.49	44.67	53.61	-8.94 Average
8		0.200	45.83	9.49	55.32	63.61	-8.29 QP
9		0.235	31.37	9.49	40.86	52.27	-11.41 Average
10		0.235	38.97	9.49	48.46	62.27	-13.81 QP
11		0.480	27.23	9.52	36.75	46.34	-9.59 Average
12		0.480	30.56	9.52	40.08	56.34	-16.26 QP

Remark:

1. The following Quasi-Peak and Average measurements were performed on the EUT:
2. Final Test Level =Receiver Reading + LISN Factor + Cable Loss.
3. If the Peak value under Average limit, the Average value is not recorded in the report.



Neutral line:



	Freq	Read Level	Factor	Level	Limit Line	Over Limit	Remark	Pol/Phase
	MHz	dBuV	dB	dBuV	dBuV	dB		
1	0.155	35.25	9.69	44.94	55.73	-10.79	Average	Neutral
2 PP	0.155	48.88	9.69	58.57	65.73	-7.16	QP	Neutral
3	0.165	30.96	9.67	40.63	55.21	-14.58	Average	Neutral
4	0.165	44.82	9.67	54.49	65.21	-10.72	QP	Neutral
5	0.180	22.83	9.64	32.47	54.49	-22.02	Average	Neutral
6	0.180	37.51	9.64	47.15	64.49	-17.34	QP	Neutral
7	0.200	34.90	9.61	44.51	53.61	-9.10	Average	Neutral
8	0.200	46.41	9.61	56.02	63.61	-7.59	QP	Neutral
9	0.225	21.94	9.57	31.51	52.63	-21.12	Average	Neutral
10	0.225	33.08	9.57	42.65	62.63	-19.98	QP	Neutral
11 AV	0.475	28.65	9.68	38.33	46.43	-8.10	Average	Neutral
12	0.475	34.03	9.68	43.71	56.43	-12.72	QP	Neutral

Remark:

1. The following Quasi-Peak and Average measurements were performed on the EUT:
2. Final Test Level = Receiver Reading + LISN Factor + Cable Loss.
3. If the Peak value under Average limit, the Average value is not recorded in the report.



### 5.3 Radiated Emission

Test Requirement:	47 CFR Part 15C Section 15.249 and 15.209 and 15.205				
Test Method:	ANSI C63.10: 2013				
Test Site:	Measurement Distance: 3m (Semi-Anechoic Chamber)				
Receiver Setup:	Frequency	Detector	RBW	VBW	Remark
	0.009MHz-0.090MHz	Peak	10kHz	30KHz	Peak
	0.009MHz-0.090MHz	Average	10kHz	30KHz	Average
	0.090MHz-0.110MHz	Quasi-peak	10kHz	30KHz	Quasi-peak
	0.110MHz-0.490MHz	Peak	10kHz	30KHz	Peak
	0.110MHz-0.490MHz	Average	10kHz	30KHz	Average
	0.490MHz -30MHz	Quasi-peak	10kHz	30kHz	Quasi-peak
	30MHz-1GHz	Quasi-peak	100 kHz	300KHz	Quasi-peak
	Above 1GHz	Peak	1MHz	3MHz	Peak
		Peak	1MHz	10Hz	Average
Note: For fundamental frequency, RBW=5MHz, VBW=5MHz, Peak detector is for PK value, RMS detector is for Average value.					
Limit: (Spurious Emissions and band edge)	Frequency	Field strength (microvolt/meter)	Limit (dBuV/m )	Remark	Measurement distance (m)
	0.009MHz-0.490MHz	2400/F(kHz)	-	-	300
	0.490MHz-1.705MHz	24000/F(kHz)	-	-	30
	1.705MHz-30MHz	30	-	-	30
	30MHz-88MHz	100	40.0	Quasi-peak	3
	88MHz-216MHz	150	43.5	Quasi-peak	3
	216MHz-960MHz	200	46.0	Quasi-peak	3
	960MHz-1GHz	500	54.0	Quasi-peak	3
	Above 1GHz	500	54.0	Average	3
	Note: 1) 15.35(b), Unless otherwise specified, the limit on peak radio frequency emissions is 20dB above the maximum permitted average emission limit applicable to the equipment under test. This peak limit applies to the total peak emission level radiated by the device. 2) Emissions radiated outside of the specified frequency bands, except for harmonics, shall be attenuated by at least 50 dB below the level of the fundamental or to the general radiated emission limits in Section 15.209, whichever is the lesser attenuation.				
Limit: (Field strength of the fundamental signal)	Frequency	Limit (dBuV/m @3m)		Remark	
	2400MHz-2483.5MHz	94.0		Average Value	
		114.0		Peak Value	

Test Setup:

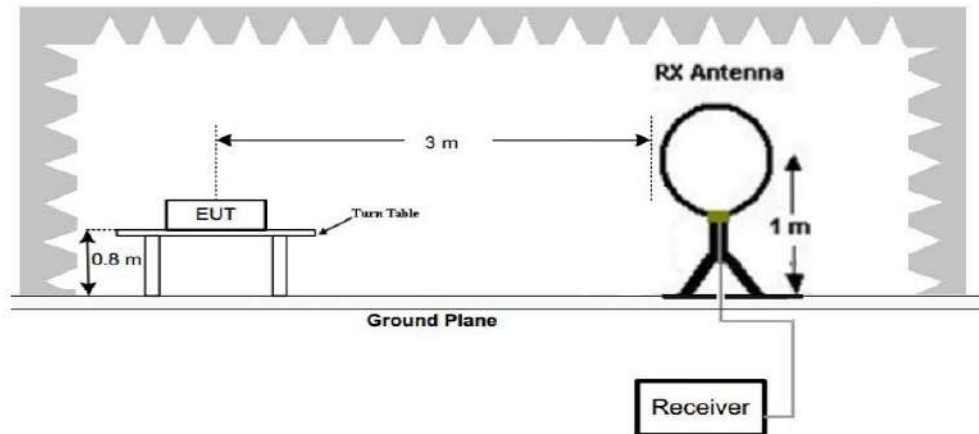


Figure 1. Below 30MHz

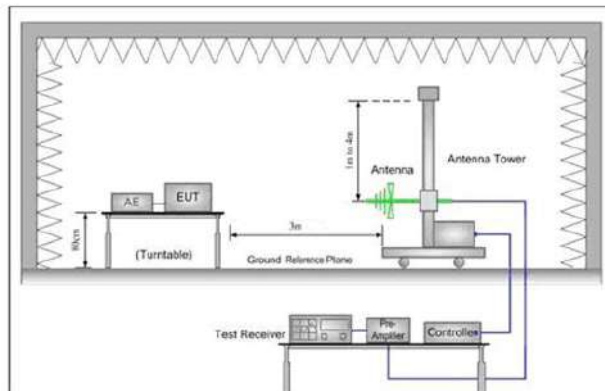


Figure 2. 30MHz to 1GHz

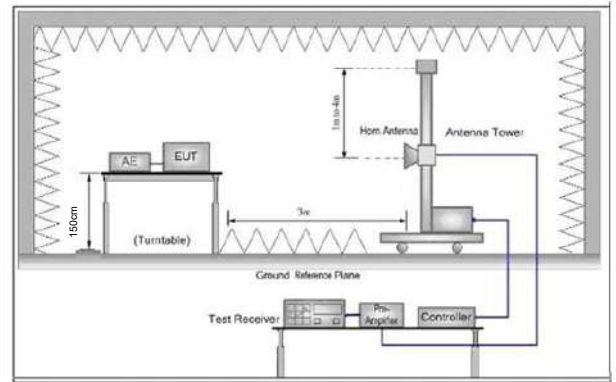


Figure 3. Above 1 GHz

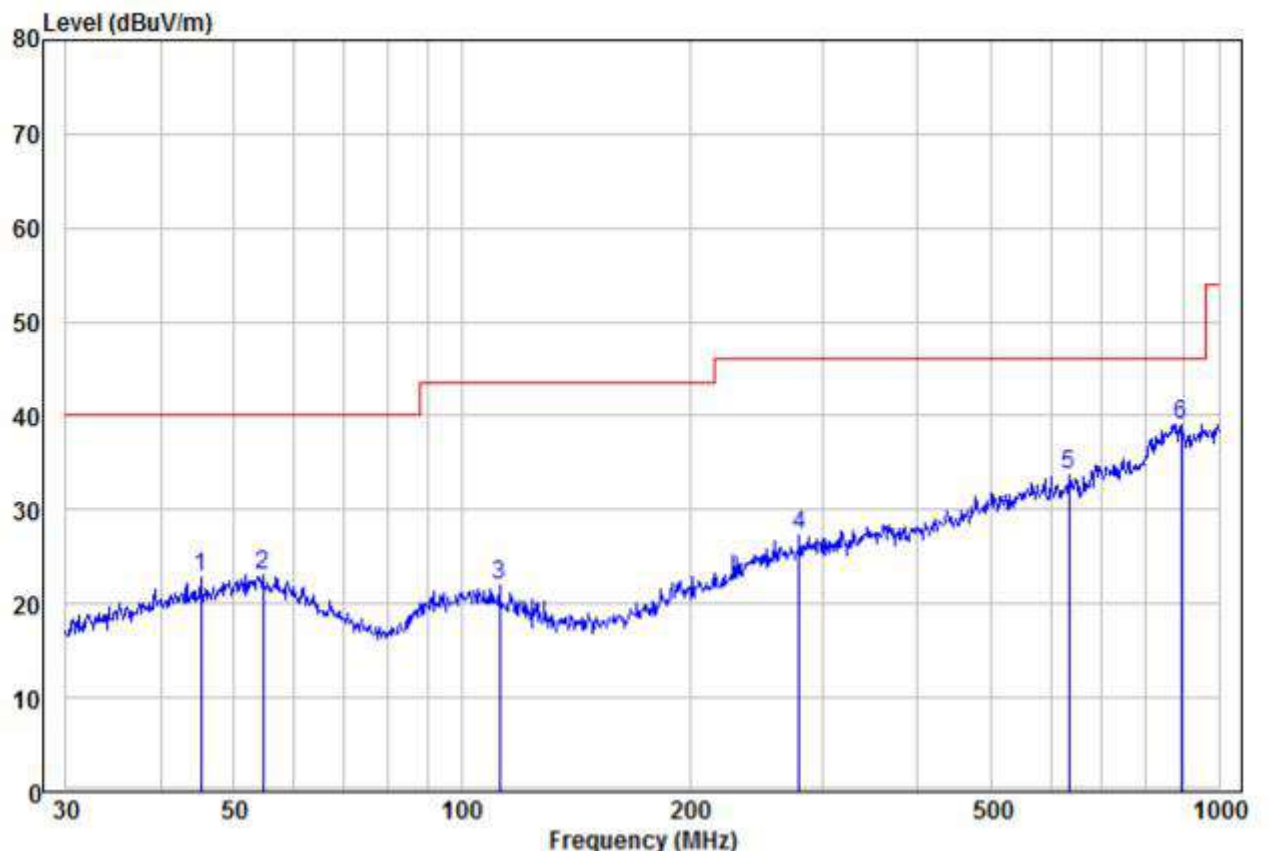
Test Procedure:

- 1) Below 1G: The EUT was placed on the top of a rotating table 0.8 meters above the ground at a 3 meter semi-anechoic chamber. The table was rotated 360 degrees to determine the position of the highest radiation.
  - 2) Above 1G: The EUT was placed on the top of a rotating table 1.5 meters above the ground at a 3 meter semi-anechoic chamber. The table was rotated 360 degrees to determine the position of the highest radiation.
- Note: For the radiated emission test above 1GHz:  
Place the measurement antenna away from each area of the EUT determined to be a source of emissions at the specified measurement distance, while keeping the measurement antenna aimed at the source of emissions at each frequency of significant emissions, with polarization oriented for maximum response. The measurement antenna may have to be higher or lower than the EUT, depending on the radiation pattern of the emission and staying aimed at the emission source for receiving the maximum signal. The final measurement antenna elevation shall be that which maximizes the emissions. The measurement antenna elevation for maximum emissions shall be restricted to a range of heights of from 1 m to 4 m above the ground or reference ground plane.
- The EUT was set 3 meters away from the interference-receiving antenna, which was mounted on the top of a variable-height antenna tower.
  - The antenna height is varied from one meter to four meters above the ground to determine the maximum value of the field strength. Both horizontal and vertical polarizations of the antenna are set to make the measurement.
  - For each suspected emission, the EUT was arranged to its worst case and then the antenna was tuned to heights from 1 meter to 4 meters (for the test frequency of below 30MHz, the antenna was tuned to heights 1 meter) and the rotatable table

	<p>was turned from 0 degrees to 360 degrees to find the maximum reading.</p> <p>e. The test-receiver system was set to Peak Detect Function and Specified Bandwidth with Maximum Hold Mode.</p> <p>f. If the emission level of the EUT in peak mode was 10dB lower than the limit specified, then testing could be stopped and the peak values of the EUT would be reported. Otherwise the emissions that did not have 10dB margin would be re-tested one by one using peak, quasi-peak or average method as specified and then reported in a data sheet.</p> <p>g. Test the EUT in the lowest channel,the middle channel,the Highest channel</p> <p>h. The radiation measurements are performed in X, Y, Z axis positioning for Transmitting mode,And found the X axis positioning which it is worse case.</p> <p>i. Repeat above procedures until all frequencies measured was complete.</p>
Exploratory Test Mode:	Transmitting mode
Final Test Mode:	<p>Pretest the EUT at Transmitting mode which it is worse case.</p> <p>For below 1GHz part, through pre-scan, the worst case is the lowest channel.</p> <p>Only the worst case is recorded in the report.</p>
Test Results:	Pass

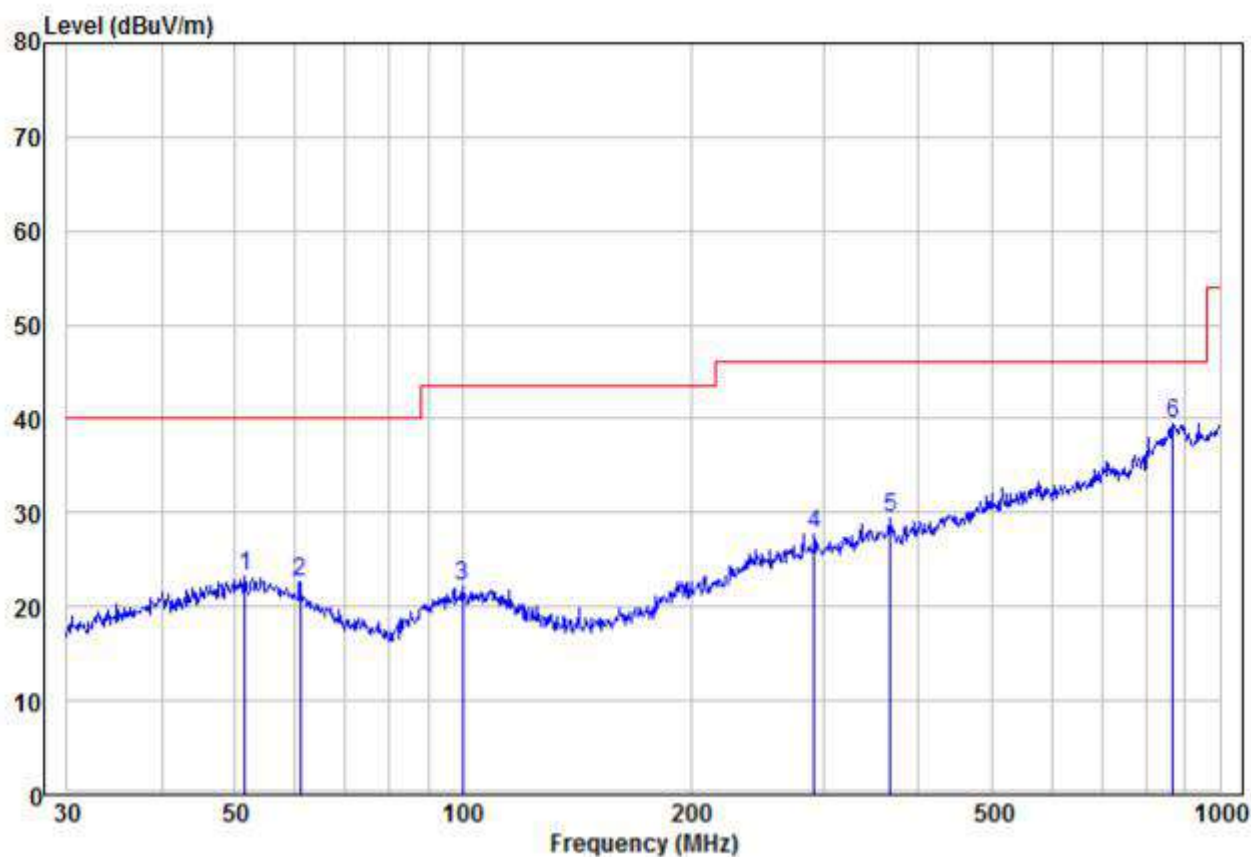
Measurement Data

30MHz~1GHz		
Test mode:	Transmitting	Vertical



	Freq	Read Level	Factor	Level	Limit Line	Over Limit	Remark	Pol/Phase	APos	TPos
	MHz	dBuV	dB/m	dBuV/m	dBuV/m	dB			cm	deg
1	45.22	9.92	12.95	22.87	40.00	-17.13	Peak	VERTICAL	100	257
2	54.64	9.28	13.82	23.10	40.00	-16.90	Peak	VERTICAL	100	55
3	112.13	9.64	12.42	22.06	43.50	-21.44	Peak	VERTICAL	100	26
4	279.04	10.03	17.19	27.22	46.00	-18.78	Peak	VERTICAL	100	153
5	633.91	10.50	23.19	33.69	46.00	-12.31	Peak	VERTICAL	100	122
6 pp	890.73	9.36	29.67	39.03	46.00	-6.97	Peak	VERTICAL	100	26

Test mode:	Transmitting	Horizontal
------------	--------------	------------



	Freq	Read Level	Factor	Level	Limit Line	Over Limit	Remark	Pol/Phase	APos	TPos
	MHz	dBuV	dB/m	dBuV/m	dBuV/m	dB			cm	deg
1	51.48	9.55	13.79	23.34	40.00	-16.66	Peak	HORIZONTAL	100	77
2	60.92	9.98	12.61	22.59	40.00	-17.41	Peak	HORIZONTAL	100	56
3	99.88	9.17	12.96	22.13	43.50	-21.37	Peak	HORIZONTAL	100	17
4	291.04	10.30	17.52	27.82	46.00	-18.18	Peak	HORIZONTAL	100	266
5	366.82	10.09	19.39	29.48	46.00	-16.52	Peak	HORIZONTAL	100	49
6 pp	869.13	10.20	29.34	39.54	46.00	-6.46	Peak	HORIZONTAL	100	16

Above 1GHz									
Test mode:		Transmitting		Test channel:		Lowest			
Frequency	Meter Reading	Factor	Emission Level	Limits	Over	Detector Type	Ant Pol	Antenna Height	Table Angle
(MHz)	(dBμV)	(dB)	(dBμV/m)	(dBμV/m)	(dB)		H/V	(m)	(Degree)
2390	59.74	-9.2	50.54	74	-23.46	Peak	H	1.5	335
2390	45.86	-9.2	36.66	54	-17.34	AVG	H	1.5	183
2400	44.35	-9.39	34.96	74	-39.04	Peak	H	1.5	66
2400	45.13	-9.39	35.74	54	-18.26	AVG	H	1.5	21
2402	99.59	-9.33	90.26	114	-23.74	peak	H	1.5	87
2402	96.09	-9.33	86.76	94	-7.24	AVG	H	1.5	315
4804	56.21	-4.28	51.93	74	-22.07	peak	H	1.5	232
4804	40.99	-4.28	36.71	54	-17.29	AVG	H	1.5	175
7206	51.64	1.13	52.77	74	-21.23	peak	H	1.5	251
7206	36.11	1.13	37.24	54	-16.76	AVG	H	1.5	302
2390	62.39	-9.2	53.19	74	-20.81	peak	V	1.5	0
2390	46.38	-9.2	37.18	54	-16.82	AVG	V	1.5	287
2400	60.53	-9.39	51.14	74	-22.86	peak	V	1.5	170
2400	46.41	-9.39	37.02	54	-16.98	AVG	V	1.5	308
2402	96.85	-9.33	87.52	114	-26.48	peak	V	1.5	154
2402	91.92	-9.33	82.59	94	-11.41	AVG	V	1.5	188
4812	57.47	-4.28	53.19	74	-20.81	peak	V	1.5	302
4812	43.53	-4.28	39.25	54	-14.75	AVG	V	1.5	292
7218	52.77	1.13	53.90	74	-20.10	peak	V	1.5	99
7218	35.80	1.13	36.93	54	-17.07	AVG	V	1.5	156

Test mode:		Transmitting		Test channel:		Middle			
Frequency	Meter Reading	Factor	Emission Level	Limits	Over	Detector Type	Ant . Pol.	Antenna Height	Table Angle
(MHz)	(dB $\mu$ V)	(dB)	(dB $\mu$ V/m)	(dB $\mu$ V/m)	(dB)		H/V	(m)	(Degree)
2440	98.96	-9.37	89.59	114	-24.41	peak	H	1.5	317
2440	96.51	-9.37	87.14	94	-6.86	AVG	H	1.5	341
4880	56.54	-4.14	52.40	74	-21.60	peak	H	1.5	129
4880	40.95	-4.14	36.81	54	-17.19	AVG	H	1.5	197
7320	50.96	0.56	51.52	74	-22.48	peak	H	1.5	216
7320	36.09	0.56	36.65	54	-17.35	AVG	H	1.5	36
2440	94.58	-9.36	85.22	114	-28.78	peak	V	1.5	73
2440	93.93	-9.36	84.57	94	-9.43	AVG	V	1.5	331
4880	55.50	-4.14	51.36	74	-22.64	peak	V	1.5	232
4880	41.30	-4.14	37.16	54	-16.84	AVG	V	1.5	9
7320	50.93	0.56	51.49	74	-22.51	peak	V	1.5	333
7320	36.88	0.56	37.44	54	-16.56	AVG	V	1.5	184



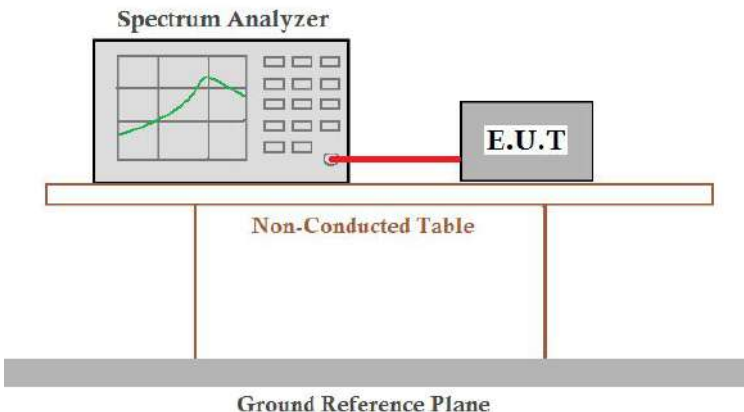
Test mode:		Transmitting		Test channel:		Highest			
Frequency	Meter Reading	Factor	Emission Level	Limits	Over	Detector Type	Ant Pol	Antenna Height	Table Angle
(MHz)	(dBμV)	(dB)	(dBμV/m)	(dBμV/m)	(dB)		H/V	(m)	(Degree)
2480	97.75	-9.23	88.52	114	-25.48	peak	H	1.5	185
2480	96.44	-9.23	87.21	94	-6.79	AVG	H	1.5	47
2483.5	62.33	-9.29	53.04	74	-20.96	Peak	H	1.5	332
2483.5	43.36	-9.29	34.07	54	-19.93	AVG	H	1.5	174
4960	55.52	-4.03	51.49	74	-22.51	peak	H	1.5	44
4960	42.26	-4.03	38.23	54	-15.77	AVG	H	1.5	18
7440	50.94	1.68	52.62	74	-21.38	peak	H	1.5	220
7440	37.70	1.68	39.38	54	-14.62	AVG	H	1.5	349
2480	95.90	-9.23	86.67	114	-27.33	peak	V	1.5	151
2480	95.04	-9.23	85.81	94	-8.19	AVG	V	1.5	278
2483.5	61.56	-9.29	52.27	74	-21.73	peak	V	1.5	184
2483.5	43.61	-9.29	34.32	54	-19.68	AVG	V	1.5	276
4960	54.78	-4.03	50.75	74	-23.25	peak	V	1.5	71
4960	42.16	-4.03	38.13	54	-15.87	AVG	V	1.5	160
7440	51.34	1.68	53.02	74	-20.98	peak	V	1.5	148
7440	36.25	1.68	37.93	54	-16.07	AVG	V	1.5	108

Remark:

- 1) The field strength is calculated by adding the Antenna Factor, Cable Factor & Preamplifier. The basic equation with a sample calculation is as follows:  
Final Test Level =Receiver Reading + Antenna Factor + Cable Factor – Preamplifier Factor
- 2) Scan from 9kHz to 25GHz,The disturbance above 10GHz and below 30MHz was very low, and the above harmonics were the highest point could be found when testing, so only the above harmonics had been displayed. The amplitude of spurious emissions from the radiator which are attenuated more than 20dB below the limit need not be reported .



## 5.4 20dB Bandwidth

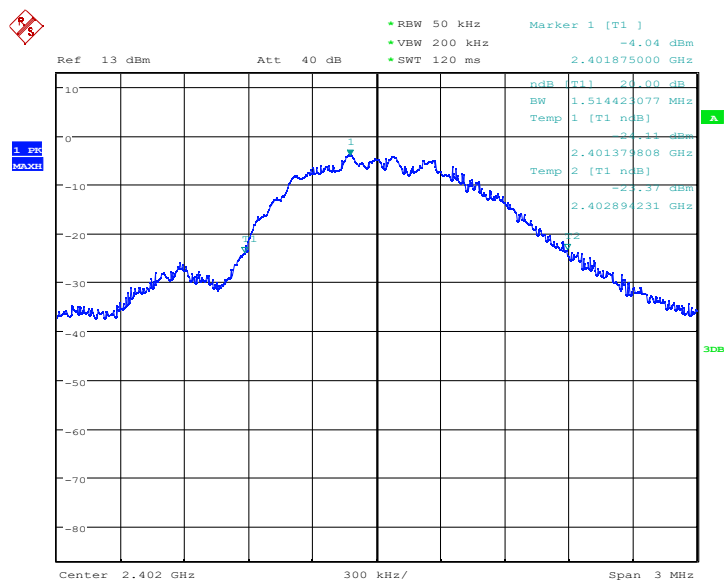
Test Requirement:	47 CFR Part 15C Section 15.215
Test Method:	ANSI C63.10:2013
Test Setup:	 <p>The diagram illustrates the test setup. A Spectrum Analyzer is connected to an E.U.T. (Equipment Under Test) via a red cable. Both the Spectrum Analyzer and the E.U.T. are placed on a Non-Conducted Table. The table is supported by two legs and sits on a Ground Reference Plane.</p>
Test Mode:	Transmitting with OFDM modulation.
Limit:	N/A
Test Results:	Pass

### Measurement Data

Test channel	20dB bandwidth (MHz)	Results
Lowest	1.514	Pass
Middle	1.524	Pass
Highest	1.548	Pass

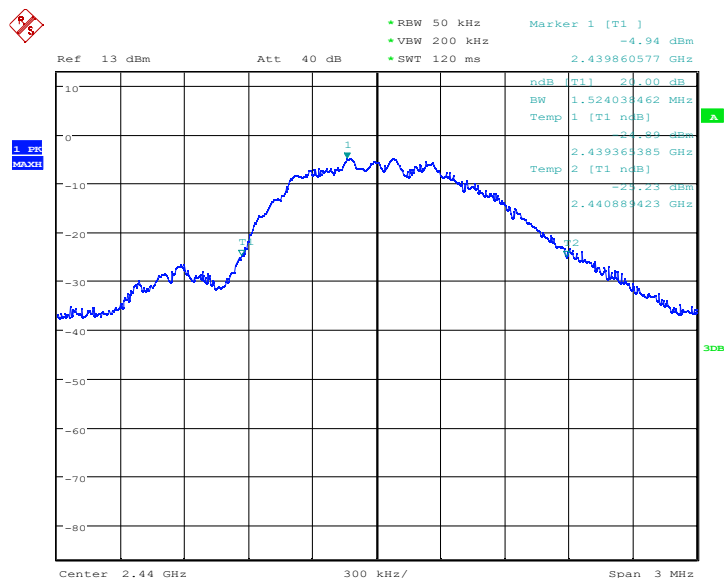
Test plot as follows:

Test channel: Lowest



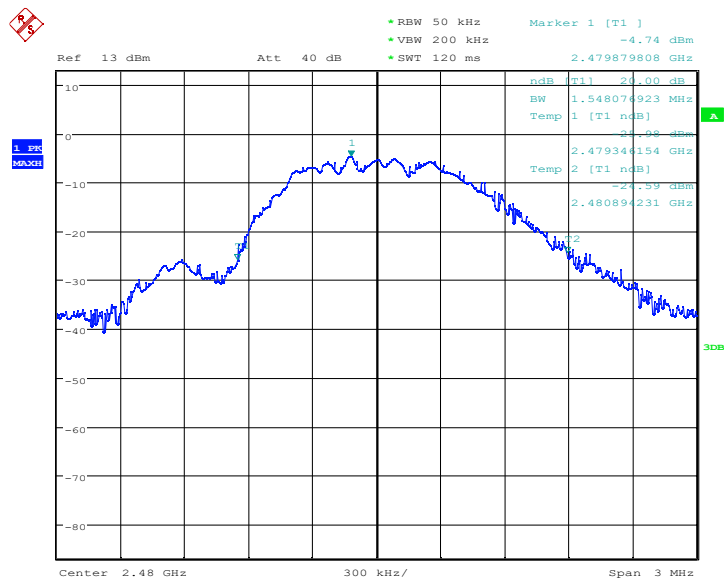
Date: 15.MAY.2025 13:56:00

Test channel: Middle



Date: 15.MAY.2025 13:58:37

Test channel: Highest

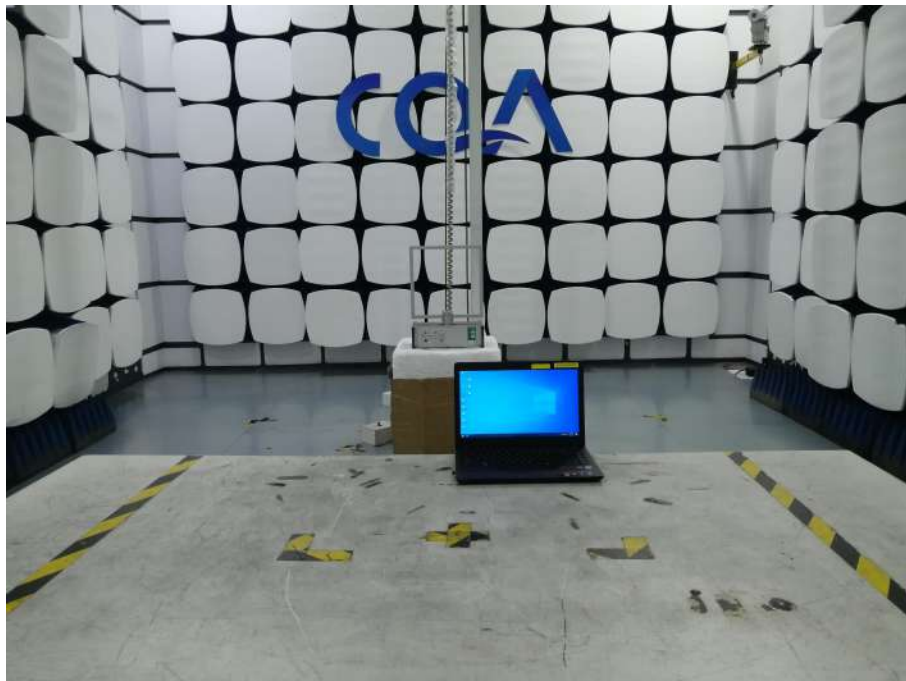


Date: 15.MAY.2025 14:00:42

## 6 Photographs

### 6.1 Radiated Emission Test Setup

9KHz~30MHz:



30MHz~1GHz:



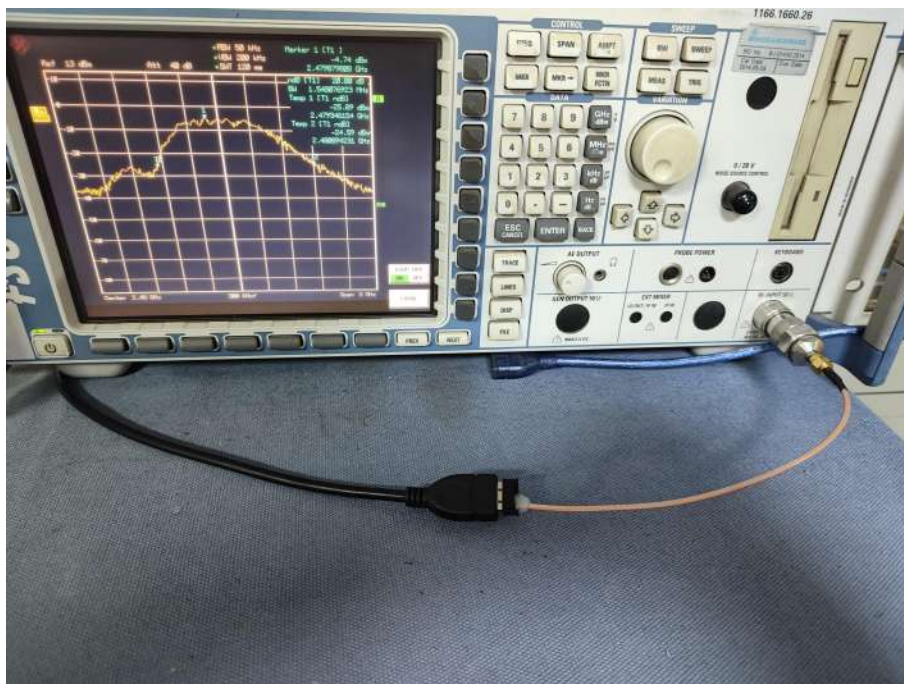
Above 1GHz:



### 6.3 Conducted Emission

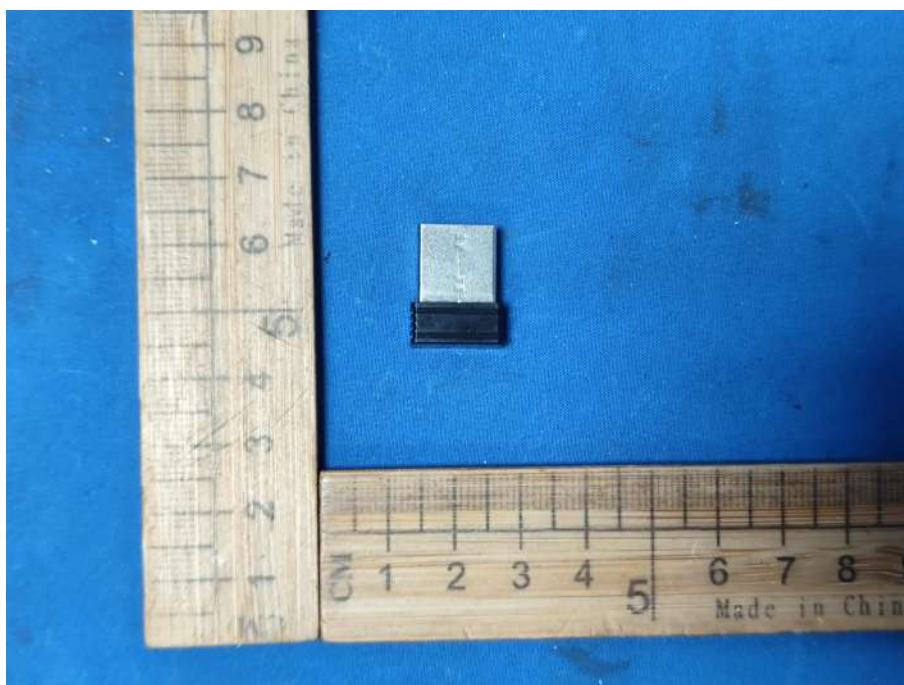
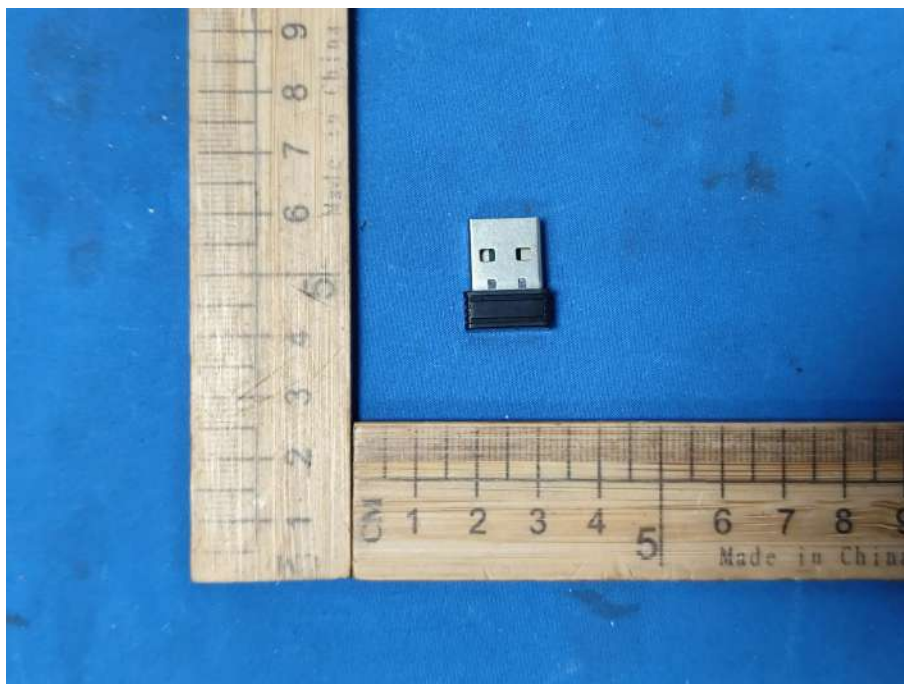


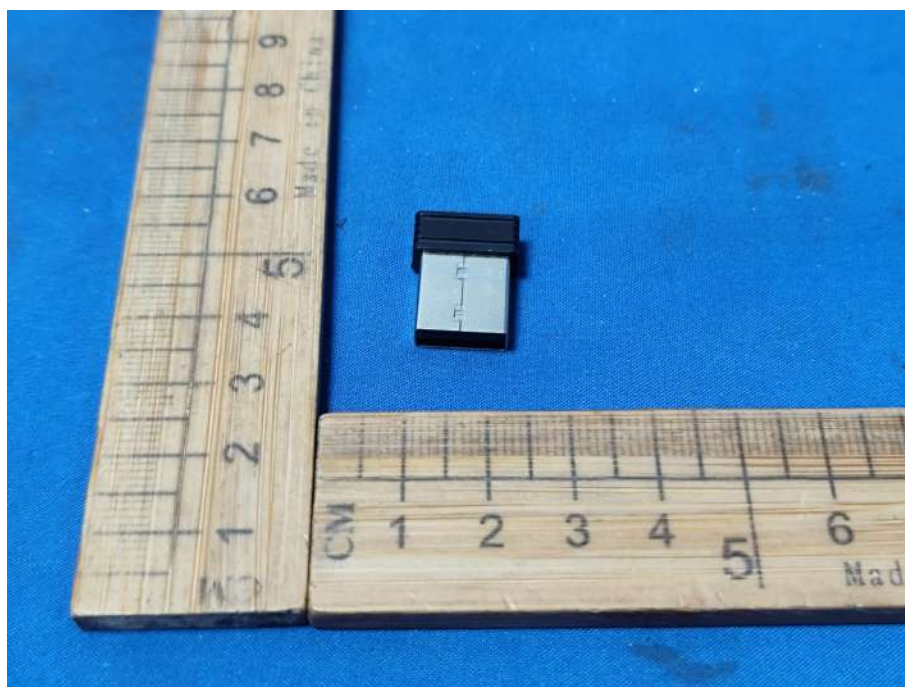
## 6.4 RF Conducted measurement



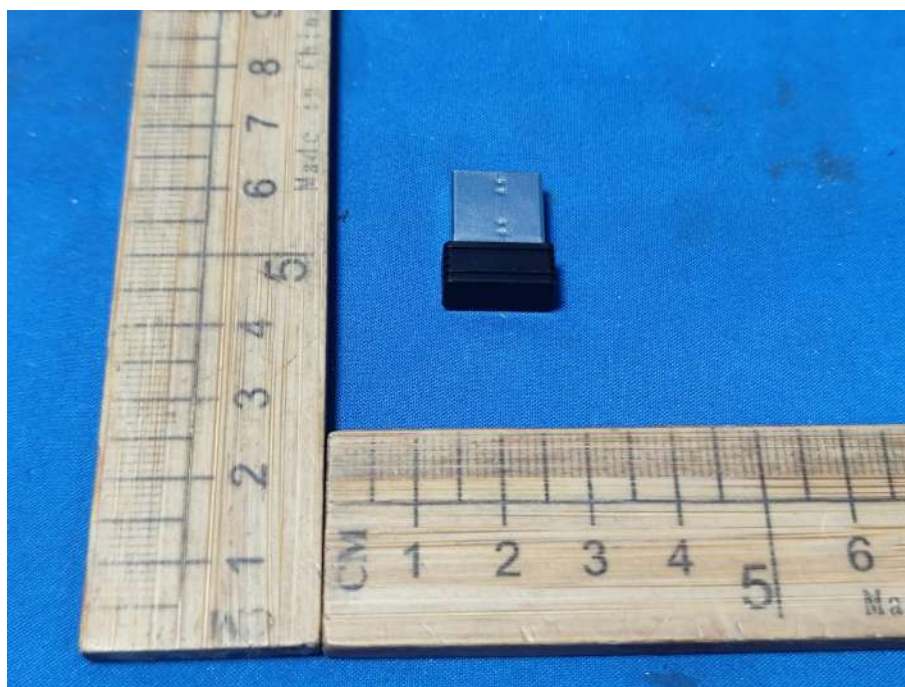
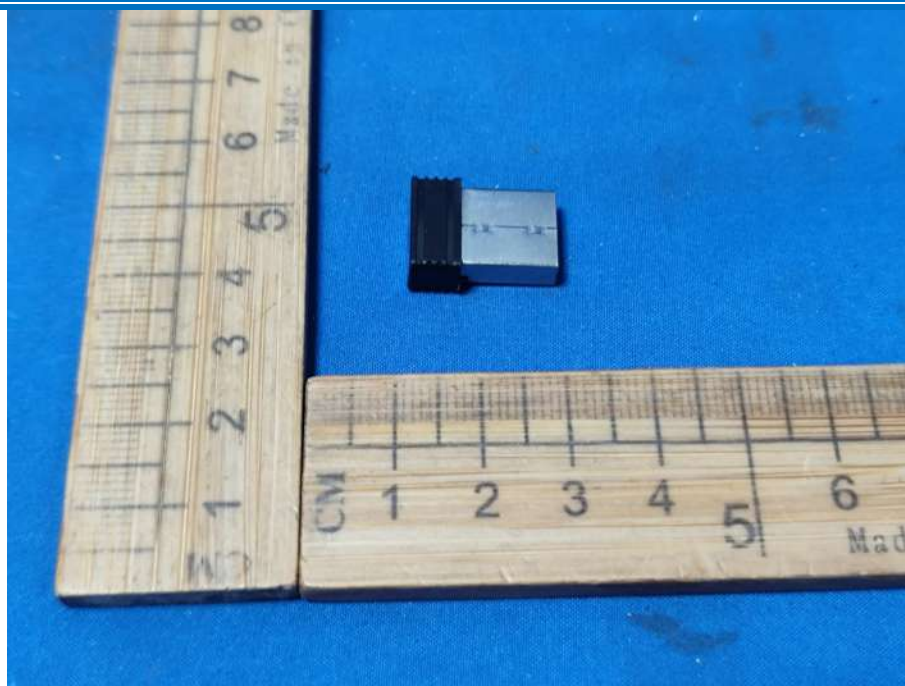


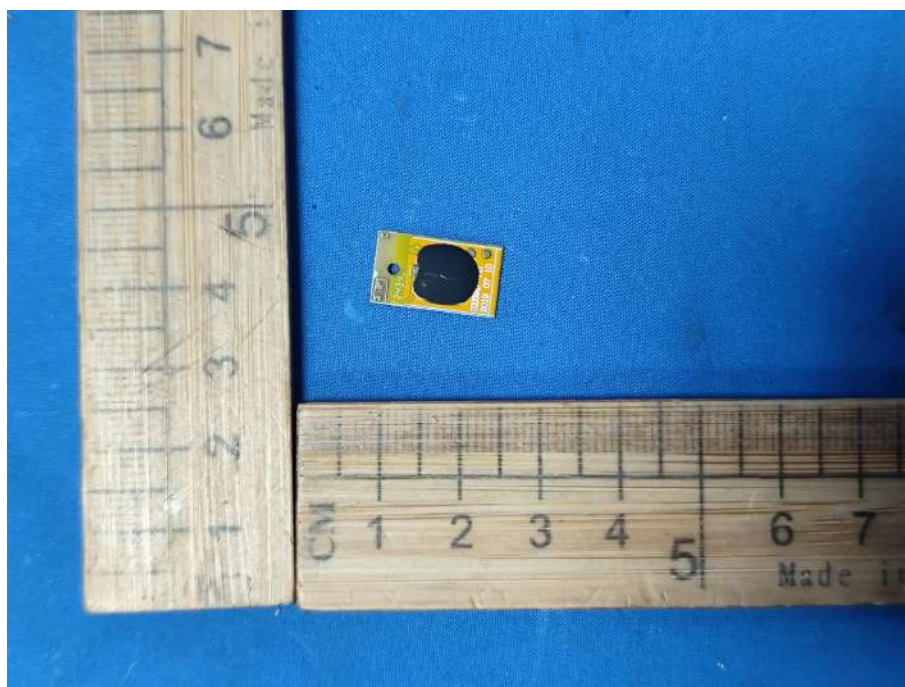
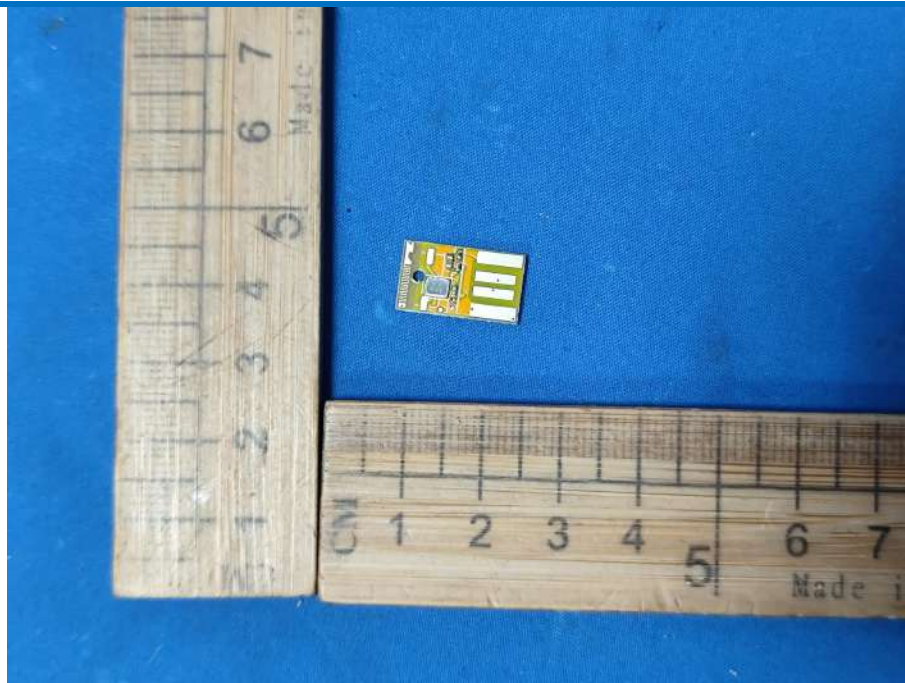
## 7 Photographs - EUT Constructional Details











\*\*\* END OF REPORT \*\*\*