

## 1. Antenna Description:

Antenna type	Internal antenna
Model	HY6-WIFI
Frequency range	2400-2500MHz, 5180-5240MHz, 5745-5825MHz
Manufacturer	Shenzhen Huayin Communication Co. LTD
ANT Peak Gain	2400-2500MHz: 0.85 dBi 5180-5240MHz: 1.12 dBi 5745-5825MHz: 1.25 dBi

## 2. Antenna Photo:

Length: 57.70mm  
Width: 5.37mm



### 3. Test Equipment & Conditions

#### 3.1 Test instrument

VSWR is tested using Agilent E5071B connected to a hand mechanism, and the status is free space.

#### 3.2 Test environment and methods

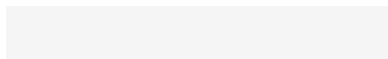
Dark room specifications: ETS-743

TD-SCDMA test equipment: StarPoint SP6010/Agilent 8960

LTE-TDD/FDD-SCDMA test equipment: StarPoint SP8011/CMW500

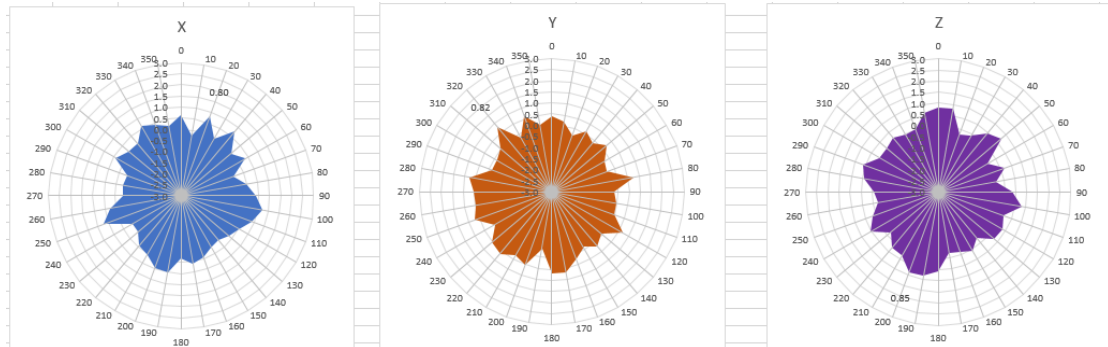
WCDMA/GSM/CDMA test equipment: Agilent 8960

Passive efficiency testing equipment: Agilent Technologies E5071B

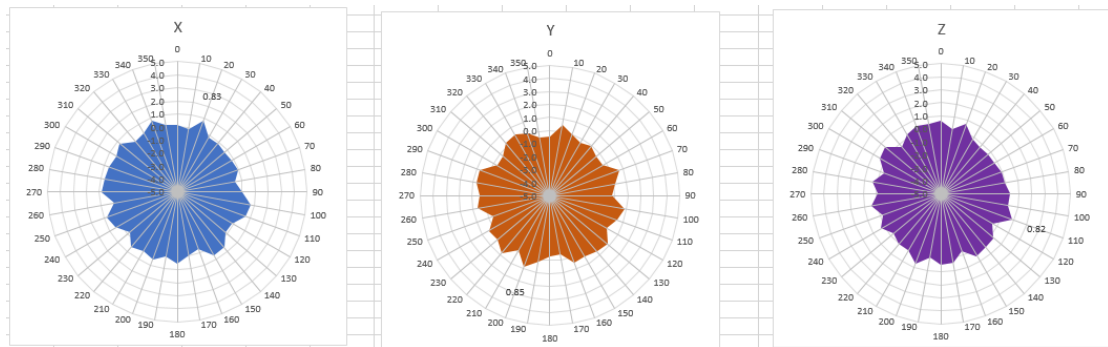


# 4 . Antenna Radiation Pattern

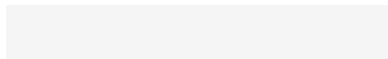
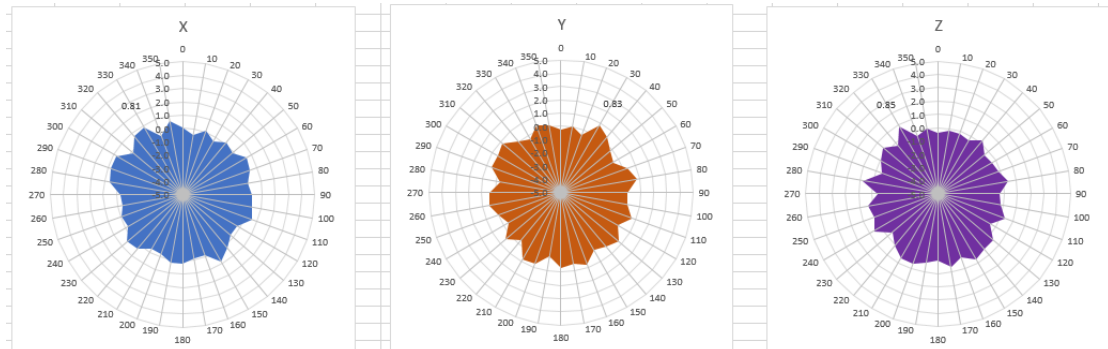
## 2400MHz



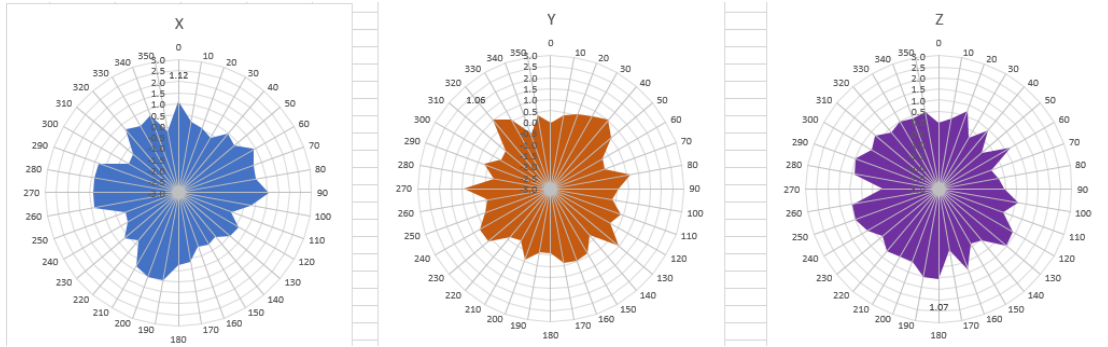
## 2450MHz



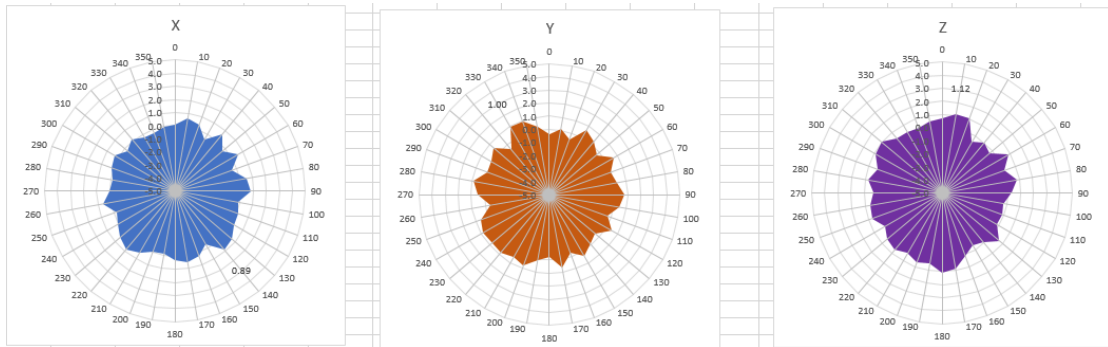
## 2500MHz



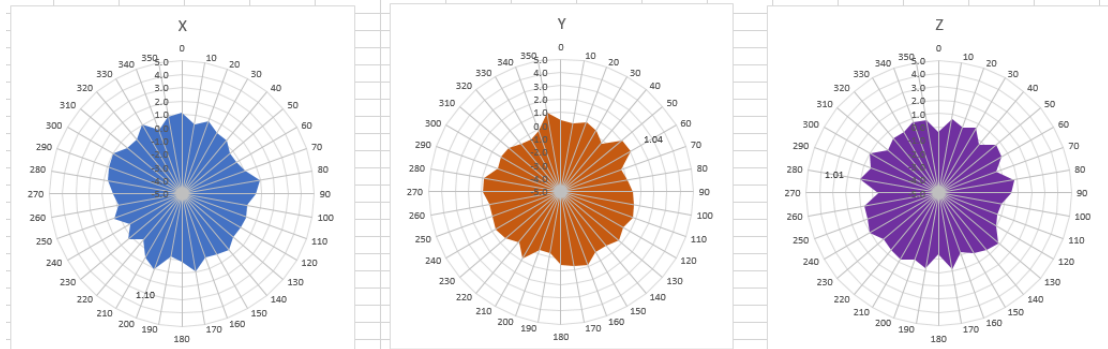
# 5180MHz



# 5200MHz

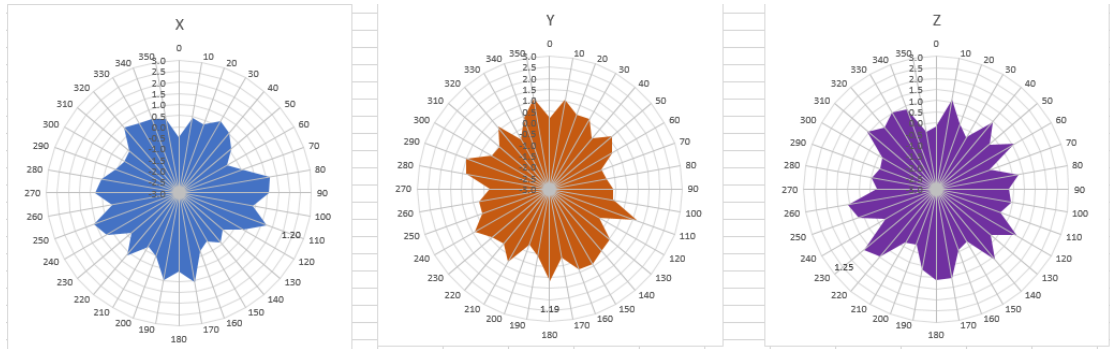


# 5240MHz

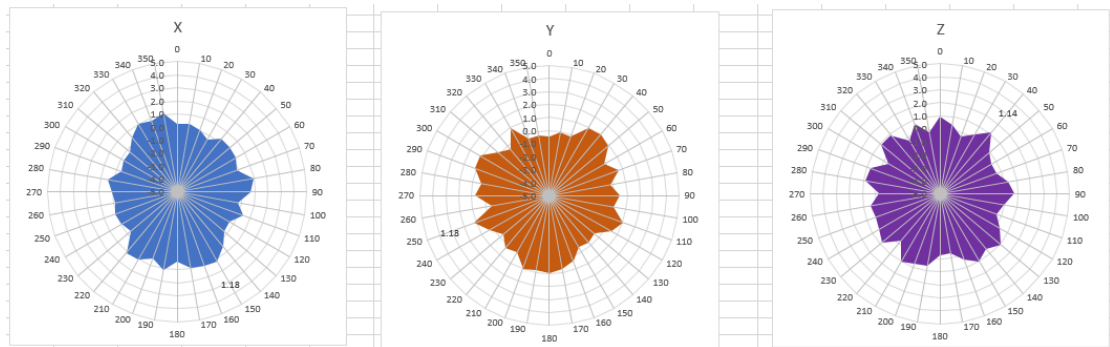




# 5745MHz



# 5785MHz



# 5825MHz

