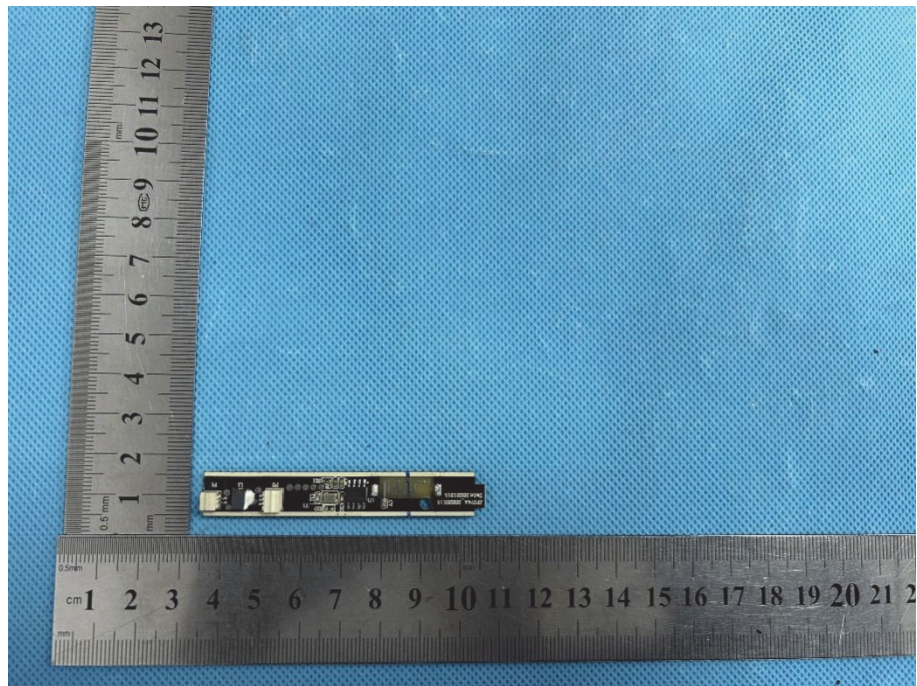
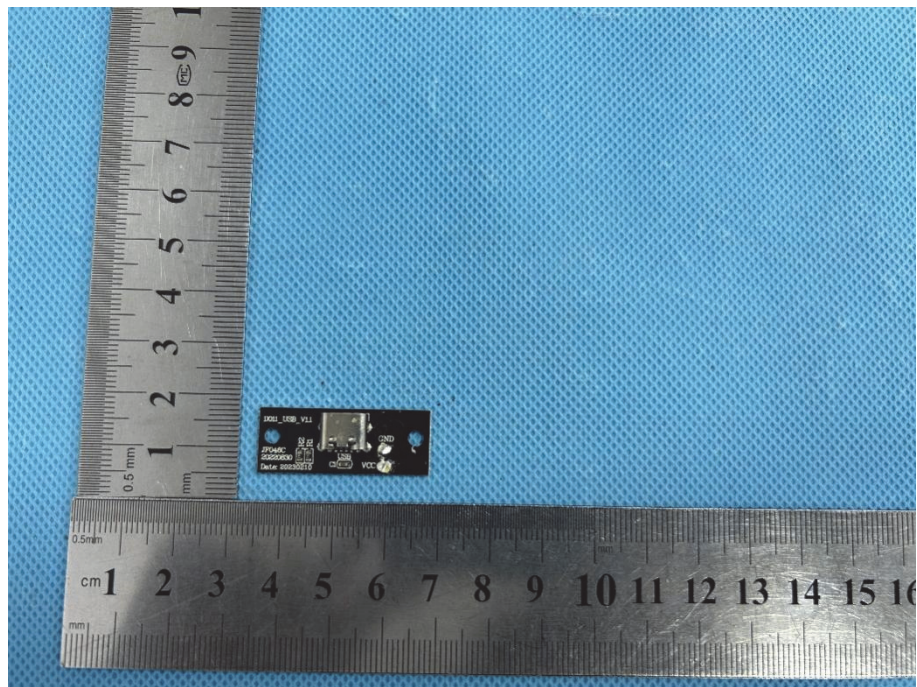
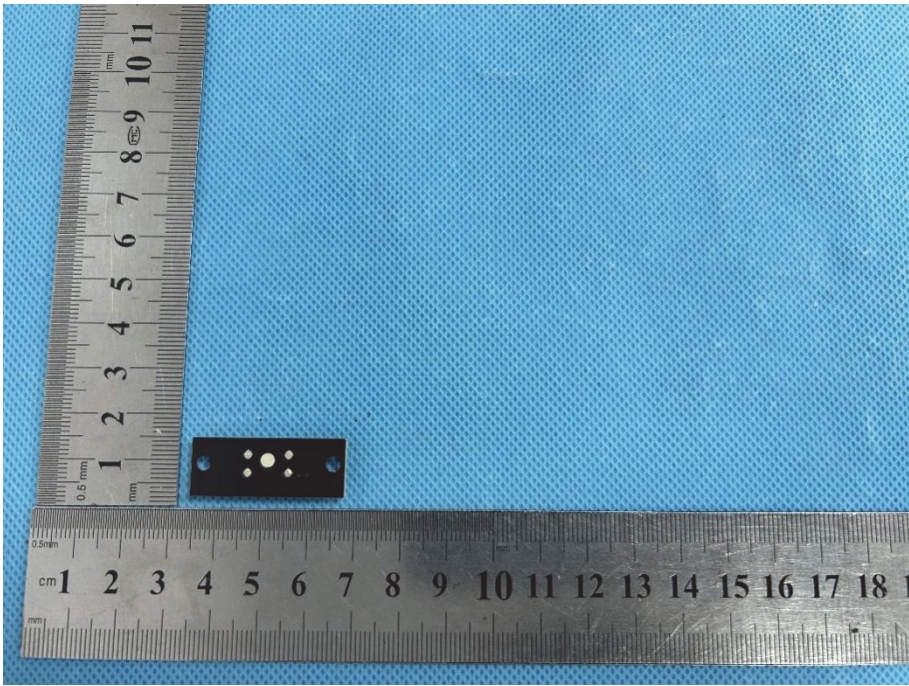
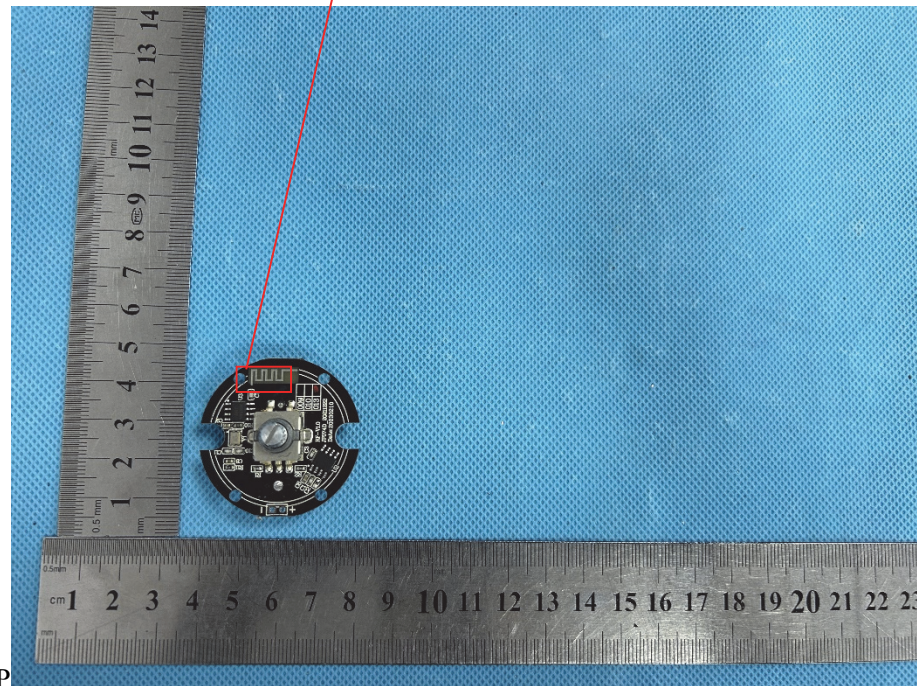


**Solder
Board-Component
View 6**

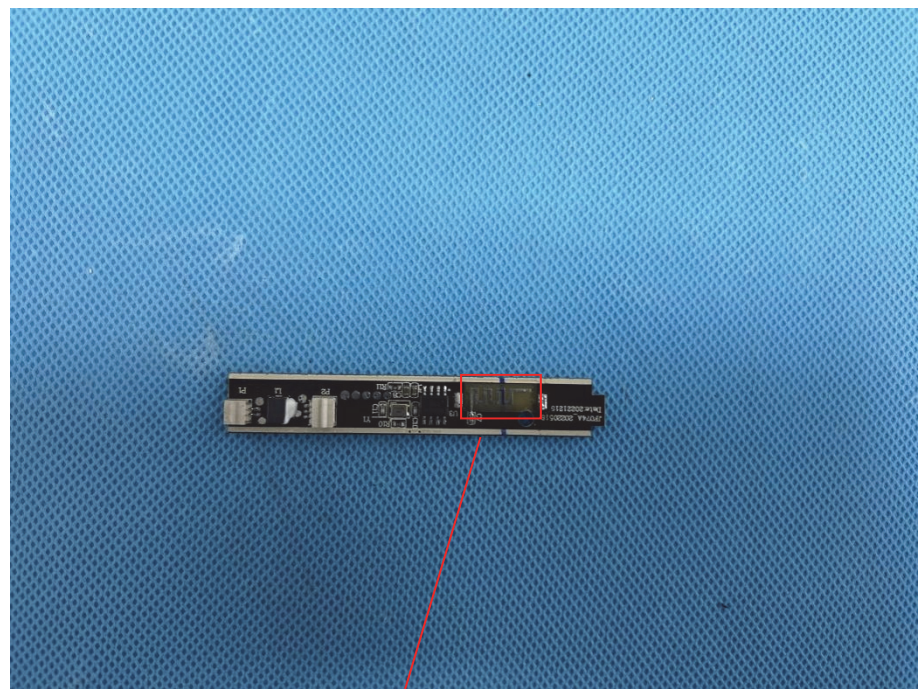


**Solder
Board-Component
View 7**



<p>Solder Board-Component View 8</p>	 <p>A photograph showing a small, dark, rectangular component with four circular solder points. The component is placed on a blue textured surface. Two metal rulers are used for scale: one vertical ruler on the left and one horizontal ruler at the bottom. The vertical ruler shows the component is approximately 1.5 mm high. The horizontal ruler shows the component is approximately 1.5 mm wide.</p>
<p>Antenna View 1</p>	<p>Transmitter Antenna</p>  <p>A photograph showing a circular printed circuit board (PCB) component with various electronic components and a central antenna structure. The component is placed on a blue textured surface. Two metal rulers are used for scale: one vertical ruler on the left and one horizontal ruler at the bottom. The vertical ruler shows the component is approximately 1.5 cm high. The horizontal ruler shows the component is approximately 1.5 cm wide. A red box highlights a specific area on the PCB, and a red line points from this box to a label 'Transmitter Antenna' located above the image. A small letter 'P' is visible in the bottom left corner of the image area.</p>

Antenna View 2



Receiver Antenna