

## Portable Projector



※User Manual※

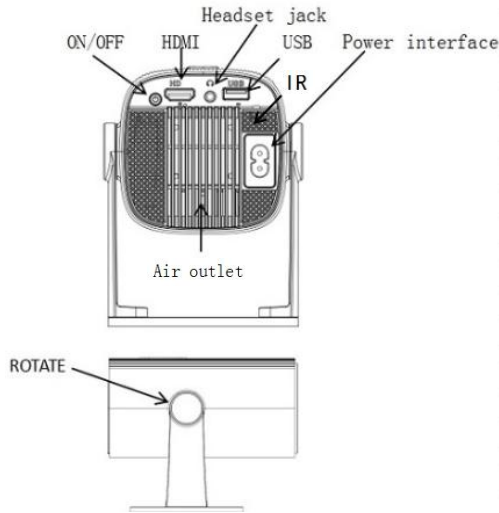
### Attention

Please read this manual carefully before use and keep it for future reference.

- 1.The projector is non dustproof or waterproof.
- 2.In order to reduce the risk of fire and electric shock, do not expose the projector to rain and fog.
- 3.Please use the original power adapter. The projector should work under specified rated power supply.
- 4.When projector is working, please do not look directly into the lens, the strong light will flash your eyes and cause slight pain. Children should use the projector under the supervision of adults.
- 5.Do not cover the vents of projector. Heating will reduce the life of projector and cause danger.
- 6.Regularly clean projector vents, or dust may cause cooling malfunction.
- 7.Do not use the projector in greasy, damp, dusty or smoky environment. Oil or chemicals will cause malfunction.
- 8.Please handle with care during daily use.
- 9.If the projector is not used for a long time, please cut off the power.
- 10.Non professionals are prohibited from dismantling, testing, and repairing the projector of this equipment on their own

### Structure Description

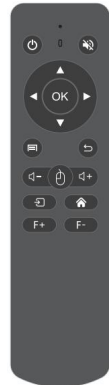
The following equipment pictures and functional descriptions are for reference only, and the actual product shall prevail. If any Modifications are subject to change without prior notice, and our company reserves the right to final interpretation.



nameplate

TOF IR

### Remote Control Function Description



Power

Mute

UP

Left OK Right

Down

Menu Back

Volume- Mouse Volume+

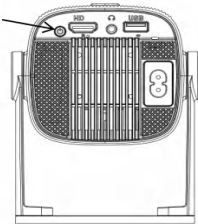
signal source HOME

Focus+ Focus-

### Power ON/OFF

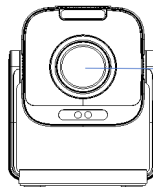
Power On  
Long press Power button on projector for 3 seconds.  
Power Off  
When the projector is power-on, press and hold the power button on the projector or the remote control for 3s to power off.

ON/OFF



### Focus Adjustment

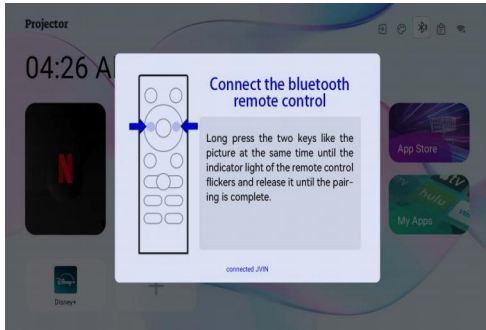
When the projector is turned on, use the focus button on the remote control to adjust the lens position to a clear state on the projector screen.



camera lens

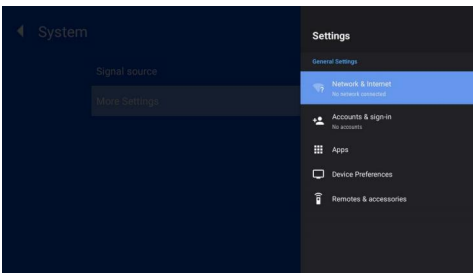
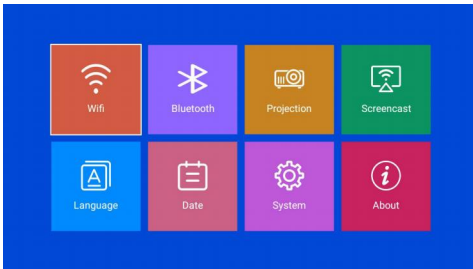
### Bluetooth remote control paired steps:

- 1, hold down the left and right keys do not let go, indicator lights start flashing, bluetooth radio open
- 2, Bluetooth options will automatically search to "JVIN" click on the connection, the connection will be successful after the prompt



### Launcher UI

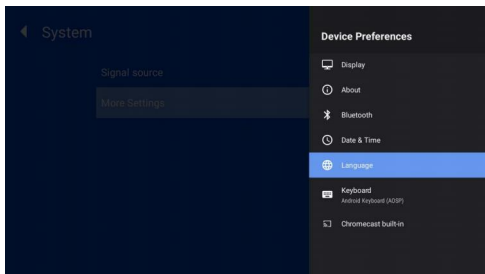
Note:Enter the setting of two displays, please refer to the actual display



### OSD Language

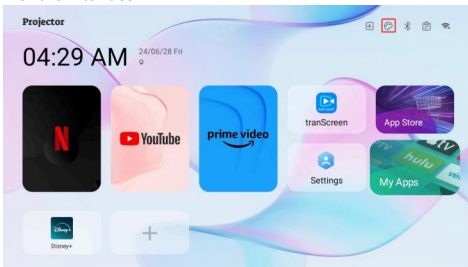
Setting - System Settings - OSD Lang > To choose your language.

**Note: The language display interface may be one of the following, please refer to the actual display**



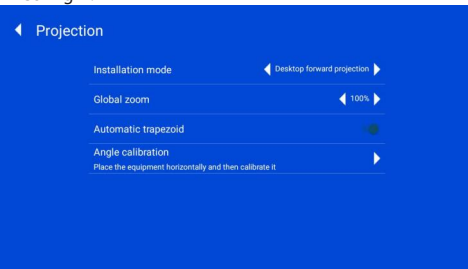
### Home Background

Select the desired main background in the upper right corner of the interface



### Projector Mode

Setting - System Settings - Flip > To select different mode according to your application scenario. Four modes are available < Front Table, Front Ceiling, Back Table, Back Ceiling >.



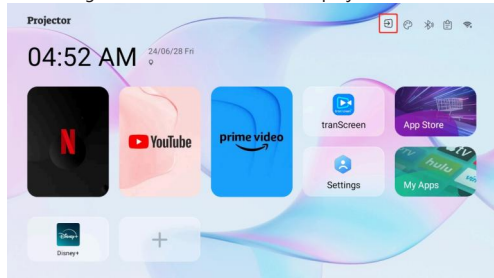
### Media Player

Insert the U disk and click the USB icon on the homepage to read the local video & music & photo & Book.



### HDMI Signal

Connect projector and external sourcing device by HDMI cable. Enter HDMI on the homepage, the signal from the sourcing device will be transmitted to projector and cast out.

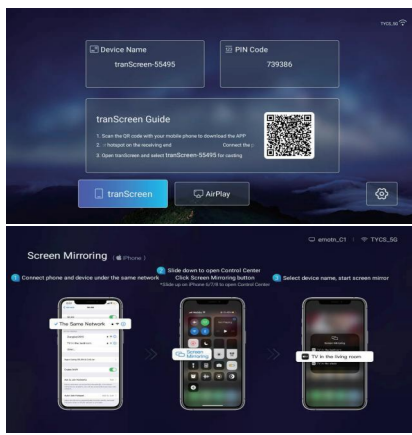


### On-screen image

Ios system

1. Connect the projection device and the mobile phone to the same network.
2. Slide down the phone to open the control center and click the screen mirror button (slide up the. iPhone6/7/8 series phone to open the control center).
3. Select the name of the device to be on the same screen and start on the same screen.

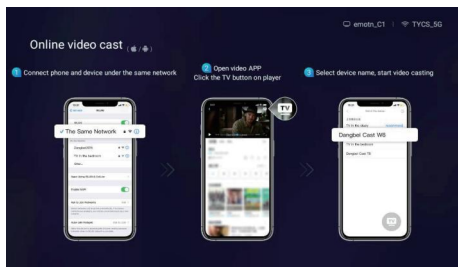
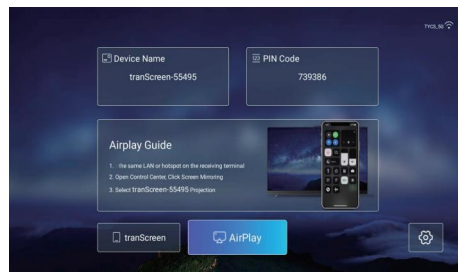
**Note: Please refer to the actual display of the same screen interface, and follow the prompts**



### Android @ISO screen projection

- 1.Connect the projection device and the mobile phone to the same network.
- 2.Open the mobile APP playback interface and click the words "Show TV".
- 3.Select the device name to complete the screen projection.

**Note: There are two projection interfaces, please refer to the actual display, and follow the prompts**



### 【Safety instructions】

• Please pay attention to important information related to the operation and maintenance of the projector. You should read this information carefully to avoid problems. Following safety instructions will increase the life of projector.

• Please consult the qualified personnel for installation and repair services, and do not use damaged wires, accessories and other peripherals.

• Projector should be kept away from flammable, explosive, strong electromagnetic interference (large radar stations, power stations, substations), etc. Strong ambient light (avoid direct sunlight), etc.

• Do not cover projector vents.

• Please use the original power adapter.

• Keep adequate ventilation and make sure vents are not covered to avoid projector overheating.

• When projector is working, please do not look directly into the lens, the strong light will flash your eyes and cause slight pain.

• Do not bend or drag the power cord.

• Do not put power cord under projector or any heavy objects.

• Do not cover other soft materials on power cord.

• Do not heat the power cord.

• Avoid touching power adaptor with wet hands.

### 【Disclaimer】

This manual is general instructions, The pictures and functions in this manual should subject to the actual product. Our company is devoting to improve product performance, we reserve the right to modify product functions and interface described in this manual without notice. Please keep your device properly.We are not responsible for any loss caused by wrong operation of software/hardware or repairing or any other reasons. We are not responsible for any loss of any third party claims. This manual has been carefully checked by professional engineer, please understand for any inevitable omissions.



### Attention:

Please do not look directly into the lens when projecting to prevent the strong light doing harm to your eyes. Kids should use the projector under the supervision of adults.

## FCC WARNING

This device complies with part 15 of the FCC Rules. Operation is subject to the following two conditions: (1) this device may not cause harmful interference, and (2) this device must accept any interference received, including interference that may cause undesired operation.

Any changes or modifications not expressly approved by the party responsible for compliance could void the user's authority to operate the equipment.

NOTE: This equipment has been tested and found to comply with the limits for a Class B digital device, pursuant to Part 15 of the FCC Rules. These limits are designed to provide reasonable protection against harmful interference in a residential installation. This equipment generates, uses and can radiate radio frequency energy and, if not installed and used in accordance with the instructions, may cause harmful interference to radio communications. However, there is no guarantee that interference will not occur in a particular installation.

If this equipment does cause harmful interference to radio or television reception, which can be determined by turning the equipment off and on, the user is encouraged to try to correct the interference by one or more of the following measures:

- Reorient or relocate the receiving antenna.
- Increase the separation between the equipment and receiver.
- Connect the equipment into an outlet on a circuit different from that to which the receiver is connected.
- Consult the dealer or an experienced radio/TV technician for help.

To maintain compliance with FCC's RF Exposure guidelines, This equipment should be installed and operated with minimum distance between 20cm the radiator your body: Use only the supplied antenna.