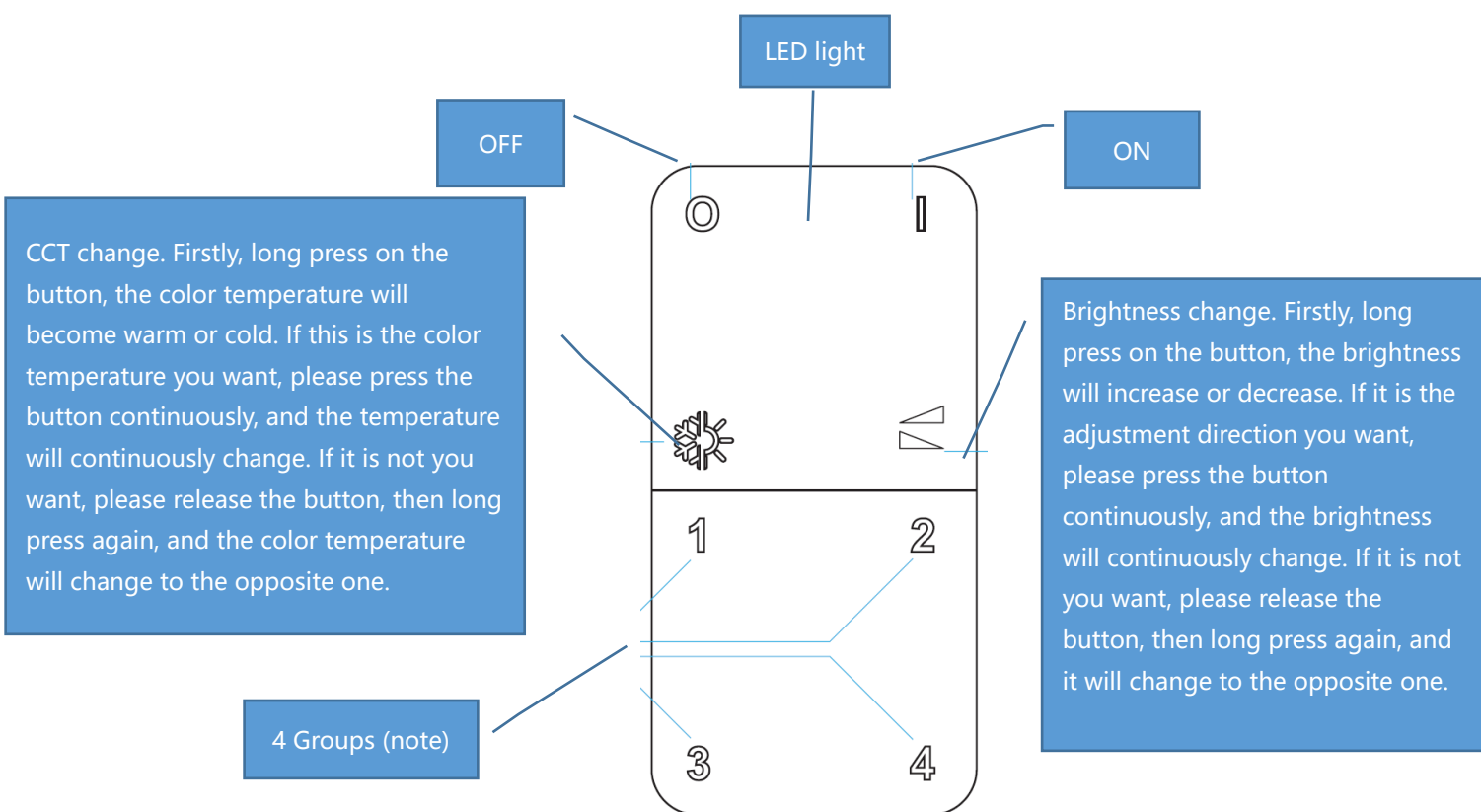


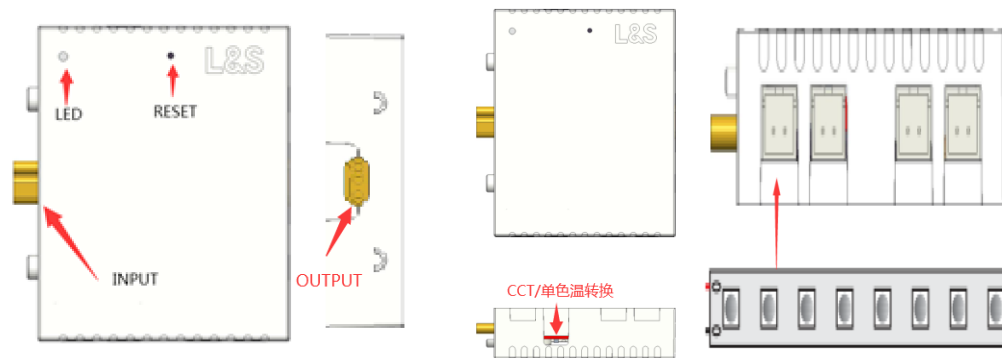
## 1.remote control button function



**Note:** short press the corresponding number to select the group to be controlled, for example short press "1", that means "group 1" is to be controlled, all subsequent operations are for the group selected last time

**Reset:** long press "off" button for 5s, LED light indicator blinks in red for 60S, if no other operations LED light indicator turn off, enter low power mode. To work again, repeat the above steps

## 2.controller button function



- (1) Input 24V power off, CCT/single CCT dip switch to select
- (2) Reset: long press "reset" button for 5s

## 3, button press instruction

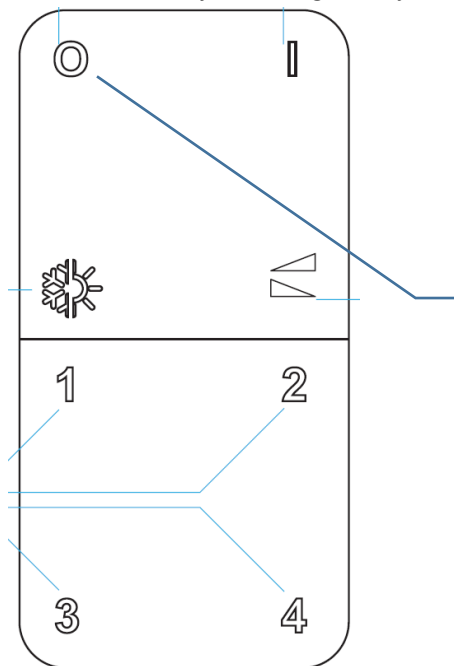
- (1) Short press, press time < 1s
- (2) Long press, press time > 5s

## 4, device working through the Hue gateway instruction

Note: the remote controller can't show on the Hue App (The buttons on the remote control are customization defined)

### (1) Join ZigBee network

- 1) remote join Hue gateway



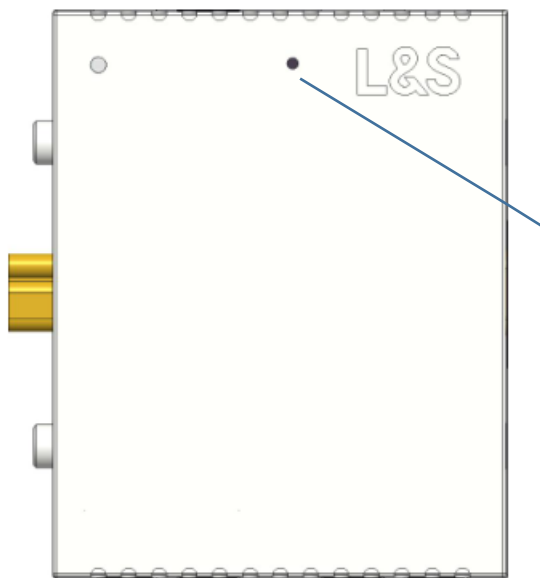
Step 1: First, exclude the device (remote controller) that has been networked., if has been networked, reset first



Step 2: Open the Hue APP and click Add Device (remote controller) to enter the pairing mode, LED light indicator stop flicker in red, light up in green and then light off that indicate pairing successfully, if not successful repeat the operation.

2) Controller join Hue gateway

Method one:



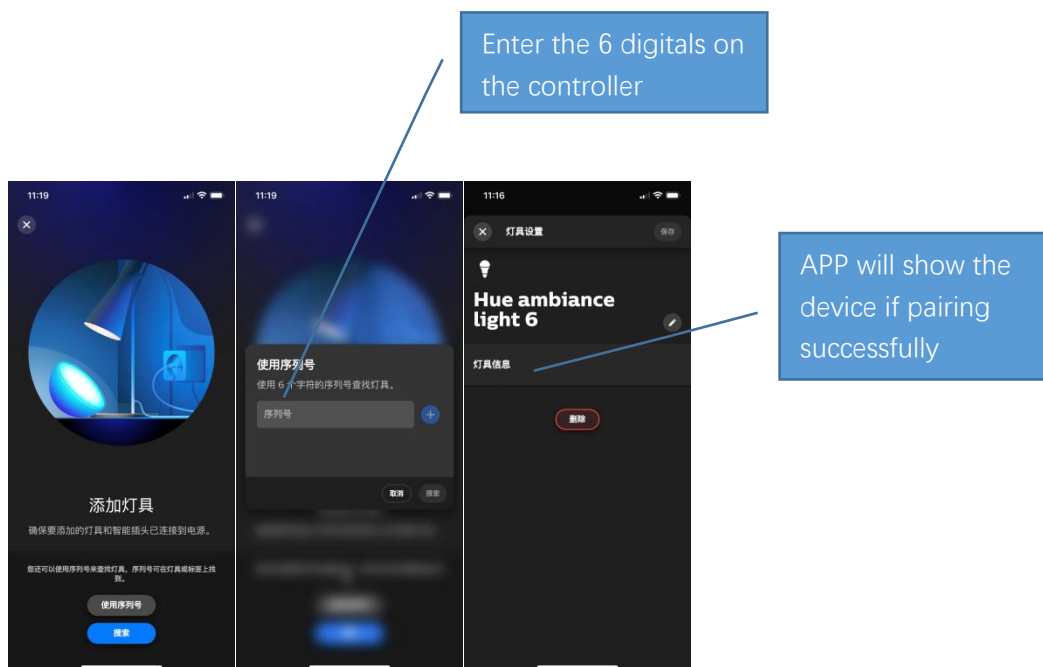
Step 1: First, exclude the device (controller) that has been networked. , if has been networked, reset first, the LED strip will light on after reset



Step2: Open the Hue APP and click Add Device, APP will show the device if pairing successfully or repeat the operation

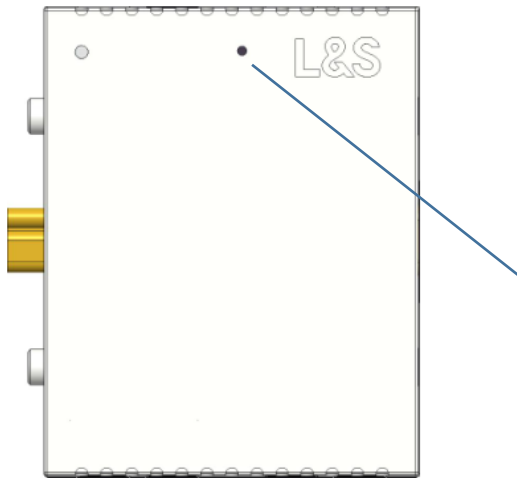
Method two:

Open HUE APP, enter the 6 digitals on the controller to pair directly, APP will show the device if pairing successfully or repeat the operation



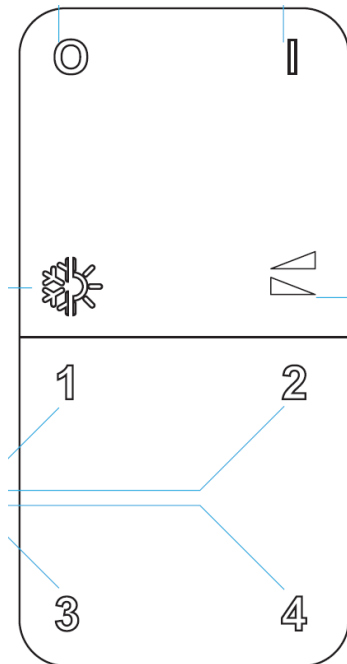
## (2) Add group and delete group instruction

### 1) controller adding group

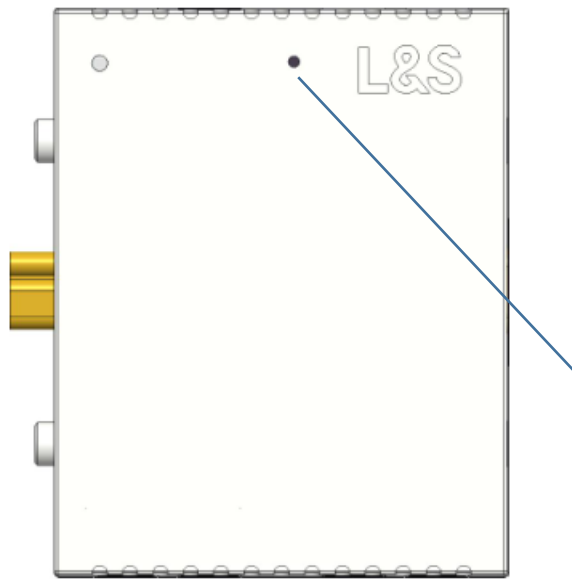


Step1: fast and short press the reset button on the controller 5 times, LED strip will enter into breathing mode) and start to group which will last 10s

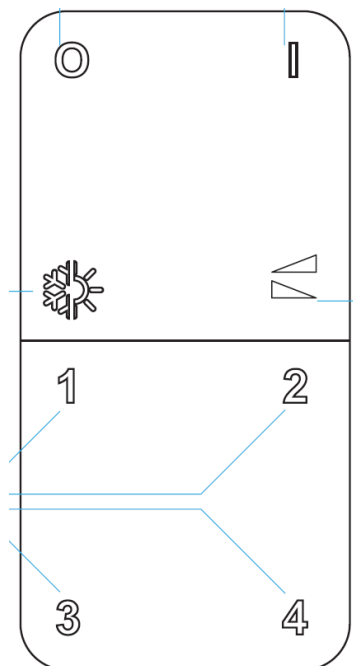
Step2: fast and short press corresponding number on the remote controller 2 times, LED strip stop breathing means group successful



- 2) delete group
- a. delete one of the device in the group

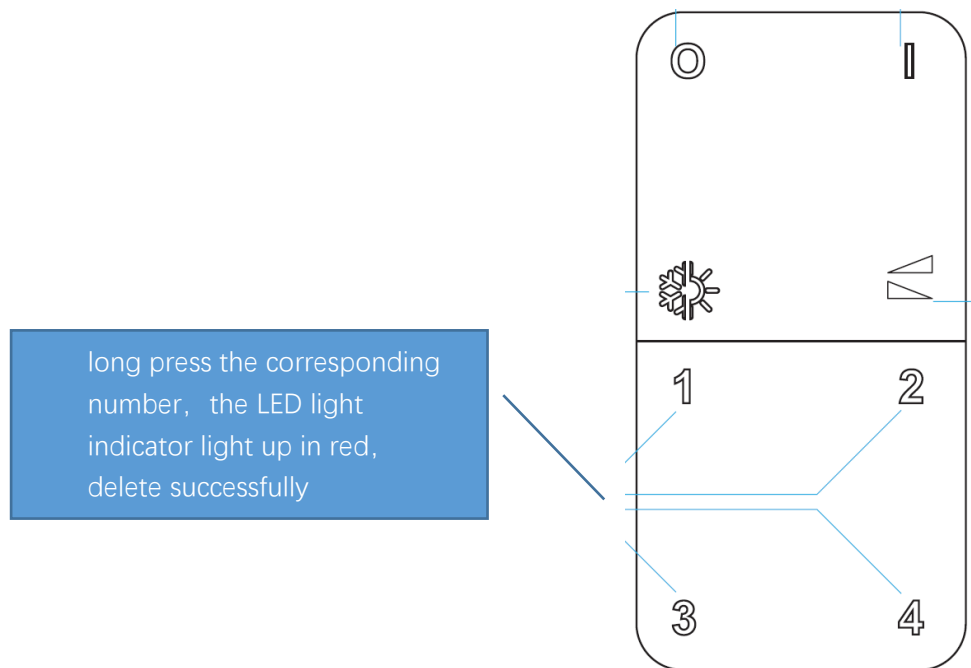


Step1: fast and short press the reset button on the controller, LED strip will enter into breathing mode



Step2: fast and short press the corresponding number on the remote controller 4 times, LED strip stops breathing, delete successfully

b. delete all the device at the remote controller group

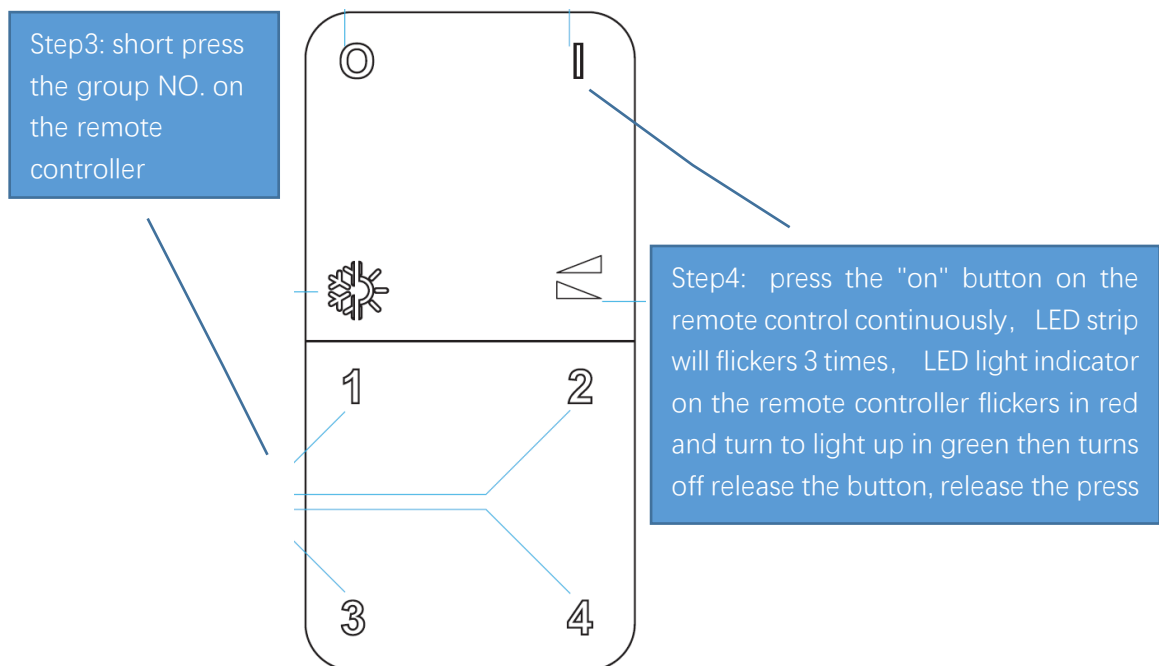


## 5. pairing through Touchlink

(1) Join ZigBee network and group

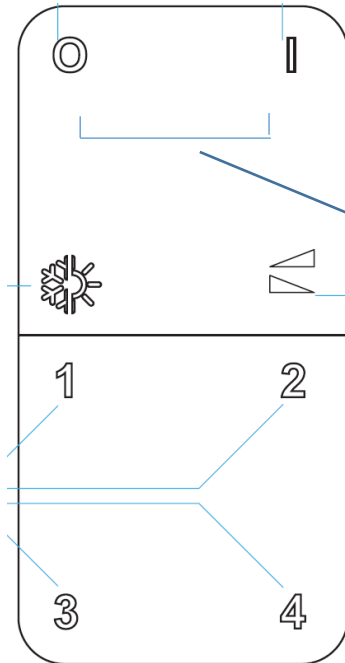
Step1: reset the remote controller,

Step2: Make the distance between the remote controller and the device (controller and LED strip) less than 15cm



(2) Exit ZigBee network and group

Step1: Make the distance between the remote controller and the device (controller and LED strip) less than 15cm.



Step2: long press on + off button, LED strip will flicker 3 times and then light up

#### 6. connect RC to ZigBee controller Sunricher type SR-ZG1029 through Touchlink



Step1: short press this button 5 times to reset the receiver, the LED strip will flicker, and then turn to light on

Step2: long press off button on remote controller to reset and the indicator light will flicker in red

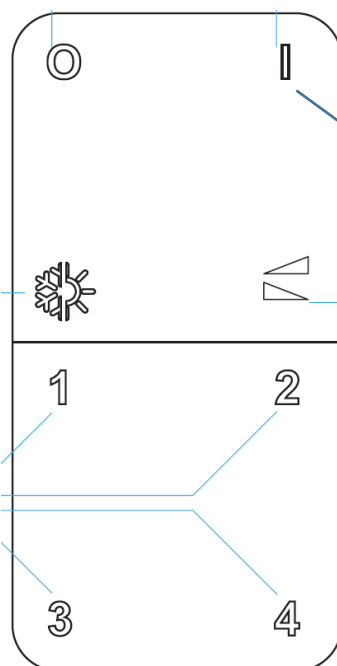




Step3: short press this button 4 times to start the Touchlink commission, waiting light indicator on the remote controller stops flickers in red and turn to light up in green then turns off

Step4: make the distance between the remote controller and the device (controller and LED strip) less than 15cm

Step5: short press the group NO. on the remote controller



Step 6: press the "on" button on the remote control continuously, LED strip will flickers 3 times, LED light indicator on the remote controller flickers in red and turn to light up in green then turns off release the button, release the press

#### FCC Statement

changes or modifications not expressly approved by the party responsible for compliance could void the user's authority to operate the equipment.

This device complies with Part 15 of the FCC Rules. Operation is subject to the following two conditions: (1) this device may not cause harmful interference, and (2) this device must accept any interference received, including interference that may cause undesired operation.

This equipment has been tested and found to comply with the limits for a Class B digital device, pursuant to part 15 of the FCC Rules. These limits are designed to provide reasonable protection against harmful interference in a residential installation. This equipment generates, uses and can radiate radio frequency energy and, if not installed and used in accordance with the instructions, may cause harmful interference to radio communications. However, there is no guarantee that interference will not occur in a particular installation. If this equipment does cause harmful interference to radio or television reception, which can be determined by turning the equipment off and on, the user is encouraged to try to correct the interference by one or more of the following measures:

- Reorient or relocate the receiving antenna.
- Increase the separation between the equipment and receiver.
- Connect the equipment into an outlet on a circuit different from that to which the receiver is connected.
- Consult the dealer or an experienced radio/TV technician for help.

## FCC Supplier's Declaration of Conformity

Product Name: Remote Controller

Model number : RR-CONTROL-EASYLUX-1+4-CH, Remote control 4-chan

Suppliers Name: VISHTEC LLC

Suppliers Address (USA) : 9888 W Belleview Ave Ste 2142 Denver CO 80123

Suppliers Website: N/A

Contact Email/Telephone: Alan.graham@vish-tec.com / (571) 4007350

### FCC Compliance Statement:

This device complies with Part 15 of the FCC Rules. Operation is subject to the following two conditions:

- (1) this device may not cause harmful interference, and
- (2) this device must accept any interference received, including interference that may cause undesired operation.

Signature : [Alan Graham]

For and on behalf of  
**VISHTEC LLC**  
  
.....  
Authorized Signature(s)

Print name:

Date of issue: January 10, 2024