
Antenna Gain Test Report

Project No.: 4791107448

Client Name: L&S Lighting Equipment (Shanghai) Co., Ltd.

Client Address: Building No.1, Lane 255 Longpan Road, Malu Town, Jiading District, Shanghai, China

Product Name: Wireless Controller
LED-CONTROL-MODULE-EASYLUX-12V-1

Product Model:

Manufacture Name: L&S Lighting Equipment (Shanghai) Co., Ltd.

Manufacture Address: Building No.1, Lane 255 Longpan Road, Malu Town, Jiading District, Shanghai, China

Antenna Type: PCB

Antenna Size: 8.5mm*10.7mm

Project Engineer: James Qin

Test Standards: ANSI/IEEE std 149-2021

Test Date: 2023.12.26

Issued Date: 2023.12.26

UL Verification Services (Guangzhou) Co., Ltd, Song Shan Lake Branch

*This report shall not be reproduced except in full, without the written approval of UL Verification Services (Guangzhou) Co., Ltd,
Song Shan Lake Branch.*

Revision History

Rev.	Issue Date	Revisions	Revised By
V0	2023.12.26	Initial Issue	\

Table of Contents

1	Test Equipment Information.....	4
2	Setup block diagram	5
3	Test Temperature and Humidity	6
4	Test Step Flow	7
5	Test Result	8
6	Photo	12

1 Test Equipment Information

Equipment	Manufacturer	Mode No.	Serial No.	Cal date	Cal Due
Test Chamber	ETS-Lindgren	8500	/	/	/
Test Software	ETS-Lindgren	EMQuest V1.12	1496	/	/
Network Analyzer	Keysight	E5071C	MY46524531	2023.10.12	2024.10.11
EXA Singal Analyzer	Keysight	N9010A	MY55150514	2023.10.12	2024.10.11

UL Verification Services (Guangzhou) Co., Ltd, Song Shan Lake Branch

*This report shall not be reproduced except in full, without the written approval of UL Verification Services (Guangzhou) Co., Ltd,
Song Shan Lake Branch.*

3 Test Temperature and Humidity

Temperature: 21.5°C

Humidity: 53.6%

4 Test Step Flow

- 1) Maintain the test ambient temperature of 23 ± 2 C, the instrument is powered on and preheated for more than 30 minutes;
- 2) Turn on the darkroom power supply, connect the test cable, and set up the sample according to the standard;
- 3) Outline sets the test content objectives and conducts calibration tests;
- 4) Run the software, when the test is completed, export the corresponding test diagram and test data, and save to the corresponding directory.

5 Test Result

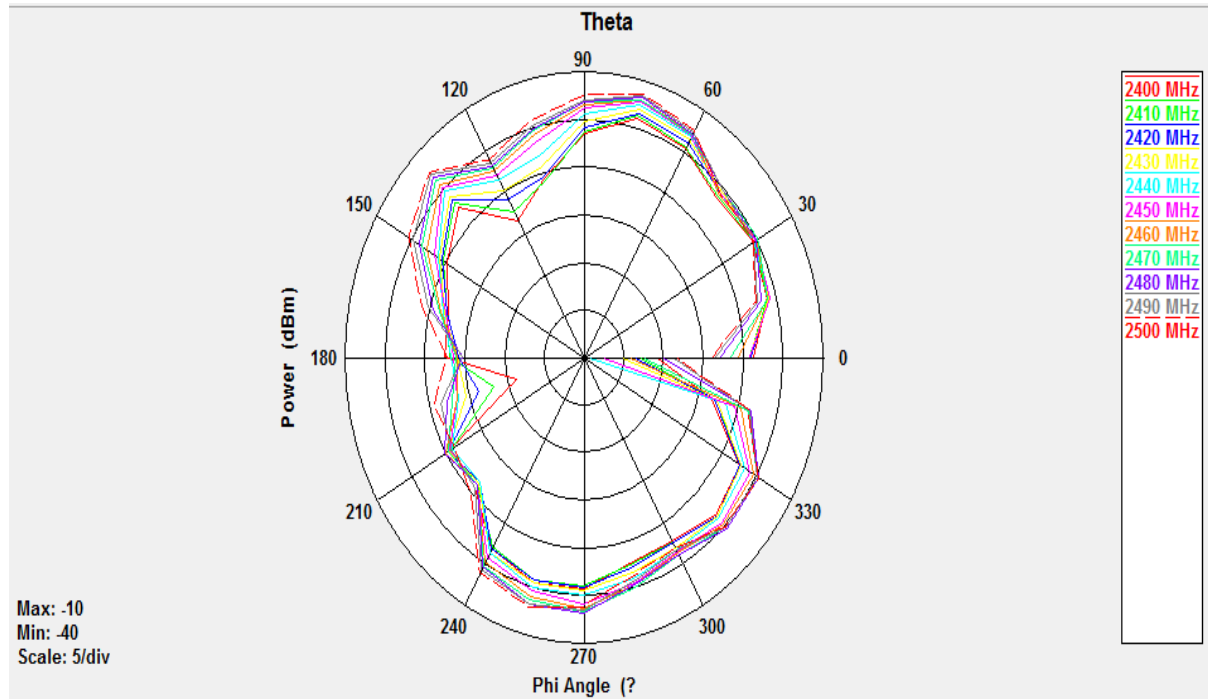
Frequency (MHz)	Efficiency (%)	Gain (dBi)
2400	10.64	-2.50
2410	10.57	-2.53
2420	10.81	-2.41
2430	11.31	-2.21
2440	11.50	-2.09
2450	11.77	-2.01
2460	11.84	-2.00
2470	12.06	-2.04
2480	12.26	-2.09
2490	11.87	-2.35
2500	11.81	-2.59

UL Verification Services (Guangzhou) Co., Ltd, Song Shan Lake Branch

*This report shall not be reproduced except in full, without the written approval of UL Verification Services (Guangzhou) Co., Ltd,
Song Shan Lake Branch.*

Polarization Pattern Photos

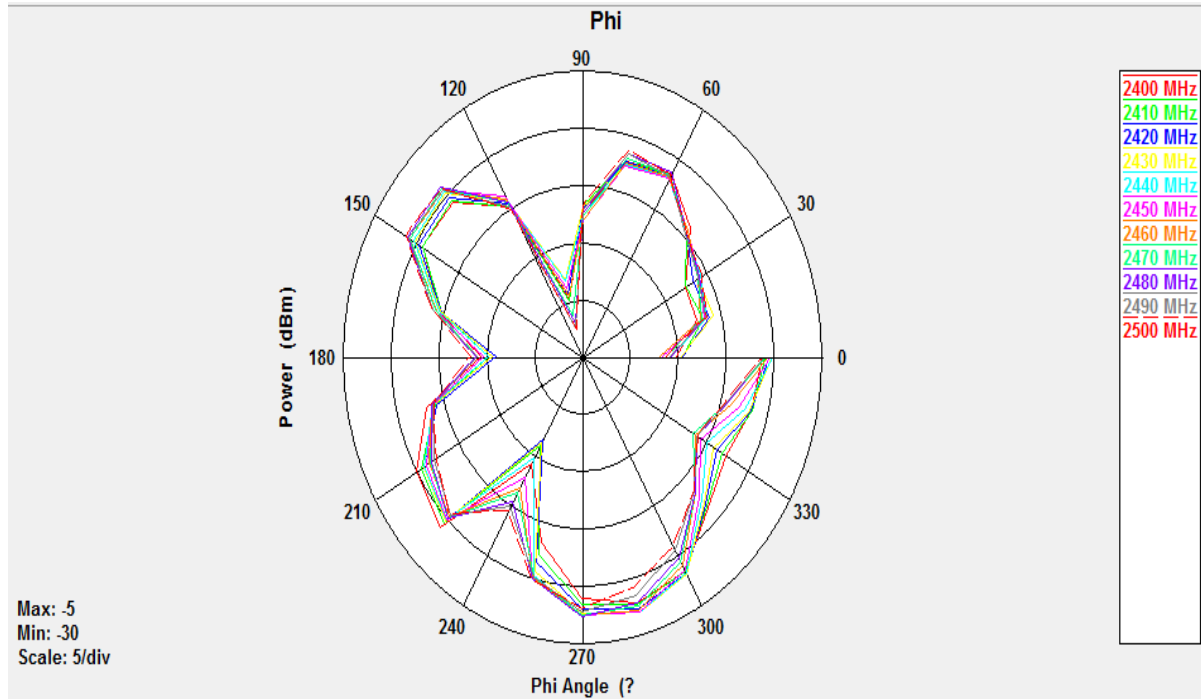
Theta Polarization(Theta Angle=90°)



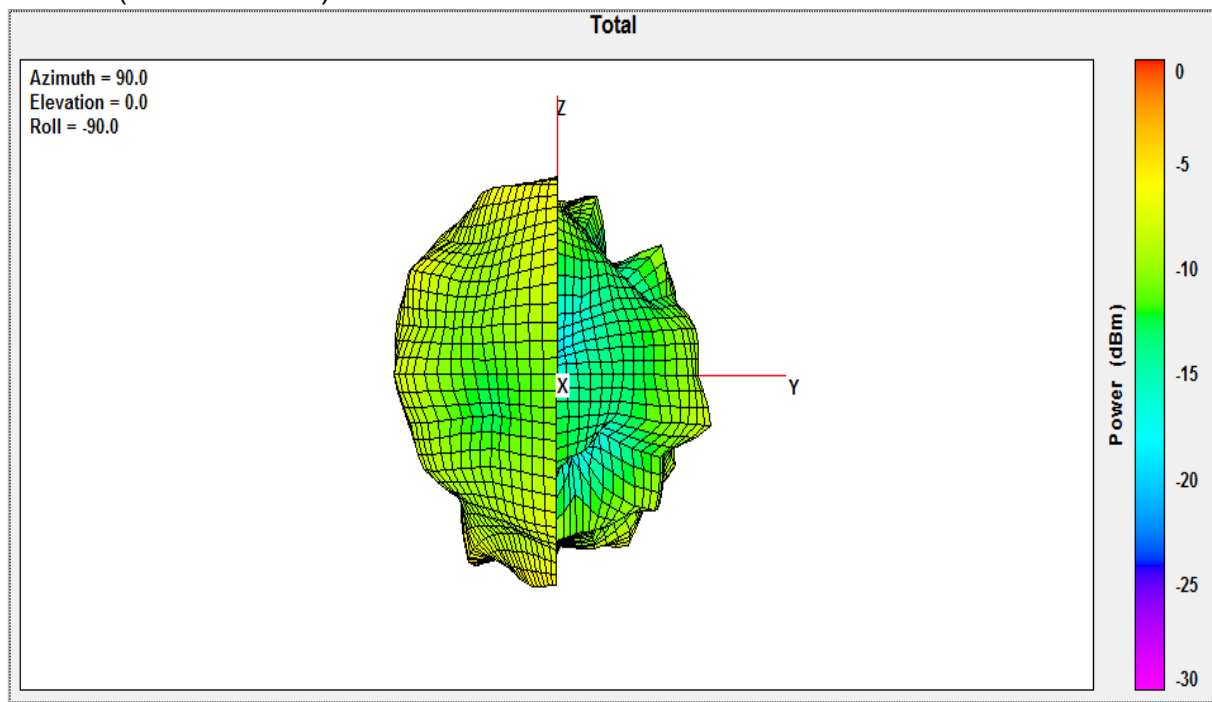
UL Verification Services (Guangzhou) Co., Ltd, Song Shan Lake Branch

This report shall not be reproduced except in full, without the written approval of UL Verification Services (Guangzhou) Co., Ltd, Song Shan Lake Branch.

Phi Polarization(Theta Angle=90°)

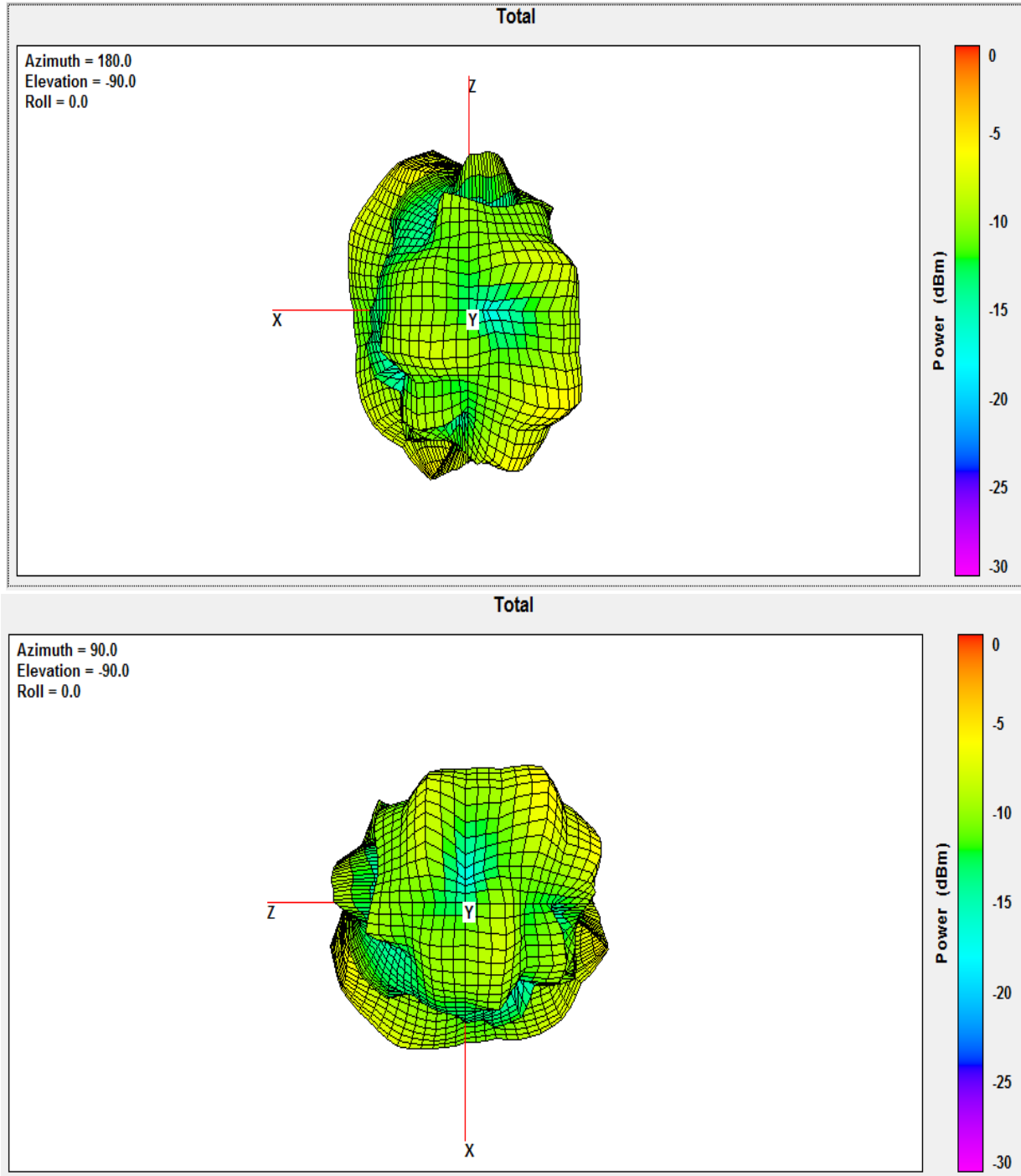


Total 3D Plot(Fre.2440MHz)



UL Verification Services (Guangzhou) Co., Ltd, Song Shan Lake Branch

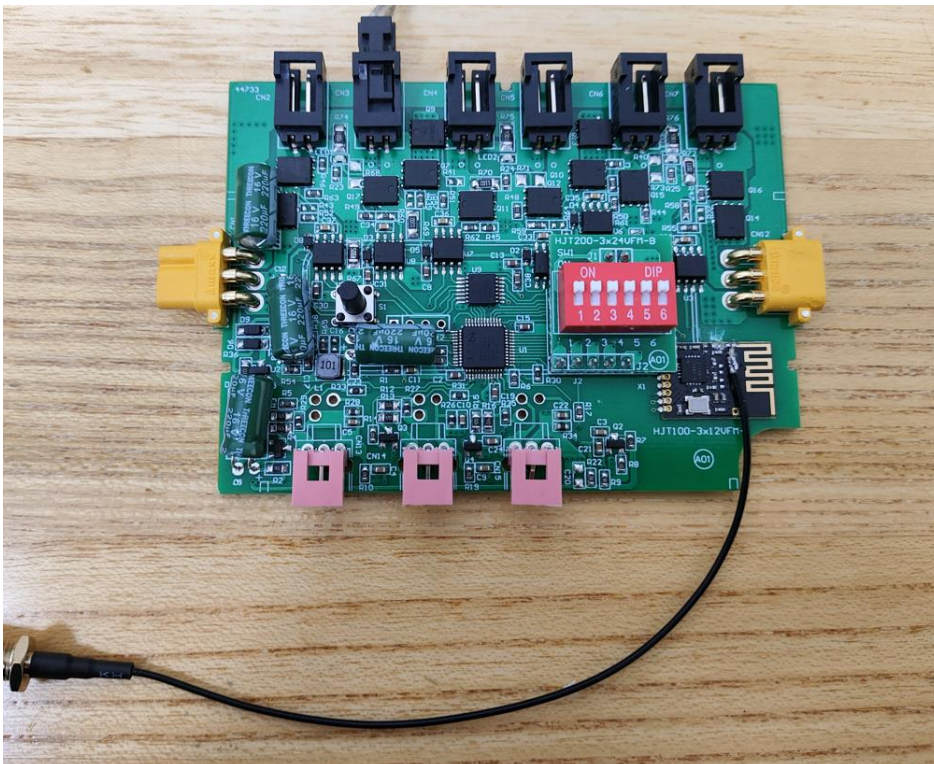
This report shall not be reproduced except in full, without the written approval of UL Verification Services (Guangzhou) Co., Ltd, Song Shan Lake Branch.



UL Verification Services (Guangzhou) Co., Ltd, Song Shan Lake Branch

*This report shall not be reproduced except in full, without the written approval of UL Verification Services (Guangzhou) Co., Ltd,
Song Shan Lake Branch.*

6 Photo



UL Verification Services (Guangzhou) Co., Ltd, Song Shan Lake Branch

*This report shall not be reproduced except in full, without the written approval of UL Verification Services (Guangzhou) Co., Ltd,
Song Shan Lake Branch.*

END OF REPORT

UL Verification Services (Guangzhou) Co., Ltd, Song Shan Lake Branch

*This report shall not be reproduced except in full, without the written approval of UL Verification Services (Guangzhou) Co., Ltd,
Song Shan Lake Branch.*