

PRO 15

Portable Trolley Speaker

Instruction Manual



Please read this manual carefully before operating the speaker.
Please store this manual with you for future reference.



INTRODUCTION

Congratulations on your purchase!

We encourage you to take a few minutes to read this manual which describes the product and includes step-by-step instructions to help you to enjoy the product features. Read and understand all the safety instructions before using your product. If you have any questions about the product, its installation or its operation, please contact your retailer or qualified service personal.

IMPORTANT SAFETY INSTRUCTIONS

1. Read all warnings
2. Follow all instructions.
3. The apparatus shall not be exposed to dripping or splashing. Do not place any objects filled with liquids such as vase on the apparatus.
4. Do not block any ventilation openings. A minimum distance of 30cm around the apparatus must be maintained.
5. Do not install this apparatus near any heat sources such as radiators, heat registers, stoves or other apparatus (including amplifiers) that produce heat.
6. No naked flame sources, such as lighted candles should be place on the apparatus.
7. Protect the power cord from being walked on or pinched, particularly at plugs, convenience receptacles and the point where they exit from the apparatus.
8. Use only attachments and accessories specified by the manufacturer.
9. Unplug this apparatus during lightning storms or when unused for long duration.

CAUTION	
RISK OF ELECTRIC SHOCK.DO NOT OPEN.	
	THE LIGHTNING FLASH WITH AN ARROWHEAD SYMBOL,WITHIN AN EQUILATERAL TRIANGLE, IS INTENDED TO ALERT THE USER TO THE PRESENCE OF UNINSULATED "DANGEROUS VOLTAGE" WITHIN THE PRODUCT'S ENCLOSURE THAT MAY BE OF SUFFICIENT MAGNITUDE TO CONSTITUTE A RISK OF ELECTRIC SHOCK TO PERSONS.
	THE EXCLAMATION POINT WITHIN AN EQUILATERAL TRIANGLE IS INTENDED TO ALERT THE USER TO THE PRESENCE OF IMPORTANT OPERATING AND MAINTENANCE(SERVICING) INSTRUCTIONS IN THE LITERATURE ACCOMPANYING THE PRODUCT.
WARNING TO REDUCE THE RISK OF FIRE OR ELECTRIC SHOCK, DO NOT EXPOSE THIS APPARATUS TO RAIN OR MOISTURE	

FCC warning:

This device complies with part 15 of the FCC Rules. Operation is subject to the following two conditions:(1) this device may not cause harmful interference, and (2) this device must accept any interference received, including interference that may cause undesired operation.

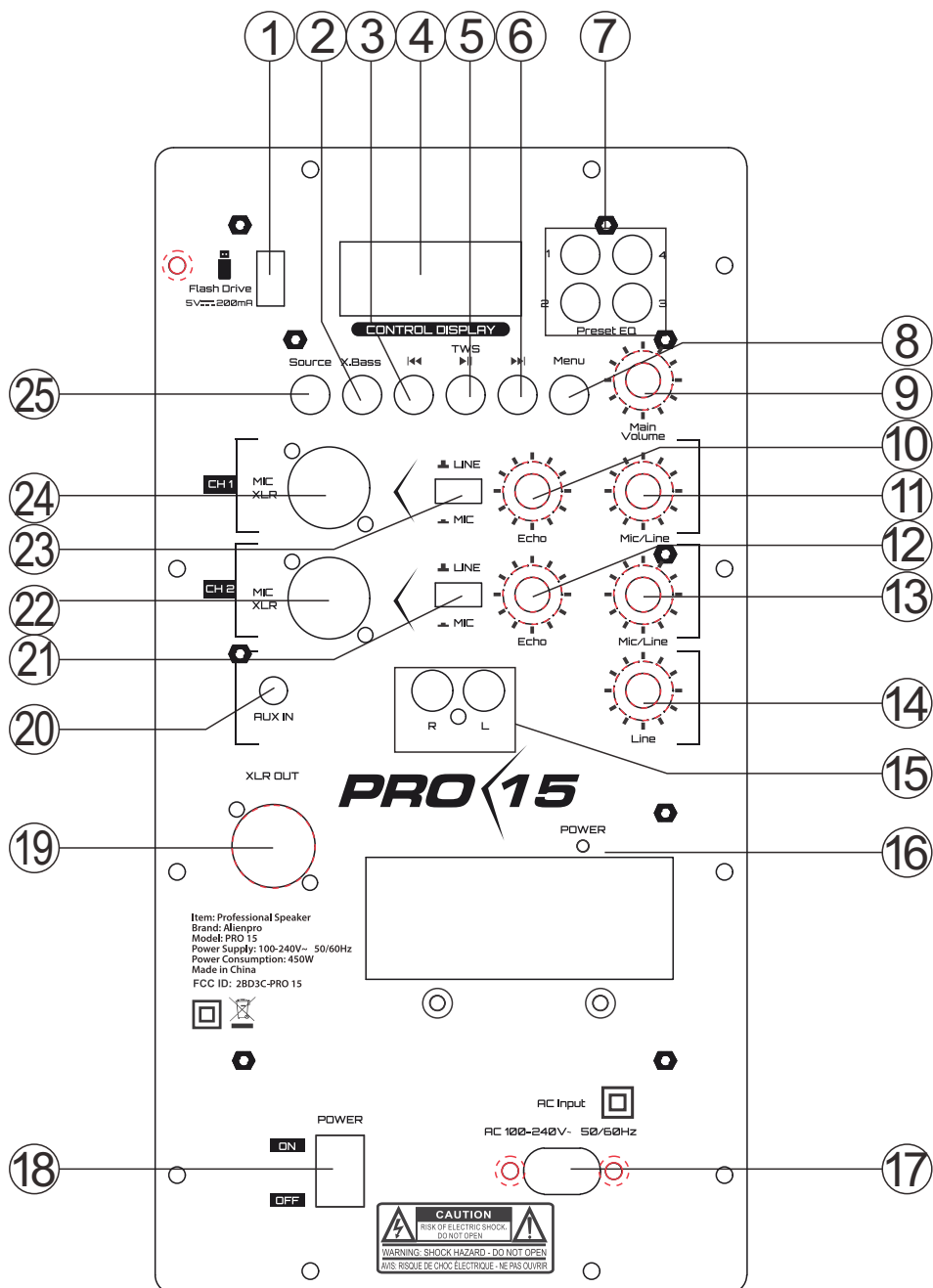
Any changes or modifications not expressly approved by the party responsible for compliance could void the user's authority to operate the equipment.

NOTE: This equipment has been tested and found to comply with the limits for a Class B digital device, pursuant to Part 15 of the FCC Rules. These limits are designed to provide reasonable protection against harmful interference in a residential installation. This equipment generates, uses and can radiate radio frequency energy and, if not installed and used in accordance with the instructions, may cause harmful interference to radio communications. However, there is no guarantee that interference will not occur in a particular installation.





If this equipment does cause harmful interference to radio or television reception,which can be determined by turning the equipment off and on, the user is encouraged to try to correct the interference by one or more of the following measures:

- Reorient or relocate the receiving antenna.
- Increase the separation between the equipment and receiver.
- Connect the equipment into an outlet on a circuit different from that to which the receiver is connected.
- Consult the dealer or an experienced radio/TV technician for help.

To maintain compliance with FCC's RF Exposure guidelines, This equipment should be installed and operated with minimum distance between 20cm the radiator your body: Use only the supplied antenna.



1. **USB:** Insert the USB drive into USB port to playback your stored music. Supports file format up to 32GB.
Important: The USB port is intended only for data transfer only, it does not support USB charging. The use of USB extension cords is not recommended.
2. **X.BASS:** Press to turn on/off X.BASS function.
3. **Prev ◀◀:** In USB/BT mode, press this key to listen to the previous track on your playlist.
4. **LED Display:** Display speaker status.
5. **▶II/TWS:** Press to play/pause the music. Long press to enter TWS pairing mode to pair up with another PRO 15 speaker for stereo sound effect.
6. **NEXT ▶▶:** In USB/BT mode, press this key to listen to next track on your playlist.
7. **PRESET EQ:** There are 4 EQ effects available for selection, press 1,2,3,4 key to select your preference.
8. **MENU:** Press this key to select between Bass and Treble. Rotate the main volume knob to increase or decrease.
9. **MAIN VOLUME:** Rotate this knob to adjust media volume. This is the MAIN VOLUME control.
10. **ECHO:** Rotate this knob to adjust echo volume for the channel 1.
11. **MIC/LINE:** Rotate this knob to adjust mic/line-in volume connected to the channel 1.
12. **ECHO:** Rotate the knob to adjust echo volume for the channel 2.
13. **MIC/LINE:** Rotate this knob to adjust mic/line-in volume connected to the channel 2.
14. **LINE:** Rotate the knob to adjust the line-in volume.
15. **AUX:** Connect with RCA cable to your audio source.
16. **POWER:** Indicator light will illuminate when the speaker is switched on, and will be off when the speaker is switched off.
17. **AC input:** AC 100-240V~,50/60Hz.
18. **POWER SWITCH:** Press the power ON/OFF button to switch on/off the speaker.
19. **XLR OUT :** To connect to another speaker, use a XLR cable (not included) and plug the other end of the cable to the XLR IN on the additional speaker to share the music via cable.
20. **AUX IN:** Connect your external audio device with 3.5mm AUX-IN cable (not include).

- 21. **LINE/MIC:** Press the switch to  for selecting microphone or set it to LINE-IN  connected as the channel 2 source.
- 22. **XLR:** Plug wired microphone with XLR jack / 6.3mm jack or connect line-in audio signal as channel 2.
- 23. **LINE/MIC:** Press the switch to  for selecting microphone or set it to LINE-IN  connected as the channel 1 source.
- 24. **XLR:** Plug wired microphone with XLR jack / 6.3mm jack or connect line-in audio signal as channel 1.
- 25. **SOURCE:** Press to change the source between USB/BT.

TURNING THE UNIT ON/OFF

Press the power ON/OFF switch on the control board. When the unit is powered on LED will be displayed.


SELECTING MODE

To change function modes, press SOURCE button select between USB/BT modes.

ADJUSTING THE VOLUME

Rotate the MEDIA switch to increase/decrease volume to your desired level.

MICROPHONE CONNECTION

Plug in wired microphone with XLR Jack or 6.3mm Jack on the Control panel in Channel 1 or Channel 2 and press the switch to position  to play the microphone while listening to music.

LINE-IN (AUX INPUT)

With 3.5mm AUX-IN cable connect the speaker with your Smartphone/MP3 Player/PC/Laptop or other audio source.


USB PLAYBACK

Press SOURCE button to select “USB” mode and insert USB stick, speaker will read and play the music stored on the USB drive.

PAIRING WITH YOUR SMARTPHONE

Press SOURCE button to select “BT” mode and speaker will enter pairing mode. On your smartphone or audio device search for “PRO 15” and connect. Enter “0000” password if required. Once the pairing is completed speaker will start playing the music from your device.

TWS (TRUE WIRELESS SETERO) MODE

Power on two “PRO 15” speakers and press SOURCE button to enter “BT” mode on both Speakers. Make sure both speakers are not paired with any device. Press  TWS button for 2 seconds and “T ON” will be displayed on the screen, speakers will pair up with each other automatically. There will be a voice prompt to confirm that connection is successful and speaker display will show “bL”. Now pair with your smartphone or audio device and upon successful connection music will be played on both the speakers simultaneously.

To disconnect TWS connection press “TWS” button on either speaker for 2 seconds “T OF” will be displayed on screen confirming that the TWS connection is disconnected.

GENERAL

Power Source -----AC100-240V~, 50/60Hz

Unit Dimension ----- W530xD390xH770mm

AUDIO SECTION

Speaker Size -----15" + 1"

Power Output ----- 450 Watts

Frequency Response -----30Hz-20KHz

ACCESSORIES

AC Power Cable x 1

User's Manual x 1

NOTE: Specifications are subject to change for continuous improvement without prior notice.