

承認書

APPROVAL

客 户：

品 名 规 格
DESCRIPTION:

WIFI2.4G/5G-羽毛天线-SMA 公头公针

料 号
PART NO.:

客 户 料 号
CUS PART NO.:

日 期
D A T E:

2025. 5. 20

工 程 ENGINEERING DEPARTMENT	品 保 Q C DEPARTMENT	业 务 SALES DEPARTMENT

客户承认签章

工 程 ENGINEERING DEPARTMENT	品 保 Q C DEPARTMENT	采 购 PURCHASING DEPARTMENT

联系电话：

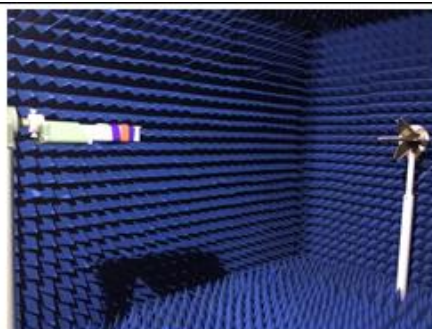
※ 承认书一式五份，惠蒙贵司承认签章

※ Approval in duplicate, please signed by your company.

1. Test items and equipment

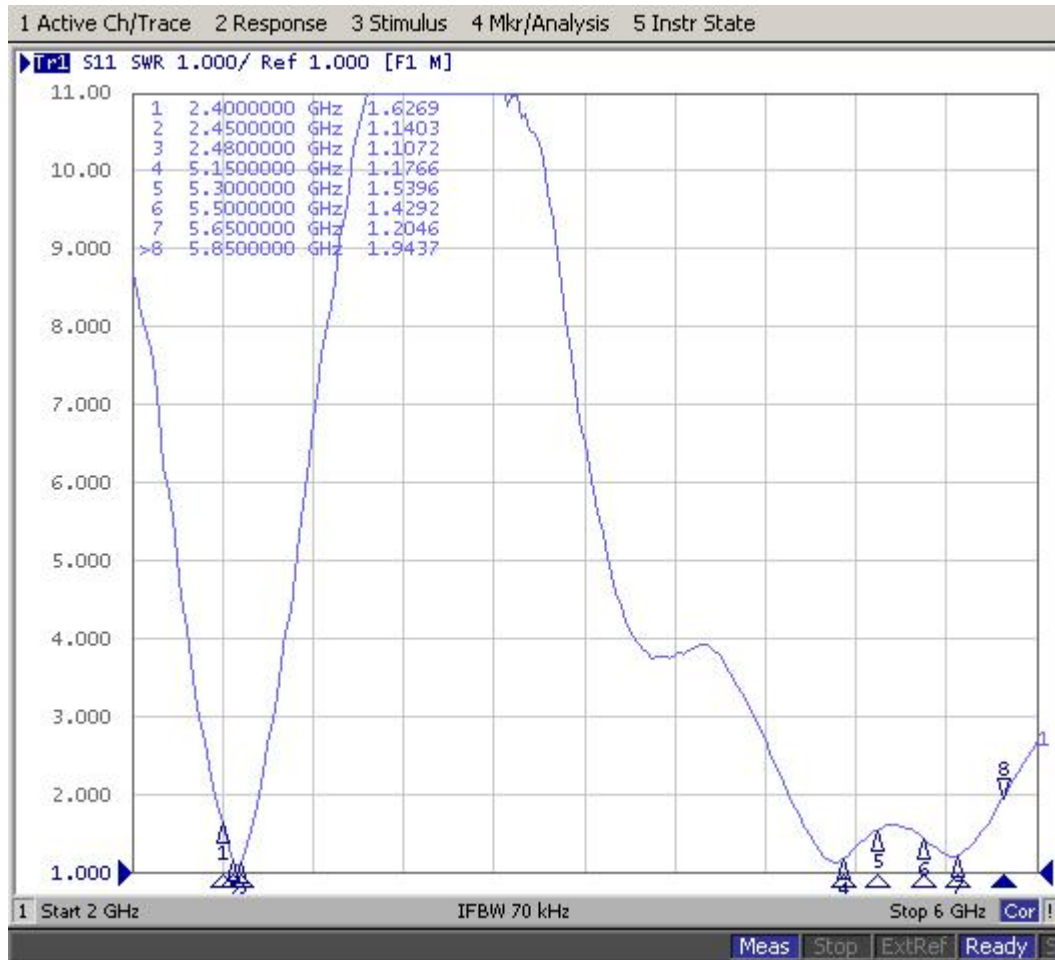
1.测试项目与设备

	测试项目	设备
1. S11 参数 (S-parameter)	1. 回波损耗 (Return Loss) 2. 电压驻波比 (VSWR)	网络分析仪: Agilent E5071B HP 8753D
2. 有源测试 (Active)	1. 发射功率 (TRP) 2. 接收灵敏度 (TIS)	1. 暗室: ETS 7x4x3 m (3D) Chamber ETS 5x3x3 m (3D) Chamber 2. 综合测试仪: Agilent 8960 E5515B ×2 StarPoint SP6011
3. 无源测试 (Passive)	1. 天线增益 (Gain) 2. 天线效率 (Efficiency)	1. 暗室: ETS 7x4x3 m (3D) Chamber ETS 5x3x3 m (3D) Chamber 2. 网络分析仪: Agilent E5071B HP 8753D



2.WIFI 天线性能

2.WIFI antenna performance SWR

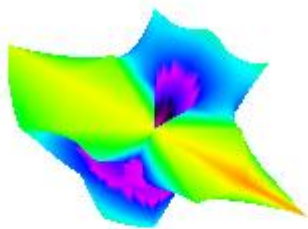


3. Antenna Efficiency and Gain

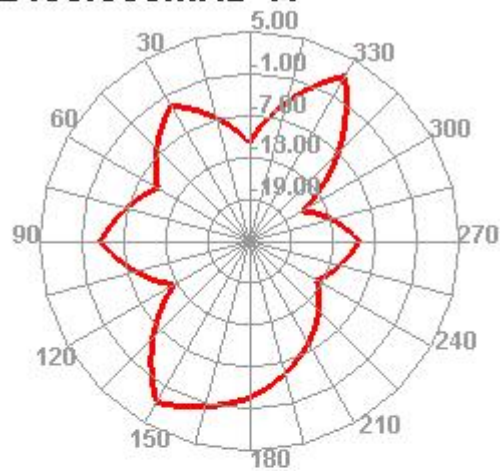
3. 天线效率与增益

Passive Test For WIFI2.4		
Freq (MHz)	Effi (%)	Gain (dBi)
2400	54.38	4.56
2410	52.36	4.32
2420	47.17	3.91
2430	46.43	3.88
2440	49.02	4.19
2450	52.49	4.51
2460	49.92	4.4
2470	53.16	4.73
2480	54.11	4.73
2490	57.28	4.92
2500	58.69	5.1

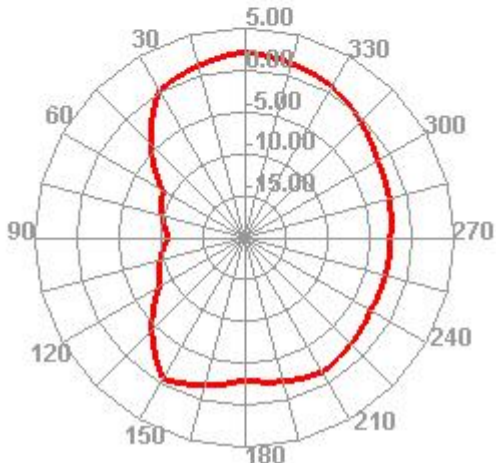
2400.000MHz



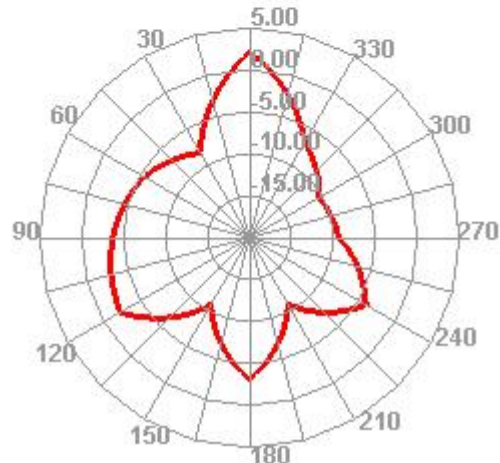
2400.000MHz H



2400.000MHz E1

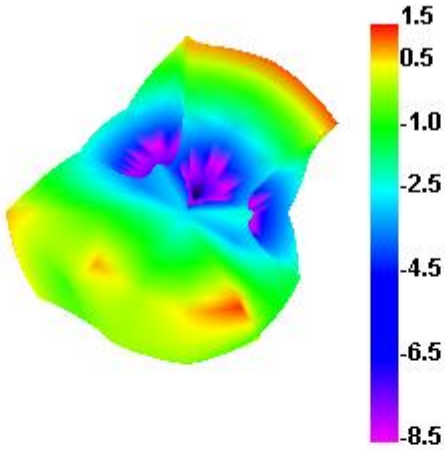


2400.000MHz E2

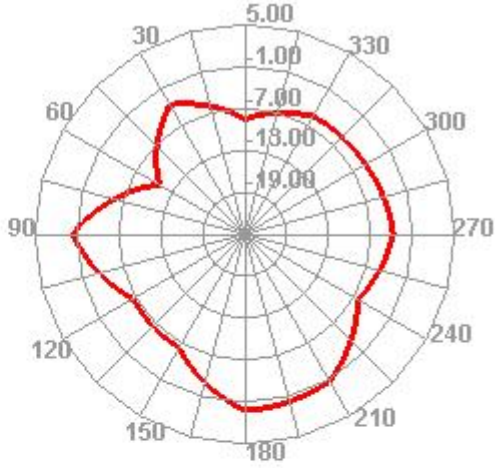


Passive Test For WIFI5.8		
Freq (MHz)	Effi (%)	Gain (dBi)
5150	50.28	1.53
5250	40.85	0.47
5350	56.68	2.03
5450	60.8	1.93
5550	61.46	1.29
5650	69.64	1.91
5750	73.01	2.76
5850	71.29	2.68

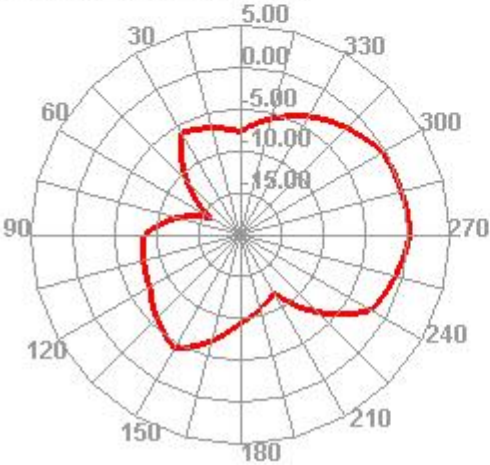
5150.000MHz



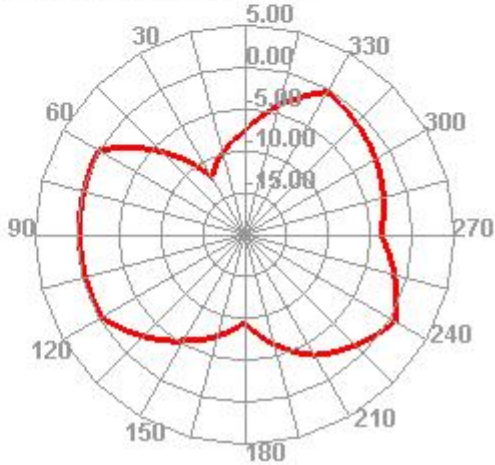
5150.000MHz H



5150.000MHz E1

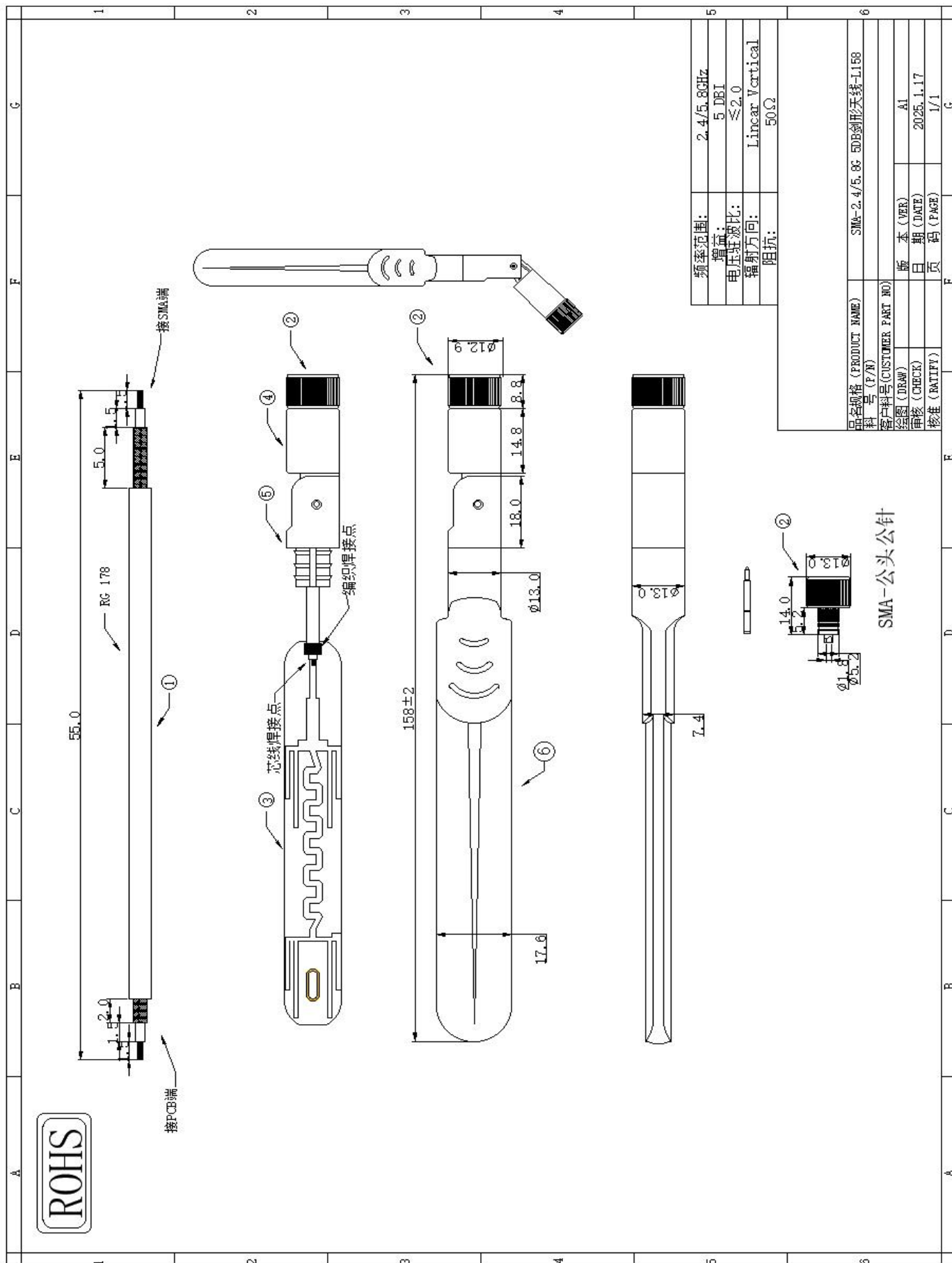


5150.000MHz E2



4. Antenna structure diagram:

4. 天线结构图:



Electrical technical parameters

电器技术参数

电性能指标		Electrical Specifications	
频率范围	2400~2500/5000~5800MHz	Frequency Range	2400~2500/5000~5800MHz
电压驻波比	≤2.0	VSWR	≤2.0
输入阻抗	50 Ω	Input Impedance	50 Ω
增益	5DBI	Gain	5DBI
辐射方向	全向	Radiation direction	omnidirectional
机械指标		Mechanical Specifications	
线材颜色	黑色	Antenna Color	Black
接口形式	SMA	Input connector	SMA
天线长度	158MM	Cable length	158MM
工作温度	-40℃~+85℃	Working Temperature	-40℃~+85℃
工作湿度	20~80%	Working Humidity	20~80%