

SURDY®

Automatic Pet Feeder-WiFi Control 3L

Model: SD-AD30

Manufacturer: Shenzhen Huachengjie Optical Technology Co.,Ltd.

Address: 404B,Building G2,TCL International E City,Shuguang Community,Xili Street,Nanshan District,Shenzhen

Made in China



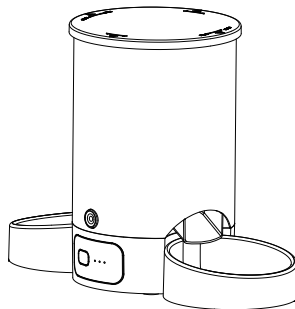
RoHS

This device complies with Part 15 of the FCC Rules. Operation is subject to the following two conditions: (1) this device may not cause harmful interference, and (2) this device must accept any interference received, including interference that may cause undesired operation.

SURDY®

USER MANUAL

Automatic Pet Feeder
WiFi Control 3L



! Please read this manual before using the product and keep it for future reference.

CONTENTS

English

01 – IN THE BOX

02 – PRODUCT OVERVIEW

04 – GETTING STARTED

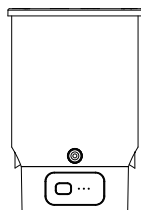
07 – APP CONTROL

15 – SPECIFICATIONS

15 – NOTICE

17 – WARRANTY

IN THE BOX



Automatic Pet Feeder

X1



Bowl Tray

X2



5V/1A Power Adapter

X1



Stainless Steel Bowl

X2



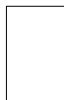
Desiccant Bag

X1



Type-C Power Cable

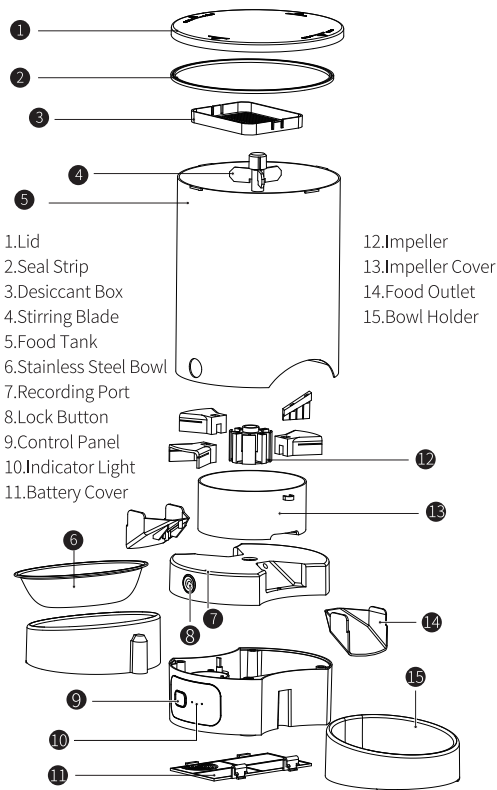
X1

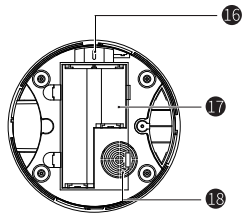


User Manual

X1

PRODUCT OVERVIEW



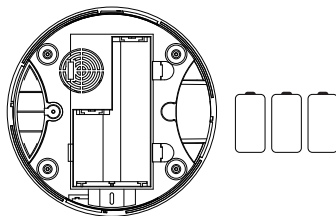


- 16.Power Outlet
17.Battery Compartment
18.Speaker

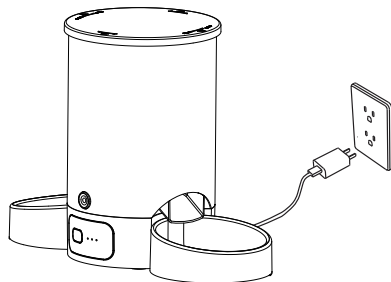
Indicator Type	Steady	Flashing
Red	/	The device is connectin Wi-Fi
Yellow	Network configuration mode	/
Blue	Wi-Fi is connected	/

GETTING STARTED

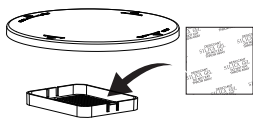
- ① Install three D alkaline batteries into the battery compartment in case of a power outage.



- ② Connect the feeder to a wall outlet with the power adapter and power cable, and it automatically turns on.

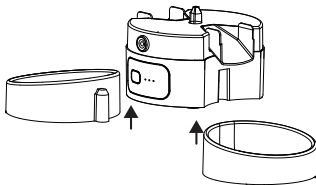


- ③ Place the desiccant bag in the desiccant bag holder under the lid.

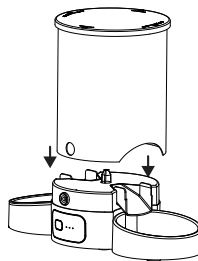


* Desiccant bag should be replaced every 15 days. Do not drop it into the grain bin, and do not use if damaged.

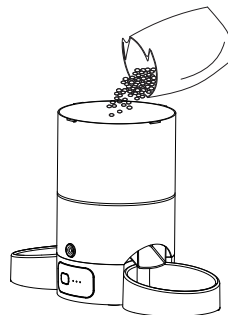
- ④ Install the stainless steel bowl and bowl tray.



- ⑤ Align the locking latch on the grain bin with the locking buttons on the base, then simultaneously press both locking buttons to secure the grain bin in place.



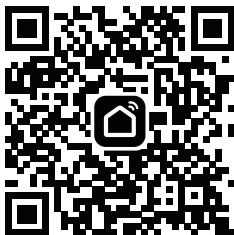
- ⑥ Add dry pet food to the food tank.



APP CONTROL

Install the app log in

1. Scan the QR code below or search "Smart Life-Smart Living" in the App Store or Google Play to download the app.
2. Sign up and log into your account.



Network,router system requirements

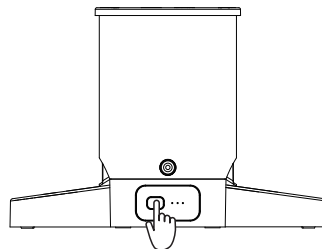
The feeder ONLY supports 2.4G Wi-Fi.
Keep the feeder close to your router for a better Wi-Fi connection. The ideal range is within 6m(19.7ft) without obstacles and walls.
Supports iPhones running iOS 12.0 or later and Android smartphones running Android 5.0 or later.

1. Automatically add the device

- ① Turn on the 2.4G WIFI, Bluetooth and location services on your phone before adding a device.



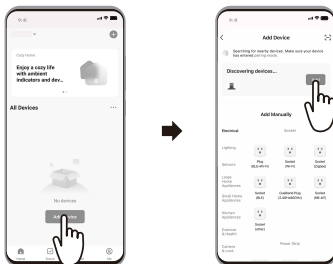
- ② Press and hold the device button for 5 seconds. The indicator light will flash red, and you will hear a beep, indicating that it has entered networking mode. Once successfully connected, the indicator light will stay blue.



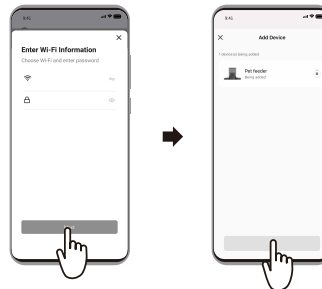
- ③ Open the app and sign up and log into your account.



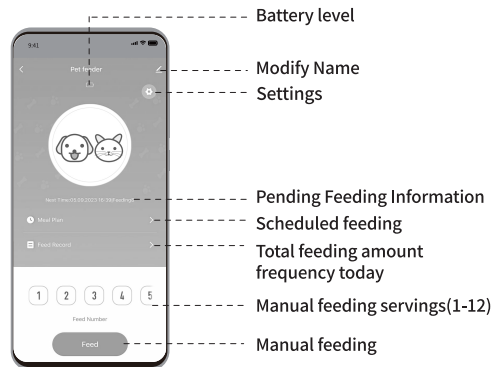
- ④ The app will automatically search nearby devices. Tap the device you want to add and follow the on-screen instructions.



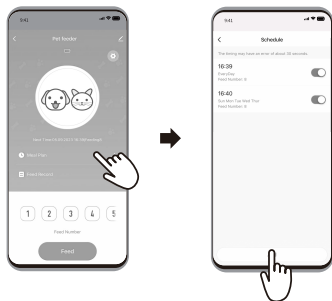
- ⑤ Follow the on-screen instructions to enter the correct Wi-Fi password (this step will be skipped if Wi-Fi has been previously connected). Wait for a successful connection. If you encounter binding failure, you can retry the binding process.



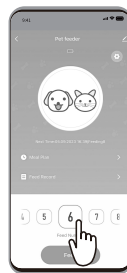
- ⑥ Device controls & settings



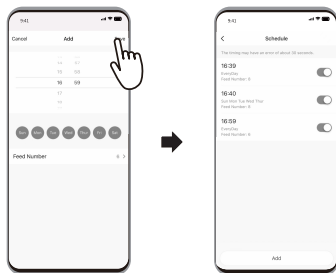
- ⑦ Click on Feeding Schedule, then click Add.



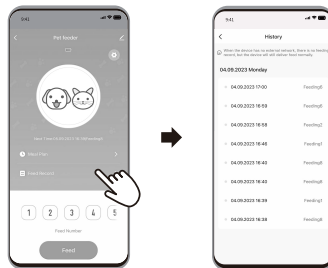
- ⑧ Click on Manual Feeding, then click on Feeding Portions, you can manually add extra food.



According to your pet's eating habits, you can set the desired feeding time and portion.

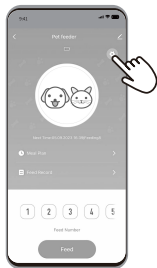


- ⑨ Click on Feeding Records to view the feeding history.

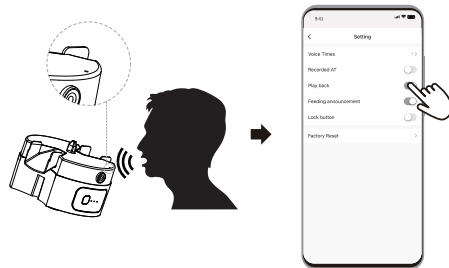


2. Voice Settings

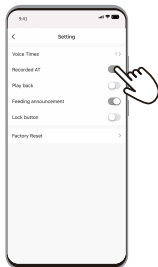
- ① Once the device is connected to the network, open the app. click on the settings icon in the upper right corner, and proceed with the voice recording.



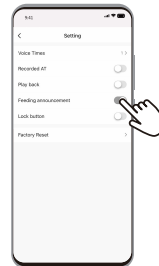
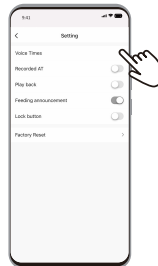
- ③ While recording, try to position it close to the recording hole above the control panel. After recording, click on the Play back to play the recording.



- ② Click on the recording icon, the icon turns blue, indicating that recording has started.



- ④ Number of Plays: The recording will be played several times during feeding, every 10 seconds, up to a maximum of 6 times.
Feeding Announcement Voice: When enabled, there will be a voice announcement during feeding; when disabled, there won't be any voice announcement during feeding.



SPECIFICATIONS

Product name:	Smart pet feeder
Model:	SD-AD30
Capacity:	3L
Working power:	5V \approx 1A/2A
Connection:	Wi-Fi (2.4GHz)
Distance restrictions:	No distance limit
Products size:	395X183X275mm
Product net weight:	1.6Kg
Battery:	3 x D-size alkaline batteries (Not included))
Product material:	ABS/304 stainless steel bowl

NOTICE

- Please be aware that the feeder only supports 2.4GHz Wi-Fi networks with password protection.
- Recommended to use pet food with a diameter of 5-15mm, any shape is acceptable. Do not place wet food or other types of food.
- Please place the device correctly to prevent pets from knocking it over; it is recommended to place it in a corner or against a wall.
- Regularly replace the desiccant in the moisture-proof box and other items with moisture-proof functions if they are stored; otherwise, no need to replace.
- Regularly check and ensure that the grain bin is in a dry and sealed state. In case of problems such as damp or spoiled pet food, deal with it promptly.
- Regularly clean the feeding bowl to prevent the growth of bacteria. If cleaning is needed, wipe the feeding bowl dry before putting it back in the bowl holder.
- Do not put substances other than pet food in the grain bin to avoid abnormal device operation, food spoilage, and harm to pet health.
- The product's power cord should be hidden as much as possible to prevent pets from chewing or scratching it, causing damage.
- If the feeder is without power for a long time, you may need to reset the time or feeding schedule after reconnecting the power.
- This device is not recommended for use with young pets within three months.
- Children should not use it alone.

- The feeder must be used with a standard power socket and should be kept separate from other electrical appliances.
 - Ensure that the voltage used matches the relevant power parameters indicated for the feeder.
 - Avoid forcefully pulling the power cord; if the power cord or plug is damaged, stop using it immediately.
 - Avoid subjecting the feeder to strong impacts.
- *Please carefully read the warnings and precautions; failure to comply will be at your own risk.

WARRANTY

- 12-month warranty.
- For guidance on product use, please contact our customer service team via email:

surdystore@hotmail.com

FCC Statement

This equipment has been tested and found to comply with the limits for a Class B digital device, pursuant to part 15 of the FCC Rules. These limits are designed to provide reasonable protection against harmful interference in a residential installation. This equipment generates, uses and can radiate radio frequency energy and, if not installed and used in accordance with the instructions, may cause harmful interference to radio communications. However, there is no guarantee that interference will not occur in a particular installation. If this equipment does cause harmful interference to radio or television reception, which can be determined by turning the equipment off and on, the user is encouraged to try to correct the interference by one or more of the following measures:

- Reorient or relocate the receiving antenna.
 - Increase the separation between the equipment and receiver.
 - Connect the equipment into an outlet on a circuit different from that to which the receiver is connected.
 - Consult the dealer or an experienced radio/TV technician for help.
- This device complies with part 15 of the FCC Rules. Operation is subject to the following two conditions: (1) This device may not cause harmful interference, and (2) this device must accept any interference received, including interference that may cause undesired operation.

Caution

Any changes or modifications not expressly approved by the party responsible for compliance could void the user's authority to operate the equipment.

FCC Radiation Exposure Statement

This equipment must be installed and operated in accordance with provided instructions and the antenna(s) used for this transmitter must be installed to provide a separation distance of at least 20 cm from all persons and must not be co-located or operating in conjunction with any other antenna or transmitter. End-users and installers must be provided with antenna installation instructions and transmitter operating conditions for satisfying RF exposure com