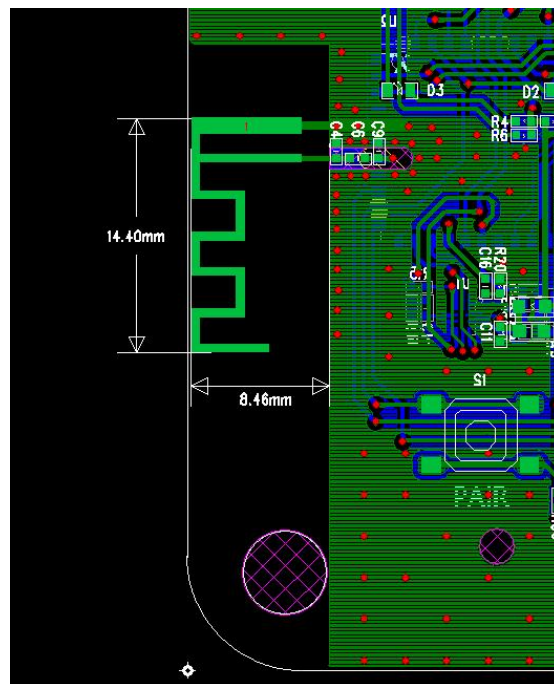


1. Electrical Characteristics

Item	Specification
Model	BT200
Manufacturer	ShenzhenTianyilianTechnology Co., LTD Room 203 and 205, West Side of Building E3, Eastern Industrial Zone, OCT, Shahe Sub-district, Nanshan District, Shenzhen City
Type	PCB Meander Line Antenna
Central frequency	2.441 GHz
Bandwidth	78 MHz (Typical value)
Gain	1dBi
Polarization	Linear
VSWR	2 max.
Azimuth Bandwith	Omni-directional
Impedance	50Ω
Rated Power (max.)	4dBm
Maximum Input Power	10dBm
Operation Temperature	-40 C ~ +85 C

2. The suggestion of matching circuit

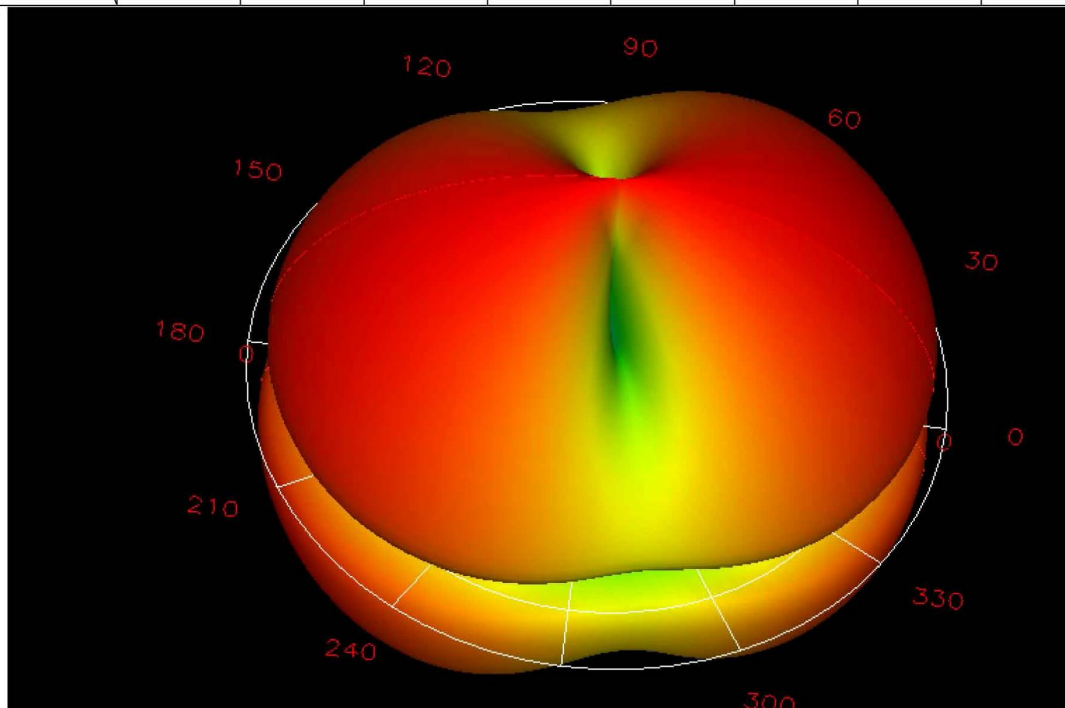


3. Antenna Radiation Pattern

Radiation pattern@2.400GHZ

Total Average Gain:-0.475dbi

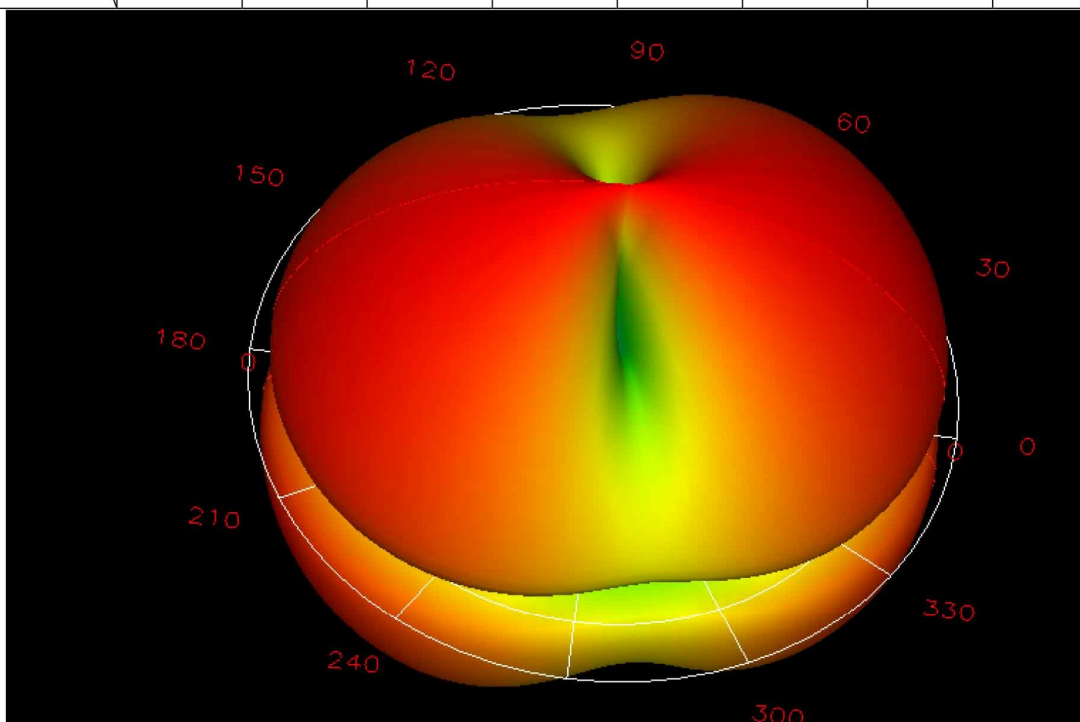
Phi	0	45	90	135	180	235	270	315
Gain	-0.1	-0.3	-0.8	-0.5	-0.2	-0.6	-0.8	-0.5



Radiation pattern@2.441GHZ

Total Average Gain:-0.275dbi

Phi	0	45	90	135	180	235	270	315
Gain	0	-0.1	-0.3	-0.6	-0.1	-0.2	-0.6	-0.4



Radiation pattern@2.500GHZ

Total Average Gain :0.225dbi

Phi	0	45	90	135	180	235	270	315
Gain	0	-0.1	-0.2	0.68	0	1.0	0.6	-0.2

