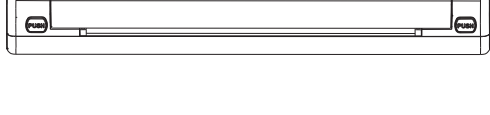


Quick Start Guide

SP20 Portable Printer



Notes before use:

1. Open the app "Phomemo", connect you mobile phone with the printer via Bluetooth.
2. Connection between PC and the printer requires USB wire, or the printer cannot be detected.
3. The thermal printer is applicable to Thermal paper only, non-thermal paper doesn't work on the printer.

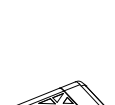
01. Package Contents

Printer*1

Data Cable *1

Flannel Bag*1

Quick Start Guide*1



02. Printer Components

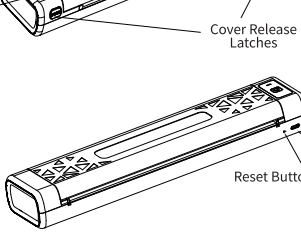
Power Button

Power Indicato

Cover Release Latches

Reset Button

Power Socket



03. Indicator Light Guide

Name	Status	Description
Power Indicator	Lit (Red)	Out of paper/ Cover is open/ Overheat
	Blinking (Red)	Low power
	Fast blinking (Red)	Normal
	Slow blinking (Green)	Charging while powered on
	Slow blinking (Green)	Charging while powered off

04. Button Function

(Power) Button Function	Operation
Turn on the printer	Press and hold the button for around 3 seconds until the power indicator light turns on.
Print QR code	Double-press the button to print QR code. You can scan the QR code using the App on the phone and connect to the printer.
Turn off the printer	Press and hold the button for around 3 seconds until the power indicator light turns off.

05. Precautions

- ① Please use 5V=2A input for charging, and it is recommended to use mobile phone power adapter for charging.
- ② Please connect the USB cable to the power adapter before charging, Please gently insert or unplug the charging cable when charging, to prevent excessive force from damaging the port.
- ③ After the charging is completed, please unplug the charging cable in time.
- ④ In order to avoid danger, do not use or charge in the environment of high temperature, high humidity, heavy smoke and dust, such as in bathroom, steam room, near to open flame, etc.
- ⑤ Improper charging may cause damage to the print head.
- ⑥ Do not touch the print head to prevent scalding caused by overheating.
- ⑦ The tearing blade is sharp, please be careful to avoid touching it by mistake.
- ⑧ If the machine is malfunctioning, insert the reset hole to restart the machine.

Battery warning instructions

- * It is forbidden to disassemble, hit, squeeze the battery, or throw it into fire;
- * If severe swelling occurs, please do not reuse it;
- * Do not place in a high temperature environment, and it is strictly prohibited to use the battery after soaking in water;
- * There is a danger of explosion if the battery is replaced by the wrong type. Be sure to dispose of the used battery according to the instructions;
- * If consumers use a power adapter for power supply, they should purchase a power adapter that meets the requirements of corresponding safety standards or a power adapter with CCC certification.

06. Instruction Guide

6.1 Install App

Download the App

Please search for "Phomemo" on your phone's App market and download the App.

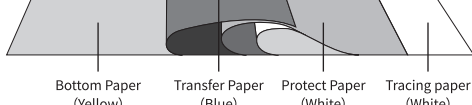
Google Play

App Store

Phomemo

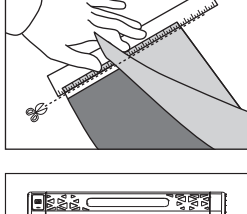
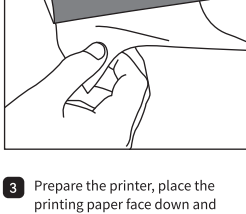
6.2 Install and change the printer's consumable

(1)Tattoo paper usage instructions

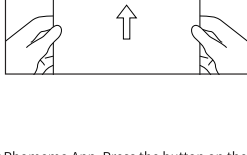


In order to ensure printing with high quality, please refer to the following steps:

- 1 Prepare the four-layer transfer paper, and take out the Protect Paper.
- 2 Remove the backing paper, and cut the backing paper horizontally along the bottom side of the top adhesive part. Note that the adhesive part of the paper should be kept intact.



- 3 Prepare the printer, place the printing paper face down and transfer paper face up, put them in the printer along the top, and start printing.



6.3 Connect the printer to the App

Method 1:

Turn on your phone's Bluetooth and open your Phomemo App. Press the button on the top right of your Phomemo App home page and select M08F from the list.

Note:

Android system needs to enable positioning and allow app to obtain relevant permissions.

Method 2:

Download the latest driver from the official website. Download the relevant driver according to the your operating system version and follow the instruction to install the driver.

Official website: <http://SP20.phomemo.com/>

Download

SP20 App in Google Play

SP20 App in APP Store

SP20 PC Driver For Windows

SP20 PC Driver For MAC



NOTE

If you wish to obtain more tutorials on how to install the driver, please open your Phomemo APP > Profile > Use Tutorial to obtain more guidance.

08. FCC Warning

This device complies with part 15 of the FCC Rules. Operation is subject to the following two conditions:(1) This device may not cause harmful interference, and (2) this device must accept any interference received, including interference that may cause undesired operation.

Any Changes or modifications not expressly approved by the party responsible for compliance could void the user's authority to operate the equipment.

This equipment has been tested and found to comply with the limits for a Class B digital device, pursuant to part 15 of the FCC Rules. These limits are designed to provide reasonable protection against harmful interference in a residential installation. This equipment

generates uses and can radiate radio frequency energy and, if not installed and used in accordance with the instructions, may cause harmful interference to radio communications.

However, there is no guarantee that interference will not occur in a particular installation. If this equipment does cause harmful interference to radio or television reception, which can be determined by turning the equipment off and on, the user is encouraged to try to correct the interference by one or more of the following measures:

- Reorient or relocate the receiving antenna.
- Increase the separation between the equipment and receiver.
- Connect the equipment into an outlet on a circuit different from that to which the receiver is connected.
- Consult the dealer or an experienced radio/TV technician for help.

The device has been evaluated to meet general RF exposure requirement. The device can be used in portable exposure condition without restriction.

09. IC Warning

IC Caution:

Radio Standards Specification RSS-Gen, issue 5- English:

This device contains licence-exempt transmitter(s)/receiver(s) that comply with Innovation, Science and Economic Development Canada's licence-exempt RSS(s). Operation is subject to the following two conditions:

This device may not cause interference.

This device must accept any interference, including interference that may cause undesired operation of the device.

RF exposure statement:

The device has been evaluated to meet general RF exposure requirement. The device can be used in portable exposure condition without restriction.

- French:

Cet appareil contient des émetteurs / récepteurs exemptés de licence conformes aux RSS (RSS) d'Innovation, Sciences et Développement économique Canada. Le fonctionnement est soumis aux deux conditions suivantes:

Cet appareil ne doit pas causer d'interférences.

Cet appareil doit accepter toutes les interférences, y compris celles susceptibles de provoquer un fonctionnement indésirable de l'appareil.

Déclaration d'exposition RF:

L'appareil a été évalué pour répondre aux exigences générales d'exposition aux RF. L'appareil peut être utilisé dans des conditions d'exposition portable sans restriction.

10. Warranty Card

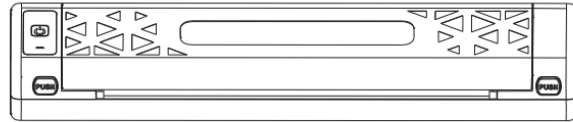
☐ Return ☐ Exchange ☐ Repair

User Info	Name:	Gender:	Phone:
	Address:		
Product Info	Purchase date:		
	Product order number:		
	Product Serial Number:		
Requirements of return /replacement /repair	Reason description:		
Maintenance records	Failure condition:		Maintenance person:
	Handling situation:		Delivery date:
	Maintenance ticket number:		Delivery date:

Quick Start Guide

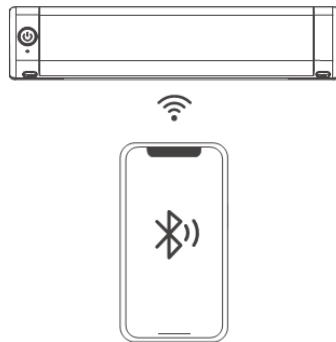
SP20

Portable Printer

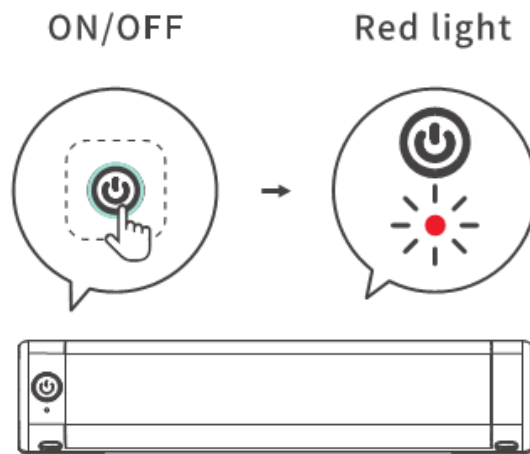


Step 1

Smartphone-controlled
スマートフォンと接続する
Smartphone-Steuerung

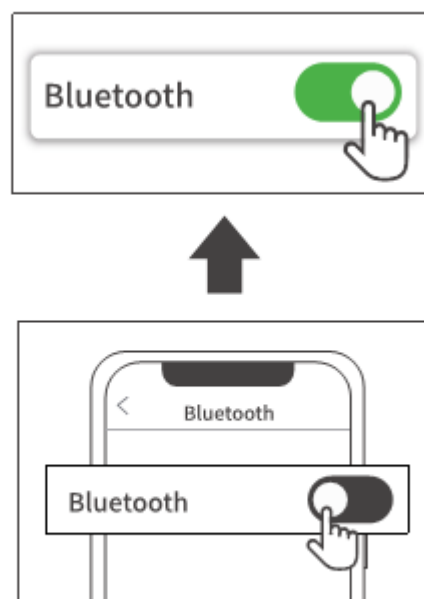


Step 2



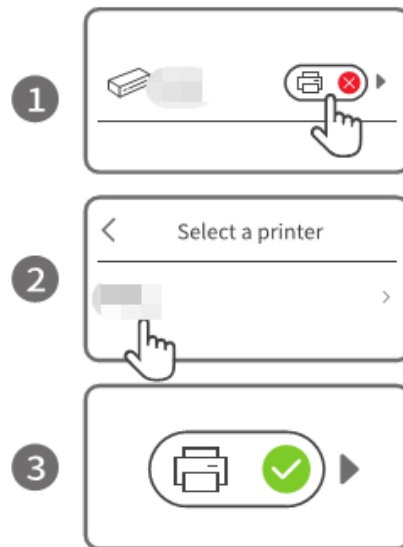
English Press and hold for 3s to turn on the printer.

Step 3



English Turn on Bluetooth from phone settings.

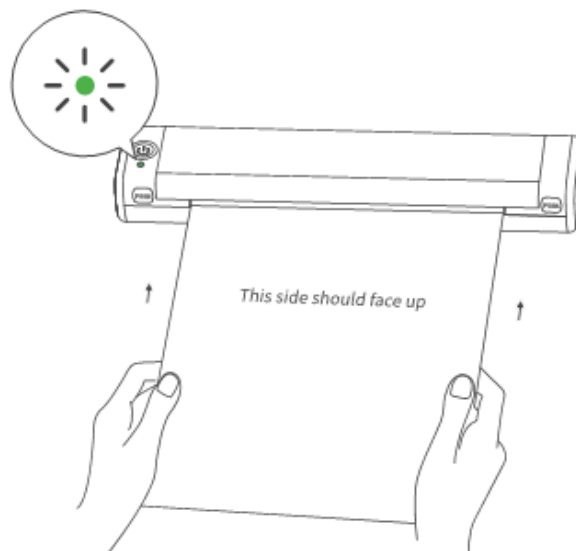
Step 4



English

Connect the printer via Bluetooth in the phomemo App.

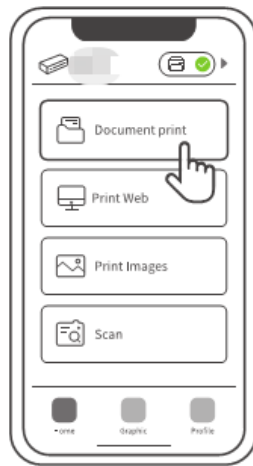
Step 5



English

Load the paper according to the prompt.

Step 6



English Select the file in the Phomemo App to print.