

KINGSLIM

M2P

DASH CAM

USER MANUAL

V1.0

Contents

Important Messages-----	04	>>
Getting Started-----	06	>>
1. Memory card-----	06	
2. First-time charging-----	06	
3. Recording-----	06	
4. Settings-----	07	
5. Setting date & time-----	07	
6. How to hide power cable inside your car's dash board?-----	07	
7. How to transfer videos to PC/MAC?-----	07	
8. Wifi-----	07	
9. Button operation instructions-----	08	
9.1 Preview interface-----	08	
9.2 Recording interface-----	09	
9.3 Playback interface-----	09	
10. Camera specifications-----	10	
11. What's in the box-----	11	
12. Camera overview-----	12	
13. Installation-----	13	
13.1 Insert the memory card.-----	13	
13.2 Insert the bracket into the bracket slot-----	13	
13.3 Install the dash cam on the windshield-----	14	
13.4 Install the rear camera-----	15	
14. Charging-----	17	
Start Recording-----	18	>>

1. Main interface -----	18
2. Memory card use -----	19
2.1 Installation -----	19
2.2 Removal -----	19
2.3 Formatting -----	20
3. Time zone setting -----	20
Playback -----	21
1. Dash cam playback -----	21
2. Kingslim APP playback -----	22
3. PC/MAC playback -----	26
System Settings -----	28
1. Resolution -----	28
2. Loop recording -----	28
3. Exposure -----	28
4. Record audio -----	28
5. Date stamp -----	29
6. GSensor -----	29
7. Parking monitor -----	29
8. Date/Time -----	29
9. 12-Hour time -----	29
10. LCD auto off -----	29
11. Beep sound -----	30
12. Language -----	30
13. Frequency -----	30
14. Format -----	30
15. Default setting -----	30

16. Version -----	30	
17. Time Zone Setting -----	30	
General FAQ-----	31	>>
Contact Us -----	33	>>

Important Messages

User agreement

By purchasing KINGSLIM Dash cam, it is assumed that by default you agree with precautions, user warnings and all the terms & conditions of warranty. If for any reason you do not agree with any of the terms mentioned in this manual, then you may return the product in its original packaging unused within its return window for a full refund.

Heads up:

- Do not expose this product to rain, moisture or water under any circumstances or it will result in external or internal damage.
- Do not put the unit in a damp environment. This device is not designed to be damp proof.
- Do not try to open the cover or try to repair it yourself. If the accessories for this device have any problem, please contact the seller for assistance. This camera is intended to use inside motor vehicle.
- Don't install it where it will block the driver's view of the road including mirrors or the deployment of airbags.
- Please read this manual very carefully before using the camera or installation and keep it safe for future reference. It will be helpful if you have any questions or encounter any operational problems.

Pre-cautions

Please read and understand all instructions before using this product. If any damage is caused by failure to follow the instructions, the warranty will be voided.

Warnings

Failure to comply with safety warnings and regulations can result in serious injury or death.

- Do not place the camera loose on top of the dashboard or in-front of the air bags.
- Do not mount the camera where it can be a distraction if it became loose and fall off the windshield while driving.



- Do not expose this device to an excessive heat, dust or use any chemical substance or cleaning solvent to clean this device. Instead use soft moist cloth for cleaning. Pay careful attention when cleaning the lens surface. Use a soft, moist cloth to clean the lens to avoid scratches which may compromise video quality.
- Removing the camera from the vehicle when not in use is recommended. This prevents likelihood of theft or exposure to excessive heat to prevent damage to unit. Do not operate or install the camera while driving, or attempt to change any setting etc.
- Pull off the road first and only do so when it is safe. Do not drop, puncture or disassemble this product.
- Do not use the charger if the cord is broken or damaged. Keep out of reach of children.
- Do not leave the camera in the direct sunlight for a long period of time or where temperature could go above 158°F (70°C).

Some countries or USA states prohibit drivers from mounting anything on windshield or prohibit mounting on certain area of the windshield. It is owner/operator's responsibility to mount or use of this device in compliance with local laws.

- The company is NOT responsible for the loss of any data or your content during operation or in any circumstance.

Getting Started

Please read and understand warnings & safety instructions before operating.

1. Memory card

Before turning ON the camera, please insert the memory card in Class10 U3 or above of the known brand at maximum of 256GB. Please format the memory card before use.

Note:

1. The memory card is a consumable item and has a certain service life (please refer to the description of the memory card of relevant brand for the specific product life).
2. If the machine prompts that it cannot be formatted, the card is wrong, or frequently prompts to format, please replace the card with a new one. To ensure better protection of your memory card and machine, please format it regularly within 2 months.

2. First-time charging

Now plug in to the power. The camera will turn on automatically as soon as it receives the power and then it will prompt you with the initial setup on the screen for the first-time use. Make sure to keep your camera plugging into the power all the time because the internal battery is ONLY for emergency recording during parking mode.

Note:

1. You can use your iPhone or Android phone's USB charger and USB cable to plug your dash cam into your 110V power outlet.
2. If you don't get the initial setup prompts for any reason, you can set the camera to factory default settings, then re-start the camera to start the initial setup again.

3. Recording

KINGSLIM 4K M2P dash cam is programmed to turn ON and start recording automatically when it receives power, and when the power gets disconnected, it



will stop recording, save the last video safely and then shut down within 5 seconds automatically.

4. Settings

Now, by default all the settings are pre-set in a way that you can just start using the camera. However, you can customize it further by learning more about the camera by either watching How to Video or reading the User Manual so you can get the maximum benefit out of it and the best use experience.

5. Setting date & time

Please set the correct date and time based on your location under the Time Zone Setting by going to camera's system settings menu.

Note: The GPS module is not included in the package.

6. How to hide power cable inside your car's dash board?

Many people on YouTube already demonstrated how and where to hide power cable inside your car. You can view one of the possible ways on the link (this video is NOT recorded by us).

Video link: <https://www.youtube.com/watch?v=CZYaV5Dh4ok>



7. How to transfer videos to PC/Mac?

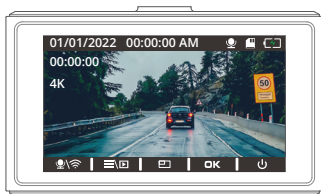
Insert memory card directly to your PC/Mac to view or download them. You can also connect your camera to your PC/Mac with the USB data cable. Then Select Connect as a Flash Drive. We recommend VLC Media Player to view your videos. You can get it free at www.videolan.org.

8. Wifi

You can also connect KINGSLIM M2P Car Dash Cam to your smart phone directly by using built-in Wifi feature. After your mobile phone is connected to the hotspot of our device, the 4G signal of the mobile phone will be blocked, and it will automatically recover after disconnection. It is recommended that you exit the APP or manually disconnect the device hotspot when you do not need to connect the device to your phone.

9. Button operation instructions

9.1 Preview interface



Microphone/Wifi indicator

Short-press the Down button to turn on or off Microphone. Long press to enter the Wifi mode.



Settings/Album

Short-press the Setup button to enter the settings menu. Long press to enter the playback page.



Mode Switching

Short-press the Up button to switch to the front or rear display mode.



Power icon

Long press the Power button to turn off the dash cam.

9.2 Recording interface



Microphone indicator

Short-press the Down button to turn on or off Microphone.

Emergency recording

Short-press Setup button to lock the current video.

Snapshot

Short-press the Down button to snap a shot.

9.3 Playback interface



Up button

Down button

Settings

Long press the Setup button to enter or exit the playback interface. Short-press to enter the video deletion page.

10. Camera Specifications

Sensor	GC4653
LCD touch screen	3-inch IPS
Video resolution	4K(Front only) / 2K(Front)+1080P(Rear) / 1080P(Front)+1080P (Rear)
Photo resolution	12M
Lens aperture	F/1.8
GPS	Optional
Wifi	Built-in
Video format	MP4
Memory card	Above Class10 U3 speed, max up to 256GB
G-sensor	Built-in 3-Axis
Anti flicker	50 Hz / 60 Hz
Loop recording	Support-seamless recording
Parking Mode	Support
Y/M/D D/M/Y M/D/Y	Support
24 hours/12 hours	Support
Mic/Speaker	Built-in Micro Phone & Speaker
Mini USB Function	1. Storage 2. Charging
Auto Power ON/OFF	Support
Power Interface	5V / 1.5A
Battery	Built-in li-ion 250 mAH battery
Operation Temperature	-4°F (-20°C) ~ 140°F (60°C)

2. Kingslim APP playback

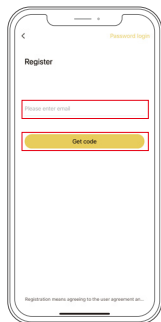
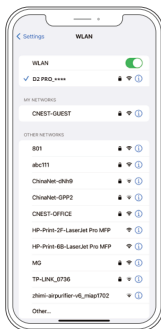
2.1 APP Download

Download the Kingslim APP on the App Store or Google Play.



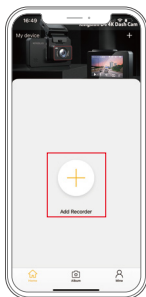
2.2 Connect to Kingslim APP

- ① Stop video recording on the dash cam.
- ② After pausing video recording, long press the Down button to enter the Wifi mode (once you quit, the Wifi will be disconnected.)
- ③ Go to your smartphone's Wifi settings, search for the same Wifi SSID name displayed on the screen, and enter the password 12345678 for connection.



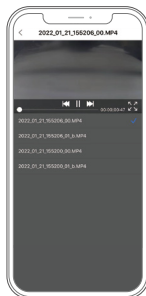
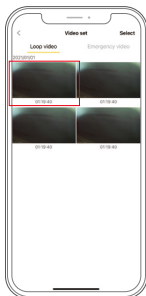
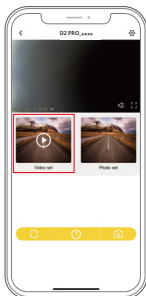
- ④ Open the Kingslim APP, tap the "New Account" icon, enter your email and get the verification code for login.

⑤ Tap "Add Recorder", wait a few seconds to enter the preview interface.



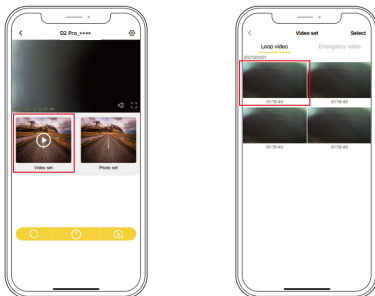
2.3 App playback

To play on smartphone, simply long press the Down button to turn on the camera Wifi first, then connect the Kingslim hot spot by entering the default password "12345678". Once connected, simply open the correct Kingslim App to add your model. Please note that for KINGSLIM models, only Kingslim App can be used for operation. Enter the preview interface, tap the "Video set" icon, then you can watch those videos.

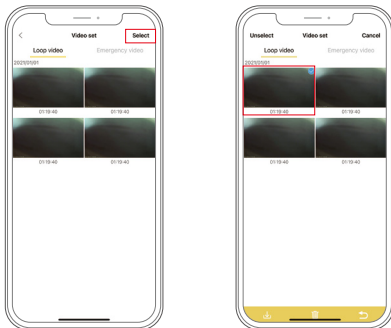



2.4 Using Kingslim App to download videos to your smartphone for local playback.

① Tap the “Video set” icon to enter the menu.



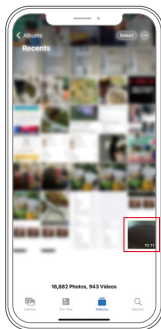
② Tap the “Select” icon at the upper right corner and tap the video you want to download.



- ③ Tap the icon  at the bottom left corner to download the video.



- ④ Waiting for the completion of download progress, the video will be downloaded to phone photo album. Tap the video and it will play.



3. PC/MAC playback

3.1 Data transmission

- ① Connect the camera with the included short USB cable and choose to connect as USB flash drive on the camera when this message pops up. (USB cable sold separately)

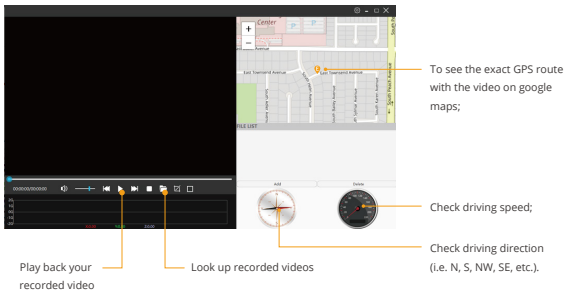


- ② You can simply remove the memory card from camera and insert it directly in your PC if you have a memory slot. Then find the added memory card drive on your computer and then use the player to play the video in the memory card.

3.2 Correct video player to play 4K videos

- ① We recommend VLC Media player. You can get the player for free at www.videolan.org
- ② GPS player (GPS player software installation (PC/MAC only). You can also use our GPS Player from our website for free to view the goggle maps from <https://kingslim.net/pages/gps-player>

What are the features ?



To see the exact GPS route with the video on goggle maps;

Check driving speed;

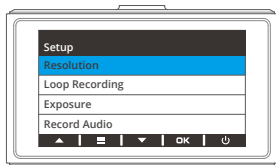
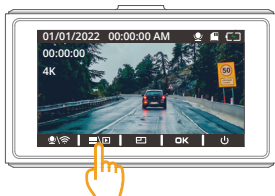
Check driving direction (i.e. N, S, NW, SE, etc.).

Play back your recorded videos.

Look up recorded videos.

Note: For IOS system computers, please carefully read download guidance on Apple's official website (<https://support.apple.com/en-au/HT202491>), otherwise the GPS player will not be installed successfully.

System Settings



Short-press the Setup button  to enter the menu page.

1. Resolution

The recording resolution of the front camera can be single 4K or 2K+1080P and dual 1080P. The default resolution is 4K. The recording resolution of rear camera is not optional, with a default resolution of 1080P.

Heads up:

1. The resolution will be 4K by default when the dash cam is turned on without the rear camera. To make 2K (Front)+1080P (Rear) or 1080P for dual recording possible, please plug the rear camera into the dash cam with the rear camera extension cable to set the resolution.
2. If the rear camera does not show on the screen, please reconnect the rear camera to the extension cable and make sure it's connected tightly.

2. Loop Recording

If the 3-minute option is selected, the recorder will save the video file every 3 minutes. When the memory card is full, the new video files will overwrite the old ones. If this function is turned off, the recorder will not be able to record when the memory card is full, so you need to format the memory card or replace it with a new one.

Options: off/1 minute/3 minutes/5 minutes (Default setting: 3 minutes)



3.Exposure

Select to change exposure.

Options: +0.0, -1/3, -2/3, -1.0, 4/3, -5/3, -2.0 (Default setting: +0.0)

4.Record Audio

Record sounds and videos at the same time

Option: on/off (Default setting: on)

5. Date Stamp

When Date Stamp is enabled, the date stamp will show at the bottom left corner of the video.

Options: Off/On (Default setting: on)

6. GSensor

When GSensor is turned on in the video recording mode, if an impact or sudden braking is detected, it will automatically start recording a 20-second video and save the content. The video will be locked in the front or rear emergency video folder and will never be overwritten by new video files. The higher the sensitivity level, the easier it is to trigger the emergency recording.

Options: Off/low/medium/high (Default setting: Off)

7. Parking Monitor

The dash cam will enter the parking monitoring mode when the engine is turned off. If an impact or sudden braking is detected, it will automatically start recording a 20-second video and save the content. The video will be locked in the front or rear emergency video folder and will not be overwritten by new video files. The higher level you select, the easier it is to trigger emergency recording.

Options: Off/low/medium/high

Default setting: Off

8. Date/Time

Sets the format you prefer.

Options: YY-MM-DD/DD-MM-YY/MM-DD-YY (Default setting: YY-MM-DD)

9. 12-Hour Time

Options: Off / On (Default setting: On)

10. LCD auto off

The screen will be turned off automatically after the time you set. After turning off, the screen will reduce power consumption. The camera still works while the display screen is turned off. Just press the Power button screen and it will turn on.

Options: Off / 30 Sec / 1 Min / 2 Min (Default setting: 1 Min)

11. Beep Sound

Turns on or off beep sounds.

Options: Off / On (Default setting: On)

12. Language

Options: English / Français / 简体中文 / Русский / 日本語 (Default setting: English)

13. Frequency

Choose the right frequency to reduce screen flickering. (Options: 50Hz / 60Hz)

Default setting: 60Hz

14. Format

Cancel / OK

① All data will be deleted after formatting. Before formatting the memory card, please back up the data on another device.

② When inserting the memory card for the first time, please format the memory card in the dash cam first to ensure that the memory card is compatible with the dash cam.

15. Default Setting

Restore the personality settings of the dash cam to the factory defaults, but the data on the memory card will not be removed.

16. Version

Displays this dash cam's model and software version.

17. Time Zone Select

Manually choose the corresponding time zone of your region, and the recorder will automatically display the date and time of the time zone.

Default setting: Off

Note: The GPS module is sold separately.

General FAQ

1. What to do if your dash cam turns on and off automatically?

- ① Check if the dash cam turns on normally when you remove the memory card and plug it in with a USB cable.
- ② If so, turn off your dash cam and plug it in with the original 5V car charger for about one hour, then turn it on manually to see if it works normally.
- ③ If the issue remains, restore your dash cam to the factory settings.

2. Why to do if your dash cam does not turn on?

- ① Check if the indicator light on the car charger turns on when your dash cam is plugged in.
- ② If not, plug the dash cam in another cigarette lighter or USB port for about one hour to see if it finally turns on.
- ③ If so, contact customer support for further help.

3. What to do if your dash cam does not turn off?

- ① Turn off the dash cam manually and restart it, or reset it to the factory settings.
- ② If your issue remains, contact customer support for further help.

4. What to do if your dash cam does not hold a charge?

- ① Plug in your dash cam with the USB cable to see if it holds a charge normally.
- ② If not, contact customer support for further help.

6. What to do if your dash cam does not save the time settings?

- ① Plug in the dash cam with the USB cable to see if it holds a charge normally.
- ② Make sure the Time Zone is set according to your local time.

7. What to do if your dash cam heats up?

- ① The dash cam may heat up while recording or even won't turn on in hot weather.
- ② We recommend you to turn on the air conditioning in your car before plugging in your camera.
- ③ When the dash cam cools down, plug it in to see if it turns on again.

7. What to do if your dash cam shows "Slow Card" or prompts to format the memory card?

- ① Select the memory card according to the user manual, such as a U3 memory card or above.
- ② Format the memory card in the dash cam's settings.

8. What to do if the camera Wifi is not connected?

- ① Check if your dash cam enters the Wifi mode and displays the Wifi information after you long press the Down button.
- ② If so, check if you can find the camera Wifi appears in your phone's Wifi list.
- ③ If your issue remains, contact customer support for further help.

9. What to do if you can't connect your dash cam with the Kingslim APP?

- ① Make sure the camera Wifi is connected normally before connecting with the app.
- ② Open the Kingslim APP, tap the New Account icon, enter your email and get a verification code for login.
- ③ Tap Add Recorder, and wait for a few seconds to enter the preview interface.
- ④ If your issue remains, contact customer support for further help.




Contact Us

☎ (888) 811-1140 (US)

✉ cs@kingslim.net

🌐 kingslim.net

For any inquiries about KINGSLIM products, please feel free to contact us. We will respond within 24 hours.



KINGSLIM

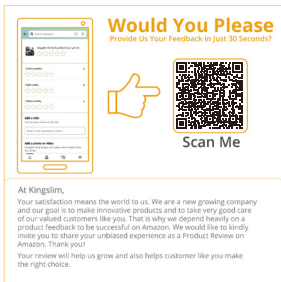
EXPERIENCING PROBLEMS?

Item NOT as described?
Damaged or defective?
Missing items?
Any issues what so ever?

CUSTOMER SERVICE

🕒 Mon-Fri 9am-5pm EST
✉ cs@kingslim.net
🌐 www.kingslim.net

Scan to email us



Would You Please
Provide Us Your Feedback in just 30 Seconds?

👍

Scan Me

At Kingslim,
Your satisfaction means the world to us. We are a new growing company and our goal is to make innovative products and to take very good care of our valued customers like you. That is why we depend heavily on a product feedback to be successful on Amazon. We would like to kindly invite you to share your unbiased experience as a Product Review on Amazon. Thank you!

Your review will help us grow and also helps customer like you make the right choice.



This device complies with part 15 of the FCC Rules. Operation is subject to the following two conditions: (1) This device may not cause harmful interference, and (2) this device must accept any interference received, including interference that may cause undesired operation.

Any Changes or modifications not expressly approved by the party responsible for compliance could void the user's authority to operate the equipment.

Note: This equipment has been tested and found to comply with the limits for a Class B digital device, pursuant to part 15 of the FCC Rules. These limits are designed to provide reasonable protection against harmful interference in a residential installation. This equipment generates uses and can radiate radio frequency energy and, if not installed and used in accordance with the instructions, may cause harmful interference to radio communications. However, there is no guarantee that interference will not occur in a particular installation. If this equipment does cause harmful interference to radio or television reception, which can be determined by turning the equipment off and on, the user is encouraged to try to correct the interference by one or more of the following measures:

- Reorient or relocate the receiving antenna.
- Increase the separation between the equipment and receiver.
- Connect the equipment into an outlet on a circuit different from that to which the receiver is connected.
- Consult the dealer or an experienced radio/TV technician for help.

This equipment complies with FCC radiation exposure limits set forth for an uncontrolled environment. This equipment should be installed and operated with minimum distance 20cm between the radiator & your body.