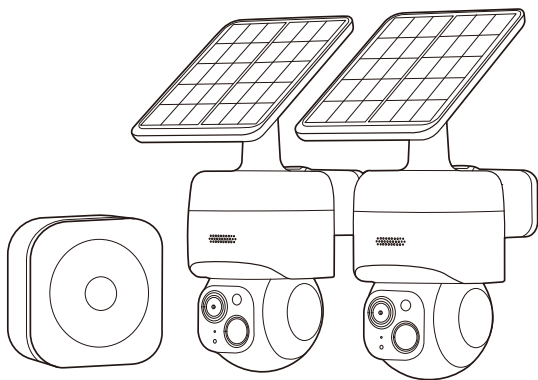


# User Manual

Wireless 4K Pan & Tilt Dual View  
SolarCam ST1 Set



safemo



# Table of contents



## **1. In the box**

## **2. At a glance**

## **3. Download Safemo App**

- Power on the camera & add to your app

## **4. Prepare the hub**

- Power on the hub
- Expand storage space (optional)

## **5. Power on the camera**

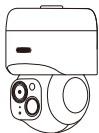
## **6. Mounting the camera**

- Charging the camera(recommended)
- Select location & height
- Select a location for the solar panel
- Mount with the solar panel attached
- Mount separately with the solar panel

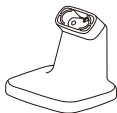
## **7. Matter Setup Instructions**

- How Matter works with Safemo devices
- Safemo device setup and integration

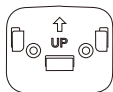
# 1. In the box



Smart Battery Cam x 2  
(SS121)



Mounting bracket x 2



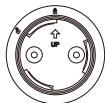
Anchor plate x 2



Solar Panel x 2



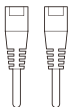
Solar panel's  
mounting bracket x 2



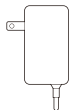
Solar panel anchor  
plate x 2



Smart Hub x 1  
(SS011)



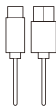
Ethernet cable x 1



Power adapter x 1



USB-C extension  
cable x 2



USB-C charging  
cable x 1



Screws



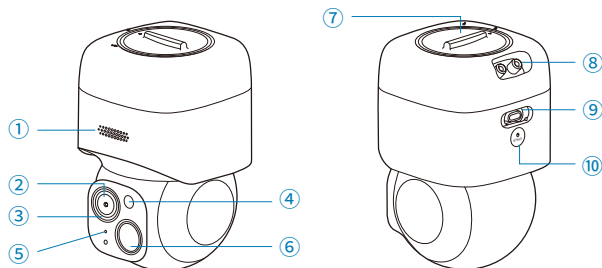
Drywall  
anchors



Cable  
clips

## 2. At a glance

### Camera

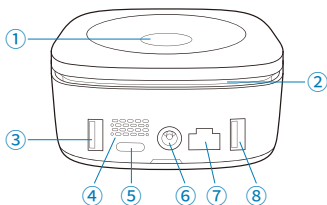


- ① Speaker
- ② Cam Lens
- ③ LED Light
- ④ Spotlight
- ⑤ Microphone

- ⑥ PIR Sensor
- ⑦ Solar Panel Mounting Cover
- ⑧ Mounting Hole
- ⑨ USB-C Charging Port
- ⑩ ⏻ /SYNC Button

### Hub

- ① Alarm off/Mode switch button
- ② LED indicator
- ③ USB 2.0 (5V/1A) port
- ④ Speaker
- ⑤ ⏻ /SYNC
- ⑥ Power port
- ⑦ Ethernet port
- ⑧ USB 2.0 (5V/2A) port



## 3.Download Safemo app

Search "Safemo" in your phone's app store or scan the QR code.

To reduce the risk of scams or malware, use your phone's camera app for scanning QR codes instead of third-party apps.



<https://app.safemo.com>

## Add devices to your app

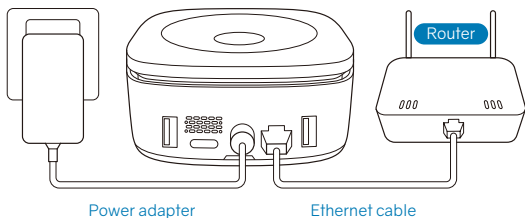
Follow the in-app instructions to begin using your security cameras and hub.



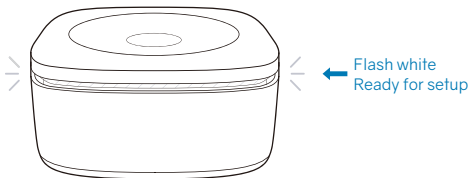
## 4. Prepare the hub

### Power on the hub

1. Connect the power adapter to the power outlet and hub. Then, plug in the Ethernet cable into the hub and your router, which is required for the initial internet setup.



2. Wait approximately 2-3 mins. for the LED indicator to flash white, accompanied by a "ding-dong" sound, indicating that the hub is ready for setup.



# Expand storage space (optional)

**Note:** power off the hub before operation.

The hub has 32GB of internal storage. To increase the hub's storage space up to 4TB, install an external SSD\* hard drive.

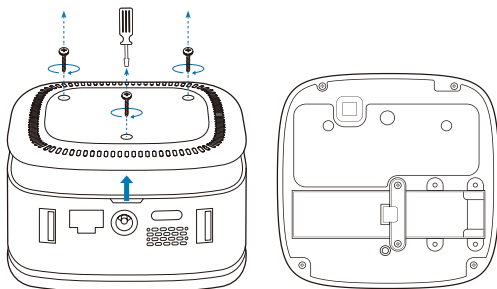
*\*External SSD hard drive is not included in this product's package and must be purchased separately from an electronics retailer.*

## 1. Confirm the hub is powered off & prepare the SSD hard drive.

Compatible Size: M.2 2242, M.2 2260, and M.2 2280 models

Compatible Type: NVMe SSDs (M Key or a B+M Key)

## 2. Open the hub's bottom cover with a screwdriver.

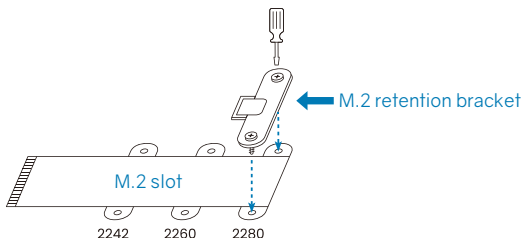




### 3. Adjust the M.2 retention bracket for your SSD

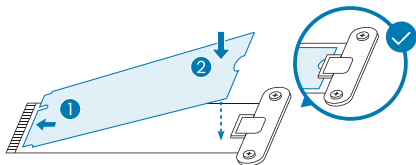
- Identify the size of your SSD (2242, 2260, or 2280) in the M.2 slot.
- Use a screwdriver to secure the M.2 retention bracket in the area according to the SSD's size.

*Installation example for SSD 2280*



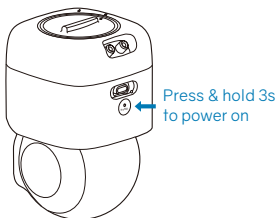
### 4. Align your SSD in the M.2 slot, ensuring the connectors match.

- Gently insert the SSD into the M.2 slot at a slight angle.
- Once inserted, press down on the opposite end of the SSD so it lies flat and is secured by the M.2 retention bracket.
- Close the hub's bottom cover using the screwdriver.



## 5.Power on the camera

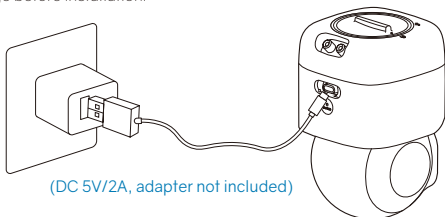
Follow the in-app instructions to begin using your security cameras.





## 6.Mounting the camera

### Charging the camera(recommended)

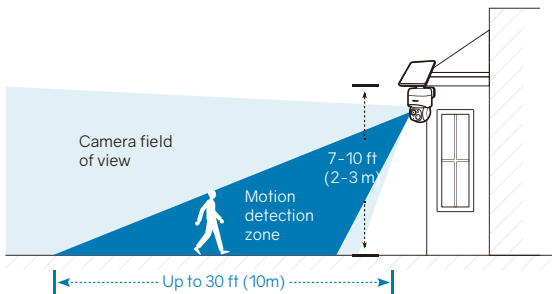
Fully charge before installation.



Charging Time	Charging	Fully Charged
8 Hours	 Yellow Light	 Green Light

## Select location & height

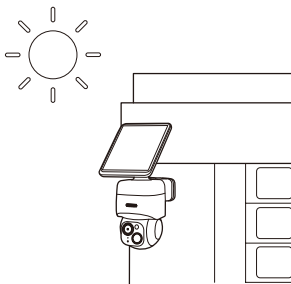
We recommend hanging the camera 7-10 ft (2-3m) above the ground to capture the desired camera angle.



## Select a location for the solar panel

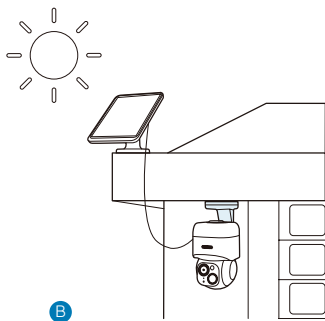
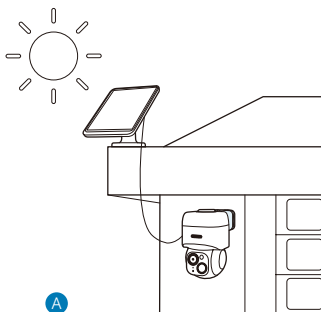
**Option 1: Mount the camera with the solar panel attached.**

If the solar panel won't be blocked, install the solar panel directly on top of the camera.



## Option 2: Mount the camera separately with the solar panel.

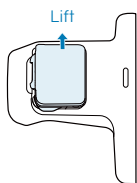
If the solar panel will be blocked by leaves or other; install the solar panel independently and use the provided USB-C extension cable to get strong solar power. The camera can be mounted on a wall (Option A) or on the ceiling (Option B).



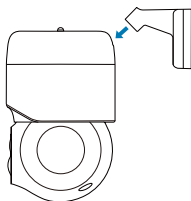
# Mount with the solar panel attached

**Note:** Less drilling required.

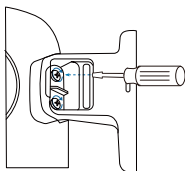
1. Lift the waterproof cover, firmly secure the camera onto the mounting bracket, tighten the screw to secure it, and press the waterproof cover tightly.



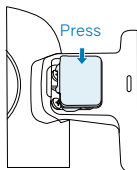
1



2

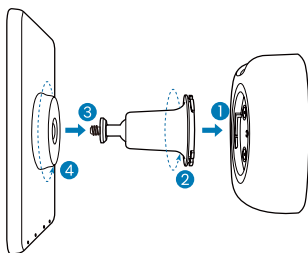
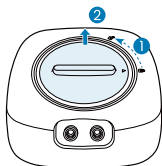


3

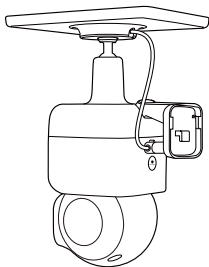


4

2. Unscrew the solar panel mounting cover and replace with the solar panel's mounting bracket, then screw on the solar panel to secure it.

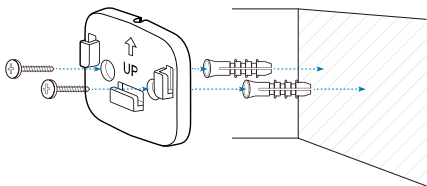


- Connect the USB-C connector to the USB-C port of the solar panel and tighten it.

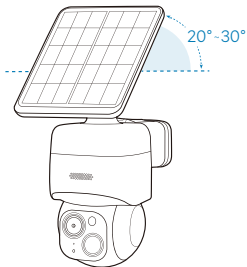
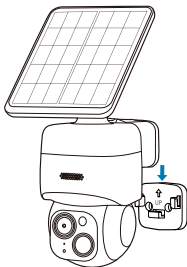


### 3. Mount the anchor plate

- If installing on a masonry surface like stucco or brick, use the provided drill bit to make your holes, then insert wall anchors before installing the screws. If installing on a wooden surface, use the install screws to screw the mounting bracket directly into your wall.
- Use a 15/64-inch (6mm) drill bit to drill holes where the anchor plate will be placed.
- Attach the anchor plate to the wall, ensuring the "Up" label on the plate is placed in the upward direction.



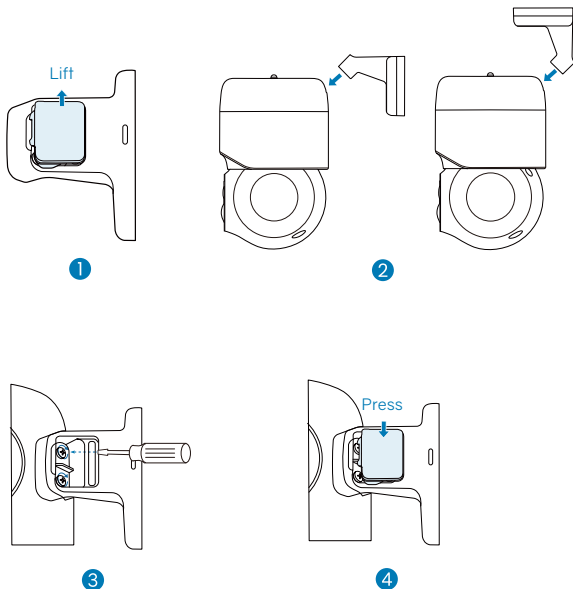
- Firmly secure the camera onto the anchor plate and adjust the angle of solar panel ( $20^{\circ}$ ~ $30^{\circ}$  recommended).



# Mount separately with the solar panel

**Note:** *Ideal for maximum solar power.*

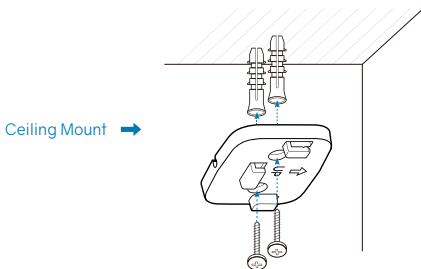
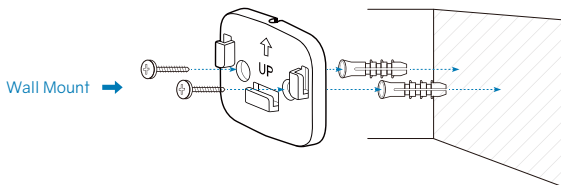
1. Lift the waterproof cover, firmly secure the camera onto the mounting bracket, tighten the screw to secure it, and press the waterproof cover tightly.



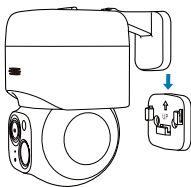


## 2. Mount the anchor plate

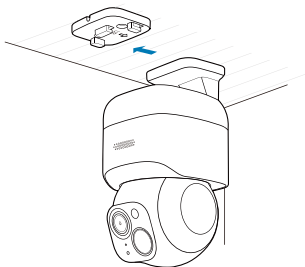
- If installing on a masonry surface like stucco or brick, use the provided drill bit to make your holes, then insert wall anchors before installing the screws. If installing on a wooden surface, use the install screws to screw the mounting bracket directly into your wall.
- Use a 15/64-inch (6mm) drill bit to drill holes where the anchor plate will be placed.
- Attach the anchor plate to the wall, ensuring the "Up" label on the plate is placed in the upward direction.



- Firmly secure the camera onto the mounting bracket.

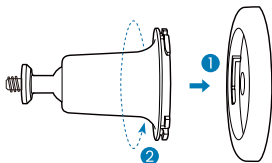
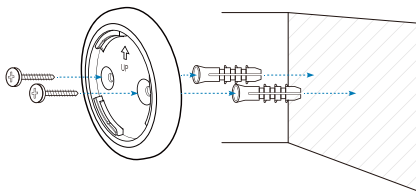


Wall Mount

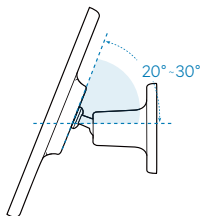
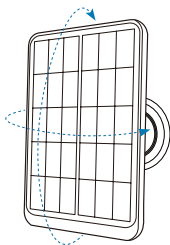
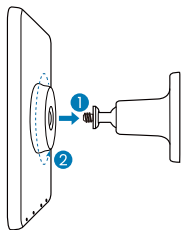


Ceiling Mount

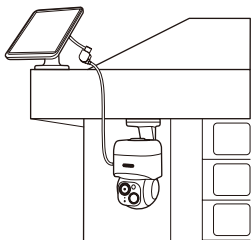
- Install the mounting bracket of the solar panel in a suitable position.



- Screw the solar panel onto its mounting bracket, then adjust the angle (20°~30° recommended).



- Connect the solar panel to the camera using the provided USB-C extension cable.



USB-C extension cable

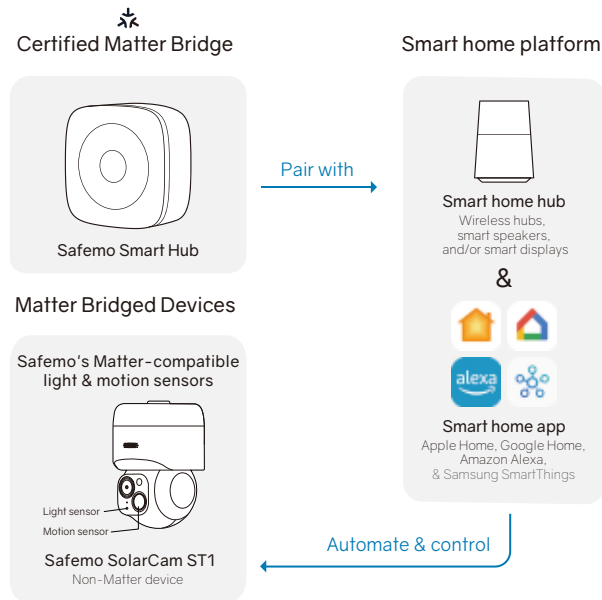


# 7.Matter Setup Instructions

## How Matter works with Safemo devices

Connect and control Safemo's Matter-compatible devices from your preferred smart home platform's app and hub with Matter, a new universal standard for smart home devices.

### How it works ▼



Safemo Smart Hub is a Matter Bridge that connects Safemo's security camera's built-in light and motion sensors with your preferred smart home app and device.

Although the sensors are Matter-compatible, the security camera currently is not Matter-compatible.

## Safemo device setup and integration

We recommend setting up your Safemo hub and cameras in the Safemo App first, before pairing Safemo's Matter-compatible devices to your preferred smart home platform.

### 1. Pick your smart home platform

#### Brand & app

#### Smart home hubs

##### Apple Home



- Apple HomePod mini
- Apple HomePod
- Apple TV 4K (2nd generation and 3rd generation WiFi + Ethernet 128GB model)

##### Google Home



- Google Home Speaker
- Nest Hub (1st gen)
- Nest Hub (2nd gen)
- Nest Hub Max

##### Amazon Alexa



- Echo Dot (5th Gen)
- Echo (4th Gen)
- Echo Show (2nd Gen)
- Echo and more.

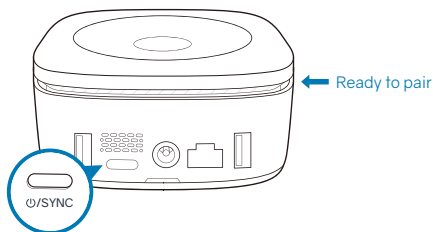
##### Samsung SmartThings



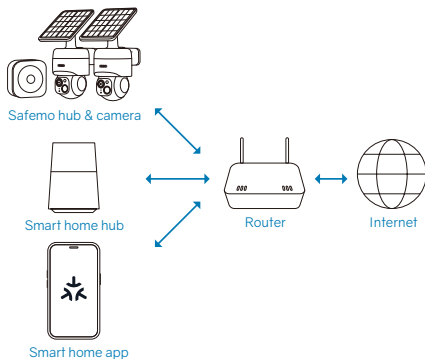
- SmartThings 2018 Hub (IM6001-V3P01)
- Aeotec Smart Home Hub

## 2. Pair Safemo hub with smart home platform

- Press the "Sync" button 2 times to get Safemo hub ready to pair with your preferred smart home app. When the hub's LED indicator flashes white, it is ready to pair.

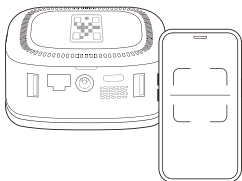


- Confirm that your Safemo hub& camera, smart home app, and smart home hub are all connected to the same local network.

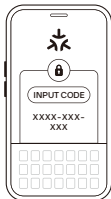


- Scan Safemo hub's Matter QR code on the bottom of the device or input the Matter Pairing code located below the Matter QR code into your smart home app.

### Scan Matter QR code



### Input Matter Pairing code

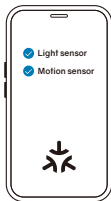


**Scan the QR code for tips on pairing Safemo hub with your preferred smart home platform.**



- The motion and light sensors will automatically sync and be ready to access after successfully pairing Safemo hub to your smart home app.

### Smart home app



## 3. Automate & control the sensors

#### • Motion sensors

Enable the motion sensor within your smart home app to receive motion detection notifications and to power on the light when someone passes by.

#### • Light sensors

Enable the light sensor within your smart home app to automatically measure and adjust the light's brightness.

# Safety and Compliance

- Do not use the device in environments with excessively high or low temperatures, and never expose the device to strong sunlight or very wet conditions.
- The suitable temperature for SS121 and its accessories is -20°C/-4°F to 50°C/122°F. (Charging temperature is 0°C/32°F to 45°C/113°F).
- The suitable temperature for SS011 and its accessories is -20°C/-4°F to 50°C/122°F.
- It is recommended to supply the device in an environment with a temperature that ranges from 5°C/41°F to 25°C/77°F.
- When supplying, please place the device in an environment that has a normal room temperature and good ventilation.
- The adapter shall be installed near the equipment and shall be easily accessible.
- Please ensure to use only the adapter offered by the manufacturer, or any adapters that comply with local regulations and certifications.
- Using unauthorized adapter may cause danger and violate the authorization of the device and the guarantee article.
- This adapter is for indoor use only. The adapter type for SS011 hub's rated output voltage / current is DC 12V/2A. The plug is considered a disconnected device from the adapter. (The adapter type for SS121 camera rated output voltage / current is DC 5V/2A).

## Warning

Replacing the battery with an incorrect version can destroy the safety mechanisms within the device.

Inappropriate battery disposal, for

example, into a fire or a hot oven, or mechanically crushing or cutting the battery, can result in an explosion. Leaving a battery in a very high-temperature environment can result in an explosion or the leakage of flammable liquid or gas.

A battery subjected to extremely low air pressure may result in an explosion or the leakage of flammable liquid or gas.

## Attention

Le remplacement de la batterie par un type incorrect peut détruire les mécanismes de sécurité à l'intérieur de l'appareil.

L'élimination inappropriée de la batterie – par exemple, dans un feu ou dans un four, ou par écrasement ou coupure – peut provoquer une explosion.

Le maintien de la batterie dans un environnement à très haute température peut provoquer une explosion ou la fuite de liquide ou de gaz inflammables.

Une batterie soumise à une pression d'air extrêmement faible peut provoquer une explosion ou la fuite de liquide ou de gaz inflammables.



**CAUTION: RISK OF EXPLOSION IF BATTERY IS REPLACED BY AN INCORRECT MODEL. DISPOSE OF USED BATTERIES ACCORDING TO THE INSTRUCTIONS.**



**ATTENTION: RISQUE D'EXPLOSION SI LA BATTERIE EST REMPLACÉE PAR UN TYPE INCORRECT. ÉLIMINER LES BATTERIES USÉES SELON LES INSTRUCTIONS.**



# Notice

## FCC Statement

This device complies with Part 15 of the FCC Rules. Operation is subject to the following two conditions:

- (1) this device may not cause harmful interference;
- (2) this device must accept any interference received, including interference that may cause undesired operation.

**Warning:** Changes or modifications not expressly approved by the party responsible for compliance could void the user's authority to operate the equipment.

**Note:** This equipment has been tested and found to comply with the limits for a Class B digital device, pursuant to Part 15 of the FCC Rules. These limits are designed to provide reasonable protection against harmful interference in a residential installation.

## FCC Radio Frequency Exposure Statement

This device has been evaluated to meet general RF exposure requirements. The device can be used in fixed/mobile exposure conditions. The minimum separation distance is 20 cm.

**Notice:** Shielded cables

This equipment generates, uses and can radiate radio frequency energy and, if not installed and used in accordance with the instructions, may cause harmful interference to radio communications.

However, there is no guarantee that interference will not occur in a particular installation. If this equipment does cause harmful interference to radio or television reception, which can be determined by turning the equipment

on and off, the user is encouraged to try to correct the interference by one or more of the following measures:

- (1) Reorient or relocate the receiving antenna.
- (2) Increase the separation between the equipment and receiver.
- (3) Connect the equipment into an outlet on a circuit different from that to which the receiver is connected.
- (4) Consult the dealer or an experienced radio/ TV technician for help.

All connections to other computing devices must be made using shielded cables to maintain compliance with FCC regulations.

## IC Statement

This device complies with Industry Canada Licence-exempt RSS standard(s). Operation is subject to the following two conditions:

- (1) this device may not cause interference, and
- (2) this device must accept any interference, including interference that may cause undesired operation of the device.

Le présent appareil est conforme aux CNR d'Industrie Canada applicables aux appareils radio exempts de licence. L'exploitation est soumise aux deux conditions suivantes:

- (1) l'appareil ne doit pas produire de brouillage, et
- (2) l'utilisateur de l'appareil doit accepter tout brouillage radioélectrique subi, même si le brouillage est susceptible d'en compromettre le fonctionnement.

This Class B digital apparatus complies with Canadian ICES-003.

Cet appareil numérique de la classe B est conforme à la norme NMB-003 du Canada.

## IC RF Statement

When using the product, maintain a distance of 20 cm from the body to ensure compliance with RF exposure requirements.

Lors de l'utilisation du produit, maintenez une distance de 20 cm du corps afin de vous conformer aux exigences en matière d'exposition RF.

## EU Statement



This product complies with the radio interference requirements of the European Community. Hereby, Safemo Pte. Ltd. declares that this device is in compliance with the essential requirements and other relevant provisions of Directive 2014/53/EU. For the declaration of conformity, visit the Website: <https://www.safemo.com>  
This product can be used across EU member states.

## RF exposure information

The Maximum Permissible Exposure (MPE) level has been calculated based on 20 cm between the device and the human body. To maintain compliance with RF exposure requirement, use product while maintaining a 20 cm distance between the device and human body.

Camera Wi-Fi Operating Frequency Range: 2412-2472 MHz(2.4G), Wi-Fi Max Output Power: 20 dBm(EIRP); Camera Bluetooth Operating Frequency Range: 2402-2480 MHz; Bluetooth Max Output Power: 8 dBm(EIRP); This product is designed and manufactured with high quality materials and components, which can be recycled



and reused. This symbol means the product must not be discarded as household waste, and should be delivered to an appropriate collection facility for recycling. Proper disposal and recycling helps protect natural resources, human health and the environment. For more information on disposal and recycling of this product, contact your local municipality, disposal service, or the shop where you purchased this product.

## UK Statement



This product complies with the radio interference requirements of the United Kingdom Declaration of Conformity.

Hereby, Safemo Pte. Ltd. declares that this product is in compliance with Radio Equipment Regulations 2017(S.I. 2017/1206). The full text of the UK declaration of conformity is available at the following internet address: <https://www.safemo.com>

For additional help, visit [safemo.com/pages/support](https://www.safemo.com/pages/support)

Safemo Pte. Ltd. All rights reserved. Safemo and the Safemo logo are registered trademarks of Safemo Pte. Ltd. in the United States and other countries. Certain trademarks including, App Store, and Google Play are the property of their respective owners.



# safemo

For additional help, visit [safemo.com/pages/support](https://safemo.com/pages/support)

Safemo Pte. Ltd. All rights reserved. Safemo and the Safemo logo are registered trademarks of Safemo Pte. Ltd. in the United States and other countries. Certain trademarks including, App Store, Google Play and Matter are the property of their respective owners.



[support@safemo.com](mailto:support@safemo.com)



[www.safemo.com](https://www.safemo.com)



@Safemo

Address: 505, Heng Loong Building, 61 Bukit Batok Cres, Singapore

Model: SK014



Y C . B Z . Y S 0 0 0 7 1