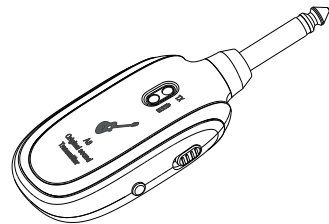


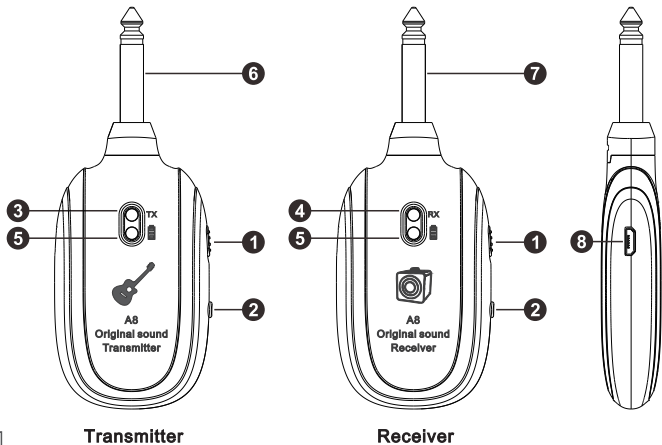
A8-1

OWNER'S MANUAL



A8 Guitar Wireless System

USER'S MANUAL



Functions

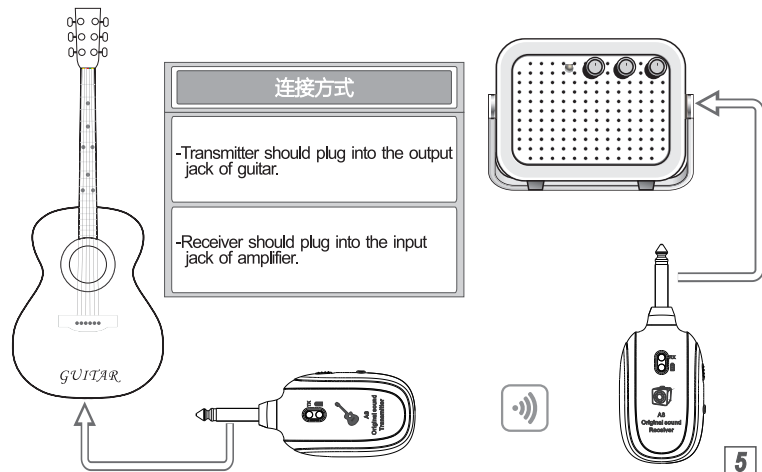
1 Power switch	Power switches of transmitter and receiver.
2 Channel selection and matched switch	-Short press the button,indicator light of Tx or Rx flashes,and the times of flashing means the channel No. -Channel pairs:shall choose the same channel for the transmitter and receiver. -Remark:shall choose the different channels when two or more machines are used at the same time. (up to 4 wireless systems can be used at the once)
3 Indicator light of transmitter	-At boot,the indicator light will indicate the channel number according to the corresponding flashing times of channel. -Later,the red light keeps on,with being in transmitting state.
4 Indicator light of receiver	-At boot,the indicator light will indicate the channel number according to the corresponding flashing times of channel. -If receive the signal of transmitter,the green light keeps on, with being in receiving state. -If no corresponding signal was received,the light turns off.

Functions

5	Indicator light of power	-Be used for indicating the electric quantity during the normal usage of transmitter and receiver ; When the green light comes on ,the power is more than 70%;When the red and green light come on at the same time,the power is 30%~70%;When the red light comes on,the power is less than 30%, please charge it as soon as possible. -In charging,the green light flashes,said it charging. When it is full of power,the green light comes on.
6	Guitar input	Universal to all electric guitars and electroacoustic instruments
7	Amplifier output	Connecting amplifier or other sound-producing equipement
8	USB In Charger	Micro USB interface for recharging

4

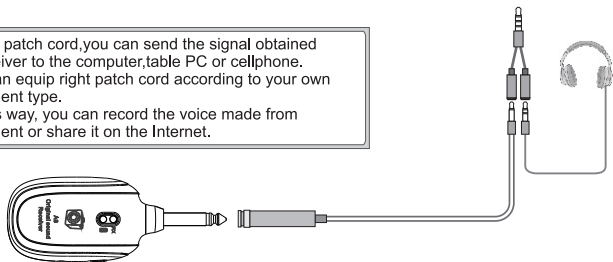
USAGE FOR GUITAR/AMPLIFIER



USAGE FOR GUITAR/AMPLIFIER



-By the patch cord, you can send the signal obtained by receiver to the computer, table PC or cellphone.
-You can equip right patch cord according to your own equipment type.
-By this way, you can record the voice made from instrument or share it on the Internet.

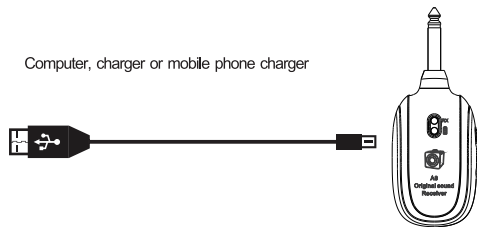


6

CHARGE



Computer, charger or mobile phone charger



7

SPECIFICATION

- 1 Frequency Response : UHF
- 2 Frequency Broad: 20Hz-20kHz
- 3 Latency: less than 4ms
- 4 Charge port: Micro USB
- 5 Charging Time: 2h
- 6 Battery Life: 4h
- 7 Size: 110*43*17mm
- 8 Weight: 50g

8

CAUTIONS

- 1, when using, do not make it faces the speaker, and keep the distance between 1.5 meters to prevent whistle.
- 2,when using, if the speaker whistle, Try to turn the sound box down.

9

QUALITY ASSURANCE

- This product is manufactured by strict quality control and inspection.
- If happening trouble in normal use, customer support center will repair in free during guarantee period.
- If being related to cost service, even though passing or not passing the guarantee period, it needs the repair cost.
- If need a repair, please present a guarantee letter.
- Guarantee letter can not be re-issued again, so please keep it carefully.
- This guarantee is available only in the domestic.

10

PRODUCT WARRANTY

Product Name	WIRELESS TRANSMITTER & RECEIVER		Model No	FW-1			
Purchase date	Year	Month	Day	Guarantee Period	1Year	Holding period for repairing part	1 year after the product is discontinued
Customer	Name					Tel	
	Address						
Manufacturer	Name					Tel	
	Address						
Seller	Company					Tel	
	Address					Name	

11

FCC Caution.

This device complies with part 15 of the FCC Rules. Operation is subject to the following two conditions:

- (1) This device may not cause harmful interference, and
- (2) this device must accept any interference received, including interference that may cause undesired operation.

Any Changes or modifications not expressly approved by the party responsible for compliance could void the user's authority to operate the equipment.

Note: This equipment has been tested and found to comply with the limits for a Class B digital device, pursuant to part 15 of the FCC Rules. These limits are designed to provide reasonable protection against harmful interference in a residential installation. This equipment generates uses and can radiate radio frequency energy and, if not installed and used in accordance with the instructions, may cause harmful

- Reorient or relocate the receiving antenna.
- Increase the separation between the equipment and receiver.
- Connect the equipment into an outlet on a circuit different from that to which the receiver is connected.
- Consult the dealer or an experienced radio/TV technician for help.

This equipment complies with FCC radiation exposure limits set forth for an uncontrolled environment.

IC Warning

This device complies with Industry Canada licence-exempt RSS standard(s).

Operation is subject to the following two conditions:

- (1) This device may not cause interference, and
- (2) This device must accept any interference, including interference that may cause undesired operation of the device.

Le présent appareil est conforme aux CNR d'Industrie Canada applicables aux appareils radio exempts de licence. L'exploitation est autorisée aux deux conditions suivantes: (1) l'appareil ne doit pas produire de brouillage, et (2) l'utilisateur de l'appareil doit accepter tout brouillage radioélectrique subi, même si le brouillage est susceptible d'en compromettre le fonctionnement