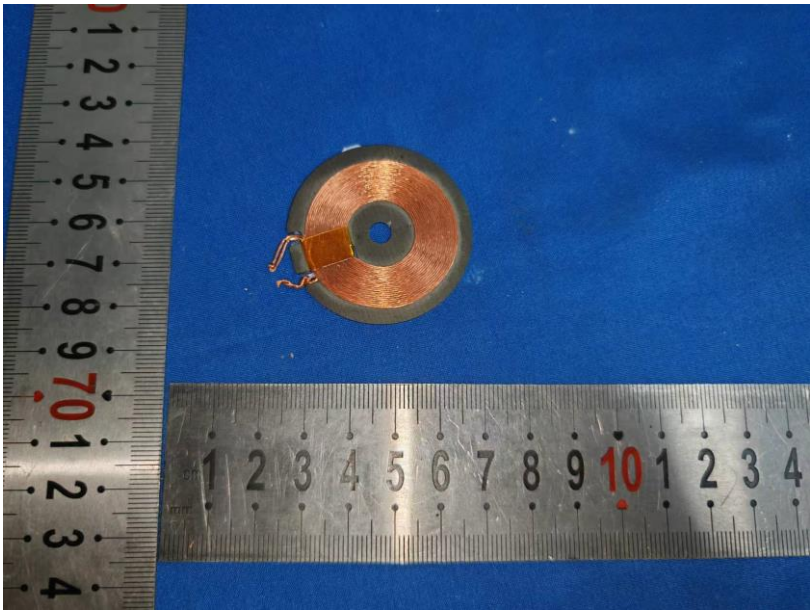
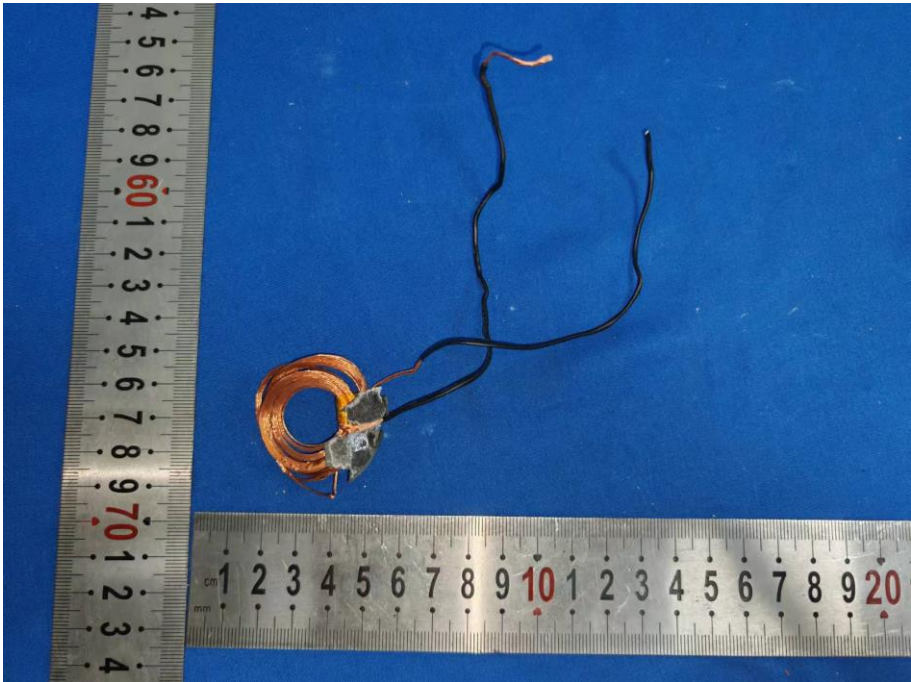


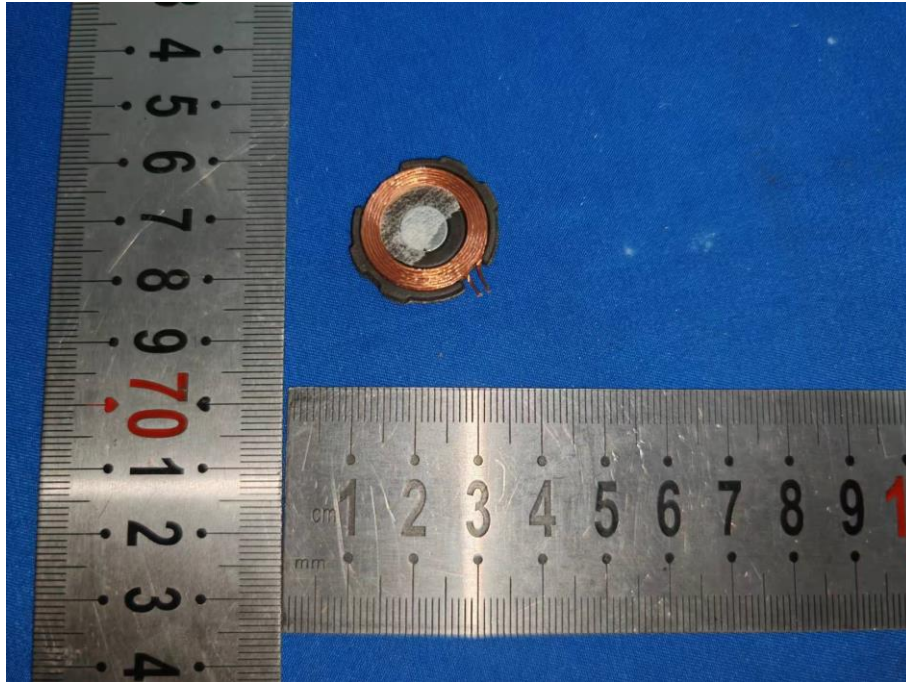
ANT PHTOT



L	W	H
36mm±0. 2	36mm±0. 2	0. 2mm±0. 1



L	W	H
35mm±0. 2	35mm±0. 2	0. 2mm±0. 1



L	W	H
28mm±0.2	28mm±0.2	0.2mm±0.1

All measurements were performed radiated and therefore additional antenna gain documentation is not required.