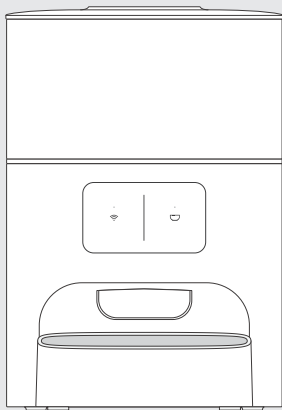




**PET MARVEL®**



**Smart Pet Feeder [Cubie M3]**

# Welcome

Great thank you for choosing us!

This manual is hereby to guide you to fully understand and quickly install this product, meanwhile provide detailed information about usage and maintenance to help you achieve the best product experience.

If you have any questions during use, please feel free to contact User Service Department:

✉ [customerservice@petmarvel.com](mailto:customerservice@petmarvel.com)

Or directly contact the distributor who you bought this product from.

Scan the QR code below or search "PET MARVEL" in App Store/Google Play to download our App to unlock more features.



Scan to download App



Scan to view tutorials on use

TECHNOLOGY  
CARES FOR PET  
HEALTH

# 1 User's Guide

Please read this instruction manual carefully before using the product and keep it for future reference.

## **Warning:**

Please use the product indoors and avoid direct sunlight from balconies or other places.

Do not put anything other than dry pet food and freeze-dried food into the storage barrel, as it may cause device malfunctions or pose a risk of pets consuming foreign objects.

Cover or store the power cord properly to prevent pets from chewing on it and causing electric shock or other hazards.

Do not directly wash the main body of the device to prevent damage to internal electronic components.

## **Caution:**

To prevent pets from knocking over the device, it is recommended to place it in a corner or against a wall.

Do not disassemble, modify, or repair the device by yourself, as it will void all warranty and after-sales service rights.

This device is suitable for dry pet food with a diameter of up to 15mm. Do not put wet pet food in the device to prevent blockage of the dispensing chute and damage to electronic components due to moisture.

The shape and density of pet food particles may affect the actual capacity of the storage barrel; the amount of food dispensed may vary due to different food densities. If you have short-term travel plans, it is recommended to install dry batteries in the device in advance to prevent the device from malfunctioning due to temporary power outages at home.

This equipment has been tested and found to comply with the limits for a Class B digital device, pursuant to Part 15 of the FCC Rules. These limits are designed to provide reasonable protection against harmful interference in a residential installation. This equipment generates uses and can radiate radio frequency energy and, if not installed and used in accordance with the instructions, may cause harmful interference to radio communications. However, there is no guarantee that interference will not occur in a particular installation. If this equipment does cause harmful interference to radio or television reception, which can be determined by turning the equipment off and on, the user is encouraged to try to correct the interference by one of the following measures:

- Reorient or relocate the receiving antenna.
- Increase the separation between the equipment and receiver.
- Connect the equipment into an outlet on a circuit different from that to which the receiver is connected.
- Consult the dealer or an experienced radio/TV technician for help.

"This device complies with part 15 of the FCC Rules. Operation is subject to the following two conditions: (1) This device may not cause harmful interference, and (2) this device must accept any interference received, including interference that may cause undesired operation."

Radiation Exposure Statement:

1. This equipment complies with FCC/IC radiation exposure limits set forth for an uncontrolled environment.

This equipment should be installed and operated with minimum distance 20cm between the radiator & your body.

2. The device has been evaluated to meet general RF exposure requirement.

"Changes or modifications not expressly approved by the party responsible for compliance could void the user's authority to operate the equipment".

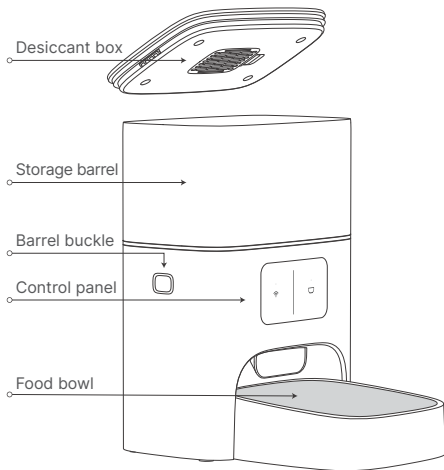
① This appliance can be used by children aged from 8 years and above and persons with reduced physical, sensory or mental capabilities or lack of experience and knowledge if they have been given supervision or instruction concerning use of the appliance in a safe way and understand the hazards involved.

② Children shall not play with the appliance.

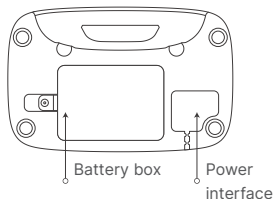
③ Cleaning and user maintenance shall not be made by children without supervision.

④ This appliance must only be supplied at safety extralow voltage corresponding to the marking on the appliance.

## ② Product Introduction



Device bottom



 **Wi-Fi Button:** Press and hold for 7 seconds to enter pairing mode.

- White flashing: Pairing mode
- Solid white: Connected to Wi-Fi
- Breathing white: Device upgrading

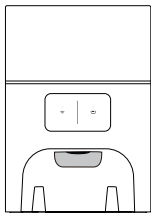
 **Dispense Button:** Press twice to dispense 2 servings of food.

- Orange flashing: Storage barrel not installed
- Solid orange: Low food level in the storage barrel
- Solid red: Food jam/device malfunction
- Red flashing: Low battery

### ③ Package Contents

#### Note

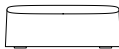
After opening the product package, please check if the product is intact and compare the accessories with the following image. In addition, due to continuous product updates, some accessories may be adjusted. Please refer to the actual items.



Feeder main body \*1



Top cover \*1



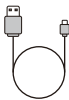
Food bowl \*1



Stainless steel bowl \*1



Product manual \*1



Type-C power cord \*1

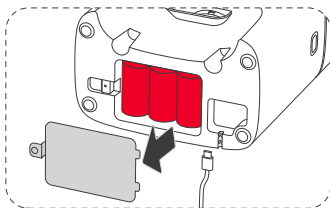


Desiccant \*1

## 4 Product Usage

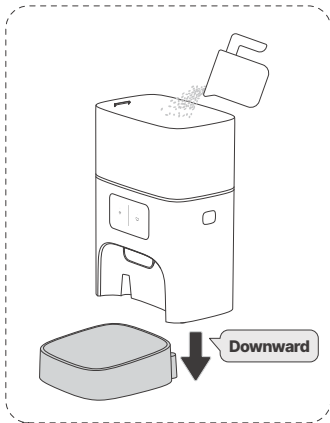
### Product Assembly

❶ Connect the power adapter: Connect the power adapter to the power interface at the bottom of the device, then plug it into a socket. If you hear a short beep sound and see the indicator light flashing white, the device has been successfully powered on.



❷ Battery replacement: Open the bottom battery cover, replace with 3 new size D batteries, and then close the battery cover.

❸ Assemble the storage barrel, main unit, and food bowl as shown in the diagram.





## APP Download

New users: Scan the QR code in the diagram or search for "PET MARVEL" in the App Store/Google Play Store to download and register the app.

Existing users: For users who have already downloaded the app, scanning the QR code will directly take you to the device connection page.

## Device Network

Open the "PET MARVEL" app, keep your phone close to the device, and follow the pairing instructions shown in the app. Scan the QR code in the diagram for the tutorial. Device unbinding (resetting pairing): Press and hold the "Wi-Fi Key" on the device for 7 seconds, listen for a short beep sound, and see the indicator light flashing white, indicating that the device has been successfully unbound and the pairing has been reset.



**Scan to download App**



**Scan to view tutorials**

## Product Usage

The device will automatically detect if there is enough pet food in the storage barrel. If it is insufficient, the indicator light will be solid orange.

Open the top cover and add pet food to the storage barrel.

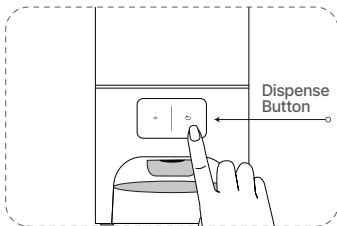
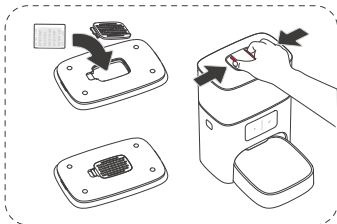
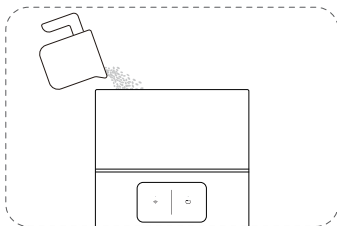
### Desiccant replacement

Open the desiccant box and remove the used desiccant packet.

Place a new desiccant packet into the box, close the lid, and put the top cover back in place.

It is recommended to replace the desiccant packet every 1-3 months.

Manual dispensing: Quickly press the "Dispense Button" on the device twice to dispense 2 servings of food.



## 5 Maintenance and Care

For the health of your pets, it is recommended to regularly clean the feeder storage barrel components and food bowl.

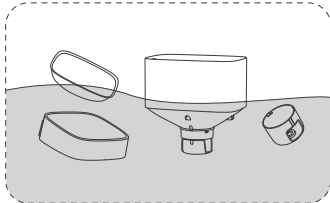
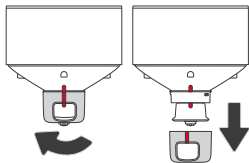
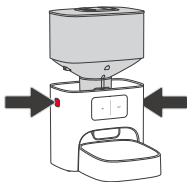
### Storage barrel Cleaning

- 1 Remove the storage barrel by holding down the buttons on both sides of the main unit and lifting the storage barrel upwards.
- 2 Remove the turnplate—refer to the image, turn and take out the turnplate cover and wipe or wash to ensure thorough cleaning.
- 3 Installation—After ensuring that the parts are completely dry, put them back on the main unit in their original positions to continue using.

### Food Bowl Cleaning

It is recommended to clean the food bowl every 3 days. After removing the food bowl, wipe or wash it, and make sure it is completely dry before putting it back in place.

**Note:** The main body is not washable and can only be wiped with wet wipes. Only the stainless steel bowl can be placed in the dishwasher.



## 6 Troubleshooting

If you encounter the following situations during product usage, please refer to the table below for possible causes and solutions:

No.	Abnormal Situation	Possible Causes	Solutions
1	Continuous red indicator light on the right side, E1 error prompt on the app.	Food jam/device malfunction	Please check if there is any blockage at the food dispensing chute or turnplate. Clear the blockage and try again. If the issue persists, please contact customer support.
2	Continuous red indicator light on the right side, E2 error prompt on the app.	Micro switch or motor malfunction	Please contact customer support.
3	Flashing orange indicator light on the right side.	Storage barrel not installed	Check if the storage barrel is properly installed.
4	Continuous orange indicator light on the right side.	Storage barrel low on food	Supplement food or check if the feeder is exposed to direct sunlight.
5	Flashing white indicator light on the left side.	Device in pairing mode	Wait for successful pairing.

No.	Abnormal Situation	Possible Causes	Solutions
6	Breathing white indicator light on the left side.	Device upgrading	Wait for successful upgrade.
7	No indicator light on the left/right side.	Device in battery mode	Press the Wi-Fi/Dispense key, and the indicator light will turn on for 10 seconds and then turn off. If the indicator light does not turn on, please contact customer support.
8	Network connection failure	Operational issue /device malfunction	Please contact customer support.

## 7 Product Specifications

Product Name: Smart Pet Feeder [Cubie M3]

Product Model: NDSFE004

Main Materials: ABS, PP, SUS304

Product Size: 294\*234\*342mm

N.W.:  $\approx$ 2.1kg

Connect Method: Wi-Fi (2.4GHz)

Input: 5V  $\approx$  1A

CMIIT ID: 2020DP2713(module)

---

This device includes a wireless transmission module with model approval code

CMIIT ID: 2020DP2713 (module).

## 9 Warranty Terms

Dear customers, thank you for purchasing this product, please read the below warranty terms carefully before using:

### **12-month Warranty & Lifetime Customer Support**

Only apply to eligible purchases made directly from the Pet Marvel authorized distributors. Warranty coverage applies to the original owner and the original product only. And is not transferable.

The following conditions are not covered by the warranty:

- Any malfunction or defect caused by improper use of environment or conditions;
- Any fault or defect caused by improper installation, misuse, unauthorized maintenance, force majeure events, or other external reasons;
- Any fault or defect caused by the use of non-original fittings or accessories;
- The product has exceeded the warranty period;
- Other failures or damages caused by none of the product design, technology, manufacturing process, or quality problems;
- Normal fading, wear and tear, or consumption during the use of the product;
- Not able to provide a valid purchase certificate.

**For warranty service and more information, please get in touch via  
Email: [customerservice@petmarvel.com](mailto:customerservice@petmarvel.com)**



Note: Pictures on this brochure are for reference only, and the product is subject to the real object.

---



