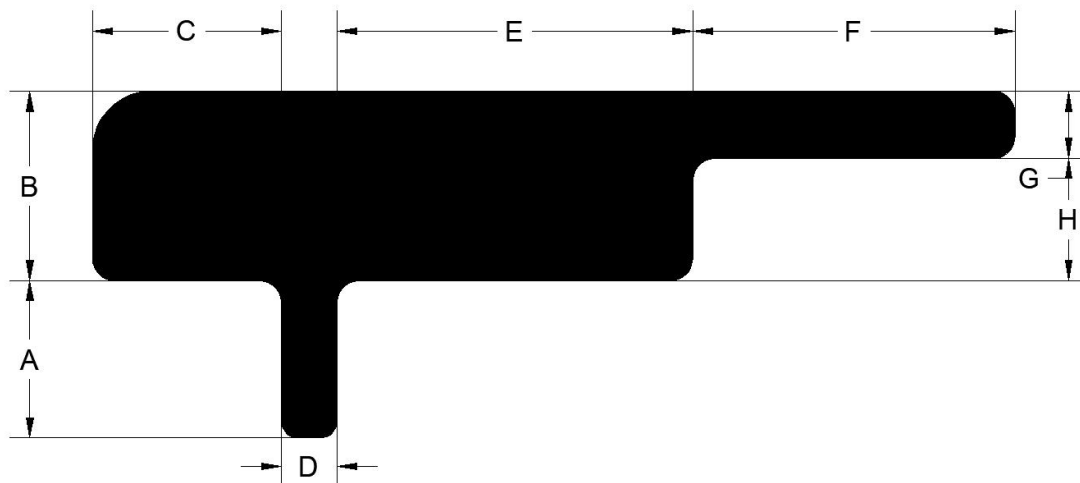


5.8GHz MIFA Antenna specification

1. Type of antenna: On-board antenna MIFA
2. Frequency: 5.8GHz
3. Design by: Shenzhen kingminson Electronic Co., Ltd.
4. Address : Floor 4, Bldg. A, Aode Ind. Zone, Tangwei, Guangming New Dist., Shenzhen, Guangdong, China
5. Dimensions:

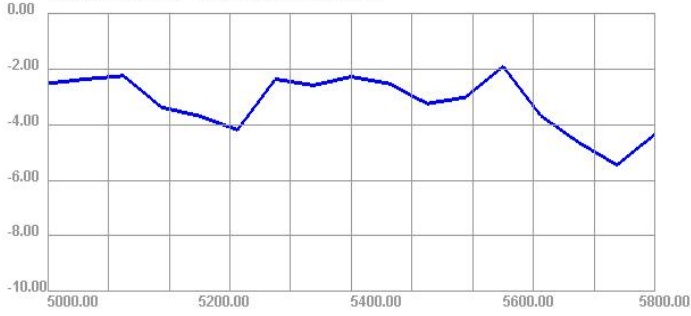


A	1.41mm
B	1.70mm
C	1.70mm
D	0.50mm
E	3.20mm
F	2.90mm
G	0.60mm
	1.10mm

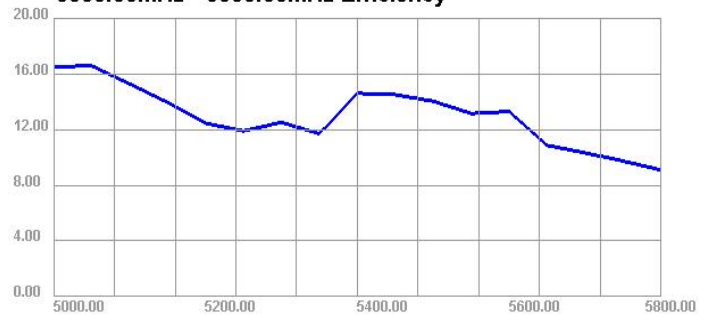
Application Information	
04Version	4.87.297
TotalTime	3m 19s 952ms
AdditionalInfor	NULL

Passive Test For 5.8										
Freq (MHz)	Effi (%)	Effi (dB)	Gain (dBi)	Gain (dBd)	UHS (%)	DHIS (%)	Max (dB)	Min (dB)	Attenut Hor	Attenut Ver
5000	16.52	-7.82	-2.52	-4.67	5.404	11.112	-2.52	-24.87	61.78	60.89
5050	16.59	-7.8	-2.37	-4.52	5.164	11.421	-2.37	-23.11	62.26	61.36
5100	15.28	-8.16	-2.25	-4.4	4.761	10.522	-2.25	-24.09	61.83	61
5150	13.96	-8.55	-3.38	-5.53	4.461	9.497	-3.38	-19.05	62.28	61.26
5200	12.45	-9.05	-3.69	-5.84	4.363	8.088	-3.69	-23.9	62.8	61.9
5250	11.9	-9.24	-4.19	-6.34	4.095	7.809	-4.19	-21.24	62.96	62.39
5300	12.52	-9.02	-2.37	-4.52	4.372	8.15	-2.37	-18.68	62.8	62.04
5350	11.71	-9.31	-2.59	-4.74	4.097	7.611	-2.59	-17.24	63.35	62.04
5400	14.61	-8.35	-2.28	-4.43	5.272	9.337	-2.28	-17.68	63.21	62.18
5450	14.51	-8.38	-2.53	-4.68	4.912	9.594	-2.53	-18.64	64.06	63.28
5500	14.04	-8.53	-3.25	-5.4	5.011	9.029	-3.25	-17.15	64.32	63.01
5550	13.16	-8.81	-3.02	-5.17	4.225	8.933	-3.02	-20.29	65.06	63.95
5600	13.3	-8.76	-1.91	-4.06	4.232	9.066	-1.91	-20.16	65.91	65.06
5650	10.87	-9.64	-3.69	-5.84	3.341	7.529	-3.69	-24.48	65.59	65.05
5700	10.33	-9.86	-4.65	-6.8	3.426	6.907	-4.65	-19.43	65.3	64.92
5750	9.74	-10.11	-5.45	-7.6	3.568	6.172	-5.45	-26.58	65.19	64.75
5800	9.1	-10.41	-4.35	-6.5	2.849	6.252	-4.35	-18.67	65.79	65.14

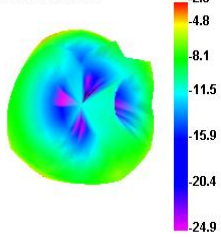
5000.00MHz - 5800.00MHz Gain



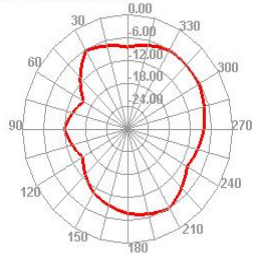
5000.00MHz - 5800.00MHz Efficiency



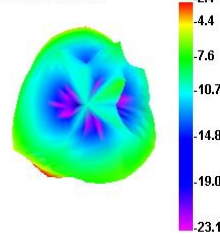
5000.000MHz



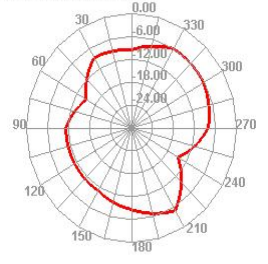
5000.000MHz H



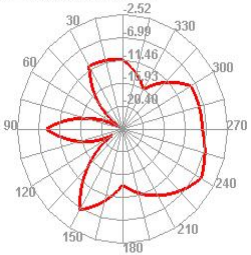
5050.000MHz



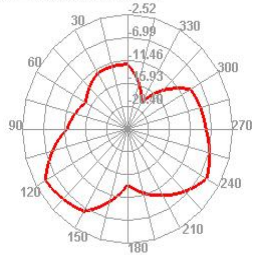
5050.000MHz H



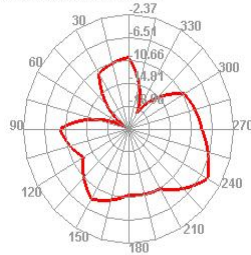
5000.000MHz E1



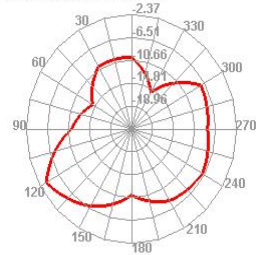
5000.000MHz E2



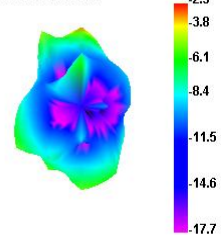
5050.000MHz E1



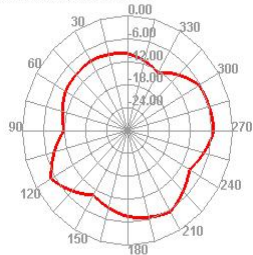
5050.000MHz E2



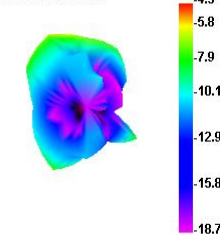
5400.000MHz



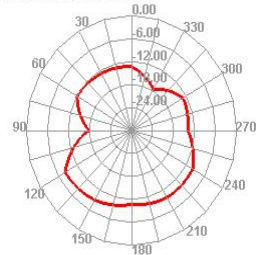
5400.000MHz H



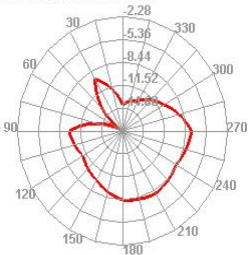
5800.000MHz



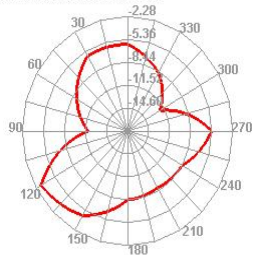
5800.000MHz H



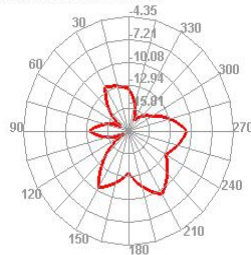
5400.000MHz E1



5400.000MHz E2



5800.000MHz E1



5800.000MHz E2

